

ENVIRONMENTAL MANAGEMENT

The growing changes affecting the natural environment, and the increasing role of environmental policies affecting businesses and organisations are creating new and challenging career opportunities for those familiar with issues of sustainable development, planning and environmental protection and management.

The BSc in Environmental Management explores the physical, social, economic and cultural aspects of environmental management. It combines aspects of science, geography and environmental planning with an environmental work placement to understand the environmental systems in which we live and work.

COURSE CONTENT

The BSc in Environmental Management explores the physical, social, economic and cultural aspects of environmental management.

Students will be enabled to understand:

- Issues of sustainable development, conservation and environmental protection and management
- The integrated and holistic nature of environmental management.
- Devising, managing and critically evaluating project work

The modules are:

Stage 1

- Dynamic Earth
- Environmental Change: Past, Present and Future
- Environmental Management
- Planning, Health and Well Being
- Processes and Principles of Physical Geography
- Ecology and Environmental Science

Optional modules

- Environmental Change: Past, Present and Future
- Contemporary Issues in Urban and Rural Planning

Stage 2

- Environmental Assessment
- Geographical Research and Personal Development
- Introduction to Environmental Economics
- Landscapes and Geographical Information Systems
- Work Placement

One of the following:

- Planning Theory and Society
- Planning and Climate Change
- Applied Ecology
- Oceans Past, Present and Future

Work Placement

Environmental Management students will complete a compulsory 16 week degree-related work placement. Students will begin preparations for the placement in the first semester of Stage 2 and the placement will take place usually at the end of the second semester.

Stage 3

- Business Innovation and Entrepreneurship
- Policies for Environmental Sustainability
- Environmental Management Dissertation

One of the following:

- Sea-Level change; past, present and future
- Global Issues in Agriculture
- Infrastructure and Transportation Planning
- Conservation Biology

BSc Honours

Environmental Management 3 yrs (F850)

Environmental Management with Professional Studies 4-yr SW (F854)

Entrance Requirements

A-level:

BBB including at least two from Biology, Economics and Geography + GCSE Mathematics grade C/4

OR

ABB + GCSE Mathematics grade C/4.

BTEC Extended Diploma:

A relevant BTEC Extended Diploma with 100 credits at Distinction and 80 credits at Merit + GCSE Mathematics grade C/4

OR

Any BTEC Extended Diploma with 120 credits at Distinction and 60 credits at Merit + GCSE Mathematics grade C/4.

All applicants:

Certain modules will require GCSE Mathematics grade B/6.

For students whose first language is not English

An IELTS score of 6.5 with a minimum of 5.5 in each test component or an equivalent acceptable qualification, details of which are available at: go.qub.ac.uk/EnglishLanguageReqs

WHY QUEEN'S?

Professional Accreditations

Degrees accredited by the Royal Institution of Chartered Surveyors (RICS).

Work Placement

Students must complete a compulsory 16-week work placement as an integral part of Stage 2. This placement will help students apply their degree to a work place environment, and build a foundation for future career opportunities.

Multidisciplinary

This is a unique interdisciplinary course shared between two Schools – Biological Sciences and Natural and Built Environment.

Interactive Teaching

The course will include 'Dragons' Den' presentations to external experts in the final year for the module Business Innovation and Entrepreneurship. Planning and Geography modules will host guest lectures from business practitioners. Site visits will be an important component of many modules, including Environmental Management, Environmental Assessment, Policies for Environmental Sustainability, Dynamic Earth and Environmental Change.

CAREERS/FURTHER STUDY

Careers are diverse, not only in the rural and land use industries and government services, but also in private sector industries, financial institutions and agribusiness concerns of various kinds.

Graduates will have a knowledge of the natural environment, be able to demonstrate familiarity with sustainable development, conservation and environmental protection issues, as well as an understanding of the integrated and holistic nature of land use and environmental management.

Possible careers include environmental management (private and public sectors) and include consultancy and environmental impact assessment with environmental organisations (eg RSPB, WWF). Graduates can become Chartered Surveyors. Opportunities also exist within the full range of occupations associated with graduate employment.

Employment after the Course

Students who graduate from the Environmental Management programmes have primarily embraced careers in the following areas: environmental management; environmental consultancy; environmental conservation; environmental surveying.

Graduates from this course have found employment in several organisations, including:

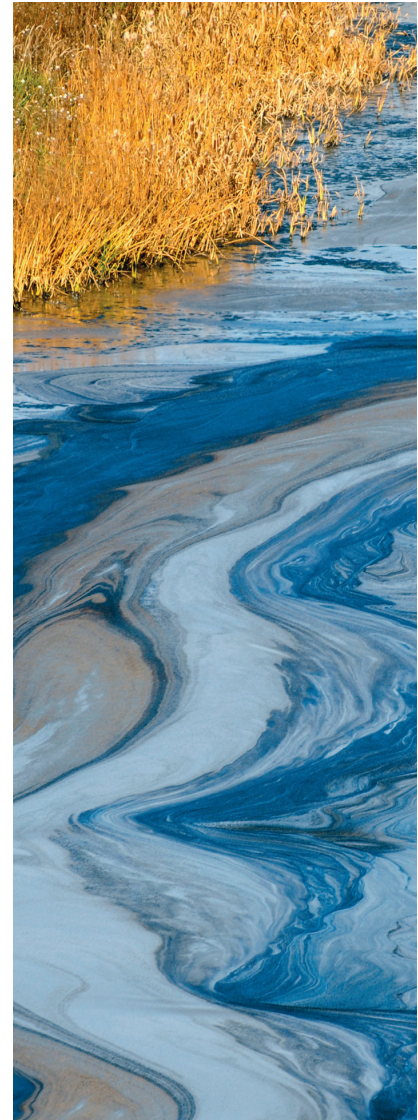
- Action Renewables
- The Consumer Council
- DAERA
- Ecologia
- Environment Agency
- Nestlé
- RecyCo Waste Management
- RSPB
- RPS Consulting
- ESB International
- McQuillan Environmental
- Farrans
- ATG Group
- Clarity Consultancy NI
- DevineAir Limited
- Connswater Community Greenway
- John McCaffrey Associates
- Ofgem
- Caterpillar
- Bryson Recycling

FURTHER STUDY

Graduates from this course have continued further education studying MSc programmes in Ecological Management and Conservation Biology; Leadership for Sustainable (Rural) Development, and PhD programmes in Ecosystem Biology and Sustainability

“I am a Graduate Surveyor in the Valuation and Professional Services Department in Lambert Smith Hampton's Dublin office. After graduating from Queen's, I have been working on the valuation of various retail, office, industrial, development land and mixed use investment properties across Ireland.”

Philip Lennon, Environmental Management Graduate



Entrance requirement

e: admissions@qub.ac.uk
t: +44 (0)28 9097 3838

Course information

Professor Alberto Longo
Programme Director
School of Biological Sciences

e: biosciences-ug@qub.ac.uk
t: +44 (0)28 9097 5786
w: qub.ac.uk/bb