



# QUEEN'S UNIVERSITY BELFAST

## OPEN DAYS 2019 MAP AND GUIDE

SATURDAY 7 SEPTEMBER 2019  
9:30AM – 3:30PM

### QUEEN'S FROM YOUR PERSPECTIVE

## Graduate Today and Win

£100 Amazon vouchers to be won!

Find us at the Whitla Hall.

Step inside the Open Day time machine and fast-forward to your Graduation in 2023.

**Step 1.** Grab your gown and mortarboard.

**Step 2.** Take your Graduation photo with our selfie mirrors and print out your free copy or email it to yourself.

**Step 3.** Share your shot on tagging @QUBelfast and #LoveQUBComp.

Terms & conditions apply.  
One print per photo session.



## PLAN YOUR OPEN DAY 2019

- Visit the Support Services exhibition (in the Whitla Hall
- Visit the Subject exhibition (in the Marquee)
- Attend a Mini Talk
- Take a Tour
- Attend a Subject Talk

## SUPPORT SERVICES | Whitla Hall



**18 Accommodation**  
Find out what it's like to live here at Queen's and talk to the team.



**18 Careers, Skills and Global Opportunities**  
Ask about the many activities that can develop your Career and explore your options abroad.



**18 Disability and Wellbeing**  
Talk to our Disability and Wellbeing team, who provide information and support to students.



**18 Fees and Funding**  
Ask the team about our flexible fees and funding options that are available to you.



**18 Students' Union**  
Come say hi and find out what the Union does to support students including advice on funding and money management.



**18 Queen's Sport**  
Talk to Queen's sport and find out about our incredible sporting facilities on campus.



**18 Language Centre**  
Learn more about exploring your opportunities by learning a foreign language.



**18 University Health Centre**  
Talk to the team about university funded, non-NHS services for students of Queen's University.

## MINI TALKS | Whitla Hall

MINI TALKS	TIME
Accommodation	9.45am and 12.15pm
Careers, Employability and Skills	10am and 12.30pm
Disability and Wellbeing	10.15am and 12.45pm
Admissions and Access Service	10.30am and 1pm
Lloyds Scholarship	10.45am
Students' Union	11am and 1.30pm
Visit Belfast	11.15am and 2.15pm
St Mary's College	11.45am and 1.45pm
Sport	12pm and 2pm
Language Centre	1.15pm

## GB WELCOME CENTRE The Great Hall

### STUDENTS FROM ENGLAND, SCOTLAND, WALES, CHANNEL ISLANDS AND ISLE OF MAN

We have a dedicated GB Welcome Centre available throughout the day for students from England, Scotland, Wales and the Islands. Come along to find out more about studying at a Russell Group university and living in the vibrant city of Belfast. Throughout the day we will have staff and students available to chat with you. We will also have a secure place to store any luggage.

**Make sure you join us for our GB Family Talks running at 10.30am, 12noon and 1.30pm in The Great Hall**

Here is what we will cover:

- Discover what it's like to study at a world-class university.
- Learn more about our generous scholarships which are available to students from Great Britain.
- Find out more about accommodation options available.
- Hear from our panel of GB students on their experience of Queen's and life in Belfast.



Everything you need to know about life in vibrant Belfast. Find us in the Whitla Hall.

## TOURS



**STUDENT ACCOMMODATION TOURS ELMS BT9, MALONE ROAD**

**Tour times:** A bus leaves every 30 mins (10.15am - 2pm on Saturday)

**Hop on the Elms BT9 Bus at University Square to visit our impressive accommodation facilities.**



**STUDENT ACCOMMODATION TOURS, ELMS BT2, CITY CENTRE.**

**Tour times:** A bus leaves every 30 mins (10.15am - 2pm on Saturday)

**Hop on the Elms BT2 Bus at University Square to visit our fab, brand new city centre accommodation.**



**QUEEN'S SPORT TOURS**   
**Tour times:** Tours of the Physical Education Centre (PEC) will be available every half hour from 11.00am - 2.00pm. Meet at the PEC foyer.

**Discover why we're a premier sporting university. Take the five minute walk through Botanic Gardens to see our advanced Physical Education Centre for yourself.**



**THE LANGUAGE CENTRE AT QUEEN'S TOURS**   
**Tour times:** 11.30am, 12.30pm and 2.00pm (Saturday) Language Centre Resource Room, Ground Floor, The McClay Library.

**Come along and discover how you can make the most of your time at Queen's by adding languages to your experience.**



**THE McCLAY LIBRARY TOURS**   
**Call in during your Open Day visit for a tour. A member of library staff will lead a tour every half hour starting at 10am and finishing at 1pm**

**Find out what makes the McClay Library a world-class facility.**

## SUBJECT EXHIBITION AND ADMISSIONS AND ACCESS SERVICE

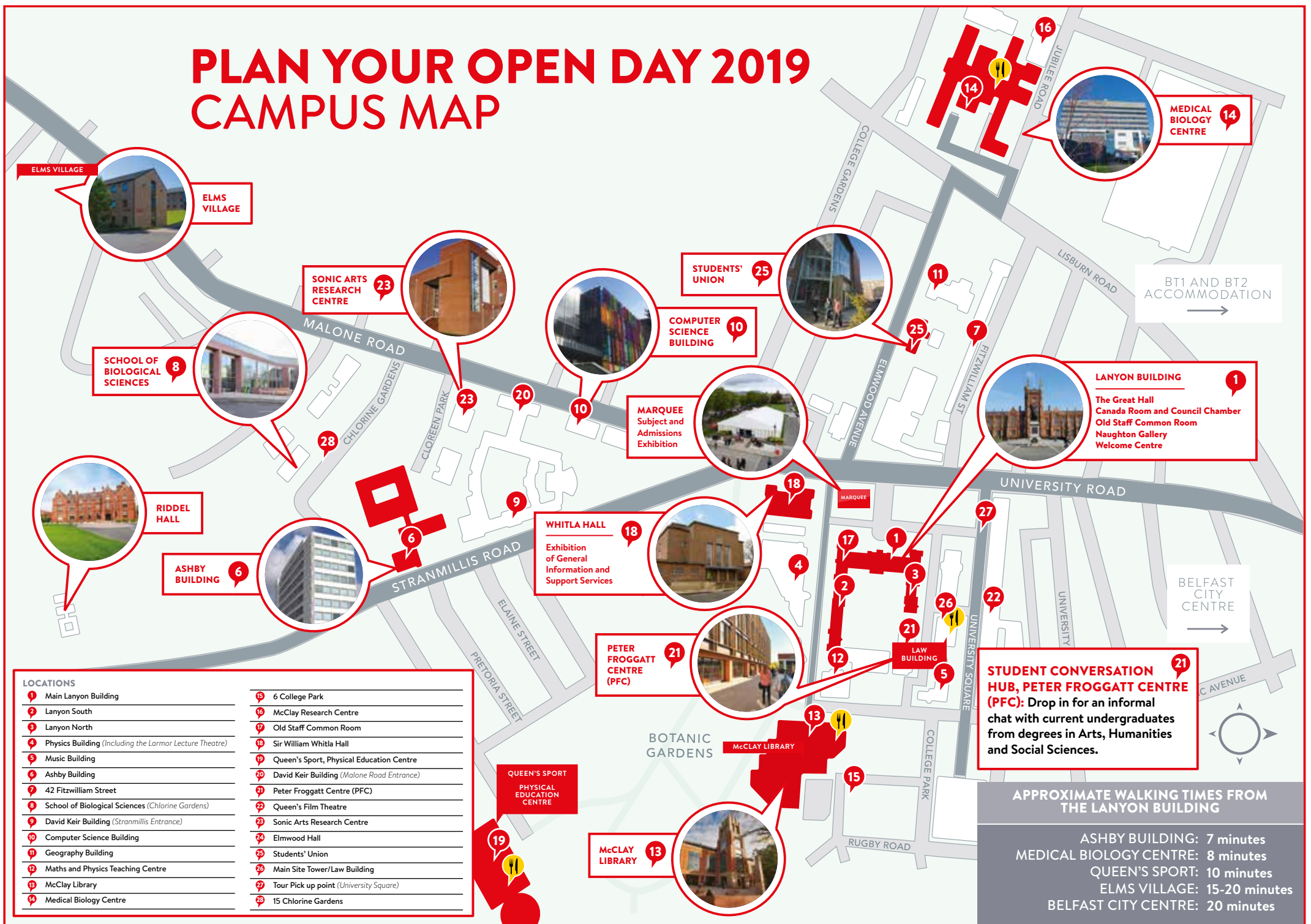


### THE MARQUEE

Talk to our staff, students and Admissions and Access Service for detailed course information.



# PLAN YOUR OPEN DAY 2019 CAMPUS MAP



## SUBJECT TALKS | Saturday 7 September

- 21 Accounting**  
PFC, 0G.024  
11.30am, 1pm
- 21 Actuarial Science and Risk Management**  
PFC, 02.026  
11am, 12.30pm
- 6 Aerospace Engineering, Engineering, Mechanical Engineering, Product Design Engineering**  
Ashby Building, ASH, GM.001  
12noon
- 8 Agricultural Technology and Environmental Management**  
School of Biological Sciences, Chlorine Gardens  
12.30pm
- 21 Anthropology and Ethnomusicology**  
PFC, 03.011  
11am, 12noon
- 7 Archaeology and Palaeoecology**  
42 Fitzwilliam Street, G43  
11.30am
- 28 Architecture**  
15 Chlorine Gardens  
11am
- 23 Audio Engineering, Music and Audio Production, Music and Sound Design**  
Sonic Arts, SARC  
12noon
- 8 Biological Sciences (Includes Biochemistry, Biological Sciences, Marine Biology, Microbiology and Zoology)**  
School of Biological Sciences, Chlorine Gardens  
11am
- 14 Biomedical Science and Human Biology**  
Medical Biology Centre, 0G.008 AST  
11am  
Physiology and Anatomy Teaching Laboratory tours, Medical Biology Centre, Foyer  
12.10pm
- 22 Broadcast Production (Followed by tours of the facilities)**  
QFT, Screen 2  
10.45am
- 21 Business Management**  
PFC, 0G.024  
11am, 12.30pm
- 9 Chemistry and Chemical Engineering**  
David Keir Building, 0G.115  
10.30am, 12.30pm
- 9 Civil Engineering**  
David Keir Building, 0G.012  
11am
- 10 Computing**  
Computer Science Building, Interactive Lecture Theatre, 02.027  
10.15am, 12noon
- 4 Criminology**  
Bell Lecture Theatre  
10.30am, 11.30am
- 14 Dentistry**  
Medical Biology Centre, Room 0G.008 AST  
12noon
- 22 Drama Studies**  
QFT, Brian Friel Theatre  
10.30am, 11.30am
- 21 Economics and Business Economics**  
PFC, 0G.024  
10.30am, 12noon
- 10 Electrical and Electronic Engineering**  
Computer Science Building, 02.027  
11.15am, 1pm
- 2 English**  
Emeleus Lecture Theatre  
11am, 12noon
- 22 Film Studies and Production (Followed by tours of the facilities)**  
QFT, Screen 1  
10am, 11.30am
- 21 Finance**  
PFC, 02.026  
10.30am, 12noon
- 8 Food Quality, Safety and Nutrition and Food Science and Food Security**  
School of Biological Sciences, Chlorine Gardens  
10.30am
- 21 French, Irish, Spanish and Portuguese**  
PFC, 02.017  
10.30am, 11.15am
- 11 Geography**  
Geography Building, 0G.029  
11am
- 21 History: Modern and Ancient History**  
PFC, 02.018  
10.30am, 11.30am
- 21 International Business with a Language**  
PFC, 02.026  
11.30am, 1pm
- 21 International Politics and Conflict Studies**  
PFC, 02.011  
11.30am
- 21 Irish, French, Spanish and Portuguese**  
PFC, 02.017  
10.30am, 11.15am
- 21 Liberal Arts**  
PFC, 02.014  
11.30am
- 12 Mathematics**  
Maths and Physics Teaching Centre, 0G.017  
10.30am
- 12 Mathematics and Physics**  
Maths and Physics Teaching Centre, 0G.017  
11.30am
- 6 Mechanical Engineering, Aerospace Engineering, Product Design Engineering**  
Ashby Building, ASH, GM.001  
12noon
- 14 Medicine**  
Medical Biology Centre, Lecture 0G.046 NT  
11.30am
- 23 Music and Audio Production, Music and Sound Design, Audio Engineering**  
Sonic Arts, SARC  
12noon
- 5 Music and Music Performance (Followed by tours of the facilities)**  
Music Building, Harty Room  
11am
- 14 Nursing and Midwifery**  
Medical Biology Centre, 0G.046 NT  
11am, 1pm
- 16 Pharmacy, Pharmaceutical Sciences and Pharmaceutical Biotechnology**  
School of Pharmacy, PMI, 0G.028  
10.30am
- 21 Philosophy**  
PFC 02.013  
10.30am, 12noon
- 12 Physics**  
Maths and Physics Teaching Centre, 0G.017  
10am
- 12 Physics and Astrophysics**  
Maths and Physics Teaching Centre, 0G.017  
11am
- 9 Planning**  
David Keir Building, 03.010  
10.00am, 12noon
- 21 Politics**  
PFC, 02.025  
10.30am, 12noon
- 21 Politics, Philosophy and Economics (PPE)**  
PFC, 02.025  
11am, 12.30pm
- 6 Product Design Engineering, Mechanical Engineering and Aerospace Engineering**  
Ashby Building, ASH, GM.001  
12noon
- 20 Psychology**  
David Keir Building, 0G.533  
10.30am, 12noon, 1.30pm
- 21 Social Work**  
PFC, 0G.007  
12.30pm
- 3 Sociology, Social Policy**  
Lanyon North, 0G.074  
11am, 12noon
- 21 Spanish and Portuguese, Irish, French**  
PFC, 02.017  
10.30am, 11.15am
- 2 St Mary's University College**  
Lanyon South, Senate Room  
12.15pm
- 4 NI and EU Family Talk:**  
Welcome to Queen's  
Find out everything you need to know about life at Queen's University, The Larmor Lecture Theatre  
10.30am, 12noon and 1.30pm

Follow us and share the good times with

#LoveQUB

@qubelfast

