



QUEEN'S
UNIVERSITY
BELFAST

BELMONT UNIVERSITY PRE-DEPARTURE SESSION



TODAY'S WEBINAR

1. WELCOME
2. STUDENT JOURNEY
3. VISAS
4. AIRPORT PICKUP/ARRIVAL
5. ACCOMMODATION
6. FIRST WEEK IN BELFAST
7. REGISTRATION & ENROLMENT
8. HEALTH & WELLBEING
9. KEY CONTACTS
10. NEXT STEPS
11. Q&A – ASK ANY QUESTION!



QUEEN'S
UNIVERSITY
BELFAST

STUDENT JOURNEY



STUDENT JOURNEY

- ✓ Apply to QUB and submit your documents via email
- ✓ Receive your letter of offer from QUB
- ✓ Accept your letter of offer from QUB
- ✓ Receive your student number and apply for QUB accommodation
- ✓ Receive your visa letter from QUB
- ✓ Travel to Belfast – enter through UK port of entry (airport)





QUEEN'S
UNIVERSITY
BELFAST

VISAS & IMMIGRATION





Immigration advice session for Study Abroad & Exchange



Helen McBrinn

Senior Immigration Adviser

International Student Support

29 November 2021

International Student Support

Immigration Advice Team (who we are and what we do)

Our dedicated team of five immigration advisers provide professional advice in relation to UK study visa and immigration matters including applying for your visa to come to the UK and assisting you with any queries you may have.

We can provide advice and assistance in relation to a range of UK study visas including:

➤ Student visa route

➤ **Visitor visa for study**

If you have any immigration difficulties during your time at the University please let us know and we will do our best to assist or direct you to someone who can provide you with advice.

Summary of different types of immigration permission

- **Standard Visitor Visa for Study**

Is immigration permission that you may apply for if you are studying for less than 6 months

- **Student Visa Route**

Is immigration permission that you may apply for if you are studying for more than 6 months or if you wish **work** during your UK studies

VISITOR VISA FOR STUDY



QUEEN'S
UNIVERSITY
BELFAST

Visitor Visa for Study

This type of immigration permission permits students to come to the UK and study for **less than 6 months**

You may apply for a Standard visitor visa to study:

- For one semester as part of
 - an Exchange
 - Study Abroad
 - Erasmus programme

Visitor Visa for Study

Where do you apply for this visa or immigration permission?

Non-visa national – can apply in advance or at the UK border (i.e. airport)

Examples are nationals of the following countries: Brazil, Canada, EU/EEA, **USA**.

You should not apply at the UK border (airport) if you have a criminal record, you've previously been refused entry into the UK or have recently held visitor permission.

If you are on sure you can check here: <https://www.gov.uk/check-uk-visa>



Visitor Visa for Study

Applying for immigration permission at the UK border (airport)

What you need at the UK border (non-visa nationals only)

You must provide a valid passport and it should be valid for the whole of your stay in the UK.

Immigration permission granted at UK border and passport is stamped to confirm

You *may* also be asked to prove that:

- the **letter of acceptance** provided by Queen's University Belfast
- you're able to **support yourself** during your trip, e.g. you or your parents bank statement
- you've arranged **accommodation** for your stay
- you'll **leave the UK** at the end of your visit

There is no charge when you apply at the airport



Visitor Visa for Study

Applying for immigration permission at the UK border (airport)

ePassport Gates (non-visa nationals only)



- E-gates permission is granted but no stamp in passport – keep your boarding pass

Visitor Visa for Study

Applying for a **Visitor Visa for Study** in advance of traveling to the UK:

- You can do this online here: <https://www.gov.uk/standard-visitor-visa/apply>
- An application takes approximately 3-4 weeks
- Cost £95
- You must attend a biometrics appointment

- Must provide supporting documents with your application
 - a **passport** that is valid for the duration of your visit
 - the **letter of acceptance** provided by Queen's University Belfast
 - you're able to **support yourself** during your trip (i.e. you or your parents bank statement)
 - any **qualification** stated in your acceptable letter

Visitor Visa for Study

Applying for a **Visitor Visa for Study** in advance of traveling to the UK

Useful information

- Visa must be granted before travel
- You will receive a vignette (sticker) in your passport
- The vignette is your visa
- Your visa will be granted for 6 months
- You must travel to the UK within your visa validity dates

You may want to [apply for a Standard Visitor visa](#) in advance of travelling if you have a criminal record or you've previously been refused a visa or entry into the UK or the Republic of Ireland.

Visitor Visa for Study

You can **not**:

- do paid or unpaid work for a UK company or as a self-employed person
- claim public funds (benefits)
- do a course of study that lasts longer than 6 months
- cannot switch to another visa category from within the UK or extend this visa
- bring dependants (family with you) with you

You will **require**:

- medical insurance to cover your stay in the UK as you do not pay immigration health surcharge

QUESTIONS?

Or email immigration@qub.ac.uk

ISS Visa and Immigration web pages:

<https://www.qub.ac.uk/sites/iss/VisasImmigration/>



**QUEEN'S
UNIVERSITY
BELFAST**

Useful Resources

- Queen's University Belfast Visa & Immigration Advice webpages
<https://www.qub.ac.uk/sites/iss/VisasImmigration/>
- UK Government webpages
<https://www.gov.uk/standard-visitor-visa>
- UK Council of International Students Affairs (UKCISA)
<https://ukcisa.org.uk/>



QUEEN'S
UNIVERSITY
BELFAST

AIRPORT PICKUP



HOW TO GET TO QUEEN'S

- Airport pickup from Belfast City Airport operating on Friday 7th January
- Private coach transfer
- Meeting point – BHD arrivals hall
- Staff leads – Rachel, Emma and Gemma
- Transfer to your accommodation – Elms BT9
- Journey time is approximately 20 minutes
- Please ensure you have a mask to wear during transit



Full pickup details will be shared via the Belmont landing page.



QUEEN'S
UNIVERSITY
BELFAST

FIRST WEEK IN BELFAST



WEEK 1 SCHEDULE

DATE / TIME	ACTIVITY	LOCATION
Fri 7 Jan / 14:30 Fri 7 Jan / 16:00	Arrive into Belfast City Airport - transfer to BT9 accommodation Accommodation briefing / pick up kitchen/bedding packs	Belfast City Airport to Elms BT9
Sat 8 Jan Sun 9 Jan	Free Weekend - get settled and explore Belfast	
Mon 10 Jan / 10:00 Mon 10 Jan / 11:30 Mon 10 Jan / 12:30	Drop-In Session Campus Tour Welcome lunch event & student panel	The Great Hall Lanyon Building
Tues 11 Jan / 10:00	Belmont student meeting	
Wed 12 Jan	Module Selection Appointments These sessions will be allocated by surname in hourly slots.	Peter Froggatt Centre
Thurs 13 Jan	Free time	
Fri 14 Jan / 10:00	Belfast Tour	Meet outside Elms BT9 reception

JANUARY IN BELFAST

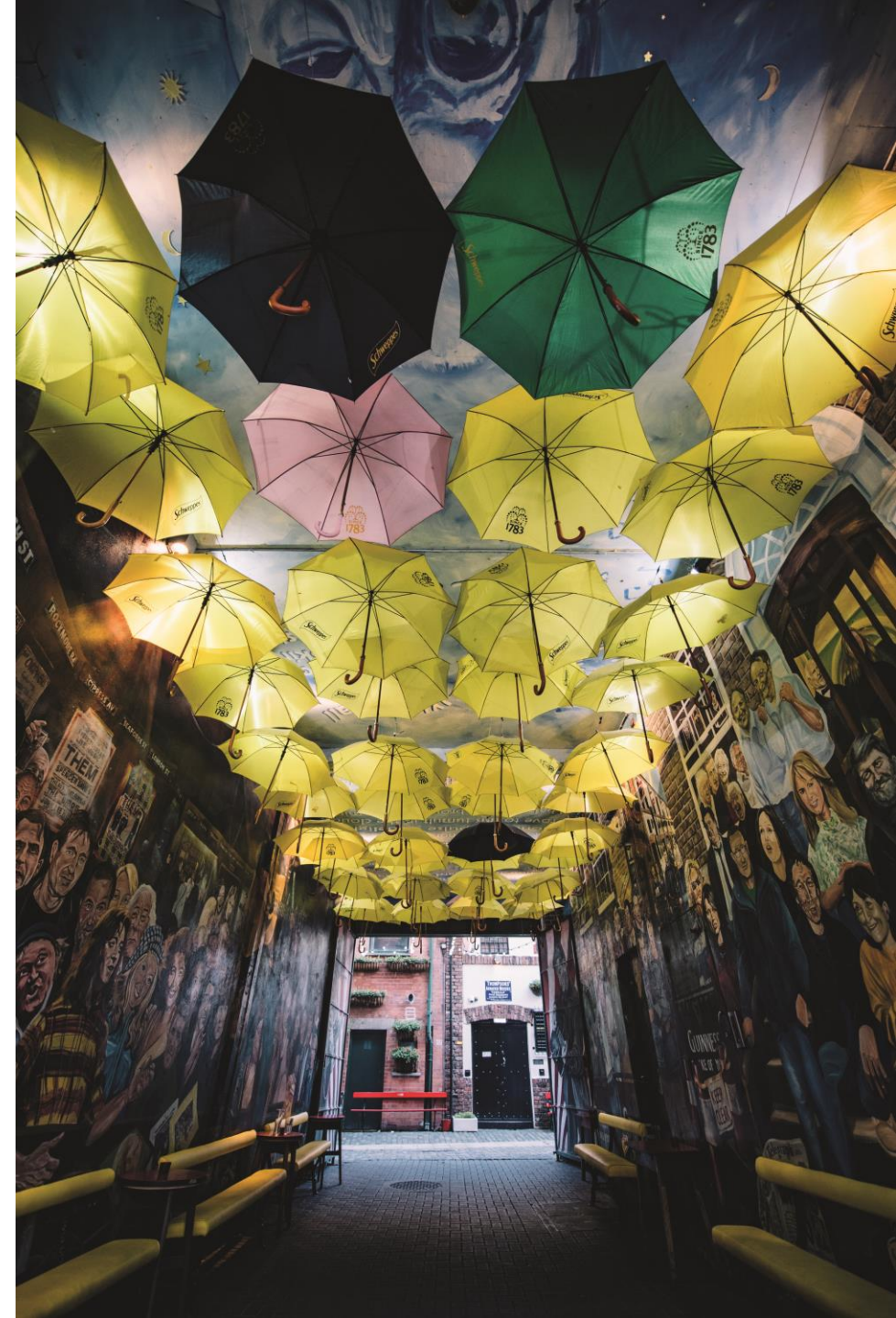
- The coldest month of the year in NI
- Av. temperature is 6 degrees Celsius (42 Fahrenheit)
- Daylight hours – 08:30am to 4:30pm
- Pack rain jacket and warm clothing

WHAT'S ON IN JANUARY?

Out to Lunch Festival – 8th to 30th January

Gigs – check out SongKick

Sports Fixtures – Irish Football Association, Ulster Rugby, GAA, Belfast Giants Ice-Hockey & more





QUEEN'S
UNIVERSITY
BELFAST

ACCOMMODATION



YOUR HOME AT QUB

As a Belmont University student at QUB you will be staying in Elms BT9.

- 10 minutes walk from the University campus and 30 minutes walk from Belfast city centre.
- Rooms are all single occupancy with shared bathroom facilities, located in low rise accommodation blocks of three floors with a common room, kitchen and television available on each floor.
- Your room will have a single bed, study desk, desk chair, wardrobe & shelf space, and a wash basin.

Included in your accommodation is a combined Kitchen/Bedding pack.

Laundry - Circuit Laundry App/Card at The Treehouse.



Maintenance – If you need a helping hand!

Whilst we hope that your time here at Queen's Accommodation runs smoothly, we know that sometimes things can go wrong!

If you find that something is broken, and needs to be repaired, our team are onsite 9am - 5pm, Monday – Friday, and are on call 24/7 for emergencies.

Emergencies are as follows:

- No heating
- No hot water
- Kitchen sockets not working
- Bedroom – all lights not working
- Front door or bedroom doors not opening, closing or locking
- Major leak



For general repairs/enquiries, you can raise a maintenance request on our website (<https://www.qub.ac.uk/accommodation/Online-Maintenance-Request/>) or by emailing maintenance@qub.ac.uk. For emergencies, please contact Reception.

Residential Life Team

The Residential Life Team are here to support you during your stay!

- Wellbeing Support – The **Residential Life Coordinators (RLC's)** are available to speak to you should you have any issues, for example if you are feeling lonely, homesick, or are struggling to adjust to university life.
- Social Support - The team organise a regular programme of social activities & trips, designed to help you make new friends, get to know Northern Ireland, and maximise your experience here at BT9.
- We also have a team of **Residential Assistants (RA's)**. They are students like you, who live in our halls of residence:
 - The RA's run a nightly drop-in service at the Treehouse, where you chat to them over a tea or coffee.

If you would like to talk to the Residential Life Team, please contact the Treehouse Reception!



The Treehouse

The Treehouse is our social space here at BT9...

- New refurbished, with new furniture, lighting, decoration & study booths – making it a nicer environment to work & relax in.
- Study room – we have a study room with private booths, computer workstations and printers, providing an alternative to working in your room.
- Coffee bar & Pool Tables - Our onsite coffee bar, open each evening and serving free tea & coffee, provides the perfect setting to meet new people & make new friends.
- Laundry – Our laundry room is located on the ground floor of the Treehouse.
- **Our Residential Life Team's office can be located on the ground floor of the Treehouse.**



Reception – here to help

Our Reception is open 24 hours a day, 365 days a year, and our staff are here to help!

The team are your first port-of-call for all general enquiries and can link you in with any of other teams onsite. All post and packages are delivered to Reception for you to collect.

Contact our **Reception Team** day or night:

- Phone - 028 9097 4525
- Email – accommodation@qub.ac.uk





QUEEN'S
UNIVERSITY
BELFAST

REGISTRATION & ENROLMENT



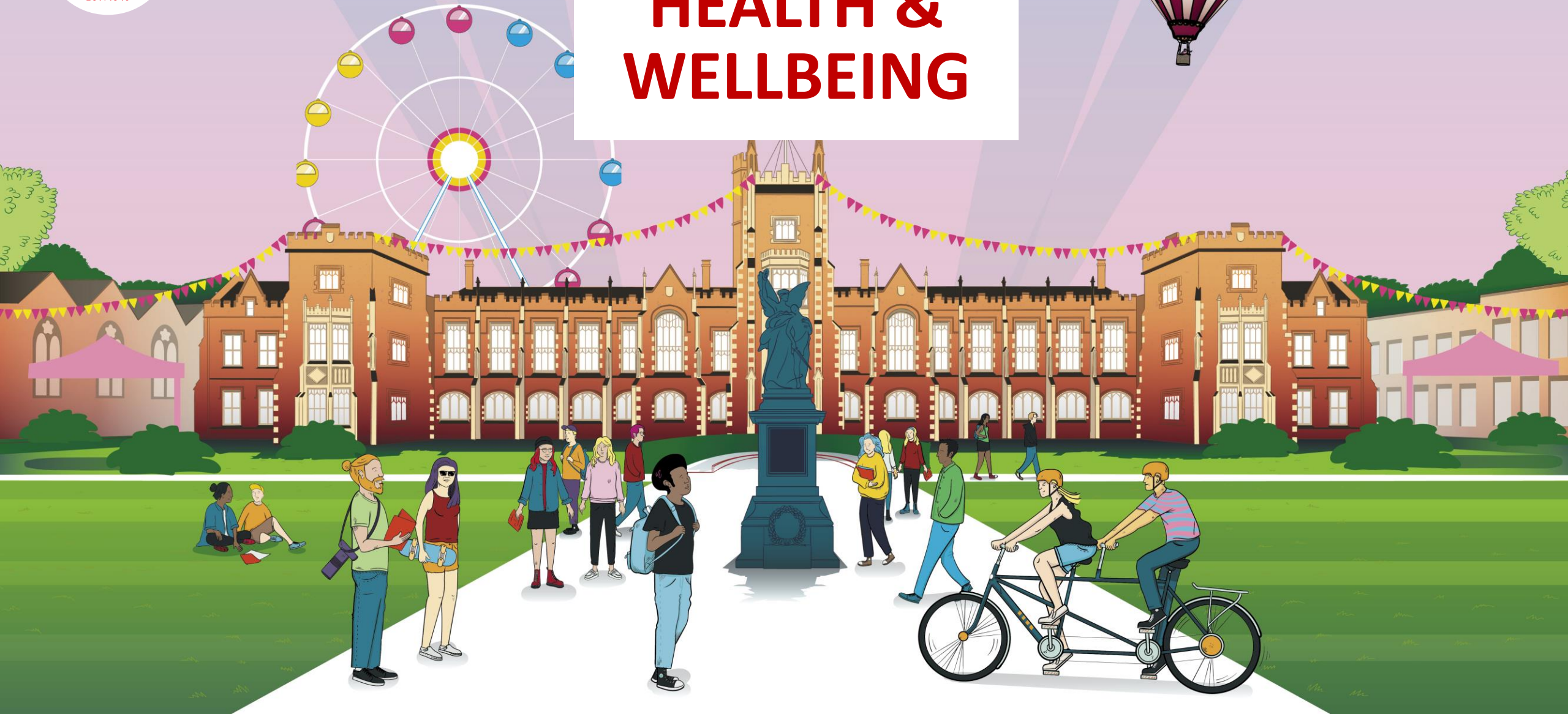
BECOMING **AN OFFICIAL QUB STUDENT!**

1. **QUB Study Abroad Application Form.**
2. **Accept Offer** - You will receive an offer letter email, you **MUST** officially confirm your place with us to study at Queens. To do so, within your offer email please choose the option "I accept your offer and I will apply for a Visitor Visa for Study".
3. **Accommodation Form** - Once we have fully processed your application you will receive a student number via email. Once you receive your student number you must confirm your accommodation with us.
4. **Complete QGIS registration** - You will receive a 'Welcome Email' with full instructions in early December.
5. **School Module confirmation** – You will meet with your school to confirm your module choices.
6. **Matriculation** - Finally you complete Matriculation to be fully registered and collect your student card. This is the process of verifying your identification and qualifications. Booking links will be provided on the final step of Online Registration in QGIS.



QUEEN'S
UNIVERSITY
BELFAST

HEALTH & WELLBEING



ACCESSING HEALTHCARE

- UK Healthcare – NHS & Private
- Visiting students (6 months or less) use private healthcare cover
- Routine healthcare vs. emergency healthcare access

Types of health centre: GP, Pharmacy, Hospital, Accident & Emergency (A&E)

You should only use A&E Departments for emergency treatment for serious illness or injury

Emergency number – call **999**

COVID19

Testing for Covid-19 is free of charge if you have symptoms. NHS treatment for people who are infected with Coronavirus is also free of charge for everyone – immigration status is irrelevant.



**QUEEN'S
UNIVERSITY
BELFAST**

**DISABILITY
AND WELLBEING**



EVENTS

We run a variety of events to help students protect, maintain and improve their wellbeing.

All students can take part in our WOW (Wellbeing on Weekdays) events programme.

Check out the schedule at go.qub.ac.uk/WOWEvents



DROP-IN

Monday-Friday, 11:00am-3:00pm

We offer guidance on personal and academic related issues that are impacting on your wellbeing.



Call us: 07387 546 123



Online: go.qub.ac.uk/drop-in



Visit us: Level 1,
Student Guidance Centre



SAFE & HEALTHY RELATIONSHIPS

We have a specialist Safe & Healthy Relationships

Adviser to support students affected by sexual misconduct, bullying, harassment, or hate crime.

Students can report issues anonymously or with their details at: reportandsupport.qub.ac.uk



PSYCHOLOGICAL THERAPIES & OUT OF HOURS

Psychological therapies beyond our 9am - 5pm service are

offered in partnership with Inspire Wellbeing.

- **INSPIRE 24/7 Helpline | Freephone (Wellbeing Support) 0808 800 0016**
- **LIFELINE 24/7 Helpline | Freephone (Crisis Support) 0808 808 8000**
- **Your GP or Emergency Department:**
 - In an emergency, dial 999.
 - GP Out of Hours number (University Area): 028 9079 6220.

Find out more: go.qub.ac.uk/studentwellbeing

STUDENT GUIDANCE CENTRE



Open Monday to Friday

- Careers Service
- Resilience, Wellbeing and Counselling
- Disability Services
- Student Finance
- International Student Support
- Learning Development Service
- Student Administration



91A University Road
Tel: 028 9097 2727
Email: sgc@qub.ac.uk



QUEEN'S
UNIVERSITY
BELFAST

KEY CONTACTS



KEY CONTACTS

BEFORE YOU ARRIVE

General queries or signposting:

The AHSS Abroad team: ahssabroad@qub.ac.uk

Visa or admissions queries:

The Global Opportunities team: studyabroad@qub.ac.uk

Accommodation:

Accommodation team: accommodation@qub.ac.uk





QUEEN'S
UNIVERSITY
BELFAST

NEXT STEPS



QUEEN'S UNIVERSITY MOBILE APP



Search for "Queen's University Belfast" in Google Play Store and the Apple App Store

Use **Student number** and **Password** to log in

App shows you:

- PC availability,
- our campus map,
- your timetable,
- library services,
- your smart card

For more support, visit:- <http://go.qub.ac.uk/qubapp>



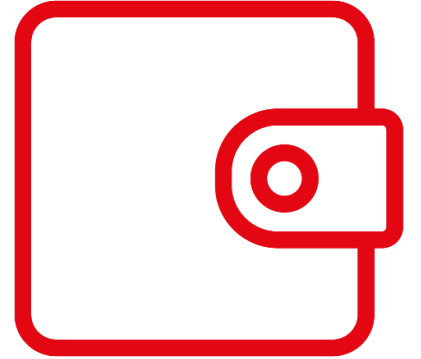
ACCESS TO MONEY ON ARRIVAL

It is important you arrive financially prepared for the first few weeks.

Options to be considered include:

- Monzo - <https://monzo.com/>
- Revolut – <https://www.revolut.com/cards>
- Apple Pay - <https://www.apple.com/uk/apple-pay/>
- Wise (TransferWise) - <https://wise.com/>

The University is **not** officially recommending use of any of these services.



YOUR NEXT STEPS

- Accept your offer & make any support disclosures required
- Double check visa you have requested in application
- Finalise your accommodation application – before 1st December!
- Complete the dietary requirements form before Christmas
- Familiarise yourself with your medical cover & think about prescriptions
- Familiarise yourself with current guidelines for travel and COVID

....watch Derry Girls...essential homework!





QUEEN'S
UNIVERSITY
BELFAST

Q&A

