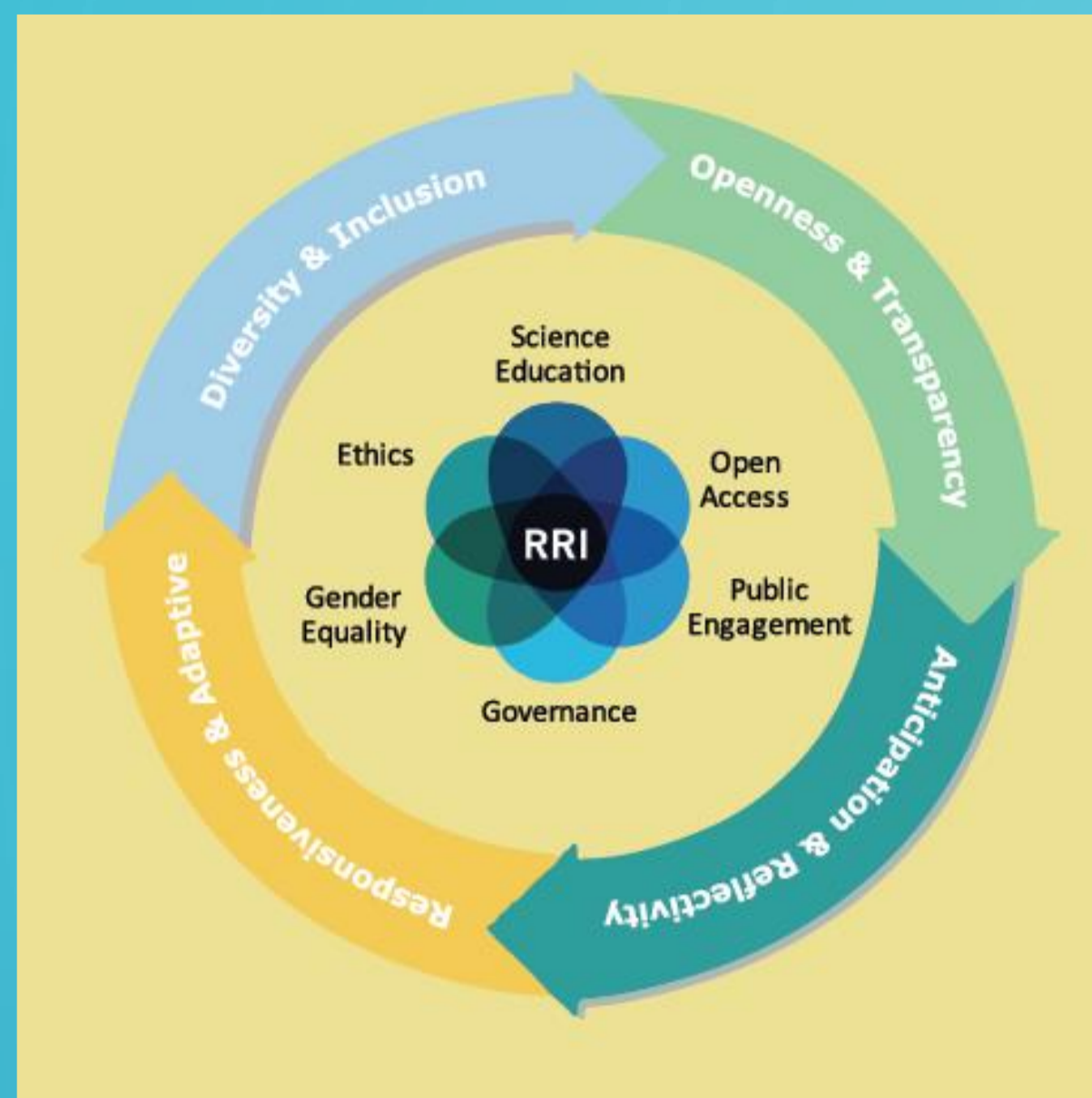


## WHAT IS RRI?



Source: RRI Tools Project  
[www.rri-tools.eu](http://www.rri-tools.eu)

## EnRRICH AIMS

- Build understanding of RRI in curricula
- Pilot RRI teaching practices and produce resources
- Test Science Shops as a way of incorporating RRI in curriculum
- Stimulate dialogue and leverage policy
- Enable mutual learning
- Build partnerships

“After ten years of action at EU level to develop and promote the role of science in society, at least one thing is very clear: we can only find the right answers to the challenges we face by involving as many stakeholders as possible in the research and innovation process. Research and innovation must respond to the needs and ambitions of society, reflect its values, and be responsible”

MÁIRE GEORGEAN-QUINN, European Commissioner for Research, Innovation and Science, 2012

## EnRRICH PARTNERS



## EnRRICH IN QUB

- Increasing awareness of RRI
- Supporting training
- Making the Most of Masters
- Seminars and talks

# Enhancing Responsible Research and Innovation (RRI) Through Curricula in Higher Education



## RESOURCES

- Good practices and case studies of RRI
- Newsletters and information
- Learning outcomes for RRI in Higher Education

[www.enrrich.eu](http://www.enrrich.eu)

## CONTACTS

For more information on EnRRICH in Queen's University Belfast contact Emma McKenna or Eileen Martin in The Science Shop [science.shop@qub.ac.uk](mailto:science.shop@qub.ac.uk)