

## Preventing Multiple Logins in Queen's Online


This document describes how to prevent multiple logins when using Queen's Online on your computer.

The steps are described for Microsoft Windows, using the **Internet Explorer**, **Google Chrome** and **Mozilla Firefox** browsers.

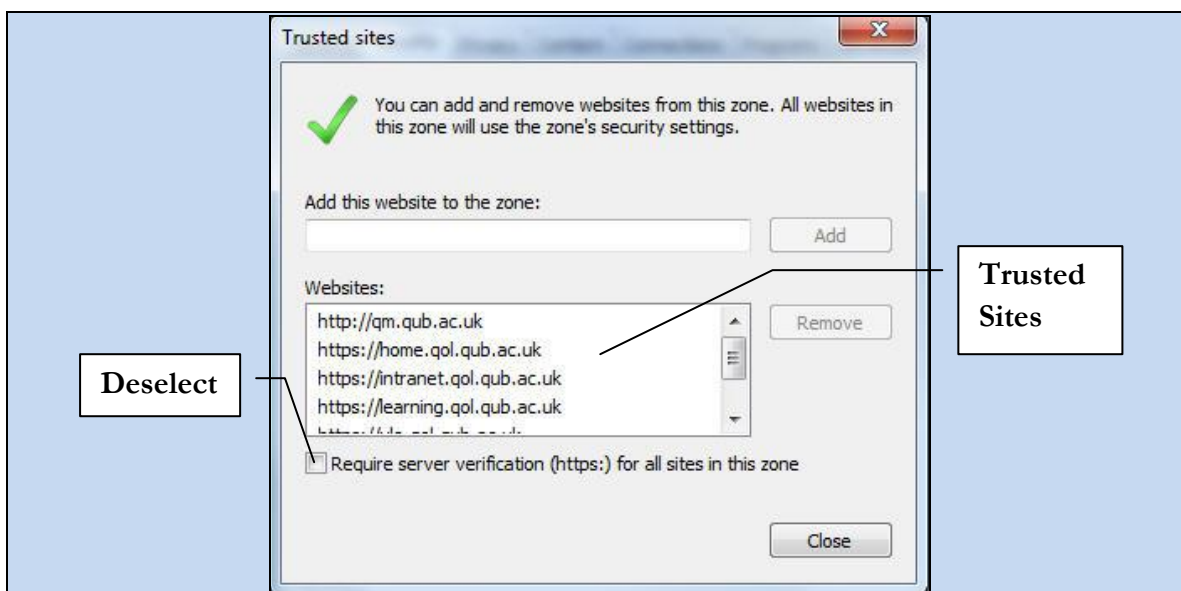
### Important Notes:

- Please ensure that your browsers are up to date (i.e. you have the latest version of the browser installed on your computer), otherwise aspects of Queen's Online may not function correctly.
- Please do not prevent multiple logins on any mobile devices, for example, if your laptop is stolen, the thief will not receive any password prompts!

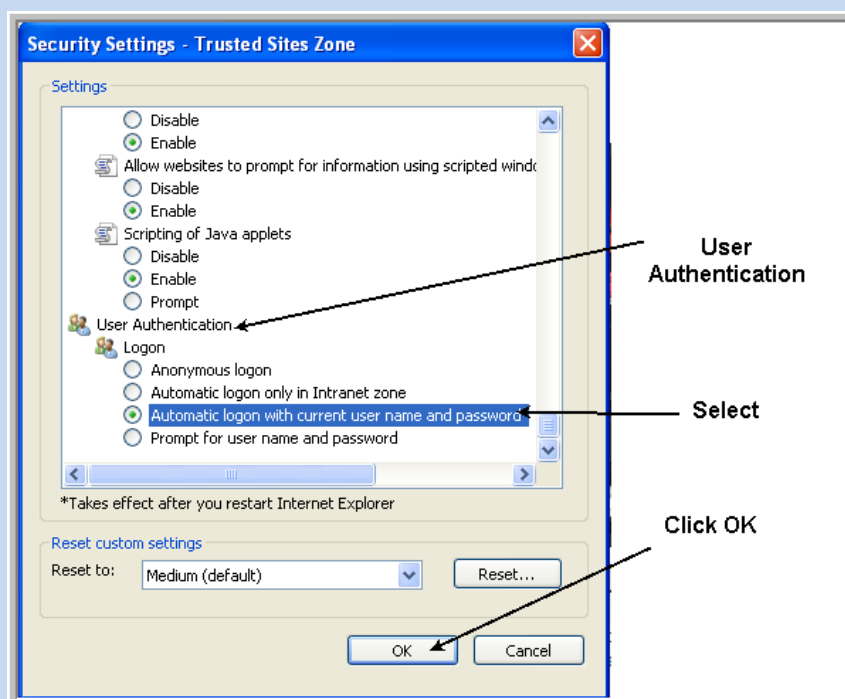
### Internet Explorer/Google Chrome

1. Click on the **Start** button  (bottom left corner of your screen) and in the **Search programs and files** field, type **internet options**
2. Below the heading **Control Panel**, choose **Internet Options** to display the **Internet Properties** dialogue box
3. Click on the **Security** tab
4. Click **once** to highlight **Trusted Sites** and click on the **Sites** button
5. In the **Add this website to the zone:** field, enter the following:  
<https://home.qol.qub.ac.uk>
6. Ensure **Require server verification (https:)** for all sites in this zone is **deselected**
7. Click **Add** to add this entry
8. Repeat **steps 5-7** to add the following websites:  
<https://learning.qol.qub.ac.uk>  
<https://crm.qol.qub.ac.uk>  
<https://vle.qol.qub.ac.uk>  
<https://library.qol.qub.ac.uk>  
<https://intranet.qol.qub.ac.uk>  
<http://qm.qub.ac.uk>

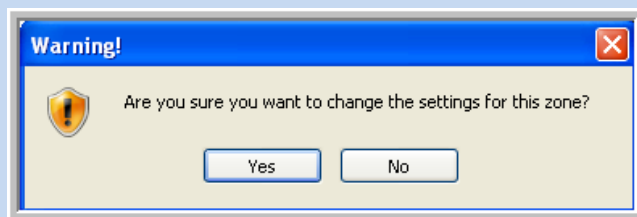
The following screenshot highlights your list of trusted sites:



9. Click on the **Close** button
10. Click on the **Custom Level...** button and scroll down to **User Authentication**
11. Under **User Authentication**, click to select **Automatic logon with current user name and password**



12. Click **OK**
13. You **may** get a warning (see the following screenshot), asking if you are sure you want to change the settings for this zone. Click **Yes**



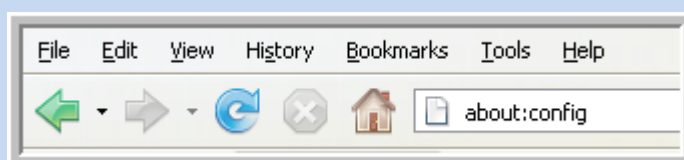
14. Click **OK** to close the dialogue box

15. The next time you login to the SharePoint site, select **Remember my Password**

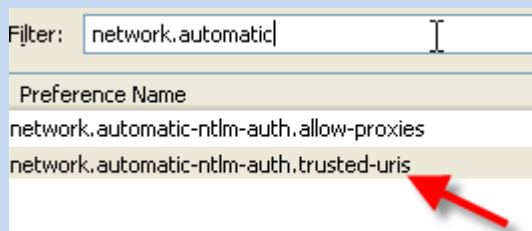
## Mozilla Firefox

1. Open **Mozilla Firefox**

2. Type **about:config** into the **Address Bar**. You may get a warning message, but continue on

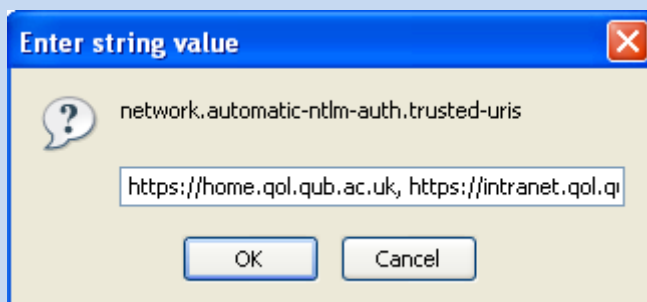


3. Locate **network.automatic-ntlm-auth.trusted-uris** – a shortcut is to type part of this into the filter box:



4. **Double-click** on **network.automatic-ntlm-auth.trusted-uris**

5. Enter the following web addresses (separate each with a comma):  
<https://home.qol.qub.ac.uk>, <https://intranet.qol.qub.ac.uk>,  
<https://vle.qol.qub.ac.uk>, <https://learning.qol.qub.ac.uk>, <http://qm.qub.ac.uk>,  
<https://library.qol.qub.ac.uk>



6. Click **OK**
7. Open **Mozilla Firefox** and enter <http://www.qub.ac.uk/qol> into the **Address Bar**
8. You may get the following message:



9. Click **Accept this certificate permanently** and click **OK**
10. Enter your **username** and **password**. Click the option to enable **Password Manager to remember the password** (if you wish)

