

SHAPING A
BETTER WORLD
FOR 180 YEARS



QUEEN'S
UNIVERSITY
BELFAST

UNDERGRADUATE
OPEN DAY
MAP AND GUIDE

PLAN YOUR DAY

SATURDAY 7 JUNE 2025

- ✓ Check-in by scanning your email ticket
- Visit subject information stands
- Attend a subject talk
- Visit the support services stands
- Go on a tour of Queen's Sport
- Take a tour of our BT1 and BT9 accommodation
- Hear a support services talk
- Go on a tour of our campus
- Check out One Elmwood Student Centre and Students' Union
- Take part in our lawn games

WIN A KODAK INSTANT CAMERA AND PRINTER!

You could win a Kodak instant Polaroid camera and printer bundle! Simply share a 15–30 second video of your Queen's Open Day experience on Instagram, Facebook, or TikTok using #QUBOpenDay2025.



To enter: Upload a 15–30 second video of your Open Day experience. Post it on Instagram, Facebook, or TikTok use the hashtag #QUBOpenDay2025.

Three lucky winners will receive: Kodak instant camera & printer
8 starter sheets + 60-sheet bundle.

*Terms & conditions apply

SUBJECT STANDS

Talk to our staff and students for course information. Speak to a representative from each school at:

JUNCTION CAFÉ

28

Faculty of Arts, Humanities and Social Sciences

School of Arts, English and Languages
School of History, Anthropology, Philosophy and Politics
School of Law
Queen's Business School
School of Social Sciences, Education and Social Work
St Mary's University College
Stranmillis University College

MANDELA HALL - ONE ELMWOOD

17

Faculty of Engineering and Physical Sciences

School of Chemistry and Chemical Engineering
School of Electronics, Electrical Engineering and Computer Science
School of Mathematics and Physics
School of Mechanical and Aerospace Engineering
School of Natural and Built Environment
School of Psychology

Faculty of Medicine, Health and Life Sciences

School of Biological Sciences
School of Medicine, Dentistry and Biomedical Sciences
School of Nursing and Midwifery
School of Pharmacy

SUPPORT SERVICES TALKS

MAIN TALKS	TIME	LOCATIONS
Accommodation (30mins)	9.45am 11.45am 1.45pm	The Great Hall 15
Admissions and Access (30mins)	10.30am 12.30pm 2.30pm	The Great Hall 15

A DAY IN THE LIFE OF A QUEEN'S STUDENT

Join current students in the Great Hall for a relaxed and insightful panel discussion. Hear first-hand about life at Queen's, their experiences, and top tips for making the most of your university experience. 1pm (45 mins) 15



SUPPORT SERVICES INFORMATION STANDS ONE ELMWOOD STUDENT CENTRE AND STUDENTS' UNION



Accommodation

Meet the team and find out everything you need to know about accommodation at Queen's.



Admissions and Access Service

Talk to admissions staff for detailed information about entry requirements.



Careers, Skills and Global Opportunities

Ask about the many activities that can develop your career and explore your options abroad.



Accessible Learning Support

Meet the team, they're here to help students with any information or support they might need.



Student Wellbeing Service

Talk to our Student Wellbeing Service team, who provide information and support to students.



Fees and Funding

Ask the team about our fees and funding options that are available to you.



Language Centre

Find out about the Language Centre which exists to support all students with opportunities to develop their language skills and cultural awareness.



Queen's Sport

Discover our world-class sport facilities, clubs, and scholarships.



Students' Union

Visit the SU to explore the range of support and services on offer; 220+ clubs and societies, volunteering and advice opportunities, shop, bar and much more!



Learning Development Service

Meet the team and find out about the academic support provided such as exam prep, academic writing, referencing and much more.

TOURS



ACCOMMODATION TOURS

ELMS BT9, MALONE ROAD

A bus will leave sharply from outside the Lanyon Gates every 20mins, from 9.20am – 3.20pm.

Due to high demand there may be a queue for the accommodation tours. Spaces on each bus will be on a first come first served basis.



ACCOMMODATION TOURS

ELMS BT1, CITY CENTRE



QUEEN'S SPORT TOURS

Tours of Queen's Sport will be available every 30 minutes from 9.30am – 2.30pm. Meet at the PEC foyer.

Discover why we are a premier sporting university. Take the eight minute walk through Botanic Gardens to see our advanced sports facilities for yourself.



CAMPUS TOURS

Departing from the Welcome Centre, campus tours will take place throughout the day from 9.30am - 2.30pm. Led by our Student Ambassadors, the tour will take in the main campus facilities including the Lanyon Building, McClay Library.



QUEEN'S BUSINESS SCHOOL TOURS

Bus departing from outside the Lanyon Gates every 30 minutes from 11am – 2pm. Discover our new innovative building called the Queen's Business School Student Hub which sits alongside the listed red-brick Riddel Hall.

GB DROP-IN CENTRE

STUDENTS FROM ENGLAND, SCOTLAND, WALES, CHANNEL ISLANDS AND ISLE OF MAN 17

Visit our GB Drop-in Centre at The Cube, One Elmwood, from 9.30am to 3pm. Drop by anytime to learn about studying at a Russell Group university and life in the vibrant city of Belfast.

- Learn more about our generous scholarship, which is available to students from Great Britain.
- Find out more about accommodation options available.
- Chat to current GB students about their experience of Queen's and life in Belfast.

In addition, we encourage you to attend our GB Information Talk at 9.30am, 10.30am and 1pm (45 mins) in the Blue Sky Room, One Elmwood 17

REBOOT GAMING CAFÉ

Calling all gamers! Your campus experience just got an epic upgrade with your new gaming paradise. This alcohol-free zone is the perfect between-classes hangout, study break destination, and weekend social spot. Tours will start at 9.30am 19



CLUBS AND SOCIETIES

Joining one of our 220+ clubs or societies allows you to meet new people, keep up your interest or develop a new passion. Chat to some current club and society members in One Elmwood Student Centre and Students' Union. 17

YOUR SPORTING FUTURE

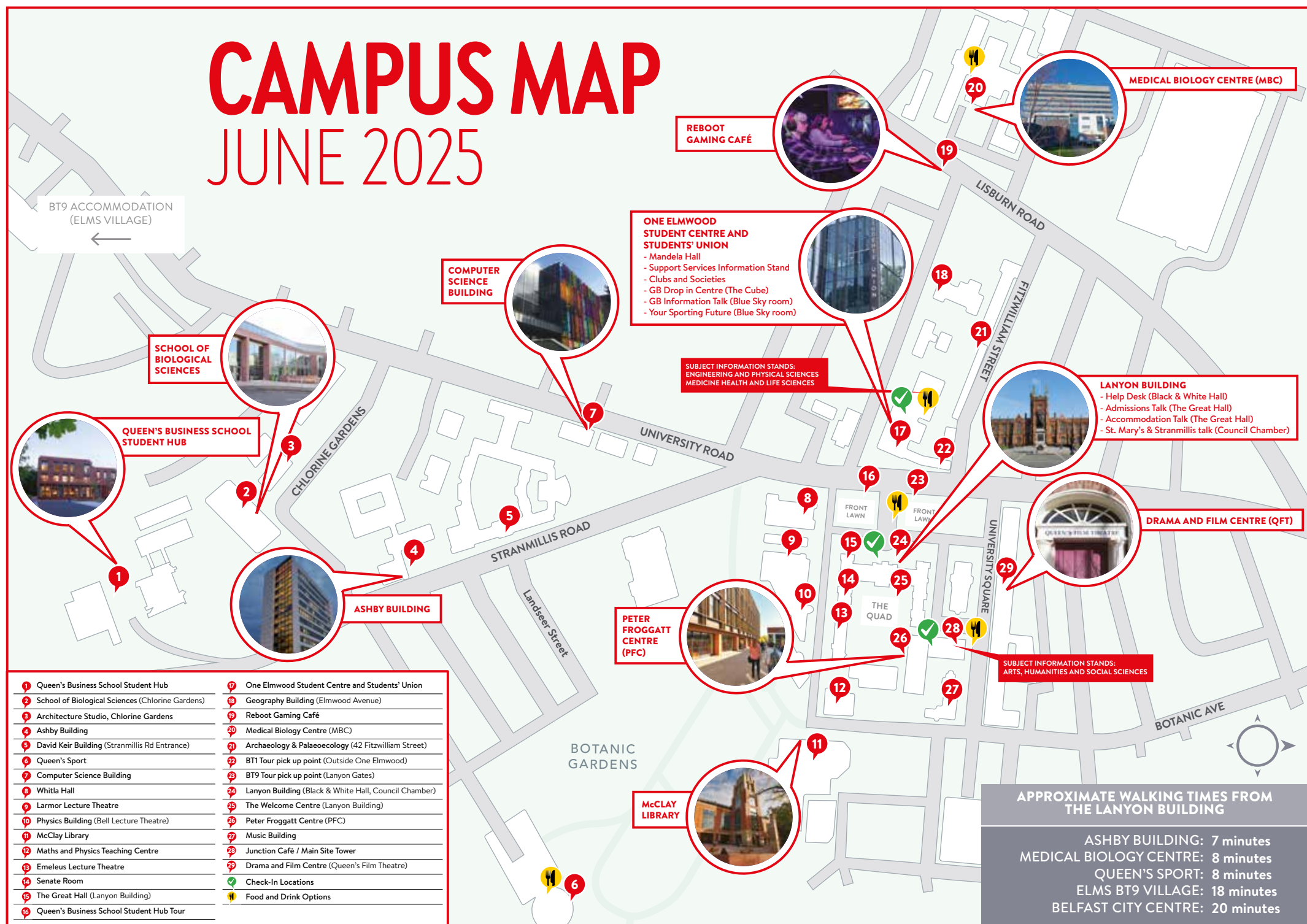
Maximising your Talent at Queens

This is a must-see session for aspiring student athletes – discover how you can benefit from our elite sporting facilities, clubs, scholarships, and expert support to reach your full potential. 11.30am, 2pm, Blue Sky Room 17



CAMPUS MAP

JUNE 2025



SUBJECT TALKS

- | | | | | | | | |
|--|--|--|--|--|--|--|---|
| 26 Accounting (Queen's Business School Overview)
Peter Froggatt Centre, OG.024
10am, 11am, 12pm (35 mins) | 3 Architecture
Ashby Building 03.014
10am, 12pm (30mins)
Tour immediately following subject talks | 26 Criminology
Peter Froggatt Centre, 02.026
10.30am, 11.30am (30mins) | 29 Film Studies and Production (followed by a taster session)
Drama and Film Centre (Queen's Film Theatre, 20 University Square), Screen 1 and Film Studio
10.30am, 11.30am (60 mins) | 26 International Business with a Language (Queen's Business School Overview)
Peter Froggatt Centre, OG.024
10am, 11am, 12pm (35 mins) | 27 Media and Broadcast Production
McMordie Hall, Music Building
11.30am, 12.30pm (30mins) | 10 Physics (including Astrophysics)
Physics Building, Bell Lecture Theatre
10am, 1pm (20mins)
Experiments in Maths and Physics Teaching Centre, 9.30am - 3pm | 26 Social Policy
Peter Froggatt Centre, 02.025
11.30am (30mins) |
| 26 Actuarial Science and Risk Management (Queen's Business School Overview)
Peter Froggatt Centre, OG.024
10am, 11am, 12pm (35 mins) | 2 Biochemistry
School of Biological Sciences, (Chlorine Gardens), Lecture Theatre
12.35pm (45mins) | 20 Dentistry
Medical Biology Centre, North Lecture Theatre
11am (30mins) | 26 Finance (Queen's Business School Overview)
Peter Froggatt Centre, OG.024
10am, 11am, 12pm (35 mins) | 20 International Relations
Peter Froggatt Centre, 02.018
10am, 1.30pm (30mins) | 20 Medicine
Medical Biology Centre, Lecture Theatre 1
10am, 11.30am, 1pm (30mins) | 5 Planning
David Keir Building, 03.010 (Stranmillis Rd Entrance)
12pm (60mins) | 26 Social Work
Peter Froggatt Centre, OG.007
12pm (30mins) |
| 4 Aerospace Engineering and Mechanical Engineering
Ashby Building-GM.001
10.30am, 12.30pm (30mins)
Tour immediately following subject talks | 2 Biological Sciences
School of Biological Sciences (Chlorine Gardens), Lecture Theatre
11.45am (45mins) | 29 Drama
Drama and Film Centre (Queen's Film Theatre, 20 University Square), Brian Friel Theatre
10.30am, 11.30am (30mins) | 26 Financial Risk Management (Queen's Business School Overview)
Peter Froggatt Centre, OG.024
10am, 11am, 12pm (35 mins) | 20 InterSim Centre Walkthrough (For students interested in Medicine, Dentistry, Pharmacy, Nursing & Midwifery)
Medical Biology Centre
10.30am-2pm | 2 Microbiology
School of Biological Sciences (Chlorine Gardens), Lecture Theatre
10.50am (45mins) | 26 Post-Primary Teaching (PGCE)
Peter Froggatt Centre, 03.006A
11.30am (30mins) | 24 St Mary's University College
Lanyon Building, Council Chamber
11am, 1pm (30 mins) |
| 2 Agricultural Technology
School of Biological Sciences (Chlorine Gardens), Seminar Room 1
10am (45mins) | 20 Biomedical Science and Human Biology
Medical Biology Centre, South Lecture Theatre
10.45am, 12.30pm (30mins) | 26 Economics and Business Economics (Queen's Business School Overview)
Peter Froggatt Centre, OG.024
10am, 11am, 12pm (35 mins) | 2 Food Science and Nutrition
School of Biological Sciences, (Chlorine Gardens), Small Lab
11am (45mins) | 26 Irish
Peter Froggatt Centre, 02.009
10.30am (30mins) | 20 Midwifery
Medical Biology Centre, North Lecture Theatre
11.45am (30mins) | 26 Portuguese, Spanish, French
Peter Froggatt Centre, 02.018
10.30am, 12pm (30 mins) | 26 Sociology
Peter Froggatt Centre, 02.026
11am, 12pm (30mins) |
| 2 Agricultural Sciences
School of Biological Sciences (Chlorine Gardens), Seminar Room 1
11am (45mins) | 26 Business Management (Queen's Business School Overview)
Peter Froggatt Centre, OG.024
10am, 11am, 12pm (35mins) | 26 Education Studies
Peter Froggatt Centre, 03.006A
10.30am, 12pm (30mins) | 2 French, Spanish, Portuguese
Peter Froggatt Centre, 02.018
10.30am, 12pm (30mins) | 26 Law
Peter Froggatt Centre, OG.007
11am, 1pm, 2pm (30mins) | 27 Music and Audio Production, Audio Engineering, Music and Sound Design, Music, and Music Performance
Harty Room, Music Building
10am, 11am, 12pm (30mins) | 26 Politics, Philosophy & Economics (PPE)
Peter Froggatt Centre, 02.017
11am, 12.30pm (30mins) | 24 Stranmillis University College
Lanyon Building, Council Chamber
2pm (30 mins) |
| 26 Anthropology
Peter Froggatt Centre, 02.025
10am, 1pm (30mins) | 5 Chemistry and Chemical Engineering (followed by a demo and tour)
David Keir Building OG/110 (Stranmillis Entrance)
10.30am (90mins) | 4 Electrical and Electronic Engineering (Robotics demos)
Ashby Building Sustainable Energy Lab ASH/01.018
11.30am, 1pm (45mins) | 26 Geography (Demos and tour)
Geography Building OG.029
10.30am 12pm (60 mins) | 28 Law School -Free Flow access to Moot Court and Seminar Rooms
Main Site Tower
9.30am - 3pm | 20 Nursing
Medical Biology Centre, North Lecture Theatre
10am, 1.15pm (30mins) | 5 Psychology at Queen's Talk followed by a Q&A
David Keir Building OG.115 (Stranmillis Road Entrance)
12pm (60 mins) | 26 Spanish, French, Portuguese
Peter Froggatt Centre, 02.018
10.30am, 12pm (30 mins) |
| 21 Archaeology and Palaeoecology
Archaeology and Palaeoecology Centre, 42 Fitzwilliam Street Room OG.043
11.30am, 1.30pm (30mins)
Tour immediately following subject talks | 5 Civil Engineering (talk and demonstrations)
David Keir Building OG.012 (Stranmillis Entrance)
10am, 12.30pm (1.5 hours) | 13 English
Emeleus Lecture Theatre
11am, 12pm (30mins) | 13 History
Emeleus Lecture Theatre
10am, 1pm (30mins) | 26 Liberal Arts
Peter Froggatt Centre, 02.011
11am, 1pm (30mins) | 20 Pharmacy, Pharmaceutical Sciences and Pharmaceutical Biotechnology
Medical Biology Centre, South Lecture Theatre
9.45am, 11.30am, 1.15pm (45mins) | 2 School of Biological Sciences Welcome
School of Biological Sciences, Chlorine Gardens, Lecture Theatre
9.30am (30mins) | 2 Veterinary Biosciences
School of Biological Sciences, (Chlorine Gardens), Seminar Room 2
11am (45mins) |
| | 7 Computing
Computer Science Building 02.027
10am, 12pm (30mins)
Tours from foyer 9am, 12.15pm | 2 Environmental Management
School of Biological Sciences (Chlorine Gardens), Small Lab
10am (45mins) | | 10 Mathematics
Physics Building, Bell Lecture Theatre
10.30am, 1.30pm (20 mins) | 26 Philosophy
Peter Froggatt Centre, 02.025
1.30pm (30mins) | 2 Zoology
School of Biological Sciences, (Chlorine Gardens) Lecture Theatre
10am (45mins) | |