



QUEEN'S
UNIVERSITY
BELFAST

UNDERGRADUATE OPEN DAY

SATURDAY 6 SEPTEMBER 2025

PLAN YOUR DAY

- ✓ Check in by scanning your email ticket
- Visit subject information stands
- Attend a subject talk
- Visit the support services stands
- Go on a tour of Queen's Sport
- Take a tour of our BT1 and BT9 accommodation
- Hear a support services talk
- Go on a tour of our campus
- Check out One Elmwood Student Centre and Students' Union
- Take part in our lawn games

CHECK IN TO WIN

Kickstart your Open Day experience by checking in as soon as you arrive — It's quick, easy, and gives you the chance to win a prize!

Use the campus map where the 🟢🟢🟢 will show you the different check in locations available.

Every student who checks in will be automatically entered into a prize draw to win an exclusive Queen's University Bundle Pack with awesome Queen's merch and student essentials.

*Terms & conditions apply

SUBJECT STANDS

Talk to our staff and students for course information. Speak to a representative from each school at:

JUNCTION CAFÉ 9.30 AM - 3.00 PM

Faculty of Arts, Humanities and Social Sciences

School of Arts, English and Languages
School of History, Anthropology, Philosophy and Politics
School of Law
Queen's Business School
School of Social Sciences, Education and Social Work
St Mary's University College
Stranmillis University College

WHITLA HALL 9.30 AM - 3.00 PM

Faculty of Engineering and Physical Sciences

School of Chemistry and Chemical Engineering
School of Electronics, Electrical Engineering and Computer Science
School of Mathematics and Physics
School of Mechanical and Aerospace Engineering
School of Natural and Built Environment
School of Psychology

Faculty of Medicine, Health and Life Sciences

School of Biological Sciences
School of Medicine, Dentistry and Biomedical Sciences
School of Nursing and Midwifery
School of Pharmacy

SUPPORT SERVICES TALKS

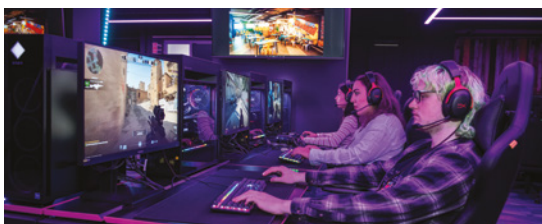
MAIN TALKS	TIME & LOCATIONS
Accommodation, Admissions and Access Service, Careers, Employability and Skills, Accessible Learning Support, Fees and Funding, Queen's Sport, Students' Union, The Language Centre, Wellbeing Services, Learning Development Service	9.30am - 3.00pm One Elmwood Foyer
Accommodation Talks (Sessions 1 - 3)	9.45am - 10.15am 11.15am - 11.45am 2.00pm - 2.30pm The Great Hall
Admissions - Next Steps (Sessions 1 - 2)	10.30am - 11.00am 1.15pm - 1.45pm The Great Hall
Your Sporting Future: Maximising your Talent at Queen's (Session 1 - 2)	11.30am - 12.00pm 2.00pm - 2.30pm Blue Sky Room, One Elmwood
MAIN TALKS	TIME & LOCATION
Student Panel: Ask our student's what they think about studying at Queen's	12.15pm - 1.00pm The Great Hall

GB DROP IN CENTRE

MAIN TALKS	TIME & LOCATIONS
Chat to students from Great Britain	9.30am - 3.00pm The Cube, One Elmwood
Great Britain Welcome Talks (Sessions 1 - 3)	9.30am - 10.15am 10.30am - 11.15am 1.00pm - 1.45pm Blue Sky Room, One Elmwood

REBOOT GAMING CAFÉ

Queen's innovative, alcohol-free gaming and social hub across three vibrant floors. Drop in for retro arcade classics, a massive board game lounge, high-end console and VR setups, and Ireland's only Red Bull F1 racing simulator. Upstairs, our esports arena with 30 PCs hosts casual play, tournaments, and livestream events. Open to all, recognized nationally for enhancing student experience.



TOURS

 ACCOMMODATION TOURS (ELMS BT9) Malone Road	 ACCOMMODATION TOURS (ELMS BT1) City Centre	 QUEEN'S SPORT TOURS (PEC) 9.30am - 2.30pm Tours of Queen's Sport will be available every 30 minutes. Meet at the PEC foyer. Discover why we are a premier sporting university. Take the eight minute walk through Botanic Gardens to see our advanced sports facilities for yourself.	 QUEEN'S BUSINESS SCHOOL TOURS 11.00am - 2.00pm Bus departing from outside the Lanyon Gates every 30 minutes. Discover our new innovative building called the Queen's Business School Student Hub which sits alongside the listed red-brick Riddel Hall.	 CAMPUS TOURS 9.30am - 2.30pm Departing from the Welcome Centre, campus tours will take place throughout the day. Led by our Student Ambassadors, the tour will take in the main campus facilities including the Lanyon Building, McClay Library.
 CHEMISTRY AND CHEMICAL ENGINEERING 11.45am - 2.00pm David Keir Building Foyer, Stranmillis Road Depart from School Reception, for tours of labs and facilities.	 MECHANICAL ENGINEERING AND AEROSPACE ENGINEERING 10.00am - 10.30am, 12.15pm - 2.00pm Ashby Foyer Facility Tours of the Ashby Building.	 COMPUTER SCIENCE 10.30am - 11.15am, 1.00pm - 1.45pm Computer Science Building, Malone Road Tour of the Computer Science Building.	 INTERSIM CENTRE 10.00am - 2.00pm Medical Biology Centre Drop-in sessions, demonstrations, and tours at the Medical Biology Centre.	 NURSING 10.30am - 11.00am, 1.45pm - 2.15pm Medical Biology Centre Tour of Medical Biology Centre facilities, North Lecture Theatre.

CLUBS AND SOCIETIES

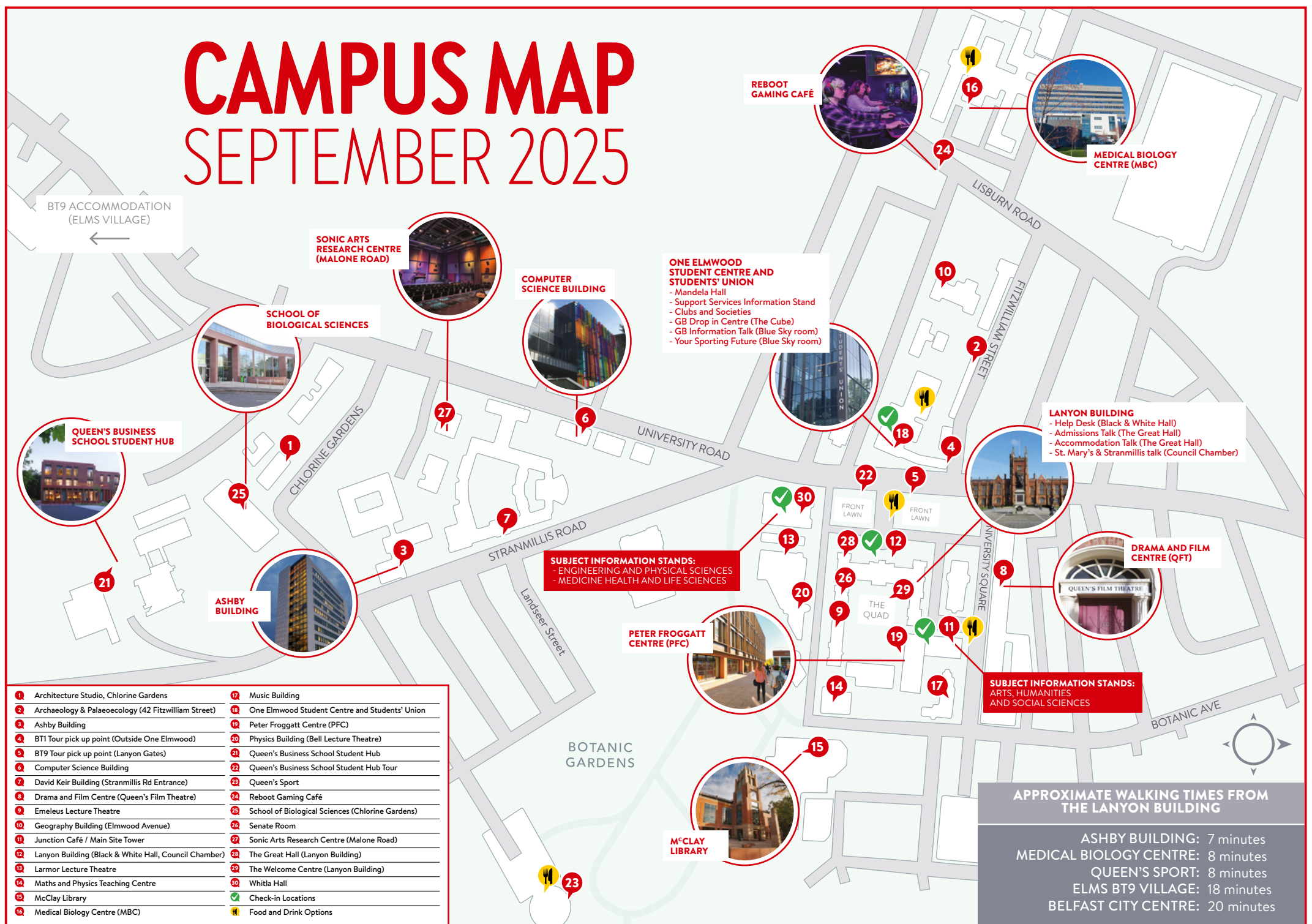
Joining one of our 220+ clubs or societies is a great way to meet new people, keep up your interests, or discover a new passion. From well-loved favourites like soccer, gaelic, rugby, camogie, hockey, basketball and hurling to the unexpected like underwater hockey, floorball, dodgeball, sub-aqua diving or cheerleading with the Queen's Knights – or more niche interests like Queen's Radio, Scrubs, or the English Society – there's something for everyone.

With access to state-of-the-art facilities, it's easy to train, compete, or simply connect with likeminded people. Chat to current members in One Elmwood Student Centre and Students' Union.



CAMPUS MAP

SEPTEMBER 2025



SUBJECT TALKS

- | | | | | | | | |
|--|---|--|--|---|---|--|--|
| <p>19. Accounting (Queen's Business School Overview)
Peter Froggatt Centre OG.024
10.00am, 11.00am, 12.00pm, 1.00pm (35 mins)</p> | <p>25. Biochemistry
School of Biological Sciences, Chlorine Gardens Lecture Theatre
10.00am (45 mins)</p> | <p>6. Computing
Computer Science Building, 02.027
10.00am, 12.00pm (30 mins)
Tours from foyer at 10.00am and 12.30pm</p> | <p>8. Film Studies and Production
Drama and Film Centre
Queen's Film Theatre Screen 2 & Film Studio
10.30am, 11.30am (60 mins)
Followed by a taster session</p> | <p>19. International Business with a Language (Queen's Business School Overview)
Peter Froggatt Centre OG.024
10.00am, 11.00am, 12.00pm, 1.00pm (35 mins)</p> | <p>25. Marine Biology
School of Biological Sciences, Chlorine Gardens Lecture Theatre
12.30pm (45 mins)</p> | <p>17. Music and Audio Production, Audio Engineering, Music and Sound Design, Music, and Music Performance
Harty Room, Music Building
10.00am, 11.00am (60 mins)
Followed by a tour</p> | <p>13. Politics
Larmor Lecture Theatre
10.30am, 1.00pm (30 mins)</p> |
| <p>19. Actuarial Science and Risk Management (Queen's Business School Overview)
Peter Froggatt Centre OG.024
10.00am, 11.00am, 12.00pm, 1.00pm (35 mins)</p> | <p>25. Biochemistry
School of Biological Sciences, Chlorine Gardens Small Lab
2.05pm (45 mins)</p> | <p>19. Criminology
Peter Froggatt Centre 02.026
10.30am, 11.30am (30 mins)</p> | <p>19. Finance (Queen's Business School Overview)
Peter Froggatt Centre OG.024
10.00am, 11.00am, 12.00pm, 1.00pm (35 mins)</p> | <p>19. International Relations
Peter Froggatt Centre 02.018
10.00am, 1.30pm (30 mins)</p> | <p>20. Mathematics
Bell Lecture Theatre
10.30am, 1.30pm (20 mins)</p> | <p>16. Nursing
Medical Biology Centre Lecture Theatre 1
10.45am, 1.45pm (Talk 30 mins)
11.15am, 2.45pm (tour)
Subject talk and tour of facilities</p> | <p>19. Politics, Philosophy & Economics (PPE)
Peter Froggatt Centre 02.017
11.00am, 12.30pm (30 mins)</p> |
| <p>3. Aerospace Engineering and Mechanical Engineering
Ashby Building GM.001
10.30am, 12.30pm (30 mins)
Tours immediately following subject talks</p> | <p>25. Biological Sciences
School of Biological Sciences, Chlorine Gardens Lecture Theatre
10.50am, 2.05pm (45 mins)</p> | <p>19. Dentistry
Peter Froggatt Centre OG.007
10.00am (30 mins)</p> | <p>8. Drama
Drama and Film Centre
Queen's Film Theatre, 20 University Square, Brian Friel Theatre
10.30am, 11.30am (30 mins)</p> | <p>19. Irish
Peter Froggatt Centre 02.009
10.30am (30 mins)</p> | <p>14. Experiments in Maths and Physics Teaching Centre
9.30am – 3.00pm</p> | <p>16. Pharmacy, Pharmaceutical Sciences & Pharmaceutical Biotechnology
Medical Biology Centre South Lecture Theatre
09.45am, 11.30am, 1.15pm
Subject talk including virtual tour of facilities</p> | <p>19. Politics and Sociology
Peter Froggatt Centre 02.017
10.00am, 12.00pm (30 mins)</p> |
| <p>25. Agricultural Sciences
School of Biological Sciences, Chlorine Gardens Seminar Room 1
10.00am, 12.00pm (45 mins)</p> | <p>16. Biomedical Science and Human Biology
Medical Biology Centre South Lecture Theatre
10.45am, 12.30pm (30 mins)</p> | <p>19. Economics and Business Economics (Queen's Business School Overview)
Peter Froggatt Centre OG.024
10.00am, 11.00am, 12.00pm, 1.00pm (35 mins)</p> | <p>19. Financial Risk Management (Queen's Business School Overview)
Peter Froggatt Centre OG.024
10.00am, 11.00am, 12.00pm, 1.00pm (35 mins)</p> | <p>19. Irish and Broadcast Production
Peter Froggatt Centre 02.009
10.00am (30 mins)</p> | <p>27. Media & Broadcast Production
Sonic Arts Research Centre, Sonic Lab, Malone Road
11.30am, 12.30pm (60 mins)
Followed by a tour</p> | <p>16. Medicine
Lecture Theatre 1, Medical Biology Centre
10.00am, 11.30am, 1.00pm (30 mins)
Subject Talk and Q&A</p> | <p>19. Social Policy
Peter Froggatt Centre 02.025
11.30am (30 mins)</p> |
| <p>19. Anthropology
Peter Froggatt Centre 02.025
10.00am, 1.00pm (30 mins)</p> | <p>19. Business Management (Queen's Business School Overview)
Peter Froggatt Centre OG.024
10.00am, 11.00am, 12.00pm, 1.00pm (35 mins)</p> | <p>26. Education Studies
Senate Room
10.30am, 12.00pm (30 mins)</p> | <p>25. Food Science and Nutrition
School of Biological Sciences, Chlorine Gardens Seminar Room 2
11.00am, 1.00pm (45 mins)</p> | <p>19. Languages (French, Spanish, Portuguese)
Peter Froggatt Centre 02.018
11.00am, 12.30pm (30 mins)</p> | <p>16. Microbiology
Lecture Theatre 1, Medical Biology Centre
10.00am, 11.30am, 1.00pm (30 mins)
Subject Talk and Q&A</p> | <p>19. Philosophy
Peter Froggatt Centre 02.025
1.30pm (30 mins)</p> | <p>19. Social Work
Peter Froggatt Centre OG.007
12.00pm (30 mins)</p> |
| <p>2. Archaeology and Palaeoecology
42 Fitzwilliam Street, Archaeology and Palaeoecology Centre, Room G43
11.30am, 1.30pm (30 mins)
Tours immediately following subject talks at 12pm and 2pm</p> | <p>7. Chemistry and Chemical Engineering
David Keir Building OG.110 (Stranmillis Entrance)
10.30am (90 mins)
Course talk followed by laboratory demonstrations and optional tour</p> | <p>3. Electrical and Electronic Engineering
Ashby Building Sustainable Energy Lab ASH/01.018
11.30am, 1.00pm (45 mins)
Course talk and robotics demos</p> | <p>19. Games Technologies
Peter Froggatt Centre 02.011
10.30am, 12.30pm (30 mins)</p> | <p>19. Law
Peter Froggatt Centre OG.007
11.00am, 1.00pm, 2.00pm (30 mins)
Free flow access to Moot Court and Seminar Rooms – 9.30am to 3.00pm, Main Site Tower</p> | <p>25. Microbiology
School of Biological Sciences, Chlorine Gardens Small Lab
10.50am (45 mins)</p> | <p>20. Physics (including Astrophysics)
Bell Lecture Theatre
10.00am, 1.00pm (20 mins)</p> | <p>26. Teaching (Post-Primary PGCE)
Senate Room
11.30am (30 mins)</p> |
| <p>1. Architecture
15 Chlorine Gardens
10.00am, 12.00pm (30 mins)
Tours immediately following subject talks</p> | <p>7. Civil Engineering
David Keir Building OG.012 (Stranmillis Entrance)
10.00am, 12.30pm (2 hours)
Course talk and demonstrations</p> | <p>9. English
Emeleus Lecture Theatre
11.00am, 12.00pm (30 mins)</p> | <p>10. Geography
Geography Building OG.029
10.30am, 12.00pm (1 hour)
Course talk, demos, tour</p> | <p>19. Liberal Arts
Peter Froggatt Centre 02.011
11.00am, 1.00pm (30 mins)</p> | <p>16. Midwifery
Medical Biology Centre Lecture Theatre 1
12.15pm (Talk, 30mins), 12.45pm (Tour, 30mins)
Subject talk and tour of facilities</p> | <p>14. Experiments in Maths and Physics Teaching Centre
9.30am – 3.00pm</p> | <p>25. Veterinary Biosciences
School of Biological Sciences, Chlorine Gardens Small Lab
11.40am, 2.55pm</p> |
| | | | <p>9. History
Emeleus Lecture Theatre
10.00am, 1.00pm (30 mins)</p> | <p>25. Marine Biology
School of Biological Sciences, Chlorine Gardens Seminar Room 1
10.50am (30 mins)</p> | <p>20. Theoretical Physics
Bell Lecture Theatre
11.00am, 2.00pm (20 mins)</p> | <p>7. Planning
David Keir Building, 03.010 (Stranmillis Entrance)
12.00pm (1 hour)</p> | <p>25. Zoology
School of Biological Sciences, Chlorine Gardens Small Lab
10.00am, 1.20pm</p> |