



QUEEN'S IS
LIKE NO OTHER

UNDERGRADUATE OPEN DAYS

PLAN YOUR DAY

- Visit subject information stands
- Attend a subject talk
- Visit the support services stands
- Hear a support services talk
- Take a tour of our BT1 and BT9 accommodation
- Go on a tour of Queen's Sport
- Go on a tour of our campus
- Check out One Elmwood Student Centre and Students' Union
- Take part in our lawn games
- Grab some free donuts and pick 'n' mix

CHECK-IN TO WIN

Check-in by scanning your email ticket at one of our Check-in locations. This will let us know that you have arrived safely for our Open Day.

After you check-in, you will automatically be entered into our competition to **WIN ONE YEAR'S ACCOMMODATION***

Check-in locations at:

- Black and White Hall
- Junction Café
- Elmwood Hall
- One Elmwood Student Centre and Students' Union

The lucky winner gets all this:

- One year's accommodation
- En-suite room
- Free WiFi
- Queen's Sport membership
- Contents insurance
- 24/7 maintenance and support

*Terms & conditions apply

SUBJECT STANDS

Talk to our staff and students for course information. Speak to a representative from each school at:

JUNCTION CAFÉ

Faculty of Arts, Humanities and Social Sciences
School of Arts, English and Languages
School of History, Anthropology, Philosophy and Politics
School of Law
Queen's Business School
School of Social Sciences, Education and Social Work
St Mary's University College
Stranmillis University College

ELMWOOD HALL

Faculty of Engineering and Physical Sciences
School of Chemistry and Chemical Engineering
School of Electronics, Electrical Engineering and Computer Science
School of Mathematics and Physics
School of Mechanical and Aerospace Engineering
School of Natural and Built Environment
School of Psychology
Faculty of Medicine, Health and Life Sciences
School of Biological Sciences
School of Medicine, Dentistry and Biomedical Sciences
School of Nursing and Midwifery
School of Pharmacy

SUPPORT SERVICES TALKS

MAIN TALKS	TIME	LOCATIONS
Accommodation (30 mins)	9.45am - 11.45am - 1.45pm	The Great Hall
Admissions and Access (30 mins)	10.30am - 12.30pm - 2.30pm	The Great Hall
Careers, Employability and Skills	10.00am - 12.20pm	Blue Sky Room, One Elmwood
Disability Services	10.20am - 12.40pm	Blue Sky Room, One Elmwood
Language Centre	10.40am - 1.00pm	Blue Sky Room, One Elmwood
Learning Development Service	11.00am - 1.20pm	Blue Sky Room, One Elmwood
Queen's Sport	11.20am - 1.40pm	Blue Sky Room, One Elmwood
Students' Union	11.40am - 2.00pm	Blue Sky Room, One Elmwood
Student Wellbeing Service	12.00pm - 2.20pm	Blue Sky Room, One Elmwood

SUPPORT SERVICES INFORMATION STANDS Mandella Hall, One Elmwood



Accommodation
Meet the team and find out everything you need to know about accommodation at Queen's.



Admissions and Access Service
Talk to admissions staff for detailed information about entry requirements.



Careers, Skills and Global Opportunities
Ask about the many activities that can develop your career and explore your options abroad.



Disability Services
Talk to our Disability team, who provide information and support to students.



Student Wellbeing Service
Talk to our Student Wellbeing Service team, who provide information and support to students.



Fees and Funding
Ask the team about our flexible fees and funding options that are available to you.



Language Centre
Learn more about exploring your opportunities by learning a foreign language.



Queen's Sport
Talk to Queen's Sport and find out about our incredible sporting facilities on campus.



Students' Union
Visit the SU to explore the range of support and services on offer; 220+ clubs and societies, volunteering and advice opportunities, shop, bar and much more!



Learning Development Service
Meet the team and find out about the academic support we provide such as exam prep, academic writing, referencing and much more.

TOURS



ACCOMMODATION TOURS
ELMS BT9, MALONE ROAD

A bus will leave sharply from outside the Lanyon Gates every 20mins, from 9.20am - 3.20pm.

Due to high demand there may be a queue for the accommodation tours. Spaces on each bus will be on a first come first serve basis.



ACCOMMODATION TOURS
ELMS BT1, CITY CENTRE



QUEEN'S SPORT TOURS
Tours of the Physical Education Centre (PEC) will be available every 30 minutes from 9.30am - 3pm. Meet at the PEC foyer.

Discover why we're a premier sporting university. Take the ten minute walk through Botanic Gardens to see our advanced Physical Education Centre for yourself.



CAMPUS TOURS
Departing from the Welcome Centre, campus tours will take place throughout the day from 9.30am - 2.30pm. Led by our Student Ambassadors, the tour will take in the main campus facilities including the Lanyon Building, McClay Library and One Elmwood Student Centre and Students' Union.



QUEEN'S BUSINESS SCHOOL TOURS
Departing from outside the Lanyon Gates, tours of the new Queen's Business School will run every 30 minutes from 11am - 2pm. Discover our new innovative building called the Queen's Business School Student Hub which sits alongside the listed red-brick Riddel Hall.

GB DROP-IN CENTRE

STUDENTS FROM ENGLAND, SCOTLAND, WALES, CHANNEL ISLANDS AND ISLE OF MAN

We have a dedicated GB Drop-in Centre located in the Cube, One Elmwood Student Centre and Students' Union. Staff and students will be available throughout the day, so drop in at a time that suits you, and find out more about studying at a Russell Group university and living in the vibrant city of Belfast.

- Learn more about our generous scholarship, which is available to students from Great Britain.
- Find out more about accommodation options available.
- Chat to current GB students about their experience of Queen's and life in Belfast.

In addition, we encourage you to attend our GB Information Talk at 10am and 1.30pm in the Larmour Lecture Theatre.

CLUBS AND SOCIETIES

Joining one of our 220+ clubs or societies allows you to meet new people, keep up your interest or develop a new passion. Chat to some current club and society members in the SU foyer in One Elmwood Student Centre and Students' Union

FOOD AND DRINK

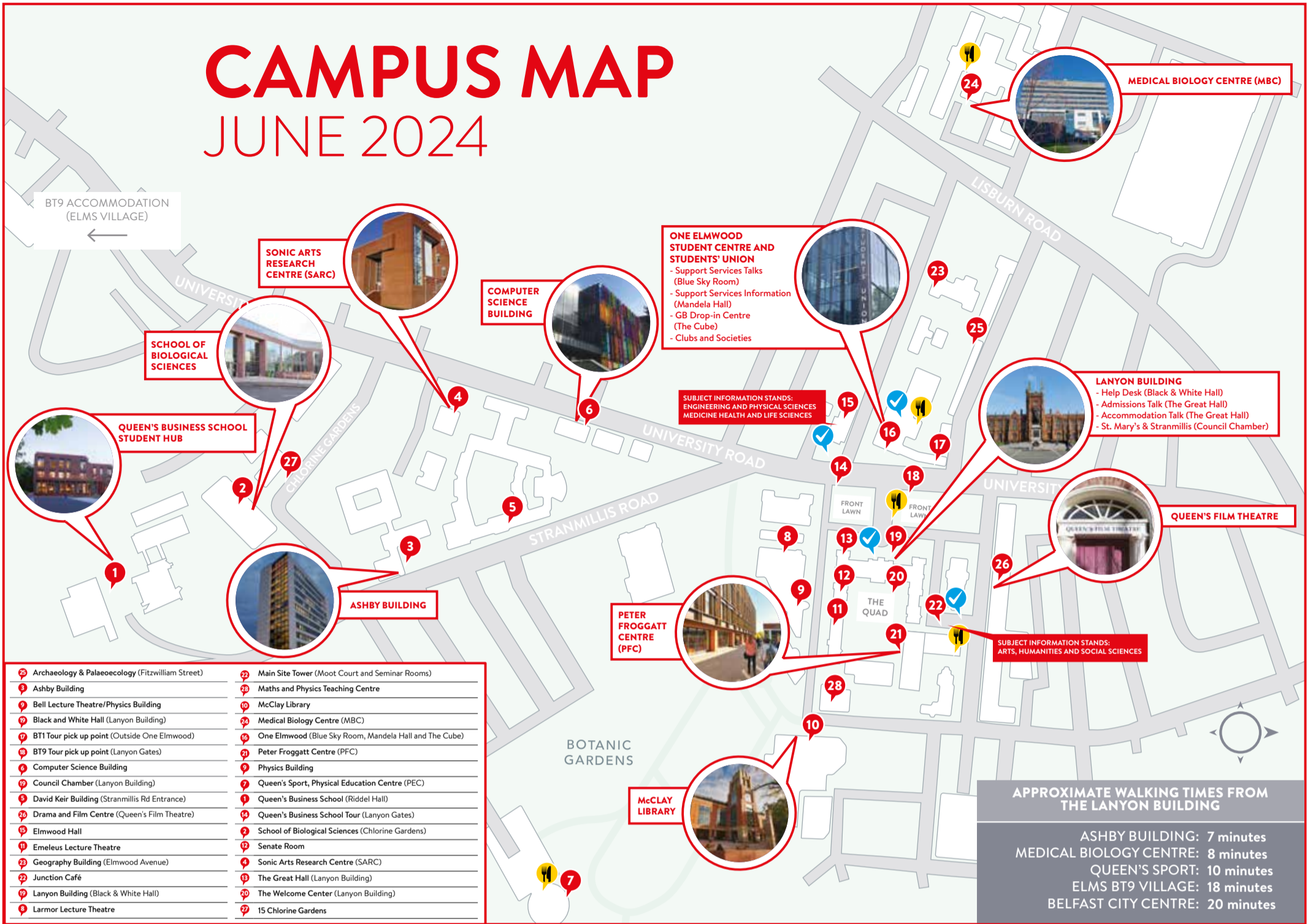
There are various cafés and food outlets located throughout the campus. These all offer a range of tasty snacks and lunch options, available to purchase at very reasonable prices.

- Food Court (outside Lanyon Building)
- Junction Café
- Pick 'n' mix (Junction Café)
- Social Café (One Elmwood)
- The Union Shop (One Elmwood)
- Clements Café (PEC and MBC)
- Donuts (Elmwood Hall)



CAMPUS MAP

JUNE 2024



SUBJECT TALKS All subject talks will last 30 minutes, unless otherwise stated below

- 21 Accounting (Queen's Business School Overview)**
Peter Froggatt Centre, 0G.024
10am, 11am, 12pm (35 mins)
- 21 Actuarial Science and Risk Management (Queen's Business School Overview)**
Peter Froggatt Centre, 0G.024
10am, 11am, 12pm (35 mins)
- 3 Aerospace Engineering and Mechanical Engineering (followed by a tour)**
Ashby Building GM.001
10.00am, 12pm
Tours every half hour from the Ashby Building foyer from 9.30am, last tour 1pm
- 2 Agricultural Technology**
School of Biological Sciences (Chlorine Gardens), Seminar Room
10am
- 21 Anthropology**
Peter Froggatt Centre, 02.025
10.30am, 1pm
- 25 Archaeology and Palaeoecology (followed by a tour)**
Archaeology and Palaeoecology Centre, 42 Fitzwilliam Street Room G43
11.30am, 1.30pm (60 mins)
- 27 Architecture (followed by a tour)**
15 Chlorine Gardens
10am, 12pm
- 4 Audio Engineering**
Sonic Lab, Sonic Arts Research Centre, Malone Road
10am, 11am, 12pm (35 mins)
- 2 Biochemistry**
School of Biological Sciences (Chlorine Gardens), Small Lab
10.15am
- 2 Biological Sciences**
School of Biological Sciences (Chlorine Gardens), Lecture Theatre
9.30am, 12pm
- 24 Biomedical Science and Human Biology**
Medical Biology Centre, 0G.008AST
30 minute interactive lab tour after each talk
10.45am, 1.45pm
- 4 Broadcast Production (followed by a tour)**
Sonic Lab, Sonic Arts Research Centre, Malone Road
11.30am, 12.30pm (60 mins)
- 21 Business Management (Queen's Business School Overview)**
Peter Froggatt Centre, 0G.024
10am, 11am, 12pm (35 mins)
- 5 Chemistry and Chemical Engineering (followed by a demo and tour)**
David Keir Building 0G/110 (Stranmillis Entrance)
10.30am (90 mins)
- 12 Education Studies**
Senate Room
10.30am
- 3 Electrical and Electronic Engineering (followed by robotics demo)**
Ashby Building Sustainable Energy Lab 01.018
11.30am, 1pm (45 mins)
- 5 Civil Engineering (followed by a demo and tour)**
David Keir Building 0G.012 (Stranmillis Entrance)
11am, 1pm
- 6 Computing**
Computer Science Building 02.027
10am, 12pm
Tours throughout the day between 9am and 12.15pm
- 21 Criminology**
Peter Froggatt Centre, 02.026
10.30am, 11.30am
- 24 Dentistry**
Medical Biology Centre, Lecture Theatre 1
12.15pm
- 26 Drama**
Drama and Film Centre (Queen's Film Theatre), Brian Friel Theatre
10.30am, 11.30am
- 21 Economics and Business Economics (Queen's Business School Overview)**
Peter Froggatt Centre, 0G.024
10am, 11am, 12pm (35 mins)
- 12 English**
Emeelus Lecture Theatre
11am, 12pm
- 2 Environmental Management**
School of Biological Sciences (Chlorine Gardens), Small Lab
9.30am
- 26 Film Studies and Production (followed by a taster session)**
Drama and Film Centre (Queen's Film Theatre), 20 University Square, Screen 1
10.30am, 11.30am (60 mins)
- 21 Finance (Queen's Business School Overview)**
Peter Froggatt Centre, 0G.024
10am, 11am, 12pm (35 mins)
- 21 Financial Risk Management (Queen's Business School Overview)**
Peter Froggatt Centre, 0G.024
10am, 11am, 12pm (35 mins)
- 2 Food Science and Nutrition**
School of Biological Sciences (Chlorine Gardens), Lecture Theatre
11am
- 21 French, Spanish and Portuguese**
Peter Froggatt Centre, 02.018
10.30am, 12pm
- 23 Geography (followed by a demo and tour)**
Geography Building 0G.029
10.30am, 12pm (60 mins)
- 8 History**
Larmor Lecture Theatre
10.30am, 1pm
- 21 International Business with a Language (Queen's Business School Overview)**
Peter Froggatt Centre, 0G.024
10am, 11am, 12pm (35 mins)
- 21 Irish**
Peter Froggatt Centre, 02.009
10.30am, 12pm
- 21 Law**
Peter Froggatt Centre, 0G.007
11am, 1pm, 2pm
- 22 Law School -Free Flow access to Moot Court and Seminar Rooms**
Main Site Tower
9.30am - 3pm
- 21 Liberal Arts**
Peter Froggatt Centre, 02.011
11.30am, 1.30pm
- 2 Marine Biology**
School of Biological Sciences, Chlorine Gardens, Lecture Theatre
10am (60 mins)
- 9 Mathematics**
Bell Lecture Theatre
10.30am, 1.30pm (20 mins)
- 24 Medicine**
Medical Biology Centre, Lecture Theatre 1
10am, 11.30am, 1pm
- 2 Microbiology**
School of Biological Sciences (Chlorine Gardens), Lecture Theatre
11.30am
- 4 Music, Music and Audio Production, Music and Sound Design, Music Performance**
Sonic Lab, Sonic Arts Research Centre, Malone Road
10am, 11am, 12pm (35 mins)
- 24 Nursing and Midwifery**
Medical Biology Centre, 0G.046NT
10am, 11.30am, 1pm
- 24 Pharmacy, Pharmaceutical Biotechnology and Pharmaceutical Sciences**
Medical Biology Centre, 0G.008AST
45minute school tour after each talk
10am, 11.30am, 1pm
- 21 Philosophy**
Peter Froggatt Centre, 03.006A
11.30am, 1pm
- 9 Physics (inc Astrophysics)**
Bell Lecture Theatre
10am, 1pm (20 mins)
Experiments throughout the day between 9.30am - 3pm
Maths and Physics Teaching Centre.
- 5 Planning (followed by a tour)**
David Keir Building, 03.010 (Stranmillis Rd Entrance)
12pm, 2pm
- 11 Politics**
Emeelus Lecture Theatre
10am, 1.30pm
- 12 Post-Primary Teaching (PGCE)**
Senate Room
11.30am
- 21 PPE (Politics, Philosophy & Economics)**
Peter Froggatt Centre, 02.018
11am, 1.30pm
- 5 Psychology (followed by a Q&A)**
David Keir Building 0G.115 (Stranmillis Road Entrance)
12pm (75 mins)
- 21 Social Policy**
Peter Froggatt Centre, 02.025
11.30am
- 21 Social Work**
Peter Froggatt Centre, 0G.007
12pm
- 21 Sociology**
Peter Froggatt Centre, 02.026
11am, 12pm
- 19 St Mary's University College**
Council Chamber, Lanyon Building
11am, 1pm
- 19 Stranmillis University College**
Council Chamber, Lanyon Building
12pm, 2pm
- 2 Zoology**
School of Biological Sciences (Chlorine Gardens), Small Lab
11am (45 mins)