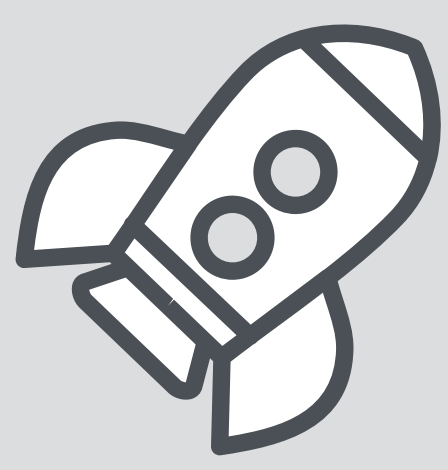




QUEEN'S  
UNIVERSITY  
BELFAST

## ECONOMIC IMPACT



Economic impact of  
**£3.35BN ANNUALLY**  
with a benefit to cost  
ratio of 8 to 1  
(London Economics report)



Research and knowledge  
exchange impact has tripled  
from £595m 2015/16 to  
**£1.5BN IN 2023/24**  
(London Economics report)



Key partners in three Belfast  
Region City Deal projects,  
unlocking a transformational  
**£230M PROGRAMME  
OF INNOVATION**

## INSTITUTIONAL RANKINGS



**RANKED IN THE TOP  
200 GLOBALLY**  
(QS World University Rankings 2026)



**RANKED =8TH  
IN THE UK**  
for career prospects  
after 15 months  
(Complete University Guide 2025)

## RESEARCH QUALITY AND SUBJECTS



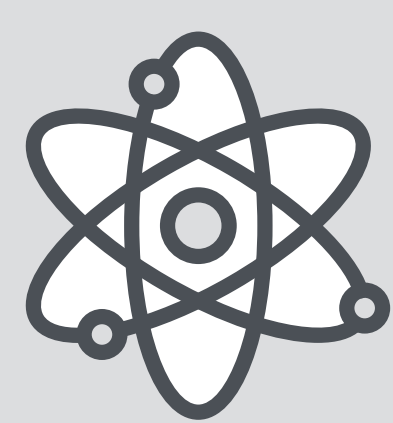
**RANKED 117 IN  
THE WORLD**  
for research quality  
(Times Higher Education World University  
Rankings 2025)



**RANKED 2ND  
IN THE UK**  
for Entrepreneurial Impact  
(i2i University Spinout Ranking 2024)



Research awards valued at  
**OVER £124M**  
with total industry funds  
increasing to over £34m



**99% OF OUR  
RESEARCH**  
environment is world-leading or  
internationally excellent  
(Research Excellence Framework 2021)



**RANKED IN THE TOP  
10 UNIVERSITIES  
IN THE UK**  
for number of spin out companies  
(Royal Academy of Engineering and Beuhurst 2025)



**HOST INDUSTRY-LED  
COMPETENCE CENTRES**  
in agri-food and sustainable energy, a  
state-of-the-art Precision Medicine  
Centre with Invest NI and the  
Belfast Health Trust, and the UK's  
Innovation and Knowledge Centre  
for cyber-security (CSIT)



**PARTNER IN TWO  
WORLD-LEADING  
CO-CENTRES**  
bringing researchers together from across  
the island of Ireland and Great Britain  
to develop solutions to climate change  
and to transform our food systems





**QUEEN'S  
UNIVERSITY  
BELFAST**

## INTERNATIONAL OUTLOOK



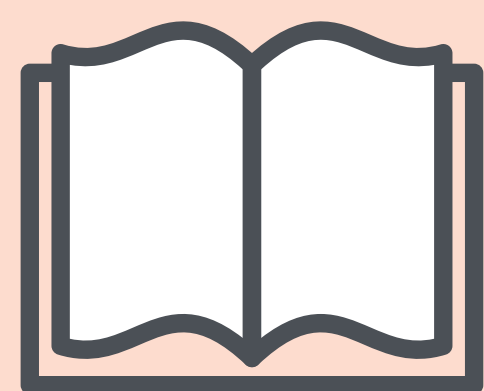
**RANKED 6TH IN  
THE WORLD**

for international outlook

(Times Higher Education World University Rankings 2025)

## WIDENING PARTICIPATION

The Pathway Opportunity Programme has been supporting students since it began in 2017 and has seen nearly 1,500 students pass through its pathways



**34%**

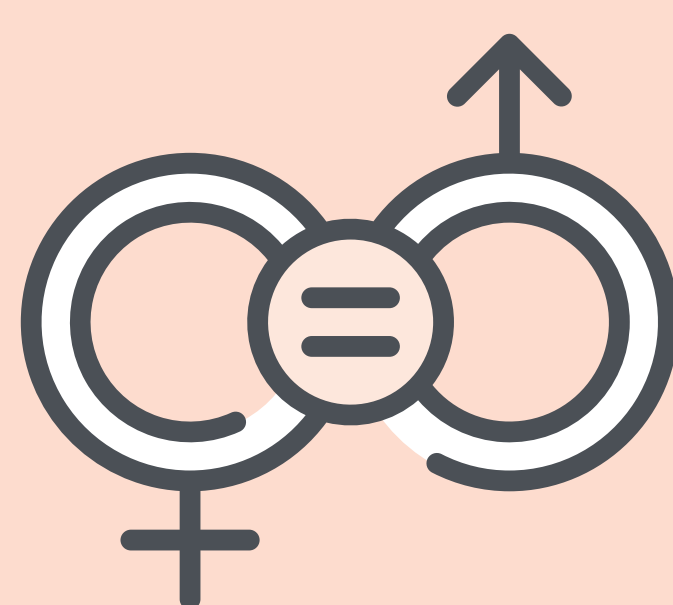
of our first-degree entrants are from lower socio-economic groups, placing Queen's among the leading UK universities for widening access



**£486,750**

of bursaries to students from Widening Participation backgrounds awarded in 2023/24

## GENDER EQUALITY



**FIRST UNIVERSITY IN  
IRELAND**

and only the second in the UK, to earn an Athena Swan Gold Award for our commitment to gender equality

## STUDENT EXPERIENCE



**26 SUBJECTS**

ranked in top 20 in the UK for overall positivity with 18 in the top 10

(National Student Survey 2024)



Queen's Students' Union

**VOTED THE BEST IN THE UK  
BY STUDENTS**

(What Uni? Student Choice Awards 2025)

## CIVIC UNIVERSITY

Queen's Communities and Place (QCAP) partners with communities to co-create solutions to local challenges like health and education inequality, helping secure over £17m in external funding for direct community benefit since 2022.

Formally recognised as a University of Sanctuary in 2025 and on the path to Civic University status.

Partner with key organisations through formal agreements, fostering long-term collaboration with groups including Forward South Partnership, the Greater Shankill Partnership, the Market Development Association, and RCITY to drive impactful community change.