



**QUEEN'S
UNIVERSITY
BELFAST**



WELCOME NUI 
TO QUEEN'S

Start your journey as a Queen's student

WELCOME

On behalf of the university, and as Pro-Vice-Chancellor (Global Engagement), it is my pleasure to welcome you to Queen's University. We are delighted that you have chosen to pursue your academic and personal goals with us, and we look forward to supporting you on your student journey.

We are committed to providing you with a world-class education that prepares you for success in your chosen field, and we are equally committed to fostering an inclusive and welcoming environment for all our students. Our goal is to help you develop the skills and knowledge you need to become global citizens, able to navigate the complexities of our interconnected world with confidence and compassion.

We have created this Welcome Guide to support with everything you need to know before you leave your home country to settle into life at Queen's.

We offer a wide range of programmes and services to support your academic, personal and cultural growth. Our teams are here to assist you with everything from the immigration and visa process, to support in finding accommodation and getting involved in campus activities. We also offer in-sessional English-language support and a variety of events and activities throughout the year.



Once again, welcome to Queen's. We look forward to welcoming you to our campus.



Professor Margaret Topping
Pro-Vice-Chancellor
(Global Engagement)



BEFORE
YOU ARRIVE



KEY CAMPUS INFORMATION

We ensure our students are internationally connected, benefitting from both a multicultural experience on campus and a range of global opportunities with our network of partners. The sports and library facilities we offer has been highly rated by students and our new central campus Student Centre, 'One Elmwood', including a new Students' Union, with over 200 clubs and societies.



IMMIGRATION SUPPORT SERVICE

Before you arrive and while you are studying with us, specialist immigration advice is available from Immigration Support Service team at qub.ac.uk/sites/iss/





17TH IN THE WORLD FOR INTERNATIONAL OUTLOOK

(Times Higher Education World
University Rankings 2022)



TOP 75 UNIVERSITIES IN EUROPE FOR TEACHING EXCELLENCE

(Times Higher Education, 2019)



13 QUEEN'S SUBJECTS WERE IN THE TOP 200 IN THE WORLD

(QS World Rankings by subject 2022)



TOP 200 QUEEN'S IS RANKED 198 IN THE WORLD

(Times Higher Education World
University Rankings 2023)



ACCOMMODATION

Our international students from NUin are staying in lovely accommodation in BT9 for their first term, which means you can be confident you'll be living somewhere safe and comfortable.

Studying at Queen's is a fantastic experience. We can offer you the all-important space to live and enjoy student life to the full.

ELMS BT9

-  Standard and majority (70%) ensuite rooms
-  Residential (modern, comfortable and secure)
-  50 three-storeyed purpose-built blocks; 10-11 bedrooms per floor with shared common room and kitchen
-  Lifestyle options of quiet living, no alcohol and single gender
-  15 minutes walk to campus
-  25 minutes walk to city centre



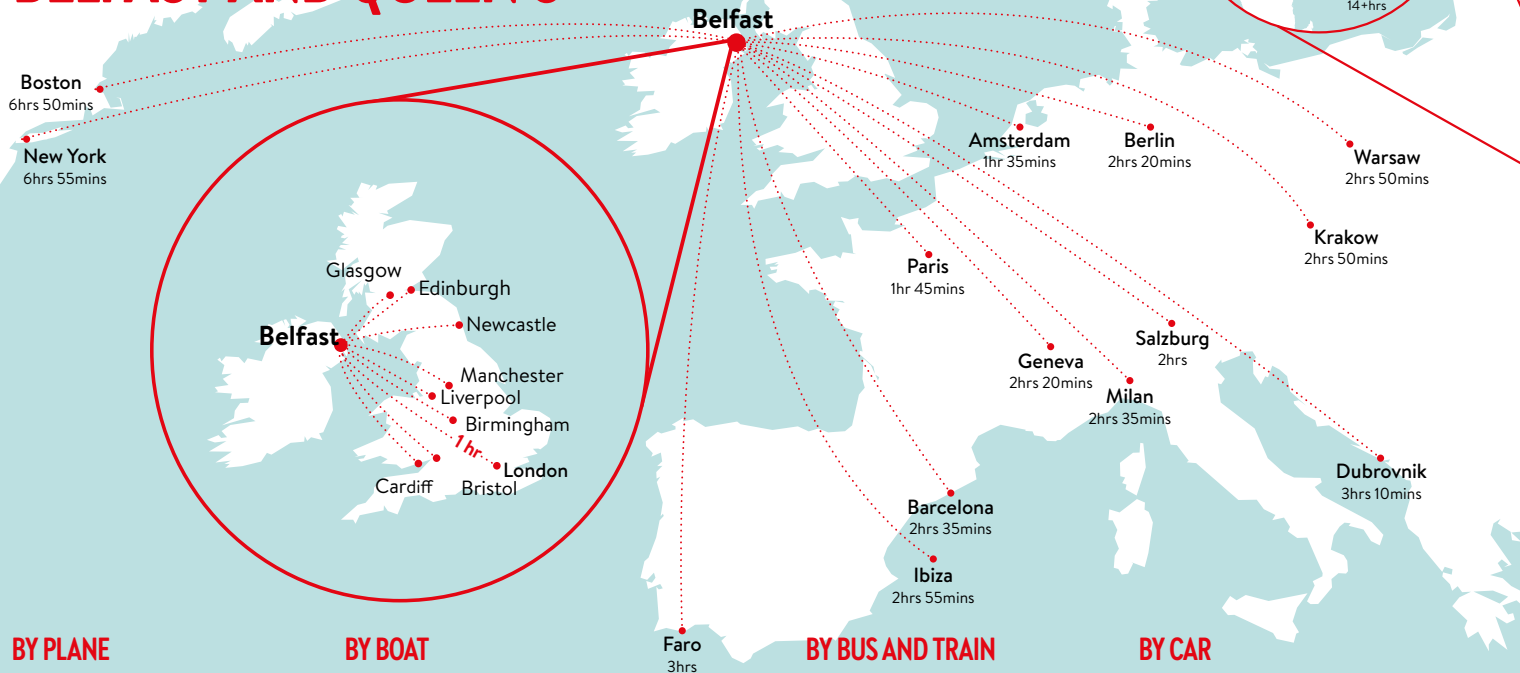


LIVING COSTS

When you study at Queen's, your money goes further. We have the lowest cost of living for students in the UK and affordable accommodation packages mean you can enjoy a better quality of life than in other cities. On a student budget there are lots of free activities, from events and festivals, to city tours, exhibitions and karaoke nights.



GETTING TO BELFAST AND QUEEN'S



BY PLANE

Belfast has two airports, George Best Belfast City Airport, and Belfast International. Flights from Belfast to the rest of the UK take less than an hour, and are reasonably priced*.

BY BOAT

The two main Belfast routes are from Liverpool and Cairnryan. An alternative route runs from Holyhead to Dublin, with excellent motorway connections between there and Belfast.

BY BUS AND TRAIN

Queen's is a five minute walk from Botanic Train Station. A connection to Dublin is just one stop away, via Belfast Central Station. Coach and bus services arrive at Great Victoria Street, which is also connected by rail.

BY CAR

Queen's is located in south central Belfast and as such is close to both Northern Ireland's main motorways, connecting it easily with the rest of Ireland.

*Based on average flight times from 6 major UK cities

PACKING CHECKLIST

DOCUMENT CHECKLIST

- Passport
- Driving License
- CAS statement
- Accommodation confirmation
- Passport-sized photos
(always good to have a few)
- Currency (safer to carry debit/credit cards than cash, but always good to have some cash on hand)
- Academic documents
(e.g. previous results, IELTS)
- Photocopies of documents
(to keep them as backup)

Now that you've got the important bits sorted, here's a packing checklist in case you are cramming everything in your luggage bags.

WHAT TO PACK

- Warm clothes (don't worry if you don't have winter clothes, you will find plenty of shops in Belfast)
- Gadgets (a portable charger is always helpful)
- Universal Adaptor
- Things that remind you of home
 - Family photos
 - Favourite books
- Any prescribed medication for a number of weeks until you have signed up with a GP

DON'T BOTHER WITH

- ✗ Cutlery (it takes up too much space that you can use for something useful instead)
- ✗ Restricted entry products based on UK government regulations
gov.uk/guidance/personal-food-plant-and-animal-product-imports
- ✗ Blankets and Duvets
(student accommodations can provide these)
- ✗ Notebooks and Stationery
- ✗ Toiletries (they weigh a lot and you don't want to exceed the baggage weight limit. You can purchase all you need in Belfast.)

WEATHER ESSENTIALS

Northern Irish weather is more unpredictable than an exam question on exam day, so here are a few things you should plan on carrying with you:



Rain coat



Umbrella

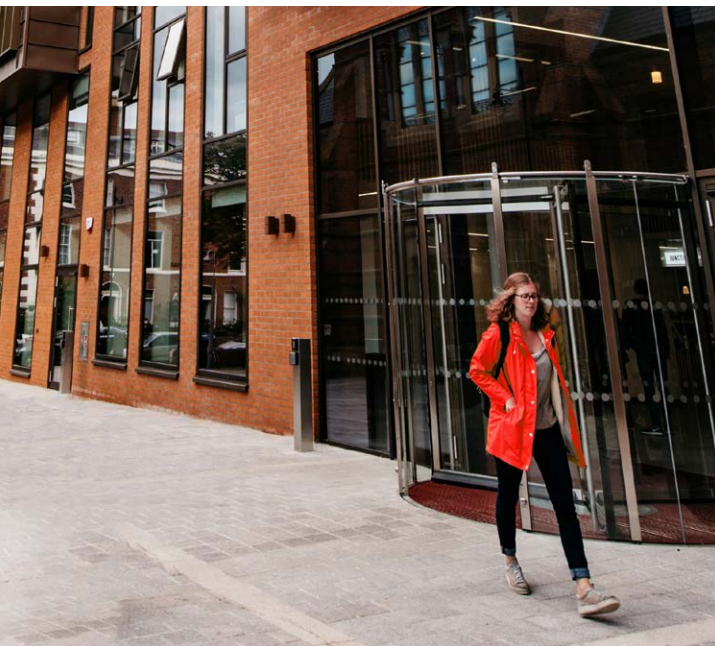


Extra pair of socks



Waterproof backpack

The climate in Belfast is temperate and mild. Temperatures rarely drop below 0°C or rise higher than 24°C with light to medium rain showers.



We decided it would be a good idea to get some real advice from students who have had similar experiences to yours.

IF YOU COULD ADVISE INTERNATIONAL STUDENTS ON ONE THING THEY COULD BRING FROM HOME, WHAT WOULD IT BE?

- **CONFIDENCE**
- **PICTURES OF FAMILY**
- **FAVOURITE BOOK**
- **ANYTHING THAT REMINDS THEM OF HOME**



**WHEN
YOU ARRIVE**



REGISTER WITH THE UNIVERSITY

All students are required to complete online registration at the start of each academic year via the **Qsis Registration Portal**. If you are a **new student** to the University or starting a new course, you will receive a 'Welcome Email' with full instructions from late August onwards. If you are a **returning student**, you will receive an email when the Registration Portal is live. If you have any queries, please email reghelp@qub.ac.uk, or call the Student Helpline on +44 (028) 9097 3223

[qub.ac.uk/directorates/
AcademicStudentAffairs/
StudentServicesSystems/Qsis/](http://qub.ac.uk/directorates/AcademicStudentAffairs/StudentServicesSystems/Qsis/)

AIRPORT MEET AND GREET

To make your arrival as swift as possible, the University has set pick-up days to welcome you and get you settled in. Student Guide will greet you at the airport on the 9th September and bring you to your accommodation at the BT9 student accommodation.

[qub.ac.uk/sites/my-queens/
arriving-in-belfast/](http://qub.ac.uk/sites/my-queens/arriving-in-belfast/)





STUDENT INFORMATION POINT

We have a dedicated team on the Student Information Point who can help you with any queries you may have. You can contact them via:

studentconnect@qub.ac.uk

Having your Student Services based in One Elmwood means you can access everything from one convenient place. Get advice on careers with our dedicated

employability team; access a comprehensive range of free, flexible, and responsive support services from our Student Wellbeing Team, support from the Learning Development Service and the Widening Participation Unit; get financial support, access to disability services and visa and immigration help from the Immigration Support Service.

INFORMATION SERVICES

IT Services is responsible for the University's main computing facilities; this means they will play a big part in your University experience. Visit their website for everything you need to know to get started with IT in Queen's, including what to do next once you have registered, how to obtain your IT username and password, connecting to the Wi-Fi, and getting support for IT:

**[qub.ac.uk/directorates/
InformationServices/Student/](http://qub.ac.uk/directorates/InformationServices/Student/)**

Once you have received your student ID card, you will also have access to the Library.



DISABILITY AND WELLBEING

DISABILITY SERVICES

We understand that students may be experiencing disability in various forms such as mobility, physical or mental health related illnesses. It is essential that everyone feels comfortable and safe as part of the community at Queen's University. If you require any information about disability services available at Queen's and in Belfast, feel free to contact the University.

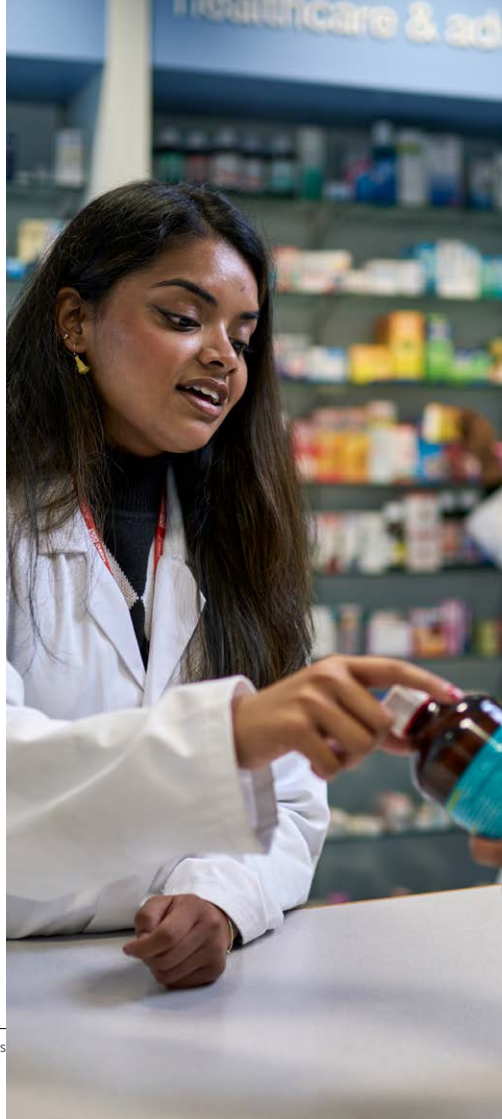
The University has a dedicated team and you can contact them here:

qub.ac.uk/directorates/sgc/disability/studentinformation/register/

STUDENT WELLBEING

You can contact our Student Wellbeing team at any time throughout the academic year. All our support services are free of charge and open to all Queen's students at all levels.

qub.ac.uk/directorates/sgc/wellbeing/



EMERGENCY MEDICAL CARE

In case of a medical emergency, there are several outlets you can choose from depending on the how severe the emergency is.

- Call the police**
- Call an ambulance**
- There are on call doctors you can call for advice or a home visit if needed**

EMERGENCY CONTACTS

Immediate emergency
999

Non-emergency police
101

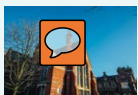
**Royal Victoria Hospital
emergency**
028 9063 2250

GP Out of Hours Service
028 9079 6220

**Elms Village Residential
Life Team**
028 9097 4718



The Lanyon Building



The Graduate School



Riddell Hall



The McClay Library



One Elmwood

FACULTY OFFICES

Art, Humanities and Social Sciences
Engineering and Physical Sciences
Medicine, Health and Life Sciences

SCHOOL OFFICES

Arts, English and Languages
Biological Sciences
Chemistry and Chemical Engineering
Electronics, Electrical Engineering Computer Sciences
History, Anthropology, Philosophy and Politics
Law
Mathematics and Physics
Mechanical and Aerospace Engineering
Medicine, Dentistry and Biomedical Sciences
Natural and Built Environment
Nursing and Midwifery
Pharmacy
Psychology
Queen's Management School
Social Sciences, Education and Social Work

GLOBAL RESEARCH INSTITUTES

The Senator George J Mitchell Institute for Global Peace, Security and Justice
The William J Clinton Leadership Institute
The Institute for Global Food Security

The Institute of Electronics, Communications and Information Technology (Titanic Quarter, not shown)

X1

The Institute of Health Sciences

X2

LOCATION

Academic and Student Affairs
Administration Building
Ashby Building
Canada Room/Council Chamber
Careers, Employability and Skills

M

Centre for Cancer Research and Cell Biology (CCRCB)

J

Chrono Centre

H

Clinical Research Facility

L

Computer Science

R

Counselling Service

B

David Bates Building

D

David Keir Building

Q

Development and Alumni Relations

C

Disability Services

P

Drama and Film Centre at Queen's

S

Dunluce Health Centre

U

Elms BT9

K

Elms BT1 and Elms BT2 (not shown)

Elmwood Building

Elmwood Hall

Estates

Finance

Graduate School

G

Great Hall

T

Harty Room

U

Health Sciences Building

Human Resources

Information Services

Institute of Professional Legal Studies (IPLS) 33

International Office 1

INTO Queen's 32

Jobshop 14

Lanyon Building 1

Main Site Tower 2

Marketing, Recruitment, Communications and Internationalisation 1

McClay Research Centre 24

Medical Biology Centre (MBC) 21

Naughton Gallery at Queen's 1

New Physics Building 8

Northern Ireland Technology Centre (NITC) 30

Occupational Health and Safety Services 34

Old Physics Building 9

One Elmwood 16

Peter Froggatt Centre (PFC) 2

Pharmacy Building 24

Physical Education Centre (PEC) 36

Queen's Film Theatre (QFT) 10

Registrar and Chief Operating Officer 1

Research and Enterprise 17

Riddell Hall 37

Sonic Arts Research Centre (SARC) 29

South Dining Hall 6

Speakeasy Bar 38

Student Centre at One Elmwood 14

Student Plus 1

The McClay Library 11

University Health Centre 13

Vice-Chancellor's Office 1

Welcome Centre 1

Whitla Hall 7

Whitla Medical Building 22

Wellcome-Wolfson Institute for Experimental Medicine 23



SIM CARD

We understand that having access to the internet is a necessity, so here is how you can get your SIM card set up. There are two ways to get you connected:

Pay as you go: This allows you to buy minutes and internet whenever you want. You have more flexibility in choosing your contract and changing it as you like.

Some supplier names to get you started:

EE	shop.ee.co.uk
O2	o2.co.uk
Giffgaff	giffgaff.com
Three	three.co.uk

HOW TO GET AROUND BELFAST



The best thing about the city is that everything is close by, giving you the safety and peace of mind you need. It is easy and affordable to get around Belfast by bus, taxi, train and bicycle.

tiktok.com/@qubelfast/
video/7138430450057497861





BUS

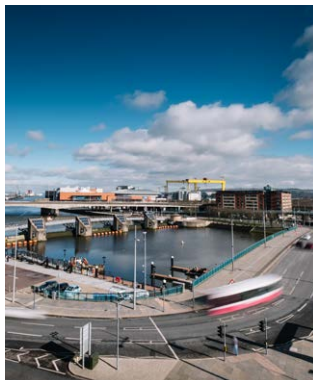
Translink metro bus services have a convenient network operating across the city at all times. If you are living in Queen's accommodation, you will mostly find yourself using '8A, 8B and 8C' as these travel back and forth to the city centre and main campus. You can buy single or day tickets as you step onto the bus. The bus drivers are friendly, so don't hesitate to ask if you are confused about where you are going.

Pro tip: For Translink train and bus timetables, download their app:

translink.co.uk/usingtranslink/ourapps

TRAINS

Botanic Train Station is about 5 minutes' walk from the University, so if you're in the mood for exploring the scenic Northern Ireland coast or taking a day trip to Portrush (a coastal town with a beach), trains are an accessible and inexpensive way of getting around Belfast and Northern Ireland.



TAXIS

Taxis are comparatively more expensive than buses, but save you time if you are in a hurry or if it's late at night, as they operate 24/7. Students mostly use 'FonaCab' and 'Value Cabs'.

Pro tip: You can book and track your ride on the app. So download the app, it also gives you a better idea of maps and your pickup locations.



Value Cabs 028 9080 9080



Fona Cab 028 9033 3333

CYCLING

Cycling keeps you moving and healthy and doesn't cost a thing! Belfast is equipped with cycling lanes, making it safe and convenient for you to travel. You can buy second-hand bikes online or even a brand new one to keep you on the move. Belfast bikes are also a handy way to get moving around the city by renting a bike for a day from over 41 docking stations across the city.

For more information on Belfast Bikes

belfastbikes.co.uk/en/belfast/

WHEN
YOU SETTLE



BUDGET BUYS

As a student you definitely want to save money and make the most of your time here. There are several shops that sell cheaper products:



Household products, makeup essentials, grooming items.



Poundland sells many household, food and grooming items for £1.



B&M Bargains is great for cheap household products.



Compared to Tesco and Asda, Lidl is cheaper. Perfect if you want to save on your weekly grocery shop!



Gumtree is an online outlet where you can buy second hand items for a lot cheaper than buying brand new items. You do have to be careful about who you are buying from and don't forget to check the item thoroughly before you buy it.

GROCERY STORES

If you are missing homemade food or fancy a change in cuisine, Belfast caters for all tastes and budgets. Here is a list of grocery stores close to Queen's campus, where you can find a range of products and also places that will deliver food straight to your accommodation, should you need it. Or why not save yourself money with a fakeaway!

bbc.co.uk/food/collections/fakeaway_recipes

ubereats.com/gb/location/belfast

Asia Supermarket

Korean, Chinese, South Asian
40 Ormeau Embankment,
Belfast BT6 8FZ

St George's Market

Organic, Irish
12-20 East Bridge Street,
Belfast BT1 3NQ
(On the weekends)

Makkah Market

Halal and Arabic
41 Bradbury Place,
Belfast BT7 1RR

Spice World

South Asian, local produce
35 Donegall Pass,
Belfast BT7 1DQ

Istanbul Market

Turkish and Halal
1 Botanic Avenue,
Belfast BT7 1JG



USEFUL CONTACTS

qub.ac.uk/sites/Students/



@QUBelfast



Queen's University Belfast

#LoveQUB

PRE-SEMESTER WELCOME PROGRAMME

This programme is designed to introduce international students to Belfast and adjust to life in Queen's. This course runs at the start of each academic semester and details can be found here:

qub.ac.uk/sites/my-queens/pre-semester-engagement/

**INSERT NUIN
SPECIFIC
PROGRAMME**

TERM DATES



[qub.ac.uk/about/
Semester-dates/](http://qub.ac.uk/about/Semester-dates/)



Students are encouraged to participate in as many events as possible to help them settle in and meet new friends while finding out useful information for their time at Queen's.



THE STUDENT'S UNION

THE HEART OF CAMPUS

Welcome to the Students' Union! We are here to help you get the most out of your time at Queen's. We provide you with vital support, opportunities to socialise and different activities to help you make friends and develop your skillset alongside your studies.

The new state of the art Students' Union is a vibrant social hub with a revamped gig venue - Mandela Hall, the Union Bar, the Union Shop, Outdoor terraces, multiple hang out spaces and tech friendly study spaces right where you want them.

In the SU you also will find:

- **Student Officers** – the team is here to help you, represent you, organise campaigns to make the changes you want and lead the Union on your behalf
- **SU Advice** – provides students with free, independent, confidential, and non-judgemental advice

- **SU Enterprise** – Whatever your degree pathway, SU Enterprise help you develop creative thinking, generate ideas, and improve your entrepreneurial skills
- **SU Voice** – Stand up for what you believe in with SU Voice!
- **SU Volunteer** – Why not join the 5,000 students who are involved in volunteering at Queen's every year?
- **SU Lounge** – hang out, play pool and make yourself a cuppa on us.
- **SU Clubs & Societies**
- **SU Sexual Health Clinic**
- **Union Bar & Terrace**
- **Union Shop**
- **Mandela Hall**
- **SU Rooftop Garden**



QUEEN'S
STUDENTS'
UNION



SU CLUBS AND SOCIETIES

There are so many reasons to get involved in Clubs and Societies whilst at Queen's but many students find it's a great way to make friends and meet like-minded people. Many courses have related societies, but they do much more than discuss what happened in your latest lecture - they give you a little bit more from life at

Queen's: more fun; more time to be part of something; more time to find out about you. Academic societies can also help enhance your studies and your career opportunities in the process.

Not sure what to go for? Check out our A-Z list:

q-su.org/ClubsSocieties/



@queensstudentsunion



@QueensSU_



@yourQUBSU

STUDENT BLOGS

Queen's University encourages students to interact with those around them and get the best out of their experience, which is what student bloggers do best. These students write about various topics, so don't forget to look through these blogs in case something may catch your attention!

qub.ac.uk/Yourstudentguide/



ENGLISH LANGUAGE SUPPORT



Students for whom English is not their first language are able to participate in a range of free English language programmes for academic purposes. You can find out further information here:

qub.ac.uk/International/International-students/Applying/English-language-requirements/in-session-english/

STUDENT CARD PERKS

Once you've got your student card, you can use it around campus for things like:

- Access to the library. You can use it for printing in the library
- Access to Queen's Physical Education Centre (PEC)
- You can use it to purchase from on-campus shops and cafés



HOW TO TOP UP YOUR STUDENT CARD?

You can top up your student card online via Queen's Online or you can pop into the library, find one of the copy rooms and use the top up machines there.



THE SLANG GUIDE

You may find yourself hearing frequently used words, without knowing what they mean! So, here is a list to help you make sense of it all!

"WHAT'S THE CRAIC?"

What's happening? What's up?

"CHIPS"

Fries

"CRISPS"

Potato chips

"EEJIT"

Silly person

"HOOVER"

Vacuum cleaner

"QUID"

1 pound

"FIVER"

5 pounds

"BANTER"

Playful chat

"DEAD ON"

Okay

"GRAND"

Great

"DANDER"

Walk

"WEE"

Little

"WEE-BUNS"

Easy

"TENNER"

10 pounds

Watch for more:

qub.ac.uk/student-blog/vlogs/VIDEOGuidetoNorthernIrishSlang-1.html





For further information:

Queen's University Belfast
University Road, Belfast,
BT7 1NN Northern Ireland

T: +44 (0) 28 9024 5133
(during business hours)

T: +44 (0) 28 9097 5099
(outside business hours)

qub.ac.uk



**QUEEN'S
UNIVERSITY
BELFAST**