

A woman with long brown hair, wearing a teal top and a watch, holds a large green leaf in front of her face. The background is a soft-focus bokeh of green and yellow light spots, suggesting an outdoor setting with trees. The text is overlaid on the left side of the image.

Sustainability at Queen's University Belfast

Queen's Sustainability Team



WASTE



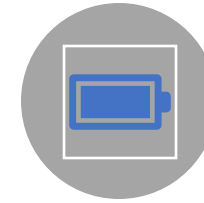
TRAVEL



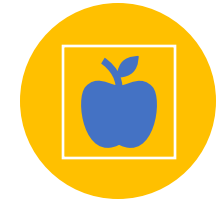
ENGAGEMENT



SUSTAINABLE
CONSTRUCTION



ENERGY AND
WATER



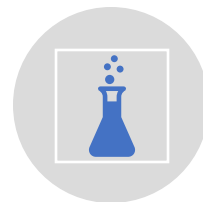
PROCUREMENT



BIODIVERSITY



NET ZERO



RESEARCH



EDUCATION



DIVESTMENT

What does Sustainability mean to you?




Menti.com

Code: 5863 5778



Join at menti.com | use code 6485 5626

 Mentimeter

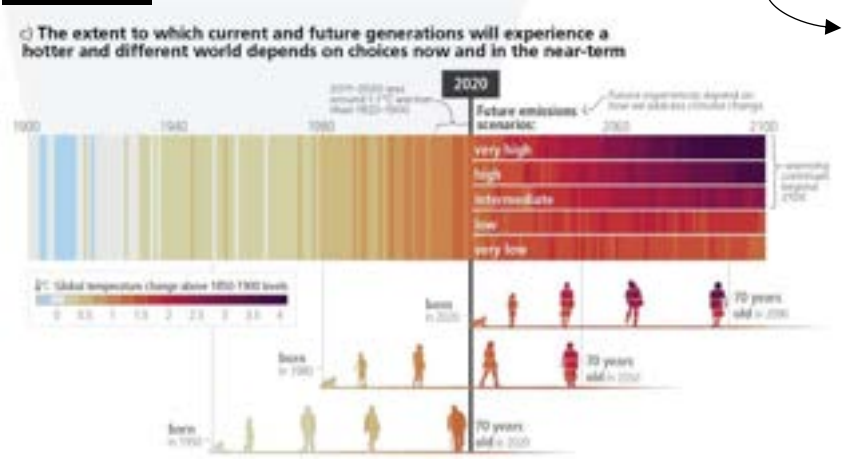
What does Sustainability mean to you?

Waiting for responses ...



The Sustainability Story

1990



1992



2018



2022



2020



2019



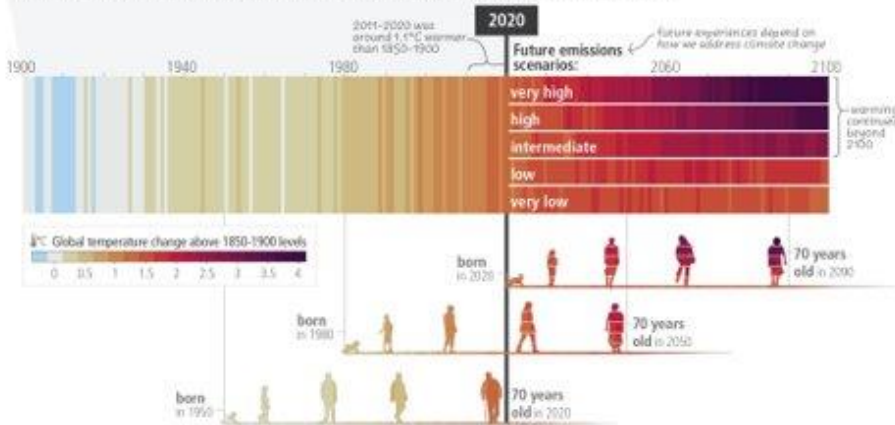


Do you think Queen's
should be acting to reduce
their impact?

Why should we care?

The Science

○ The extent to which current and future generations will experience a hotter and different world depends on choices now and in the near-term



Government Targets



Our Community

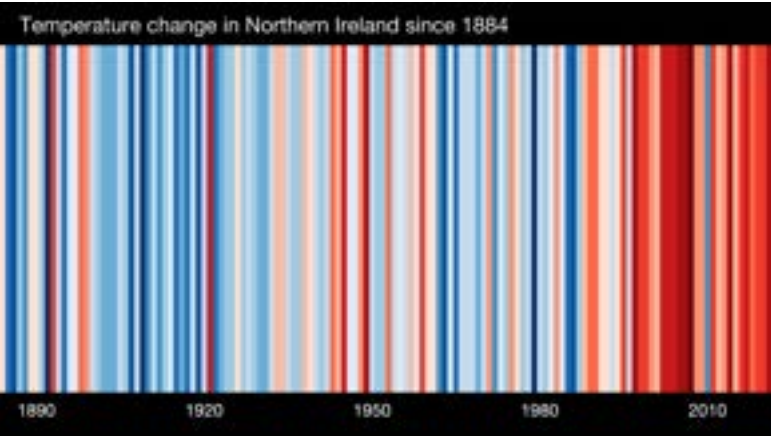


'90.33% of survey participants are either extremely worried, very worried or somewhat worried about climate change'.

'90% agreed strongly or agreed that Queen's should play a leading role in tackling climate change by reducing its own carbon footprint'.

Concerns within our Community...

Environmental



Societal

BLOGS

The climate crisis is a health crisis

World Health Day 2022 is dedicated to keeping both humans and the planet healthy, with the goal of creating a movement to organize societies focused on well-being. Two years after the World Health Organization (WHO) declared COVID-19 a Public Health Emergency, governments worldwide still fail to see that the pandemic is but a first symptom of a world running out of breath.

MPs say fast fashion brands inaction on ethics is shocking



Fashion retailers JD Sports, Sports Direct and Debenhams, are 'failing to commit' to reducing their environmental and social impact, MPs say. Amazon, The Mace and H&M were also described by the Environmental Audit Committee (EAC) as being among the 'least engaged' in sustainable fashion and labour market initiatives.

Economic



Use of food banks in Northern Ireland hits all-time high, according to research

17 April 2022



Students need to find an extra £439 a month to cope with rising costs



Our Impact

Net Zero Baseline: 105,000 tCO₂
(2018-19)

The image shows two young women walking on a paved path. The woman on the left has long dark hair, wears sunglasses, a white top, a patterned scarf, and blue jeans. The woman on the right has blonde hair, wears glasses, a white patterned short-sleeved shirt, and dark trousers. They are both smiling. In the background, there is a black wrought-iron fence on the left, lush green trees, and a stone building. A silver car with license plate 'LJZ 2962' is partially visible on the right. A large red L-shaped graphic is positioned on the left side of the image, partially overlapping the text.

A NET ZERO UNIVERSITY

What are we doing? Net Zero by 2040

Queen's University Net Zero Journey

What have Queen's done to date?



Almost £10 million invested in carbon reduction projects



20% increase in cycling parking provision



21% reduction of carbon emissions
At an institutional level



>50% low carbon energy
(Electricity consumed, generated using low carbon technology)



31 Labs have LEAF accreditation



81 Projects Funded via Green Fund



94% waste diverted from landfill



On Campus Energy
We generate heat and electricity on campus and use renewable energy for all electricity from the National Grid.



Cycle Friendly Campus
We've received a Gold award from Cycling UK



Green Flag Campus
Awarded a Green Flag Award for high quality public green space on our Lanyon site.



5 'No Mow' Areas within the Campus



Over 500 visits to the Bike Hub



What can you do as an individual?

Sustainable Travel

yLink Card

- Free
- 16-23 year olds
- Range of discounts – including up to a third off bus and travel rail

24+ Student Railcard

- Same benefits as the yLink card

To Apply: <https://www.translink.co.uk/ylink>

mLink App

- Purchase bus and train tickets
- Three-day, weekly, monthly tickets - discounted



Waste – Refuse, Reduce, Reuse...

...and then Recycle



Recycling around campus:

- Plastic
- Metal
- General Waste
- Battery



Recycling in Accommodation:

- Plastic
- Metal
- Glass
- General Waste
- Food Waste

The Big Give Clear Out





How can you get involved?





QUEEN'S UNIVERSITY BELFAST

KEEP NORTHERN IRELAND BEAUTIFUL

THERE IS NO PLANET B

GREEN NEW DEAL

Certified Carbon Literacy Training

For more info:
<http://go.qub.ac.uk/CLTCourses>



Join the 'Student Sustainability Network'

