




Delivering real-world impact and societal change



Welcome

- Introductions
- Overview of IAAs at Queen's
- Current Funding Opportunities
- Further Information
- Q&A Session



What is an Impact Acceleration Account?

Impact can be defined as 'the demonstrable contribution that excellent research makes to society and the economy'. (UKRI)

- Awarded by RCs
- Competitive process
- Block grant
- Flexible pot of funding
- Aligns with institutional priorities
- Increases impact of research
- Builds skills for impact activity
- Builds capacity for KE



Website: go.qub.ac.uk/queens-iaas



**QUEEN'S
UNIVERSITY
BELFAST**

QUB IAAs



**Almost £3M
awarded 2022 for
AHRC, BBSRC, EPSRC
and MRC**



**Economic
and Social
Research Council**

**ESRC - £1, 050, 000
2019-23**



**Arts and
Humanities
Research Council**

**AHRC - £457, 329
2022-25**



**Engineering and
Physical Sciences
Research Council**

**EPSRC - £942, 000
2022-25**



**Biotechnology and
Biological Sciences
Research Council**

**BBSRC - £300, 000
2022-25**



**Medical
Research
Council**

**MRC - £1, 117, 800
2022-25**



What do we do with IAAs?

Funder specific, but typically:

- Inward/outward secondments
- Enterprise Fellowships
- Pilot impact activities with partner organisations
- Entrepreneurs-in-residence
- Medical translational research (CiC)
- Impact training
- Academic Industry Meeting (AIM) Days
- Public Engagement activity

IAAS AT QUEEN'S

Choose the IAA that relates to your research interests to find out how to apply.



AHRC IAA

[Click here for the AHRC IAA at Queen's.](#)



BBSRC IAA

[Click here for the BBSRC IAA at Queen's.](#)



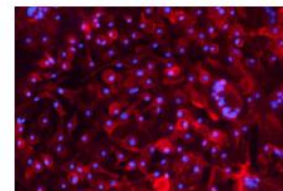
EPSRC IAA

[Click here for the EPSRC IAA at Queen's.](#)



ESRC IAA

[Click here for the ESRC IAA at Queen's.](#)



MRC IAA

[Click here for the MRC IAA at Queen's.](#)



STFC IAA

[Click here to contact the STFC IAA contact at Queen's.](#)



Guidelines

[Click here for some general guidelines on applying to an IAA.](#)



Get in touch

[Contact us to find out more.](#)

AHRC IAA

Call Opens 3 October 2022 and Closes Thursday 17 November



Leading Impact Fund enables researchers to carry out longer-term pieces of work to accelerate the impact of their research and give them a clearer understanding of the impact potential of their research. Max award £10k

Placing People Short-term, flexible people exchanges between external partners and researchers can provide significant opportunities to share skills and knowledge and to develop longer-term working relationships. Two types of placements are available:

i) **Fellowships** will enable QUB researchers to apply and validate their research by focusing on related challenges within an external setting in order to accelerate delivery of research impact. The secondments will last a maximum of six months on a flexible, part-time basis. Max award £5k

ii) **Practitioner Appointments** will allow staff from external organisations to spend time with researchers or teams of researchers within the University. Max award £5k

Building Partnerships will help academics build partnerships with organisations with whom they have not previously worked or with whom they only have a tentative relationship. Max award £3k

Commercialising Arts, Cultural and Humanities Enterprises (CACHE) will allow researchers to carry out early-stage commercialisation activities needed to realise the commercial potential of A&H research. Max award £10k

For more information visit our [website](#) or email iaa@qub.ac.uk



BBSRC IAA

Call Opens 3 October 2022 and Closes Thursday 17 November

Funding available to support existing QUB biotechnology and biological science research

- **THEME 1 Impact through Commercialisation: *Commercial Push Fund***
 - early-stage commercialisation activities to realise potential for commercialisation; no industry partner but external validation; 3 months funding for an individual /team, validate a business model; max award £10k;
- **THEME 2 Impact through Awareness: *Impact Action Fund***
 - dissemination and awareness building through stakeholder engagement events; media/press engagement; workshops etc. Std award max £2k (but up to £5k possible);
- **THEME 3 Impact through Partnership:**
 - ***Relationships Incubator Fund***
 - i. ***Scoping projects:*** based on **existing** research –“fast fail”/pilot projects for translation OR data generation along with industry partner; match funding expected; cannot be used for primary research. Max award £15k;
 - ii. ***Partnership projects:*** travel awards to share research outcomes with partners, bring partners to Belfast. Max award £5k
 - ***Visiting Fellowship Fund*** funds researcher mobility and flexible people exchanges, KE and development of long term relationships (outgoing/incoming). Max 2 weeks, max award £5k.

INVENTION DISCLOSURE FORMS: consider before engaging with external partner. Contact Commercial Development f.cosgrove@qub.ac.uk; M.Wilson@qub.ac.uk

For more information visit our [website](#) or email iaa@qub.ac.uk

EPSRC IAA

Call Opens 3 October 2022 and Closes Thursday 17 November

Impact – Commercialisation – External Engagement

1. Secondments (8 weeks – 4 months)
 - I. Inward – up to £7,500
 - II. Outward – up to £25,000
2. Collaboration Catalyst (up to 6 months)
Up to £10,000
3. Demonstration of Commercial Principle (up to 3 months)
Up to £10,000
4. Enterprise Fellowship (up to 6 months)
Up to £25,000
5. Non-Commercial Impact (up to 6 months)
Up to £10,000

For more information visit our [website](#) or email
j.grieve@qub.ac.uk



- Could the project contribute to a future **Impact Case Study** for REF?
- “Impact” is **Broad**
- Potential **Reach**
- **Significance** of Impact to Beneficiaries

MRC CiC Pump Priming Fund

Call opens 10 October and closes 31 October



- Fund aimed at MHLS researchers to **pump prime projects** with significant potential to deliver translational & economic impact
- **Max award £10k** (must be spent by March 2023) to support:
 - Development of early stage ideas or additional data to support idea validation
 - Experimentation to strengthen translational potential and IP
 - Initial Investigations which could lead to MRC funding or economic benefit
 - Activities to address gaps identified by potential industry partners
 - Development of prototype
 - Sufficient data to strengthen case for internal [MRC IAA award](#). **Launch early 2023**
- [Invention Disclosure Form \(IDF\)](#) required
- **Contact Commercial Development** f.cosgrove@qub.ac.uk; M.Wilson@qub.ac.uk
- For more information and to apply visit the [website](#)

MRC IAA

Call launch scheduled for early 2023



The QUB MRC IAA will support the following activities:

QUB Confidence in Concept Scheme (QUB-CIC):

- Max award £75K
- Translational specific funding - projects translated into new therapies, diagnostics and medical devices
- CiC Pump Priming Funding recommended
- Invention Disclosure Form must be submitted 3 weeks prior to application
- Project duration one year
- Training and development for award holders

Enterprise Fellowships (EF):

- Max award £20K
- Aimed at ECR engagement with industry
- Funding to facilitate knowledge transfer, commercial activities, enhance business awareness/engagement, seed longer term collaboration and enrich career development
- Industry/in-kind commitment expected
- Max duration 6 months

AIM Days and Innovation Training Programmes

For more information visit our [website](#) or email iaa@qub.ac.uk



For further information

Visit go.qub.ac.uk/queens-iaas

If you would like to discuss a proposal prior to submission please contact the following:

- To discuss the [AHRC IAA](#), contact Kevin Fearon or Lynne Gault - iaa@qub.ac.uk (**Please include AHRC IAA in subject line**)
- To discuss the [BBSRC IAA](#), contact Ann McMahon or Lynne Gault - iaa@qub.ac.uk (**Please include BBSRC IAA in subject line**)
- To discuss the [EPSRC IAA](#), contact Joan Grieve - j.grieve@qub.ac.uk
- To discuss the [MRC CiC Pump Priming Fund](#) contact Matthew Wilson m.wilson@qub.ac.uk or Feargal Cosgrove f.cosgrove@qub.ac.uk
- To discuss the [MRC IAA](#), contact Maeve Murphy, Matthew Wilson or Lynne Gault - iaa@qub.ac.uk (**Please include MRC IAA in subject line**)
- To discuss cross-IAA applications, contact iaa@qub.ac.uk