



**QUEEN'S  
UNIVERSITY  
BELFAST**

**SOCIAL SCIENCES,  
EDUCATION AND  
SOCIAL WORK  
UNDERGRADUATE  
PROGRAMMES  
2024 ENTRY**

**MAKING A SOCIAL  
DIFFERENCE**

**RUSSELL  
GROUP**

# WELCOME

The School of Social Sciences, Education and Social Work is a vibrant community of academics with a diverse range of interdisciplinary skills and expertise but sharing a single core vision: to produce world-leading research and first-class teaching which expands the frontiers of knowledge and understanding, informs policy and practice and makes a social difference locally, regionally and globally. Our vision is underpinned by a commitment to the principles of excellence, transparency and inclusiveness and the creation of an academic environment in which all staff and students feel valued and possess a shared sense of ownership and commitment to what the School seeks to achieve.

Professor Daniel Muijs  
Head of School of Social Sciences, Education and Social Work



**QUEEN'S IS A MEMBER  
OF THE RUSSELL  
GROUP OF THE  
UK'S 24 LEADING  
RESEARCH-INTENSIVE  
UNIVERSITIES**



**THREE OF OUR SCHOOL  
SUBJECTS ARE RANKED  
TOP 20 IN THE UK:**

**SOCIAL WORK IS  
RANKED 2ND IN THE UK**

(TIMES AND SUNDAY TIMES GOOD  
UNIVERSITY GUIDE 2023)

**11TH IN THE UK**

(TIMES AND SUNDAY TIMES GOOD  
UNIVERSITY GUIDE 2023)

**CRIMINOLOGY IS  
RANKED 15TH IN THE UK**

(TIMES AND SUNDAY TIMES GOOD  
UNIVERSITY GUIDE 2023)

**OVER 99% OF  
QUEEN'S RESEARCH  
ENVIRONMENT  
WAS ASSESSED AS  
WORLD-CLASS OR  
INTERNATIONAL  
EXCELLENT**

(RESEARCH EXCELLENCE  
FRAMEWORK 2021)



# CRIMINOLOGY

The BA (Hons) Criminology provides a unique vantage point to study crime and justice in a society transitioning from conflict. Criminologists are interested in how activities come to be defined as ‘criminal’, and why definitions and responses to crime vary over time and place. The subject includes a broad range of perspectives on understanding crime and criminal behaviour and examines various methods in the prevention, policing and punishment of crime. The course also considers how and why people move away from crime, ways in which this might be facilitated and offender reintegration.

## COURSE CONTENT

### Stage 1

Modules often draw on international comparisons with a strong Irish (North and South) emphasis.

Compulsory modules

- Introducing Criminology
- Crime and Society

Optional modules

- Introducing Social Policy
- Visualising the Social World
- Rethinking Society
- The Sociological Imagination
- Comparative Politics
- Issues in Contemporary Politics
- Themes and Issues in Social Policy
- Digital Society

### Stage 2

Compulsory modules

- Criminological Theory
- Policing and Society
- Qualitative Research Skills
- Quantitative Research Skills

Optional modules

- Crime and the Media
- Theory Counts
- Exploring harm and victimisation

### Stage 3

Compulsory modules

- Punishment, Penal Policy and Prisons
- Research Project and Dissertation
- Youth, Crime and Criminal Justice
- Criminology Beyond Borders

Optional modules

- Psychological Perspectives on Crime
- Reintegration after Prison
- Modelling the Social World
- Social Identity: Difference and Inequalities
- The Sociology of Protest and Revolution
- The Cultural Politics of Memory from a Global Perspective

### Optional Quantitative Methods Exit Pathway

Students who wish to benefit from specialist training in quantitative research can undertake a series of dedicated social science research modules over the course of their degree studies. Successful completion of 80 CATS credits of advanced quantitative research training (four modules) in stages 2 and 3 will receive the enhancement of BSc ‘with Quantitative Methods’ added to the name of the degree awarded.

## WHY QUEEN’S?

### Internationally Renowned Experts

As part of international expertise and profile of the criminology academics at Queen’s University Belfast, you will get a range of opportunities to engage with ‘real-world’ stakeholders in the criminal justice and voluntary/community sector world. These will include expert inputs, field trips and engagements with a range of actors and organisations with whom many of our academics work with as part of their wider research. In addition, students will also become part of the vibrant research community at Queen’s University Belfast, with opportunities throughout their time at Queen’s to attend

## BA Single Honours

- Criminology 3 yrs (M900)
- Criminology and Social Policy 3 yrs (ML94)
- Criminology and Sociology 3 yrs (ML93)

## Entrance Requirements

A-level:  
ABB

All applicants:

There are no specific subject requirements to study Criminology:

For students whose first language is not English

An IELTS score of 6.5 with a minimum of 5.5 in each test component or an equivalent acceptable qualification, details of which are available at: [go.qub.ac.uk/EnglishLanguageReqs](http://go.qub.ac.uk/EnglishLanguageReqs)

FIND  
OUT  
MORE:



criminology talks, events and guest speaker sessions to broaden their knowledge and understanding of the criminological field.

## Prizes

The highest achieving students are regularly awarded prizes and scholarships, such as the SWAN prizes for best pieces of work on gender, the Lockheed Prize and the Foundation Scholarships.

## Study Abroad

Students can spend time studying in one of our linked universities in Europe. There are other opportunities to study or work abroad, supported by schemes such as the Turing scheme, Erasmus and Study USA.

## Facilities

The School has state-of-the-art teaching and learning facilities, together with dedicated student space including a large student common room. The teaching facilities enable an interactive learning environment.

## CAREERS/FURTHER STUDY

The diversity of interests and topics covered in the discipline, plus the wide range of skills it equips students with, means that our students enter a wide range of careers on graduation. Public and private sector organisations involved in the criminal justice system continue to expand and the demand for criminology graduates is strong. The number and variety of career opportunities related to the criminal justice system has increased in recent years.

Criminology graduates can work in the traditional criminal justice agencies such as the police, crime prevention and early intervention programmes, as well as the prison service, criminology graduates work in a range of occupations, including the media, Civil

Service, research, teaching, business, voluntary community organisations, as well as private industry. Additionally, criminology graduates often work in victim support organisations, with vulnerable at risk groups and in other social care agencies. Some graduates build on the degree by undertaking further postgraduate training in fields, such as policing, probation work, social work, law, human rights, social science research and teaching. The School has a strong postgraduate programme, offering both Master’s and PhD degrees.

Studying for a Criminology degree at Queen’s will assist students in developing the core skills and employment-related experiences that are valued by employers, professional organisations and academic institutions. Graduates from this degree at Queen’s are well regarded by many employers (local, national and international) and over half of all graduate jobs are now open to graduates of any discipline.

Typical career destinations of graduates include:

- Victim Support Worker
- Crime Analyst
- Working with people in conflict with the law (e.g. offender management, rehabilitation, etc.)
- Researcher
- Civil Servant (e.g. Police Officer, Prison Officer, etc.)
- Policy Analyst (e.g. working to shape criminal justice policy and practice)
- Charity Worker (e.g. working with the families of victims and/or offenders)
- Youth and Community Worker

Graduate employers include:

- Northern Ireland Civil Service
- Northern Ireland Housing Executive
- National Health Service
- Northern Ireland Statistics and Research Agency
- PwC
- Ulster Bank
- Santander
- Belfast City Council
- Ipsos MORI
- Commission for Victims and Survivors NI



“I loved my time at Queen’s, I would do it all over again if I could. My Criminology degree was literally the most interesting thing I have ever done. I learned so much about crime, in Northern Ireland especially, because I am English so I didn’t know about it to start with. Third year I loved how you get to choose what you want to learn more about and what you want to go into further depth.”

Ashleigh Brown  
BA Single Honours  
Criminology graduate



CRIMINOLOGY AT QUEEN’S IS  
RANKED 15TH IN THE UK  
(Times and Sunday Times Good  
University Guide 2023)

# CRIMINOLOGY AND SOCIAL POLICY

Criminology focuses on the causes and consequences of crime, as well as how the criminal justice system responds to crime. Criminologists are interested in how activities come to be defined as criminal, and why definitions of crime vary across countries and over time. The subject includes a wide range of social and psychological theories that attempt to explain criminal behaviour and the effective operation of the criminal justice system.

Social Policy students learn how to tackle major policy problems. They do this by applying core concepts from social science to intractable social problems such as gender inequality, eldercare, children's rights and climate change. There is strong crossover between criminology and social policy as many of the people who end up within the criminal justice system have experienced poverty, inequality or discrimination. As an applied and critical social science, you will gain knowledge and understanding of contemporary government policies, their impacts, and consider how we can achieve improvements.

## COURSE CONTENT

### Stage 1

Courses often draw on international comparisons with a strong Irish (North and South) emphasis.

#### Compulsory modules

- Introducing Criminology
- Introducing Social Policy
- Crime and Society
- Themes and Issues in Social Policy

#### Optional modules

- Rethinking Society
- The Sociological Imagination
- Digital Society
- Visualising the Social World

### Stage 2

- Criminological Theory
- Policing and Society
- Welfare in Theory and Practice
- Qualitative Research Skills
- Quantitative Research Skills
- Questions for an Ageing World
- Theory Counts

### Stage 3

#### Compulsory modules

- Disability and Society
- Punishment, Penal Policy and Prisons
- Youth, Crime and Criminal Justice
- Policy Briefing Paper

#### Optional modules

- Modelling the Social World
- Gender, Family and Social Policy: Comparative Perspective
- Psychological Perspectives on Crime
- Social Identity: Difference and Inequalities
- Criminology Beyond Borders
- The Sociology of Protest and Revolution
- The Cultural Politics of Memory from a Global Perspective

#### Optional Quantitative Methods Exit Pathway

Students who wish to benefit from specialist training in quantitative research can undertake a series of dedicated social science research modules over the course of their degree studies. Successful completion of 80 CATS credits of advanced quantitative research training (four modules) in stages 2 and 3 will receive the enhancement of BSc 'with Quantitative Methods' added to the name of the degree awarded.

## BA Joint Honours

Criminology and Social Policy 3 yrs (ML94)

### Entrance Requirements

#### A-level:

ABB

#### All applicants:

There are no specific subject requirements to study Criminology and Social Policy.

#### For students whose first language is not English:

An IELTS score of 6.5 with a minimum of 5.5 in each test component or an equivalent acceptable qualification, details of which are available at: [go.qub.ac.uk/EnglishLanguageReqs](http://go.qub.ac.uk/EnglishLanguageReqs)

FIND  
OUT  
MORE:



## WHY QUEEN'S?

### Research-led Teaching

Criminology and Social Policy is taught by a group of internationally recognised researchers who specialise in areas such as criminal justice policy, prisons, desistance from crime, offender reintegration, drug use, youth justice, conflict, social justice, gender inequality, population ageing, disability and human rights.

### Prizes

The highest achieving students are regularly awarded prizes and scholarships, such as the SWAN prizes for best pieces of work on gender, the Lockheed Prize and the Foundation Scholarships.

### Study Abroad

Students can spend time studying in one of our linked universities in Europe. There are other opportunities to study or work abroad, supported by schemes such as the Turing scheme, Erasmus and Study USA.

### Facilities

The School has state-of-the-art teaching and learning facilities, together with dedicated student space including a large student common room. The teaching facilities enable an interactive learning environment.

## CAREERS/FURTHER STUDY

Criminology and Social Policy graduates are ideally placed for work in a range of occupations, including the Civil Service, public services, policy analysis, media, research, teaching, business, the voluntary sector, commerce, marketing and management. Some graduates build on the degree by undertaking postgraduate training in fields such as social work, law, social science research and teaching. Tailored careers advice and study guidance are available to all students throughout their time at Queen's.

Studying for a Social Policy/Criminology degree at Queen's will assist you in developing the core skills and employment-related experiences that are valued by employers, professional organisations and academic institutions. Graduates from this degree at Queen's are well regarded by many employers (local, national and international) and over half of all graduate jobs are now open to graduates of any discipline.

Typical career destinations of graduates include:

- Researcher
- Civil Servant
- Policy Analyst
- Charity Fundraiser
- Market Researcher
- Youth and Community Worker

The following is a list of some of the employers that have attracted graduates from the School in recent years:

- Northern Ireland Civil Service
- Northern Ireland Housing Executive
- National Health Service
- Northern Ireland Statistics and Research Agency
- PwC
- Ulster Bank
- Commission for Victims and Survivors NI
- Santander
- Belfast City Council
- Ipsos MORI

“The course offers a wide range of interesting and diverse modules covering many topics and interests. The support and guidance from the department and the expertise of staff has provided me with an invaluable experience that has furthered my knowledge and understanding of both criminological and sociological theory and has motivated me to further my learning by undertaking a Master's degree at Queen's.”

Rachel Stanley  
Joint Honours Graduate



### Entrance requirements

e: [admissions@qub.ac.uk](mailto:admissions@qub.ac.uk)  
t: +44 (0)28 9097 3838

### Course information

Dr Michelle Butler  
School of Social Sciences,  
Education and Social Work

e: [michelle.butler@qub.ac.uk](mailto:michelle.butler@qub.ac.uk)  
t: +44 (0)28 9097 3956  
w: [qub.ac.uk/ssesw](http://qub.ac.uk/ssesw)

# CRIMINOLOGY AND SOCIOLOGY

Criminology provides a unique vantage point to study crime and justice in a society transitioning from conflict. Criminologists are interested in how activities come to be defined as 'criminal', and why definitions and responses to crime vary over time and place. The subject includes a broad range of perspectives on understanding crime and criminal behaviour and examines various methods in the prevention, policing and punishment of crime. The course also considers how and why people move away from crime, ways in which this might be facilitated and offender reintegration.

Sociology provides a thorough academic grounding in the understanding of social life and human behaviour of all kinds. It equips students with the skills to understand the breadth of social practice, ranging from the global (including power and politics, conflict and peace processes, security, the digital world, climate change, racism and social justice) to individual experiences (such as the body, intimacy, emotions, identity, beliefs and mental health).

## COURSE CONTENT

Courses often draw on international comparisons with a strong Irish (North and South) emphasis.

### Stage 1

- Introducing Criminology
- Introducing Social Policy
- Crime and Society
- Rethinking Society
- The Sociological Imagination
- Digital Society
- Visualising the Social World

### Stage 2

Compulsory modules

- Criminological Theory or The Power of Social Theory
- Policing and Society
- Qualitative Research Skills
- Quantitative Research Skills

Optional modules

- Theory Counts
- Sociology of Conflict and Peace
- Social Inequalities and Diversity
- Crime and the Media
- Exploring Harm and Victimisation

### Stage 3

Compulsory modules

- Punishment, Penal Policy and Prisons

Optional modules

- Contemporary Irish Society
- Religion: Death or Revival
- Youth, Crime and Criminal Justice
- Criminology Beyond Borders
- Norms and Social Change
- Reintegration After Prison
- Psychological Perspectives on Crime
- Emotion, Power, and Politics
- Modelling the Social World
- Social Identity: Difference and Inequalities
- The Sociology of Protest and Revolution
- The Cultural Politics of Memory from a Global Perspective

### Optional Quantitative Methods Exit Pathway

Students who wish to benefit from specialist training in quantitative research can undertake a series of dedicated social science research modules over the course of their degree studies. Successful completion of 80 CATS credits of advanced quantitative research training (four modules) in stages 2 and 3 will receive the enhancement of BSc 'with Quantitative Methods' added to the name of the degree awarded.

## BA Joint Honours

Criminology and Sociology 3 yrs (ML93)

### Entrance Requirements

A-level:

ABB

All applicants:

There are no specific subject requirements to study Criminology and Sociology.

For students whose first language is not English:

An IELTS score of 6.5 with a minimum of 5.5 in each test component or an equivalent acceptable qualification, details of which are available at: [go.qub.ac.uk/EnglishLanguageReqs](http://go.qub.ac.uk/EnglishLanguageReqs)

## WHY QUEEN'S?

### Research-led Teaching

Criminology and Sociology is taught by a group of internationally recognised researchers who specialise in areas such as criminal justice policy, prisons, desistance from crime, offender reintegration, youth justice, conflict and transitional justice, family, religion conflict, social movements and social change.

### Prizes

The highest achieving students are regularly awarded prizes and scholarships, such as the SWAN prizes for best pieces of work on gender, the Lockheed Prize and the Foundation Scholarships.

### Study Abroad

Students can spend time studying in one of our linked universities in Europe. There are other opportunities to study or work abroad, supported by schemes such as the Turing scheme, Erasmus and Study USA.

### Facilities

The School has state-of-the-art teaching and learning facilities, together with dedicated student space including a large student common room. The teaching facilities enable an interactive learning environment.

## CAREERS/FURTHER STUDY

Criminology and Sociology graduates work in a wide range of occupations, including the media, Civil Service, police, research, teaching, business, commerce, marketing and management. Some graduates build on the degree by undertaking postgraduate training in fields such as social work, law, social science research and teaching. Tailored careers advice and study guidance is available to all students throughout their time at Queen's.

Studying for a Joint Honours Degree in Criminology and Sociology at Queen's will assist you in developing the core skills and employment-related experiences that are valued by employers, professional organisations and academic institutions. Graduates from this degree at Queen's are well regarded by many employers (local, national and international) and over half of all graduate jobs are now open to graduates of any discipline.

The diversity of interests and topics covered in the discipline, plus the wide range of skills it equips you with, means that our students enter a wide range of careers upon graduating. These include the public sector (e.g. social services, education, criminal justice, social work), private sector (e.g. market research, policy analysis, human resources), and third sector (e.g. policy analyst, researcher, youth support worker, charity fundraiser). A number of our students also go on to postgraduate study, on a full or part-time basis.

Typical career destinations of graduates include:

- Victim Support Worker
- Crime Analyst
- Working with people in conflict with the law (e.g. offender management, rehabilitation, etc.)
- Researcher
- Civil Servant (e.g. Police Officer, Prison Officer, etc.)
- Policy Analyst (e.g. working to shape criminal justice policy and practice)
- Charity Worker (e.g. working with the families of victims and/or offenders)
- Youth and Community Worker

Graduate employers include:

- Northern Ireland Civil Service
- Northern Ireland Housing Executive
- National Health Service
- Northern Ireland Statistics and Research Agency
- PwC
- Ulster Bank
- Santander
- Belfast City Council
- Ipsos MORI
- Commission for Victims and Survivors NI

### Further Study

Further study is also an option open to Criminology and Sociology graduates. You can choose from a wide range of Master's programmes as well as a comprehensive list of research topics.

**Criminology and Sociology at Queen's provides a unique context to study crime and justice in a society emerging from conflict.**

### Entrance requirements

e: [admissions@qub.ac.uk](mailto:admissions@qub.ac.uk)  
t: +44 (0)28 9097 3838

### Course information

Dr Michelle Butler  
School of Social Sciences,  
Education and Social Work

e: [michelle.butler@qub.ac.uk](mailto:michelle.butler@qub.ac.uk)  
t: +44 (0)28 9097 3956  
w: [qub.ac.uk/ssesw](http://qub.ac.uk/ssesw)

FIND OUT MORE:



# SOCIAL POLICY AND SOCIOLOGY

Social Policy students learn how to tackle major policy problems. They do this by applying core concepts from social science to intractable social problems such as gender inequality, eldercare, children's rights and climate change. As an applied and critical social science, you will gain knowledge and understanding of contemporary government policies and consider how we can achieve improvements.

Sociology is a scientific discipline concerned with the explanation of social life and human behaviour of all kinds. It equips students with the skills to understand the breadth of social practice, ranging from the global (including power and politics, conflict and peace processes, security, the digital world, climate change, racism and social justice) to individual experiences (such as the body, intimacy, emotions, identity, beliefs and mental health). Through theoretical tools and methodological techniques, Sociology at Queen's provides students with a unique way of interacting with the world as critical and engaged citizens.

Drawing on multidisciplinary ideas from politics, sociology, economics and law, this course helps create highly relevant and versatile graduates with the ability to enter employment at local, national and international levels.

## COURSE CONTENT

### Stage 1

Compulsory modules

- Introducing Social Policy
- Rethinking Society
- Themes and Issues in Social Policy
- Digital Society
- Sociological Imagination

Optional modules

- Introducing Criminology
- Visualising the Social World

### Stage 2

Compulsory modules

- Welfare in Theory and Practice
- The Power of Social Theory
- Qualitative Research Skills
- Quantitative Research Skills
- Social Inequalities and Diversity
- Questions for an Ageing World

Optional module

- Theory Counts
- Questions for an Ageing World
- Social Inequalities and Diversity

### Stage 3

Compulsory modules

- Policy Briefing Paper
- Gender, Family and Social Policy
- Disability and Society

Optional modules

- Contemporary Irish Society
- Religion: Death or Revival
- Modern Families, Intimate and Personal Relationships
- Norms and Social Change
- Emotion, Power, Politics
- Modelling the Social World
- Social Identity: Difference and Inequalities
- The Sociology of Protest and Revolution
- The Cultural Politics of Memory from a Global Perspective

### Optional Quantitative Methods Exit Pathway

Students who wish to benefit from specialist training in quantitative research can undertake a series of dedicated social science research modules over the course of their degree studies. Successful completion of 80 CATS credits of advanced quantitative research training (four modules) in stages

## BA Joint Honours

Social Policy and Sociology 3 yrs (LL43)

### Entrance Requirements

BA Criminology and Social Policy

A-level:

ABB

BA Social Policy and Sociology

A-level:

BBB

All applicants: there are no specific subject requirements to study Social Policy and Sociology.

For students whose first language is not English:

An IELTS score of 6.5 with a minimum of 5.5 in each test component or an equivalent acceptable qualification, details of which are available at: [go.qub.ac.uk/EnglishLanguageReqs](http://go.qub.ac.uk/EnglishLanguageReqs)

FIND OUT MORE:



2 and 3 will receive the enhancement of BSc 'with Quantitative Methods' added to the name of the degree awarded.

## WHY QUEEN'S?

### Award-winning Teaching

Students in the School are educated in a dynamic academic environment by award-winning teaching staff, and in a recent government-sponsored review of research, staff in the School achieved 'world-leading' and 'international excellence' status for the high quality of their research work.

### Prizes

The highest achieving students are regularly awarded prizes and scholarships, such as the SWAN prizes for best pieces of work on gender, the Lockheed Prize and the Foundation Scholarships.

### Study Abroad

Students can spend time studying in one of our linked universities in Europe. There are other opportunities to study or work abroad, supported by schemes such as the Turing scheme, Erasmus and Study USA.

## CAREERS/FURTHER STUDY

Social Policy and Sociology graduates are ideally placed for work in a range of occupations, including the Civil Service, public services, policy analysis, media, research, teaching, business, the voluntary sector, commerce, marketing and management. Some graduates build on the degree by undertaking postgraduate training in fields such as social work, law, social science research and teaching. Tailored careers advice and study guidance is available to all students throughout their time at Queen's.

### Entrance requirements

e: [admissions@qub.ac.uk](mailto:admissions@qub.ac.uk)  
t: +44 (0)28 9097 3838

### Course information

Dr Elizabeth Martin, Programme Director for BA Joint Honours Social Policy and Sociology  
School of Social Sciences, Education and Social Work

e: [spyprogrammedirector@qub.ac.uk](mailto:spyprogrammedirector@qub.ac.uk)  
t: +44 (0)28 9097 5941  
w: [qub.ac.uk/ssesw](http://qub.ac.uk/ssesw)

Studying for a Social Policy and Sociology degree at Queen's will assist you in developing the core skills and employment related experiences that are valued by employers, professional organisations and academic institutions. Graduates from this degree are well regarded by many employers (local, national and international) and over half of all graduate jobs are now open to graduates of any discipline.

The diversity of interests and topics covered in the discipline, plus the wide range of skills it equips you with, means that our students enter a wide range of careers on graduation. These include the public sector (e.g. social services, education, criminal justice, social work), private sector (e.g. market research, policy analysis, human resources), and third sector (e.g. policy analyst, researcher, youth support worker, charity fundraiser). A number of our students also go on to postgraduate study, on a full- or part-time basis.

The following is a list of some of the employers that have attracted graduates from the School in recent years:

- Northern Ireland Civil Service
- Northern Ireland Housing Executive
- National Health Service
- Northern Ireland Statistics and Research Agency
- PwC
- Ulster Bank
- Commission for Victims and Survivors NI

- Santander
- Belfast City Council
- Ipsos MORI
- South Eastern Library Board
- REED
- Queen's University Belfast
- Ulster University

### Further Study

Students can choose from a wide range of Master's degree programmes as well as a comprehensive list of research topics.

"Social Policy offers a unique insight into various realms of social life, such as the family, the judicial system and the health care system. Not only did this subject enable me to understand how these social realms are interconnected, it opened my eyes to the impact they have on the trajectory of my own life, such as how my income will impact on my health outcomes. I was taught by academics who are truly passionate about their field and who set coursework which was exceptionally varied and designed with employability skills in mind."

Erin Delaney  
BA (Hons) Social Policy and Sociology



# SOCIAL WORK

The Bachelor of Social Work (BSW) degree is a professional qualification in Social Work accredited by the Northern Ireland Social Care Council (thereafter Social Care Council) and recognised throughout the UK, the Republic of Ireland and elsewhere. The programme is a combination of academic study and assessed practice learning opportunities. Practice Learning Opportunities are regionally allocated in collaboration with the Northern Ireland Degree in Social Work Partnership and key stakeholders.

## COURSE CONTENT

Modules often draw on recent developments within policy, research and theory. The teaching is research-informed and uses international comparisons. Service user involvement permeates all the modules, through direct involvement, research findings or online or audio/visual resources.

### Level 1 (Undergraduate Route)

#### Semester 1

- Introduction to Social Work
- Law for Social Workers
- Preparation for Practice Learning

#### Semester 2

- Themes and Issues in Social Policy
- Psychology for Social Work
- Sociology for Social Work

### Level 2 (Undergraduate Route)

#### Semester 1

- Practice Learning Level 2
- Evidence Informed Case Study Level 2

#### Semester 2

- Social Work in Context
- Research, Policy and Practice
- Social Issues across the Life Course

### Level 2 (Relevant Graduate Route)

- Introduction to Social Work
- Law for Social Workers
- Preparation for Practice Learning
- Practice Learning Level 2
- Evidence Informed Case Study Level 2

### Level 3 (Undergraduate and Relevant Graduate Routes)

#### Semester 1

- Social Work with Children and Families
- Social Work in Adult Services
- Social Work in Criminal Justice and the Courts

#### Semester 2

- Practice Learning Level 3
- Evidence Informed Project Level 3

## WHY QUEEN'S?

You can champion human rights and social justice, and make a positive difference in people's lives.

You will join a profession that offers variety and fulfilment.

You will have a choice of employment opportunities across settings, service user groups, and organisations.

You will be fully supported throughout your learning and development.

Social Work is professionally accredited by the NI Social Care Council.

All social work students living in Northern Ireland are eligible to apply for a bursary of £4,000 for each year of study, with an additional £500 p.a. to assist with travel costs. Please see full details, following the link: [health-ni.gov.uk](https://health-ni.gov.uk)

For more information on Social Work and how to apply, visit the Social Care Council's online resource. <https://niscc.info/careers>

**FIND  
OUT  
MORE:**



## BSW Honours

Social Work (Undergraduate Route) 3 yrs (L500)

Social Work (Relevant Graduate Route) 2 yrs (L501)

### Entrance Requirements

#### A-level:

ABB + GCSE Mathematics grade C/4 or an equivalent qualification acceptable to the University

**Graduates:** minimum standard 2.2, applicants must have a minimum of a grade C/4 in GCSE Mathematics or an equivalent qualification acceptable to the University.

**Relevant Graduate Entry:** students with a relevant Honours degree (minimum standard 2.2) will be considered for admission to a shortened two-year course leading to the Bachelor of Social Work (BSW) degree. Applicants must have a minimum of a grade C/4 in GCSE Mathematics or an equivalent qualification acceptable to the University.

A relevant degree is deemed to be an Honours degree where at least one third of the course passed at Honours level comprises one or more of the following: Sociology, Psychology, Social Policy/ Social Administration; and degrees in Law, Teaching, Nursing, Community Work, Youth Work, Early Childhood Studies, Criminology, Health and Social Care, Occupational Therapy, Human Communication/Counselling, Social Anthropology, Housing Studies or other cognate subjects.

Graduates in any other subjects (minimum standard 2.2) who have successfully completed a Postgraduate Certificate in Education (PGCE) will also be considered.

#### All applicants:

1. Because of the professional nature of the course, a satisfactory Access NI check and registration with the Northern Ireland Social Care Council are required.
2. Whilst not a requirement it would be beneficial for applicants to have experience of helping or mentoring others (paid or voluntary).
3. Applicants being considered for an offer will be interviewed to assess their suitability for Social Work training. The interview is organised on a regional basis enabling eligible applicants to have a single interview for all Northern Ireland Social Work programmes.

For students whose first language is not English:

An IELTS score of 6.5 with a minimum of 5.5 in each test component or an equivalent acceptable qualification, details of which are available at: [go.qub.ac.uk/EnglishLanguageReqs](https://go.qub.ac.uk/EnglishLanguageReqs)



## International Opportunities

Whilst on the BSW degree there will be opportunities to engage with social work students from other countries to explore social work education and practice from an international perspective. The degree in Social Work will enable graduates to work in countries outside of the UK throughout their career.

## Prizes

The highest achieving students in Social Work are awarded the annual Brian Rankin Prize with the highest achieving student receiving the Brian Rankin medal.

## CAREERS/FURTHER STUDY

Studying for a Social Work degree at Queen's will assist you in developing the core skills, knowledge and values desired by employers, professional organisations and academic institutions. Queen's is currently ranked joint 2nd in the UK for career prospects for Social Work according to the Complete University Guide (2021).

## Employment after the Course

Queen's graduates are well regarded by many social work employers (statutory and voluntary). According to data provided by the Social Care Council, 80% of social work graduates are registered for their Assessed Year in Employment (AYE) within 6 months of graduation.

For information on the Assessed Year in Employment see [niscc.info/assessed-year-inemployment-aye](https://niscc.info/assessed-year-inemployment-aye)

For employment opportunities in the statutory sector in Northern Ireland see <https://jobs.hscni.net>

For registration as a social worker in the Republic of Ireland see <https://www.coru.ie/about-us/registration-boards/social-workers-registration-board>

## Employers

Social workers are employed throughout the statutory and voluntary/third sector social work agencies. There are opportunities for career progression into specialist posts or various levels of management.

You should also take a look at [prospects.ac.uk](https://prospects.ac.uk) and [niscc.info](https://niscc.info) for further information concerning the types of jobs that attract social work graduates.

The typical starting salary of Social Work graduates is £22,000 (based on the Agenda for Change Pay scale for Band 5), increasing to £28,000 (Band 6) upon completion of the Assessed Year in Employment.

## Further Study

Further study is also an option open to social work graduates. Students can choose from a wide range of Master's and PhD programmes, as well as a comprehensive list of postgraduate courses.

"The degree equips students with the knowledge, values and skills required for effective social work practice. We have developed important partnerships with service user and carer organisations across Northern Ireland who assist us in these important aspects of teaching. At a very early stage in the course, students visit these groups in their own community settings as part of their teaching on the real meaning of social work values."

Professor Joe Duffy  
Professor of Social Work



**QUEEN'S IS RANKED 2ND IN  
THE UK FOR SOCIAL WORK**  
(Times and Sunday Times Good  
University Guide 2023)

## Entrance requirements

e: [sseswsocialworkadmissions@qub.ac.uk](mailto:sseswsocialworkadmissions@qub.ac.uk)  
t: +44 (0)28 9097 3838

## Course information

Dr Mandi MacDonald  
Academic Selector  
(BSW admissions)  
Chair Admissions Committee  
t: +44 (0)28 9097 5941

or

Dr Paul McCafferty  
Programme Director  
(Relevant Graduate Route)  
t: +44 (0)28 9097 3310  
w: [qub.ac.uk/ssesw](https://qub.ac.uk/ssesw)

# SOCIOLOGY

Sociology is a discipline concerned with the explanation and understanding of social life and human behaviour. It equips students with the skills to understand the breadth of social experience, ranging from global (including power and politics, religion, conflict and peace, the digital world, climate change, racism, sexism and other forms of inequality) to individual experiences (such as family life, intimacy, emotions, beliefs and mental health). Through theoretical tools and methodological techniques, Sociology at Queen's provides students with a unique way of learning to explain the dynamics of social life as critical and engaged citizens.

## COURSE CONTENT

The Sociology team's diverse research interests translate into an exciting and dynamic programme, with opportunities to study a range of subjects, such as:

- Intimacy, Families and Gender
- Conflict, Deviance, Violence and Peace Building
- Emotions and Politics
- Ethnicity, Race and Racism
- Health, Illness and Care
- Inequalities, Poverty and Social Exclusion
- Religion and Extremism
- Research Methods and Data Skills (Quantitative and Qualitative)
- Social Change
- Social Movements

### Stage 1

In first year, you will learn to think sociologically and explore the sociological imagination using up-to-date research, from studies on racism in Britain to 'hoods' in Belfast. Our core module Digital Society allows students to critically reflect on the impact of digital technology on our interactions and identities, from social media to artificial intelligence.

### Core Modules

- Rethinking Sociology
- The Sociological Imagination
- Digital Society
- Introducing Social Policy

### Optional Modules

- Crime and Society
- Introducing Criminology
- Visualising the Social World
- Introducing Social Policy
- Themes and Issues in Social Policy
- Comparative Politics
- Issues in Contemporary Politics

### Stage 2

In second year, you will be introduced to classical and contemporary theories, and develop proficiency in quantitative and qualitative research methods. You will gain skills in using the most widely used software, for example, SPSS and NVivo. We take advantage of ARK, a key resource situated in the School, and use their wide range of attitudinal surveys, often commissioned by government and key NI organisations. This allows students to apply their research skills training to contemporary issues, using the latest survey data.

### Core Modules

- The Power of Social Theory
- Quantitative Research Skills
- Social Inequalities and Diversity
- Qualitative Research Skills

### Optional Modules

- Northern Ireland: Identities, Ideologies and Futures
- Welfare in Theory and Practice
- Questions for an Ageing World
- Theory Counts
- Gender and Migration
- Sociology of Conflict and Peace

### Stage 3

In final year, students design and undertake their own research project, under the guidance of a dedicated supervisor. This allows students to develop their own research question on a topic of their own selection, building on their studies. We encourage students to partner with community organisations to ensure that their research has direct and often immediate impact, where it is needed. As well as the development of specialist subject knowledge, the final year project provides key transferable skills, including

### BA Single Honours

Sociology 3yrs (L300)

### BA Joint Honours

Criminology and Sociology 3 yrs (ML93)

English and Sociology 3 yrs (QL33)

History and Sociology 3 yrs (VL13)

Social Policy and Sociology 3 yrs (LL43)

## Entrance Requirements

### A-level:

BBB for BA Single Honours

### All applicants:

There are no specific subject requirements to study Sociology, however, if you plan to study Sociology as a Joint Honours degree you should refer to the subject requirements for the other course.

### For students whose first language is not English:

An IELTS score of 6.5 with a minimum of 5.5 in each test component or an equivalent acceptable qualification, details of which are available at: [go.qub.ac.uk/EnglishLanguageReqs](http://go.qub.ac.uk/EnglishLanguageReqs)

FIND  
OUT  
MORE:



independent project management and problem solving. A key aspect of final year is the ability to choose from the specialist Sociology options, reflecting the team's research interests.

### Optional Modules

- Religion: Death or Revival
- Norms and Social Change
- Emotion, Power, and Politics: The Political Sociology of Emotions, Trump, Brexit, and Populism
- Modern Families: Intimate and Personal Relationships
- Disability and Society
- Contemporary Irish Society
- Modelling the Social World
- Social Identity: Difference and Inequalities
- The Sociology of Protest and Revolution
- The Cultural Politics of Memory from a Global Perspective

### Optional Quantitative Methods Exit Pathway

Students who wish to benefit from specialist training in quantitative research can undertake a series of dedicated social science research modules over the course of their degree studies. Successful completion of 80 CATS credits of advanced quantitative research training (four modules) in stages 2 and 3 will receive the enhancement of BSc 'with Quantitative Methods' added to the name of the degree awarded.

## WHY QUEEN'S?

### Personal Tutor

You will be assigned a personal tutor during induction. This member of academic staff will provide one-to-one support and mentoring throughout your studies at Queen's.

### Study Abroad

We have a solid tradition of students undertaking Study Abroad through Erasmus schemes (with universities in Barcelona, Lünd in Sweden, Paris and Aix en Provence in France, Munich and Dusseldorf in Germany, Rotterdam and Nijmegen in the Netherlands, Jyväskylä in Finland).

### Prizes

The highest achieving students are regularly awarded prizes and scholarships, such as the SWAN prizes for best pieces of work on gender, the Lockheed Prize and the Foundation Scholarships.

## Research-led Teaching

Sociology is taught by a group of internationally recognised scholars who specialise in areas such as family, childhood, religion and conflict.

## CAREERS/FURTHER STUDY

Your degree in Sociology will equip you with a range of transferable skills that are highly sought in a wide variety of fields in the contemporary jobs market. Sociology graduates are found in a range of occupations, including management, communication, marketing, sales, retail, journalism, media research and publishing, youth and community work, charities and the voluntary sector, healthcare, social and civil services, and education. Sociology is also a good fit for a variety of careers in business: it develops the ability to gather and evaluate evidence; to engage in critical analysis; and to understand and explain complex problems and situations.

Our graduates have worked for organisations beyond and within Northern Ireland, such as:

- Northern Ireland Statistics and Research Agency (NISRA)
- Belfast Child
- Johnsons Solicitors
- PricewaterhouseCoopers
- Lloyds Banking Group
- Barnardos
- Northern Ireland Housing Executive

"My Sociology degree opened my eyes about the world. I now question everything and my curiosity has grown! It has helped develop my analytical and problem-solving skills, which are essential for the modern workplace."

Anna Savage

BA Sociology graduate  
Statistical Officer, NISRA

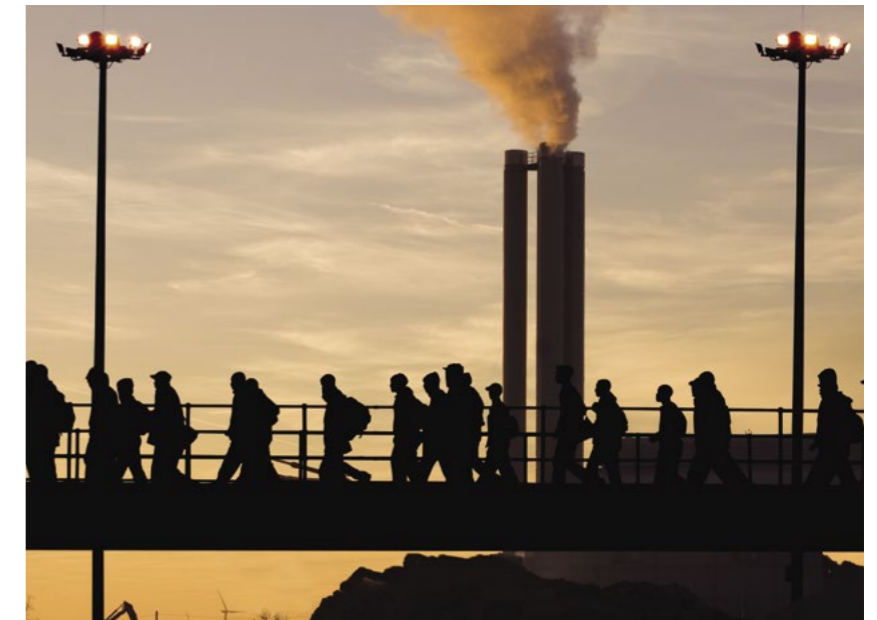
### Entrance requirements

e: [admissions@qub.ac.uk](mailto:admissions@qub.ac.uk)  
t: +44 (0)28 9097 3838

### Course information

Professor Lisa Smyth  
School of Social Sciences,  
Education and Social Work

e: [l.smyth@qub.ac.uk](mailto:l.smyth@qub.ac.uk)  
t: +44 (0)28 9097 3251  
w: [qub.ac.uk/ssesw](http://qub.ac.uk/ssesw)







## A RUSSELL GROUP UNIVERSITY

As a member of the Russell Group, we are one of the UK's 24 leading universities, providing our students with a world-class education underpinned by world-class research. Queen's researchers work closely with more than 250 universities around the world.

## RESEARCH AND TEACHING EXCELLENCE

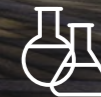
Our teaching quality is recognised as being of the highest standard. Queen's students are taught by academics who are informed by the latest discoveries in their fields. The University has won five Queen's Anniversary Prizes for Further and Higher Education, for world-class achievement in green chemistry, environmental

research, palaeoecology, law and for Northern Ireland's Comprehensive Cancer Services (CCS) programme. The latest UK Research Excellence Framework 2021 revealed that over 99% of Queen's research environment was assessed as world-leading or internationally excellent, and the University's research strengths are reflected in the quality of our teaching.

## WORLD-CLASS CAMPUS

Queen's has one of the most modern campuses in the UK, including the award-winning McClay Library, one of the finest libraries in the world and home to 1.2 million volumes and 2,000 reader places. Other highlights include our new-look Students' Union, the state-of-the-art Physical Education Centre – used as a training camp for the 2012 Olympics. Queen's Elms Student Village or the brand new city centre accommodation Elms BT1 and Elms BT2 are located within easy walking distance of the University.

**RUSSELL GROUP**



**WORLD-LEADING RESEARCH**

**RANKED 13TH IN THE UK FOR RESEARCH INTENSITY**

(Complete University Guide 2023)



**£700M INVESTMENT IN FACILITIES**

(£350m over past decade and £350m in the coming decade)

# ABOUT BELFAST AND NORTHERN IRELAND

Belfast is one of the UK and Ireland's most vibrant and affordable cities, packed with energy, culture and history. Queen's majestic campus is in Queen's Quarter, with cafés, bars, restaurants, plenty of shopping and entertainment venues. (Complete University Guide 2023)

- Great entertainment and nights out; a buzzing arts and social scene from festivals, theatre and international events to historic pubs, stylish bars and brilliant shopping.
- The rest of the UK, Ireland and Europe are within easy reach with accessible airport and transport links to most major cities.
- Beautiful scenery and outdoor adventures such as the Giant's Causeway or hiking in the Mourne Mountains.
- Belfast has the lowest cost of living in the UK (Mercer Cost of Living City Ranking 2022).



**BELFAST AND THE CAUSEWAY COAST NAMED THE NUMBER ONE REGION IN THE WORLD TO VISIT**  
(Lonely Planet 2018)



**NORTHERN IRELAND IS THE HAPPIEST PLACE IN THE UK**  
(Lloyds Bank Happiness Index 2020)



**OVER £300 PER MONTH CHEAPER FOR STUDENTS TO LIVE IN BELFAST COMPARED TO LONDON**  
(Which? Student Budget Calculator 2022)



**TITANIC BELFAST MUSEUM WORLD'S BEST VISITOR ATTRACTION**  
(World Travel Awards 2016)



**MOURNE MOUNTAINS**



**'ECLECTIC MURALS, LIVELY MUSIC SCENE AND FRIENDLY COMMUNITY'**  
(Times and Sunday Times Good University Guide 2021)



Information is correct at time of print and is subject to change (May 2023). For current information, please visit [www.qub.ac.uk/courses](http://www.qub.ac.uk/courses)



**QUEEN'S  
UNIVERSITY  
BELFAST**

SCHOOL OF  
SOCIAL SCIENCES,  
EDUCATION AND  
SOCIAL WORK

69-71 University Street  
Belfast  
BT7 1HL

t: +44 (0)28 9097 5941/3323/5117  
e: [askahss@qub.ac.uk](mailto:askahss@qub.ac.uk)  
[www.qub.ac.uk/ssesw](http://www.qub.ac.uk/ssesw)