

INTO »



Queen's University
Belfast



9th

oldest university in the UK



University pathways

Academic and English preparation
for international students

2017-2018



UK's most affordable
student city



Top 200 in the
world for '**graduate
employability**'

(QS World University Rankings 2015-2016)

World-class education
from a **Russell Group
university**: one of the
UK's 24 leading research-
intensive universities

Top 1%
of universities
worldwide

(QS World University Rankings 2015-2016)

Top 25 'most international'
universities worldwide

(Times Higher Education World University Rankings 2015-2016)



Top 10 in the UK in 15 subject areas

(The Times and The Sunday Times
Good University Guide 2016)

Belfast named the
**UK's most
affordable**
student city

(NatWest Student Living Index 2015)

1st in the UK for
international students'
overall learning experience

(International Student Barometer 2015)



The INTO Centre is a five minute walk from the library and the Students' Union.



McClay Library



Lanyon Building



Botanic Gardens





INTO Centre



Student accommodation



Students' Union

Contents

Destination Queen's University Belfast

- 7 About the University
- 9 Careers and employability
- 11 Your Study Centre
- 13 Celebrating student success
- 14 World-class facilities
- 18 About Belfast city
- 21 Accommodation

About our courses and application

- 24 Choosing your course
- 25 International Foundation
- 38 **Integrated Programmes:**
Undergraduate
- 40 International Year One
- 50 Graduate Diploma
- 56 Improving your English
- 58 How to apply
- 59 Application form
- 62 Terms and conditions
- 66 Dates and prices

▼ Queen's University Belfast campus

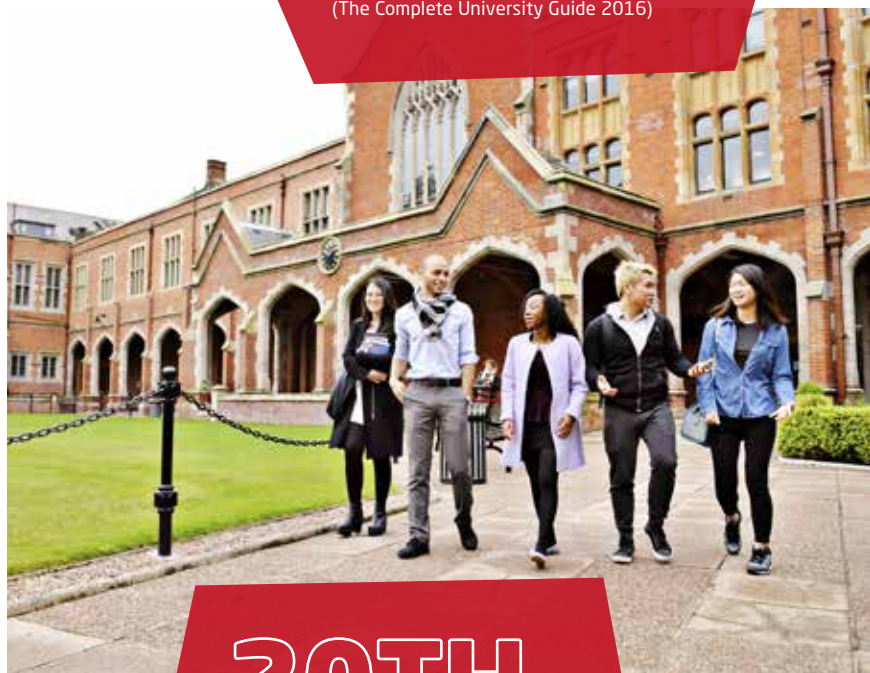


"Queen's University Belfast is an international centre of academic excellence. We have students from over 70 countries, more than ever before. Our international students are highly valued members of the Queen's University family, enriching our dynamic and diverse learning community and contributing to all aspects of university life."

Professor Patrick G Johnston, President
and Vice-Chancellor, Queen's University Belfast

2ND

in the UK for 'research intensity'
(The Complete University Guide 2016)



20TH

in the world for
international outlook

(Times Higher Education World
University Rankings 2015-2016)

About the University

Through a unique blend of heritage, tradition, innovation and future-thinking values, Queen's University inspires its students enabling you to realise your full potential and enjoy a first-class student experience.

A RUSSELL GROUP UNIVERSITY

Established by Queen Victoria in 1845, Queen's is one of the UK's leading research-intensive universities and a member of the Russell Group, an independent body of 24 top-ranking, research-led universities in the UK. These strengths are reflected in exceptional teaching standards and independent assessments demonstrate that Queen's is in the top rank of UK universities.

TEACHING EXCELLENCE

Queen's places a strong focus on education and research, and is a strong player in the global community, with collaborations with institutions across the world.

With a dynamic and broad-based curriculum, there is something for everyone. If you are interested in Arts, Humanities and Social Sciences, the choice is enormous, embracing traditional disciplines as well as recent introductions, such as Drama and Film Studies. Engineering and Physical Sciences students benefit from the extensive refurbishment of laboratories. Medicine, Health and Life Sciences students have access to first-class facilities. If you follow a Medicine or Health and Life Sciences programme, courses are based on the needs of future healthcare professionals and life scientists.

HIGHLY RANKED

Queen's is ranked as one of the top 200 universities in the world, placing it in the top 1% of universities worldwide (QS World University Rankings 2015-2016). Queen's is also ranked in the top 25 'most international' universities worldwide (Times Higher Education World University Rankings 2015-2016).

INNOVATIVE

Five consecutive Times Higher Education Awards (2008-2012) recognise innovation at Queen's:

- Excellence and Innovation in the Arts
- UK Entrepreneurial University of the Year
- Outstanding Engineering Research Team of the Year
- Most Innovative Teacher of the Year
- Outstanding Fundraising Team

In 2014, Queen's lecturer Joe Duffy was named one of the UK's most outstanding teachers. Involved in pioneering teaching methods with carers and service users, Dr Duffy was awarded a National Teaching Fellowship by the Higher Education Authority (HEA) - the most prestigious annual awards in higher education in the UK.

Queen's is at the forefront of using Information and Communications Technology (ICT) to support learning and teaching. It has blended e-learning with traditional learning and teaching values creating a flexible and dynamic learning environment for you to experience.

RESEARCH

Queen's is committed to the development of a research and education portfolio that is one of the best in the world. The Research Excellence Framework 2014 demonstrated the University's world-leading role across all disciplines. In the results, 26 subjects were in the top 20 in the UK for 'research intensity'. Agriculture and Food Science, and Social Anthropology ranked top in their fields. The results also showed that Queen's ranks 17th in the UK for both 'research power' and 'research impact'.

FAMOUS ALUMNI

Join an academic institution with a distinguished past along with generations of famous graduates, including:

- Nobel prize-winning poet, the late Seamus Heaney
- Northern Ireland's former First Minister, David Trimble
- former President of Ireland, Mary McAleese
- former US President, Bill Clinton
- former South African President, the late Nelson Mandela
- Professor Frank Pantridge, who developed the mobile coronary care unit

Top 20

for spend on facilities

(The Complete University Guide 2016)



"At INTO Queen's University Belfast, you will benefit from quality-assured university courses delivered on a world-class Russell Group university campus, and the opportunity to progress to a wide range of degrees at Queen's. We look forward to welcoming you."

Isabel Jennings, Director of Marketing, Recruitment, Communications and Internationalisation



27TH

in the UK for graduate prospects

(The Times and The Sunday Times
Good University Guide 2016)

Careers and employability

Employability is at the heart of Queen's curriculum, and careers guidance and information are an integral part of all School-level induction programmes.

CAREER-FOCUSED

Queen's Degree Plus Award aims to give you a competitive edge in the graduate job market. This innovative programme acknowledges skills gained through participation in extracurricular activities such as voluntary work, part-time jobs and sport – skills that are of interest to employers worldwide.

CAREERS ADVICE

MyFuture is the career management system for students at Queen's University Belfast. Managed by a dedicated Careers, Employability and Skills team, it allows you to search for jobs, register for events and make appointments with careers advisers. You will also benefit from the University's employability links to over 3,000 local, national and international companies.

ENTERPRISE

A Certificate in Entrepreneurship Studies now fully embeds entrepreneurship skills into the University's curriculum to help students develop all-important 'enterprise for life' skills.

PLACEMENTS AND INTERSHIPS

Many of the degree programmes at Queen's feature a year in industry, either locally or abroad. The Santander Internship Programme also provides you with the opportunity to gain practical experience.

WORK-READY GRADUATES

The University is ranked 27th in the UK for graduate prospects (The Times and The Sunday Times Good University Guide 2016), which helps explain why Queen's graduates play a leading role in the senior management of 80 of Northern Ireland's top 100 companies.

As a graduate of the University, you can enjoy a life-long connection to Queen's, and a range of benefits, including:

- Affinity Card, the Queen's MasterCard for alumni
- alumni events on campus and around the world
- careers support
- 'The Graduate' alumni magazine and social networks for staying in touch
- active graduate associations worldwide

EMPLOYABILITY-FOCUSED ACTIVITIES

Queen's has created over 75 of its own spin-out companies, with a combined turnover of over £146 million and the creation of almost 1,700 jobs. The University has significant business connections and collaborates with many multinational enterprises including Petronas, Infosys, Bombardier and Seagate.



"Studying with INTO helped me enjoy university life. I had the opportunity to do an internship which enhanced my CV and enabled me to get my current job."

Yuan Yilin, China



2013 Graduated with **BSc (Hons) Economics with Accounting** from **Queen's University Belfast** and now working as an **Accountant** for the TMF Group in Ireland



Hear more from Yuan Yilin:
www.myin.to/meet-yilin

1ST

for Graduate School

(International Student Barometer 2015)



Discover how we can support you:
www.intostudy.com/queens/support



"Belfast is a beautiful, metropolitan city where you can do more and be more than you ever thought possible. Your academic and personal success is our highest priority and we can help you achieve your goals. Come, be part of something special at INTO Queen's University Belfast."

Eric Fry, Centre Director

98%

of students were satisfied with the support they received

(INTO Exit Survey 2015)



▼ Learning Resource Centre



▼ Excellent IT facilities



▼ Welcome desk



Download the pre-departure guide:
www.intostudy.com/uk/pdg

Your Study Centre

The INTO Centre is on the University campus and has everything you need from modern classrooms to our friendly support team. That's not forgetting our teachers who have many years' experience of helping international students like you to improve their English, adapt to studying in the UK and go on to be successful at university and beyond.

LEARNING FACILITIES

Most of your classes will take place in the Centre. Classrooms have digital whiteboards, which allow your teachers to use online resources, and are designed to encourage interaction and make sure you get involved. Classes mirror university-style teaching with lectures, practical sessions, seminars, tutorials, supported private study and e-learning so you experience university study from the start.

Other facilities include:

- a multipurpose lecture theatre
- Learning Resource Centre
- Café Carberry

E-LEARNING FACILITIES

Throughout your studies you will have access to Queen's Online, the University's virtual learning environment. Use this to download lecture notes and other course content, and join online discussions with your teachers and classmates.

YOUR ATTENDANCE

It is important that you attend all your classes, because missing them will impact on your progress and may also affect your student visa. We carefully monitor attendance and if there is an issue we will work with you to find a solution and get you back into class as soon as possible.

SUPPORT WHEN YOU NEED US

Whenever you want to talk to someone you can go the Centre's welcome desk where you will find friendly staff dedicated to your welfare. This may be the first time you are studying overseas, but we have welcomed thousands of students, so will be able to help you no matter what the problem.

- Orientation programme on student life in Belfast to help you settle in.
- 24-hour emergency telephone number for assistance during out of office hours.
- An airport pickup service to welcome you.
- Language advisers to help students with a low level of English.
- Residential assistants within the residences provide additional support.
- Visa and immigration workshops.
- Make new friends by taking part in our active social programme.
- Dedicated support for students with a disability.

SUPPORT FOR UNDER 18s

Studying overseas is a big step for anyone, but even more so for younger students. If you are under 18 we will meet you at the airport and check in on you each day at the student residence where you will live. For more information on our policies visit www.intostudy.com/queens/terms or request a copy of our Under 18 Policy.

UNIVERSITY SUPPORT

The University also offers a range of services to support you including chaplaincy services, University Health Centre, dedicated student counsellors, the Careers, Employability and Skills Service, and the Disability Services unit.



Take a tour of your Centre:
www.intostudy.com/queens/into-centre



Risk Management and Financial
Regulation | Bolun Lu, China



Aerospace Engineering | Faisal, India



Finance | Uyen Ho, Vietnam



Software and Electronic Systems
Engineering | Febry Fajarmico, Indonesia

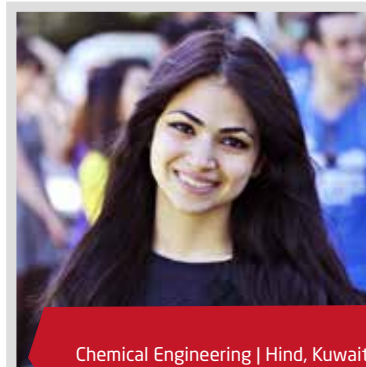


"My life has changed a lot since I
moved to Belfast. It has been one
of the best decisions of my life."

Mechanical Engineering | Shahin, Iran

"I'm really thankful to INTO for
preparing me with the essential
skills and knowledge required
to undertake my postgraduate
degree in the UK."

International Relations | Ratna, Indonesia



Chemical Engineering | Hind, Kuwait



Software and Electrical Engineering
Deborah, Nigeria



Finance | Zaur, Chechnya



Finance | Liu Zijang, China

Celebrating student success

Hundreds of students have already chosen INTO Queen's University Belfast to prepare them for their degree at Queen's University Belfast. The results of some of our star students are below. Are you ready to join them?

NAME OF DEGREE	STUDENT NAME	NATIONALITY	GRADE
International Foundation students at Queen's University Belfast			
Physics with Astrophysics	BAMATOV Dzhabrail	Russia	A*A*A*
Pharmacy	Ogo-Oluwa Iyinoluwa AKINYOSOYE	Nigeria	A*A*A*
Product Design and Development	Eugenie Francine TJENDRA	Indonesia	A*A*A
Actuarial Science and Risk Management	LEUNG Chun Hei	Hong Kong	A*A*A
Architecture	Quadri Abiola OYETUNDE	Nigeria	A*A*A
Actuarial Science and Risk Management	WONG Chia Chi Karen	Malaysia	A*A*A
Accounting	CHENG Xinyu	China	A*A*B
Electrical and Electronic Engineering	Adlan UMALATOV	Russia	A*A*B
Pharmacy	Ali S H S Y ALOBAIDLY	Kuwait	A A A
Law	Victoria Chinyere OKOYE	Nigeria	A A A
Mechanical Engineering	Daberechi Ephraim OKWOR	Nigeria	A A B
International Year One students at Queen's University Belfast			
Software and Electronic Systems Engineering	NGUYEN Minh Nghia	Vietnam	94%
Electrical and Electronic Engineering	LIN Hla Ko	Myanmar	89%
Aerospace Engineering	LIM Mitchell Zhen Hao	Malaysia	87%
Mechanical Engineering	Lev NOVIKOV	Russia	84%
Civil Engineering	Brian TAN	Brunei	81%
Finance	TRAN Thanh Huong	Vietnam	76%
Business Management	ZHANG Liangyu	China	68%
Graduate Diploma students at Queen's University Belfast			
Accounting and Finance	Ji Menglong	China	68%
Marketing	CHEN Sirui	China	60%
Management	FU Yaozong	China	60%

YOUR PROGRESSION GUARANTEE

While you are studying at the Centre, the International Progression Office will offer a wide range of support services. These include assistance with your university application, one-to-one counselling, integration in the University schools, visits to teaching and research facilities, opportunities to meet academics and current students, and attending University lectures. We will do our best to ensure that you are choosing the right degree for you and that the transition from INTO to the University is as smooth as possible.

If you pass the course with the minimum grades and good attendance, but do not achieve the required results to progress to Queen's University Belfast, the Student Placement team is there to advise you on the next steps and to guarantee you a place at a UK university; providing you with peace of mind and ensuring you can remain focused on your studies.

World-class facilities



Queen's campus is one of the best equipped in Europe and includes everything you need, from restaurants to sporting facilities, modern accommodation and its own art house cinema, all designed so your university experience will be the very best.

CULTURE AND ARTS AT QUEEN'S

Queen's University Belfast is proud to be a driving force in Northern Ireland's recent cultural, artistic and economic renaissance, celebrating the innovation and creativity of its people and enhancing its reputation as an international centre of learning. The University is home to:

- the award-winning Naughton Gallery
- the Queen's Film Theatre, Northern Ireland's only art house cinema
- the Seamus Heaney Centre for Poetry
- the Brian Friel Centre for Theatre Research, providing a world-class studio theatre for performing arts students

FIRST-CLASS LIBRARY

The McClay Library brings together wide-ranging library, computing and media services in a single location, blending the best features of a traditional library with the latest technology.

There are over 1.2 million books and journals for you to choose from. You'll also find 2,200 study spaces, including study rooms providing late-night computer access. During the academic year, the library is open 24 hours a day.



2ND

in the UK for
sporting facilities

(International Student
Barometer 2015)



The Physical Education Centre: one of the most advanced sport and fitness facilities in the UK and Ireland

SPECIALIST FACILITIES

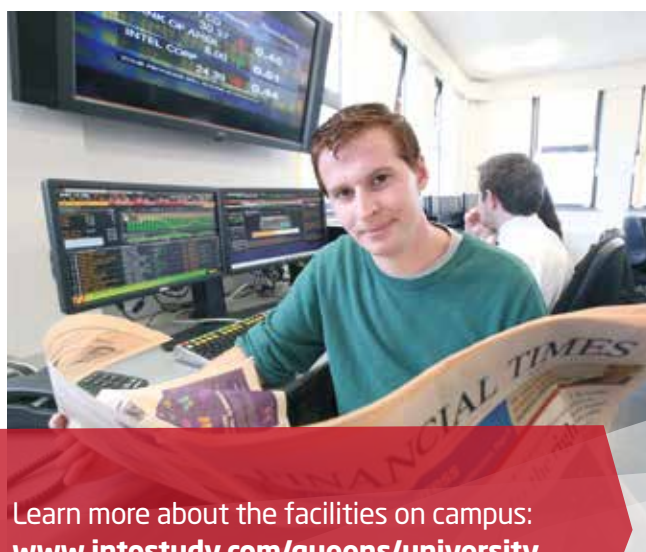
Queen's campus facilities are some of the best in the UK and Ireland, and include specialist facilities, providing you with a unique learning environment:

- First Derivatives Trading Room, with Bloomberg terminals and software used by market professionals in London and New York
- robotics laboratory
- renewable energy laboratory
- virtual reality theatre
- Centre for Cancer Research and Cell Biology
- concert spaces
- music studios
- newly built film studio

▼ Virtual Reality Theatre



▼ First Derivatives Trading Room



Learn more about the facilities on campus:
www.intostudy.com/queens/university



Queen's
Students'
Union

QUEEN'S STUDENTS' UNION

The Students' Union at Queen's brings together a community of more than 17,000 students from over 100 different countries. It already ranks in the top five students' unions in the UK and aims to become number one. In the Students' Union building, you will find:

- The Speakeasy bar and restaurant, offering evening entertainment such as live sport, quizzes and music
- Mandela Hall, hosting concerts, club nights and comedy shows
- Clements Coffee and Café Krem
- The Space, a relax and study area
- An SU shop, book shop and bank

With more than 190 student clubs and societies for you to join, you'll be able to meet friends, discover new talents and take a break from studying. The Union also offers a range of student support services and provides advice on developing business ideas through its Enterprise SU facility.

For more information, visit: www.qubsu.org



QUEEN'S SPORT

The Physical Education Centre (PEC) is one of the most advanced sport and fitness facilities in the UK and Ireland. Here you can play football, hockey, basketball, cricket and racket sports, swim and rock climb. There are also over 50 sports clubs to join.

INTO students enjoy free membership of the PEC for the duration of their study.

For more information, visit: www.queenssport.com

INTERNATIONAL STUDENT SUPPORT

International Student Support can help you with any queries about your visa application prior to coming to the UK, or about extending your current visa in order to study at Queen's. Staff in this office liaise closely with INTO Queen's Admissions to ensure you have the proper documents to be able to study at Queen's.

For more information, visit: www.qub.ac.uk/isso



See student life at INTO on Instagram:
www.instagram.com/intoqueensbelfast



190+ clubs and societies, and
50+ sports clubs for you to join



"Belfast as a UK study destination is a great place to live. It's very student friendly and there is lots to do around campus and in the city centre. I'm really enjoying my student experience here in Northern Ireland."

Ghassan, Sudan



2014 Completed **International Foundation** and progressed to **Aeronautical Engineering** at **Queen's University Belfast**



About Belfast city



Safest region in the UK
(British Crime Survey 2014)

Image courtesy of Visit Belfast

▲ Belfast Waterfront Conference Centre

▼ Victoria Square Shopping Centre



Image courtesy of Visit Belfast

NO.1

city in the UK

(Guardian and Observer Travel Awards 2016)

Belfast is Northern Ireland's capital city. The ultimate student city, Belfast offers a huge selection of places to shop, socialise, eat and relax – all within walking distance of the beautiful University campus. Belfast is safe and quiet, yet buzzing with life and culture.

THE CAMPUS

Queen's campus is surrounded by leafy suburbs, close to the river and parks. It's quiet, calm and safe. Just a 15 minute walk and you will be in the heart of Belfast's busy city centre.

ARTS AND ENTERTAINMENT

- Ulster Hall, Grand Opera House and the Lyric Theatre play host to world-class concerts, musicals, stand-up comedy and theatrical performances.
- Nine cinemas, including the University's own full-time cinema, the Queen's Film Theatre.
- Brand new Metropolitan Arts Centre (The MAC), home to theatres, galleries, dance studio, a café and a bar.
- Find out more about the Titanic, built in Belfast; the Titanic Museum is a must-see visitor attraction.

THE COUNTRY

Northern Ireland's mild climate makes exploring the country possible all year round.

- Discover the dramatic scenery used in the Game of Thrones.
- Enjoy beautiful beaches and stunning coastline such as the world-famous Giant's Causeway.
- Visit Hillsborough Castle, the official residence of the Royal Family when they are in Northern Ireland.
- Northern Ireland was named the safest region in the UK (British Crime Survey 2014).

A SHOPPER'S PARADISE

Belfast offers shoppers a mix of big-name stores, designer boutiques, arts and crafts shops and markets. Several times a year, Queen's hosts food and drink markets around the university's campus. Shopping centres, such as Victoria Square and CastleCourt, offer a wide selection of High Street shops for all tastes and there is also a variety of vintage, charity and low-cost outlets throughout the city.

WORLD CUISINE

From the finest European and world cuisine to Michelin-starred local restaurants and budget cafés, Belfast offers something to suit every taste and budget. Historic pubs, stylish bars and cool clubs help to ensure Belfast lives up to its reputation as one of Europe's most friendly and fashionable regional capitals. For more information, visit Belfast's official tourism websites:

www.gotobelfast.com and www.discovernorthernireland.com

COST OF LIVING

Belfast was named the UK's most affordable student city (NatWest Student Living Index 2015) and Queen's was ranked first for living and accommodation costs (International Student Barometer 2015) making it the ideal location for studies.

Queen's offers you financial incentives to help manage the cost of university fees and to help reduce the cost of living. You should allow £5,500-£7,000 to cover expenses for a full year. Please note this does not take into account funds to support any dependants.

For immigration purposes, non-EU students will be required to show evidence of funds to cover living expenses. The official currency of Northern Ireland is the pound sterling (£). For more information, visit:

www.gov.uk/bringing-cash-into-uk



Discover more about Belfast:
www.intostudy.com/queens/belfast



	ELMS VILLAGE EN SUITE	WILLOW WALK APARTMENTS
En suite bathroom	✓	
Private bedroom	✓	✓
Shared kitchen	✓	✓
Communal areas	✓	✓
Laundry facilities	✓	✓
Wi-Fi access	✓	✓
24/7 support services	✓	✓
On-site staff	✓	✓
Journey time to INTO Centre	10 minute walk	10 minute walk

▼ Shared kitchens and common rooms



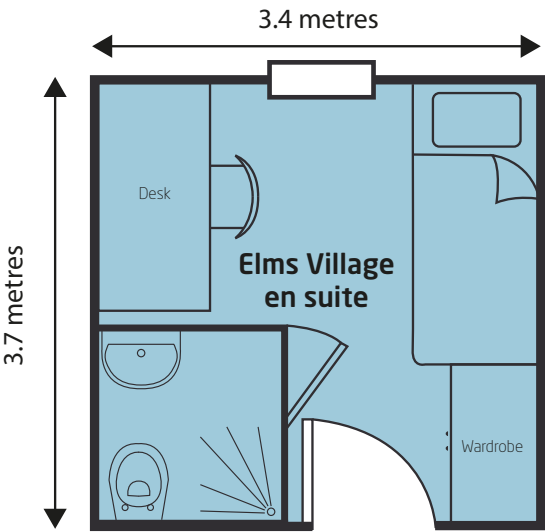
▼ Double bedroom, Willow Walk



▼ En suite study room Elms Village



▼ Shared kitchens, Elms Village



Accommodation size may vary depending on the room you choose



For accommodation prices,
see the dates and prices
section on page 66

Accommodation

At INTO Queen's University Belfast, you can live alongside UK and international students in University residential accommodation. This integrated community is a vibrant environment in which to live and learn.

RESIDENTIAL ACCOMMODATION

Queen's residential accommodation is among the best and most modern in the UK.

Elms Village is in a residential area, a 10 minute walk from both the University and the INTO Centre. The Student Village is a safe environment for you to live, work and socialise.

- Reception desk open 24/7 so you can access help and support whenever you need it.
- 24-hour security on site.
- Social area, The Treehouse, with a restaurant and bar, Wi-Fi, a shop, a lounge area with computers and a laundry.
- High-speed internet service to each bedroom includes Freeview and international television channels available on personal computers*, online game-playing and internet telephone services.

Elms Village en suite rooms

A comfortable, private room which is your space to look after and enjoy. You will have your own private bathroom but share a kitchen and common room, including dining table, soft seating and a television, with the other students on your floor.

Willow Walk apartments

Shared three or four bedroom apartments each with their own front door, facing onto an attractive grass area.

- Modern and comfortably furnished private double bedroom.
- Shared bathroom and kitchen/ common area including a dining table, TV and lounge area.
- Student common area with PCs, Wi-Fi, large flat screen TVs, vending machines and a small kitchenette, where you can make tea or coffee, a great place to relax, study or socialise.

* You can choose to upgrade at any time to gain enhanced features such as more bandwidth or additional television channels. For more information please visit: <http://portal.ask4.com>

WIDE RANGE OF BENEFITS

Living in Queen's accommodation comes with a wide range of benefits:

Privacy - rooms are private spaces to look after and enjoy.

Active social life - there is a lot happening in Elms Village and across campus.

You're in good company - over 2,400 UK and international students live in university residences.

Support - Student Accommodation staff and a Residential Life team are there to help you settle in, organise social events and assist with any problems that may arise.

No hidden extras - rates include utility bills, 24-hour security, 24-hour reception, regular cleaning of communal areas, a television in common rooms and internet service. A bedding pack including a single duvet and cover, pillow and pillow case, a sheet and mattress protector is included for all accommodation.

CATERING

Accommodation is self-catered and credit can be added to your Student Card to pay for snacks and meals in the range of cafés and restaurants around the campus. This is called 'Queen's Easy Pay' and you can also use it to make other purchases such as photocopying and printing.

We recommend that you start with a credit of £200, to purchase meals on campus during the first month, and your parents can add money to this online.



"I would recommend that you live in Elms Village for your first year in Belfast. It's a good way to socialise outside of class and settle into life here."

Mohammad, Malaysia



2015 Graduated with **MEng (Hons)**
Civil Engineering from **Queen's University Belfast**



Learn about student living:
www.intostudy.com/queens/accommodation



A range of academic
programmes to prepare you
for university success

About our courses and application



Flexible English
language courses
year-round



Qualified and
experienced teachers

Choosing your course

INTO Queen's University Belfast offers a wide range of academic programmes and English language courses designed specifically for international students. The courses help to prepare you for entry to Queen's University and adapt to living and studying in a UK university environment.

INTO COURSE	START DATES	ENGLISH LANGUAGE REQUIREMENTS*	LENGTH	PROGRESSION OPTIONS
International Foundation	March, June, September and January	From IELTS 4.0 to IELTS 5.0 depending on course length	3, 4 or 5 terms	Undergraduate degree Year 1
Integrated Programmes: Undergraduate	September and January	IELTS 5.5 (with a minimum of 5.5 in all subskills) or equivalent	3 or 4 years	-
International Year One	March, June, September and January	From IELTS 4.5 to IELTS 5.5 depending on course length	3, 4 or 5 terms	Undergraduate degree Year 2
Graduate Diploma	September and January	IELTS 5.5 (with a minimum of 5.5 in all subskills) or equivalent	3 terms	Postgraduate degree
Graduate Diploma with Pre-sessional English	June and September	IELTS 5.0 (with a minimum of 5.0 in all subskills) or equivalent	4 terms	Postgraduate degree
English for University Study	September, January, April and June	From IELTS 3.0 (with a minimum of 3.0 in writing)	Minimum of one term	Any INTO academic programme or university degree
Pre-sessional English	June, July and August	From IELTS 5.0 to IELTS 6.5 depending on course length and degree course	4, 6 or 10 weeks	University degree

* The above information is only a guide. Depending on the course, in addition to meeting the overall IELTS requirement you may need to achieve specific scores in specified subskills. Please see the relevant course page for full details.

Placement options

Some degrees are available with an additional industrial placement year. See the progression table for the programme you wish to study to check if this is an option for your chosen degree.

MEET YOUR TEACHERS



"At INTO Queen's University Belfast we offer a wide range of high quality academic subject and English Language with study skills courses designed to equip you with all the knowledge and skills you need to embark successfully upon university study."

Dr Brian Webb, **Academic Director**



"The Foundation modules offer excellent preparation for degree programmes, so students develop full knowledge and understanding."

Clare Mulholland, **Tutor of Architecture**



BSc (Hons) Architecture,
MArch Architecture, Queen's University Belfast,
RIBA member
5 years' teaching experience



Meet some of our teachers:
www.intostudy.com/queens/teachers

International Foundation

Prepare for direct entry to a range of undergraduate degrees at Queen's University Belfast. Focusing on developing your academic and undergraduate research skills, as well as improving your English language abilities, the programme covers everything you need in order to progress successfully to the University.

WHAT IS THE INTERNATIONAL FOUNDATION?

- A guaranteed route to Year 1 of an undergraduate degree at Queen's University Belfast, subject to meeting progression requirements.
- A bridging programme that prepares you for a UK degree. The education system in your country may be based on one year less at high school and one year more at university compared to the UK.
- A programme designed to improve your English language skills, increase your knowledge of academic theory, and develop your understanding of key academic subjects.
- An opportunity to develop necessary study and research skills to prepare for undergraduate study.
- A programme to help you adjust to the challenges of UK higher education.

The programme has three pathways:

- Architecture
- Business Humanities and Social Sciences
- Engineering and Science

PROGRAMME BENEFITS

- You are a student of the University from day one.
- A quality-assured university programme.
- A tailor-made programme designed and validated in partnership with Queen's University Belfast.
- A campus-based programme with access to world-class university facilities.
- University-style teaching with high contact hours and small class sizes.
- Qualified and experienced teachers.
- Guaranteed progression to your chosen degree, subject to meeting progression requirements.
- Professional help and support with your application to university.

ACADEMIC SUPPORT

Throughout your programme you will receive advice and feedback from your teachers during seminars and tutorials. You will also have regular one-to-one meetings with your personal tutor where you will discuss your achievements, progress and plan for effective future study. They will be able to answer any questions and provide guidance, to ensure your academic success.

Assessment will be through examinations and coursework including: written assignments, practical exercises, group and individual research projects, presentations and problem-solving exercises.

HOW LONG IS THE PROGRAMME?

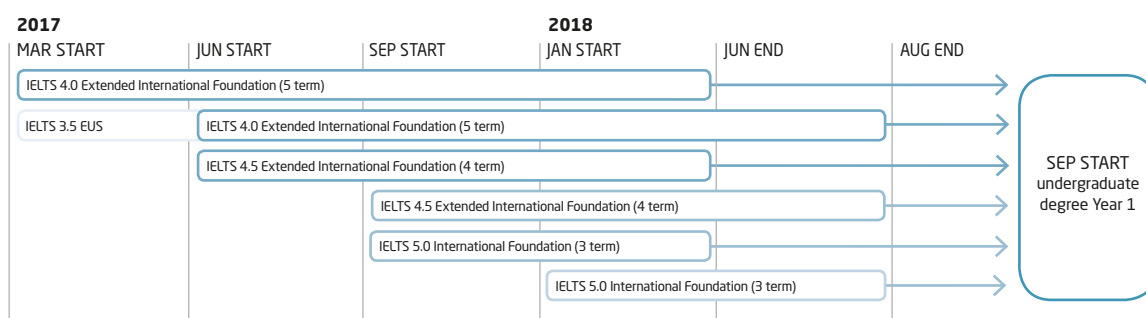
Depending on your English language level the programme lasts three, four or five terms. The Extended International Foundation (four or five terms) incorporates one or two terms of intensive English language, which you will be required to pass before progressing to the next stage of the programme. Examples of the programmes are in the chart below.

SCHOLARSHIPS

Generous scholarships are available, find out more at:

www.intostudy.com/queens/scholarships

YOUR STUDY PLAN



EUS: English for University Study

International Foundation Architecture

- Practical workshops help you to prepare your **art portfolio**
- Progress to Architecture, recognised as Part 1 qualification by **RIBA**
- **1st** in the UK for **student satisfaction** in Architecture (*The Times and The Sunday Times Good University Guide 2016*)
- **11th** in the UK for **Architecture** (*Guardian University Guide 2016*)

CORE MODULES (60 CREDITS)

English Language and Study Skills (30 credits)
Foundation Mathematics for Engineering and Science (30 credits)

SPECIALIST MODULES (60 CREDITS)

Practical Skills for Art Portfolio (30 credits)
Principles of Architectural Design and Practice (30 credits)

See page 36 for module descriptions.

PROGRESSION TO QUEEN'S UNIVERSITY BELFAST

The table below provides detailed information about the academic and English language requirements you need to achieve to progress to a place on two of the most popular degree programmes at Queen's University.*

DEGREE SUBJECT	AWARD	LENGTH OF DEGREE	EAP GRADE	GRADE PROFILE FOR PROGRESSION IN 2018
Architecture	BSc (Hons)	3 years	B overall**	ABB plus GCSE Mathematics grade C or equivalent plus evidence of artistic ability
Planning, Environment and Development			B overall+	BBC plus GCSE Mathematics grade C or equivalent

* In addition to meeting the English language and academic subject requirements to progress to Queen's University Belfast, students must attend and successfully pass an interview with Queen's Faculty academics.

** For progression to Queen's University Belfast, students must achieve a minimum of grade C in Speaking and Listening and grade D in Reading and Writing.

+ For progression to Queen's University Belfast, students must achieve a minimum of grade D in all four components.

TEACHING METHODS

During the Foundation programme, you will be taught by a qualified architect, and receive guidance on your portfolio from the University's School of Architecture. You will make observations of critical reviews of students' work. Weekly informal critiques of work produced in class develop your self-evaluation skills. To enhance your learning experience outside the classroom, there are local field trips and the possibility of field trips to other parts of the UK.

Key facts

Start dates

March, June, September and January

Programme length

3 terms or approximately 9 months
4 terms or approximately 12 months
5 terms or approximately 15 months

Class hours

20 hours per week minimum

Class sizes

Maximum of 16 students per class for English language teaching

Age requirement

16 years and above*

Academic entry requirements

Completion of 12 years of schooling (or the local equivalent to meet the same standard) with good grades. All students must hold a GCSE grade C Mathematics or equivalent.

English language entry requirement

3 term: IELTS 5.0 (with a minimum of 5.0 in writing and no less than 4.5 in all other subskills) or equivalent

4 term: IELTS 4.5 (with a minimum of 4.5 in writing and no less than 4.0 in all other subskills) or equivalent

5 term: IELTS 4.0 (with a minimum of 4.0 in all subskills) or equivalent

If you do not meet the minimum English language requirements you should apply for English for University Study. See page 56 for course details.

If you are applying for a Student Tier 4 visa you must have an IELTS for UKVI to apply for your visa. If you have any questions about this test, our experienced team will be happy to help you. Email your questions to: SELT.Help@intoglobal.com

Award

Successful completion of the International Foundation programme leads to the award of International Foundation Certificate (RQF Level 3) from Queen's University Belfast.

Validating body

Queen's University Belfast

Further guidance

For further guidance please check with the INTO Admissions Office or your local education counsellor.

* All students commencing courses for the September start date must be 16 years old by 01 September of that calendar year. For the June intake for the Extended course, students must be 16 before registering at the Centre. For all other start dates, students must be 16 years old by 01 September of the preceding calendar year. Therefore have turned 17 before 01 September of the year they progress to university.



FOR DATES AND PRICES,
SEE PAGE 66



"My Foundation really prepared me for my degree at university. Not only did it provide me with the academic knowledge, it enabled me to learn and understand the local accent so I can express myself a lot better. I've made a lot of international friends and the teaching staff are really friendly and helpful."

Udeme, Nigeria


2013
Completed International Foundation


2013
Progressed to Architecture at Queen's University Belfast


2016
Graduated with BSc (Hons) Architecture from Queen's University Belfast

My portfolio

Natcha is from Thailand and is studying the International Foundation in Architecture at Queen's University Belfast. She created and developed an outstanding portfolio of work to allow her to apply to study Architecture at university.

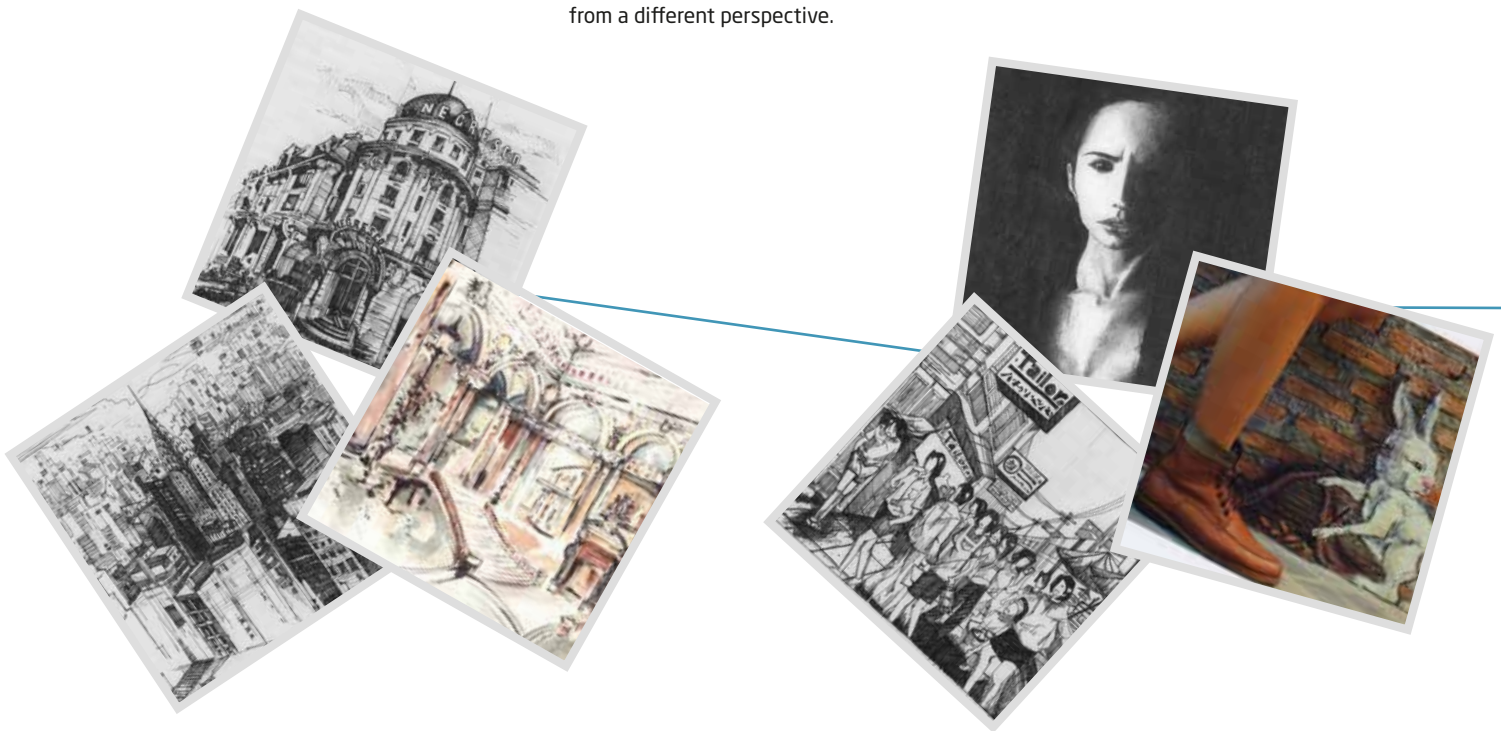
DEVELOPING YOUR PORTFOLIO

An essential requirement to apply for Higher Education courses in Architecture is to have basic artistic and design skills that enable you to engage actively in creative thinking, practice and learning programmes. We offer you guidance on the practical steps to prepare an art portfolio, its content, design and structure.

Practical workshops look at different styles of presentation, drawings and modelling techniques. Weekly critiques during class from peers help encourage you to improve the work you have produced in class.

Field trips around Northern Ireland and the possibility of visiting other cities in the UK will give you the opportunity to review buildings and look at architectural designs from a different perspective.

You will also have the opportunity to develop your portfolio based on what you are taught from being a part of university critiques which RIBA members attend.



STARTING PORTFOLIO Sep 2015

When I first began my programme, it was good to have guidance from a qualified architect on developing my art portfolio for submission to the university.

BUILDING PORTFOLIO CONTENT Nov 2015

During the first semester I had the opportunity to build up my portfolio of drawings while receiving feedback from my peers and my teacher during class. It was good to hear how others perceived my drawings and how I could improve them to the expected standard for university.



"I've had such fun with my teacher and classmates while producing my portfolio. They have helped me build my confidence in my work and see things from a different perspective."

Natcha, Thailand

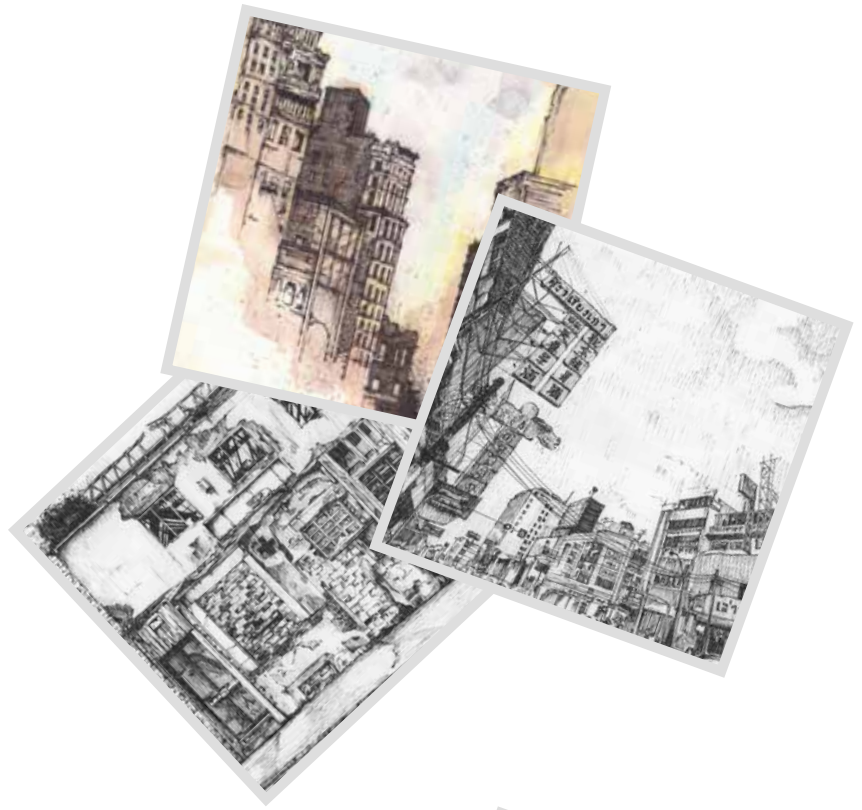


2015 Arrived at **INTO**

Queen's University Belfast

2016 Completed **International Foundation in Architecture**

2016 Received offer to study **Architecture** at **Queen's University Belfast**



RESEARCHING DESIGN PROCESS Jan 2016

The second semester goes into depth in teaching us how we should look at drawings and designs when actually sketching out creations for architectural structures. It taught me to look at buildings from all angles and imagine them at all stages of development.



DESIGN PROCESS: PAVILLION STRUCTURE May 2016

This is when we started to create our final year project which we had researched and drawn out during semester 2. We had the opportunity to go out on site and critique buildings in groups. I learned how to look at buildings from a different perspective. Our models were based on the designs of an inspirational architect of our choice. We were then able to create a mini model based on our designs submitted during semester 2.



To find out more about this course, visit:
www.intostudy.com/queens/courses

International Foundation Business, Humanities and Social Sciences

- Progress to a variety of degrees including **Accounting, Economics, Politics and Law**
- 13th in the UK for its **business school** (*Research Excellence Framework 2014*)
- University graduates have found work with companies such as **PwC, Marks and Spencer, Diageo, Microsoft and Unilever**

CORE MODULES (30 CREDITS)

English Language and Study Skills (30 credits)

SPECIALIST MODULES (90 CREDITS)

Foundation Business Studies (30 credits)
Foundation Economics (30 credits)
Foundation Politics and International Relations (30 credits)
Foundation Mathematics for Business, Humanities and Social Sciences (30 credits)

or

Foundation Mathematics for Engineering and Science (30 credits)**
Further Mathematics for Engineering and Science (30 credits)**

See page 36 for module descriptions.

** If you choose to study Further Mathematics for Engineering and Science you must take Foundation Mathematics for Engineering and Science. Otherwise, if you choose a mathematics module you must study Foundation Mathematics for Business, Humanities and Social Sciences.

TEACHING METHODS

Each academic module is a mix of lectures, tutorials and group work activities. The Business Studies and Economics modules allow you to study real world case studies from the international business environment. You may have to write a business plan to launch a new product or use economic theory to consider the impact of a change in government policy to a particular industry.

The Politics and International Relations module allows you to examine both the history and theory of international relations and apply this knowledge to a range of situations throughout the world, including war, conflict and environmental issues. In Maths, you will benefit from the use of interactive whiteboards on your projects. Previous students have also successfully participated in the Queen's University Maths competition.

During your studies you will benefit from trips to enhance your learning outside of the classroom. Previous trips have included visiting the Northern Ireland Assembly at Stormont and the Law Courts in Belfast.

Key facts

Start dates

March, June, September and January

Programme length

3 terms or approximately 9 months
4 terms or approximately 12 months
5 terms or approximately 15 months

Class hours

20 hours per week minimum

Class sizes

Maximum of 16 students per class for English language teaching

Age requirement

16 years and above*

Academic entry requirements

Completion of 12 years of schooling (or the local equivalent to meet the same standard) with good grades.

English language entry requirement

3 term: IELTS 5.0 (with a minimum of 5.0 in writing and no less than 4.5 in all other subskills) or equivalent

4 term: IELTS 4.5 (with a minimum of 4.5 in writing and no less than 4.0 in all other subskills) or equivalent

5 term: IELTS 4.0 (with a minimum of 4.0 in all subskills) or equivalent

If you do not meet the minimum English language requirements you should apply for English for University Study. See page 56 for course details.

If you are applying for a Student Tier 4 visa you must have an IELTS for UKVI to apply for your visa. If you have any questions about this test, our experienced team will be happy to help you. Email your questions to: SELT.Help@intoglobal.com

Award

Successful completion of the International Foundation programme leads to the award of International Foundation Certificate (RQF Level 3) from Queen's University Belfast

Validating body

Queen's University Belfast

Further guidance

For further guidance please check with the INTO Admissions Office or your local education counsellor.

* All students commencing courses for the September start date must be 16 years old by 01 September of that calendar year. For the June intake for the Extended course, students must be 16 before registering at the Centre. For all other start dates, students must be 16 years old by 01 September of the preceding calendar year. Therefore have turned 17 before 01 September of the year they progress to university.



FOR DATES AND PRICES,
SEE PAGE 66

PROGRESSION TO QUEEN'S UNIVERSITY BELFAST

The table below provides detailed information about the English language requirements and grade profile you need to achieve to be guaranteed a place on some of the most popular degree programmes at Queen's University. If you do not see the course you are interested in, please contact INTO Queen's University Belfast.

DEGREE SUBJECT	AWARD	LENGTH OF DEGREE	INDUSTRIAL PLACEMENT YEAR**	EAP GRADE*	GRADE PROFILE FOR PROGRESSION IN 2018
Accounting, Economics, Management and Finance					
Accounting	BSc (Hons)	3 years	-	B	ABB + GCSE Mathematics grade B or equivalent
Actuarial Science and Risk Management		4 years	✓		AAA including Foundation Mathematics for Engineering and Science and Further Mathematics for Engineering and Science
Business Economics		3 years	-		BBB + GCSE Mathematics grade B or equivalent
Business Management					
Economics					
Economics and Accounting					
Economics with Finance					
Finance		4 years	✓		
Humanities and Social Sciences					
Archaeology	BA (Hons)	3 years	-	B	BBC
Criminology					BBB
Drama					BBC
Film Studies and Production					
History					
International Politics and Conflict Studies					BBB
International Studies and Politics					
Philosophy					BBC
Politics					BBB
Politics, Philosophy and Economics					ABB + GCSE Mathematics grade B or equivalent
Social Anthropology (joint honours)					BBC
Sociology (joint honours)					
Sociology with Quantitative Methods	BSc (Hons)				BBB + GCSE Mathematics grade B or equivalent
Law					
Law	LLB	3 years	-	B	ABB
Law with Politics					

For progression degrees that do not specify particular subject requirements for entry, suitably qualified students may choose to study either the International Foundation in Business, Humanities and Social Sciences or in Engineering and Science.

* For progression to Queen's University Belfast students must achieve a minimum of grade D in each component.

** Students doing an industrial placement year do not need a work permit if the placement is in the UK. Those who do not do the placement are transferred to an equivalent programme without 'with Professional Experience' in the title.

International Foundation Engineering and Science

- Progression options include **Biomedical Science**, **Computer Science**, **Chemistry** and **Pharmacy**
- Five **internationally recognised** research centres in the School of **Chemistry** and **Chemical Engineering**
- Recent University graduates have found employment with international organisations such as **Airbus UK**, **Mercedes Benz** and **Red Bull Technology Ltd**

CORE MODULES (60 CREDITS)

English Language and Study Skills (30 credits)
Foundation Mathematics for Engineering and Science (30 credits)

SPECIALIST MODULES (60 CREDITS)

Foundation Biology (30 credits)
Foundation Chemistry (30 credits)
Foundation Physics (30 credits)
Further Mathematics for Engineering and Science (30 credits)

See page 37 for module descriptions.

TEACHING METHODS

To enhance your learning experience outside the classroom, there are a number of visits and field trips organised during the programme. These have included an Annual Biology Field Trip to an area of outstanding natural beauty in Northern Ireland to carry out ecology investigations; and visiting the Northern Ireland Science Festival.

To allow you to experience university-level facilities, there are compulsory classes in the Engineering labs at Queen's University. During these classes, you will benefit from a range of practical and theoretical work both individually and as part of a group.



"INTO prepares you with all the essential skills required to undertake a degree at university. Since I began studying, my essay writing, speaking and reading skills have really improved."

Annahita, Iran



2013 Arrived at **INTO Queen's University Belfast**
2014 Completed **International Foundation**
2014 Progressed to **Pharmacy** at **Queen's University Belfast**

Key facts

Start dates

March, June, September and January

Programme length

3 terms or approximately 9 months
4 terms or approximately 12 months
5 terms or approximately 15 months

Class hours

20 hours per week minimum

Class sizes

Maximum of 16 students per class for English language teaching

Age requirement

16 years and above*

Academic entry requirements

Completion of 12 years of schooling (or the local equivalent to meet the same standard) with good grades.

English language entry requirement

3 term: IELTS 5.0 (with a minimum of 5.0 in writing and no less than 4.5 in all other subskills) or equivalent

4 term: IELTS 4.5 (with a minimum of 4.5 in writing and no less than 4.0 in all other subskills) or equivalent

5 term: IELTS 4.0 (with a minimum of 4.0 in all subskills) or equivalent

If you do not meet the minimum English language requirements you should apply for English for University Study. See page 56 for course details.

If you are applying for a Student Tier 4 visa you must have an IELTS for UKVI to apply for your visa. If you have any questions about this test, our experienced team will be happy to help you. Email your questions to: SELT.Help@intoglobal.com

Award

Successful completion of the International Foundation programme leads to the award of International Foundation Certificate (RQF Level 3) from Queen's University Belfast

Validating body

Queen's University Belfast

Further guidance

For further guidance please check with the INTO Admissions Office or your local education counsellor.

* All students commencing courses for the September start date must be 16 years old by 01 September of that calendar year. For the June intake for the Extended course, students must be 16 before registering at the Centre. For all other start dates, students must be 16 years old by 01 September of the preceding calendar year. Therefore have turned 17 before 01 September of the year they progress to university.



FOR DATES AND PRICES,
SEE PAGE 66

PROGRESSION TO QUEEN'S UNIVERSITY BELFAST

The table below provides detailed information about the English language requirements and grade profile you need to achieve to be guaranteed a place on some of the most popular degree programmes at Queen's University.

The International Foundation is acceptable for entry to most undergraduate degree programmes at Queen's, with the exception of Agricultural Technology, Medicine, Dentistry, and Social Work.[†]

DEGREE SUBJECT	AWARD	LENGTH OF DEGREE	INDUSTRIAL PLACEMENT YEAR**	EAP GRADE*	GRADE PROFILE FOR PROGRESSION IN 2018*
Biomedical Sciences					
Biomedical Science	BSc (Hons)	3 years	-	B	ABB including Biology or Chemistry (preferably both) + GCSE Biology, Chemistry and Mathematics grade C or equivalent
Human Biology					
Engineering					
Aerospace Engineering	BEng (Hons)	3/4 years	✓	C	BBC (Mathematics and at least one from Physics (preferred), Biology, Chemistry or Further Mathematics) + GCSE Physics grade C or equivalent
	MEng (Hons) ^{†††}	4/5 years			ABB (Mathematics and at least one from Physics (preferred), Biology, Chemistry or Further Mathematics) + GCSE Physics grade B or equivalent
Architecture	BSc (Hons)	3 years	-	B ^{##}	ABB plus evidence of artistic ability + GCSE Mathematics grade C or equivalent
Chemical Engineering	BEng (Hons)	3/4 years	✓	C	B (Mathematics) BC (including at least one from Biology, Chemistry or Physics) + GCSE Chemistry and Physics grade C or equivalent
	MEng (Hons) ^{††}	4/5 years			ABB (Mathematics and at least one from Biology, Chemistry or Physics) + GCSE Chemistry and Physics grade B or equivalent
Civil Engineering	BEng (Hons)	3/4 years			BBC (Mathematics and at least one from Biology, Chemistry, or Physics) + GCSE Physics grade C or equivalent
	MEng (Hons) ^{††}	4/5 years			AB (Mathematics and at least one from Biology, Chemistry or Physics) B, and GCSE Physics grade B or equivalent
Electrical and Electronic Engineering	BEng (Hons)	3/4 years			BBC (Mathematics and at least one from Physics (preferred), Biology, Chemistry or Further Mathematics) and GCSE Physics grade C or equivalent
	MEng (Hons) ^{††}	4/5 years			ABB (Mathematics and at least one from Physics (preferred), Biology, Chemistry or Further Mathematics) and GCSE Physics grade B or equivalent
Environmental and Civil Engineering					AB (Mathematics and at least one from Biology, Chemistry or Physics) B, and GCSE Physics grade B or equivalent
European Planning	MPlan	4 years			-
Mechanical Engineering	BEng (Hons)	3/4 years	✓	C	BBC (Mathematics and at least one from Physics (preferred), Biology, Chemistry or Further Mathematics) and GCSE Physics grade C or equivalent
	MEng (Hons) ^{†††}	4/5 years			ABB (Mathematics and at least one from Physics (preferred), Biology, Chemistry or Further Mathematics) and GCSE Physics grade B or equivalent
Planning, Environment and Development	BSc (Hons)	3 years	-	B	BBC+ GCSE Mathematics grade C or equivalent
Product Design Engineering	BEng (Hons)	3/4 years	✓	C	BBC (Mathematics and at least one from Physics (preferred), Biology, Chemistry or Further Mathematics) or B (Mathematics) BC, and GCSE Physics grade C or equivalent
	MEng (Hons) ^{†††}	4/5 years			ABB (Mathematics and at least one from Physics (preferred), Biology, Chemistry or Further Mathematics) and GCSE Physics grade B or equivalent

DEGREE SUBJECT	AWARD	LENGTH OF DEGREE	INDUSTRIAL PLACEMENT YEAR**	EAP GRADE*	GRADE PROFILE FOR PROGRESSION IN 2018*
Engineering (Continued)					
Software and Electronic Systems Engineering	BEng (Hons)	3/4 years	✓	C	BBC (Mathematics and at least one from Physics, Biology, Chemistry or Further Mathematics) and GCSE Physics grade C or equivalent
	MEng (Hons) ^{††}	4/5 years			ABB (Mathematics and at least one from Physics, Biology, Chemistry or Further Mathematics) and GCSE Physics grade B or equivalent
Structural Engineering with Architecture					AB (Mathematics and at least one from Biology, Chemistry or Physics) B, and GCSE Physics grade B or equivalent
Mathematics and Computing					
Business Information Technology	BSc (Hons)	3/4 years	✓	B	BBB + GCSE Mathematics grade C or equivalent
Computer Science	BEng (Hons)	3/4 years		C	BBC including Mathematics or BBB including Physics or Chemistry + GCSE Mathematics grade C or equivalent
	BSc (Hons)	3/4 years			ABB including Mathematics or AAB including Physics or Chemistry + GCSE Mathematics grade C or equivalent
	MEng (Hons) ^{††}	4/5 years	ABB including Mathematics or AAB including Physics or Chemistry + GCSE Mathematics grade C or equivalent		
Computing and Information Technology	BSc (Hons)	3/4 years	-	C	BBB/BBC (depending on subjects offered) + GCSE Mathematics grade C or equivalent
Mathematics	BSc (Hons)	3 years			A (Mathematics) BC
	MSci (Hons)	4 years			A (Mathematics) AB
Mathematics and Computer Science	BSc (Hons)	3 years	-	C	A (Mathematics) BC
	MSci (Hons)	4 years			
Mathematics with Finance	BSc (Hons)	3 years			A (Mathematics) AB
Software Engineering	BEng (Hons)	3/4 years	✓		BBC including Mathematics or BBB including Physics or Chemistry + GCSE Mathematics grade C or equivalent
	MEng (Hons) ^{††}	4/5 years			ABB including Mathematics or AAB including Physics or Chemistry + GCSE Mathematics grade C or equivalent
Nursing and Midwifery [†]					
Midwifery Sciences	BSc (Hons)	3 years	-	A [§]	CCC including Biology or Chemistry or Mathematics or Physics + 5 GCSE subjects at grade B or equivalent, including Mathematics and a Science subject (Chemistry, Physics or Biology)
Nursing (Adult)					CCC including Biology or Chemistry or Mathematics or Physics + 5 GCSE subjects at grade C or equivalent, including Mathematics and a Science subject (Chemistry, Physics or Biology) - grade B preferred
Nursing (Children's)					
Nursing (Learning Disability)					
Nursing (Mental Health)					
Science					
Applied Mathematics and Physics	BSc (Hons)	3 years	-	C	A (Mathematics) B (Physics) C
	MSci (Hons)	4 years			A (Mathematics) AB (including Physics)
Archaeology		3 years	-	B	ABB + GCSE Mathematics grade C or equivalent
Archaeology-Palaeoecology		3 years			BBC + GCSE Mathematics grade C or equivalent
Biochemistry	BSc (Hons)	3/4 years	✓		BBB including Chemistry and at least one from Biology (preferred), Mathematics or Physics + GCSE Biology and Mathematics grade C or equivalent
Biological Sciences		3/4 years			BBB including Biology and preferably Chemistry + GCSE Chemistry and Mathematics grade C or equivalent
	MSci (Hons)	4/5 years			ABB including Biology and preferably Chemistry + GCSE Chemistry and Mathematics grade C or equivalent
Chemistry	BSc (Hons)	3/4 years	✓	C	B (Chemistry) BC including a second Science subject + GCSE Mathematics grade C or equivalent
	MSci (Hons) ^{††}	4 years	-		ABB including Chemistry and a second Science subject + GCSE Mathematics grade C or equivalent

DEGREE SUBJECT	AWARD	LENGTH OF DEGREE	INDUSTRIAL PLACEMENT YEAR**	EAP GRADE*	GRADE PROFILE FOR PROGRESSION IN 2018*	
Science (Continued)						
Environmental Management	BSc (Hons)	3/4 years	✓	B	BBB + GCSE Mathematics grade C or equivalent	
Food Science and Food Security	MSci (Hons)	4/5years			ABB including Biology or Chemistry (preferably both) + GCSE Biology, Chemistry and Mathematics grade C or equivalent	
Food Quality, Safety and Nutrition	BSc (Hons)	3/4 years			BBB including Biology or Chemistry (preferably both) + GCSE Biology, Chemistry and Mathematics grade C or equivalent	
	MSci (Hons)	4/5 years			ABB including Biology or Chemistry (preferably both) + GCSE Biology, Chemistry and Mathematics grade C or equivalent	
Geography		3 years	-		BBC + GCSE Mathematics grade C or equivalent	
Marine Biology	BSc (Hons)	3/4 years	-		BBB including Biology and preferably Chemistry + GCSE Chemistry and Mathematics grade C or equivalent	
	MSci (Hons)	4/5 years			ABB including Biology and preferably Chemistry + GCSE Chemistry and Mathematics grade C or equivalent	
Medicinal Chemistry	BSc (Hons) **	3/4 years		✓	C	B (Chemistry) BC including a second Science subject + GCSE Mathematics grade C or equivalent
	MSci (Hons)††	4 years				ABB including Chemistry and a second Science subject + GCSE Mathematics grade C or equivalent
Microbiology	BSc (Hons)	3/4 years	-	B	BBB including Biology and preferably Chemistry + GCSE Chemistry grade B + GCSE Mathematics grade C or equivalent	
	MSci (Hons)	4 years			ABB including Biology and preferably Chemistry + GCSE Chemistry grade B + GCSE Mathematics grade C or equivalent	
Pharmaceutical Sciences	BSc (Hons)	3 years		B#		BBB including Chemistry and at least one from Biology (preferred), Mathematics or Physics + GCSE Biology and Mathematics at grade C or equivalent
Pharmacy	MPharm (Hons)	4 years			AAB including Chemistry and two from Biology (preferably), Mathematics or Physics + GCSE Biology and Mathematics grade C or equivalent	
Physics	BSc (Hons)	3 years	-	C	BB (Mathematics and Physics) C	
	MSci (Hons)	4 years			ABB (Mathematics and Physics)	
Physics with Astrophysics	BSc (Hons)	3 years			BB (Mathematics and Physics) C	
	MSci (Hons)	4 years			ABB (Mathematics and Physics)	
Physics with Medical Applications	BSc (Hons)	3 years		B	BB (Mathematics and Physics) C	
	MSci (Hons)	4 years			ABB (Mathematics and Physics)	
Psychology	BSc (Hons)	3 years	C		BBB + GCSE Mathematics grade C or equivalent	
Theoretical Physics	BSc (Hons)	3 years		A (Mathematics) B (Physics) C		
	MSci (Hons)	4 years		A (Mathematics) AB (including Physics)		
Zoology	BSc (Hons)	3/4 years	✓	B	BBB including Biology and preferably Chemistry + GCSE Chemistry and Mathematics grade C or equivalent	
	MSci (Hons)	4/5 years			ABB including Biology and preferably Chemistry + GCSE Chemistry and Mathematics grade C or equivalent	

* For progression to Queen's University Belfast students must achieve a minimum of grade D in each component.

** Students doing an industrial placement year do not need a work permit if the placement is in the UK. Those who do not do the placement are transferred to an equivalent programme without 'with Professional Experience' in the title.

†† MSci (Hons) Chemistry and MSci (Hons) Medicinal Chemistry are available with a Professional Studies option. Each degree programme is four years, and includes an industrial placement and a distance learning element.

For progression to Queen's University Belfast students must achieve a minimum of grade C in each component.

For progression to Queen's University Belfast students must achieve a minimum of grade C in Speaking and Listening and grade D in Reading and Writing.

† For progression degrees that do not specify particular subject requirements for entry, suitably qualified students may choose to study either the International Foundation in Business, Humanities and Social Sciences or in Engineering and Science.

†† Master's of Engineering (MEng) is a flagship programme and students must maintain a high standard throughout their degree. At the end of Year 2 students entering an MEng programme must have a minimum average of 55%. Students who fail to achieve this may be required to transfer to a Bachelor of Engineering (BEng). Similarly, a BEng student with a 55% average or better may transfer to an MEng programme at the end of Year 2. Students on the MEng will need to pass all of their modules and maintain a high standard in Years 3 and 4 to graduate.

††† Master's of Engineering (MEng) is a flagship programme and students must maintain a high standard throughout their degree. At the end of Year 1, students entering an MEng programme must have a minimum average of 60%, with passes in all Stage 1 modules, and 60% in specified analytical modules. Students who fail to achieve this will be required to transfer to a Bachelor of Engineering (BEng). Similarly, a BEng student with a 60% average or better with passes in all Stage 1 modules and an average of 60% in analytical modules, may be considered for transfer to an MEng at the end of Year 1. Students enrolled on the MEng will need to pass all of their modules and maintain a high standard in Years 2, 3 and 4 to graduate.

‡ Progression to Midwifery Sciences and Nursing cannot be guaranteed. Progression will depend on the availability of placements and will be based on the normal selection criteria used by the School of Nursing and Midwifery. All applicants are required to have an overall EAP grade A, with grade A in each test component.

§ For progression to Queen's University Belfast students must achieve grade A in each component.

MODULE DESCRIPTIONS

Detailed descriptions of the core and specialist modules for the International Foundation are below.

ARCHITECTURE

C English Language and Study Skills

Designed to help you develop your independent study skills and confidence in academic English in preparation for university study and develop the four key areas of competence - reading, writing, listening and speaking - with a particular emphasis on high-level academic writing skills.

The module material is integrated with the material you will study in your subject modules. You will learn techniques for listening to lectures, taking notes, delivering presentations, summarising and paraphrasing. You will be introduced to a variety of academic writing modes and learn about academic conventions such as referencing.

C Foundation Mathematics for Engineering and Science

Mathematics provides the means to describe and analyse the principles that underpin most natural and man-made processes, in particular those processes studied by scientists, engineers and parts of the business community. This module assumes an elementary background in mathematical concepts and skills and introduces you to some of the important mathematical concepts and tools used in science and engineering. You will cover topics such as: linear equations and matrices; quadratic equations; expansions, sequences and series; indices; functions and transformations; differential and integral calculus; trigonometric identities; vectors; numerical methods and an introduction to statistics.

S Practical Skills for Art Portfolio

An essential requirement to apply for Higher Education courses in Architecture is to have basic artistic and design skills that enable you to engage actively in creative thinking, practice and learning programmes. The module offers you guidance on the practical steps to prepare an art portfolio, its content, design and structure. This module includes practical workshops on different styles of presentation, drawings and modelling techniques.

S Principles of Architectural Design and Practice

Architecture is a profession-driven subject that involves skills and knowledge that span different fields of art, science, engineering and technology. This module is designed to help you gain a basic understanding and practise the principles of architecture as a design practice with creative processes and as a profession with technical and standard regulations and procedures. It is taught by professionally trained architects and tutors who lead a series of lectures, exercises and critical readings in architecture.

BUSINESS, HUMANITIES AND SOCIAL SCIENCES

C English Language and Study Skills

Designed to help you develop your independent study skills and confidence in academic English in preparation for university study and develop the four key areas of competence - reading, writing, listening and speaking - with a particular emphasis on high-level academic writing skills.

The module material is integrated with the material you will study in your subject modules. You will learn techniques for listening to lectures, taking notes, delivering presentations, summarising and paraphrasing. You will be introduced to a variety of academic writing modes and learn about academic conventions such as referencing.

S Foundation Business Studies

Designed to provide you with a basic understanding of the key features of business and management and the standard conduct of business in the UK. You will study models of management and the external environment in which UK businesses operate and will be introduced to a range of key concepts in areas such as marketing, leadership, organisation structure, accounting and finance, human resource management and corporate strategy.

S Foundation Economics

Learn about the main theoretical models and concepts used in macro and microeconomics and their application in the study of 'real world' economic situations. You will develop an ability to think like an economist and become familiar with the use of diagrams to convey economic concepts. The topics you will study include: the economic environment; the market mechanism; market structure and competition; growth; inflation; unemployment; international trade and macroeconomic policy.

S Foundation Politics and International Relations

Designed to help you develop a critical awareness of the relationships and interactions between nation states and the function, operation and evolution of transnational organisations such as the United Nations, the European Union and the International Criminal Court. The module will provide a historical context and introduce you to theories of world politics. It will explore processes and concepts such as international political economy, global security, the environment and nationalism, war and peace, and human rights.

S Foundation Mathematics for Business, Humanities and Social Sciences

This module introduces a range of mathematical and statistical techniques that have broad application in business, humanities and social science disciplines. You will study key mathematical concepts and notations, learn to manipulate numerical and algebraic expressions and be introduced to the basic techniques of statistics, probability and set theory. You will also study topics in differential and integral calculus, trigonometry, correlation, linear regression and time series analysis. By the end of the module, you will be adept at handling, summarising, representing and interpreting data relevant to the fields of business, humanities and the social sciences.

S Foundation Mathematics for Engineering and Science

Mathematics provides the means to describe and analyse the principles that underpin most natural and man-made processes, in particular those processes studied by scientists, engineers and parts of the business community. This module assumes an elementary background in mathematical concepts and skills and introduces you to some of the important mathematical concepts and tools used in science and engineering. You will cover topics such as: linear equations and matrices; quadratic equations; expansions, sequences and series; indices; functions and transformations; differential and integral calculus; trigonometric identities; vectors; numerical methods and an introduction to statistics.

S Further Mathematics for Engineering and Science

Gain a deeper understanding and stronger background in areas of mathematics required in engineering and some science-based disciplines. You will study a range of topics which complement and extend those studied in the Foundation Mathematics module including: coordinate geometry; exponentials; further differential and integral calculus; complex numbers; statistics and probability theory. The application of mathematical concepts and models to problems in engineering and science will be emphasised throughout the module.

ENGINEERING AND SCIENCE

C English Language and Study Skills

Designed to help you develop your independent study skills and confidence in academic English in preparation for university study and develop the four key areas of competence – reading, writing, listening and speaking – with a particular emphasis on high-level academic writing skills. The module material is integrated with the material you will study in your subject modules. You will learn techniques for listening to lectures, taking notes, delivering presentations, summarising and paraphrasing. You will be introduced to a variety of academic writing modes and learn about academic conventions such as referencing.

C Foundation Mathematics for Engineering and Science

Mathematics provides the means to describe and analyse the principles that underpin most natural and man-made processes, in particular those processes studied by scientists, engineers and parts of the business community. This module assumes an elementary background in mathematical concepts and skills and introduces you to some of the important mathematical concepts and tools used in science and engineering. You will cover topics such as: linear equations and matrices; quadratic equations; expansions, sequences and series; indices; functions and transformations; differential and integral calculus; trigonometric identities; vectors; numerical methods and an introduction to statistics.

S Foundation Biology

Develop your understanding of biological structures and processes and consider different levels of organisation in living systems from sub-cellular to cellular to organism and systems level. Life processes are studied to show fundamental similarities between living things and you will study topics such as: cellular structure and energy generation; classification; reproduction and development of living organisms; DNA replication and cell division; molecular genetics and the genetics of inheritance; evolution; human physiology; plant biology and ecology and diversity. This module includes laboratory and project work designed to complement your theoretical studies.

S Foundation Chemistry

This module assumes a basic background in chemistry and is designed to develop your understanding of chemical principles and processes required for studying at degree level in the physical sciences, engineering or biological sciences. You will develop an understanding of the concepts of physical, inorganic and organic chemistry and study topics such as: basic atomic and molecular structure; classification of organic compounds and their reactions; energy; enthalpy and dynamic equilibria; reaction kinetics; the properties of gases and liquids; and the impact of chemistry on society, the economy and the environment. This module includes laboratory and project work designed to complement your theoretical studies.

S Foundation Physics

Building on your existing knowledge of physics, this module will provide an introduction to the fundamental concepts and mathematics of physical science that are required for studying physical sciences and engineering courses at degree level. You will study topics in mechanics, materials, structures, electrical and electromagnetic fields and develop an understanding of the interrelationship between atomic structure and the properties of matter and how to apply these concepts to the analysis of mechanical, electrical and thermal problems.

S Further Mathematics for Engineering and Science

Gain a deeper understanding and stronger background in areas of mathematics required in engineering and some science-based disciplines. You will study a range of topics which complement and extend those studied in the Foundation Mathematics module including: coordinate geometry; exponentials; further differential and integral calculus; complex numbers; statistics and probability theory. The application of mathematical concepts and models to problems in engineering and science will be emphasised throughout the module.



“One of my best memories has to be winning the Shaw Memorial Prize during the second year of my degree. I was the best performing student in the Business Economics class.”

Franklin, Nigeria



2011 Completed
International Foundation
2014 Graduated with **BSc (Hons)**
Business Economics from **Queen's University Belfast**
2016 Now working as **Director of Operations** for **Best Petroleum Nigeria Ltd**

Integrated Programmes

Undergraduate[†]

Queen's University Belfast is delighted to introduce a range of three-year programmes combining International Year One with a complete undergraduate degree – allowing you to complete your studies in a single programme.

WHAT IS AN INTEGRATED UNDERGRADUATE DEGREE?

- An undergraduate degree which fully integrates the International Year One at INTO Queen's into the degree programme.
- Improve your English language skills.
- Study a range of undergraduate engineering degrees.
- Develop the necessary study and research skills to ease your transition to the British education system.

PROGRAMME BENEFITS

- A university-validated programme.
- Full university status from day one of your programme with full access to university facilities.
- High contact hours and smaller class sizes throughout your first year of study.
- A single programme of study, meaning you can apply for one visa for the full duration of your programme.
- A degree level programme - meaning we can accept a wide range of English language tests and qualifications for admission.

WHAT IF I NEED TO IMPROVE MY ENGLISH LEVEL?

If you do not meet the minimum English language requirements for direct entry, you should apply for English for University Study or the International Year One in Engineering. For more information, please visit: www.intostudy.com/queens/courses

WHY CHOOSE QUEEN'S UNIVERSITY BELFAST?

- A Russell Group university and the 9th oldest university in the UK.
- A choice of industry-accredited degrees with opportunities to undertake an industrial placement.
- 7th in the UK for Electrical and Electronic Engineering (The Times and The Sunday Times Good University Guide 2017).
- Top 15 in the UK for Aeronautical and Manufacturing Engineering, and Civil Engineering (The Times and The Sunday Times Good University Guide 2017).
- Top 200 in the world for Chemical Engineering (QS World University Rankings by Subject 2016).

ACADEMIC SUPPORT

Throughout your programme you will receive advice and feedback from your teachers during seminars and tutorials. You will have regular one-to-one tutorial meetings with your personal tutor where you will discuss your achievements, progress and plan for effective future study. They will be able to answer any questions and provide guidance, to ensure your academic success.

Assessment is through examinations and coursework including: written assignments, practical exercises, group and individual research projects, presentations and problem-solving exercises.

SCHOLARSHIPS

Generous scholarships are available, find out more at: www.intostudy.com/queens/scholarships

Key facts

Programme dates

Integrated Programme: Undergraduate Year One

Mon 18 Sep 2017-Fri 08 Jun 2018

Mon 08 Jan 2018-Fri 24 Aug 2018

Programme length

Full-time 3 years

4 years if you transfer to a MEng degree or include a sandwich year.

Age requirement

16 years and above*

Academic entry requirements

Two 'D' grades from any UK A-level board, successful completion of a recognised Foundation programme or first year of an overseas university degree programme or equivalent with good grades.

All students will be expected to have studied mathematics and preferably physics at this level.

Student wishing to study Chemical Engineering will require previous study in Chemistry.

English language entry requirements

IELTS 5.5 (with a minimum of 5.5 in all subskills) or equivalent acceptable to the University.

Please note that in addition to the UKVI IELTS, INTO is able to accept other English language qualifications. For more information on accepted qualifications please see:

www.intostudy.com/self-alternatives

Validating body

Queen's University Belfast

Further guidance

For further guidance please check with the INTO Admissions Office or your education counsellor.

* All students commencing courses for the September start date must be 17 years old by 31 December of that calendar year. For all other start dates, students must be 17 years old on the published start date.



FOR DATES AND PRICES,
SEE PAGE 66

[†] subject to final approval

YOUR CHOICE OF UNDERGRADUATE DEGREES AT QUEEN'S UNIVERSITY BELFAST

The following table provides information about the degrees available at Queen's University Belfast that are offered as an integrated programme with an International Year One, and the modules that you must study in order to continue to Year 2 of the programme.

DEGREE	CORE MODULES (40 CREDITS)			SPECIALIST MODULES (80 CREDITS - ALL MODULES ARE 10 CREDITS)																							
	English Language and Study Skills (20 credits)	Engineering Mathematics 1 (10 credits)	Engineering Mathematics 2 (10 credits)	Aerospace Principles	Basic Chemistry 1	Basic Chemistry 2	Computer Programming	Communications	Circuit Principles 1	Circuit Principles 2	Civil Engineering Materials	Drawing and Design	Digital Systems Design	Dynamics	Electrical and Electronic Engineering	Electronic Materials and Devices	Energy Transport and Conversion	Engineering Design and Practice	Fluid Mechanics	Geotechnics	Heat and Mass Transfer	Introduction to Chemical Engineering	Materials and Manufacture	Mechanical Principles	Structure and Stress Analysis	Surveying	Thermodynamics
Aerospace Engineering BEng (Hons)	●	●	●	●								●		●					●				●	●	●		●
Chemical Engineering BEng (Hons)	●	●	●		●	●						●							●	●	●	●	●				●
Civil Engineering BEng (Hons)	●	●	●								●	●							●	●			●	●	●	●	
Computer Science BEng (Hons)	●	●	●				●	●	●	●			●			●	●	●									
Electrical and Electronic Engineering BEng (Hons)	●	●	●				●	●	●	●			●			●	●	●									
Mechanical Engineering BEng (Hons)	●	●	●									●		●	●				●				●	●	●		●
Product Design Engineering BEng (Hons)	●	●	●									●		●	●				●				●	●	●		●

• Semester 1 • Semester 2

See page 47-49 for module descriptions for Year 1 of the programme.

CONTINUING YOUR STUDIES

You must achieve a minimum average of 60% overall and passes in all ten modules in the first year of the programme, as well as Grade C with a minimum of grade D in each component in English Language and Study Skills module, in order to progress to Year 2 of the programme.

TRANSFERRING TO MASTER OF ENGINEERING

All students will automatically be enrolled on the BEng (Hons) degree programme. The option to transfer between BEng and MEng or to include a sandwich year will be possible subject to UKVI regulations. Staff within the University will guide you through the transfer of programmes.

INDUSTRIAL PLACEMENTS

You may have the opportunity to undertake a 12-month work experience placement between year 2 and the final year of your degree. This is an amazing opportunity to gain real world engineering experience and improve your technical and professional skills. The placement is optional for all degrees. You will be required to find your own placements, however most schools have a placement office to support and assist you through the process.

International Year One

Prepare for direct entry to the second year of a range of undergraduate degrees at Queen's University Belfast. Focusing on developing your academic and undergraduate research skills, as well as improving your English language abilities, the programme covers everything you need in order to progress successfully to the University.

WHAT IS INTERNATIONAL YEAR ONE?

- A guaranteed route to Year 2 of an undergraduate degree at Queen's University Belfast, subject to meeting progression requirements.
- A programme enabling you to complete a degree in three/four years, the same amount of time as direct entry.
- A programme designed to improve your English language skills, increase your knowledge of academic theory, and develop your understanding of key academic subjects.
- An opportunity to develop necessary study and research skills to prepare for undergraduate study.
- A programme to help you adjust to the challenges of UK higher education.
- Successful completion leads to the initial award of the International Diploma (FHEQ Level 4) from Queen's University Belfast.

The programme has three pathways:

- Accounting
- Engineering
- Management and Finance

PROGRAMME BENEFITS

- You are a student of the University from day one.
- A quality-assured university programme.
- A tailor-made programme designed and validated in partnership with Queen's University Belfast.
- A campus-based programme with access to world-class university facilities.
- University-style teaching with high contact hours and small class sizes.
- Qualified and experienced teachers.
- Guaranteed progression to your chosen degree, subject to meeting progression requirements.
- Professional help and support with your application to university.

ACADEMIC SUPPORT

Throughout your programme you will receive advice and feedback from your teachers during seminars and tutorials. You will also have regular one-to-one meetings with your personal tutor where you will discuss your achievements, progress and plan for effective future study. They will be able to answer any questions and provide guidance, to ensure your academic success.

Assessment will be through examinations and coursework including: written assignments, practical exercises, group and individual research projects, presentations and problem-solving exercises.

HOW LONG IS THE PROGRAMME?

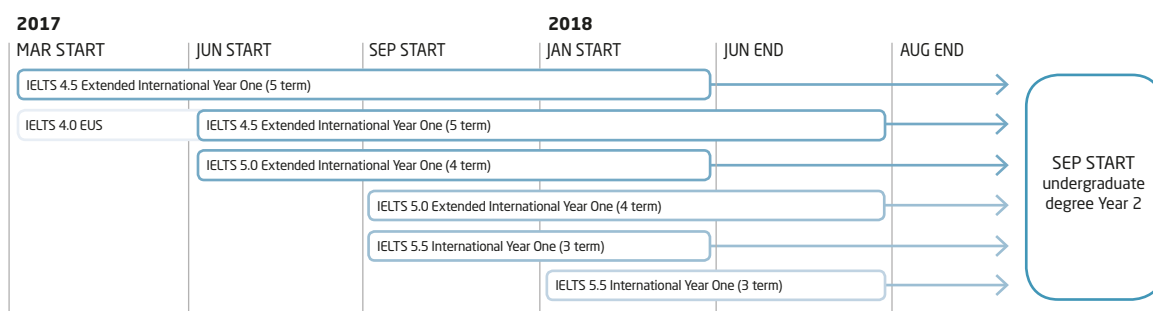
Depending on your English language level the programme lasts three, four or five terms. The Extended International Year One (four or five terms) incorporates one or two terms of intensive English language, which you will be required to pass before progressing to the next stage of the programme. Examples of the programmes are in the chart below.

SCHOLARSHIPS

Generous scholarships are available, find out more at:

www.intostudy.com/queens/scholarships

YOUR STUDY PLAN



International Year One Accounting

- Progress to BSc (Hons) Accounting at Queen's University Belfast, which allows the **maximum nine exemptions** from **ACCA**
- 3rd** in the UK for **Accounting and Finance** (*The Times and The Sunday Times Good University Guide 2016*)
- Discuss **placement** and **graduate opportunities** with accountancy firms and professional bodies at the annual **Accounting Mini Fair**

CORE MODULES (20 CREDITS)

English Language and Study Skills (20 credits)

SPECIALIST MODULES (100 CREDITS)

Mathematics and Statistics for Business (20 credits)
Introduction to Financial Accounting (20 credits)
Introduction to Management Accounting (20 credits)
Principles of Economics (20 credits)
Accounting Information Systems (10 credits)
Introduction to Legal Study and Basic Contract Law (10 credits)

See page 47 for module descriptions.

TEACHING METHODS

This programme offers a mixture of lectures and small group teaching sessions, in which you will work closely with experienced and qualified teachers to develop academic and Accounting-specific skills. You will have the opportunity to learn how to use a computerised accounting software, write statistics and financial reports, improve your presentation skills, and expand your subject-specific vocabulary.

PROGRESSION TO QUEEN'S UNIVERSITY BELFAST

If you successfully complete the International Year One in Accounting and meet the specified progression requirements for entry to your selected degree (as detailed in the table below), you will be guaranteed entry to the second year of two undergraduate degree programmes at Queen's University Belfast.

If you successfully complete the International Year One in Accounting, but do not meet the specified progression requirements for entry to Year 2, you will be considered for entry to Year 1 of a suitable degree programme at Queen's University Belfast.

DEGREE SUBJECT	AWARD	LENGTH OF DEGREE	EAP GRADE	GRADE PROFILE FOR PROGRESSION IN 2018
Accounting	BSc (Hons)	3 years	Grade B with a minimum of grade D in each component	50% overall average in academic modules. A minimum of 50% in Mathematics and Statistics for Business; Introduction to Financial Accounting; Introduction to Management Accounting; and Introduction to Legal Study and Basic Contract Law
Economics and Accounting		2 years		

Key facts

Start dates

March, June, September and January

Programme length

3 terms or approximately 9 months
4 terms or approximately 12 months
5 terms or approximately 15 months

Class hours

Usually 25 hours per week

Class sizes

Maximum of 16 students per class for English language teaching

Age requirement

16 years and above*

Academic entry requirements

Two 'D' grades from a UK A-level board, a recognised foundation, first year of an overseas university degree programme or equivalent with good grades. All students must hold a GCSE grade B in Mathematics or equivalent.

English language entry requirement

3 term: IELTS 5.5 (with a minimum of 5.5 in reading and writing and no less than 5.0 in all other subskills) or equivalent

4 term: IELTS 5.0 (with a minimum of 5.0 in reading and writing and no less than 4.5 in all other subskills) or equivalent

5 term: IELTS 4.5 (with a minimum of 4.5 in all subskills) or equivalent

If you do not meet the minimum English language requirements you should apply for English for University Study. See page 56 for course details.

If you are applying for a Student Tier 4 visa you must have an IELTS for UKVI to apply for your visa. If you have any questions about this test, our experienced team will be happy to help you. Email your questions to: SELT.Help@intglobal.com

Award

Successful completion of International Year One leads to the initial award of International Diploma (FHEQ Level 4) from Queen's University Belfast

Validating body

Queen's University Belfast

Further guidance

For further guidance please check with the INTO Admissions Office or your local education counsellor.

* All students commencing courses for the September start date must be 17 years old by 31 December of that calendar year. For all other start dates, students must be 17 years old on the published start date of the course.



FOR DATES AND PRICES,
SEE PAGE 66

International Year One Engineering

- Progress to a range of **industry-accredited degrees**, and choose from a 3-year BEng and a 4-year MEng degree, with the MEng offering a faster route to Chartered Engineer status
- **Top 10** in the UK for **Engineering** (*Guardian University Guide 2016*)
- **5th** in the UK for research in **Electrical and Electronic Engineering** (*Research Excellence Framework 2014*)
- **5th** in the UK for **Chemical Engineering** (*Guardian University Guide 2016*)

AEROSPACE ENGINEERING (120 CREDITS) (E1)

Core modules (40 credits)	Specialist modules (80 credits)
English Language and Study Skills (20 credits) Engineering Mathematics 1 (10 credits) Engineering Mathematics 2 (10 credits)	Semester 1 Aerospace Principles (10 credits) Drawing and Design (10 credits) Fluid Mechanics (10 credits) Mechanical Principles (10 credits) Semester 2 Dynamics (10 credits) Materials and Manufacture (10 credits) Structure and Stress Analysis (10 credits) Thermodynamics (10 credits)

See page 47-49 for module descriptions for this pathway.



"The International Year One gave me a sense of good work ethic, teaching me how to meet assignment deadlines and work under pressure."

Rehman, Pakistan



2013 Completed **International Year One**
2015 Graduated with **MEng (Hons) Mechanical Engineering** from **Queen's University Belfast**
2016 Now working as an intern **Engineer** at Packages PVT Ltd in Pakistan

Key facts

Start dates

March, June, September and January

Programme length

3 terms or approximately 9 months
 4 terms or approximately 12 months
 5 terms or approximately 15 months

Class hours

Usually 24 hours per week

Class sizes

Maximum of 16 students per class for English language teaching

Age requirement

16 years and above*

Academic entry requirements

Two 'D' grades from a UK A-level board, a recognised foundation, first year of an overseas university degree programme or equivalent with good grades. Students will be expected to have studied mathematics and preferably physics at this level.

Students wishing to study Chemical Engineering will require previous study in Chemistry.

English language entry requirement

3 term: IELTS 5.5 (with a minimum of 5.5 in writing and no less than 5.0 in all other subskills) or equivalent

4 term: IELTS 5.0 (with a minimum of 5.0 in writing and no less than 4.5 in all other subskills) or equivalent

5 term: IELTS 4.5 (with a minimum of 4.5 in all subskills) or equivalent

If you do not meet the minimum English language requirements you should apply for English for University Study. See page 56 for course details.

If you are applying for a Student Tier 4 visa you must have an IELTS for UKVI to apply for your visa. If you have any questions about this test, our experienced team will be happy to help you. Email your questions to: SELT.Help@intoglobal.com

Award

Successful completion of International Year One leads to the initial award of International Diploma (FHEQ Level 4) from Queen's University Belfast

Validating body

Queen's University Belfast

Further guidance

For further guidance please check with the INTO Admissions Office or your local education counsellor.

* All students commencing courses for the September start date must be 17 years old by 31 December of that calendar year. For all other start dates, students must be 17 years old on the published start date of the course.



FOR DATES AND PRICES,
SEE PAGE 66

CHEMICAL ENGINEERING (120 CREDITS) (E2)

Core modules (40 credits)	Specialist modules (80 credits)	
English Language and Study Skills (20 credits) Engineering Mathematics 1 (10 credits) Engineering Mathematics 2 (10 credits)	Semester 1 Drawing and Design (10 credits) Fluid Mechanics (10 credits) Heat and Mass Transfer (10 credits) Introduction to Chemical Engineering (10 credits)	Semester 2 Basic Chemistry 1 (10 credits) Basic Chemistry 2 (10 credits) Materials and Manufacture (10 credits) Thermodynamics (10 credits)

CIVIL ENGINEERING (120 CREDITS) (E3)

Core modules (40 credits)	Specialist modules (80 credits)	
English Language and Study Skills (20 credits) Engineering Mathematics 1 (10 credits) Engineering Mathematics 2 (10 credits)	Semester 1 Drawing and Design (10 credits) Fluid Mechanics (10 credits) Geotechnics (10 credits) Mechanical Principles (10 credits)	Semester 2 Civil Engineering Materials (10 credits) Materials and Manufacture (10 credits) Structure and Stress Analysis (10 credits) Surveying (10 credits)

ELECTRICAL AND ELECTRONIC ENGINEERING (120 CREDITS) (E4)

Core modules (40 credits)	Specialist modules (80 credits)	
English Language and Study Skills (20 credits) Engineering Mathematics 1 (10 credits) Engineering Mathematics 2 (10 credits)	Semester 1 Circuit Principles 1 (10 credits) Computer Programming (10 credits) Electronic Materials and Devices (10 credits) Engineering Design and Practice (10 credits)	Semester 2 Circuit Principles 2 (10 credits) Communications (10 credits) Digital System Design (10 credits) Energy Transport and Conversion (10 credits)

MECHANICAL AND MANUFACTURING ENGINEERING (120 CREDITS) (E5)

Core modules (40 credits)	Specialist modules (80 credits)	
English Language and Study Skills (20 credits) Engineering Mathematics 1 (10 credits) Engineering Mathematics 2 (10 credits)	Semester 1 Drawing and Design (10 credits) Electrical and Electronic Engineering (10 credits) Fluid Mechanics (10 credits) Mechanical Principles (10 credits)	Semester 2 Dynamics (10 credits) Materials and Manufacture (10 credits) Structure and Stress Analysis (10 credits) Thermodynamics (10 credits)

See page 47–49 for module descriptions for these pathways.

TEACHING METHODS

The International Year One Engineering offers smaller classes than university study, providing you with a greater student/teacher interaction. All staff teaching are qualified to doctorate level.

You will gain experience in using industry standard computer aided design and simulation tools. You will be given the opportunity to work in the University's labs, using state-of-the-art practical equipment, and undertake practical work both inside and outside of class.



"INTO provides students with a great environment to adapt to the UK education system and the International Year One programme allows students to go straight to year two at Queen's."

Tang Chun Yin, Hong Kong



2013 Completed **International Year One**
2015 Graduated with **BEng (Hons) Mechanical Engineering**
 from **Queen's University Belfast** with First Class Honours
2016 Now working as an **Assistant Engineer** at the
Jardine Engineering Corporation in Hong Kong

PROGRESSION TO QUEEN'S UNIVERSITY BELFAST

If you successfully complete the International Year One in Engineering and meet the specified progression requirements for entry to your selected degree (as detailed in the table below), you will be guaranteed entry to the second year of a suitable undergraduate degree programme at Queen's University Belfast.

PROGRAMME TITLE	AWARD	LENGTH OF DEGREE	INDUSTRIAL PLACEMENT YEAR*	ELSS GRADE	GRADE PROFILE FOR PROGRESSION IN 2018
Aerospace Engineering	BEng (Hons)	2/3 years	✓	Grade C with a minimum of grade D in each component	A pass with Commendation with a minimum average of 60% and passes in all 10 modules
	MEng (Hons) ^f	3/4 years			A pass with High Commendation with a minimum average of 70% and passes in all 10 modules
Chemical Engineering	BEng (Hons)	2/3 years			A pass with Commendation with minimum average of 60% and passes in all 10 modules
	MEng (Hons) ^f	3/4 years			A pass with High Commendation with a minimum average of 70% and passes in all 10 modules
Civil Engineering	BEng (Hons)	2/3 years			A pass with Commendation with a minimum average of 60% and passes in all 10 modules
	MEng (Hons) ^f	3/4 years			A pass with High Commendation with a minimum average of 70% and passes in all 10 modules.
Computer Science	BEng (Hons)	2/3 years			A pass with Commendation with a minimum average of 60% and passes in all 10 modules
	MEng (Hons) ^f *	3/4 years			A pass with High Commendation with a minimum average of 70% and passes in all 10 modules
Computing and Information Technology	BSc (Hons)	3 years**			A pass with Commendation with a minimum average of 60% and passes in all 10 modules
Electrical and Electronic Engineering	BEng (Hons)	2/3 years			A pass with Commendation with a minimum average of 60% and passes in all 10 modules
	MEng (Hons) ^f	3/4 years			A pass with High Commendation with a minimum average of 70% and passes in all 10 modules
Environmental and Civil Engineering					A pass with High Commendation with a minimum average of 70% and passes in all 10 modules
Mechanical Engineering	BEng (Hons)	2/3 years			A pass with Commendation with a minimum average of 60% and passes in all 10 modules
	MEng (Hons) ^f	3/4 years			A pass with High Commendation with a minimum average of 70% and passes in all 10 modules
Product Design Engineering	BEng (Hons)	2/3 years			A pass with Commendation with a minimum average of 60% and passes in all 10 modules
	MEng (Hons) ^f	3/4 years			A pass with High Commendation with a minimum average of 70% and passes in all 10 modules
Software Engineering	BEng (Hons)	2/3 years			A pass with Commendation with a minimum average of 60% and passes in all 10 modules
	MEng (Hons) ^f	3/4 years			A pass with High Commendation with a minimum average of 70% and passes in all 10 modules
Software and Electronic Systems Engineering	BEng (Hons)	2/3 years			A pass with Commendation with a minimum average of 60% and passes in all 10 modules
	MEng (Hons) ^f	3/4 years			A pass with High Commendation with a minimum average of 70% and passes in all 10 modules

* Students doing an industrial placement year do not need a work permit if the placement is in the UK. Those who do not do the placement are transferred to an equivalent programme without 'with Professional Experience' in the title.

** Includes mandatory industrial placement year.

^f Students enrolled on the MEng will need to pass all their modules and maintain a high standard in Years 2, 3 and 4 to graduate from the programme. Students who fail to achieve necessary grades may be required to transfer to a Bachelor of Engineering (BEng) programme.

International Year One Management and Finance

- Progress to degrees including **Business Management, Economics and Finance**
- **13th** in the UK for its **business school** (*Research Excellence Framework 2014*)
- **3rd** in the UK for **Accounting and Finance** (*The Times and The Sunday Times Good University Guide 2016*)

CORE MODULES (110 CREDITS)

English Language and Study Skills (20 credits)
Financial Institutions and Markets (20 credits)
Introduction to Financial and Management Accounting (10 credits)
Mathematics and Statistics for Business (20 credits)
Management and Organisations: Theory and Practice (20 credits)
Principles of Economics (20 credits)

SPECIALIST MODULES (10 CREDITS)

Mathematics for Finance and Economics (10 credits)*
or
The Business Environment (10 credits)**

See page 49 for module descriptions.

* This module is compulsory for students intending to progress to degrees in Finance and Economics.

** This module is compulsory for students intending to progress to degrees in Business.

TEACHING METHODS

This programme provides you with a wide range of academic methods and approaches, from expository lectures to tutorial sessions, in which you learn to analyse business case studies and discuss current economic affairs. Upon completion of the programme, you will be equipped with key academic and professional skills, such as business report writing, presentation techniques and data analysis. Our interdisciplinary curriculum integrates English and Management and Finance modules to improve your language competency alongside subject-specific skills.



"The first year at INTO helps you build a good foundation of language as well as providing you with the required subject knowledge."

Haojie Mao, China



2013 Completed **International Year One**
2015 Graduated with **BSc (Hons) Business Management** from **Queen's University Belfast**
2016 Now studying **Construction and Project Management** at **Queen's University Belfast**

Key facts

Start dates

March, June, September and January

Programme length

3 terms or approximately 9 months
4 terms or approximately 12 months
5 terms or approximately 15 months

Class hours

Usually 25 hours per week

Class sizes

Maximum of 16 students per class for English language teaching

Age requirement

16 years and above*

Academic entry requirements

Two 'D' grades from a UK A-level board, a recognised foundation, first year of an overseas university degree programme or equivalent with good grades. All students must hold a GCSE grade C in maths or equivalent.

English language entry requirement

3 term: IELTS 5.5 (with a minimum of 5.5 in reading and writing and no other subskill below 5.0) or equivalent

4 term: IELTS 5.0 (with a minimum of 5.0 in reading and writing and no other subskill below 4.5) or equivalent

5 term: IELTS 4.5 (with a minimum of 4.5 in all subskills) or equivalent

If you do not meet the minimum English language requirements you should apply for English for University Study. See page 56 for course details.

If you are applying for a Student Tier 4 visa you must have an IELTS for UKVI to apply for your visa. If you have any questions about this test, our experienced team will be happy to help you. Email your questions to: SELT.Help@intoglobal.com

Award

Successful completion of International Year One leads to the initial award of International Diploma (FHEQ Level 4) from Queen's University Belfast

Validating body

Queen's University Belfast

Further guidance

For further guidance please check with the INTO Admissions Office or your local education counsellor.

* All students commencing courses for the September start date must be 17 years old by 31 December of that calendar year. For all other start dates, students must be 17 years old on the published start date of the course.



FOR DATES AND PRICES,
SEE PAGE 66

PROGRESSION TO QUEEN'S UNIVERSITY BELFAST

If you successfully complete the International Year One in Management and Finance and meet the specified progression requirements for entry to your selected degree (as detailed in the table below), you will be guaranteed entry to the second year of five undergraduate degree programmes at Queen's Management School.

If you successfully complete the International Year One in Management and Finance, but do not meet the specified progression requirements for entry to Year 2, you will be considered for entry to Year 1 of a suitable degree programme in Queen's Management School.

DEGREE SUBJECT	AWARD	LENGTH OF DEGREE	INDUSTRIAL PLACEMENT YEAR*	EAP GRADE	GRADE PROFILE FOR PROGRESSION IN 2018*
Business Economics	BSc (Hons)	2 years	-	Grade B with a minimum of grade D in each component	50% overall average in academic modules. A minimum of 50% in Principles of Economics; Management and Organisation: Theory and Practice; and The Business Environment
Business Management					
Economics					
Economics with Finance					
Finance		3 years	✓		50% overall average in academic modules. A minimum of 50% in Principles of Economics; Financial Institutions and Markets; and Mathematics for Finance and Economics

* Programmes are normally offered with a placement year option. Students undertaking a year of professional experience (placement year) do not need a work permit as long as the placement is in the UK.



"Lecturers at INTO use university-style teaching methods to ensure we are mentally prepared for university. They keep in mind we are international students and take the time to ensure knowledge is not lost in translation."

Guleena, Pakistan



2014 Completed **International Year One**
2014 Progressed to **Business Economics**
 at **Queen's University Belfast**
2016 Graduated with **BSc (Hons) Business Economics**
 from **Queen's University Belfast**

MODULE DESCRIPTIONS

Detailed descriptions of the core and specialist modules for the International Year One are below.

ACCOUNTING

C English Language and Study Skills

This module will give you the language proficiency and academic study skills you will need to embark on the second year of an undergraduate course in a UK university. Language and study skills are incorporated into all aspects of the International Year One programme and this module is designed to support the academic modules.

S Accounting Information Systems

This module looks at how accountants must take a proactive role in obtaining and interpreting financial and non-financial information about an organisation's activities. You will look at roles such as understanding, developing, maintaining and improving accounting information systems. The module analyses the basic components of accounting information systems and examines how information technology affects the nature of business in general and accounting in particular.

S Introduction to Financial Accounting

This module provides a foundation in the theory and practice of financial accounting. You will be introduced to the importance of financial accounting in terms of its definition, role and key concepts. You will learn about double-entry bookkeeping and the preparation of basic financial statements. You will also explore the control mechanisms that are prevalent in all accounting systems, such as bank reconciliations and examine different types of business entity and their accounting mechanisms.

S Introduction to Legal Study and Basic Contract Law

This module provides an introduction to the system of law in effect in Northern Ireland, as well as providing an understanding of the main principles of contract law such as contracts for the sale of goods, consumer credit contracts and contracts of employment. You will also examine commercial law such as the law of agency, the banker/customer relationship and the employer/employee relationship. You will look at issues of liability for negligence in tort, concentrating on the potential liability of accountants for professional negligence and issues such as health and safety legislation and industry specific legislation.

S Introduction to Management Accounting

You will explore how management accounting identifies, measures and communicates information to permit management and employees in an organisation to make informed judgements and decisions. The module examines the provision of both financial and non-financial information. You will also study the role of management accounting systems within the wider context of organisational information systems and problem solving with techniques such as short-term costing decisions, uncertainty and limited resource constraints, long-term capital expenditure decisions and budgeting.

S Mathematics and Statistics for Business

In this module you will learn to apply mathematical and statistical methods to business data and gain knowledge and understanding of the basic tools used to solve a range of practical problems in business. You will study basic project planning techniques using network analysis and consider a number of mathematical and statistical concepts including linear and non-linear functions, single variable calculus, data presentation, descriptive and inferential statistics, regression analysis, time series and elementary probability theory.

S Principles of Economics

This introductory economics module is designed to provide you with an understanding of fundamental economic theory and equip you with a real understanding of the role of economics in business, public and private decision-making. You will be taught how to apply the theory to analysis of the real world, gain an understanding of the functioning of markets as the foundation of the contemporary global economy and study the relationship between the main microeconomic principles and essential macroeconomic concepts.

ENGINEERING

C English Language and Study Skills (E1, E2, E3, E4, E5)

This module will give you the language proficiency and academic study skills you will need to embark on the second year of an undergraduate course in a UK university. Language and study skills are incorporated into all aspects of the International Year One programme and this module is designed to support the academic modules.

C Engineering Mathematics 1 (E1, E2, E3, E4, E5)

Mathematics is a fundamental discipline underpinning many areas of engineering. The purpose of this module is to provide you with a sound basis in engineering-related mathematics such that you can deal with the wide range of modules that involve analytical methods. In Engineering Mathematics 1, you will learn how to approach problems and construct models involving differentiation and integration, including differential equations. You will develop the skills to interpret the models and offer practical solutions and learn how to use determinants to help analyse and solve problems.

C Engineering Mathematics 2 (E1, E2, E3, E4, E5)

In Engineering Mathematics 2, you will learn how to approach problems involving matrices and the associated algebra including the use of Eigenvalues and Eigenvectors to help analyse and solve problems. You will learn how to construct differential equations and use a variety of methods including Laplace transforms to solve the equations.

S Aerospace Principles (E1)

This module introduces the basic principles of flight and the environment in which an aircraft operates. By the end of the module, you should be able to describe the function of the main aircraft components, describe how lift and drag forces arise, understand the main forces in straight and level flight and analyse mathematically longitudinal stability and control of a fixed wing aircraft.

S Basic Chemistry 1 (E2)

You will become familiar with chemical descriptions of matter, what matter is made up of, how it can be organised into the periodic table and how we can start to understand it from a scientific perspective. You will learn about organic compounds and how they can be prepared, named and reacted. You will also acquire basic organic chemistry laboratory skills.

S Basic Chemistry 2 (E2)

You will become familiar with basic chemical thermodynamics and kinetics. By the end of the course, you will have an improved knowledge and understanding of equilibrium constants, acid/base chemistry, states of matter and phase changes, basic phase equilibria and chemical kinetics driven by increased problem solving abilities.

ENGINEERING *continued***S Circuit Principles 1 (E4)**

The module introduces the basic elements and components of electrical and electronic circuits. By the end of the module, you should be able to explain the parameters and concepts underpinning electric circuits, recall the relationships between the parameters and carry out calculations to analyse circuits with DC sources.

S Circuit Principles 2 (E4)

The module extends the study completed in Circuit Principles 1 to introduce the analysis of electrical and electronic circuits with AC sources. By the end of the modules, you should be able to use complex notation and phasors to represent circuit parameters and to perform calculations with equations representing their relationships.

S Civil Engineering Materials (E3)

The aim of this module is to provide you with basic understanding of states of stress and strain and of the mechanical behaviour of materials. You will undertake materials testing in the Heavy Structures, and learn about constituents, properties and behaviour of a range of civil engineering materials such as concrete, steel and timber.

S Communications (E4)

This module introduces the basic elements of communications systems through transmission lines, optical fibre and radio channels. Sampling and quantisation to create basic digital signal representations will be presented and you will learn about analogue and digital modulation techniques and gain an appreciation of the impact of noise on communications performance.

S Computer Programming (E4)

This module introduces computer programming concepts. Programming skills are extensively practised. By the end of the module, you should have an understanding of the key elements of C programming and know how to create, compile and run programs. You should be able to understand and use data types, conditional statements, loops, arrays, strings, pointers and files and how to utilise the various mathematical operators and standard libraries' functions.

S Digital System Design (E4)

This module introduces the principles of digital logic and combinational and sequential digital circuit design. You will be able to manipulate logic expressions using Boolean algebra and both analyse and synthesise combinational and sequential logic circuits and also become aware of practical implementation issues.

S Drawing and Design (E1, E2, E3, E5)

In this module you will be introduced to the design process and learn to apply the principles of good design to the creation of appropriate artefacts in simple design exercises. You will be given the opportunity to use the first class computer suites at Queen's to undertake drawing exercises in 2D and 3D using computer software including AutoCAD and SolidWORKS. You will learn how to draw engineering diagrams following standard conventions, use a computer-aided design (CAD) system to develop engineering drawings of components and assemblies and derive information from engineering drawings.

S Dynamics (E1, E5)

The aim of the module is to introduce you to the theory and principles of dynamics and their application to engineering mechanics. By the end of the module, you should be able to recall and apply Newton's laws of motion, use mathematical models to analyse the behaviour of simple mechanical systems and use the theory and principles of dynamics to carry out simple calculations.

S Electrical and Electronic Engineering (E5)

The module introduces the fundamental concepts of Electrical and Electronic Engineering and explains the operation of simple circuit elements and components in electrical and electronic systems. By the end of the module you will be able to understand and apply mathematical, scientific and engineering principles and tools to the analysis, synthesis, performance assessment, critical appraisal and evaluation of electrical and electronic engineering processes and systems.

S Electronic Materials and Devices (E4)

The module introduces the properties of the most important materials used in electronic and electrical engineering. By the end of the module, you should be able to describe the basic structure and operation of common semiconductor devices and components using dielectric materials and magnetic materials.

S Energy Transport and Conversion (E4)

In this module, you will explore the generation of electricity from both conventional fossil fuels and renewable sources such as wind, solar and hydro. The principle of electromagnetic induction is introduced and the analysis of practical generators and motors described. The production, transmission and distribution and basic analysis of three-phase systems are also introduced.

S Engineering Design and Practice (E4)

In this module you will be introduced to the product development life cycle and the use of project management tools and techniques in the development of engineering products. You will construct and test circuits using prototyping techniques, computer-aided design (CAD) and simulation software packages and understand the importance of clear documentation and communication, health and safety guidelines, copyright laws and ethics applied to the use of IT systems.

S Fluid Mechanics (E1, E2, E3, E5)

The module provides an introduction to the principles of fluid mechanics and their relevance in the field of engineering. By the end of the module, you should be able to understand the basic properties of fluids and their mechanics under static and dynamic conditions and apply the principles of conservation of mass, momentum and energy in engineering applications.

S Geotechnics (E3)

The aim of the module is to introduce you to soils as engineering materials. By the end of the module, you will be able to describe the formation of soils and rocks, describe the principle of effective stress, Mohr-Coulomb criteria, consolidation and permeability properties of soils and lateral earth pressure in retaining walls. You will also undertake soil classifications and particle size analysis labs in the Queen's Soil Testing Labs.

S Heat and Mass Transfer (E2)

You will develop competencies in chemical engineering through an understanding of the design of heat exchange systems. You will develop understanding of mass transfer and its application in chemical engineering unit operations. You will also acquire heat and mass transfer laboratory skills and an appreciation of the fundamentals of mass transfer in chemical engineering design through the application of the concepts of heat transfer and design to heat transfer systems.

C Core module**S** Specialist module**International Year One key:**

E1 Aerospace Engineering
E2 Chemical Engineering

E3 Civil Engineering
E4 Electrical and Electronic Engineering

E5 Mechanical and Manufacturing Engineering

MODULE DESCRIPTIONS

Detailed descriptions of the core and specialist modules for the International Year One are below.

ENGINEERING *continued*

S Introduction to Chemical Engineering (E2)

You will develop competencies in chemical engineering through a basic understanding of the design of chemical engineering plant. You will develop competence in the understanding of process and units selection, mass and energy balances and basic economics for the chemical industry. The importance of multi-disciplinarity in new process and product design will be highlighted.

S Materials and Manufacture (E1, E2, E3, E5)

The module will allow you to develop an understanding of the importance of materials science. You will learn about material structure and how this affects material properties. You will learn about different material test methods, and be able to select materials for different applications. You will also gain knowledge of the main manufacturing processes used in engineering.

S Mechanical Principles (E1, E3, E5)

This module provides you with the theoretical and practical knowledge necessary to analyse the behaviour of simple mechanical systems subjected to the action of various forces and to determine the effects of loading in a range of static engineering systems.

S Structure and Stress Analysis (E1, E3, E5)

This module covers mathematical models to analyse the behaviour of simple mechanical systems. You will be able to use the theory and principles of statics to carry out simple calculations, describe the fundamentals of stress analysis and their applications in engineering and solve problems involving stresses and strains in engineering materials. You will have the ability to predict the strength of a basic structural system and apply appropriate material and sections to a basic structural system in order to render the structure safe to operate.

S Surveying (E3)

The aim of this module is to provide students with the skills and techniques required to produce large-scale plans of engineering sites. This module is very interactive and hands on. You will use University surveying equipment and work in groups to produce a contoured plan of an area. You will learn about levelling and its applications, theodolites, traverse, stadia and contouring.

S Thermodynamics (E1, E2, E5)

This module provides an elementary introduction to thermodynamics, including a discussion of the fundamental concepts of heat, work, energy and entropy. The module introduces the properties of different working fluids (vapours and gases) and also provides the necessary analytical skills to address practical and theoretical issues arising from the analysis of thermodynamic machinery.

MANAGEMENT AND FINANCE

C English Language and Study Skills

This module will give you the language proficiency and academic study skills you will need to embark on the second year of an undergraduate course in a UK university. Language and study skills are incorporated into all aspects of the International Year One programme and this module is designed to support the academic modules.

C Financial Institutions and Markets

This module is designed to provide you with an understanding of the economic functions and workings of financial institutions and markets and of the financial intermediation process. You will study topics such as the theory of money, monetary union, the theory of financial intermediation, the structure and operation of the Central Bank, banking regulation, other non-bank financial intermediaries and an introduction to the stock, bond and money markets.

C Introduction to Financial and Management Accounting

This module provides a foundation in the theory and practice of financial and management accounting. You will be introduced to the main accounting statements: The Income Statement, The Statement of Financial Position and The Statement of Cash Flows. You will learn how to carry out a basic analysis of these financial statements and how to write financial reports. The module also includes an introduction to the use of management accounting information for decision-making.

C Mathematics and Statistics for Business

In this module you will learn to apply mathematical and statistical methods to business data and gain knowledge and understanding of the basic tools used to solve a range of practical problems in business. You will study basic project planning techniques using network analysis and consider a number of mathematical and statistical concepts including linear and non-linear functions, single variable calculus, data presentation, descriptive and inferential statistics, regression analysis, time series and elementary probability theory.

C Management and Organisations: Theory and Practice

This module will introduce you to the study of management and organisation theory. It has been designed to provide you with an understanding of the historical foundations of management thought and of the functions of management in the modern work environment. The module will also introduce the concept of organisation behaviour and will consider a range of interrelated and interdependent topics including individual differences, group behaviour, organisational culture, structure, motivation and leadership.

C Principles of Economics

This introductory economics module is designed to provide you with an understanding of fundamental economic theory and equip you with a real understanding of the role of economics in business, public and private decision-making. You will be taught how to apply the theory to analysis of the real world, gain an understanding of the functioning of markets as the foundation of the contemporary global economy and study the relationship between the main microeconomic principles and essential macroeconomic concepts.

S Mathematics for Finance and Economics

This module is specifically designed for students intending to progress to degree programmes in finance and economics. The material will complement and build upon that covered in the Mathematics and Statistics for Business module and will include topics on matrix algebra, further differential and integral calculus and unconstrained and constrained optimisations. The course is taught with emphasis on the application of the mathematical techniques to solve real world problems in finance and economics. This module is compulsory if you intend to progress to degrees in Finance and Economics.

S The Business Environment

This module is specifically designed for students intending to progress to degree programmes in Business Management. It emphasises the increasing complexity and interdependence of the world economy and introduces students to key factors in the external environment (PESTLE) in which modern organisations operate. The aim is to reflect on the continuous need for national and international organisations to scan their external environment for opportunities and threats facing their business. This module is compulsory if you intend to progress to degrees in Business.

Graduate Diploma

Prepare for direct entry to a range of postgraduate degrees at Queen's University Belfast. Focusing on developing your academic and postgraduate research skills, as well as improving your English language abilities, the programme covers everything you need in order to progress successfully to the University.

WHAT IS THE GRADUATE DIPLOMA?

- A guaranteed route to a postgraduate degree at Queen's University Belfast, subject to meeting progression requirements.
- A programme designed to improve your English language skills, increase your knowledge of academic theory, and develop your understanding of the key postgraduate academic subjects.
- An opportunity to develop the necessary study and research skills to prepare for postgraduate study.
- A programme to help you adjust to the challenges of UK higher education.

The programme has two pathways:

- Finance
- Management

PROGRAMME BENEFITS

- You are a student of the University from day one.
- A quality-assured university programme.
- A tailor-made programme designed and validated in partnership with Queen's University Belfast.
- University-style teaching with high contact hours and small class sizes.
- Qualified and experienced teachers.
- Guaranteed progression to your chosen postgraduate degree, subject to meeting progression requirements.
- Professional help and support with your application to university.
- Intensive English language tuition.

ACADEMIC SUPPORT

Throughout your programme you will receive advice and feedback from your teachers during seminars and tutorials. You will also have regular one-to-one meetings with your personal tutor where you will discuss your achievements, progress and plan for effective future study. They will be able to answer any questions and provide guidance, to ensure your academic success.

Assessment will be through examinations and coursework including: written assignments, practical exercises, group and individual research projects, presentations and problem-solving exercises.

HOW LONG IS THE PROGRAMME?

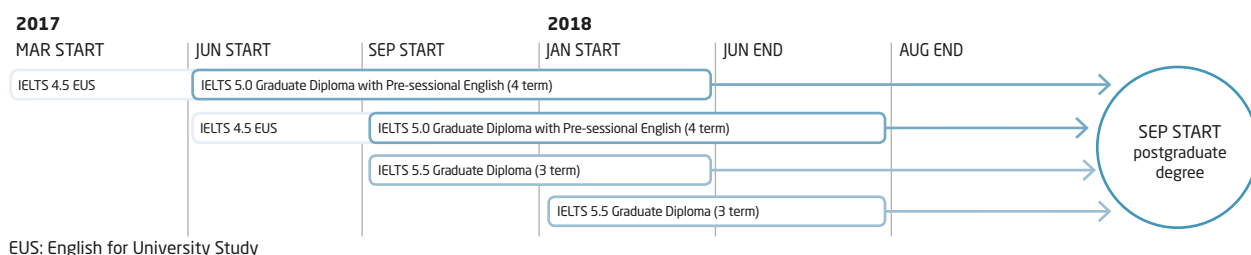
Depending on your English language level the programme lasts three or four terms. The Graduate Diploma with Pre-sessional English (four terms) incorporates a term of intensive English language, which you will be required to pass before progressing to the next stage of the programme. Examples of the programmes are in the chart below.

SCHOLARSHIPS

Generous scholarships are available, find out more at:

www.intostudy.com/queens/scholarships

YOUR STUDY PLAN





"INTO are really professional, and studying with them definitely broadened my view of the world. I plan to help grow the wine industry in Hong Kong and my plan is to expand my business globally."

Jia Hairuo, China

Hear more from Jia Hairuo:
www.myin.to/meet-hairuo

2010
Completed Graduate Diploma

2011
Graduated with MSc Management from Queen's University Belfast

2016
Now working as the Director of Glory Wines Ltd in Hong Kong

Graduate Diploma Finance

- Progression options include **Accounting and Finance**, and **Risk and Investment Management**
- University classes are offered in the **financial trading room** with 12 Bloomberg terminals and software used by market professionals in London and New York
- **9th** out of 101 business schools in the UK for '**research intensity**' (*Research Excellence Framework 2014*)

CORE MODULES (40 CREDITS)

English for Academic Purposes (40 credits)

SPECIALIST MODULES (80 CREDITS)

Accounting for Financial Management (20 credits)
Financial and Economic Strategy (20 credits)
Financial Econometrics (20 credits)
Financial Market Theory and Investment Analysis (20 credits)

See page 55 for module descriptions.

TEACHING METHODS

Modules are taught using a mix of lectures, tutorials and group work activities. Econometrics classes take place in the computer laboratory, allowing you to work directly on your projects in an interactive environment. As part of the Financial Market Theory and Investment Analysis module you will use real world case studies from the international business environment in order to deepen your learning – all subjects studied require you to apply your theoretical knowledge to practical examples. You will be supported and guided by your teachers, while also encouraged to become an independent learner in preparation for postgraduate study.

PROGRESSION TO QUEEN'S UNIVERSITY BELFAST

If you successfully complete the Graduate Diploma in Finance and meet the specified progression requirements for entry to your selected degree (as detailed in the table below) you may proceed to postgraduate study at Queen's University Belfast.

DEGREE SUBJECT	AWARD	LENGTH OF DEGREE	EAP GRADE	GRADE PROFILE FOR PROGRESSION IN 2018
Accounting and Finance	MSc	1 year	Grade B with a minimum of grade D in each component	60% overall in academic modules, with no modules less than 50%
Construction and Project Management				
Economics				
Finance				
Risk and Investment Management				
International MBA	MBA			

Key facts

Start dates

June, September and January

Programme length

3 terms or approximately 9 months
4 terms or approximately 12 months

Class hours

20 hours per week

Class sizes

Maximum of 16 students per class for English language teaching

Age requirement

18 years and above

Academic entry requirements

Pass in an undergraduate degree in any subject from a recognised institution

or

Higher Education Diploma (3-5 years) with acceptable grades in any subject from a recognised institution

Additional requirements

Applicants for the Finance pathway must have previously studied modules in either statistics, mathematics, finance, economics or calculus with good grades.

English language entry requirement

3 terms: IELTS 5.5 (with a minimum of 5.5 in all subskills) or equivalent

4 terms: IELTS 5.0 (with a minimum of 5.0 in all subskills) or equivalent

If you do not meet the minimum English language requirements you should apply for English for University Study. See page 56 for course details.

Please note that in addition to the UKVI IELTS, INTO is able to accept other English language qualifications. For more information on accepted qualifications please see: www.intostudy.com/self-alternatives

Award

Successful completion of Graduate Diploma leads to the award of Graduate Diploma in Higher Education (FHEQ Level 6) from Queen's University Belfast

Validating body

Queen's University Belfast

Further guidance

For further guidance please check with the INTO Admissions Office or your local education counsellor.



FOR DATES AND PRICES,
SEE PAGE 66

Graduate Diploma Management

- Progress to a variety of degrees including **Human Resource Management, International Business and Marketing**
- Queen's Management School is a member of **The European Foundation for Management Development**, one of the key business schools networks in the world
- 18th in the UK for **Management** (*The Times and The Sunday Times Good University Guide 2016*)

CORE MODULES (40 CREDITS)

English for Academic Purposes (40 credits)

SPECIALIST MODULES (80 CREDITS)

Business in an International Context (20 credits)
Business within the European Union (20 credits)
Empirical Enquiry and Critical Thought (20 credits)
Exploring Culture (20 credits)

See page 55 for module descriptions.

TEACHING METHODS

You will be taught through a mix of lectures, tutorials and group work activities. The Empirical Enquiry and Critical Thought module provides you with excellent grounding for future postgraduate study. You will design your own research project, providing a literature review, methodology and plan of action; this module has received particularly high praise from external examiners.

Other modules develop your knowledge with further content-specific learning and require a depth of reading that encourages independent learning. Teachers will bring their own personal experience of working in industry to the classroom, allowing you to draw from their experience. You will also have the opportunity to enjoy various trips outside of the classroom, such as visiting the Northern Ireland Assembly at Stormont.

Key facts

Start dates

June, September and January

Programme length

3 terms or approximately 9 months
4 terms or approximately 12 months

Class hours

20 hours per week

Class sizes

Maximum of 16 students per class for English language teaching

Age requirement

18 years and above

Academic entry requirements

Pass in an undergraduate degree in any subject from a recognised institution

or

Higher Education Diploma (3-5 years) with acceptable grades in any subject from a recognised institution

Additional requirements

Applicants wishing to progress to the MSc in International Business must have an undergraduate degree in Business or Management which is acceptable to Queen's Management School.

English language entry requirement

3 terms: IELTS 5.5 (with a minimum of 5.5 in all subskills) or equivalent

4 terms: IELTS 5.0 (with a minimum of 5.0 in all subskills) or equivalent

If you do not meet the minimum English language requirements you should apply for English for University Study. See page 56 for course details.

Please note that in addition to the UKVI IELTS, INTO is able to accept other English language qualifications. For more information on accepted qualifications please see: www.intostudy.com/self-alternatives

Award

Successful completion of Graduate Diploma leads to the award of Graduate Diploma in Higher Education (FHEQ Level 6) from Queen's University Belfast

Validating body

Queen's University Belfast

Further guidance

For further guidance please check with the INTO Admissions Office or your local education counsellor.



FOR DATES AND PRICES,
SEE PAGE 66

PROGRESSION TO QUEEN'S UNIVERSITY BELFAST

If you successfully complete the Graduate Diploma in Management and meet the specified progression requirements for entry to your selected degree (as detailed in the table below) you may proceed to postgraduate study at Queen's University Belfast.

DEGREE SUBJECT	AWARD	LENGTH OF DEGREE	EAP GRADE*	GRADE PROFILE FOR PROGRESSION IN 2018
Business and Management				
Arts Management	MA	1 year	Grade B with a minimum of grade D in each component	60% overall in academic modules, with no modules less than 50%
Construction and Project Management	MSc			
Human Resource Management				
International Business				
International MBA	MBA			
Management	MSc			
Marketing				
Education				
Autism Spectrum Disorders	MSc	1 year	Grade B with a minimum of grade D in each component	60% overall in academic modules, with no modules less than 50%
Children's Rights				
Educational Leadership				
Educational Studies	MEd			
Inclusion and Special Needs Education				
Law				
Criminal Justice	LLM	1 year	Grade B with a minimum of grade D in each component	60% overall in academic modules, with no modules less than 50%
European Law and Governance				
Human Rights Law				
Human Rights and Criminal Justice				
International Business Law				
Law				
Psychology				
Psychological Science*	MSc	1 year	Grade B with a minimum of grade D in each component	60% overall in academic modules, with no modules less than 50%*

* Degree and progression grades subject to approval. Contact the Centre for more information.



"The course covers the concepts and behaviour of business in a global context, which has greatly helped me to progress to my postgraduate degree at Queen's University."

Muhammad, Pakistan



2014 Applied to **INTO Queen's University Belfast**
2015 Completed **Graduate Diploma**
2015 Progressed to **Management**
 at **Queen's University Belfast**

MODULE DESCRIPTIONS

Detailed descriptions of the core and specialist modules for the Graduate Diploma are below.

FINANCE

C English for Academic Purposes

You will develop the four key areas of competence in English – reading, writing, listening and speaking – with a particular emphasis on high-level academic writing skills. The programme will use seminars, tutorials and discussion, written and electronic media and will create opportunities for you to speak publicly and engage in dialogue. You will be formally assessed across all four skills areas.

S Accounting for Financial Management

The module provides an introduction to management and cost accounting and focuses on how accounting information is used to assist short-term and long-term decision-making. The module also covers the analysis and interpretation of financial accounting information and how it can be used to improve financial management in organisations.

S Financial and Economic Strategy

This module introduces the financial and economic environment in which organisations must operate and provides a knowledge and understanding of the basic conceptual underpinnings and fundamental principles of microeconomics. Studying issues such as demand and supply, market structure and consumer and firm behaviour, the module considers a range of economic policy issues and explores how a market economy works and the role of government within it.

S Financial Econometrics

This module provides a grounding in the statistical concepts and methods of data analysis commonly applied in business and finance. There is a strong practical element to the module where you will develop your numeracy skills and learn to apply computer software packages to the estimation and analysis of real data.

S Financial Market Theory and Investment Analysis

This module gives you an overview of markets and financial institutions and introduces concepts and techniques in market analysis and behaviours. You will appreciate the importance of corporate governance, and the pivotal role played by the financial manager. The constraints and risks in constructing portfolios to meet investors' financial objectives will be considered and you will learn to evaluate alternative investment opportunities.

MANAGEMENT

C English for Academic Purposes

You will develop the four key areas of competence in English – reading, writing, listening and speaking – with a particular emphasis on high-level academic writing skills. The programme will use seminars, tutorials and discussion, written and electronic media and will create opportunities for you to speak publicly and engage in dialogue. You will be formally assessed across all four skills areas.

S Business in an International Context

The module seeks to introduce you to the key factors in the external environment in which businesses in the 21st century operate. The module will concentrate on key external forces, including: political, macroeconomic, sociocultural, technological systems; national and international legal systems; and organisational sustainability. Contemporary trends including internationalisation, globalisation and the multinational enterprise will also be explored.

S Business within the European Union

The module will focus on key issues relating to business in a European and global context. Attention will be given to the workings of the European Union and how this impacts on business. You will explore a number of case studies focusing on Northern Ireland (as a region within the UK) and the Republic of Ireland as a means of understanding the development of the European Union and how the European context impacts current and potential future business practices.

S Empirical Enquiry and Critical Thought

The aim of the module is to develop your skills to investigate, understand and interpret information as applied in a business and management context. The module has two objectives. Firstly, it introduces you to the philosophical and ethical underpinnings of business and management research (critical thought), as well as to a range of quantitative and qualitative data-collection techniques used therein (empirical enquiry). Secondly, it seeks to help you apply these analysis skills to real-life case problems. This module analyses and evaluates each of the key stages in the research process drawing on an appropriate range of theory.

S Exploring Culture

The increasingly complex and global nature of businesses today brings many management challenges, not least in relation to understanding the impact of national cultures in an organisational environment. This module provides a broader understanding of the relationship between social and cultural issues such as ethnicity, cultural identity, cultural shock, and cultures colliding as applied to an organisation. The multifaceted nature of culture requires managers to face the challenges that stem from cultural diversity and its implications for the workplace.

Improving your English

We understand that for many international students, English is not their first language, and you may be worried about how you will cope with studying in a different language. To help you to continue to improve your language skills, we offer a range of courses and support services – some of which you can access even before you arrive in the UK.

BEFORE YOU ARRIVE

INTO Get Ready for English

If your offer is conditional on meeting the minimum English language requirements, you will automatically be invited to enrol on our INTO Get Ready for English course.

It is a free, tutored online course that helps you practise and improve your English in preparation for studying abroad. You can take part in the whole course or choose from particular activities that will be of most benefit.

- Get expert, personalised feedback from our UK-based tutors.
- Gain a better understanding of your current level in listening, speaking, reading and writing.
- Study flexibly in your own time.

To find out more, visit:

www.intostudy.com/get-ready-for-english

ONCE YOU ARE HERE

Online support

Taking part in GOLD, our free online tutoring module, may be recommended to continue to help you to improve your English. You can study up to seven hours per week, with two 'live' classes each week. Studying online gives you the flexibility to choose when you want to study, and if you need any help, you can contact your online tutor.

Monitoring your progress

To help monitor your progress and ensure you stay on track, you will be assessed both on arrival and throughout your studies. Working in partnership with Cambridge English Language Assessment, part of the University of Cambridge, we have produced a standardised assessment for students.

Cambridge is recognised as the world leaders in the field of language assessment, providing you with an internationally recognised qualification.



CAMBRIDGE ENGLISH
Language Assessment
Part of the University of Cambridge

English for University Study

Our enhanced English for University Study (EUS) course provides intensive preparation for students intending to join a pre-university academic programme or university degree, and is perfect for students who intend to make more rapid progress in their language and academic skills.

WHAT IS ENGLISH FOR UNIVERSITY STUDY?

You will focus on increasing your ability in core reading, writing, speaking and listening skills, as well as developing your vocabulary. Through practising what you have learned in class, you will become more fluent and confident in using English.

Teaching includes both face-to-face and online learning. You will be taught by qualified English language professionals, and throughout the course you will undertake regular practice tests, ensuring you develop the skills and confidence required to excel in end of term examination.

Key facts

Start dates

September, January, April and June

Course length

1-4 terms

Class hours

20 hours of taught lessons plus an additional 10 learning hours

Age requirement

16 years and above

English language entry requirement

From IELTS 3.0 (with a minimum of 3.0 in writing) or equivalent

Undergraduate students

Students intending to progress to an INTO academic programme and aiming to increase their IELTS score by one full point in a term should enter the course with a score of between IELTS 4.0 and 5.5, depending on the entry requirement for their academic programme.

Postgraduate students

Students intending to progress to the International Graduate Diploma or university degree with a requirement of IELTS 6.0 or 6.5, who enter the course with a score of IELTS 5.5, will typically improve by half an IELTS point per term.



FOR DATES AND PRICES,
SEE PAGE 66

Pre-sessional English

The Pre-sessional English course provides short and intensive preparation in academic English for students who are already academically qualified and are due to start an undergraduate or postgraduate degree at Queen's University Belfast in September 2017.

WHAT IS THE PRE-SESSIONAL ENGLISH COURSE?

- A programme designed to improve your English language skills to the level required by your chosen degree.
- Teaching and assessments tailored to the requirements of university study.
- Learn with students studying the same, or similar subjects at university.
- Focus on content-specific vocabulary, grammar, style and structure.
- Attend lectures from specialists on topics relevant to your future studies.
- Practise speaking English on specific topics related to your degree programme.
- Adapt to living and studying in the UK prior to beginning your degree studies.

WHO SHOULD APPLY?

This course is suitable for you if you hold an offer from Queen's, and need to improve your English language level before starting a degree programme in September. Your course length will depend on your current language level and degree requirements.

Depending on your level of English, you will receive a CAS which covers the Pre-sessional English course only, or a joint CAS, which covers both the Pre-sessional English course and your degree programme.

WHAT IF I'VE ALREADY BEEN ACCEPTED BY QUEEN'S?

While IELTS exams provide a good indication of your general English level, they do not include assessment of specific academic, degree-level study skills. The four-week Pre-sessional English course will develop these skills, giving you confidence in reading, writing, speaking and listening at university level.

ASSESSMENT

You will be assessed to determine whether you have met the University's English requirements before progressing to your degree programme. Methods of assessment include:

- written texts
- extended essays
- listening tests
- presentations
- portfolio work

Acceptance onto a course is at the discretion of Queen's University Belfast.

Key facts

Start dates

June, July and August

Course length

10, 6 and 4 weeks

Class hours

20 hours per week

Class size

A maximum of 16 students per class

Age requirement

17 years and above

Academic entry requirement

You must hold an offer of a place on a degree programme at Queen's University Belfast.

English language requirement

For degree courses that require IELTS 6.5 for direct entry

4 weeks: IELTS 6.5 (with a minimum of 5.5 in any subskill) or equivalent
6 weeks: IELTS 6.0 (with a minimum of 5.5 in three subskills and 5.0 in one subskill) or equivalent
10 weeks: IELTS 5.5 (with a minimum of 5.0 in any subskill) or equivalent

For degree courses that require IELTS 6.0 for direct entry

4 weeks: IELTS 6.0 (with a minimum of 5.5 in any subskill) or equivalent
6 weeks: IELTS 5.5 (with a minimum of 5.0 in any subskill) or equivalent
10 weeks: IELTS 5.0 (with a minimum of 5.0 in any subskill) or equivalent

Please ensure you consult Queen's University Belfast for details of the English language level required for entry onto your chosen course.

Further guidance

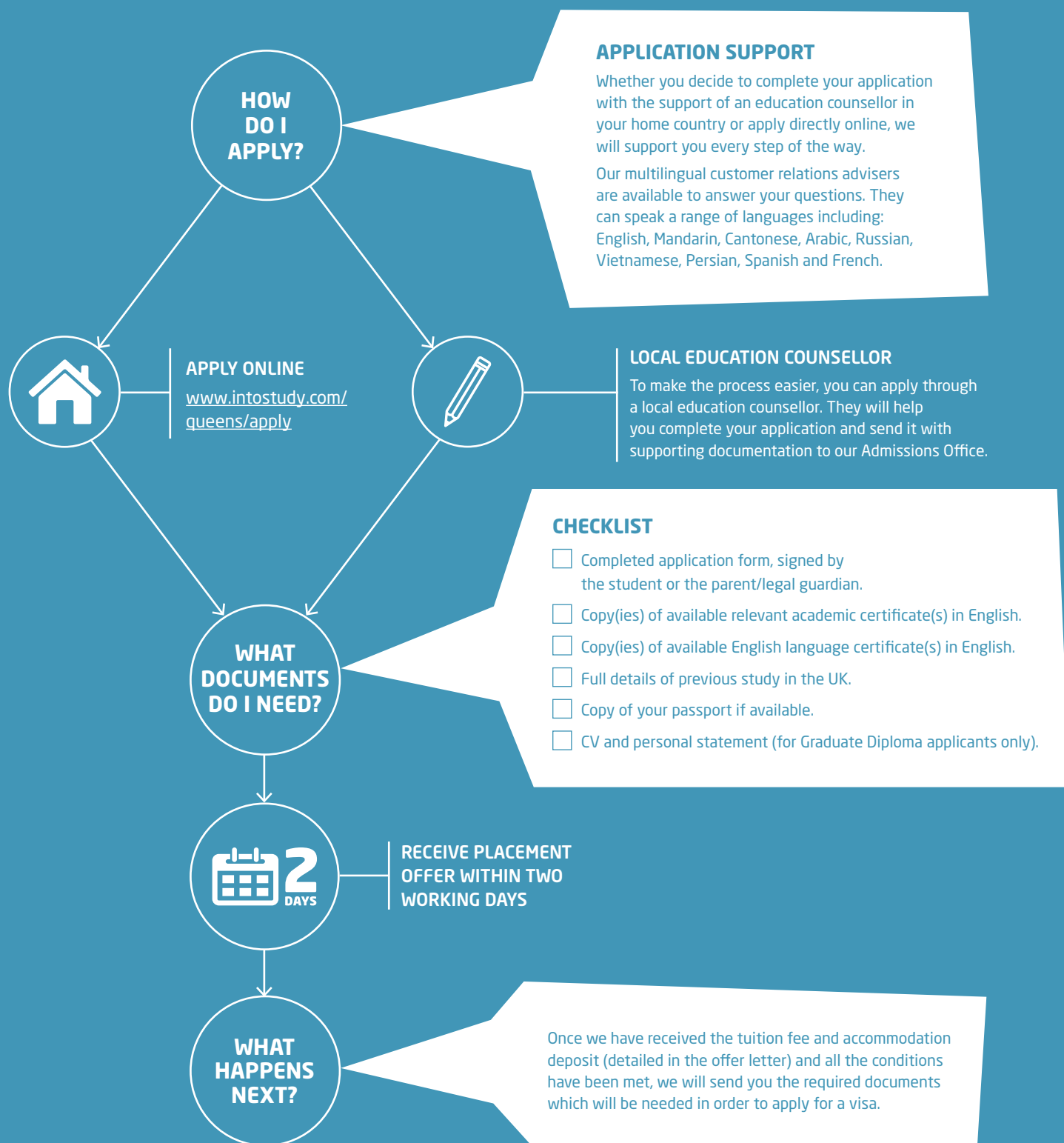
For further information please check with the INTO Admissions Office or your education counsellor.



FOR DATES AND PRICES,
SEE PAGE 66

How to apply

An easy application process to follow from anywhere in the world.



98%

visa success rate in the UK

**INTO**  **QUEEN'S UNIVERSITY BELFAST**

Please complete all relevant sections of the application form in full

You should return your application pack to your local education counsellor or directly to the INTO Admissions Office at least one month before your intended start date.

Please send to: INTO Queen's University Belfast Admissions, One Gloucester Place, Brighton, East Sussex, BN1 4AA, UK
T: +44 1273 876040 | Education counsellors: ukadmissions@intoglobal.com | All other enquiries: ukes@intoglobal.com

You can also apply online at www.intostudy.com/queens/apply

Education counsellor's stamp

Counsellor's name:

Counsellor's email:

Section 1 Student details (You must complete this section accurately otherwise your visa application may be affected)

Title (Mr/Mrs/Ms)

Family name

Other names

Gender ☐ M ☐ F Date of birth / / (dd/mm/yy) Current age

What type of visa do you intend to apply for?

☐ Student Tier 4 visa ☐ Short-term study visa ☐ No visa

Name as written on passport

Passport number

Nationality / citizenship

Do you have or are you applying for permanent residence in the UK? ☐ Yes ☐ No

Are you a US citizen or a US permanent resident? ☐ Yes ☐ No

Do you have dual nationality status? ☐ Yes ☐ No

If **yes**, please provide full details

Permanent country of residence

Student's home address (you must complete this accurately as it may affect your visa)

City

Postcode

Country

Student's telephone numbers in country of residence (including international code)

Tel

Mobile telephone

Student's email address

Section 2 Parent/Spouse/Family member and Sponsor details

Title (Mr/Mrs/Ms)

Family name

Other names

Relationship to student

Contact address

City

Postcode

Country

Telephone (including international code)

Email address

How do you intend to fund your studies?

☐ Self ☐ Family ☐ Employer* ☐ Sponsor*

*Name of employer/sponsor:

Section 3 INTO course selection

Academic programmes

International Foundation

☐ Architecture ☐ Business, Humanities and Social Sciences

☐ Engineering and Science

Please specify start date

☐ Mar 2017 (5 term) ☐ Jun 2017 (5 term) ☐ Jun 2017 (4 term)

☐ Sep 2017 (4 term) ☐ Sep 2017 (3 term) ☐ Jan 2018 (3 term)

Integrated Programme: Undergraduate degree

Please specify your degree programme

☐ Aerospace Engineering BEng (Hons) ☐ Chemical Engineering BEng (Hons)

☐ Civil Engineering BEng (Hons) ☐ Computer Science BEng (Hons)

☐ Electrical and Electronic Engineering BEng (Hons)

☐ Mechanical Engineering BEng (Hons) ☐ Product Design Engineering BEng (Hons)

Please specify start date

☐ Sep 2017 (3 years) ☐ Jan 2018 (3 years)

International Year One

☐ Accounting ☐ Engineering ☐ Management and Finance

Please specify start date

☐ Mar 2017 (5 term) ☐ Jun 2017 (5 term) ☐ Jun 2017 (4 term)

☐ Sep 2017 (4 term) ☐ Sep 2017 (3 term) ☐ Jan 2018 (3 term)

Proposed undergraduate or postgraduate programme (Needs to be completed for visa purposes)

Please provide the name of the degree programme you intend to study at university:

Graduate Diploma

☐ Finance ☐ Management

Please specify start date

☐ Sep 2017 (3 term) ☐ Jan 2018 (3 term)

Graduate Diploma with Pre-sessional English

☐ Finance ☐ Management

Please specify start date

☐ Jun 2017 (4 term) ☐ Sep 2017 (4 term)

English language courses

English for University Study

☐ Sep 2017 ☐ Jan 2018 ☐ Apr 2018 ☐ Jun 2018

Start date / / End date / / (dd/mm/yy)

Please specify number of terms of English

Pre-sessional English

☐ Jun 2017 (10 weeks) ☐ Jul 2017 (6 weeks) ☐ Aug 2017 (4 weeks)

Section 4 Student's education history

Please give full details of your current or most recent school, college or university. For visa purposes we must have a full history of your academic background. Please ensure any gaps in your education are fully explained either on the application form or enclosed with your supporting documentation. All official institution transcripts, latest available results or forecast results must be submitted in English. See page 58 for details of documentation you must submit as part of your application.

I confirm that I have included full details of all of my academic studies and do not have any plans to study further prior to enrolling on my programme with INTO. I understand that failure to provide full information on my academic studies may result in a visa refusal and/or dismissal from the Centre.

Institution name

Dates of study / / to / / (dd/mm/yy)

Date you received (or will receive) your certificate / / (dd/mm/yy)

Highest educational qualification name

Language of instruction

Section 5 Current English language proficiency

Please tick and enter details of your most recent English language test. Note: students will be assessed upon arrival and study plans WILL be altered if there is any discrepancy. Please provide a copy of your certificate.

☐ IELTS for UKVI

☐ Trinity College London

☐ Other (please specify)

Section 6 Welfare

Do you have any conditions, medical or otherwise, that may impact your time in the UK? ☐ Yes ☐ No

Completion and signing of this form gives INTO permission to administer first aid by trained staff first aiders if required.

Do you consider yourself to have a disability? ☐ Yes ☐ No

Have you been convicted of a relevant criminal offence? ☐ Yes ☐ No

If you have answered **yes** to any of the above, please provide full details with your application on a separate sheet.

Section 7 Accommodation options

Do you require accommodation? ☐ Yes ☐ No

Please indicate the building and room type you would prefer by ticking 2 boxes below to indicate your 1st and 2nd choice of accommodation. Please note that INTO aims to provide the highest preference requested but, if this is not available, INTO reserves the right to provide or suggest alternative accommodation.

1st preference:

2nd preference:

Elms Village standard single en suite room ☐

Willow Walk room ☐

Homestay ☐

Section 8 Airport pickup

Flight details including arrival date and flight number should be emailed to ukarrival.details@intoglobal.com as soon as possible. All under 18 students **must** either book an INTO airport pickup or provide evidence of alternative arrangements.

Section 9 Declaration

☐ I declare that the information I have supplied on and with this form is complete and correct

☐ I have read and understood and agree to abide by the Terms and Conditions available at: www.intostudy.com/queens/terms

☐ I agree to abide by the Cancellation and Refund Policy

☐ I agree to pay all tuition and accommodation and sundry expense fees as they become due

☐ I understand that the giving of false or incomplete information may lead to the refusal of my application or cancellation of my enrolment

I agree that copies of my academic progress and performance reports can be supplied to parents, sponsors or education counsellors without further notification ☐ Yes ☐ No

I agree that my records and achievements may be used for promotional purposes, without further notification ☐ Yes ☐ No

Institution city/town

Postcode Country

Email address

Have you ever studied in the UK? ☐ Yes ☐ No

If **yes**, please provide full details of study durations. Please also include a copy of your previous visa (must be completed for visa purposes).

From / / to / / (dd/mm/yy)

Have you ever been refused a visa for the UK? ☐ Yes ☐ No

Have you ever been refused a visa application to any country? ☐ Yes ☐ No

If **yes**, please provide full details

Have you arranged to take any other English language test(s) before starting your INTO course? ☐ Yes ☐ No

Name of exam

Date due to be taken / / (dd/mm/yy)

Travel and medical insurance

The full cost of Uniplan Insurance will be added to the invoice unless proof of alternative adequate cover is included with the application.

Do you require Uniplan insurance to be provided? ☐ Yes ☐ No

Uniplan Insurance cover commences one week before your programme start date and finishes one week after your programme end date. If you require a longer period of cover please complete the start and end dates below.

Start date / / (dd/mm/yy) End date / / (dd/mm/yy)

Do you envisage that you will have any specific requirements in student accommodation as a result of a disability/medical condition? ☐ Yes ☐ No

Dietary requirements

Please give details of special dietary requirements e.g. halal, vegetarian, no pork, any food allergies.

Do you require an airport pickup? ☐ Yes ☐ No

☐ Belfast International Airport (£45) ☐ Belfast City Airport (£60)

All applications submitted will be processed by INTO University Partnerships. By submitting this application, you explicitly agree to the collection, processing and transfer of your personal data (including sensitive personal data) to certain third parties outside of the European Economic Area as set out in the INTO Privacy Policy available at: www.intostudy.com/en-gb/legal-and-privacy-policy

Signed Date / / (dd/mm/yy)

(Parent/guardian) For students under 18

Or

Signed Date / / (dd/mm/yy)

(Student)

INTO Giving: build your employability and make new friends

INTO Giving is a UK registered charity helping educate some of the world's poorest children. When you get involved in your INTO Centre's INTO Giving activities, you can make new friends and build your networks and improve your employability skills. You can show how much you care about helping educate some of the world's poorest children by choosing an amount you would like to donate and have added to your invoice/financial statement. For every penny you donate, INTO will donate another: penny for penny, pound for pound.

☐ £22 ☐ £35 ☐ £50

☐ YES, I am happy to receive INTO Giving project updates and newsletter by email.



INTO Giving: get involved today

We're delighted that you have chosen INTO Queen's University Belfast and look forward to seeing you develop new friendships and your employability grow.

More and more, employers will look not only at your academic achievements, but also at who you are as a person. Being involved with a charity is a great way to show employers that you know how to be a part of or even lead a team, that you're prepared to take on new challenges, and that you have a strong heart.

It's also a great way to meet new people, have fun and make friends.

As part of our commitment towards education, INTO supports INTO Giving, a charity that improves access to and the quality of education for some of the world's poorest children. When these children go to school and learn, they, like you, are empowered to transform their lives and their community.

Donating an amount of your own choice - whether it's £22 or £35, or £50 - to INTO Giving is a great way to begin your INTO experience. Your donation, whatever the amount, will transform children's lives.

On your application form you can opt to donate to INTO Giving. Every penny you donate will go to INTO Giving educational projects across the world.

INTO»

GIVING



www.facebook.com/into.giving



www.twitter.com/intogiving

One Gloucester Place, Brighton, East Sussex BN1 4AA | T: +44 [0]1237 876054 | F: +44 [0]1273 679422 | E: info@into-giving.com
Charity name: INTO GIVING LIMITED | Charity registration number 1126262 | Company number: 6689824

Important

Separate terms and conditions apply for the Queen's University Belfast Integrated Programmes. You can download the University's Terms and Conditions at: www.intostudy.com/qub/integrated/terms

1. Application of the Terms and Conditions

- These terms together with those terms contained in the offer letter (together the "Terms and Conditions") set out the contractual terms which apply between INTO Queen's LLP ("INTO Centre") and students ("Students") in relation to the English language courses and/or academic programmes and any other INTO courses (the "Course").
- As such, Students should ensure they read the Terms and Conditions very carefully before signing and submitting their application for admission to the INTO Centre.
- For the purposes of the Terms and Conditions, any reference to INTO includes the following entities i.e. INTO University Partnerships, IUP 2 LLP, INTO Centre.

2. Application to the Course and Confirmation of Acceptance

- To apply for a place on a Course, Students should complete their application and submit it to the INTO Admissions Office.
- INTO may accept or reject applications in its absolute discretion. If INTO accepts the application, INTO will issue a written offer of a place on a Course to the Student (including any conditions to be met by the Student upon which the offer of a place is based) (the "Offer Letter") together with an acceptance form for the Student to confirm their acceptance of the offer of the place.
- In order to accept the offer, the Student must:
 - satisfy all of the conditions, if stipulated as part of the Offer Letter;
 - complete and return to INTO the acceptance form confirming acceptance of the offer of the place indicated in the Offer Letter;
 - pay a deposit as set out in the Offer Letter which will be used towards the tuition fees due for the Course. The amount of the deposit required will be shown in the Offer Letter; **and**
 - pay the Uniplan Insurance premium (details of which are set out in this brochure) and submit the completed Uniplan form to INTO or provide proof of an acceptable alternative insurance cover.
- After completion of the actions listed in paragraph 2c above, the contract between the Student and INTO is formed. However, if the offer is 'conditional', the contract shall not come into force unless and until the Student meets the conditions of the Offer Letter and completes the actions listed in paragraph 2c above.

3. Course fees and payment

- A breakdown of the total fees payable in respect of the Course is set out in the pro forma invoice included in the Offer Letter. The balance of the invoice including tuition fees payable for the Course, enrolment fee and any insurance fees (if applicable) payable must be paid to INTO at least six weeks prior to the start date of the Course (which is stated in the Offer Letter). Details of indicative course dates are included in this brochure. Once all fees have been paid in full, the fees are fixed for the duration of your course.
- Students are advised that there may be other incidental costs associated with the relevant Course which are payable by the Students. An example of an incidental cost is the cost of travel where Students may have to travel from the INTO Centre to another destination such as a laboratory as part of their Course. Incidental costs will vary depending on the Course enrolled for by the Student and are not included as part of the pro forma invoice.
- All fees set out in the invoice must be paid in full in pounds sterling by cheque, banker's draft, bank transfer, credit card or debit card.
- If bank, credit or debit card charges are incurred by INTO on such payments, where these charges have been incurred through no fault of INTO, these will be re-invoiced to the Student's account so that INTO receives the payment in full.
- All deposits (payable for tuition, accommodation and insurance) required to be paid are non-refundable unless the Student is unable to meet visa entry requirements (in which case the Student will be required to provide an official visa rejection letter to INTO – further details of which are set out in section 9 below) or meet conditions of offer (details of which are set out in section 10 below).

- Any variation to standard payment terms will only be made by prior agreement in writing by the Centre Director of the INTO Centre.
- The prices stated in this brochure are valid for confirmed bookings (with payment) received by INTO on or after 01 January 2017. Tuition fees change on 01 September each year. Accommodation fees change on the Saturday before the start date of the new academic year. However, any increased fees are published in January so as to ensure that Students have adequate notice of any proposed increases prior to September. Please contact INTO for further details or visit the website.

4. Overdue fees

- Interest will be charged on any outstanding fees at the rate of 2.5% above the base rate of Barclays Bank per month or part thereof from the due date (either six weeks prior to course commencement or date of receipt of visa) until payment.
- INTO reserves the right to withhold any certificates, if fees in respect of tuition are still owed by the Student at the end of their Course.
- Fees remain payable if a 'notice of withdrawal' has not been given in accordance with these Terms and Conditions.

5. Changes to Confirmation of Acceptance for Studies ("CAS")

- INTO will issue a CAS, no more than six months before the Student's first Course start date provided that:
 - the Student's offer is unconditional; **and**
 - the Student has paid their deposit or full fees as set out in the Offer Letter.
- Before issuing the CAS, INTO will confirm with the Student that the details to be included in the CAS are correct. Once the student has confirmed that the details are correct, INTO will submit the details to the Home Office.
- If the Student requests any changes to the information on the CAS (other than an update to the 'Fees paid to date' information after making further payments) after INTO has submitted the details to the Home Office and a new CAS is required, the Student will be charged for each request at the then prevailing rate. At the time of going to print the cost is £21 but is subject to review by the Home Office.

6. Cancellation charges

- Subject to paragraphs 7 and 8 below, if the Student wishes to cancel their place on the Course prior to the Course commencing, then, unless such cancellation is due to visa refusals, and/or academic and/or English Language conditions on the Student's Offer Letter not being met, the following charges apply:

Academic programmes, English for University Study, and Pre-sessional English Courses

Tuition fee cancellation charges:

Four weeks or more before commencement: cancellation fee of £500
 Less than four weeks before commencement: cancellation fee of £1000
 Cancellation after course commencement: cancellation fee of one term's full fees (excluding Pre-sessional, where full fees apply)

Accommodation fee cancellation charges:

- Four weeks or more before commencement: cancellation fee of £500
 Less than four weeks before commencement: cancellation fee of £1000
 Cancellation after commencement: cancellation fee will be the entire balance of the accommodation fee owed by the Student
- Cancellations must be made in writing to the INTO Admissions Office, One Gloucester Place, Brighton, BN1 4AA. Cancellations will become valid on the day the written notice is received by INTO.
 - Cancellation charges will be deducted from the deposit and/or tuition fees paid by the Student or, if no deposit and/or tuition fees have been paid by the Student, INTO will invoice the Student for the cancellation charges. Payment shall be due within 30 days of the date of such invoice.
 - Cancellation of a Course results in the cancellation of any Uniplan Insurance policy.

We will refund your premium less:

- a charge for the period you have been insured, unless you have travelled, or a claim or an incident likely to give rise to a claim has occurred, in which case no refund will be due; **and**
- a £25 administration charge.

7. Leaving a Course early

- If a Student wishes to withdraw from their Course, they must notify the INTO Centre in writing as described above in the section 'Cancellation charges'. Withdrawal from the Course by the Student will incur cancellation charges set out in clause 6 being payable by the Student. The balance of any monies owed to the Student will be refunded after deducting the Cancellation charges.

8. Contracts made by distance communication

- If INTO has made its offer for a place on the Course and the offer has been accepted by the Student solely by means of distance communication (i.e. if up to the point when the contract is concluded there has been no face-to-face contact between the Student and INTO or INTO's representative) then the contract between us is a "Distance Contract".
- Students are entitled to cancel a Distance Contract at any time up to the earlier of:
 - 14 days from the date when the Distance Contract is concluded; **or**
 - the date on which the Student starts the Course.
- In order to cancel the Distance Contract, the Student must inform INTO in writing at the INTO Admissions Office, One Gloucester Place, Brighton, East Sussex, BN1 4AA within the time periods set out in paragraph (b) above. The Student is requested to use the model cancellation form when notifying INTO. For more information and to download the form visit: www.intostudy.com/en-gb/terms/cancellation-policy.
- If any payment has been made by the Student to INTO under these Terms and Conditions prior to the date of cancellation then a full refund will be provided by INTO using the same payment type as soon as possible but, in any event, within 30 days of receipt of the Student's notification of cancellation.

9. Cancellation or deferral because of Visa refusal/Visa delays

- Students are advised that they are responsible for reviewing the current UKVI (UK Visas and Immigration) visa requirements and ensuring that all relevant documentation submitted complies with the requirements stipulated by UKVI. INTO will offer advice regarding queries raised by Students in relation to UKVI requirements. However, the sole responsibility of submitting UKVI compliant documentation rests with the Student.
- Students are entitled (provided such refusal / delay is not the result of any fraudulent activity) to cancel or defer a Course due to refusal or non-receipt of a necessary visa providing that the Student informs the INTO Admissions Office in writing and sends evidence to INTO of the visa refusal or that the Student advises INTO that they have not yet received the relevant visa from the Embassy as early as possible and in any event no later than two weeks after the Student's proposed Course start date (or one week for English for University Study and Pre-sessional English courses).
- Cancellation charges (except for Uniplan Insurance cancellation fees which will apply as outlined above in paragraph 6d) will not be incurred in the circumstances described in paragraph (a) above provided that the Student complies with the notice requirements set out and any deposit and/or tuition fees already paid will be refunded accordingly. Failure to provide the relevant information in the timescales set out in paragraph (a) will result in normal cancellation charges applying as set out in paragraph 6.
- If the visa refusal states that the visa has been refused due to any type of fraudulent activity by (or with the approval of) the Student then, notwithstanding paragraph 9c, the Student shall be liable for full deposit which will become non-refundable and the total of all claims, damages, losses (including consequential and indirect losses) and expenses incurred as a result of such fraud and the need to comply with any associated internal or external investigation.

10. Cancellation because conditions of offer are not met

- a. If INTO's offer to the Student is conditional upon the Student meeting the requirements set out in the Offer Letter, INTO reserves the right to withdraw its offer to the Student if the requirements of the Offer Letter are not met.
- b. If a Student does not meet the requirements set out in the Offer Letter (Academic or English language), provided that the Student informs INTO in writing and sends evidence that the requirements have not been met as early as possible but at least four weeks before the Course start date, no cancellation charges will be payable by the Student to INTO. This information must arrive at the INTO Admissions Office in the UK no later than four weeks before the Course start date or the day after the Student's exam results are published (if this falls after the four week cut off point). If INTO receives the relevant information (including evidence of the date of publication of the results if this falls after the four week cut off point) within the timelines outlined above, any deposits/fees already paid (minus the Uniplan Insurance cancellation fees as outlined above in paragraph 6d) will be refunded by INTO to the Student. Failure to do this will result in normal cancellation charges applying (as set out in clause 6 above).

11. Deferrals

- a. A Student may defer the start of a Course if the Student has been prevented by external events from starting the Course, up to a maximum of two occasions. An external event includes (without limitation) serious illness or injury of the Student or of a close member of the Student's family.
- b. Students must ensure that any request to defer is accompanied by a full explanation of the reasons for the request, is presented in writing and normally reaches the INTO Admissions Office in the UK at least six weeks before the Course start date. If INTO receives the request after this date, normal cancellation charges may apply (see the 'Cancellation charges' section above). The request should also include details of the Student's preferred new start date for the Course.
- c. All deferrals are subject to the availability of the requested chosen new Course start date at the time INTO receives the Student's request to defer.
- d. Any deferral requests in excess of the two occasions referred to above will be considered by the INTO Admissions Office on a case-by-case basis and acceptance of a deferral request will be at the INTO Admissions Office's sole discretion.
- e. On the basis that a new CAS will need to be issued if a request to defer is successful, the Student will be charged the fee in respect of the new CAS (as described in paragraph 6c above).
- f. Student accommodation will need to be re-booked and is subject to availability.
- g. If the reason for deferral is due to visa refusal, the provisions set out under section 9 above shall apply.

12. Academic criteria and attendance

- a. Students are accepted onto the Course on the strict understanding that progression through the Course and successful completion of the Course are conditional upon satisfactory attendance and successful attainment of specified progression grades.
- b. Students are accepted onto the Course on the strict understanding that they attend all classes. By signing the application form, the Student accepts that if they fail to attend classes without good reason, or without the permission of a member of INTO staff for the Course or a member of the Centre Senior Management Team, they may be deemed to have withdrawn or be required to leave the Course. In the case of students studying on a Tier 4 visa, the Centre may also report the situation to the Home Office.
- c. During the Course induction all Students will be made aware of the criteria for successful completion of the Course. The assessment of student performance may take into consideration coursework, internal centre examination results, attendance, effort in class and homework.

- d. Students who do not meet the academic and/or any other attainment criteria for successful completion may not be allowed to proceed with their intended study plan. In such cases, Students will be offered advice on suitable alternative study options.
- e. Students who do not meet the attainment criteria for progression from an English language programme, or who are identified at being at serious risk of not meeting the attainment criteria for progression from an English language programme, to their intended Course of study (including Extended courses) will be offered advice on alternative study plans which may include further study on the English language Course. In some cases, an alternative study plan may involve additional time and expenditure with regard to tuition and accommodation fees.

13. English language admissions criteria

- a. Offers are made to Students for both English language and academic Courses on the basis of the certification provided by the Students that they meet the admissions criteria. If, however, the results from the tests and assessment procedures on arrival provide clear evidence that a Student's actual level of proficiency in the relevant discipline is lower than claimed and lower than that required for their designated Course or for visa entry purposes, then the Student will be formally advised of the results and of their options.
- b. Where 13a applies:
 - i. if the English Language level is below the level for visa entry purposes then the Student will have to return home; or where 13bi does not apply;
 - ii. an alternative study plan which may involve additional time and expenditure with regard to tuition and further accommodation fees may be required. This will be determined at the discretion of INTO.

14. Behaviour, welfare and attendance

- a. By signing the application form, the Student consents to INTO requesting and receiving any relevant information from any University school, service or centre concerning the Student's behaviour, welfare and attendance, and to allow the efficient operation of the Centre.
- b. If the Student has welfare and/or pastoral problems or concerns, the Student should in the first instance refer to the INTO Student Handbook or contact the Head of Student Services or the Student Services team.
- c. By signing the application form the Student agrees to adhere to the INTO Centre Code of Conduct (published in the INTO Student Handbook) and all other University regulations, where applicable. Serious breaches of INTO and/or University regulations, where applicable, may result in expulsion from INTO and the University with no refund of fees.

15. Class times and sizes

- a. For all Courses, classes will normally be held Monday to Friday between the hours of 08:00 and 19:00. However, there may be instances where classes could be held outside of these time due to unforeseen circumstances in which event INTO will provide Students with reasonable and adequate notice of any changes to classes.
- b. Lessons will take place in the form of classes, seminars, workshops and lectures. Academic subject class sizes will vary depending on the learning format (e.g. lecture, seminar, lab practicals, off site field trips).
- c. Although, examinations will normally be held during class hours as detailed in 15a, there may be instances where examinations may be required to take place in the evening, on weekends and public holidays, and at venues outside of the main centre. In the event that examinations take place outside normal class hours, INTO will provide the Students with reasonable and adequate notice so as to minimise the impact of any changes.

16. Holidays

- a. No regular classes will take place at INTO on recognised UK public holidays.
- b. No refunds will be made for classes not taking place on these dates.
- c. On occasion examinations may be held on these dates. Term dates relevant to individual Courses are published in this brochure and no classes will take place outside these dates.

17. Arrivals

- a. Students must arrive in the UK on the Saturday or Sunday before the Course start date and register and enrol at the Centre on the published start date.
- b. Late arrivals – INTO expects all Students to arrive and start their Course on the scheduled start date. However, INTO recognises that Students are sometimes delayed for unavoidable reasons (these would include, for example, cancellation of, or delays to, flights or other transport). In exceptional cases, the INTO Centre will allow Students to arrive up to two weeks after the published start date for academic Courses and up to one week late on English language Courses. Unavoidable late arrivals must be approved in advance by the Head of Admissions of INTO as soon as the Student becomes aware that he or she will not arrive in time for the scheduled start date.
- c. Students on Pre-session courses MAY NOT arrive late.
- d. If, due to late arrival, a new CAS has to be issued, there will be a charge for the issuing of the new CAS (as set out in paragraph 5c above).
- e. No discount or refund of fees will be given for late arrivals.

18. Accommodation

- a. At the time of application to the Course, Students are invited to select their preferred accommodation. INTO aims to provide the accommodation as requested but, if this is not available, INTO reserves the right to provide an alternative type of accommodation. This will be charged at the published rate for such accommodation as set out on the fees page within this brochure.
- b. Accommodation is allocated as per the instructions on the application form and upon receipt of the signed copy of the student's acceptance form and payment of the appropriate accommodation deposit (as evidenced by the Student's invoice). Under 18s are required to stay in INTO accommodation or with DBS checked homestay hosts unless full details have been provided of alternative living arrangements with a named adult over the age of 21.
- c. Students will be sent a copy of the accommodation terms and conditions with their offer letter and are required to agree to them when returning the acceptance form.
- d. The accommodation deposit is described in the Offer Letter. Accommodation is guaranteed once the deposit has been paid, the student has returned a ticked and signed Acceptance Form, and the Student has received confirmation that the type of room they have requested is available.
- e. INTO accommodation is only available to Students who are registered on fulltime INTO Courses.
- f. Accommodation is not available to family members of Students (unless they are also registered on full-time Courses at INTO).
- g. If a Student is eligible to resit an examination ("a resit") the date of such resit may be outside the term dates of the programme. If that is the case any decision to indeed resit that examination shall also constitute an undertaking by the Student to meet the relevant charges for extending accommodation to cover this period should they (or their parents and/or guardian if the student is under 18) wish so to extend.
- h. INTO advises Students to insure their personal belongings. INTO shall have no liability for any loss, theft and/or damage to Students' personal belongings. INTO can provide details of insurance policies on request.
- i. Where a Course spans a holiday period accommodation fees will still be charged for those periods.
- j. All Students will be required to pay a damage and sundry expenses deposit of £500 which will be invoiced at the time of booking their course and shall be payable at least six weeks prior to the start date of the Course. Such deposit is refundable at the end of the Course minus any costs not already paid in Centre for any damages, exceptional cleaning or other charges which have been incurred either to the residential/homestay accommodation or the premises and/or facilities which are discovered during occupancy or once an inspection has taken place after the Student's departure. The INTO Centre will repay any monies owing within 60 days of the Student's final Course end date.

- k. Breakages – Students are responsible for payment of any damage caused by them to property owned or occupied by the University (where applicable) or the INTO Centre. Students in residential accommodation may be required to sign an inventory on arrival and departure. The INTO Centre reserves the right to recover costs for damage or exceptional cleaning from Students. Any damage which requires repairs and/or exceptional cleaning which occurs whilst the Student is living in the property or is required following the Student's departure will be charged to the Student separately at the going rate. Any damage discovered during the student's stay will be invoiced at that time and payment will be due immediately. Charges for damage discovered after departure will be deducted from the deposit payable by the Student as set out in paragraph 18j above. If the amount due is in excess of the deposit paid by the Student, INTO will invoice the Student for the excess amount. The Student shall pay any such amounts to INTO within 30 days of the date of the invoice.
- d. Fees will only be refunded for 'missed pickups' if the Student informs INTO, by telephoning the INTO emergency telephone number (as detailed in your confirmation pack), that their pickup will not be required or that they will be delayed before they leave the departure airport, or if they have arrived at their destination airport and the transfer is a no show, they telephone the INTO emergency telephone number (as detailed in your confirmation pack), to alert the INTO Centre that their transfer is a no show before they leave the arrival airport.
- e. Airport pickups are compulsory for students under 18, unless parents provide INTO with evidence that they have made alternative arrangements for the collection of their child from the UK entry airport. A similar compulsory delivery of students under 18 to their departure airport applies.

22. Travel to the INTO Centre

- a. INTO expects Students to assist INTO with its Green Travel Plan, as may be reasonably required.
- b. Students may not bring cars to campus unless otherwise agreed in advance by INTO. Please contact INTO for further details of our Green Travel Plan.

23. Record keeping duties under TIER 4 Immigration rules (PBS)

- a. INTO is required to comply with regulations of the UKVI enforced from time to time. Students undertake to comply with any reasonable requests as determined by UKVI regulations. The requests may include but are not limited to providing a copy of Students' passport, identity card for foreign nationals or United Kingdom immigration status document, Students' UK contact details and class attendance records.
- b. Under the TIER 4 Immigration rules (PBS) the sponsor licence holder will report to the Home Office in the following circumstances:
 - i. if the Student fails to enrol on the Course within the enrolment period;
 - ii. if the sponsor licence holder stops being the Student's immigration sponsor for any other reason, for example, if the Student is withdrawn or moves into an immigration category that does not need an approved education provider;
 - iii. if there are any significant changes in the Student's circumstances, for example, if the length of a course of study becomes shorter; or
 - iv. if INTO has any suspicions that the Student is breaking any conditions attached to their permission.
- c. Students should pay attention to the specific requirements of their Tier 4 student visa. Where it is noted on their visa, students should register with the police and should provide proof of same to the Centre Student Support team.
- d. Students are ultimately responsible for reviewing and ensuring that their visa application complies with current UKVI visa requirements.

24. Medical treatment and accident insurance

- a. Acceptance by the Student (or by his/her parent or legal guardian if the Student is under 18), of a place to study at the INTO Centre indicates that the Student (or parent/ legal guardian if the Student is under 18):
 - i. gives permission for the administration of first aid and appropriate non-prescription medication to the Student if required; **and**
 - ii. if the Student is under 18, for INTO to recommend that the Student seeks medical, dental or optical treatment when required.
- b. All Students must maintain a valid and comprehensive medical and accident insurance policy for the duration of their stay. Students unable to provide evidence of adequate cover at the time of their application are required to take up the Uniplan Insurance cover as a condition of enrolment.

25. Students who are under 18

- a. INTO strongly recommends that parents appoint a UK based guardian, who must be at least 21 years of age, for Students under 18 years of age.
- b. If parents are making their own arrangements for either guardianship services or a friend or family member in the UK to act as guardian to the Student, then evidence of these guardianship arrangements and contact details thereof must be supplied at time of confirmation.

- c. Parents of Students under 18 must sign a consent form authorising nominated INTO staff to act (on behalf of the parent) in the case of an emergency. They must also complete a medical information form. The forms will be included with the INTO offer documents and must be completed and returned to INTO at the confirmation stage. Confirmation documents will not be issued unless these forms are returned. Failure to return these forms could result in a Certificate of Acceptance for Studies not being issued.
- d. In the case of Students under 18, any reference in these Terms and Conditions to liability of Students shall also infer liability on the parents or guardian of the Student and such liability is joint and several.

26. Use of Student information by INTO

- a. Students agree that copies of their regular reports on their academic progress and performance can be supplied to parents, sponsors or agents without notification, by completing the student record section of the application form.
- b. Students agree that if INTO has serious concerns about their welfare, INTO can contact their parents or family members without notification. Consent is hereby given by the Student to the above until formally withdrawn in writing.
- c. Students and, if the Student is under 18, the Student's parents/guardians/ sponsors hereby consent that the Student's records and achievements, images and sound may be used for promotional purposes, by completing the student record section of the application form.
- d. INTO is obliged to report visa status, attendance records (including all cancellations of or withdrawals from Courses) and UK contact details to relevant UK government bodies and will do so in accordance with its legal obligations under relevant legislation (including under the Data Protection Act 1998).
- e. INTO may disclose information about the Student for the purposes of (without limitation):
 - i. the administration of justice;
 - ii. the exercise of any functions of either House of Parliament;
 - iii. the exercise of any functions conferred on any person by or under any enactment;
 - iv. the exercise of any functions of the Crown, a Minister of the Crown or a government department; and/or
 - v. the exercise of any other functions of a public nature exercised in the public interest by any person i.e. necessary for legitimate purposes and justified by the Data Protection Act.
- f. INTO will process personal information provided to it by Students in accordance with the Data Protection Act 1998 and any other applicable data protection legislation. For further information about how INTO handles and uses personal data please see INTO's Privacy Policy which can be viewed at www.intostudy.com/en-gb/legal-and-privacy-policy.
- g. INTO will only use the personal information provided to it by Students in order to provide and administer the course (including counselling students). Please note that personal data may be shared between INTO, the university partner and external third parties based overseas where applicable, as necessary in order to provide and administer the course (which includes the provision of accommodation). Any personal data shared is in accordance with the Data Protection Act 1998 and with any other applicable data protection legislation. Students acknowledge and agree that by providing their personal details, INTO may also pass their personal data to external agencies or other selected third parties for the purposes of seeking participation in student surveys, undertaking academic audits or ensuring compliance with INTO's regulatory responsibilities.

19. Accommodation fees

- a. All accommodation fees for the entire duration of the accommodation booked must be paid in full in pounds sterling by cheque, banker's draft, bank transfer, credit or debit card at least six weeks prior to the start date of the Course.
- b. If bank, credit or debit card charges are incurred by INTO on such payments, where these charges have been incurred through no fault of INTO, these will be re-invoiced to the Student's account so that INTO receives the payment in full.

20. Accommodation changes or cancellation when a Student has arrived and moved into their Accommodation

- a. Residential/homestay accommodation – In all cases except visa refusals, Students who wish to cancel their accommodation booking will be subject to the cancellation fees as set out in the copy of the accommodation terms and conditions they will have received with their Offer Letter.
- b. Students are bound by the terms and conditions of their accommodation contract.
- c. Full accommodation charges will apply during any notice period as outlined in the accommodation contract.
- d. No change to the type of accommodation arrangements will be made without the written permission of the Head of Student Services or the Centre Director. This permission will only be given in exceptional circumstances. If a Student makes a change to his/her accommodation arrangements or leaves accommodation provided by INTO without the prior written consent of the Centre Director, the Student shall remain liable for the full accommodation payments invoiced or reserved at the time of confirmation.
- e. A Student under the age of 18 may only move to agreed alternative private accommodation where the Student's parent or guardian have certified to INTO that this is the case and that the provision of accommodation by INTO is no longer required. For the avoidance of doubt the Student shall remain liable for the full accommodation payments invoiced or reserved at the time of confirmation in respect of the vacated property.
- f. Residential accommodation may not be available over the two week Christmas period to Students who are under 18 years old. The INTO Centre can assist with alternative arrangements which may incur an additional charge.

21. Airport pickups

- a. Airport pickups may be booked as specified earlier in this brochure. The airport pickup will be for the passenger named on the application form only or for named Students if Students agree in advance (and notify INTO) that they wish to share an airport pickup.
- b. Additional family members or chaperones accompanying the named passenger will be charged additional fees.
- c. The first 30 minutes of waiting time is included in the fee as specified in this brochure. Additional fees may apply for waiting periods longer than 30 minutes.

27. Liability

- a. Subject to the following, INTO (including its staff and/or representatives) shall have no liability to the Student for any loss, damage, costs or expenses arising under or in connection with these Terms and Conditions except where such loss or damage is directly caused by INTO (or its staff or representatives).
- b. Where such loss or damage is directly caused by INTO (or its staff or representatives), INTO's liability shall, subject to the following, be limited to 150% of all fees paid or payable by the Student to INTO.
- c. Notwithstanding any other provision in these Terms and Conditions, nothing shall exclude or restrict INTO's liability for death or personal injury resulting from its negligence or fraudulent misrepresentation or in any other circumstances where liability may not be so limited under any applicable law.
- d. INTO shall have no liability for failure or delay to supply the Course and/or any service contemplated by these Terms and Conditions caused by unforeseen factors or circumstances which are outside of INTO's reasonable control. In the case of unforeseen circumstances, beyond the reasonable control of INTO, INTO will contact the Student to advise a new commencement or re-commencement date regarding the Course or alternatively will agree an alternate course of action with the Student.

28. Disclaimer

- a. Every effort is made to ensure that content published in this brochure is correct at the time of publication. However, due to circumstances beyond INTO's control there may be instances where information contained in this brochure may have changed since date of publication. The most up to date source of information is the INTO Study website which can be accessed at www.intostudy.com. In the event that there are material changes to the information contained in this brochure or to the information on the INTO Study website, these changes will be highlighted in future correspondence. INTO therefore strongly recommends that immediately prior to making any application to INTO or accepting any offer from INTO, Students should refer to the most up-to-date version of the Course descriptions and specifications and the regulations on the INTO website.
- b. Due to unforeseen circumstances or factors beyond INTO's control, INTO may have to make variations to the contents and methods of delivery of the Courses and services, to discontinue, Courses and services, and to combine and merge Courses, if such action is reasonably considered to be necessary by INTO.
- c. Applicants to INTO Courses will be notified as soon as practicable of any material changes likely to have a bearing on their application, such as cancellation of, or major modification to Courses offered, changes to accommodation provision or fees and charges to be levied by the university partner where applicable.
- d. INTO, in marketing its Courses, aims to comply with the British Code of Advertising Practice issued by the Advertising Standards Authority.
- e. Applications to universities for undergraduate or postgraduate courses are governed solely by the applicable terms and conditions of that university, and not by these Terms and Conditions.

29. Equal opportunities

- a. INTO operates an equal opportunities admissions policy. It aims to ensure that no applicant will receive less favourable treatment on the grounds of age, sex, marital status, race, colour, nationality, ethnic origin, sexual orientation, or political or religious belief.
- b. INTO welcomes applications from candidates with disabilities.

30. Entire agreement

- a. These Terms and Conditions and those set out in the Offer Letter will be relied upon by INTO in the provision of English language Courses and/or academic Courses and any other INTO Course to the Student.
- b. Should the Student be relying on terms which are not contained in these Terms and Conditions, the Student should request that the said terms be put in writing so as to avoid any problems about the Student's expectations from INTO in the provision of English language Courses and/or academic Courses or any other INTO Courses.

31. Changes to these Terms and Conditions

- a. INTO reserves the right to vary these Terms and Conditions. INTO will at all times, where possible, provide the Student with reasonable notice of any changes to the Terms and Conditions.
- b. Where material changes to these Terms and Conditions are to be implemented (prior to or after the contract being concluded with the Student) INTO will obtain the student's express consent to the said changes by indicating the material changes to the Student in the Offer Letter (or any time prior thereto) or via separate correspondence in the event that the Offer Letter has been signed.

32. Transfer of these Terms and Conditions

- a. INTO may transfer its rights and obligations under these Terms and Conditions to another organisation within the INTO group of companies. In doing so, INTO will ensure that the Student's rights under these Terms and Conditions are not prejudiced.

33. Severance

- a. Each of the paragraphs of these Terms and Conditions operates separately. If a court finds that any provision of these Terms and Conditions are illegal, the remaining paragraphs will remain in full force and effect.

34. Governing law and jurisdiction

- a. Relevant United Kingdom law will apply to these Terms and Conditions and the relevant courts of the United Kingdom will have exclusive jurisdiction in relation to these Terms and Conditions.

35. Other fees

- a. Accommodation – the fee for accommodation is set out in the Offer Letter, but students should also be aware of other instances which are likely to impact the cost of accommodation:
 - i. Where a Course spans a holiday period accommodation fees will still be charged for those periods;
 - ii. If a Student is eligible to resit an examination ("a resit") the date of such resit may be outside the term dates of the programme. If that is the case any decision to resit that examination shall also constitute an undertaking by the Student to meet the relevant charges for extending accommodation to cover this period should they (or their parents and/or guardians if under 18) wish so to extend.
 Further information regarding accommodation is contained in paragraphs 18–21.

- b. Insurance – where applicable, the fee for insurance is set out in the Offer Letter. Further information regarding insurance is contained in paragraph 24.
- c. One to one tuition – Any Students who require one to one tuition must agree such tuition with the INTO Centre in advance. English language tuition will be charged at £75 per hour and will be invoiced in advance. One to one tuition for other subjects may be available and charges may vary. For such tuition, the student should speak to the Academic Director in the INTO Centre in the first instance.
- d. Textbooks – Textbooks and/or appropriate Course materials will be supplied to Students on enrolment for International Foundation, International Year One, Graduate Diploma and English for University Study or Pre-session English Courses. Students will be invoiced for the textbooks and/or appropriate Course materials immediately following receipt by INTO of the Student's acceptance of the offer of a place on the Course and such invoice is payable at least six weeks before the start date of the Course. The approximate cost of textbooks and/or appropriate Course materials will be £270 per academic course (3 term), £350 per academic course (4 term), £430 per academic course (5 term) and £80 per term for the English for University Study and for Pre-session English. The approximate cost of textbooks and/or appropriate Course materials for the International Year One in Engineering will be £380 per academic course (3 term), £460 per academic course (4 term), £540 per academic course (5 term).
- e. Laboratory fees – Students who are enrolled on science-based academic Courses (International Foundation in Engineering and Science; and International Year One in Engineering) shall be charged an additional fee of £400 per academic year to cover the use of laboratory facilities. This fee will be invoiced to the Student immediately following receipt by INTO of the Student's acceptance of the offer of a place on the Course and such invoice is payable at least six weeks before the start date of the Course

- f. Airport pickups – Airport pickups are compulsory for students under 18, unless parents provide INTO with evidence that they have made alternative arrangements for the collection of their child from the UK entry airport. A similar compulsory delivery of students under 18 to their departure airport applies. Airport transfer fees are set out in the Offer Letter and must be paid for at least 6 weeks prior to the course start date. Further information regarding airport pickups is contained in paragraph 21.
- g. Incidental costs – Students are advised that there may be other incidental costs associated with the relevant Course which are payable by the Students. An example of an incidental cost is the cost of travel where Students may have to travel from the INTO Centre to another destination such as a laboratory as part of their Course. Incidental costs will vary depending on the Course enrolled for by the Student and are not included as part of the pro forma invoice.

36. University placement and progression

- a. Students who pass the INTO Foundation but do not meet the criteria for progression onto further study at Newcastle University may, at INTO's sole discretion receive a refund of all tuition fees paid if, having complied with INTO staff advice with regard to their university application, they have not been offered a place at a UK university on a course appropriate to their qualification.
- b. Students who successfully complete the INTO Foundation, Diploma or Graduate Diploma and who meet the individual entry requirements of Into Queen's University Belfast for their chosen degree will be permitted to progress onto their course provided they have received a conditional offer and met the terms of that offer and any other University entry requirements.

37. Behaviour, welfare and attendance

- a. By signing the application form the Student agrees to adhere to Into Queen's University Belfast's Disciplinary and Attendance Policy, which requires attendance of at least 95%. The student should refer to the Disciplinary and Attendance Policy provided at induction. Students will be registered with Into Queen's University Belfast and will therefore be required to abide by the rules and regulations of Into Queen's University Belfast.

38. Complaints handling policy

- a. The complaints handling policy can be found at www.intostudy.com/en-gb/terms. Students are advised to familiarise themselves with the details of the complaints handling policy as there are separate procedures for the handling of academic and non-academic complaints.
- b. Students are encouraged to utilise the complaints handling policy as found at www.intostudy.com in order to highlight any areas of concern to the INTO Centre.
- c. In the event of any complaints remaining unresolved, the relevant alternative dispute resolution provider used by the INTO Centre is the Directorate of Academic and Student Affairs found at the following web address: www.qub.ac.uk/directorates/AcademicStudentAffairs.



Term dates and prices

ACADEMIC PATHWAY PROGRAMMES

	March start (5 term)	June start (5 term)	June start (4 term)	September start (4 term)	September start (3 term)	January start (3 term)
International Foundation						
Architecture	£24,595	£24,595	£20,295	£20,445	£15,995	£15,995
Business Humanities and Social Sciences	£24,095	£24,095	£19,795	£19,945	£15,495	£15,495
Engineering and Science						
Integrated Programmes: Undergraduate						
Undergraduate degree with International Year One	-	-	-	-	£15,495*	£15,495*
International Year One						
Accounting						
Engineering	£24,095	£24,095	£19,795	£19,945	£15,495	£15,495
Management and Finance						
Graduate Diploma						
Finance	-	-	£19,795	£19,945	£15,495	£15,495
Management	-	-				

* Tuition fees for years 2 and 3 will be charged at the University's set tuition fee. The indicative rate is £18,800 per year. For more information, please visit: www.qub.ac.uk/directorates/sgc/finance/TuitionFees

TERM DATES

March start (5 term)

Mon 27 Mar 2017–Fri 16 Jun 2017
 Mon 26 Jun 2017–Fri 01 Sep 2017
 Mon 18 Sep 2017–Fri 15 Dec 2017
 Mon 08 Jan 2018–Fri 23 Mar 2018
 Mon 09 Apr 2018–Fri 08 Jun 2018

June start (5 term)

Mon 26 Jun 2017–Fri 01 Sep 2017
 Mon 18 Sep 2017–Fri 01 Dec 2017
 Mon 08 Jan 2018–Fri 23 Mar 2018
 Mon 26 Mar 2018–Fri 08 Jun 2018
 Mon 11 Jun 2018–Fri 24 Aug 2018

June start (4 term)

Mon 26 Jun 2017–Fri 01 Sep 2017
 Mon 18 Sep 2017–Fri 15 Dec 2017
 Mon 08 Jan 2018–Fri 23 Mar 2018
 Mon 09 Apr 2018–Fri 08 Jun 2018

September start (4 term)

Mon 18 Sep 2017–Fri 01 Dec 2017
 Mon 08 Jan 2018–Fri 23 Mar 2018
 Mon 26 Mar 2018–Fri 08 Jun 2018
 Mon 11 Jun 2018–Fri 24 Aug 2018

September start (3 term)

Mon 18 Sep 2017–Fri 15 Dec 2017
 Mon 08 Jan 2018–Fri 23 Mar 2018
 Mon 09 Apr 2018–Fri 08 Jun 2018

January start (3 term)

Mon 08 Jan 2018–Fri 23 Mar 2018
 Mon 26 Mar 2018–Fri 08 Jun 2018
 Mon 11 Jun 2018–Fri 24 Aug 2018

ENGLISH FOR UNIVERSITY STUDY

Course term dates	Tuition price
September start Mon 18 Sep 2017–Fri 01 Dec 2017	Per term £ 4,450
January start Mon 08 Jan 2018–Fri 23 Mar 2018	
April start Mon 09 Apr 2018–Fri 15 Jun 2018	
June start Mon 25 Jun 2018–Fri 31 Aug 2018	

PRE-SESSIONAL ENGLISH

Course term dates	Tuition price
2017 10 weeks: Mon 26 Jun 2017–Fri 01 Sep 2017	10 weeks £ 3,450 6 weeks £ 2,070 4 weeks £ 1,380
6 weeks: Mon 24 Jul 2017–Fri 01 Sep 2017	
4 weeks: Mon 07 Aug 2017–Fri 01 Sept 2017	

OTHER FEES

Airport pickup	Price
Belfast International Airport	£45
Belfast City Airport	£60
Course-related fees	Price
Enrolment fee*	£150
Textbooks (3 term academic programme/ <i>Year 1 of Integrated Programme</i>)	£270
Textbooks (4 term academic programme)	£350
Textbooks (5 term academic programme)	£430
Textbooks (International Year One in Engineering, 3 term)	£380
Textbooks (International Year One in Engineering, 4 term)	£460
Textbooks (International Year One in Engineering, 5 term)	£540
Textbooks (English for University Study)	£80
Textbooks (Pre-sessional English)	£80
Lab fee (science-based courses)	£400
GOLD Online English Tutoring	Free
Social programme (optional)	Price
Social programme activity	Free–£22

* Per academic programme, charged upon confirmation.

Please see clause 35 of the terms and conditions on page 65 for further details of programme-related fees

ESTIMATED COST OF ATTENDANCE FOR 2017-2018

	Tuition	Accommodation	Books and fees	Meals	Insurance	Total
International Foundation (3 term)	£15,495–£15,995		£420–£820			£22,922–£24,012
International Year One (3 term)		£5,510–£5,700	£530–£930	£1,140	£357	£23,032–£23,622
Graduate Diploma (3 term)	£15,495		£420			£22,922–£23,112
English for University Study (1 term)	£4,450	£1,450–£1,650	£82	£330	£122	£6,434–£6,634

If you are applying for a visa to enter the UK for a period of more than six months from outside the European Economic Area (EEA) you will be required to pay an Immigration Health Surcharge of £150 per person, per year. The surcharge provides access to the National Health System (NHS) in line with UK citizens but does not cover all eventualities or provide coverage for other associated medical expenses that are included in an insurance policy. Full travel, health and medical insurance is mandatory for all INTO Queen's University Belfast students.

Notes

Prices are valid for all bookings confirmed and paid for after **01 January 2017**, until further notice.



Accommodation prices and insurance

ACCOMMODATION PRICES - INTERNATIONAL FOUNDATION, INTEGRATED PROGRAMMES, INTERNATIONAL YEAR ONE AND GRADUATE DIPLOMA

Start dates	Standard single en suite	Willow Walk apartments	Homestay
March start (5 term)*	£9,010	£9,450	£9,450
June start (5 term)*	£8,785	£9,150	£9,150
June start (4 term)	£7,190	£7,500	£7,500
September start (4 term)	£7,105	£7,350	£7,350
September start** (3 term)	£5,510	£5,700	£5,700
January start** (3 term)	£4,785	£4,950	£4,950

* The 5 term option is not available for the Graduate Diploma.

** The Integrated Programme only has a September and January intake.

ACCOMMODATION PRICES - PRE-SESSIONAL ENGLISH

Start dates	Standard single en suite	Willow Walk apartments
10 weeks	£1,400	£1,500
6 weeks	£840	£900
4 weeks	£560	£600

ACCOMMODATION PRICES - ENGLISH FOR UNIVERSITY STUDY †

Start dates	Standard single en suite	Willow Walk apartments
September and January start (per term)	£1,595	£1,650
April and June start (per term)	£1,450	£1,500

† The prices are for one term only. Vacation weeks in between terms are extra and will be charged at the weekly accommodation price.

ENGLISH LANGUAGE COURSES - ACCOMMODATION NOTES

The prices for both residential and homestay accommodation cover tuition periods only. If your course or study plan spans a vacation period, the accommodation must be paid for during the vacation period as well. Homestay accommodation is only available during vacations by special request and is not guaranteed. A supplement may be payable over the two-week Christmas period. If you wish to leave your belongings with the host family during a vacation period, the full weekly amount will be payable. Please see the terms and conditions at: www.intostudy.com/queens/terms for information regarding the availability of residential accommodation over the Christmas period for under 18 students.

WEEKLY ACCOMMODATION PRICES

	Prices until Fri 15 Sep 2017	Prices from Sat 16 Sep 2017
Halls of Residence		
Standard single en suite	£140	£145
Willow Walk apartments	N/A	£150
Homestay		
Standard	£150	£150

PUBLIC HOLIDAYS

2017	2018
New Year holiday Mon 02 Jan 2017	New Year holiday Mon 01 Jan 2018
St Patrick's Day Fri 17 Mar 2017	St Patrick's Day Mon 19 Mar 2018
Good Friday Fri 14 Apr 2017	Good Friday Fri 30 Mar 2018
Easter bank holiday Mon 17 Apr 2017	Easter bank holiday Mon 02 Apr 2018
May Day holiday Mon 01 May 2017	May Day holiday Mon 07 May 2018
July Holidays Wed 12 Jul 2017 Thur 13 Jul 2017	July Holidays Thur 12 Jul 2018 Fri 13 Jul 2018
Christmas Day Mon 25 Dec 2017	Christmas Day Tue 25 Dec 2018
Boxing Day Tue 26 Dec 2017	Boxing Day Wed 26 Dec 2018

UNIPLAN INSURANCE

Uniplan Insurance is a comprehensive insurance policy prepared especially for international students in the UK to cover loss of personal possessions as well as travel, health and medical claims. Full travel, health and medical insurance is mandatory for all INTO Queen's University Belfast students, and Uniplan Insurance will automatically be added to your course fees unless you show that suitable alternative cover has been provided. INTO is an appointed representative of Endsleigh Insurance Services Ltd, which is authorised and regulated by the Financial Conduct Authority. This can be checked on the Financial Services Register by visiting its website at: www.fca.org.uk/register

Period of cover	Cost Standard
Up to 1 month	£66.40
Up to 6 weeks	£77.51
Up to 2 months	£88.61
Up to 3 months	£121.98
Up to 4 months	£144.24
Up to 5 months	£173.14
Up to 6 months	£195.35
Up to 12 months	£356.95
Up to 13 months	£384.41
Up to 18 months	£465.82
Up to 24 months	£528.29

COVER

Item	Maximum sum insured Standard
All medical emergencies expenses (including repatriation)	£2,000,000
Emergency dental treatment	£500
Funeral costs in the UK	£5,000
Family travel cost to the UK in event of death	£3,000
Personal total disablement	£25,000
Luggage	£1,000
Passport, tickets and passes	£500
Personal money	£100
Single article limit	£200
Valuables total	£300
Personal liability	£1,000,000
Overseas legal expenses and assistance	£10,000
Course fees	Up to £14,000
Cancellation or curtailment charges	£3,000
Excess	£50

PRINCIPAL EXCLUSIONS

General

The first £50 of each and every claim per incident made by each insured person except for claims under personal liability, personal accident and legal expenses where no excess applies. This policy is not available to anyone aged 65 or over.

Cancellation or curtailment charges and course fees

Any circumstances known prior to booking the trip that could reasonably be expected to give rise to a claim.

Emergency medical and other expenses

Treatment or surgery which in the opinion of the medical practitioner in attendance can wait until your return home. Medication, which prior to departure is known to be required.

Baggage and personal money, passport and documents

Valuables left unattended at any time unless in a safety deposit box or in your locked accommodation. Personal money or your passport if left unattended at any time unless in a safe, a safety deposit box or in your locked accommodation.

Want to find out more?

If you would like to find out more about any of our courses or services, please visit our website. You can also contact the Centre via email or phone, or visit one of our education counsellors in your home country.

Enquiries and applications

INTO Queen's University Belfast Admissions

One Gloucester Place
Brighton
East Sussex
BN1 4AA
United Kingdom

T: +44 1273 876040

Education counsellors

E: ukadmissions@intoglobal.com

All other enquiries

E: ukes@intoglobal.com

Centre contact details

INTO Queen's University Belfast

Queen's University Belfast
2-8 Lennoxvale
Belfast
BT9 5BY
Northern Ireland
United Kingdom

T: +44 28 9097 6850

E: into@qub.ac.uk



www.intostudy.com/queens



[www.facebook.com/
intoqueensuniversitybelfast](https://www.facebook.com/intoqueensuniversitybelfast)



www.twitter.com/into_queens



www.mysin.to/intoqubvideos



Download the mobile app at:
www.intostudy.com/queens/app



[www.instagram.com/
intoqueensbelfast](https://www.instagram.com/intoqueensbelfast)

© INTO Queen's University Belfast, December 2016. Every effort is made to ensure that content published in this document is correct at the time of publication. However, due to circumstances beyond our control there may be instances where information contained in this document may have changed since the date of publication. The most up to date source of information is INTO Queen's University Belfast website which can be accessed at www.intostudy.com/queens. In the event that there are material changes to the information contained in this document or to the information on INTO Queen's University Belfast website, these changes will be highlighted in future correspondence. The information provided in this document is subject to INTO's terms and conditions which can be accessed at www.intostudy.com/queens/terms.

IUP 2 LLP is a limited liability partnership registered in England and Wales, registered number OC376452. Registered office: One Gloucester Place, Brighton, East Sussex, BN1 4AA, UK.

Education provider sponsor number 25N2W99V3



Through innovative partnerships with leading universities, we expand opportunities for higher education, ensuring success and transforming the lives of our students and staff.

Education counsellor's stamp