



QUEEN'S UNIVERSITY BELFAST

We will commence shortly at 10.30 am (UK time)

Please mute your microphone to reduce background noise.



**QUEEN'S
UNIVERSITY
BELFAST**

FACULTY OF
ARTS, HUMANITIES
AND SOCIAL
SCIENCES

AHSS Erasmus Visiting Students Welcome & Induction

Overview of Faculty induction

- AHSS Faculty and Schools
- Transition to studying at QUB
- Student Resources and VLE
- Academic Support
- Student Support
- Your School Induction
- University Community





**QUEEN'S
UNIVERSITY
BELFAST**

FACULTY OF
ARTS, HUMANITIES
AND SOCIAL
SCIENCES

Welcome

Professor David Phinnemore
Dean of Education, AHSS



**QUEEN'S
UNIVERSITY
BELFAST**

FACULTY OF
ARTS, HUMANITIES
AND SOCIAL
SCIENCES

Five Schools

SCHOOL OF
**ARTS, ENGLISH
AND LANGUAGES**

SCHOOL OF
**HISTORY,
ANTHROPOLOGY,
PHILOSOPHY AND POLITICS**

SCHOOL OF
LAW

**MANAGEMENT
SCHOOL**

SCHOOL OF
**SOCIAL SCIENCES,
EDUCATION AND
SOCIAL WORK**

Studying at Queen's

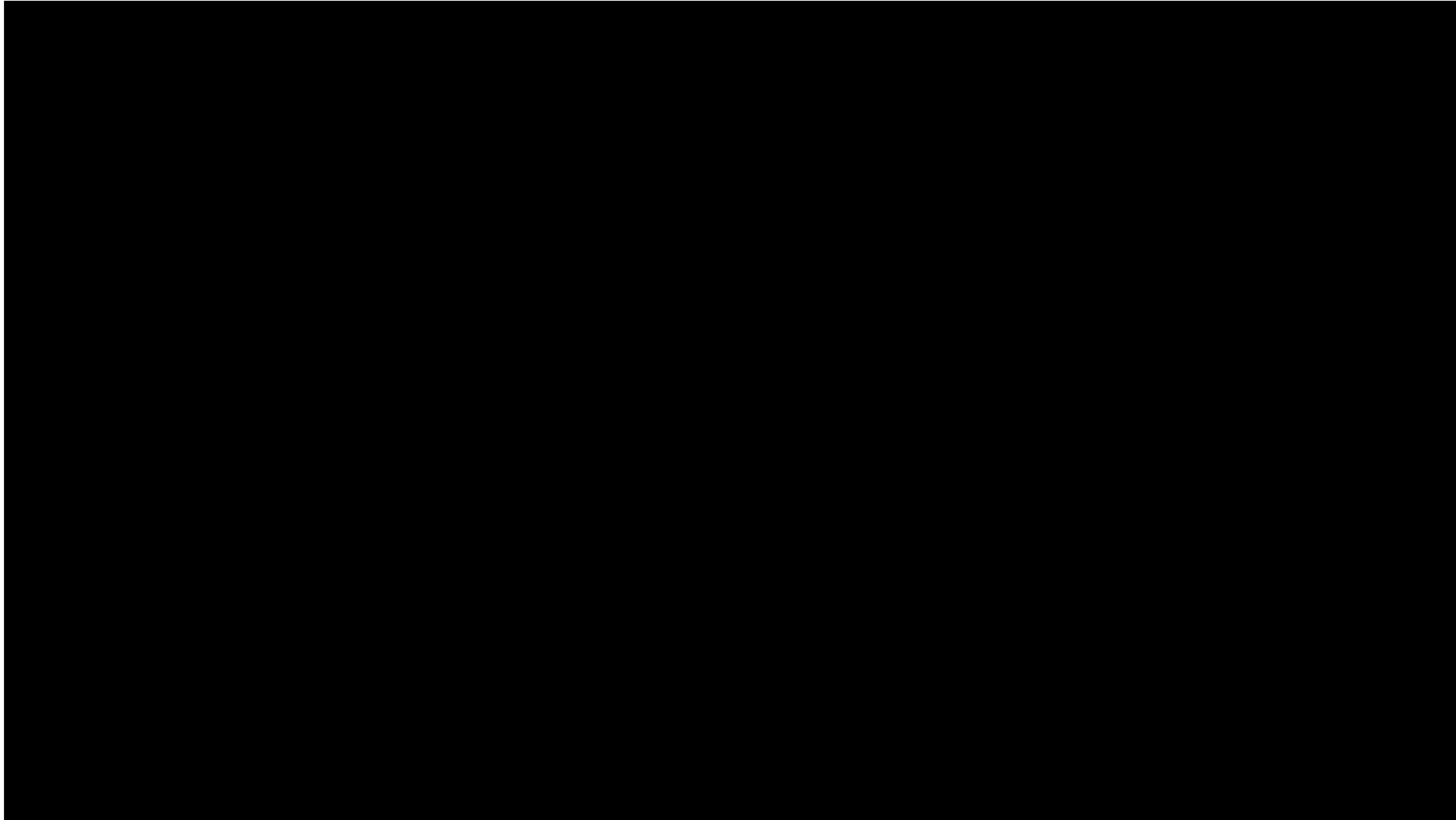
This will most likely differ from your previous learning experiences

- Normally three modules delivered across the semester
- Mix of face-to-face and on-line teaching
- Mix of lectures and tutorials/seminars
- Use of Canvas
- Directed learning
- Independent study, independent research
- Range of assessment methods

Key Student Resources



Morgan's Online Learning Experience



HOW DO I ACCESS CANVAS?

Login to Canvas: <https://canvas.qub.ac.uk>

Other ways to access [Canvas](#):

- ✓ Quick Links section of Queens Online
- ✓ Canvas shortcut on all computer lab PCs
- ✓ Queen's Student website
<https://www.qub.ac.uk/student>
- ✓ Student Gateway website
<https://www.qub.ac.uk/sites/Students/>
- ✓ Canvas@Queen's Blog:
<http://go.qub.ac.uk/CanvasForStudents>



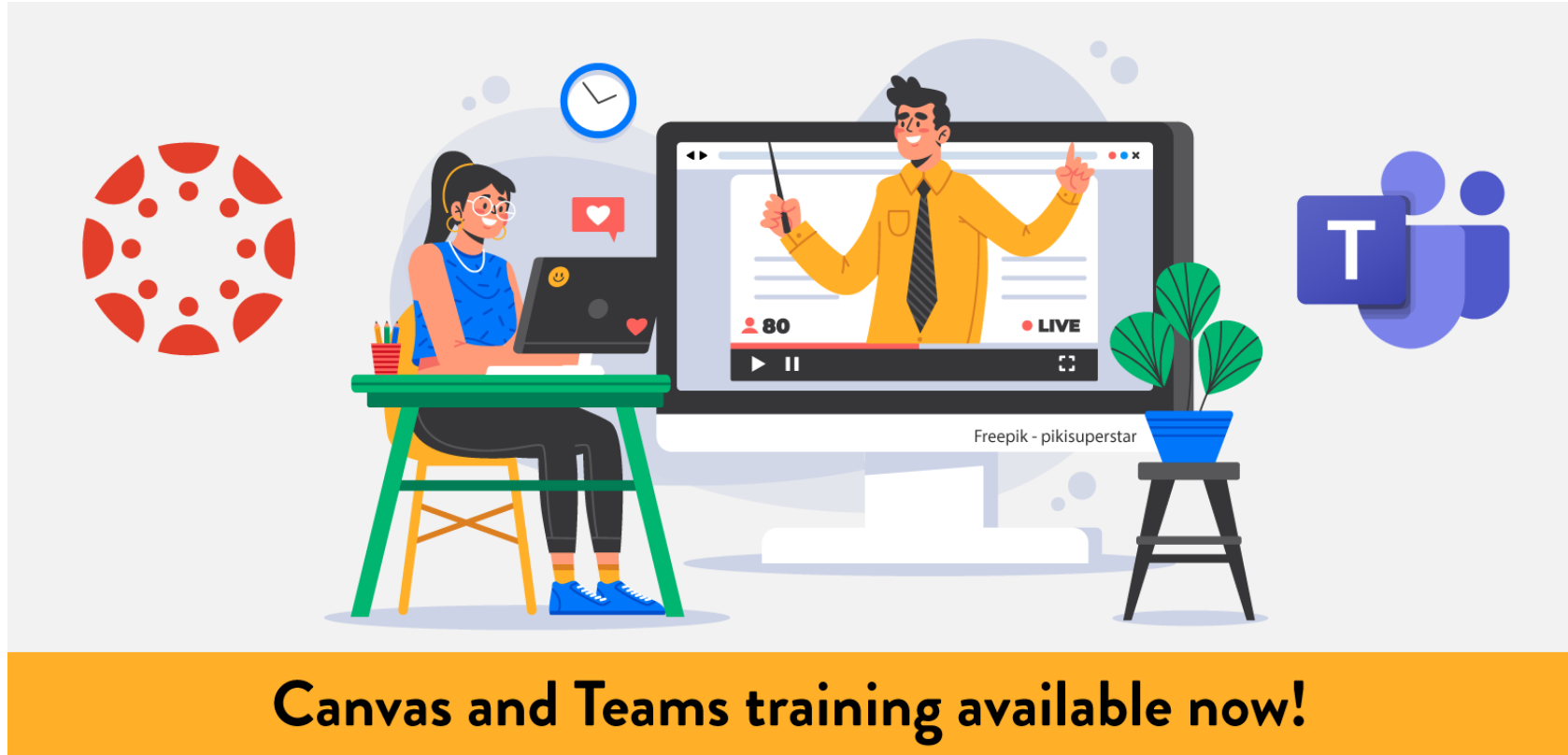
MOBILE ACCESS

The Canvas Student app is the mobile version of Canvas that helps you stay current with your courses, in class and on the go.

You can download the Canvas Student app for free on Android and iOS devices.



Getting Started: Canvas and MS Teams



Canvas and Teams training available now!

[**CLICK HERE**](#)



**QUEEN'S
UNIVERSITY
BELFAST**

FACULTY OF
ARTS, HUMANITIES
AND SOCIAL
SCIENCES

Activity

The Ultimate AHSS Erasmus Playlist

You will be joining one of the AHSS staff members in a break out room for a group task...look in the chat!

GROUP A – Cathy Wilson

GROUP B - Dave Murphy

GROUP C - Lynda Mahon

GROUP D - Gemma O'Donnell

GROUP E- Rachel Gamble

Support for your learning

UG: Learning Development Service

Provide academic skills support for all UG students.

- [Learning resources](#), including referencing, academic writing, critical thinking and study skills
- One to one guidance appointments book [here](#)

Email: lds@qub.ac.uk

Postgrad?

- The Graduate School can [support](#)

English Language Support

Signup opens 21 Sept. Full details are [here](#)



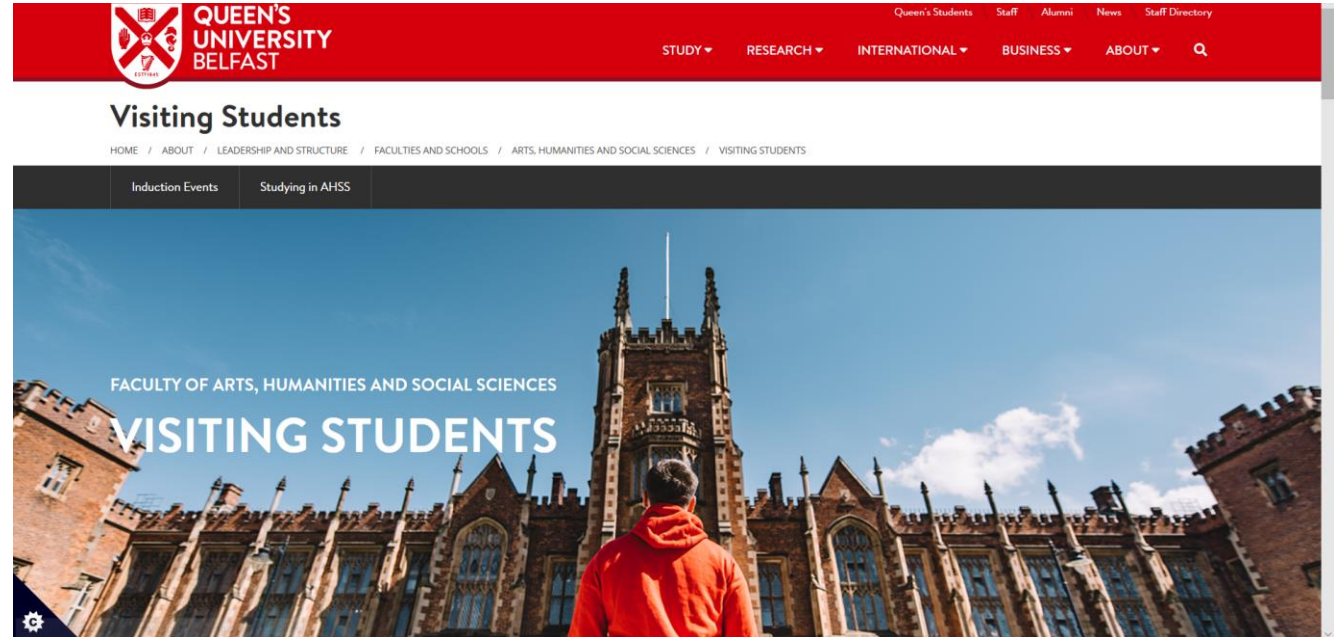
Reminder:
Digital Skills Discovery Hub!

[Unlock your digital skills](#)



Support available in AHSS

- **AHSS Visiting Students [webpage](#)**
- **Regular drop in sessions** on MS Teams
regular weekly drop in Wednesdays
12pm – 2pm
Book [here](#)
- **Weekly What's On updates**
via email
- **Support** accessing services and dealing with any cross-School issues
E: ahssabroad@qub.ac.uk



Checking in
Wednesday 7
October, 4.00pm,
Elmwood Hall



Modules in AHSS

| School | Module Code | Module Title |
|--------|-------------|-------------------|
| HAPP | PAI 2018 | American Politics |

What if I want to change a module?

Usually can make a change within the first two weeks of term.

Remember: Different modules are owned by different Schools and you may have to contact the School of the module before contacting your Adviser of Studies.

Contact ahssabroad@qub.ac.uk if you need more support.

Study spaces in AHSS

Be part of the community

- **50 University Road- ground floor**
(can also be accessed via 2 University Square)
- **27 University Square- basement**
(please note that this room is accessed via 28 University Square and is not currently wheelchair accessible)



Next step: Your School induction

- **SCHOOL OF LAW**

Today, 16 September, 1.15pm: join [here](#)

- **SCHOOL OF AEL**

Today, 16 September, 2.00pm: join [here](#)

- **SCHOOL OF SSESW**

Today, 16 September, 3.00pm: join [here](#)

- **QUEEN'S MANAGEMENT SCHOOL**

Thursday 17 September, 1.30pm, join [here](#)

- **SCHOOL OF HAPP**

Thursday 17 September, 2.00pm, join [here](#)



Your University Community

- **Pre Semester Engagement; BeLong event**
Sunday 20 September, 11am-3pm
You must book [here](#)
- **Virtual Students' Union 'Freshers' Fair'**
30 September and 1 October
 - Clubs and Societies
 - Volunteer SU; [Handy Helpers](#)
- [My Queens](#)
- [The Language Centre at QUB](#)
Registration for classes closes on 8 October





**QUEEN'S
UNIVERSITY
BELFAST**

FACULTY OF
ARTS, HUMANITIES
AND SOCIAL
SCIENCES

Reminder

Collect your student card

When?

Friday 18 September, 11.00 am – 3.00 pm or

Monday 21 September, 9.30 am - 3.00 pm

Where?

Student Guidance Centre



**QUEEN'S
UNIVERSITY
BELFAST**

FACULTY OF
ARTS, HUMANITIES
AND SOCIAL
SCIENCES

Any Questions?

Remember you can contact
E: ahssabroad@qub.ac.uk