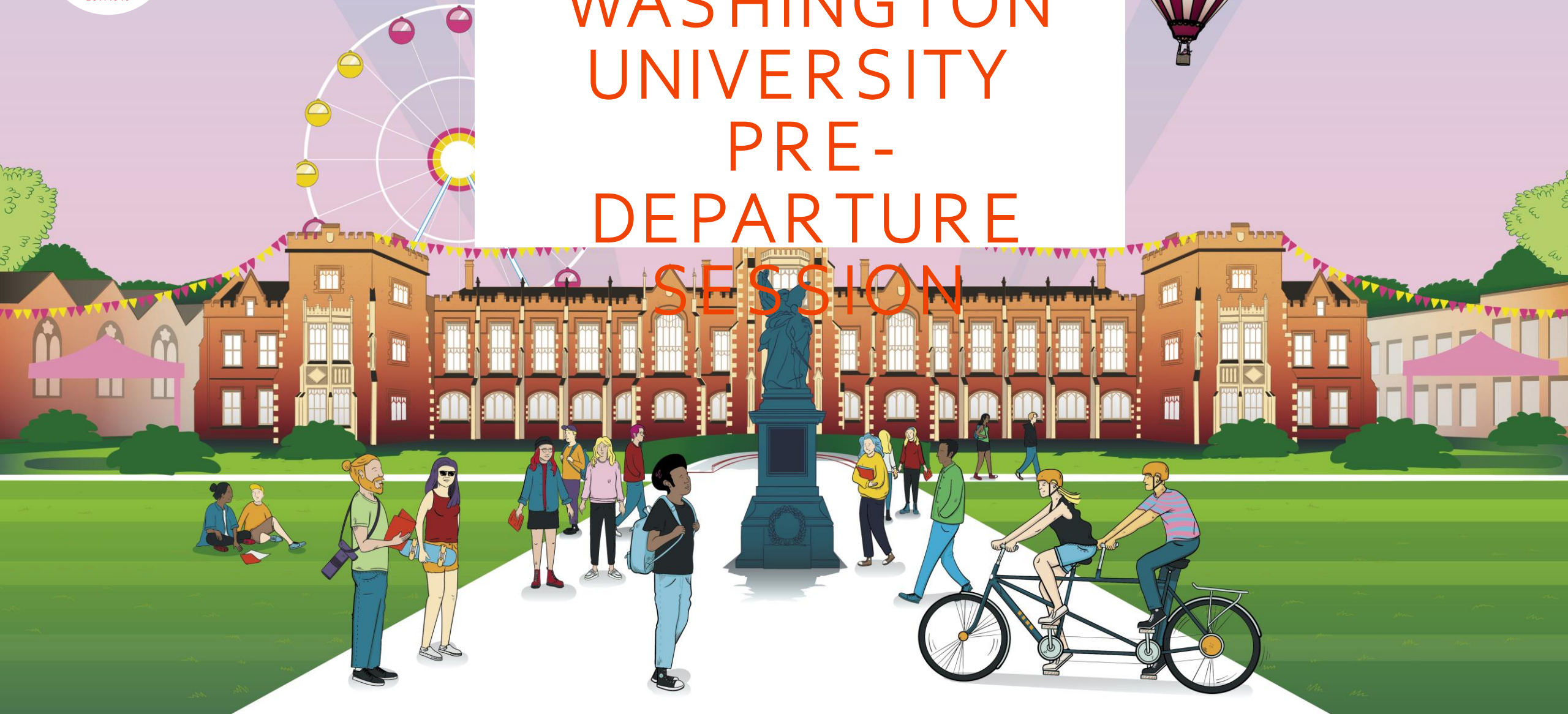




QUEEN'S
UNIVERSITY
BELFAST

GEORGE WASHINGTON UNIVERSITY PRE- DEPARTURE SESSION



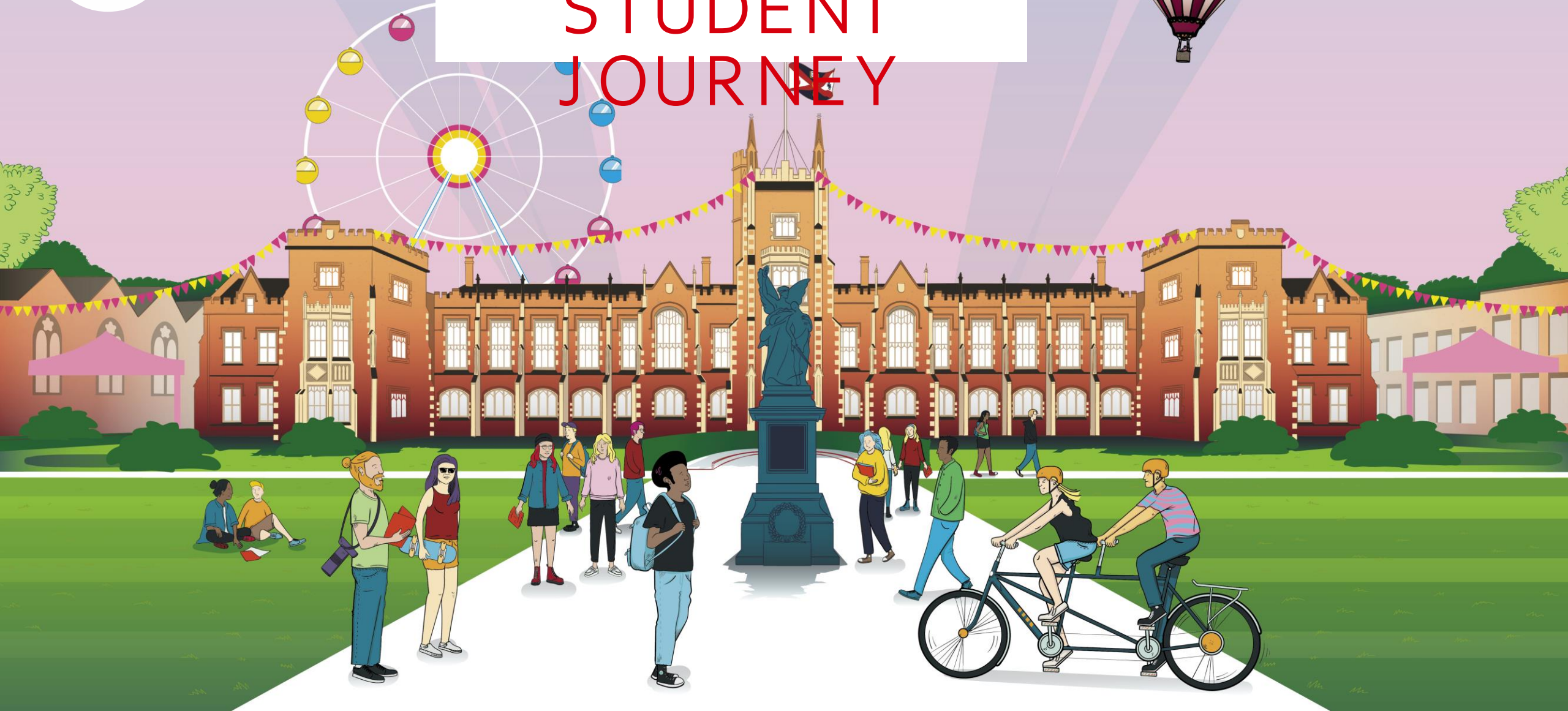
TODAY'S WEBINAR

1. STUDENT JOURNEY
2. VISAS
3. ARRIVAL IN BELFAST
4. ACCOMMODATION
5. ENROLMENT AND REGISTRATION
6. HEALTH AND WELLBEING
7. EDUCATION TRANSITION
8. NEXT STEPS
9. KEY CONTACTS
- 10.Q&A – ASK ANY QUESTION!



QUEEN'S
UNIVERSITY
BELFAST

STUDENT JOURNEY



STUDENT JOURNEY

- ✓ Apply to QUB and submit your documents via email
- ✓ Receive your letter of offer from QUB
- ✓ Accept your offer from QUB
- ✓ Receive your student number and apply for QUB accommodation
- ✓ Receive your Visitor Visa (Study) Letter from QUB
- ✓ Travel to Belfast – enter through UK port of entry (airport)





QUEEN'S
UNIVERSITY
BELFAST

VISAS AND IMMIGRATION



Immigration advice session for Study Abroad and Exchange

Helen McBrinn

Senior Immigration Adviser

International Student Support

International Student Support

Immigration Advice Team (who we are and what we do)

Our dedicated team of five immigration advisers provide professional advice in relation to UK study visa and immigration matters including applying for your visa to come to the UK and assisting you with any queries you may have.

We can provide advice and assistance in relation to a range of UK study visas including:

- **Student visa route**
- **Visitor visa for study**

If you have any immigration difficulties during your time at the University, please let us know and we will do our best to assist or direct you to someone who can provide you with advice.

Summary of different types of immigration permission

- **Standard Visitor Visa for Study**

Is immigration permission that you may apply for if you are studying for less than 6 months

- **Student Visa Route**

Is immigration permission that you may apply for if you are studying for more than 6 months or if you wish **work** during your UK studies

Visitor Visa for Study

This type of immigration permission permits students to come to the UK and study for **less than 6 months**

You may apply for a Standard visitor visa to study:

- For **one** semester as part of
 - an Exchange
 - Study Abroad
 - Erasmus programme

Visitor Visa for Study

Check where to apply?

Visa nationals – **must** apply **in advance** of travelling to the UK

Examples are nationals of the following countries: China, India, Tunisia

Non-visa national – can apply **in advance** or **at the UK border** (i.e. airport)

Examples are nationals of the following countries: Canada, EU/EEA, USA.

You should not apply at the UK border (airport) if you have a criminal record, you've previously been refused entry into the UK or have recently held visitor permission



Visitor Visa for Study

Where do you apply for this visa or immigration permission?

If you are unsure, you can check here: www.gov.uk/check-uk-visa

Non-visa nationals

**Information based on your
answers**

You will not need a visa to come to the UK

Explanation: You do not need to have applied for a visa before you travel to the UK. You would need to instead request Standard Visitor immigration permission on arrival to the UK.



Visitor Visa for Study

Applying for immigration permission at the UK border (airport)

What you need at the UK border (**non-visa nationals only**)

You must provide a **valid passport** and it should be valid for the whole of your stay in the UK.



Immigration permission granted at UK border passport is stamped to confirm

You *may* also be asked to prove that:

- the letter of acceptance provided by Queen's University Belfast
- you're able to support yourself during your trip, e.g. your or your parent's bank statement
- you've arranged accommodation for your stay
- you'll leave the UK at the end of your visit

There is no charge when you apply at the airport



Visitor Visa for Study

Applying for immigration permission at the UK border (airport)

ePassport Gates (**non-visa nationals only**)



- E-gates permission is granted but no stamp in passport – keep your boarding pass

Visitor Visa for Study

Arriving in to the UK via the Republic of Ireland



If you are a **non-visa national** studying at Queen's for less than 6 **months** and planning to apply for immigration permission on arrival, you will not have the opportunity to do this because there is no immigration control at your UK arrival point (i.e. between Dublin and Belfast), however you may be eligible to study in the UK under 6 months '**deemed leave**'

Check here:

www.ukcisa.org.uk/Information--Advice/Visas-and-Immigration/Arriving-via-Ireland



Visitor Visa for Study

Visa nationals & Non-visa nationals

Applying for a **Visitor Visa for Study** in advance of traveling to the UK:

- You can do this online here: <https://www.gov.uk/standard-visitor-visa/apply>
- An application takes approximately 3-4 weeks
- Cost £100
- You must attend a biometrics appointment
- Must provide supporting documents with your application
 - a passport that is valid for the duration of your visit
 - the letter of acceptance provided by Queen's University Belfast
 - you're able to support yourself during your trip
 - any qualification stated in your acceptable letter

Visitor Visa for Study

Visa nationals & Non-visa nationals

Applying for a **Visitor Visa for Study** in advance of traveling to the UK

Useful information

- Visa must be granted before travel
- You will receive a vignette (sticker) in your passport
- The vignette is your visa
- Your visa will be granted for 6 months
- You must travel to the UK within your visa validity dates
- You may want to [apply for a Standard Visitor visa](#) if you have a criminal record or you've previously been refused a visa or entry into the UK or the Republic of Ireland.

Visitor Visa for Study

You can not:

- do paid or unpaid work for a UK company or as a self-employed person
- claim public funds (benefits)
- do a course of study that lasts longer than 6 months
- cannot switch to another visa category from within the UK or extend this visa
- bring dependants (family with you) with you

You will require:

- medical insurance to cover your stay in the UK as you do not pay immigration health surcharge

QUESTIONS?

email immigration@qub.ac.uk

ISS Visa and Immigration web pages:

<https://www.qub.ac.uk/sites/iss/VisasImmigration/>

UK Council of International Students Affairs (UKCISA)

<https://ukcisa.org.uk/>



QUEEN'S
UNIVERSITY
BELFAST



QUEEN'S
UNIVERSITY
BELFAST

ARRIVAL IN BELFAST



YOUR FIRST FEW WEEKS

AIRPORT ARRIVALS

Please complete this form ASAP - go.qub.ac.uk/GWairport

Airport arrival information will be emailed out to you once this is complete.

GW WELCOME EVENTS

There will be GW specific events including a welcome lunch, orientation walk, visits to Stormont and Belfast City Hall.

PRE-SEMESTER ENGAGEMENT PROGRAMME

General student events to connect you with our campus and student life!

For more information:- <https://www.qub.ac.uk/sites/my-queens/pre-semester-engagement/>

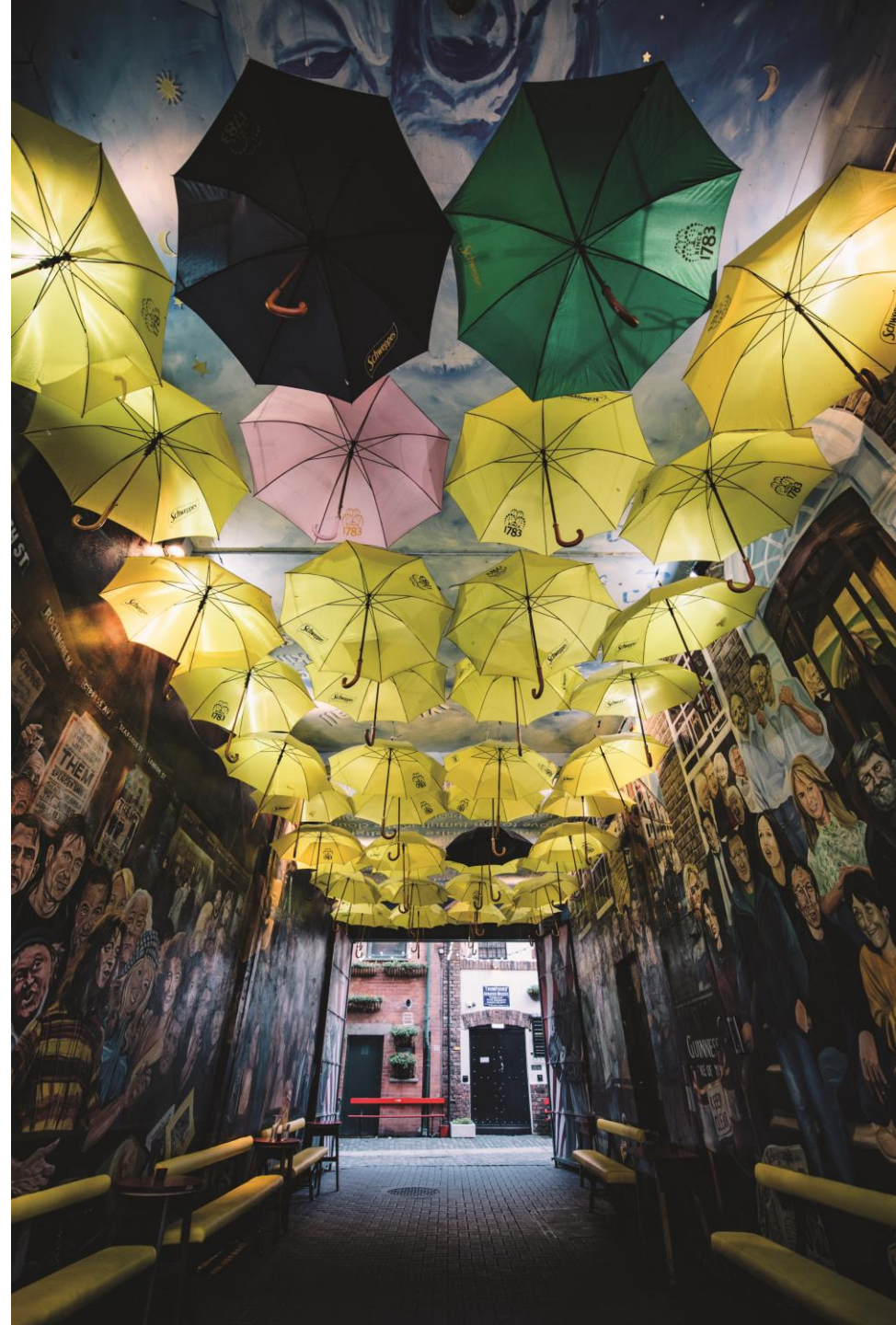
FALL IN BELFAST

- Fresh Autumnal weather
- Av. temperature is 11 degrees Celsius (52 Fahrenheit)
- Daylight hours – 08:30am to 6pm
- Pack rain jacket and warm clothing

WHAT'S ON

- Belfast International Arts Festival – 5 Oct to 6 Nov
- Gigs – Limelight, Ulster Hall, SSE Arena, Telegraph Building
- Sports Fixtures – Irish Football Association, Ulster Rugby, GAA, Belfast Giants Ice-Hockey and more

[ticketmaster.ie](https://www.ticketmaster.ie)





QUEEN'S
UNIVERSITY
BELFAST

ACCOMMODATION



YOUR HOME AT QUB – BT1

- 15 minutes walk from the University campus and 5 minutes walk from Belfast city centre.
- Rooms are all single occupancy with ensuite bathroom facilities, located in shared flats with a communal kitchen/common room.
- Your room will have a single bed, study desk, desk chair, wardrobe & shelf space, and an ensuite bathroom (toilet, sink & shower).
- Laundry and Reception facilities are located onsite.

www.qub.ac.uk/accommodation/student-accommodation/student-accommodation-belfast



BT₁ – Social Spaces and Utilities

We have some amazing social spaces here at BT1....

- Gym – We have a gym onsite with treadmills, weight machines, and classes taking place throughout the week.
- Coffee bar & Pool Tables - Our onsite coffee bar, open each evening and serving free tea & coffee, provides the perfect setting to meet new people & make new friends.
- Computer rooms
- Quiet study room
- Laundry – Our laundry room is located on the ground floor.



Maintenance – If you need a helping hand!

Whilst we hope that your time here at Queen's Accommodation runs smoothly, we know that sometimes things can go wrong!

If you find that something is broken, and needs to be repaired, our team are onsite 9am - 5pm, Monday – Friday, and are on call 24/7 for emergencies.

Emergencies are as follows:

- No heating
- No hot water
- Kitchen sockets not working
- Bedroom – all lights not working
- Front door or bedroom doors not opening, closing or locking
- Major leak



For general repairs/enquiries, you can raise a maintenance request on our website (<https://www.qub.ac.uk/accommodation/Online-Maintenance-Request/>) or by emailing maintenance@qub.ac.uk. For emergencies, please contact Reception.

Residential Life Team

The Residential Life Team are here to support you during your stay!

- Wellbeing Support – The **Residential Life Coordinators (RLC's)** are available to speak to you should you have any issues, for example if you are feeling lonely, homesick, or are struggling to adjust to university life.
- Social Support - The team organise a regular programme of social activities & trips, designed to help you make new friends, get to know Northern Ireland, and maximise your experience here in Queen's Accommodation.
- We also have a team of **Residential Assistants (RA's)**. They are students like you, who live in our halls of residence:
 - The RA's run a nightly drop-in service at the coffee bar, where you chat to them over a tea or coffee.

If you would like to talk to the Residential Life Team, please contact BT1 Reception!



Reception – here to help

Our Reception at BTI is open 8am-8pm, and we have security onsite overnight, meaning there is always someone on hand. Our staff are friendly & are here to help!

The team are your first port-of-call for all general enquiries and can link you in with any of other teams onsite. All post and packages are delivered to Reception for you to collect.

Contact our **Reception Team** :

- Phone - 0044 28 9097 6040 / 4525
- Email – accommodationlmsbt1@qub.ac.uk





QUEEN'S
UNIVERSITY
BELFAST

ENROLMENT AND REGISTRATION



ENROLMENT AND REGISTRATION

- You will receive 'Welcome Email' in early September
- Enrolment has 3 stages:
 - Online Registration
 - Modules and Induction
 - Matriculation and Collection of Student Card
- 12-16 September
 - Information session about enrolment for Study Abroad students
 - Meeting with an Adviser of Studies
 - Enrolment in person and collection of student card





QUEEN'S
UNIVERSITY
BELFAST

HEALTH, WELLBEING AND SUPPORT



ACCESSING HEALTHCARE

- UK Healthcare – Private
- Visiting students (6 months or less) use private healthcare cover
- Routine healthcare vs. emergency healthcare access

Types of health centre: GP, Pharmacy, Dentist, Hospital, Accident & Emergency (A&E)

You should only use A&E Departments for emergency treatment for serious illness or injury

Emergency number – call **999**

- Plan ahead for medication requirements and health requirements
- Pharmacy Services available close to campus – may be able to claim back through your private healthcare
- Check if current medication is legal in the UK and if not, bring a letter from your Doctor, particularly for travel
- Disclose any health support required: Accommodation and ahssabroad@qub.ac.uk



OUT OF HOURS SUPPORT

Counselling & Crisis support

- Lifeline: 0044 808 808 8000 or the Samaritans: 116 123
- Inspire Student Helpline 0044 808 800 0016 (24 hours a day, 7 days per week)

Hospital

- Kingsbridge Private Hospital 0044 28 90 667 878

Community and Campus Safety

- Police 999 (in an emergency), or 101 (non-emergency)
- Security 24-hour number on 0044 28 9097 5099.
- Queen's Accommodation: accommodation@qub.ac.uk or Elms BT9: 0044 28 9097 4525

CONNECT

Student Wellbeing

Web: www.qub.ac.uk/sgc/wellbeing

Email: studentwellbeing@qub.ac.uk

Drop In Service:

Monday - Friday, 9-5, One Elmwood Student Centre

Tel: 0044 7387546123

Inspire counselling – Email: hello@inspirewellbeing.org

Tel: 0044 28 9032 8474

Lifeline Helpline: 0044 808 808 8000

Interactive self help resources -

<https://www.inspiresupporthub.org/students/> PIN is QUB2019!

Student's Union - studentadvice@qub.ac.uk

Learning Development - lds@qub.ac.uk



OUR STUDENT SUPPORT

ONE ELMWOOD:-

www.qub.ac.uk/sites/Students/one-elmwood/

Your first stop for information, advice and guidance at Queen's

- Student Wellbeing Service
- Disability Services
- Learning Development Service
- Careers, Employability and Skills
- International Student Support
- Student Finance Office



ONE ELMWOOD – STUDENT CENTRE AND STUDENTS' UNION

There's a buzz happening around campus...and the focus is all on One Elmwood



COVID-19 UPDATES AND ADVICE

- Queen's Covid-19 Information for Students
www.qub.ac.uk/home/coronavirus-faqs/information-for-students
- Northern Ireland Government Guidance
www.nidirect.gov.uk/articles/coronavirus-covid-19-travel-advice
- Travellers coming to Northern Ireland do **not** currently need to:
 - complete a passenger locator form
 - show proof of vaccinations
 - take any pre-departure or post arrival tests



COVID-19 UPDATES AND ADVICE

- Northern Ireland Government Guidance
www.nidirect.gov.uk/campaigns/coronavirus-covid-19
- If you have symptoms, you should take a lateral flow test.
- If test result is positive – stay at home and avoid contact with other people for 5 days
- Testing to end isolation is no longer advised
- Vaccine and booster information also available on NI Direct website





QUEEN'S
UNIVERSITY
BELFAST

EDUCATION TRANSITION



Terminology

Some terms to become familiar with – you will hear these a lot

Modules - These are your classes. You will take 3 modules. A module normally equates to 20 CATS points (credits per module/class)

Lectures - Large group teaching, presentation delivered by Lecturer. Depending on the course, this could be 50-200 people

Seminars/Tutorials - Smaller group teaching, depending on the course, this could be 10-20 people

Independent Study - Not all study takes the form of formal teaching: own private study expected. You will also receive on-going reading lists, assessments, reports etc associated with many of your modules.

Assessment *The final mark for each module is on a scale from 1-100. Don't be shocked if you haven't scored over 90! Getting **70%+ here equates to a High Distinction/A/First Class Honours***

Podcasts to help adapt to Queen's Student Life

The Degree Abroad Pod Series

- Meet Queen's Academics from the US: Episode 6

https://open.spotify.com/episode/1JwKezPaek0AzlZwBs6AmS?si=dL668UhJTOKkTt_CnFKsqA&nd=1

- Study Abroad in Belfast Student Perspective: Episode 10

<https://open.spotify.com/episode/5E6of2mNqn6l4xID42Rvhy?si=9446dd07c6d64bdb&nd=1>



QUEEN'S
UNIVERSITY
BELFAST

NEXT STEPS



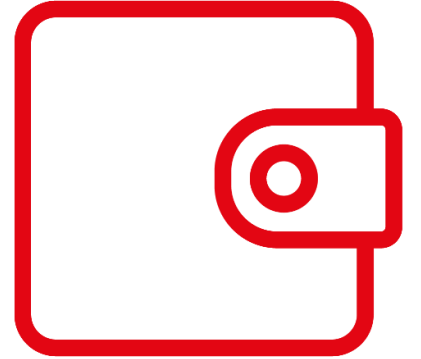
YOUR NEXT STEPS

- ✓ Accept your offer (double check visa selection) and make any support disclosures required
- ✓ Complete your accommodation application and make any support disclosures
- ✓ Complete AHSS airport arrival form **go.qub.ac.uk/GWairport**
- ✓ Familiarise yourself with your medical cover and think about prescriptions
- ✓ Familiarise yourself with current guidelines for travel and COVID

....watch **Derry Girls**...essential homework!



ACCESS TO MONEY ON ARRIVAL



It is important you arrive financially prepared for the first few weeks.

Options to be considered include:

- Monzo - <https://monzo.com/>
- Revolut – <https://www.revolut.com/cards>
- Apple Pay - <https://www.apple.com/uk/apple-pay/>
- Wise (TransferWise) - <https://wise.com/>

The University is **not** officially recommending use of any of these services. Refer to My Queens for further information:

<https://go.qub.ac.uk/banking-options>

Whilst safer to carry payment cards, it's always good to have some cash to hand – We use sterling/£GBP NOT EUROS

APPROX TYPICAL COSTS

Burger: £8/\$9.5

Pizza: £10/\$12

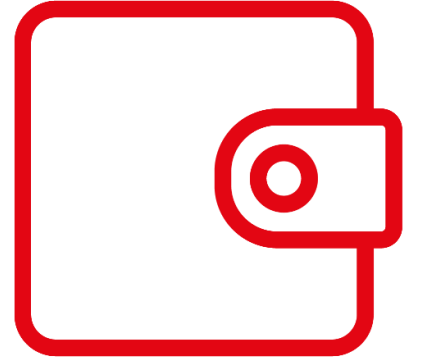
Coffee: £2.50/\$3

Bus Ticket to City Centre: £2/\$2.40

Flight to London: From £50 Return/ \$60

Gym Membership: From £16.50/\$20

Cinema Ticket: From £6/\$7.18



WHAT TO PACK

- ✓ Warm clothes / umbrella
- ✓ Useful gadgets
- ✓ Universal adaptor
- ✓ Things that remind you of home
- ✓ Any prescribed medication

WHAT NOT TO PACK

- ✗ Cutlery
- ✗ Restricted entry products based on [UK government regulations](#)
- ✗ Blankets and duvets
- ✗ Notebooks and stationery
- ✗ Too many toiletries
- ✗ Personal protection items



QUEEN'S
UNIVERSITY
BELFAST

KEY CONTACTS



KEY CONTACTS

BEFORE YOU ARRIVE

General queries or signposting:

The AHSS Abroad team: ahssabroad@qub.ac.uk

Visa or admissions queries:

The Global Opportunities Team: studyabroad@qub.ac.uk

Accommodation:

Accommodation team: accommodation@qub.ac.uk





QUEEN'S
UNIVERSITY
BELFAST

Q&A

