



QUEEN'S
UNIVERSITY
BELFAST

THE
GRADUATE
SCHOOL

The Graduate School

SEMESTER ONE PROGRAMME

September - December 2020





THE
GRADUATE
SCHOOL

YOUR EMPLOYABILITY LAUNCHPAD

WELCOME TO SEMESTER ONE AT THE GRADUATE SCHOOL

We are delighted to welcome you into the first semester of the 2020-21 academic year! Our Semester One Programme acts as a development guide to illustrate some of the many opportunities available to you. All of our activities, alongside [MyFuture booking guidance](#), can be found on our website at qub.ac.uk/graduate-school.

All of the training, workshops and events listed in this programme will be taking place online. Interactive elements of this document will help you to navigate these opportunities and act as a doorway into our digital classrooms. Work your way through our six development themes and sign up for any workshops that will be beneficial to you using the hyperlinks and buttons.

We started delivering events online in April 2020, and so far we've had over 1,000 students join us virtually. We've enjoyed finding new, innovative ways to keep our students connected while working remotely, and we even won an award for having provided the **Best Postgraduate Student Experience Initiative** through our virtual programmes!

As a member of our postgraduate community, you will become one of the exceptional local, national and international students who join us each year. The Graduate School will assist you to be a **Thinker, Innovator, Leader and Communicator** who is **Future-Ready**.



INNOVATORS



LEADERS



COMMUNICATORS



THINKERS



FUTURE-READY

These are our five development pillars, and they form the building blocks for everything that we do at the Graduate School. At the beginning of this semester, we'll be hosting a number of Postgraduate Skills Development Information Sessions through which our dedicated Consultants will introduce you to our [five development pillars](#), and help you to start thinking your development needs. [Sign up now to kickstart your postgraduate journey.](#)

We look forward to having you join us this semester.

The Graduate School Team

ACADEMIC ESSENTIALS

Get help to demystify, prepare for, and navigate your academic journey. Better understand what is required of you as a postgraduate student and develop the high-level skills you will need to succeed. Perfect your academic writing style, produce high-quality research and learn how to project manage your studies.

Need help with your writing?



Academic Support 1-2-1 Appointments (open to all postgraduates)

Every Wednesday morning *various time slots available, bookable via MyFuture

Better understand what is required of you as a postgraduate student in a one-to-one appointment with Abbie Kewley. These private consultations focus on your individual academic needs. Get valuable feedback on a piece of writing and become equipped to produce higher quality work.

UEA

All events marked with a 'UEA' sticker are funded by Queen's University and delivered by the University of East Anglia. Dr Eimear O'Connor will provide follow-up sessions for Queen's postgraduate students every Friday, from 10.00am to 11.00am, to allow students the opportunity to ask questions and generate discussion. These follow-up sessions can be booked via MyFuture.

Academic Writing Webinars for PhD Researchers UEA

What should a literature review do?

Tuesday 6th October, 7.00pm - 9.00pm,
Wednesday 7th October, 7.00pm - 9.00pm or
Tuesday 17th November, 10.00am - 12.00pm

Writing Effectively

Tuesday 13th or Wednesday 14th October, 7.00pm - 9.00pm

Academic Publishing

Tuesday 20th October, 7.00pm - 9.00pm

Writing and Structuring an Effective Thesis

Wednesday 21st October, 7.00pm - 9.00pm
Tuesday 27th October, 7.00pm - 9.00pm
Wednesday 18th November, 10.00am - 12.00pm

Conducting Your Research

Excel Essentials Series (open to all postgraduates)

Get to grips with Excel. This series will introduce you to Excel in various forms, including using statistical functions, analysing and managing data, and creating and editing charts to make your data more comprehensible.

Basic Statistics Using Excel

Content LIVE from Monday 2nd November! Follow-up Consultations on Monday 16th and Thursday 19th November, 10.30am - 12.00pm

Managing Data in Excel

Content LIVE from Monday 9th November! Follow-up Consultations on Monday 23rd and Thursday 26th November, 10.30am - 12.00pm

Excel Charts

Content LIVE from Monday 16th November! Follow-up Consultations on Monday 30th November and Thursday 3rd December, 10.30am - 12.00pm

Data Analysis in Excel

Content LIVE from Monday 23rd November! Follow-up Consultations on Monday 7th and Thursday 10th December, 10.30am - 12.00pm

Qualitative Research Series for PhD Researchers

UEA

A Comparison of Qualitative Methods

Tuesdays 3rd November, 7.00pm - 9.00pm, or 1st December, 10.00am - 12.00pm

Compare and contrast the aims, data collection preferences, analytic style, limitations and appropriate usage of four different qualitative methods in order to identify the types of research questions to which each method is best suited.

Qualitative Interviewing

Tuesday 10th November, 7.00pm - 9.00pm, or Wednesday 2nd December, 10.00am - 12.00pm

Consider three different types of interviewing (structured, semi-structured and unstructured), but with a particular focus on semi-structured or 'qualitative' interviewing. Discuss the nature of interview questions, the design and structure of an effective interview schedule and the mechanics of conducting a successful interview.

Analysing Qualitative Data

Tuesdays 17th November, 7.00pm - 9.00pm, or 8th December, 10.00am - 12.00pm

Using example data throughout, issues covered will include coding systems, how to choose extracts for analysis in a systematic fashion, the meaning and importance of interpretation, generalizing from qualitative findings and various write-up issues.

Using NVivo for Qualitative Research

Tuesday 24th November, 7.00pm - 9.00pm, or Wednesday 9th December, 10.00am - 12.00pm

This session will introduce students to the NVivo software package, which is designed to help in the organisation, management and analysis of qualitative data.

MORE: Reaching Your PhD Milestones, Mentoring & Teaching

Supporting you in reaching your PhD Milestones

Starting Your PhD

PGR Induction

Tuesday 6th October, 9.00am - 1.00pm

An information session providing key information for students beginning their PhD journey. Hear from your Postgraduate Student Officer and staff who can support you through your studies.

Differentiation and Annual Progress Review

Preparing for Differentiation and Annual Progress Review

Wednesday 25th November or Tuesday 8th December, 10.00am - 1.00pm

Learn how to prepare for your APR and gain insights into regulatory requirements. Create preparation strategies, identify common questions, and practise your delivery for these assessments. Open to PhD researchers in their first and second year.

Defending Your Thesis at the Viva

Preparing for Your Viva: Webinar

Wednesday 25th November, 7.00pm - 9.00pm

Better understand the oral examination process, how an examiner will assess your thesis, and get practical advice on how to prepare effectively. Open to PGRs at all stages of the PhD journey.

UEA

Preparing for the Viva (with Dr Lilian Simones)

Tuesday 1st December, 10.00am - 1.00pm

Gain insights into what the Viva is and its purpose and process. View a range of common Viva questions and identify strategies for answering them while practising your delivery. Open to second and third year PhD researchers.

Peer Review

How to Peer Review

Wednesday 2nd December, 10.00am - 1.00pm

Being a peer reviewer is an essential step for those intending to pursue an academic career, and as an early career researcher, it is vital that you familiarise yourself with the process. Gain insights that you can apply to your writing when working towards publication.

After Your PhD

On the Job: Securing Your First Academic Post

Tuesday 1st December, 7.00pm - 9.00pm

In a highly competitive world, getting a foot on the ladder and securing any academic post is difficult. This session will consider the need to establish an academic identity, how to recognise a 'gettable' post, application processes, and the structure and nature of academic interviews.

Preparing Impactful Research Proposals and Grant Applications

Wednesday 2nd December, 7.00pm - 9.00pm

This session will consider the writing of effective research proposals and the best ways to create a compelling 'case for support', considering the generation of a clear rationale, stating a defined set of research aims and questions, the proposal of a study (or series of studies), and appropriate methods and analyses.

[Back to Academic Essentials](#)

Develop Yourself as a Teacher and Mentor

Peer Mentoring Programme: Information Webinars

Tuesdays 13th and 20th October, 10.00am - 1.00pm

The purpose of peer mentoring is for late cycle postgraduate research students to assist and support new research students in their transition to research studies; providing an ongoing, student-centred induction process, as well as an improved learning culture and climate. By completing the Peer Mentoring programme, you will be eligible for Researcher Plus. Please check with your individual School to ensure that they are participating in the Peer Mentoring Programme.

An Introduction to Teaching for Postgraduate Researchers

Thursdays 29th October, and 5th, 12th and 19th November, 10.00am - 1.00pm

Are you a PhD student at Queen's considering how to improve your teaching skills? Do you want to learn more about how to become an effective teacher in Higher Education? Learn how to articulate specifications for learning outcomes, explain how to assess student learning, describe the differences between curriculum design and instructional design and understand the functions of, and distinguish between, formative and summative assessments. No previous teaching experience is required.

Teaching Skills: Webinar Series

Postgraduate research students are often required to teach at some point throughout their PhD. This webinar series is designed to provide guidance and training for researchers as they take on the role of the 'teacher'.

UEA

Preparing and Delivering Seminars

Tuesday 8th December, 7.00pm - 9.00pm

Learn how to prepare and deliver an excellent seminar. This session will focus on the importance of being prepared, laying out the ground rules for interaction, stressing the importance of engagement and discussion, appreciating the intellectual, social, and affective needs of the students, rendering the discussion concrete, and strategies for integrating student responses.

Preparing and Delivering Lectures

Wednesday 9th December, 7.00pm - 9.00pm

Lectures require careful preparation and a premium is placed on effective and dynamic delivery. This session will consider the main functions of a lecture and what makes a lecture excellent, before providing a step-by-step guide to preparation and delivery, including slide preparation and style, the commentary style and its relationship to the slides, and preparing the lecture theatre to maximise your impact.

Assessment, Feedback and Module Design

Tuesday 15th December, 7.00pm - 9.00pm

This session will consider the act of marking and the writing and delivery of feedback, along with consideration of how best to discuss and justify comments made and marks awarded; setting assessments; and the basics of module design, how to go about it, and what is generally required to design a strong module that is both interesting and intellectually challenging for the students.

[MORE: Technology and Library Skills, PG Skills Workshops](#)

Technology and Library Skills

These workshops are part of the wider IT training programme available through the McClay Library which offers you the opportunity to develop your technical skills. These sessions will be delivered by a team of information services and library staff.

Copyright and Your E-Thesis

Tuesday 1st December, 3.00pm - 5.00pm

Designated training for all Postgraduate Research (PGR) students who wish to gain an understanding of copyright and how it applies to their e-thesis. Since it is compulsory to upload your electronic thesis to Pure, all PGR students should attend this class.

E-Thesis Essentials

Part 1: Tuesday 17th November, 11.00am - 1.00pm

Part 2: Tuesday 24th November, 11.00am - 1.00pm

A two part course which is essential for final year PhD students, designed only for those who will complete their PGR study and will upload their e-thesis in next 12 months.

Maximising Your Research Profile: Insights, Tools and Possibilities

Tuesday 8th December, 11.00am - 12.30pm

Find out how to make your research accessible via Open Access Publishing; get your research noticed online using Queen's Research Portal, Twitter and blogs; and measure the impact of your research.

Missing a Tric(k)?: Bibliometrics and Almetrics

Monday 19th October, 10.00am - 11.30am

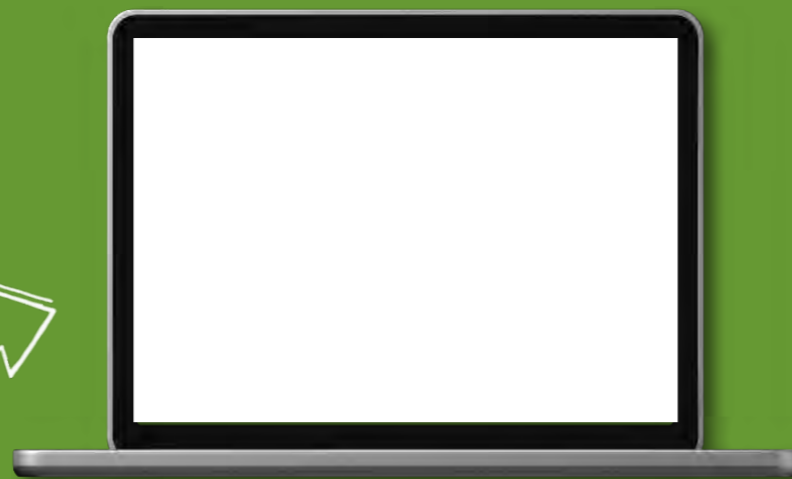
Learn about the use of bibliometrics as a measure of impact at (i) article (ii) journal and (iii) author level. Evaluate their strengths and weaknesses and understand their purpose and role.

Open Access - The Future of Academic Publishing

Tuesday 10th November, 11.00am - 12.00pm

This session will provide an overview of open access and its benefits, explain Plan S & the Wellcome Trusts' OA policy requirements, and outline the support and guidance that is available to Queen's researchers.

Click the button on the laptop screen to register and access the full list of library workshops on offer this semester, including discipline-specific workshops!



Back to Academic Essentials

Postgraduate Skills Workshops

Join Dr Eimear O'Connor for a series of workshops focused on key academic skills that will help you on your postgraduate journey. These workshops are part of a lunchtime series that will run each day from 1.00pm - 2.00pm. Each session can be booked individually.

Time Management and Staying Motivated

Monday 12th October, 1.00pm - 2.00pm

Studying at postgraduate level can be challenging in terms of managing your time and staying motivated. This one hour workshop will help you to understand how you work best and share tips on how to manage your time and increase your motivation.

Avoiding Plagiarism

Tuesday 13th October, 1.00pm - 2.00pm

Discussing the literature in your own words can be difficult. This workshop will help you to understand how to appropriately incorporate sources when citing, paraphrasing, summarising, quoting and referencing.

Criticality

Wednesday 14th October, 1.00pm - 2.00pm

Criticality in an academic setting involves utilising different viewpoints to assess an argument or theory. This workshop will teach you how you can apply critical thinking, reading, and writing to all aspects of your studies.

Academic Writing: Sentence Mechanics and Punctuation

Thursday 15th October, 1.00pm - 2.00pm

There are always ways we can improve the clarity and style of our writing. This workshop will present the fundamentals of academic writing including punctuation, verbs, pronouns and sentence structure.

Academic Writing: Developing Your Ideas and Structuring Your Writing

Friday 16th October, 1.00pm - 2.00pm

While no two pieces of writing are the same, several components make up the structure of a typical essay, dissertation or thesis. This workshop will look at how to develop ideas and how to plan and structure your writing.



PERSONAL & PROFESSIONAL DEVELOPMENT

How well do you know yourself? Join one of our professional skills programmes to increase your awareness of how you make decisions, manage and express emotions and work as part of a team. Join one of our leadership programmes to apply your skills to a real world challenge and gain Graduate or Researcher Plus accreditation.

Introduction to Project Planning Series

Just like a house, every project needs the right building blocks in place to be successful. Join us for a series of webinars to help you understand the key processes in successful project management, from initiation to delivery.

Introduction to Project Planning (Part 1): Establishing Foundations

Monday 26th October, 1.00pm - 3.00pm

Like houses, projects should not be built on sand. This session examines how to initially identify the building blocks for a successful project.



Introduction to Project Planning (Part 2): Scoping the Project

Monday 2nd November, 1.00pm - 3.00pm

This webinar builds on the previous topics to begin to craft the scope or the outputs of the project. It considers methods for: identifying and managing expectations; establishing and articulating the rationale or purpose driving a project; and explores methods of defining critical success criteria upon which our work will be judged.

Introduction to Project Planning (Part 3): Creating the Plan

Monday 9th November, 1.00pm - 3.00pm

This webinar looks at the process of creating a rigorous and robust project plan. Having defined the purpose, requirements and expectations in previous webinars, we now look at identifying the tasks required to complete the project, before considering sequencing and scheduling the activities.

Researcher & Graduate Plus: Information Sessions

Wednesday 21st October

Graduate Plus: 11.00am - 11.40am

Researcher Plus: 12.00pm - 12.40pm

Researcher and Graduate Plus are a great way to have your extra-curricular skills and activities recognised and accredited by Queen's, making it easier for you to demonstrate these to employers. Join us for information on how to apply.

Unlock the Power of Your Personality

Thursday 22nd October or Wednesday 4th November, 11.00am - 3.00pm

The Myers Briggs Type Indicator (MBTI) is used to determine different strengths and types of personalities. At this virtual workshop you will find out how it works, the benefits of knowing your type, and how it can help you communicate more effectively in your study and work.

Building Your Emotional Resilience

Monday 2nd November and Wednesday 16th December, 10.00am - 1.00pm

In these uncertain times, it can be a real challenge to maintain our focus, manage our stress, and try to balance the emotional, physical and mental demands being put on us. This webinar will help you to unpack how certain feelings can affect how you develop resilience, and give you a practical framework with personal strategies to enhance your emotional resilience.

1-2-1 Coaching: Personal Effectiveness and Resilience

*Monday afternoons *Various time slots available.*

To support students that have taken part in our Master Your Leadership programme or Emotional Resilience Workshops, the Graduate School offers individual coaching support that focuses on helping you develop your personal effectiveness and resilience. You can book a 30 minute slot with one of our dedicated consultants, Caroline Dobson or John Mackel, via MyFuture.

Coaching Skills for Leaders

Tuesday 1st December, 10.00am - 1.00pm

Open to postgraduate students that have some form of supervisory/mentoring role, the aim of this webinar is to develop coaching skills within a leadership context that can then be used to help others to grow, develop and achieve success. Gain an understanding of the fundamental aspects of coaching and reflective learning, and discover the skills of questioning, listening and reflecting.

Tomorrow's Leaders, Today

Thursday 12th November, 10.00am - 1.00pm

This virtual leadership workshop will help Doctorate students to develop and enhance their personal leadership skills, build their emotional resilience, and grow their networks. You will complete the Kouzes and Posner 360° Student Leadership Challenge (LPI) that will help you to tailor a personal development plan.

Project Management and Your Research

Thursday 29th October, 10.00am - 1.00pm

This virtual workshop will help Doctorate students to develop and enhance their understanding and application of project management principles and tools to scoping, planning, implementing and evaluating their research and studies.

Future Ready

MORE: Read about our flagship leadership programme for Master's Students & your chance to get a Chartered Management Institute Accredited Level 7 Qualification!



MASTER YOUR LEADERSHIP



Develop Yourself as a Strategic Leader!

The Master Your Leadership programme is designed to help you develop a range of core skills for today's job market. Complete the Kouzes and Posner 360° Student Leadership Challenge (LPI) which will help you to tailor a personal development plan built around the five practices of exemplary leadership. Across four days of training, take on a real-world employer challenge; an experiential team based activity to create solutions and present back to the employer, developing your skills of creativity, innovation, problem-solving, communication and leadership.

Take part this semester...

Cohort 1: Tuesdays 20th & 27th October, 3rd & 10th November

Cohort 2: Wednesdays 21st & 28th October, 4th & 11th November

Cohort 3: Wednesdays 18th & 25th November, 2nd & 9th December

Cohort 4: Thursdays 19th & 26th November, 3rd & 10th December

Previous employers who have presented employer challenges include:



Back to Personal & Professional Development



CHARTERED MANAGEMENT INSTITUTE ACCREDITED LEVEL 7 QUALIFICATION

The Graduate School, in partnership with the Chartered Management Institute (CMI), offers you a unique opportunity to gain a professional Level 7 qualification in Strategic Leadership, Project Management and Entrepreneurial Practice. Enhance your employability and become an affiliate member of CMI with access to a library of online resources. The qualification includes both taught and assessed elements over two modules. **Course fee: £995.**

Register your interest for CMI in the next academic year now via gs.cmi@qub.ac.uk.

Strategic Leadership

This qualification helps you understand the complexities of leadership from an individual and organisational perspective. Work in multidisciplinary groups to carry out challenges which will allow you to identify your leadership skills and see how they are applied within the workplace.



Entrepreneurial Practice

Develop creative skills and the know-how to bring viable ventures to life. Grow your creative confidence and embrace mindsets of experimentation and radical collaboration to solve real life community challenges.

**This module is running in Semester One! Apply now to take part on 9th, 16th, 17th, 23rd and 24th November.*

*Strategic Management Project

Understand the key processes in successful project management from initiation to delivery. Learn how to manage projects professionally and translate your personal inspiration into effective operational performance. This module will teach you how to construct a project plan and guide you through the processes of successfully implementing that plan.

COMMUNICATION AND IMPACT

What is research excellence if you don't know how to communicate it effectively? Take time this semester to learn how to talk about your research and its impact. Challenge yourself to think more innovatively, grow your entrepreneurial mindset and start to apply your creative skills to all areas of your work and life.



Tell Your Research Story Series

PGR

In Articles for Publication

Wednesday 21st October or Thursday 10th December, 10.00am - 1.00pm

Want to get published? Learn how to engage people in your research through effective communication; gain insights into the structural components of scientific papers and writing style; develop strategies to overcome difficulties in writing articles for publication.

At Conferences

Wednesday 28th October, 10.00am - 1.00pm

A winning conference proposal begins with the ability to communicate your research and its relevance. Learn how to help others engage with your research, explore the main elements of a successful conference submission, and use your communication toolkit to deliver.

Ethics in Research (Promoting Trust and Credibility)

Wednesday 4th November, 10.00am - 1.00pm

Ethics play a vital role in your research. Ensure you understand the processes and procedures needed to avoid potential pitfalls. Explore ideas and regulations around consent, participant rights, data handling and how to secure ethical approval.

To The Media

Wednesday 11th November, 10.00am - 1.00pm

Communicating research findings to audiences outside the academic community, media or general public, is a vital part of researcher's work. Gain insights into the world of the media and explore what type of content is deemed newsworthy. Get guidance on how to use social media for impact and for advancing your research agenda through a coherent communication strategy.

Develop Your Entrepreneurial Skills

Commercialising Your Research

Thursday 26th November, 11.00am - 1.00pm

Have you ever wondered if you could make a living out of your big ideas? Explore how to make money from your ideas and how to ensure they are protected. We'll cover commercialisation; from what it is to how you can benefit from it, what funders and investors expect to see, the role of Intellectual Property, and how Queen's can support you in turning your research into a real-life commercial project.

Future Ready

Make It Happen Funding

Are you working on a business idea but need funding to make it a reality? You can apply for the 'Make it Happen Fund' and access up to £500 to help start or diversify your business! The fund is available to all current postgraduate students at Queen's.

In need of some inspiration?

Great Creators is a podcast series by the Graduate School in partnership with Belfast Design Week. Sharing the diverse stories of entrepreneurship in Northern Ireland, it features start-ups, community-led projects and established businesses which together make up the rich innovation ecosystem.

Great Creators highlights that opportunity is all around, if you know where to look for it!

[Click here for all episodes!](#)

Innovation After Hours is a chance to hear from people who are interested in innovation and entrepreneurship and to be inspired by those working on interesting ventures.

October's guest speaker is keynote speaker, facilitator, broadcaster and entertainer, David Meade! David has become one of Europe's most dynamic, engaging and sought after keynote speakers with a client list that features some of the world's most successful organisations. Join us online on Thursday 1st October to hear his inspiring story!

Keep an eye out for more inspiring speakers coming this semester!



This event is open to Queen's students, staff and the general public!

CAREERS AND EMPLOYABILITY

"Tell me about a time when..."

Are you looking for support to navigate your options? Explore the range of dedicated careers support available to you and begin to build your networks.

Ace the Application Process!

How to Complete a Competency Based Application Form

Friday 23rd October, Thursday 19th November, or Monday 14th December, 11.00am - 1.00pm

Competency based questions can often throw you if you are not well prepared. This online presentation will provide you with examples of competency based questions and give you the opportunity to practise your technique with your peers.

How to Write a Successful CV

Mondays 19th October, 16th November, or 11th December, 11.00am - 1.00pm

Make sure your CV is employer-ready. This presentation will provide you with a guide on how to market yourself on paper whether you are just starting your CV or want to update it.

How to Start Your LinkedIn Profile

Mondays 26th October or 30th November, 11.00am - 1.00pm

Did you know that 90% of employers use LinkedIn to recruit new employees? LinkedIn is an invaluable online tool for you to network with professionals and alumni. This presentation is aimed at students who don't yet have a LinkedIn profile, and will give you the chance to start creating one.

10 Tips for Acing Your Next Virtual Interview

Friday 30th October, Monday 23rd November or Wednesday 16th December, 11.00am - 1.00pm

Do you have an interview coming up via video conference call and want to know how to prepare? In the current climate, virtual interviews have become more prevalent. Find out what you need to consider when being interviewed virtually and how you can make a good impression through a screen.

Practise Your Interview Skills

Thursdays 5th or 12th November, or Wednesday 7th December, 11.00am - 12.30pm

A unique opportunity to take part in a role play group exercise to practise your interview skills. In this virtual session, you will join a group of up to five students whereby each of you will be invited to play the role of interviewer, interviewee and observer. The session will be facilitated by a qualified career consultant.

Limited Spaces Available!

1-2-1 Careers Guidance

A 30 minute confidential career consultation on career choice, job hunting, LinkedIn profile, further study and CV guidance. Postgraduate Taught students should book with Joan Connolly, and Postgraduate Research students with Dr Lilian Simones. To book your appointment via MyFuture, please click on 'Book an Appointment' and choose 'Careers Appointment' from the drop-down list.

Future Ready Programme for Postgraduate Researchers

Future Ready

Postgraduate Research Students who attend all twelve workshops (equivalent to six full days of training) integral to the Future Ready programme will be eligible for the Researcher Plus award.

Your Academic Cover Letter

Tuesday 29th September, 10.00am - 1.00pm

Your Non-Academic Cover Letter

Tuesday 13th October, 10.00am - 1.00pm

Your Academic CV

Wednesday 7th October, 10.00am - 1.00pm

Your Non-Academic CV

Tuesday 20th October, 10.00am - 1.00pm

Succeeding in Academic Interviews

Tuesday 27th October, 10.00am - 1.00pm

Succeeding in Non-Academic Interviews

Tuesday 3rd November, 10.00am - 1.00pm

Writing Effective Funding Proposals

Tuesday 10th November, 10.00am - 1.00pm

How to Find a Job

Tuesday 17th November, 10.00am - 1.00pm

Tomorrow's Leaders, Today

Thursday 12th November, 10.00am - 1.00pm

Project Management and Your Research

Thursday 29th October, 10.00am - 1.00pm

Employer Engagement Event

Tuesday 24th November, 10.00am - 1.00pm

Commercialising Your Research

Thursday 26th November, 11.00am - 1.00pm



COLLABORATION AND PARTNERSHIP

The Graduate School supports partnerships between postgraduates, local businesses and enterprises for social innovation. There are a range of bespoke networking, employer and community challenges to help postgraduates realise their research impact and to contribute in a practical way to shaping a better world. Get in touch today to see how you can get involved via graduateschool@qub.ac.uk.

Our list of partners is always growing! Visit our website to find out more about our partners and how we are continuing to work collaboratively across a range of areas.

Community Partners



Design for Community Impact

Coming Soon!

Want to make a real difference in the community? Design for Community Impact is a deep dive into Social Innovation. It's a highly interactive, collaborative, action learning experience in which postgraduate students will engage with community partners and each other to explore and co-design solutions to real community-based challenges in North Belfast.



The Graduate School won Stakeholder of the Year at the Social Enterprise Awards 2019.

We remain committed to designing programmes that spark and support social enterprise, connecting students to the local community and building lasting partnerships.

Industry Partners

CPANI Postgraduate Mentoring Scheme: Information Session

Monday 9th or Friday 13th November, 12.00pm - 12.30pm

The Graduate School in partnership with the Commissioner for Public Appointments Northern Ireland (CPANI) offers a unique opportunity for postgraduate students to be professionally mentored by a Public Appointment Commission body. Public bodies make important decisions that shape the quality of our lives, from funding the arts, sports and science to providing essential healthcare and safeguarding the environment as well as promoting human rights and delivering justice. Understand the potential impact your research could have while you grow your networks and enhance your employability. These information sessions will allow you to assess if the programme is the right match for you.

Employer Engagement Event

Tuesday 24th November, 10.00am - 1.00pm

The Graduate School and the Postdoctoral Development Centre at QUB are hosting an online employer engagement event where doctoral students and post-doctoral staff will have an opportunity to network and interact with a range of potential employers. Representatives from both academic and non-academic backgrounds will discuss what employers need from researchers today and how academics can transfer their skills to non-academic work environments.

Future Ready

In previous years, industry representatives at the Employer Engagement event have included:



Postgraduate Partners

Postgraduate-Led Initiatives

The Graduate School has funding available to assist current postgraduate students in organising academic events and cultural interventions which work to bring together the wider communities within both postgraduate taught and research student bodies at Queen's. This funding is allocated for initiatives developed and delivered by postgraduate students to help enrich the experience of the postgraduate community. The programme supports skills development such as leadership, effective communication and project management by providing students with the opportunity to manage events and budgets through first-hand experience.

POSTGRADUATE COMMUNITY AND WELLBEING

Opportunities to connect with other postgraduate students, to support each other and to take time to look after your wellbeing. Join our Microsoft Teams groups to keep in touch!

Shut Up and Write

Every Monday and Friday, 1.00pm - 4.00pm

Shut Up and Write is a movement that started in San Francisco as a way for writers to structure their time and connect with others. Using the pomodoro technique, carve out dedicated writing time and make progress on your assignments. Write for 3 hours in a supportive environment, and relax and connect with your fellow students during break periods!

Postgraduate Book Club

Every Tuesday, 5.00pm - 7.00pm

Reading groups are great for intellectual stimulation and expanding personal knowledge, but most importantly they are a social experience. Discover new books and new people by joining a group of fellow postgraduates to expand your reading repertoire and share ideas virtually!

Mindful Meditation

Every Wednesday, 2.30pm - 3.30pm

It can often be easy to rush through life without stopping to notice everything around you, especially in the current climate. Paying more attention to the present moment, to your own thoughts and feelings, and to the world around you can help to improve your mental wellbeing. Join us for weekly mindfulness classes with qualified instructor Orla Wallace.

Rejuvenation Yoga

**Various dates and times. See hyperlink for more details.*

A typical 'Rejuvenation Yoga' class with Instructor Gill will cover yoga postures, breathing practices, deep relaxation, meditation and revitalisation; helping to break cycles of stress and anxiety in a welcoming and supportive environment. These online classes will take place via Zoom. Please register via MyFuture.

Connect with our Postgraduate Community online!



Your Weekly Update

Every Tuesday, you will receive a link to our Weekly Update in your QUB inbox. This weekly newsletter is your chance to stay up-to-date with the latest news and events happening at the Graduate School and further afield. We use this space to share important information with you, and highlight opportunities of interest to postgraduates. Don't miss it!

Community Assistant Blogs

Our Postgraduate Community Assistants write regular blog posts to keep you up-to-date with what they're up to and share useful hints & tips for navigating postgraduate study! Keep an eye out on your Weekly Updates and our social media channels for regular posts, or join our weekly community and wellbeing events to get to know them personally.

Graduate School Social Media

Make sure to follow us on social media to stay up-to-date with news and events, and get involved in our competitions and initiatives. Click the icons below to access our pages!



Use the hashtag #TeamGrad to connect with us!

Facebook icon @QBSUPostgraduate

Twitter icon @QBSUofficerteam

TASHA MONTGOMERY

Hi, I'm Tasha, your Postgraduate Student Officer for 2020/21!

My role in the Students' Union is to represent you, your interests and give you a voice, to ensure your needs are met within both Queen's and the SU.

Please do not hesitate to get in touch if anything arises. I'm holding virtual drop-in sessions (until it's safe to meet in person) online on Tuesdays. If there is anything I can support you with, please don't hesitate to send me an email at su.postgraduate@qub.ac.uk to arrange a one-to-one on Microsoft Teams.

I'm currently working with both the Graduate School and the SU to find new ways to connect PG students together virtually during this semester so keep an eye out for more information coming soon.

I am proud to be able to work with two amazing Part-Time Student Officers - **Postgrad Research and Postgrad Taught.**

These Officers help represent this diverse postgraduate community and ensure important issues are raised.

They can be contacted by email at su.pgresearch@qub.ac.uk and su.pgtaught@qub.ac.uk

QBSU.ORG

I'M HERE TO HELP & REPRESENT YOU...



POSTGRAD AWARDS 2020

We're proud to announce that the Graduate School at Queen's University Belfast are the Best PG Student Experience Initiative winners at the Postgrad Awards 2020!

Awarded by FindAMasters FindAPhD

Queen's College, Belfast. New Library and Reading room

Stay Connected This Semester...

028 9097 2585

graduateschool@qub.ac.uk

