



Legacy of Landscape: The People & Heritage of Lough Erne

September 2021 Newsletter

Hi Everyone, we would like to start by thanking you for signing up to this new and exciting project! We are pleased to be working with the [Lough Erne Landscape Partnership](#) (LELP) who have provided us with the opportunity to collaborate on this two year community programme of heritage projects. Our work at Queen's University closely aligns with the LELP strategic objectives, these include engaging communities with their unique cultural and built heritage, to celebrate it, and be physically involved in it through place-based learning activities. Our key objective is to liaise and connect people with their unique landscape and, crucially, to empower the local communities around Lough Erne to set the agenda for how they protect and interpret their heritage landscapes.

There are 5 key heritage studies within this development programme that are focused around themes of:

- Memory Map: Life on Lough Erne
- Studying Vernacular Buildings
- Enniskillen: The Development of the Island Town
- Mapping the Built Heritage of the Islands
- People, Place, Power & Pageantry: Exploring Fermanagh in the time of the Maguires

Contents

About us	p.2
News from the Lough Erne Landscape Partnership	p.3
Teaching Resources: How you can get involved!	p.4
Latest News	p.5-6
Vernacular Field Study Days	p.7
Coming Soon! Excavation Enniskillen "BACKSTREETS" 11 th – 20 th October	p.8
Coming Soon! Oral History Roadshow Day 23 rd November 2021	p.9
Going forward into 2022	p.10





About us

These 5 projects are focussed on discovering, celebrating and preserving the culture and traditions of the Lough Erne region, both past and present.

Supported through funding from the [National Lottery Heritage Fund](#), The Community Foundation and the Lough Erne Landscape Partnership this innovative heritage programme will be delivered in collaboration with the [Centre for Community Archaeology](#) (CCA) and the [Centre for Data Digitisation and Analysis](#) (CDDA) at Queen's University Belfast. Please follow some of these links to read more about the Centre's involved.

We are grateful for the continuing support of the team at the Lough Erne Landscape Partnership and the ongoing advice from Catherine Scott (Fermanagh & Omagh District Council – Fermanagh County Museum), Ronan McHugh (Historic Environment Division, Department of Communities) and all those from the Lough Erne region who continue to be so generous with sharing their knowledge, their time and enthusiasm.

This exciting heritage programme focusses on the delivery of 5 distinct projects – working closely with the communities around Lough Erne to explore the stories and heritage of the past, and to make sure that we find innovative ways to celebrate the unique cultural traditions, buildings, industries and people of the Erne.

We will be working closely with local groups and individuals in the region to help us explore each of the topics in the programme, and we would like you to join us on this journey. Please use every opportunity to get involved – this newsletter will provide details of several upcoming events, activities and training courses that you can participate in.

We look forward to hopefully meeting you in person at one of our future events.

The Queen's University Team



News from the Lough Erne Landscape Partnership

We are really pleased to welcome you to the first newsletter of this exciting two year project that will help us to explore the Legacy of Landscape - The People & Heritage of Lough Erne. Through this project we aim to bring together the expertise of various specialists in the field of built and cultural heritage to work with ourselves and the communities around Lough Erne to identify, promote, conserve and celebrate some of the unique heritage features and stories of this area.



Elmarie Swanepoel,
Programme Manager

We are very grateful to be able to work with our advisory partners at the Enniskillen Museum, the Heritage Environment Division and the expertise of the team at Queens University Belfast.

This project however will not be successful unless we work closely with our local community – local people are the ones who love and know the stories, who care for and protect our special buildings and heritage features and who keep the traditions alive that makes Fermanagh such a unique and wonderful place to live.



Hazel Long,
Heritage Project Manager

Please get in touch - Elmarie.Swanepoel@rspb.org.uk /

Oral History

Oral history is a powerful resource in County Fermanagh that can help us understand how our ancestors lived in the recent past. As such, we place great importance on the collection of oral testimony from across the county as part of our programme. To achieve this objective, we recognise that training is required for volunteers and we have designed an online campus specifically to enable participants to learn how to conduct and record oral history interviews. Securing oral histories for future generations is an important part of our remit and to facilitate this we intend to embed the collected narratives into an interactive Memory Map that will showcase the unique story of Lough Erne, while linking diverse themes by both people and place.

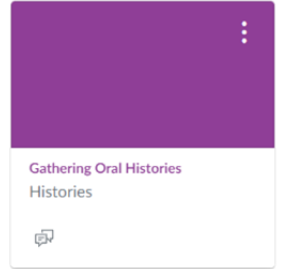
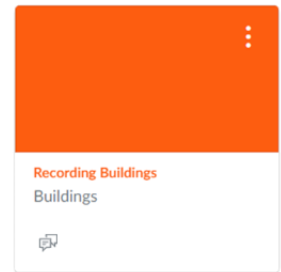
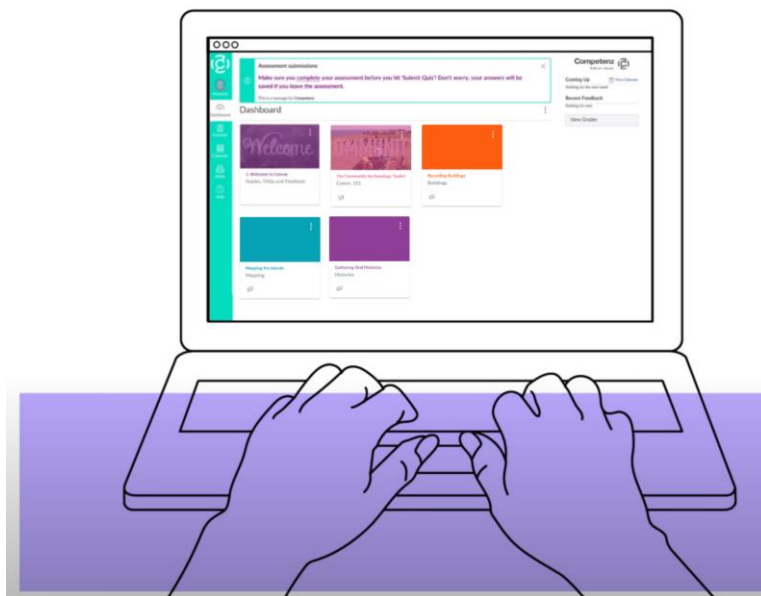
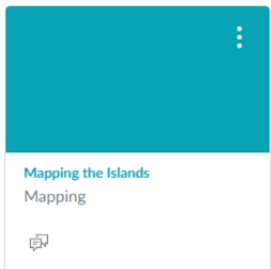
To register as a volunteer please visit <https://lelp.org.uk/heritage-volunteer-opportunities-training> OR contact Elmarie.Swanepoel@rspb.org.uk

We have also inserted individual registration links and contact information for our up and coming events through November 2021!



Teaching Resources: How you can join in!

Lough Erne Online Heritage Campus



Due to the continuing Public Health Crisis everyone has had to move to new ways of communicating and learning, this project has successfully embraced these new technologies, thus enabling continued learning and conversations in the virtual world!

The LELP Online Heritage Campus is a free online learning resource which is built on the CANVAS virtual learning platform utilising the expertise developed with our flag-ship and innovative Community Archaeology Toolkit. Volunteers who engage with the various projects are enrolled in the campus and can interact with a series of bespoke educational resources generated to meet the learning outcomes of each of the place-based project activities.

[Follow this link to Get Involved!](#)

- Gathering Oral Histories - Check out this [Oral History Step-by-Step-Guide](#)
- Studying Vernacular Buildings
- Community Archaeology
- Mapping the Islands

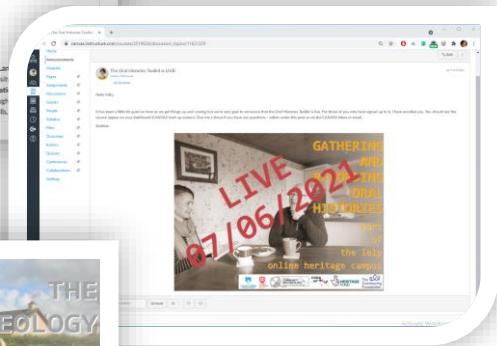
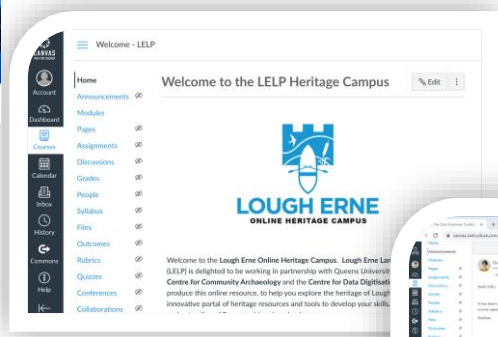


Latest News

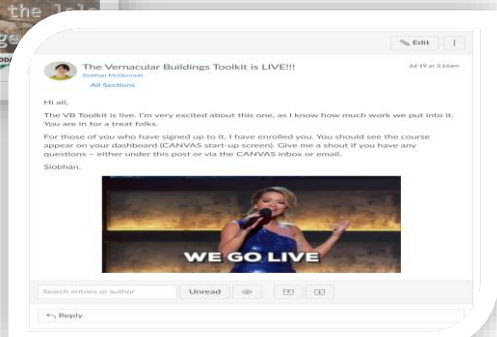
The project had a virtual launch on the 19th May 2021, with guest speaker Ciaran McMenemy – Fermanagh native, author and actor. Please see some of the nights highlights...



If you missed it, please see the highlights of our 'Study of Vernacular Buildings Online Launch 5th July 2021



We have now completed three of our four online toolkit modules and assignments to support subject upskilling and 'work in the field'. All of these courses begin with a step-by-step Welcome Guide and are led by a Subject Expert. The advantage of this online toolkit is that you can learn, chat live, ask questions and research all in one place, with the promise of taking your knowledge out into the field....





Some Responses

We want to hear from you, thank you for the continuing feedback:-

VLE Oral History Gathering

“Learning with the Oral History Toolkit has been brilliant. The tutors are supportive and you can work through the modules at your own pace. I have learned so much and I can't wait to put the learning into practice.”

“The oral histories toolkit has been really interesting. You're encouraged, not pressured, to learn and the tutors have made the work engaging!”

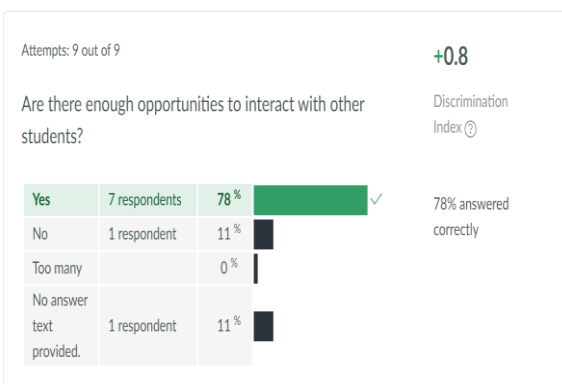
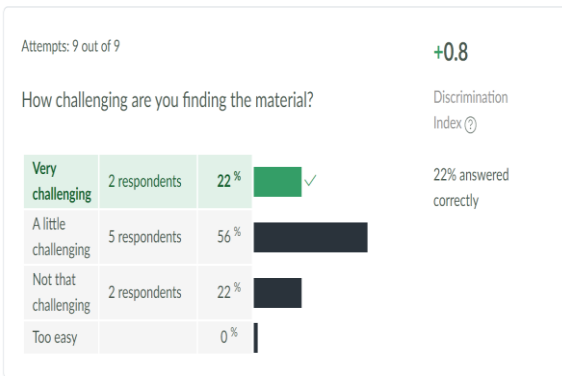
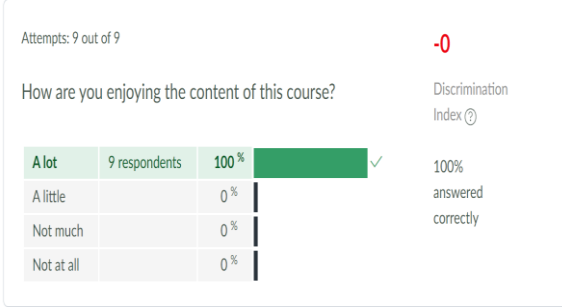
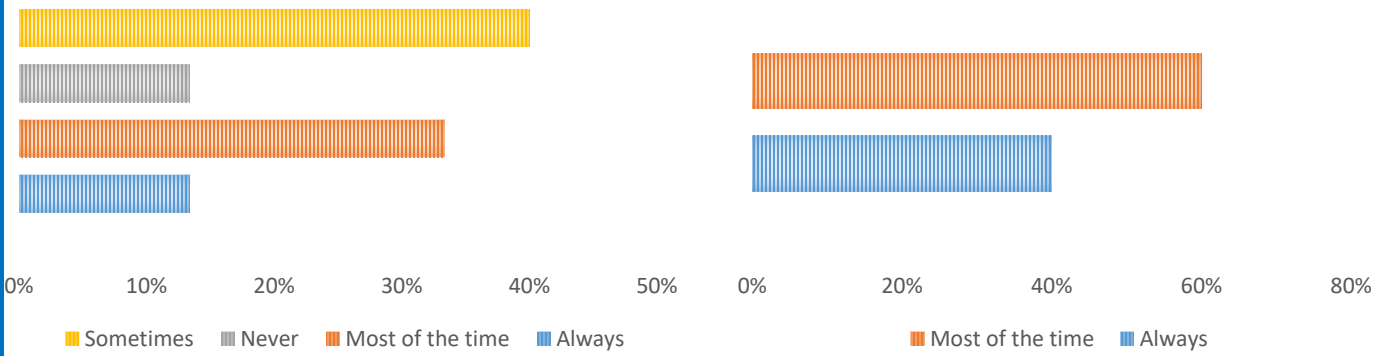
“I am a little behind but enjoyed the materials this week a lot. I haven't had any interaction but that's probably because I am catching up and don't really mind.”

VLE Vernacular Building Study

Question: When I think about the term ‘the vernacular buildings of Fermanagh’, I am confident I understand it?

Pre Course

Post



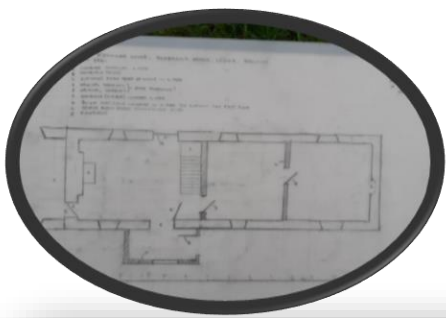


Vernacular Field Study Days

By the time you have completed your four-week online toolkit module, you will have learned the basics of:

- Vernacular architecture – what is it, and how do we identify it;
- How to **'read'** a vernacular building – what to look for and recognise;
- How to **photograph** a building;
- Creating a **sketch plan** of a building;
- How to do **desk-based research** on your building including mapping;
- How to prepare a **buildings survey report** including drawings;
- Proper **Health & Safety** in the field and how to implement Risk Assessments

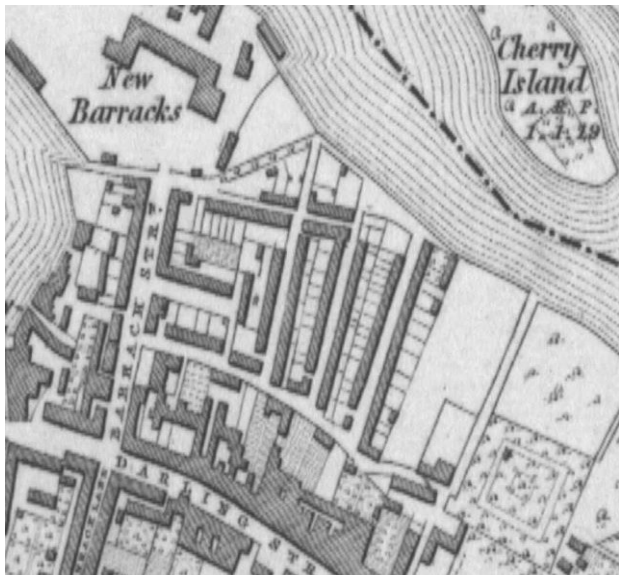
We conducted a series of building surveys from the 9th to 20th August 2021 with 11 participants who had completed the LELP Online Vernacular Study Module, a Big Thank you to them! This was a well informed cohort, who brought their taught understanding and insight with them into the field. We surveyed several sites e.g. McManus Homestead, McGovern Cottage, Legnabrocky Cottage, O'Connor House and Monaghan Cottage, reports showcasing this work will be delivered later in the year..





Coming Soon! Enniskillen Excavation 11th October – 20th October

The CCA have been at the heart of the development and delivery of place-based community archaeology within Northern Ireland, over the period 2015 to 2021, we have worked with approximately 22 Community Based Excavations!



1st Edition Ordnance Survey Six-inch Map (1930s)

Several sights in Enniskillen were identified for a community excavation, however we have decided to use the excavation to explore the rich history of the ENNISKILLEN BACKSTREETS!

Limited places will be available to participate in the dig, so please let us know as soon as possible if you would be interested. 2 hour timeslots will be available during the afternoons of 12 – 15 October and the following week 18 – 21 October (2 – 4 pm).

To book your place:

Elmarie.Swanepoel@rspb.org.uk
/ 077 0250 8777





LOUGH ERNE
LANDSCAPE PARTNERSHIP



Coming Soon! Oral History Roadshow Day 23rd November

On the 23rd of November 2021, *venue to be confirmed in Enniskillen*, we would be delighted if you would come along and hear about the project and the many interesting opportunities to participate.

This event will look to bring everyone together to talk about the five projects and maybe learn some more useful tips on Oral History Gathering techniques and chat with the Team. You will have the opportunity to refresh your learning from the online module, to put your skills into practice and get the opportunity to undertake a recording if you so wish.

Many of the oral histories that we are hoping to record will make their way onto the online Memory Map: Life on Lough Erne, were we hope, with you, to collect stories from around the Erne. To support this research we have developed an online toolkit were some of you have already taken part in this four-week module.

To Register for this event please contact Elaine Reid

Email - Elaine.Reid@qub.ac.uk

Telephone Number 079 3424 2423



**GATHERING
AND
RECORDING
ORAL
HISTORIES**

part
of
the help
online heritage campus



Going Forward into 2022

THE ONLINE CAMPUS TOOLKIT will continue to be used as a training tool in 2022

MEMORY MAPPING: LIFE ON LOUGH ERNE

oral history gathering/recording will continue through the lifecycle of the project

THE STUDY OF VERNACULAR BUILDINGS

second season of surveying to be conducted in spring to autumn on a monthly basis to continue the training of a volunteer surveying team that can then conduct independent local surveys .

PEOPLE, POWER, PLACE & PAGEANTRY

a second community-based archaeological excavation to be conducted in the Lisnaskea landscape in early 2022 as part of an investigation into the Maguire lordship of Fermanagh in the medieval period.

MAPPING BUILT HERITAGE OF THE ISLANDS

this project will identify and map a selection of previously occupied islands on the lough and will aim to investigate what life was like for the people who lived on them .

LEGACY PROJECT: MEMORY MAP – LIFE ON LOUGH ERNE

collating the results of the five projects together for curation as an online GIS-based resource.