

Using Intervention Mapping to adapt a sexual health intervention for adolescents in southern Africa

Dr Áine Aventin

Joint Public Health Conference

27th November 2019



**QUEEN'S
UNIVERSITY
BELFAST**

**THE CENTRE FOR
EVIDENCE AND
SOCIAL INNOVATION**

Overview

- ▶ The value of intervention adaptation
- ▶ How Intervention Mapping (IM) can help
- ▶ The six steps of IM
- ▶ Lessons from southern Africa

The value of intervention adaptation



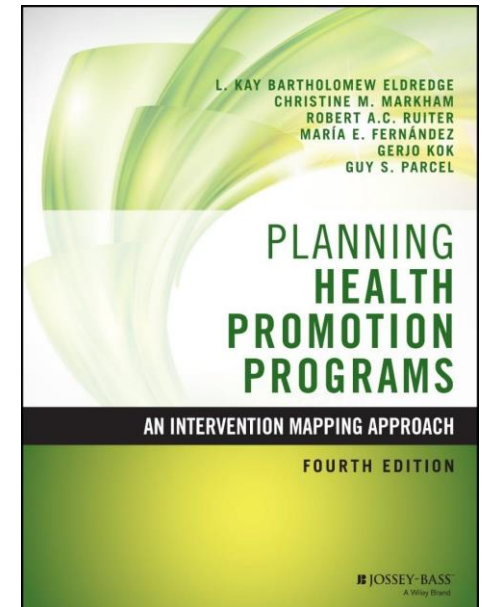
Save resources



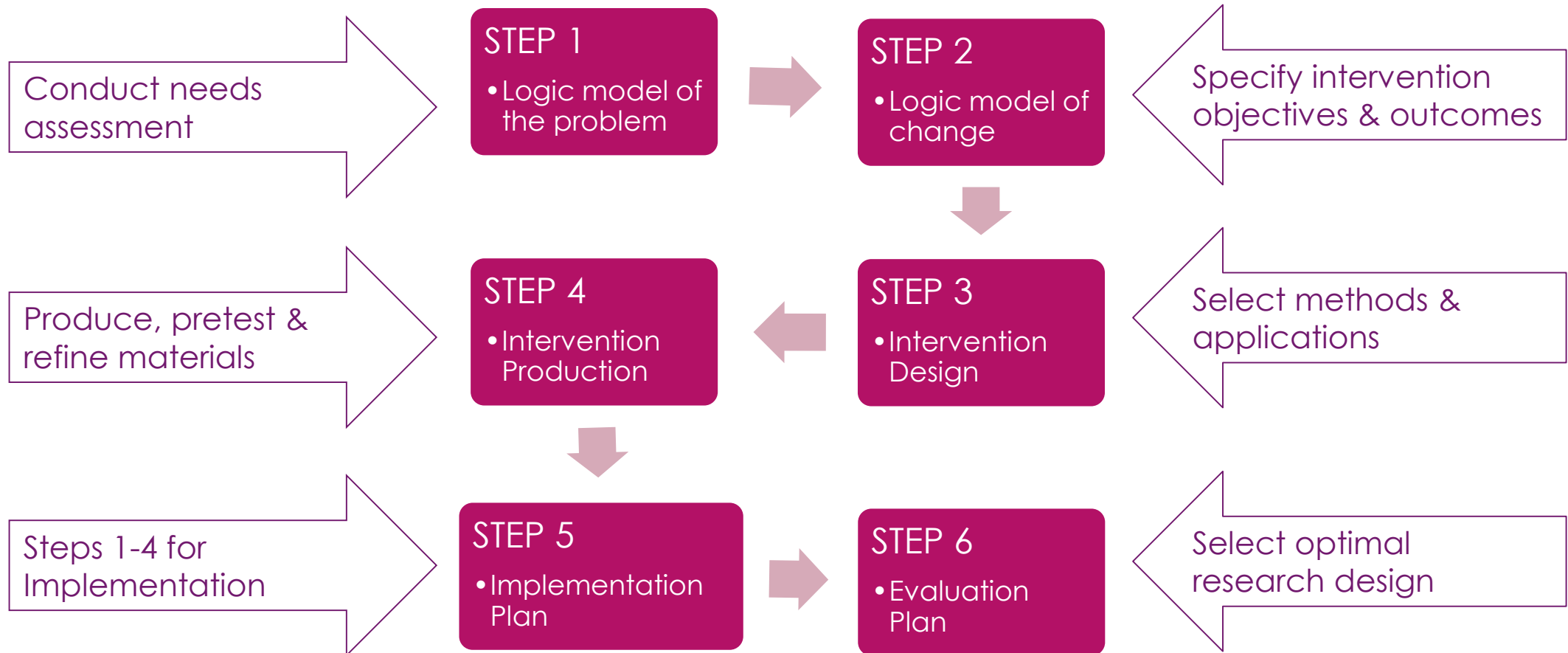
Expedite impact

How can Intervention Mapping help?

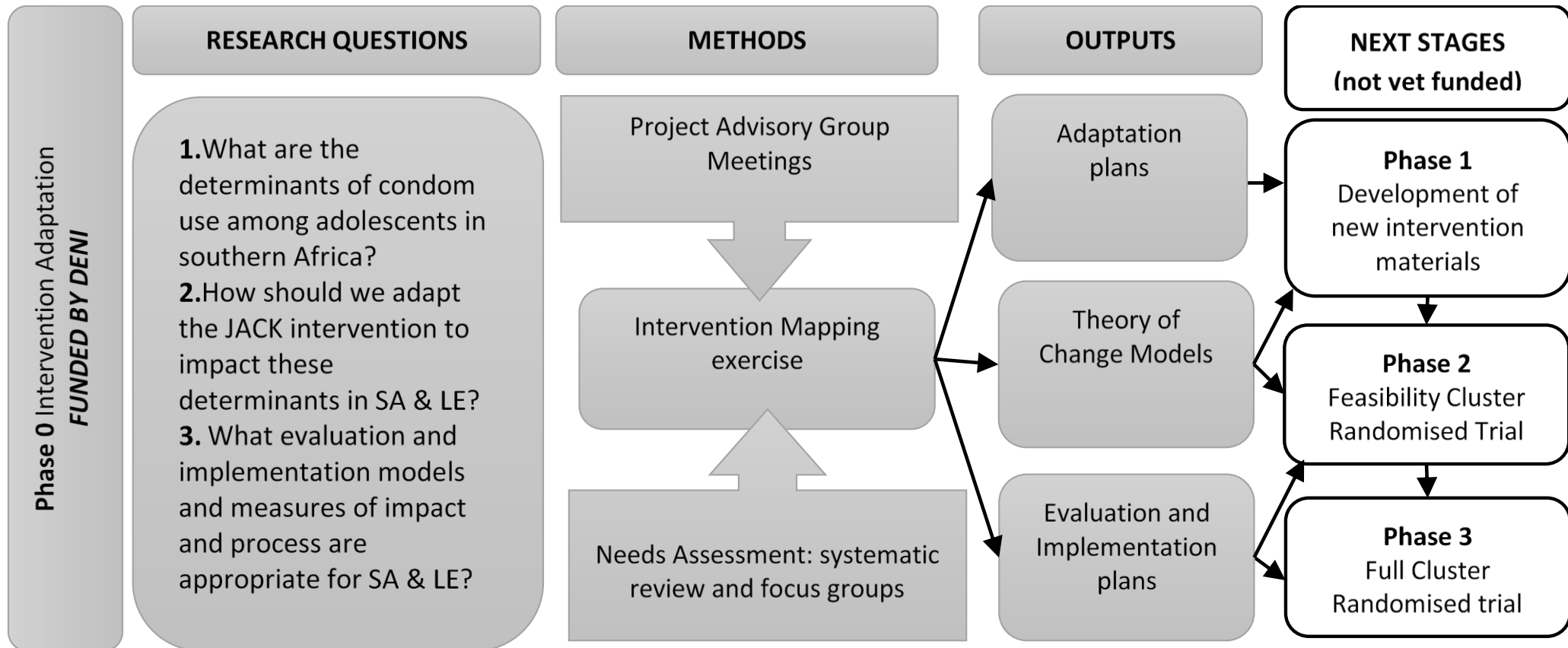
- ▶ A **protocol** for developing (and adapting) theory and evidence-based health promotion interventions
- ▶ **Six steps** with detailed tasks
- ▶ A **systematic** process for asking ‘why’ and ‘how’ questions and **documenting** decisions
- ▶ Must ♥ **matrices and logic models**
- ▶ **Multidisciplinary** team



The 6 Steps



Thabo Project



Lessons from southern Africa

- ▶ Adequate **time for formative work** before more costly evaluation and implementation studies
- ▶ A framework for meaningful **participation** from stakeholders
- ▶ International **multidisciplinary** planning and development team that includes an expert in human behaviour



Thabo Project Team

- ▶ Dr Áine Aventin (Principal Investigator, QUB)
- ▶ Dr Sarah Skeen, (Project Lead SU)
- ▶ Dr Stephan Rabie (Project Manager, SU)
- ▶ Dr Jackie Stewart, SU
- ▶ Prof Mark Tomlinson, SU
- ▶ Prof Maria Lohan, QUB
- ▶ Dr Lynne Lohan, QUB
- ▶ Prof Mike Clarke, QUB
- ▶ Prof Allen Thurston, QUB
- ▶ Mr David Grant, QUB



THE CENTRE FOR
EVIDENCE AND
SOCIAL INNOVATION



UNIVERSITEIT
STELLENBOSCH
UNIVERSITY



FUNDED BY:
Department for the
Economy