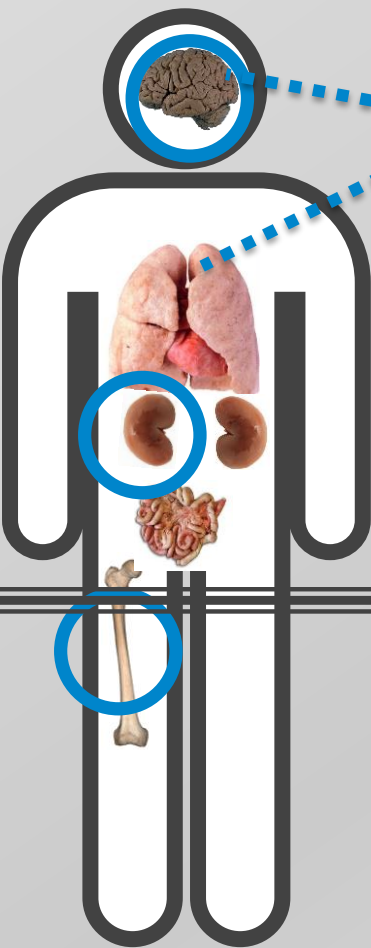


CANCER STAGING

- 1 **CANCER STAGE DESCRIBES THE SIZE OF A CANCER AND HOW FAR IT HAS GROWN AND SPREAD**
- 2 **CANCER STAGING HELPS YOUR DOCTOR TO DECIDE WHAT TREATMENT IS BEST FOR YOU**
- 3 **YOUR CANCER STAGE AT DIAGNOSIS IS STRONGLY LINKED TO YOUR CANCER SURVIVAL**



STAGE 1 - CANCER REMAINS IN ONE PART OF BODY

STAGE 2 - CANCER GROWS INTO SURROUNDING AREA

STAGE 3 - CANCER SPREADS INTO LYMPH NODES

STAGE 4 - CANCER SPREADS TO OTHER PARTS OF BODY

SPINE

KIDNEYS

LIVER

BRAIN

BONES

HOW DOES THIS AFFECT ME?

- 1 **DIFFERENT TYPES OF CANCER GROW AND SPREAD AT DIFFERENT RATES**
- 2 **EARLY CANCER DETECTION USUALLY MEANS LOWER STAGE AT DIAGNOSIS**
- 3 **CANCER SURVIVAL IS STRONGLY LINKED TO STAGE WHEN DIAGNOSED**

ONE-YEAR SURVIVAL FOR THE TOP 4 CANCERS IN NI STAGE 1 VS 4

BREAST	1		100.0%	4		61.0%
PROSTATE	1		100.0%	4		84.9%
COLORECTAL	1		96.1%	4		45.8%
LUNG	1		74.4%	4		14.9%