
Impact of Covid-19 on incidence, survival and mortality of all cancers (ex NMSC) in Northern Ireland

(A comparison between April-December of 2020 and 2018-2019)

Further information

Further information is available at: www.qub.ac.uk/research-centres/nicr

Phone: +44 (0)28 9097 6028

e-mail: nicr@qub.ac.uk

Acknowledgements

The Northern Ireland Cancer Registry (NICR) is funded by the Public Health Agency and is based in Queen's University, Belfast.

NICR uses data provided by patients and collected by the health service as part of their care and support.

The incidence, prevalence and survival statistics in this publication are designated as official statistics signifying that they comply with the Code of Practice for Official Statistics.



INCIDENCE

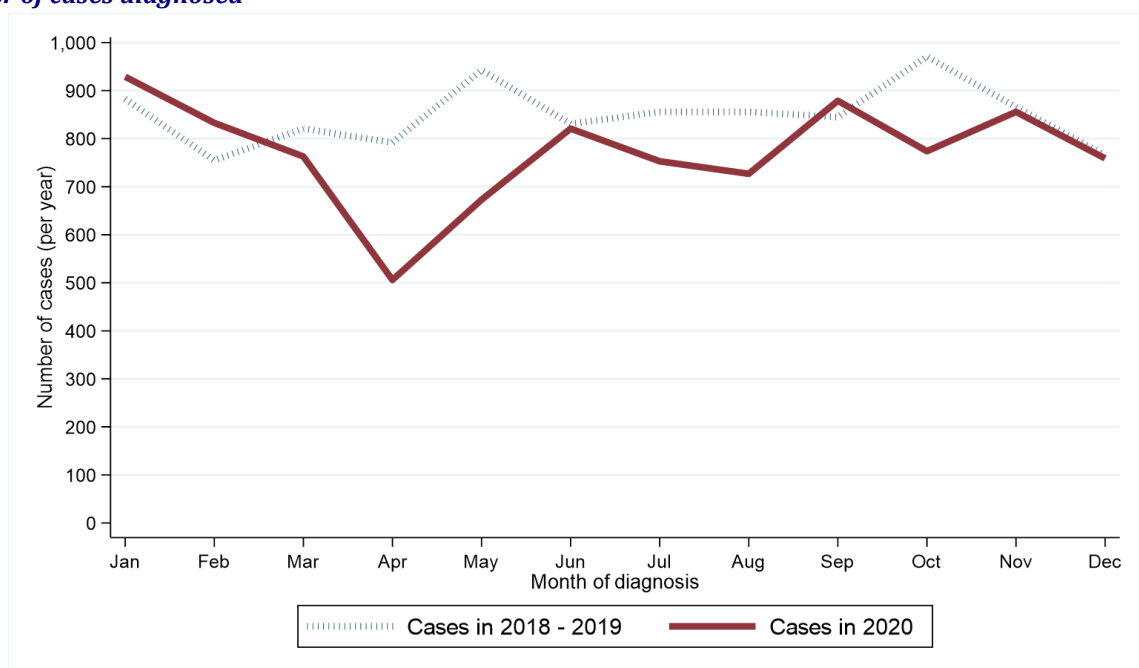
During the April-December period when Covid-19 was present the number of cases of all cancers (ex NMSC) diagnosed decreased by 12.6% (976 patients) from 7,724 per year in 2018 - 2019 to 6,748 in 2020.

Table 1: Number of all cancer (ex NMSC) cases diagnosed in 2018-2020 by month and year of diagnosis

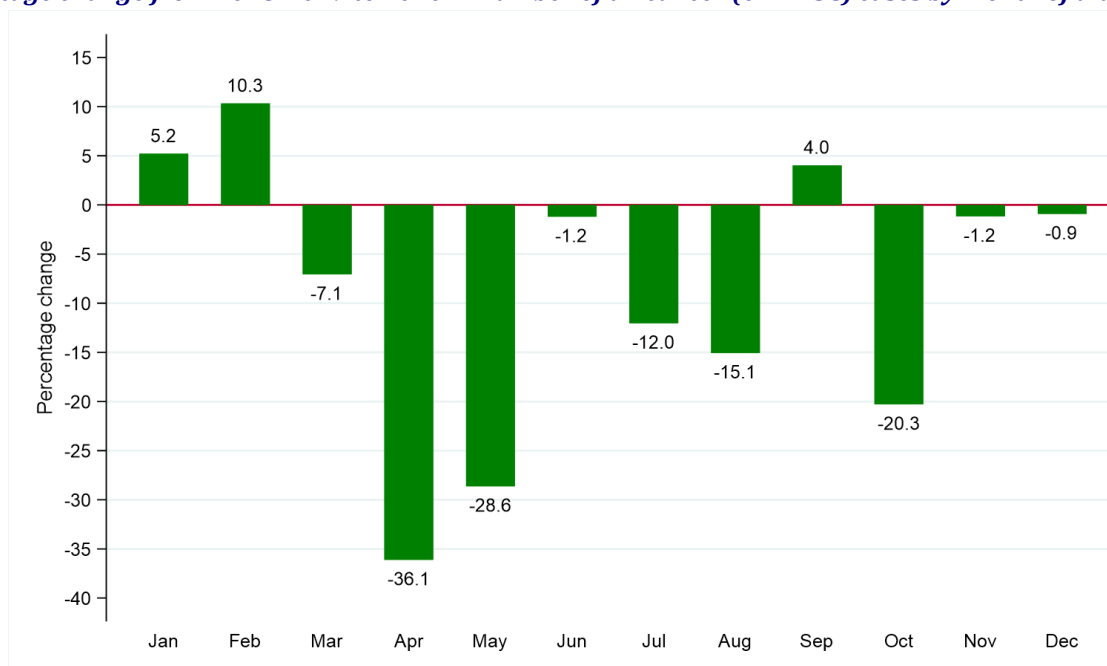
Period of diagnosis	Annual total	Month diagnosed											
		Jan	Feb	Mar	Apr	May	Jun	Jul	Aug	Sept	Oct	Nov	Dec
2018-2019*	10182	883	755	821	792	943	831	856	856	845	971	866	766
2020	9,273	929	833	763	506	673	821	753	727	879	774	856	759

* Average cases per year rounded to the nearest integer. Row sums may thus differ slightly from the total.

Figure 1: Number of all cancer (ex NMSC) cases diagnosed in 2018-2020 by month and year of diagnosis
(a) Number of cases diagnosed



(b) Percentage change from 2018-2019 to 2020 in number of all cancer (ex NMSC) cases by month of diagnosis



GENDER

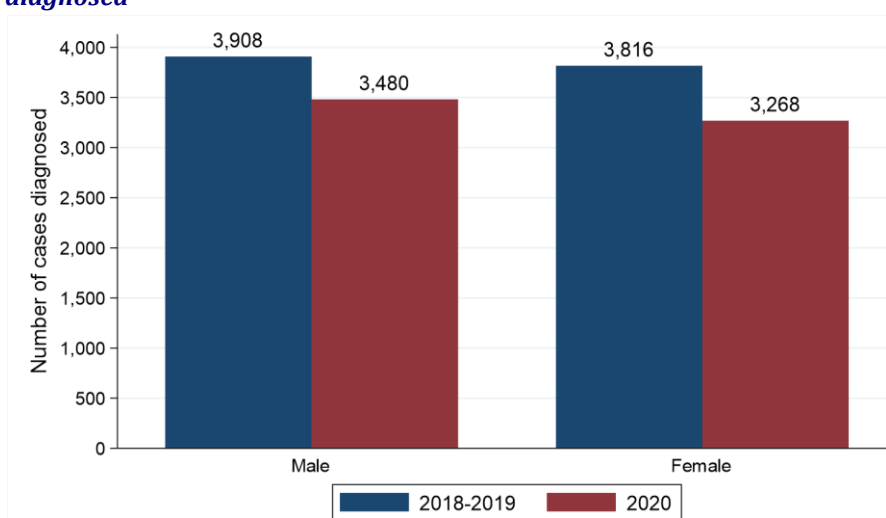
Excluding the first quarter of each year among males the number of cases of all cancers (ex NMSC) diagnosed decreased by 11.0% from 3,908 per year in 2018 - 2019 to 3,480 in 2020. Between the same two time periods the number of cases among females decreased by 14.4% from 3,816 per year to 3,268. The change in case distribution by gender between 2018 - 2019 and 2020 was not statistically significant.

Table 2: Number and proportion of all cancer (ex NMSC) cases diagnosed in April-December of 2018-2020 by gender and period of diagnosis

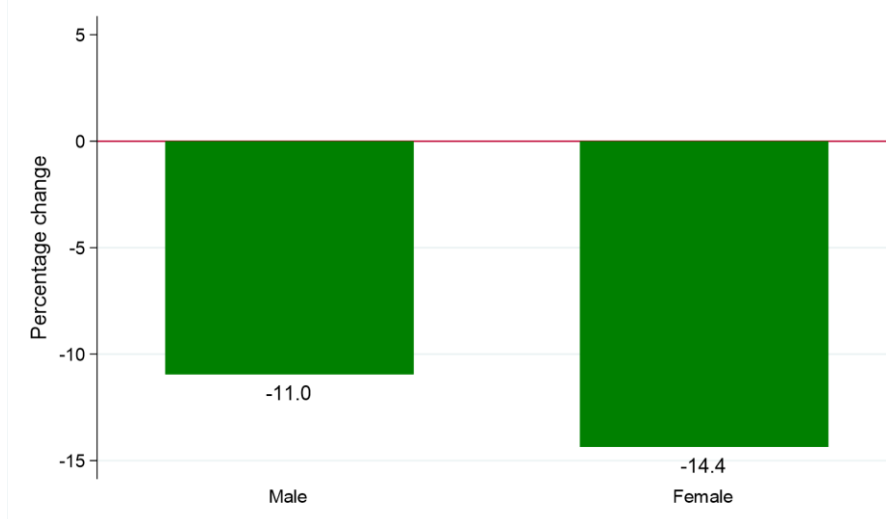
Gender	Period of diagnosis (Apr-Dec)		Percentage change
	2018-2019*	2020	
Male	3,908 (50.6%)	3,480 (51.6%)	-11.0% (428 patients)
Female	3,816 (49.4%)	3,268 (48.4%)	-14.4% (548 patients)
All persons	7,724	6,748	-12.6% (976 patients)

* Average cases per year rounded to the nearest integer. Column sums may thus differ slightly from the total.

Figure 2: All cancer (ex NMSC) cases diagnosed in April-December of 2018-2020 by gender and period of diagnosis
(a) Number of cases diagnosed



(b) Percentage change from 2018-2019 to 2020 in number of all cancer (ex NMSC) cases by gender



AGE

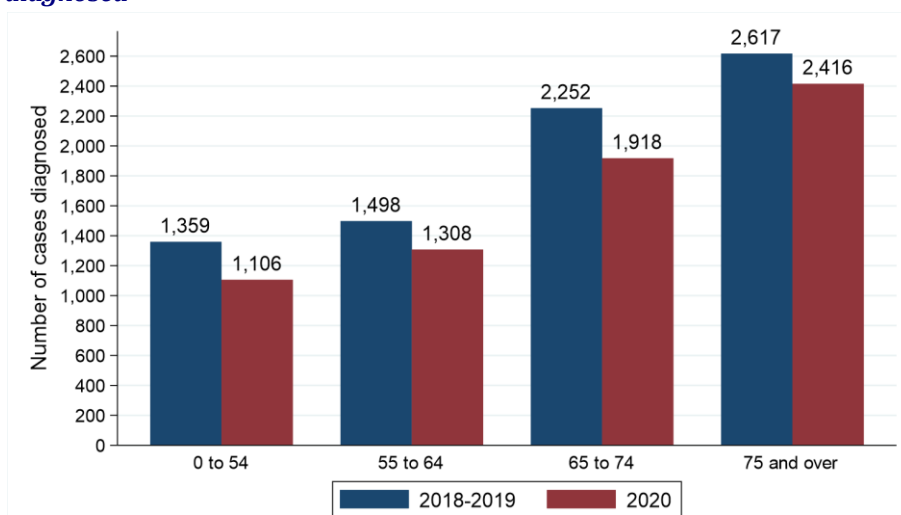
Excluding the first quarter of each year among people aged 0 to 54 the number of cases of all cancers (ex NMSC) diagnosed decreased by 18.6% from 1,359 per year in 2018 - 2019 to 1,106 in 2020. Between the same two time periods, the number of cases among people aged 75 and over decreased by 7.7% from 2,617 per year to 2,416. The change in case distribution by age between 2018 - 2019 and 2020 was statistically significant ($p = 0.020$).

Table 3: Number and proportion of all cancer (ex NMSC) cases diagnosed in April-December of 2018-2020 by age and period of diagnosis

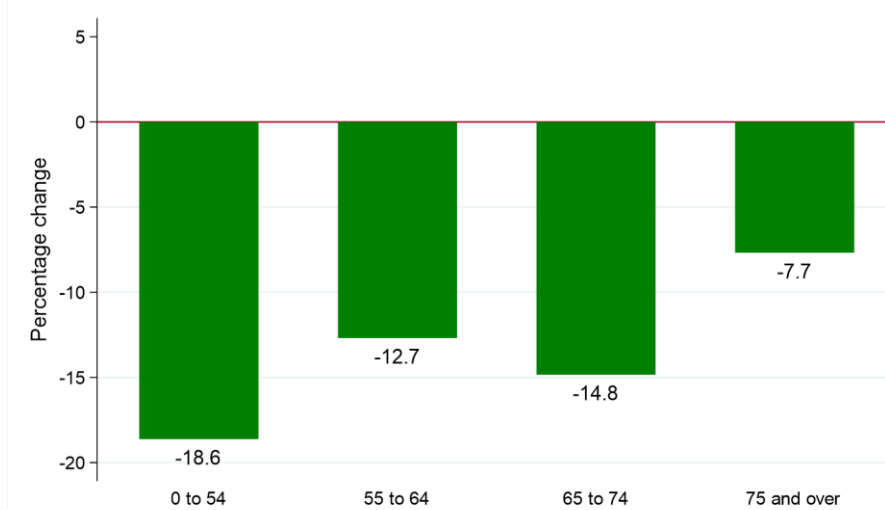
Age group	Period of diagnosis (Apr-Dec)		Percentage change
	2018-2019*	2020	
0 to 54	1,359 (17.6%)	1,106 (16.4%)	-18.6% (253 patients)
55 to 64	1,498 (19.4%)	1,308 (19.4%)	-12.7% (190 patients)
65 to 74	2,252 (29.2%)	1,918 (28.4%)	-14.8% (334 patients)
75 and over	2,617 (33.9%)	2,416 (35.8%)	-7.7% (201 patients)
All ages	7,724	6,748	-12.6% (976 patients)

* Average cases per year rounded to the nearest integer. Column sums may thus differ slightly from the total.

Figure 3: All cancer (ex NMSC) cases diagnosed in April-December of 2018-2020 by age and period of diagnosis
(a) Number of cases diagnosed



(b) Percentage change from 2018-2019 to 2020 in number of all cancer (ex NMSC) cases by age at diagnosis



HEALTH AND SOCIAL CARE TRUST

Excluding the first quarter of each year among residents of Northern HSCT the number of cases of all cancers (ex NMSC) diagnosed decreased by 17.0% from 2,054 per year in 2018 - 2019 to 1,705 in 2020. Between the same two time periods the number of cases among residents of Western HSCT decreased by 9.4% from 1,209 per year to 1,095. The change in case distribution by HSCT between 2018 - 2019 and 2020 was not statistically significant.

Table 4: Number and proportion of all cancer (ex NMSC) cases diagnosed in April-December of 2018-2020 by Health and Social Care Trust and period of diagnosis

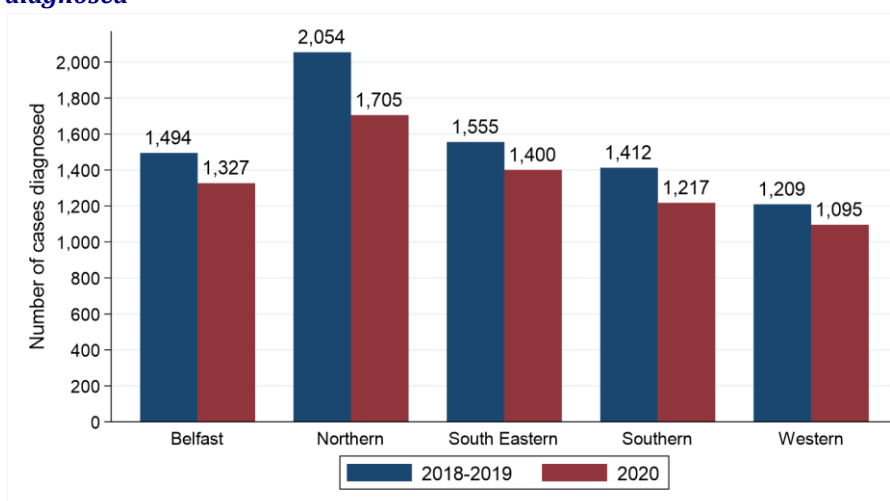
Health and Social Care Trust	Period of diagnosis (Apr-Dec)		Percentage change
	2018-2019*	2020	
Belfast HSCT	1,494 (19.3%)	1,327 (19.7%)	-11.2% (167 patients)
Northern HSCT	2,054 (26.6%)	1,705 (25.3%)	-17.0% (349 patients)
South Eastern HSCT	1,555 (20.1%)	1,400 (20.7%)	-10.0% (155 patients)
Southern HSCT	1,412 (18.3%)	1,217 (18.0%)	-13.8% (195 patients)
Western HSCT	1,209 (15.7%)	1,095 (16.2%)	-9.4% (114 patients)
Northern Ireland	7,724	6,748	-12.6% (976 patients)

* Average cases per year rounded to the nearest integer. Column sums may thus differ slightly from the total.

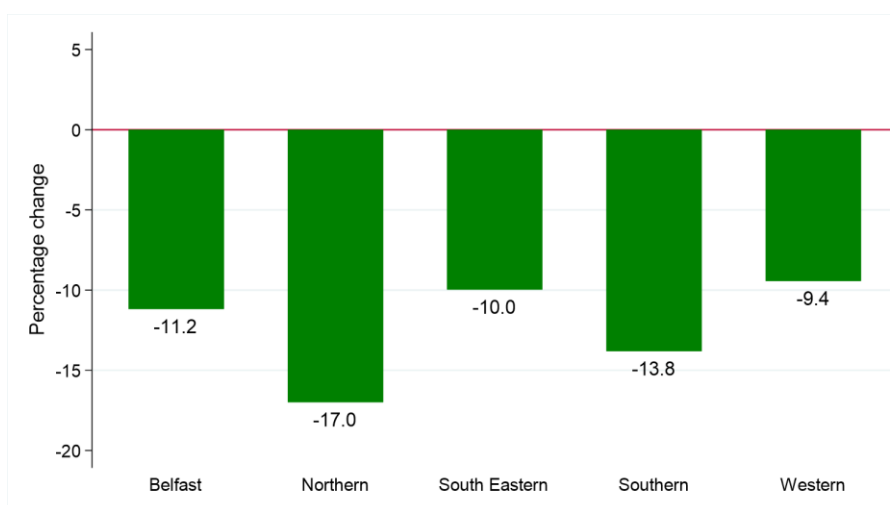
Note: Cases with unknown Health and Social Care Trust are included in totals

Figure 4: All cancer (ex NMSC) cases diagnosed in April-December of 2018-2020 by Health and Social Care Trust and period of diagnosis

(a) Number of cases diagnosed



(b) Percentage change from 2018-2019 to 2020 in number of all cancer (ex NMSC) cases by Health and Social Care Trust



DEPRIVATION

Excluding the first quarter of each year among residents of the most deprived areas the number of cases of all cancers (ex NMSC) diagnosed decreased by 7.4% from 1,411 per year in 2018 - 2019 to 1,307 in 2020. Between the same two time periods the number of cases among residents of the least deprived areas decreased by 21.8% from 1,608 per year to 1,257. The change in case distribution by deprivation quintile between 2018 - 2019 and 2020 was statistically significant ($p = 0.003$).

Table 5: Number and proportion of all cancer (ex NMSC) cases diagnosed in April-December of 2018-2020 by deprivation quintile and period of diagnosis

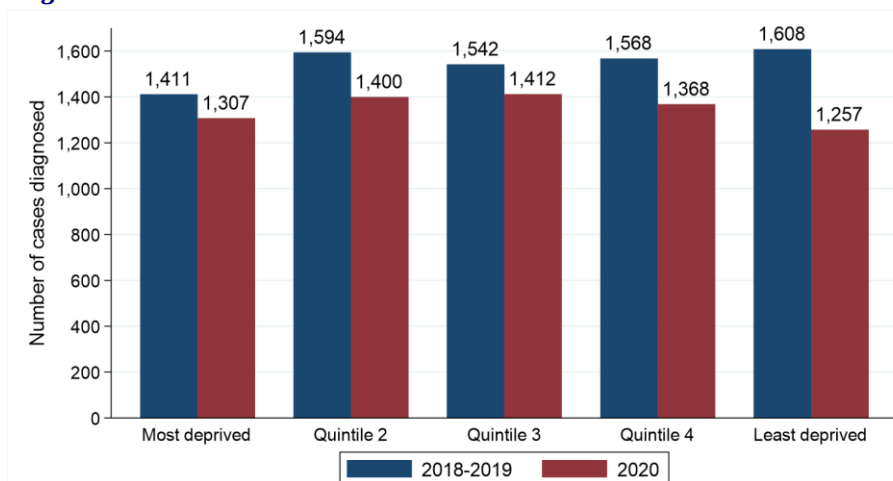
Deprivation quintile	Period of diagnosis (Apr-Dec)		Percentage change
	2018-2019*	2020	
Most deprived	1,411 (18.3%)	1,307 (19.4%)	-7.4% (104 patients)
Quintile 2	1,594 (20.6%)	1,400 (20.7%)	-12.2% (194 patients)
Quintile 3	1,542 (20.0%)	1,412 (20.9%)	-8.4% (130 patients)
Quintile 4	1,568 (20.3%)	1,368 (20.3%)	-12.8% (200 patients)
Least deprived	1,608 (20.8%)	1,257 (18.6%)	-21.8% (351 patients)
Northern Ireland	7,724	6,748	-12.6% (976 patients)

* Average cases per year rounded to the nearest integer. Column sums may thus differ slightly from the total.

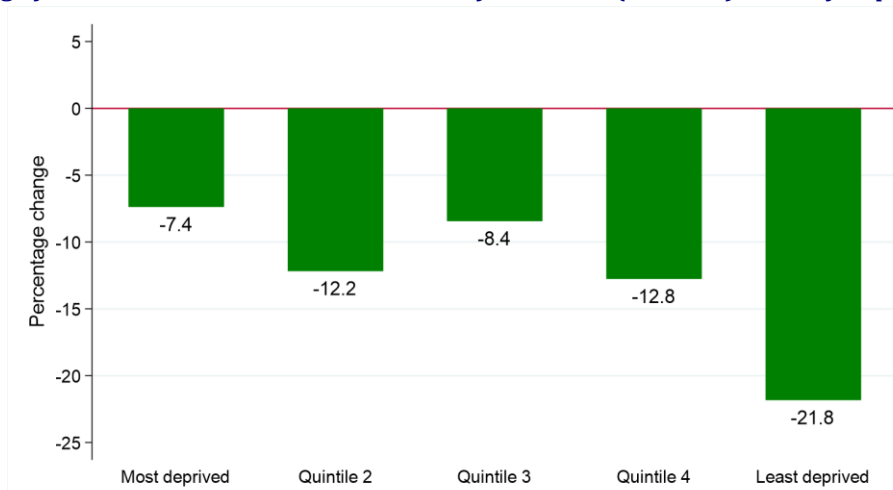
Note: Cases with unknown deprivation quintile are included in totals

Figure 5: All cancer (ex NMSC) cases diagnosed in April-December of 2018-2020 by deprivation quintile and period of diagnosis

(a) Number of cases diagnosed



(b) Percentage change from 2018-2019 to 2020 in number of all cancer (ex NMSC) cases by deprivation quintile



CANCER TYPE

Excluding the first quarter of each year the number of gallbladder cases diagnosed increased by 24.7% from 77 per year in 2018 - 2019 to 96 in 2020. Between the same two time periods the number of cases of melanoma diagnosed decreased by 38.6% from 334 per year to 205.

Between 2018 - 2019 and 2020 (excluding the first quarter of each year) the number of cases of:

- Breast cancer diagnosed decreased by 11.0% from 1,118 cases per year to 995 cases.
- Lung cancer diagnosed decreased by 7.5% from 1,029 cases per year to 952 cases.
- Prostate cancer diagnosed decreased by 14.5% from 1,035 cases per year to 885 cases.
- Colorectal cancer diagnosed decreased by 12.0% from 906 cases per year to 797 cases.
- Lymphoma diagnosed decreased by 12.5% from 320 cases per year to 280 cases.

The change in case distribution by cancer type between 2018 - 2019 and 2020 was statistically significant ($p < 0.001$).

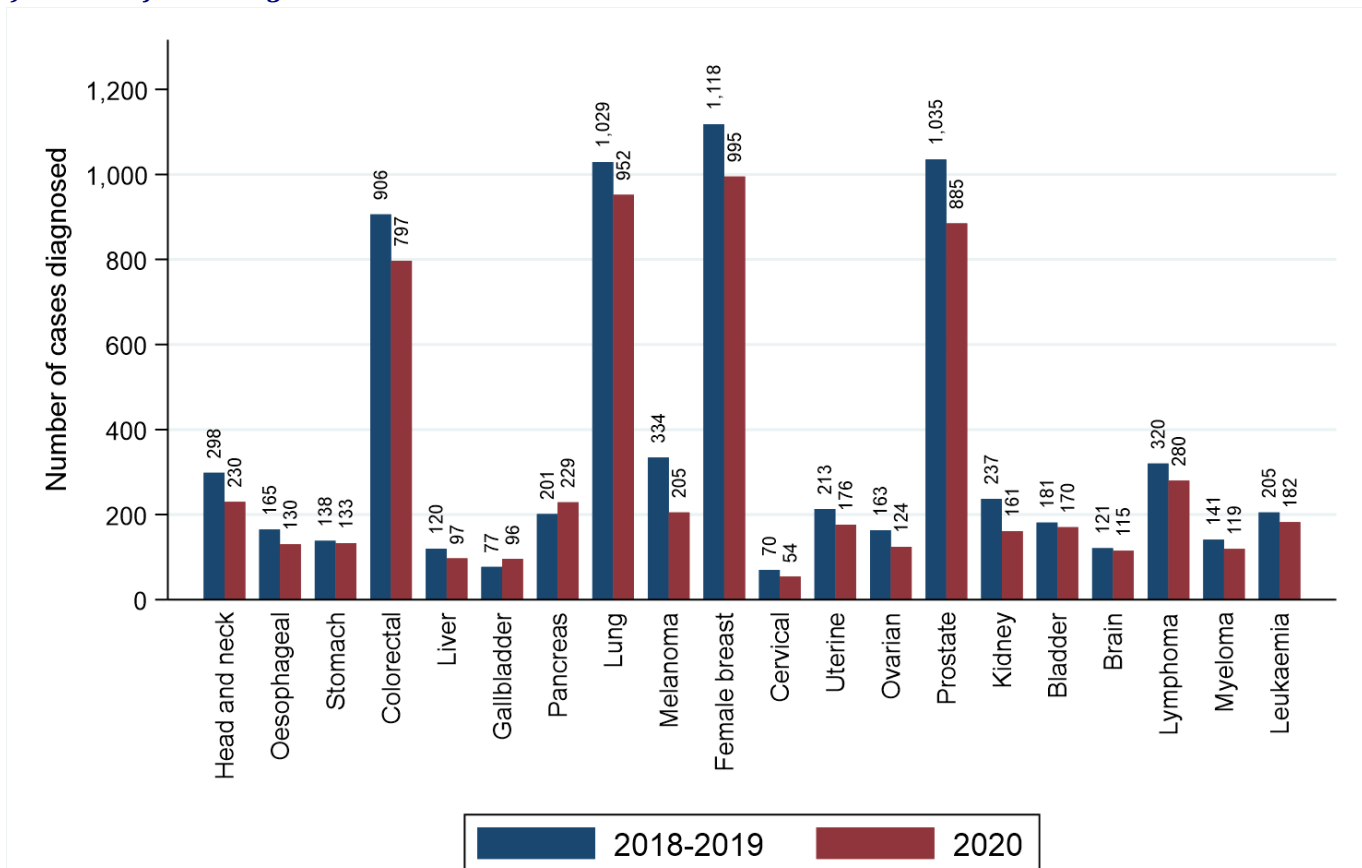
Table 6: Number and proportion of all cancer (ex NMSC) cases diagnosed in April-December of 2018-2020 by cancer type and period of diagnosis

Cancer type	Period of diagnosis (Apr-Dec)		Percentage change
	2018-2019*	2020	
Head and neck	298 (3.9%)	230 (3.4%)	-22.8% (68 patients)
Oesophageal	165 (2.1%)	130 (1.9%)	-21.2% (35 patients)
Stomach	138 (1.8%)	133 (2.0%)	-3.6% (5 patients)
Colorectal	906 (11.7%)	797 (11.8%)	-12.0% (109 patients)
Liver	120 (1.6%)	97 (1.4%)	-19.2% (23 patients)
Gallbladder	77 (1.0%)	96 (1.4%)	+24.7% (19 patients)
Pancreas	201 (2.6%)	229 (3.4%)	+13.9% (28 patients)
Lung	1,029 (13.3%)	952 (14.1%)	-7.5% (77 patients)
Melanoma	334 (4.3%)	205 (3.0%)	-38.6% (129 patients)
Female breast	1,118 (14.5%)	995 (14.7%)	-11.0% (123 patients)
Cervical	70 (0.9%)	54 (0.8%)	-22.9% (16 patients)
Uterine	213 (2.8%)	176 (2.6%)	-17.4% (37 patients)
Ovarian	163 (2.1%)	124 (1.8%)	-23.9% (39 patients)
Prostate	1,035 (13.4%)	885 (13.1%)	-14.5% (150 patients)
Testicular	51 (0.7%)	44 (0.7%)	-13.7% (7 patients)
Kidney	237 (3.1%)	161 (2.4%)	-32.1% (76 patients)
Bladder	181 (2.3%)	170 (2.5%)	-6.1% (11 patients)
Brain	121 (1.6%)	115 (1.7%)	-5.0% (6 patients)
Thyroid	113 (1.5%)	106 (1.6%)	-6.2% (7 patients)
Lymphoma	320 (4.1%)	280 (4.1%)	-12.5% (40 patients)
Myeloma	141 (1.8%)	119 (1.8%)	-15.6% (22 patients)
Leukaemia	205 (2.7%)	182 (2.7%)	-11.2% (23 patients)

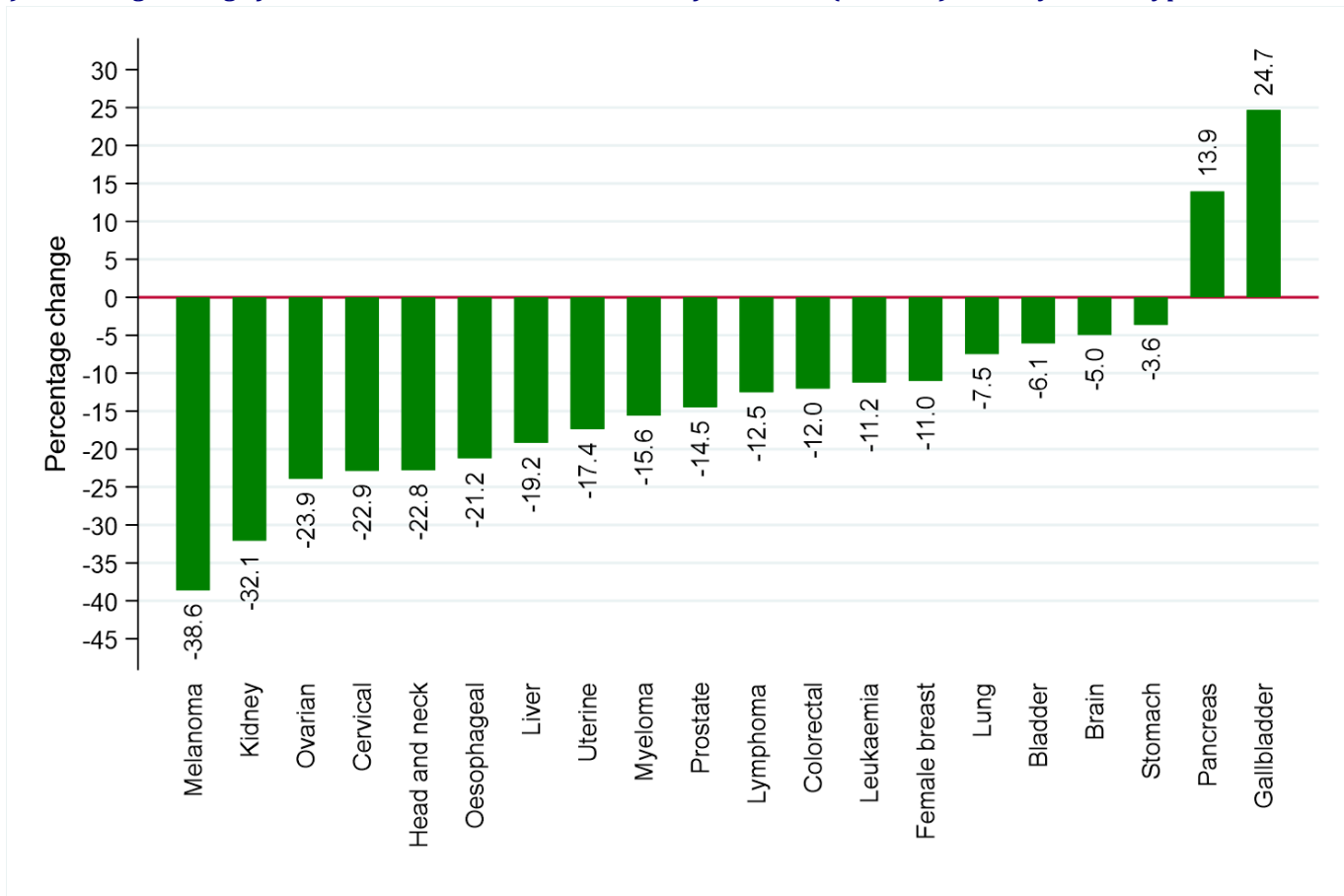
* Average cases per year rounded to the nearest integer. Column sums may thus differ slightly from the total.

Figure 6: All cancer (ex NMSC) cases diagnosed in April-December of 2018-2020 by cancer type and period of diagnosis

(a) Number of cases diagnosed



(b) Percentage change from 2018-2019 to 2020 in number of all cancer (ex NMSC) cases by cancer type



BASIS OF DIAGNOSIS

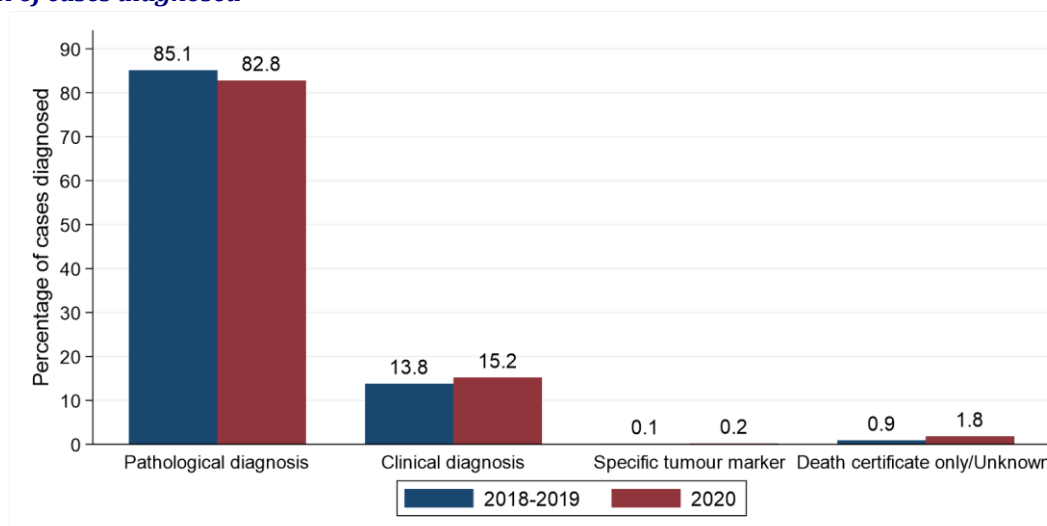
Excluding the first quarter of each year the number of all cancer (ex NMSC) cases diagnosed pathologically decreased by 15.0% from 6,574 per year in 2018 - 2019 to 5,585 in 2020, while the number of cases diagnosed clinically decreased by 3.9% from 1,068 per year to 1,026. The change in case distribution by basis of diagnosis between 2018 - 2019 and 2020 was statistically significant ($p < 0.001$).

Table 7: Number and proportion of all cancer (ex NMSC) cases diagnosed in April-December of 2018-2020 by basis and period of diagnosis

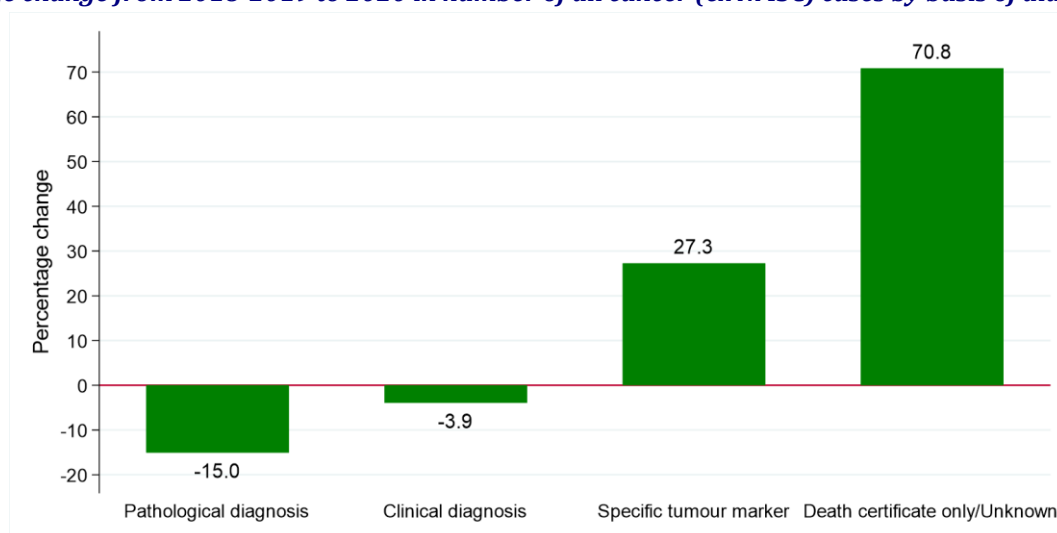
Basis of diagnosis	Period of diagnosis (Apr-Dec)		Percentage change
	2018-2019*	2020	
Pathological diagnosis	6,574 (85.1%)	5,585 (82.8%)	-15.0% (989 patients)
Clinical diagnosis	1,068 (13.8%)	1,026 (15.2%)	-3.9% (42 patients)
Specific tumour marker	11 (0.1%)	14 (0.2%)	+27.3% (3 patients)
Death certificate only/Unknown	72 (0.9%)	123 (1.8%)	+70.8% (51 patients)
All groups	7,724	6,748	-12.6% (976 patients)

* Average cases per year rounded to the nearest integer. Column sums may thus differ slightly from the total.

Figure 7: All cancer (ex NMSC) cases diagnosed in April-December of 2018-2020 by basis and period of diagnosis
(a) Proportion of cases diagnosed



(b) Percentage change from 2018-2019 to 2020 in number of all cancer (ex NMSC) cases by basis of diagnosis



STAGE

Excluding the first quarter of each year the number of all cancer (ex NMSC) cases diagnosed at Stage I decreased by 25.0% from 2,260 per year in 2018 - 2019 to 1,696 in 2020. Between the same two time periods the number of cases diagnosed at Stage IV decreased by 0.9% from 1,580 per year to 1,566. The change in case distribution by stage at diagnosis between 2018 - 2019 and 2020 was statistically significant ($p < 0.001$).

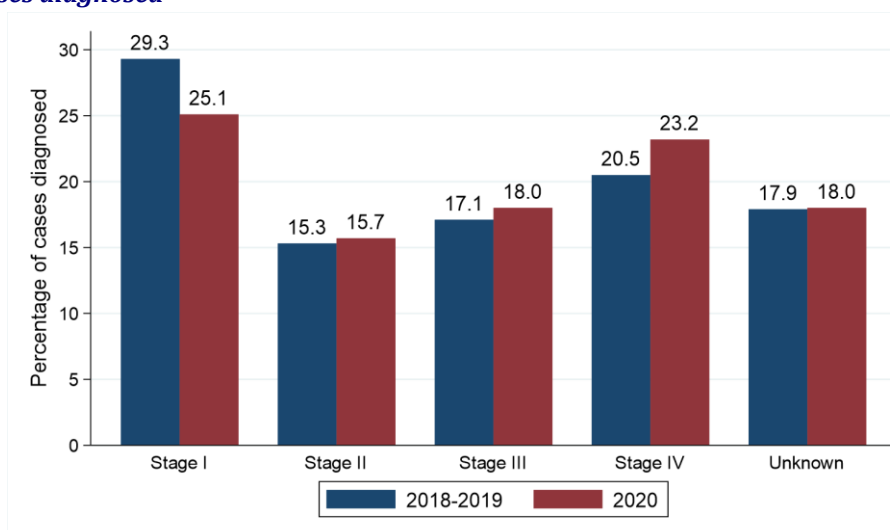
Table 8: Number and proportion of all cancer (ex NMSC) cases diagnosed in April-December of 2018-2020 by stage at diagnosis and period of diagnosis

Stage at diagnosis	Period of diagnosis (Apr-Dec)		Percentage change
	2018-2019*	2020	
Stage I	2,260 (29.3%)	1,696 (25.1%)	-25.0% (564 patients)
Stage II	1,182 (15.3%)	1,060 (15.7%)	-10.3% (122 patients)
Stage III	1,320 (17.1%)	1,213 (18.0%)	-8.1% (107 patients)
Stage IV	1,580 (20.5%)	1,566 (23.2%)	-0.9% (14 patients)
Unknown	1,383 (17.9%)	1,213 (18.0%)	-12.3% (170 patients)
All stages	7,724	6,748	-12.6% (976 patients)

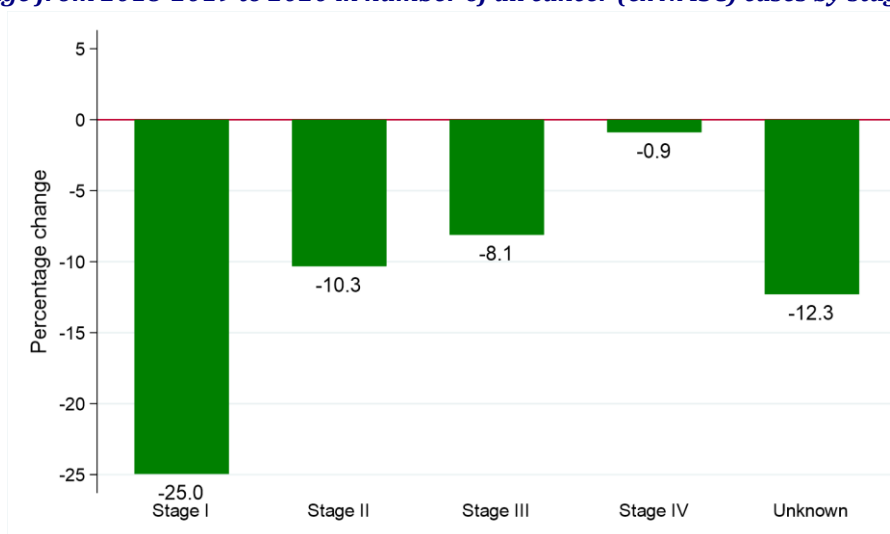
* Average cases per year rounded to the nearest integer. Column sums may thus differ slightly from the total.

Figure 8: All cancer (ex NMSC) cases diagnosed in April-December of 2018-2020 by stage and period of diagnosis

(a) Proportion of cases diagnosed



(b) Percentage change from 2018-2019 to 2020 in number of all cancer (ex NMSC) cases by stage at diagnosis



METHOD OF HOSPITAL ADMISSION

Excluding the first quarter of each year the number of cases of all cancers (ex NMSC) where the patient had an emergency admission recorded as the most recent hospital admission type up to 30 days prior to diagnosis increased by 8.5% from 1,212 per year in 2018 - 2019 to 1,315 in 2020. The change in case distribution by hospital admission type between 2018 - 2019 and 2020 was statistically significant ($p < 0.001$).

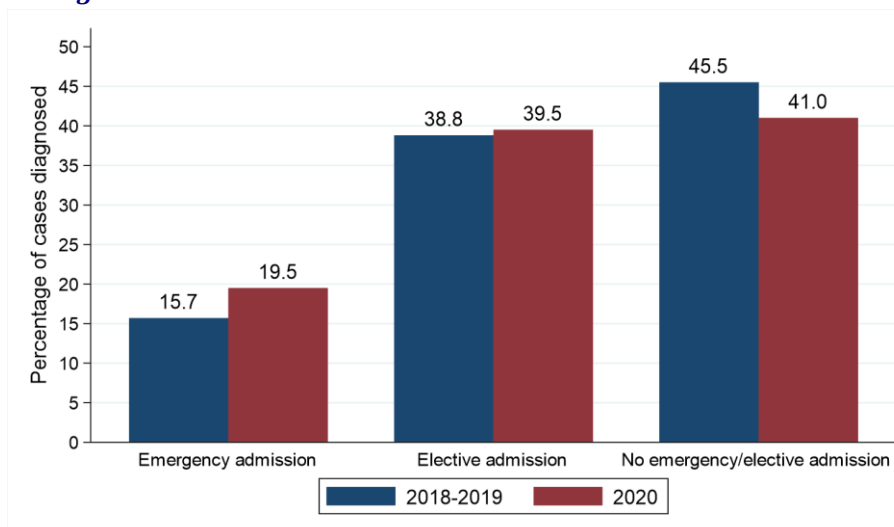
Table 9: Number and proportion of all cancer (ex NMSC) cases diagnosed in April-December of 2018-2020 by method of admission to hospital and period of diagnosis

Method of admission to hospital	Period of diagnosis (Apr-Dec)		Percentage change
	2018-2019*	2020	
Emergency admission	1,212 (15.7%)	1,315 (19.5%)	+8.5% (103 patients)
Elective admission	2,996 (38.8%)	2,663 (39.5%)	-11.1% (333 patients)
No emergency/elective admission recorded	3,517 (45.5%)	2,770 (41.0%)	-21.2% (747 patients)
All persons	7,724	6,748	-12.6% (976 patients)

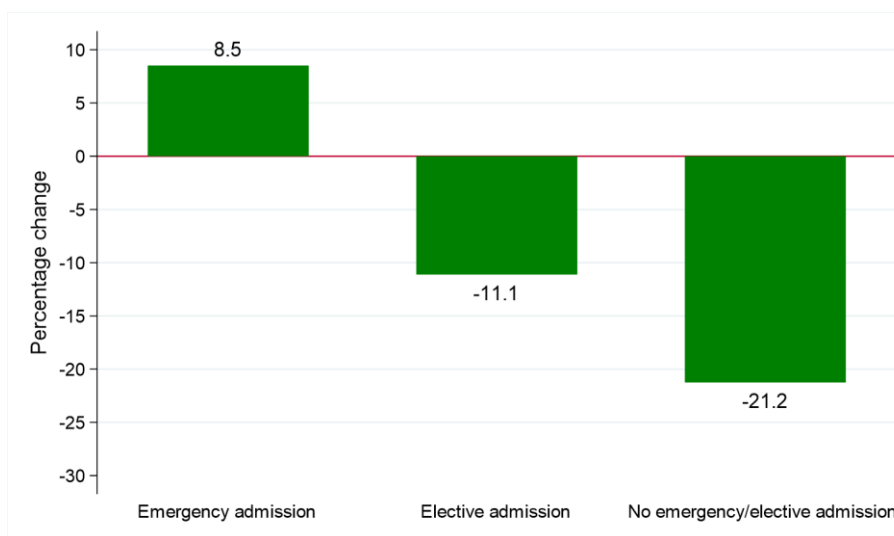
* Average cases per year rounded to the nearest integer. Column sums may thus differ slightly from the total.

Figure 9: All cancer (ex NMSC) cases diagnosed in April-December of 2018-2020 by method of admission to hospital and period of diagnosis

(a) Proportion of cases diagnosed



(b) Percentage change from 2018-2019 to 2020 in number of all cancer (ex NMSC) cases by method of admission to hospital



TREATMENT

Excluding the first quarter of each year the number of all cancer (ex NMSC) cases where the patient was treated with surgery (within six months of diagnosis) decreased by 19.2% from 3,190 per year for those diagnosed in 2018 - 2019 to 2,579 for those diagnosed in 2020. The resulting change in the proportion receiving surgery from 41.3% in 2018 - 2019 to 38.2% in 2020 was statistically significant ($p < 0.001$).

Between the same two time periods the number of cases where the patient was treated with chemotherapy (within six months) decreased by 9.1% from 1,986 per year to 1,806. The resulting change in the proportion receiving chemotherapy from 25.7% in 2018 - 2019 to 26.8% in 2020 was not statistically significant.

The number of all cancer (ex NMSC) cases where the patient was treated with radiotherapy (within six months of diagnosis) decreased by 18.9% from 1,858 per year for those diagnosed in April-December of 2018 - 2019 to 1,506 for those diagnosed in April-December of 2020. The resulting change in the proportion receiving radiotherapy from 24.1% in 2018 - 2019 to 22.3% in 2020 was statistically significant ($p = 0.005$).

Between the same two time periods the number of cases where the patient was treated with hormone therapy (within six months) decreased by 16.6% from 1,457 per year to 1,215. The resulting change in the proportion receiving hormone therapy from 18.9% in 2018 - 2019 to 18.0% in 2020 was not statistically significant.

The proportion of patients receiving none of surgery, chemotherapy, radiotherapy or hormone therapy (within six months of diagnosis) who were diagnosed in April-December 2020 was 33.4%. This compared to 29.1% of those diagnosed in 2018 - 2019. This change was statistically significant ($p < 0.001$).

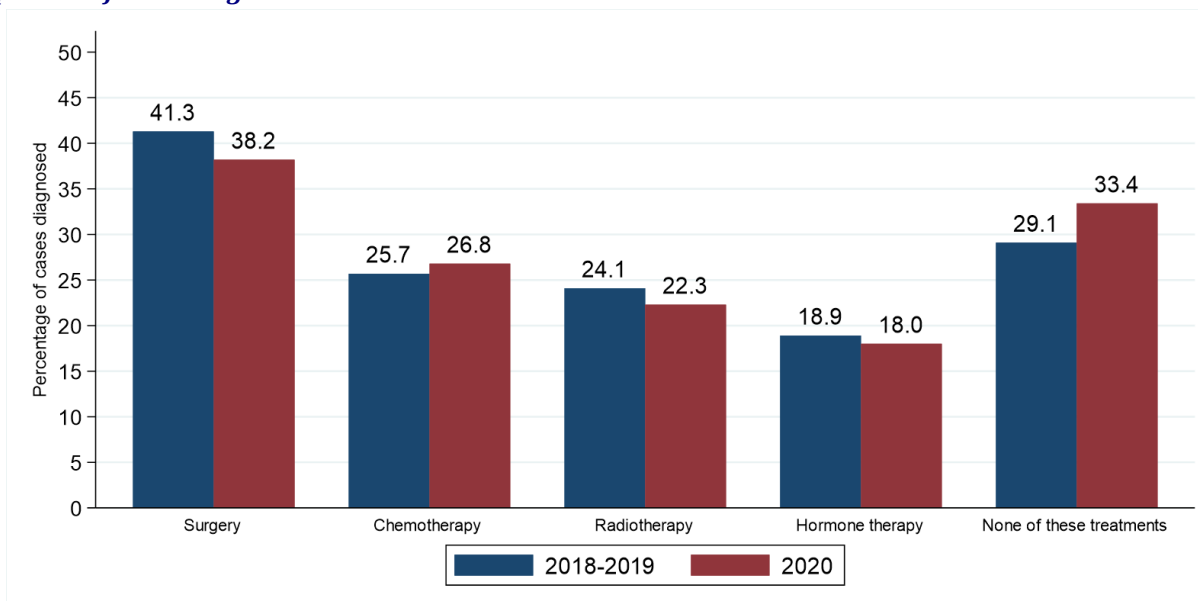
Table 10: Number and proportion of all cancer (ex NMSC) cases diagnosed in April-December of 2018-2020 by treatment type and period of diagnosis

Treatment type	Period of diagnosis (Apr-Dec)		Percentage change
	2018-2019 average	2020	
Surgery	3,190 (41.3%)	2,579 (38.2%)*	-19.2% (611 patients)
Chemotherapy	1,986 (25.7%)	1,806 (26.8%)	-9.1% (180 patients)
Radiotherapy	1,858 (24.1%)	1,506 (22.3%)*	-18.9% (352 patients)
Hormone therapy	1,457 (18.9%)	1,215 (18.0%)	-16.6% (242 patients)
None of these treatments	2,251 (29.1%)	2,253 (33.4%)*	+0.1% (2 patients)

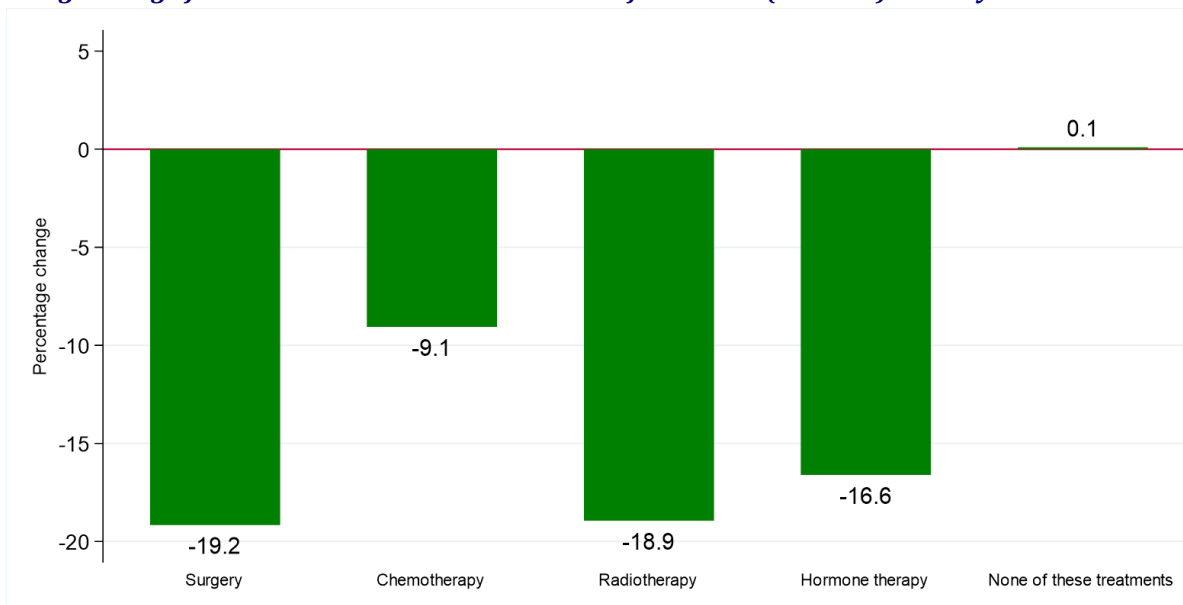
* Statistically significant change

Figure 10: All cancer (ex NMSC) cases diagnosed in April-December of 2018-2020 by treatment received and period of diagnosis

(a) Proportion of cases diagnosed



(b) Percentage change from 2018-2019 to 2020 in number of all cancer (ex NMSC) cases by treatment received



SURVIVAL

Changes in survival are evaluated using two measures. Observed survival examines the time between diagnosis and death from any cause. It thus represents what cancer patients experience, however, due to the inclusion of non-cancer deaths (e.g. heart disease), it may not reflect how changes in cancer care impact survival from cancer. Thus changes in age-standardised net survival are also examined. This measure provides an estimate of patient survival which has been adjusted to take account of deaths unrelated to cancer. It also assumes a standard age distribution thereby removing the impact of changes in the age distribution of cancer patients on changes in survival over time. While this measure is hypothetical, as it assumes patients can only die from cancer related factors, it is a better indicator of the impact of changes in cancer care on patient survival.

OBSERVED SURVIVAL

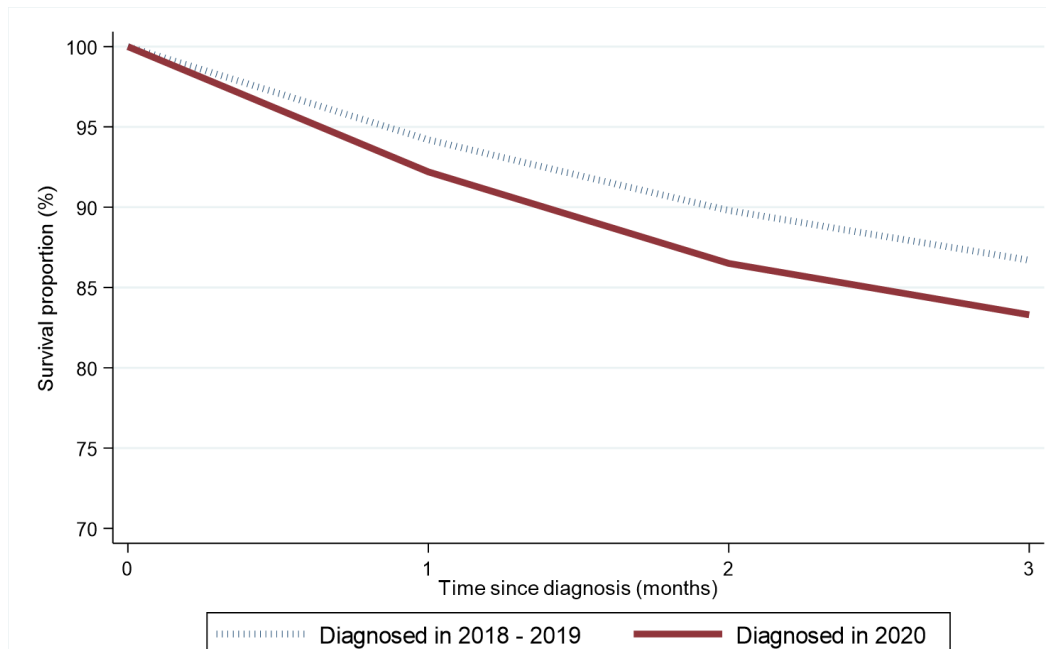
Survival among cancer (ex NMSC) patients one month after diagnosis decreased from 94.2% among those diagnosed in April-December of 2018 - 2019 to 92.2% among those diagnosed in April-December of 2020. This change was statistically significant. Between the same two diagnosis periods, three-month survival decreased from 86.7% to 83.3%. This change was statistically significant.

Table 11: Observed survival for patients with cancer (ex NMSC) diagnosed in April-December of 2018-2020 by period of diagnosis

Survival time	Period of diagnosis (Apr-Dec)	
	2018-2019	2020
1 month	94.2% (93.8% - 94.6%)	92.2% (91.5% - 92.9%)*
2 months	89.8% (89.2% - 90.3%)	86.5% (85.6% - 87.3%)*
3 months	86.7% (86.1% - 87.3%)	83.3% (82.3% - 84.2%)*

* Statistically significant reduction

Figure 11: Observed survival for patients with cancer (ex NMSC) diagnosed in April-December of 2018-2020 by period of diagnosis



DEATHS FROM COVID-19

During 2020 there were a total of 403 deaths from Covid-19 among all cancer (ex NMSC) patients diagnosed at any point since 1993. Among the patients who died of Covid-19, 70 were diagnosed with all cancer (ex NMSC) in 2020, while 45 were diagnosed in 2019.

NET SURVIVAL

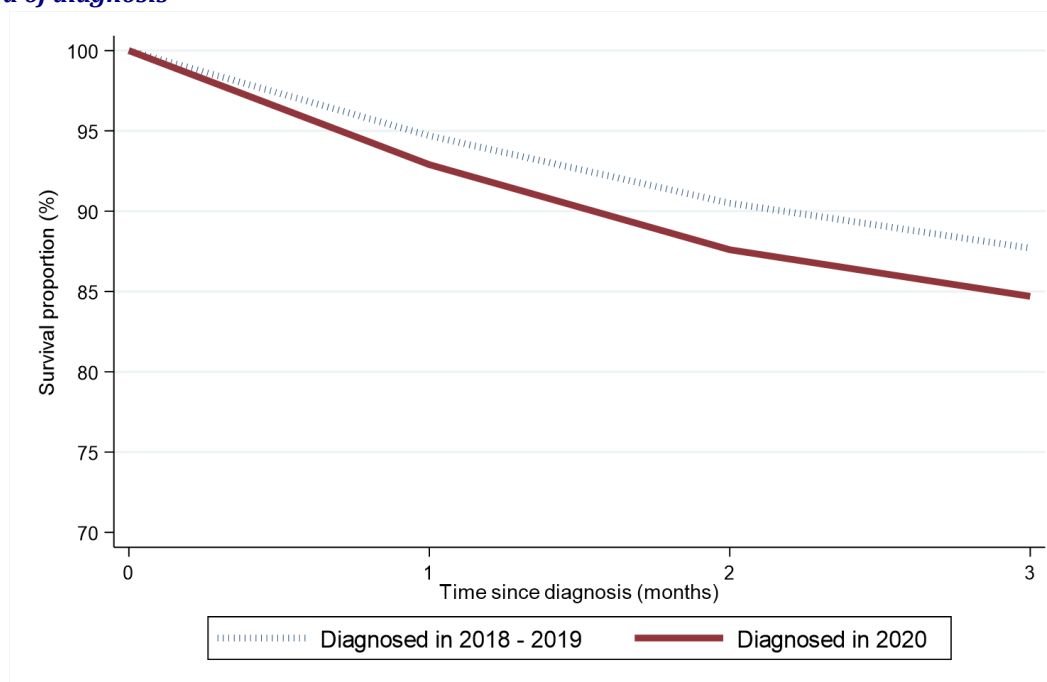
Age-standardised net survival (which takes account of deaths from other causes such as Covid-19) among cancer (ex NMSC) patients one month after diagnosis decreased from 94.7% among those diagnosed in April-December of 2018 - 2019 to 92.9% among those diagnosed in April-December of 2020. This change was statistically significant. Between the same two time periods, three-month age-standardised net survival decreased from 87.7% to 84.7%. This change was statistically significant.

Table 12: Age-standardised net survival for patients with cancer (ex NMSC) diagnosed in April-December of 2018-2020 by period of diagnosis

Survival time	Period of diagnosis (Apr-Dec)	
	2018-2019	2020
1 month	94.7% (94.3% - 95.1%)	92.9% (92.2% - 93.6%)*
2 months	90.5% (90.0% - 91.0%)	87.6% (86.7% - 88.5%)*
3 months	87.7% (87.2% - 88.2%)	84.7% (83.7% - 85.7%)*

* Statistically significant reduction

Figure 12: Age-standardised net survival for patients with cancer (ex NMSC) diagnosed in April-December of 2018-2020 by period of diagnosis



CANCER MORTALITY

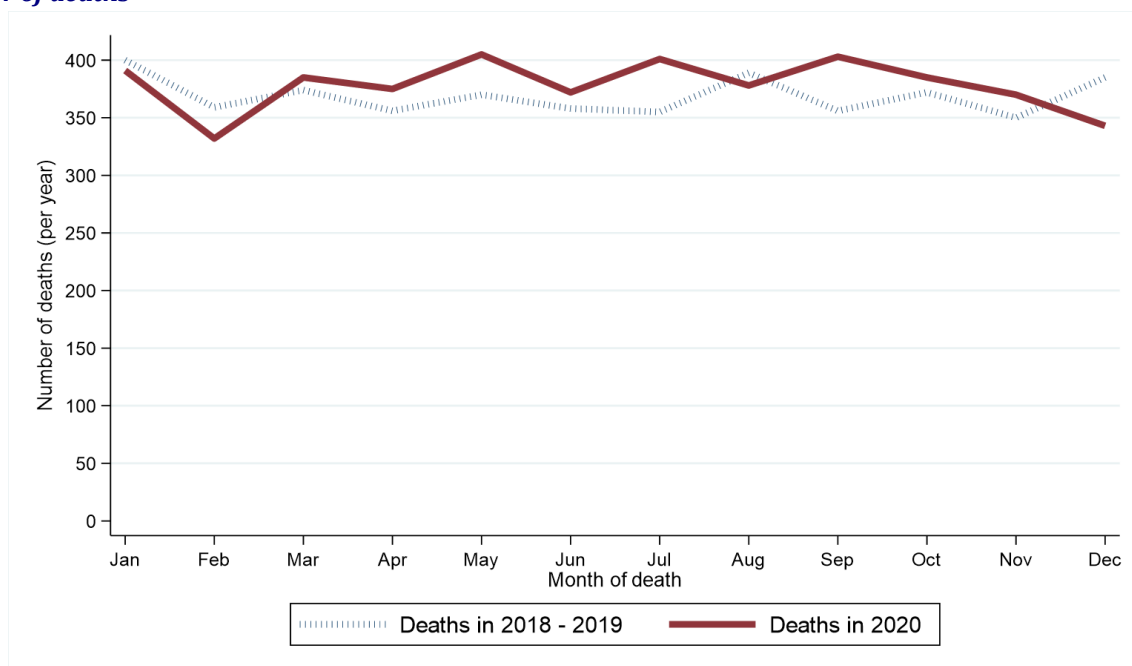
During the April-December period when Covid-19 was present the number of deaths from all cancers (ex NMSC) increased by 4.3% from 3,290 per year in 2018 - 2019 to 3,432 in 2020.

Table 13: Number of all cancer (ex NMSC) deaths in 2018-2020 by month and year of death

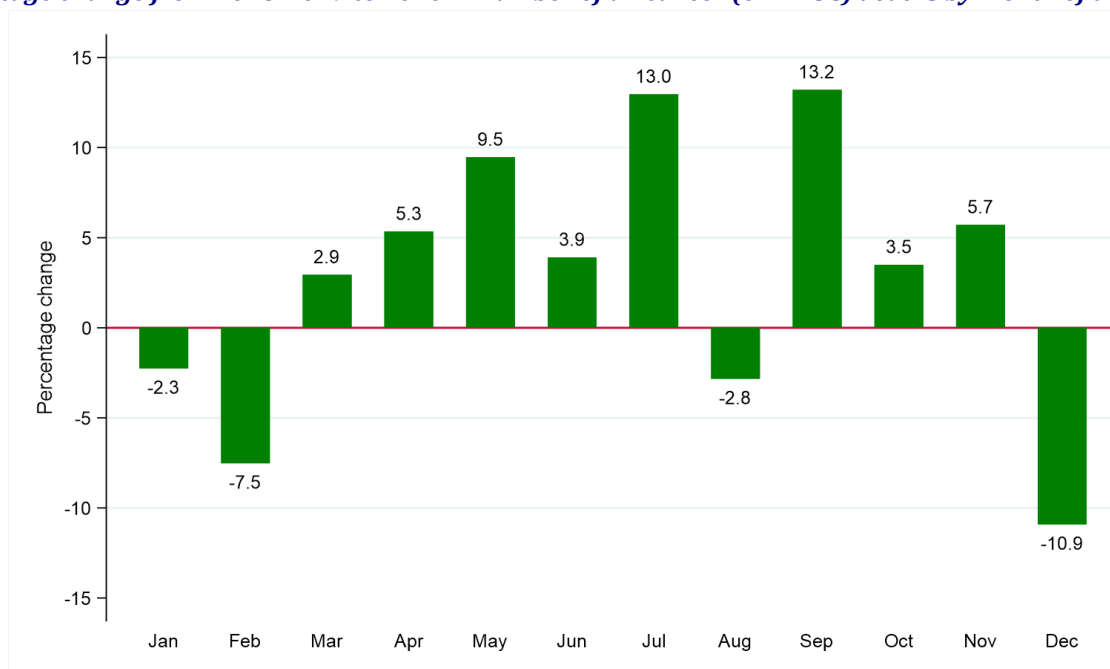
Period of death	Annual total	Month death occurred											
		Jan	Feb	Mar	Apr	May	Jun	Jul	Aug	Sept	Oct	Nov	Dec
2018-2019*	4,422	400	359	374	356	370	358	355	389	356	372	350	385
2020	4,540	391	332	385	375	405	372	401	378	403	385	370	343

* Average deaths per year rounded to the nearest integer. Row sums may thus differ slightly from the total.

Figure 13: Number of all cancer (ex NMSC) deaths in 2018-2020 by month and year of death
(a) Number of deaths



(b) Percentage change from 2018-2019 to 2020 in number of all cancer (ex NMSC) deaths by month of death



GENDER

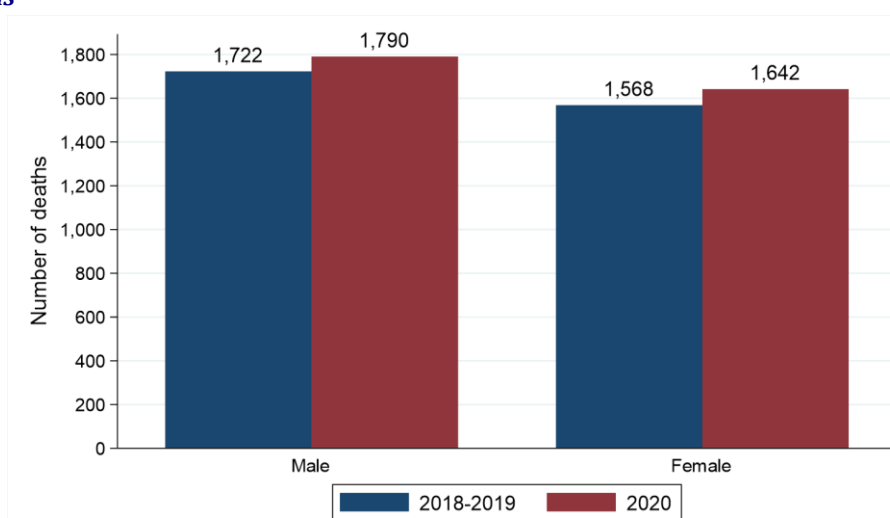
Excluding the first quarter of each year among males the number of deaths from all cancers (ex NMSC) increased by 3.9% from 1,722 per year in 2018 - 2019 to 1,790 in 2020. Between the same two time periods the number of deaths among females increased by 4.7% from 1,568 per year to 1,642. The change in distribution of deaths by gender between 2018 - 2019 and 2020 was not statistically significant.

Table 14: Number and proportion of all cancer (ex NMSC) deaths in April-December of 2018-2020 by gender and period of death

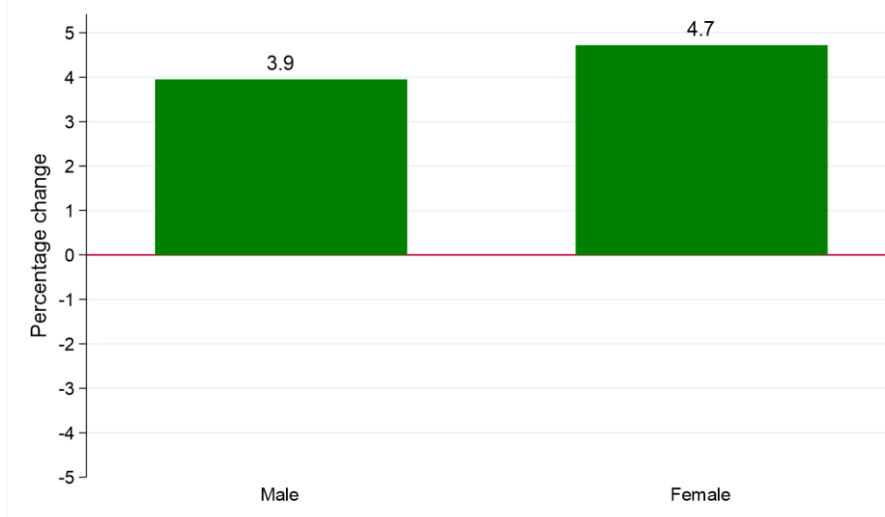
Gender	Period of death (Apr-Dec)		Percentage change
	2018-2019*	2020	
Male	1,722 (52.3%)	1,790 (52.2%)	+3.9%
Female	1,568 (47.7%)	1,642 (47.8%)	+4.7%
All persons	3,290	3,432	+4.3%

* Average deaths per year rounded to the nearest integer. Column sums may thus differ slightly from the total.

Figure 14: All cancer (ex NMSC) deaths in April-December of 2018-2020 by gender and period of death
(a) Number of deaths



(b) Percentage change from 2018-2019 to 2020 in number of all cancer (ex NMSC) deaths by gender



AGE

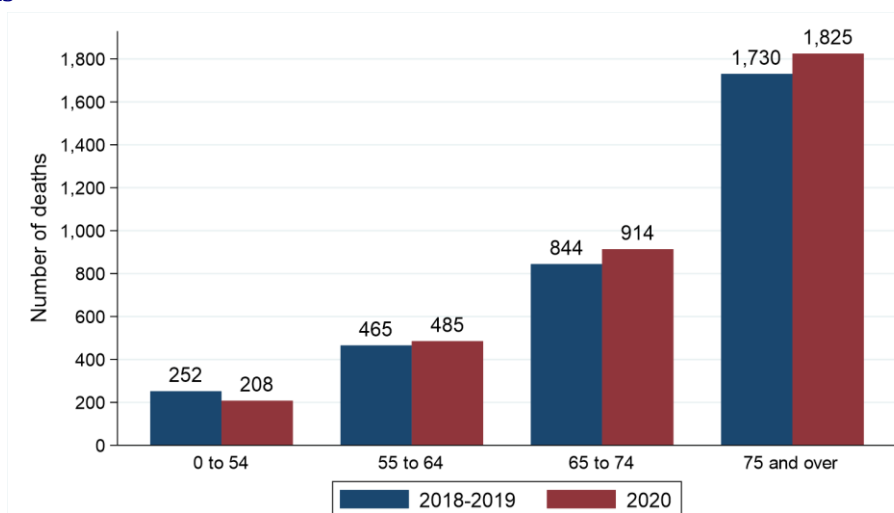
Excluding the first quarter of each year among people aged 0 to 54 the number of deaths from all cancers (ex NMSC) decreased by 17.5% from 252 per year in 2018 - 2019 to 208 in 2020. Between the same two time periods the number of deaths among people aged 65 to 74 increased by 8.3% from 844 per year to 914. The change in distribution of deaths by age between 2018 - 2019 and 2020 was statistically significant ($p = 0.030$).

Table 15: Number and proportion of all cancer (ex NMSC) deaths in April-December of 2018-2020 by age and period of death

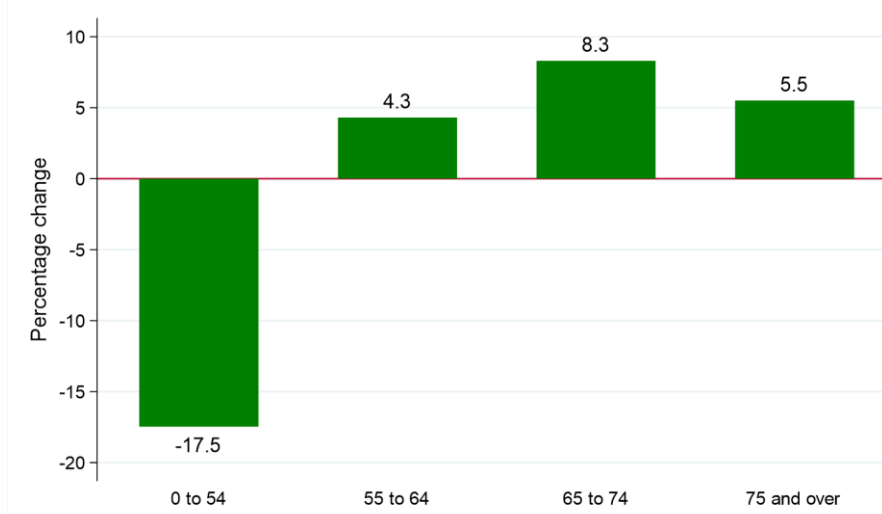
Age group	Period of death (Apr-Dec)		Percentage change
	2018-2019*	2020	
0 to 54	252 (7.7%)	208 (6.1%)	-17.5%
55 to 64	465 (14.1%)	485 (14.1%)	+4.3%
65 to 74	844 (25.7%)	914 (26.6%)	+8.3%
75 and over	1,730 (52.6%)	1,825 (53.2%)	+5.5%
All ages	3,290	3,432	+4.3%

* Average deaths per year rounded to the nearest integer. Column sums may thus differ slightly from the total.

Figure 15: All cancer (ex NMSC) deaths in April-December of 2018-2020 by age and period of death
(a) Number of deaths



(b) Percentage change from 2018-2019 to 2020 in number of all cancer (ex NMSC) deaths by age at death



HEALTH AND SOCIAL CARE TRUST

Excluding the first quarter of each year among residents of Western HSCT the number of deaths from all cancers (ex NMSC) decreased by 3.9% from 512 per year in 2018 - 2019 to 492 in 2020. Between the same two time periods the number of deaths among residents of South Eastern HSCT increased by 10.2% from 645 per year to 711. The change in distribution of deaths by HSCT between 2018 - 2019 and 2020 was not statistically significant.

Table 16: Number and proportion of all cancer (ex NMSC) deaths in April-December of 2018-2020 by Health and Social Care Trust and period of death

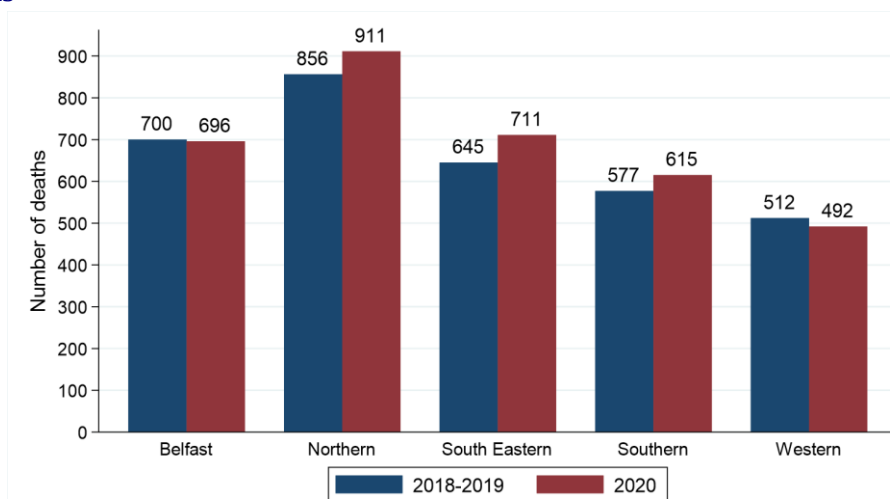
Health and Social Care Trust	Period of death (Apr-Dec)		Percentage change
	2018-2019*	2020	
Belfast HSCT	700 (21.3%)	696 (20.3%)	-0.6%
Northern HSCT	856 (26.0%)	911 (26.5%)	+6.4%
South Eastern HSCT	645 (19.6%)	711 (20.7%)	+10.2%
Southern HSCT	577 (17.5%)	615 (17.9%)	+6.6%
Western HSCT	512 (15.6%)	492 (14.3%)	-3.9%
All persons	3,290	3,432	+4.3%

* Average deaths per year rounded to the nearest integer. Column sums may thus differ slightly from the total.

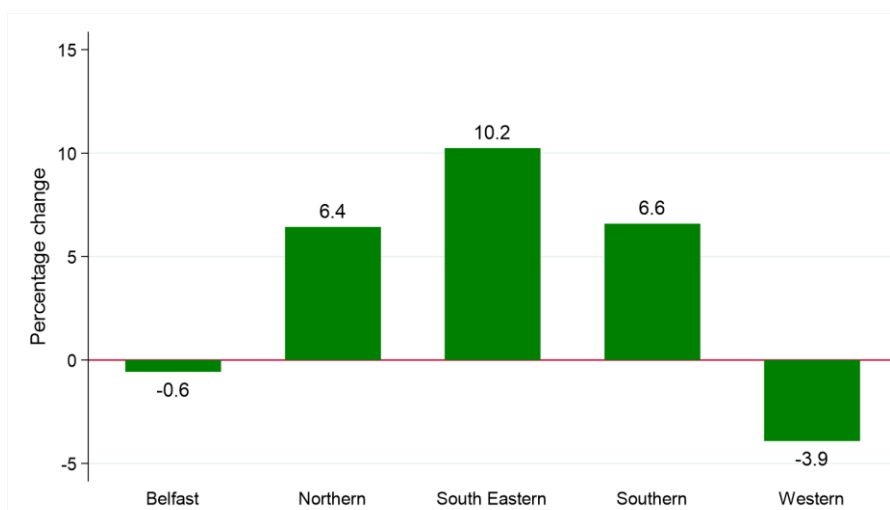
Note: Deaths with unknown Health and Social Care Trust are included in totals

Figure 16: All cancer (ex NMSC) deaths in April-December of 2018-2020 by Health and Social Care Trust and period of death

(a) Number of deaths



(b) Percentage change from 2018-2019 to 2020 in number of all cancer (ex NMSC) deaths by Health and Social Care Trust



DEPRIVATION

Excluding the first quarter of each year among residents of the most deprived areas the number of deaths from all cancers (ex NMSC) increased by 8.5% from 659 per year in 2018 - 2019 to 715 in 2020. Between the same two time periods the number of deaths among residents of the least deprived areas increased by 6.5% from 627 per year to 668. The change in distribution of deaths by deprivation quintile between 2018 - 2019 and 2020 was not statistically significant.

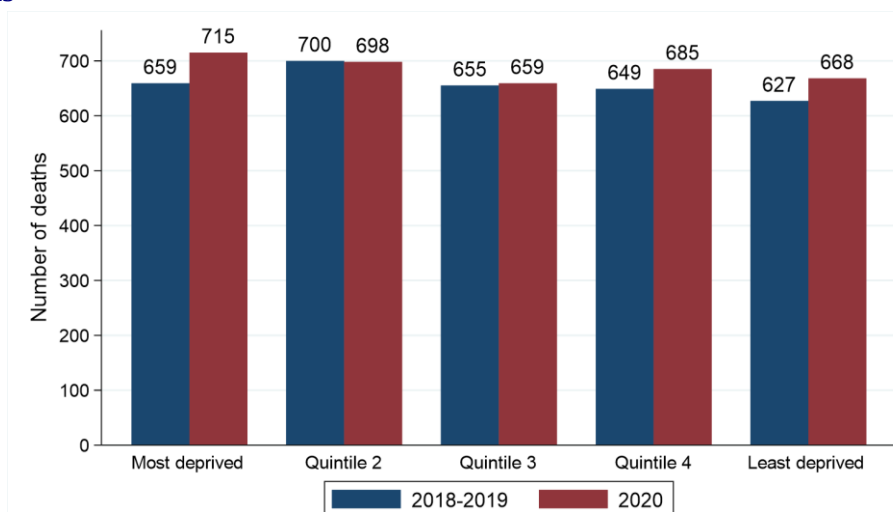
Table 17: Number and proportion of all cancer (ex NMSC) deaths in April-December of 2018-2020 by deprivation quintile and period of death

Deprivation quintile	Period of death (Apr-Dec)		Percentage change
	2018-2019*	2020	
Most deprived	659 (20.0%)	715 (20.8%)	+8.5%
Quintile 2	700 (21.3%)	698 (20.3%)	-0.3%
Quintile 3	655 (19.9%)	659 (19.2%)	+0.6%
Quintile 4	649 (19.7%)	685 (20.0%)	+5.5%
Least deprived	627 (19.1%)	668 (19.5%)	+6.5%
Northern Ireland	3,290	3,432	+4.3%

* Average deaths per year rounded to the nearest integer. Column sums may thus differ slightly from the total.

Note: Deaths with unknown deprivation quintile are included in totals

Figure 17: All cancer (ex NMSC) deaths in April-December of 2018-2020 by deprivation quintile and period of death
(a) Number of deaths



(b) Percentage change from 2018-2019 to 2020 in number of all cancer (ex NMSC) deaths by deprivation quintile

