

Recent trends in the number of patients with pathology samples indicating cancer in Northern Ireland (excludes samples from Altnagelvin Laboratory)

August 2021 Update

Acknowledgements: The Northern Ireland Cancer Registry (NICR) is funded by the Public Health Agency. NICR uses data provided by patients and collected by the health service as part of their care and support.



Contents

	<u>Page</u>
Summary	3
Patients with pathology samples indicating cancer - All persons	6
Patients with pathology samples indicating cancer - Males	7
Patients with pathology samples indicating cancer - Females	8
Patients with pathology samples indicating cancer - Ages 0-69	9
Patients with pathology samples indicating cancer - Ages 70 and over	10
Patients with pathology samples indicating cancer - Belfast	11
Patients with pathology samples indicating cancer - Antrim	12
Patients with pathology samples indicating cancer - Craigavon	13
Patients with pathology samples indicating bowel cancer - All persons	14
Patients with pathology samples indicating bowel cancer - All persons, screening age	15
Patients with pathology samples indicating lung cancer - All persons	16
Patients with pathology samples indicating breast cancer - Females	17
Patients with pathology samples indicating breast cancer - Females, screening age	18
Patients with pathology samples indicating prostate cancer - Males	19
Patients with pathology samples indicating gynaecological cancer - Females	20
Patients with pathology samples indicating upper gastrointestinal cancer - All persons	21
Patients with pathology samples indicating head & neck cancer - All persons	22
Patients with pathology samples indicating urinary cancer - All persons	23
Patients with pathology samples indicating haematological cancer - All persons	24
Patients with pathology samples indicating malignant melanoma - All persons	25
Patients with pathology samples indicating non-melanoma skin cancer - All persons	26
Patients with pathology samples indicating other cancer - All persons	27
Notes	28

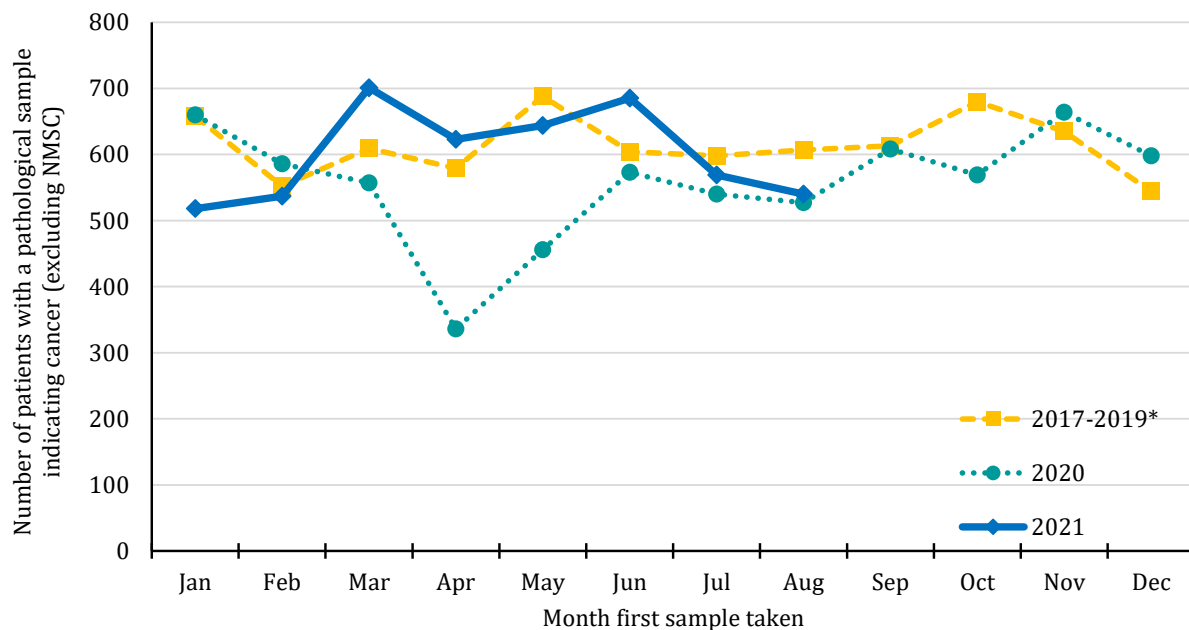
SUMMARY

Recent trends in the number of patients with pathology samples indicating cancer: Aug-21

- 1) This summary provides an overview of recent trends in the number of patients with pathology samples indicating cancer (excluding non-melanoma skin cancer, NMSC) whose first sample was taken from Jan-20 to Aug-21 in Northern Ireland.
- 2) These trends are contrasted with the annual average number of patients with pathology samples indicating cancer (ex NMSC) during 2017-2019 in order to provide an indication of the potential impact of the Covid-19 restrictions on diagnostic cancer services.
- 3) Data are sourced from three of the four NHS pathology laboratories in NI (Belfast, Antrim, Craigavon), which are usually provided to NICR on a monthly basis. **Altnagelvin laboratory is excluded as a change in recording systems led to an undercount in the number of reported samples in Jan-Apr 2021.**

Trends in patients with pathology samples indicating cancer by month and year first sample taken

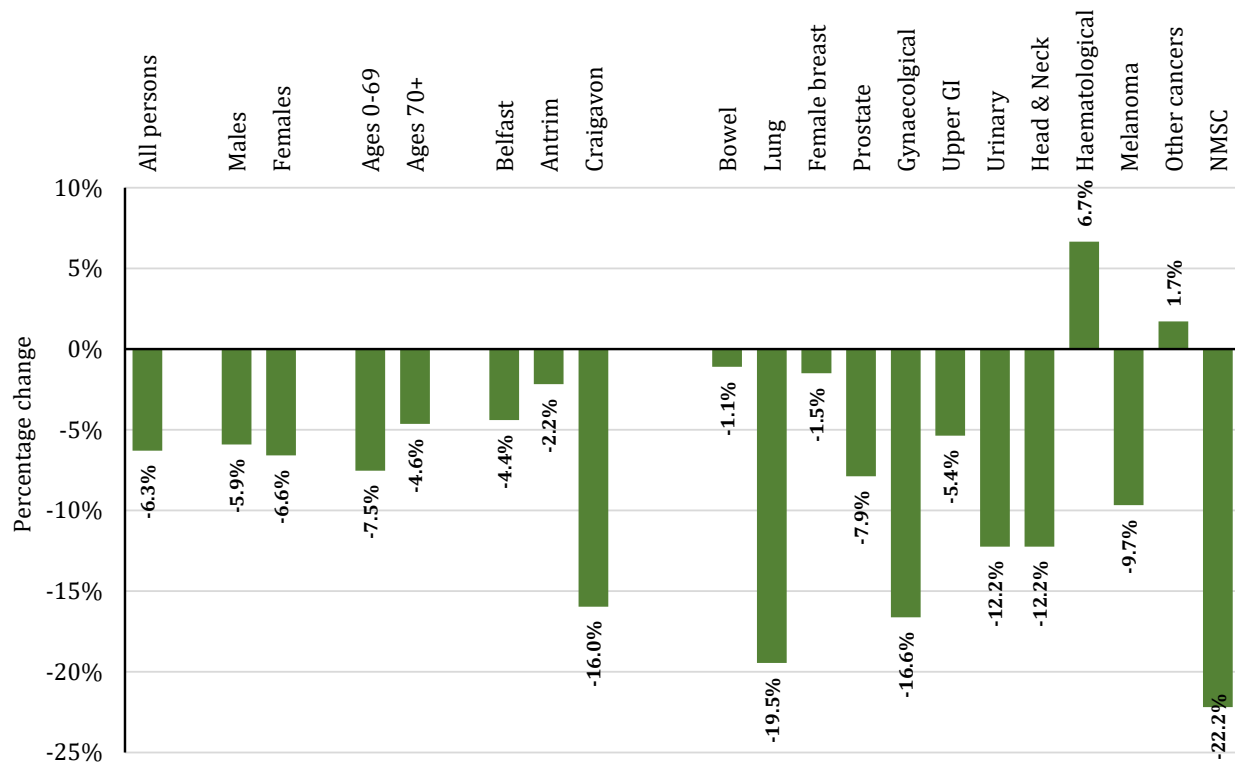
- 4) From Mar-20 to Aug-21 the number of patients with a pathological sample indicating cancer was 6.3% lower than the average number for the same time period in 2017-2019.



Year sample taken	Month sample taken											
	Jan	Feb	Mar	Apr	May	Jun	Jul	Aug	Sep	Oct	Nov	Dec
2017-2019*	658	552	609	579	688	604	598	607	613	680	635	544
2020	660	586	557	336	456	573	540	527	608	569	664	598
2021	518	537	701	623	644	685	569	540				

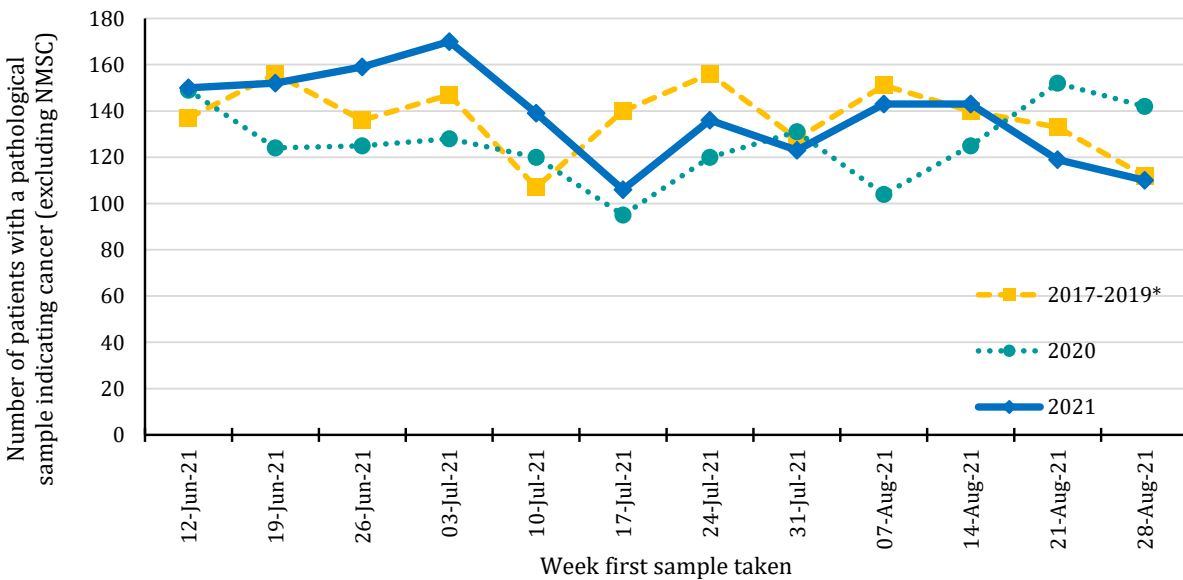
*Annual average

- 5) From Mar-20 to Aug-21 there was a 5.9% decrease among males and a 6.6% decrease among females compared to 2017-2019. A decrease of 7.5% occurred in the number of patients aged 0-69 years, while there was a decrease of 4.6% among those aged 70 and older. Decreases were greatest in Craigavon (16.0%).
- 6) Compared to the annual average in 2017-2019, from Mar-20 to Aug-21 the number of patients with a pathology sample indicating lung cancer decreased by 19.5%, while those indicating prostate cancer decreased by 7.9%. Increases were recorded for haematological cancer, while decreases of more than 10% occurred for gynaecological cancer, head and neck cancer, urinary cancer and non-melanoma skin cancer.



Trends in patients with pathology samples indicating cancer by week and year first sample taken

7) There was an 0.4% increase in the number of patients with a pathology sample indicating cancer in the twelve weeks up to 28-Aug-21 compared to the average value in the equivalent weeks in 2017-2019.

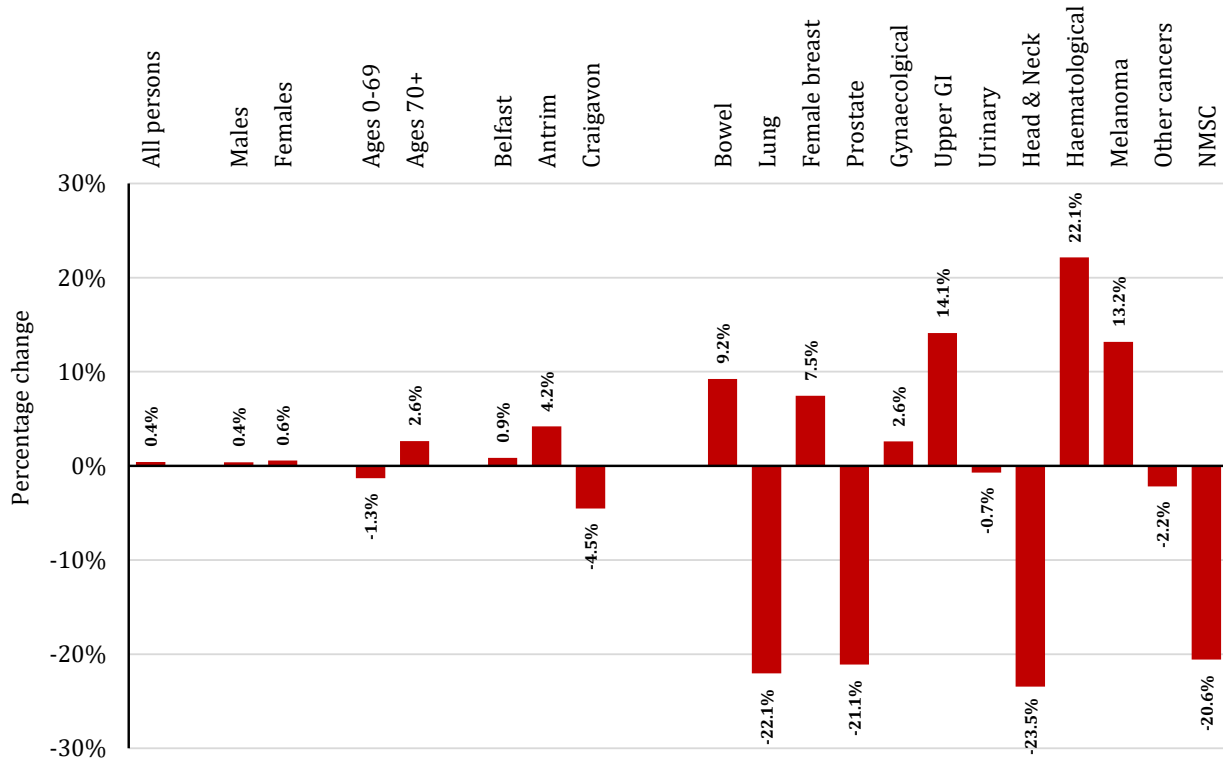


Year sample taken	Week sample taken**											
	12-Jun-21	19-Jun-21	26-Jun-21	03-Jul-21	10-Jul-21	17-Jul-21	24-Jul-21	31-Jul-21	07-Aug-21	14-Aug-21	21-Aug-21	28-Aug-21
2017-2019*	137	156	136	147	107	140	156	128	151	140	133	112
2020	149	124	125	128	120	95	120	131	104	125	152	142
2021	150	152	159	170	139	106	136	123	143	143	119	110

*Annual average

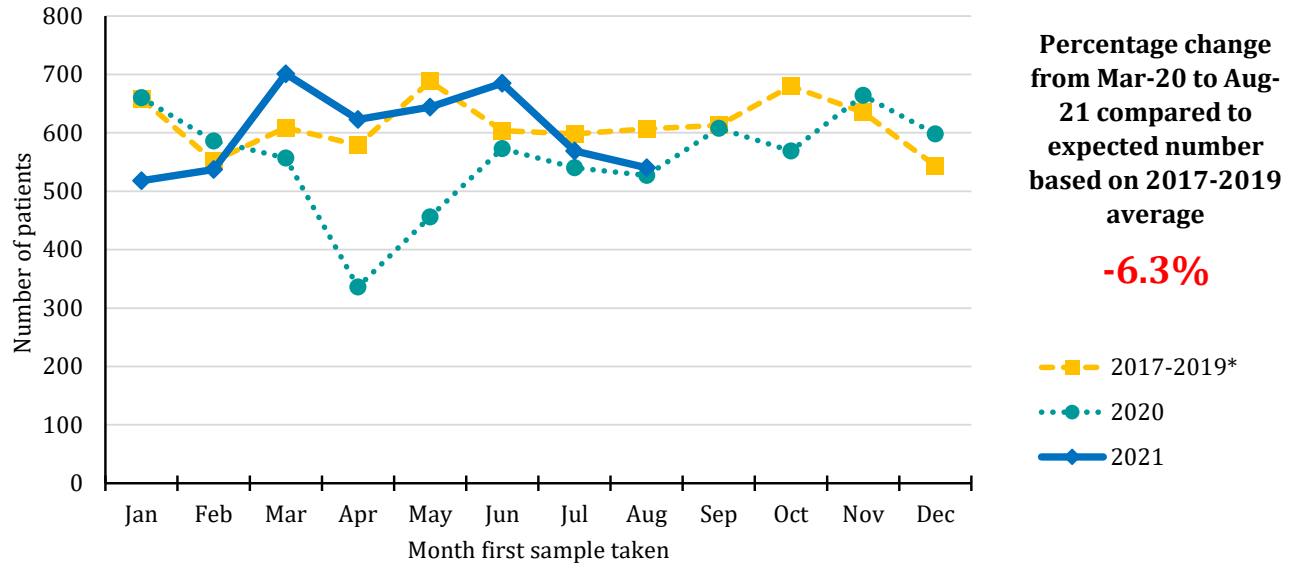
** The date of the end of the week in which the sample was taken in 2021. Data for previous years refers to the equivalent Sun-Sat week in those years.

- 8) In the twelve weeks up to 28-Aug-21 there was a 0.4% increase in male patients and a 0.6% increase in female patients compared to the same time period in 2017-2019. A decrease of 1.3% occurred in the number of patients aged 0-69 years, while there was an increase of 2.6% among those aged 70 and older. Decreases in the number of patients were recorded in Craigavon (4.5%), with increases in Belfast and Antrim.
- 9) Compared to the annual average in 2017-2019, in the twelve weeks up to 28-Aug-21 the number of patients with a pathology sample indicating lung cancer decreased by 22.1%, while those indicating prostate cancer decreased by 21.1%. Increases were recorded for female breast cancer, bowel cancer, haematological cancer, upper GI cancer, gynaecological cancer and melanoma, while decreases of more than 10% occurred for head and neck cancer and non-melanoma skin cancer.



Patients with pathology samples indicating cancer (ex NMSC): All persons

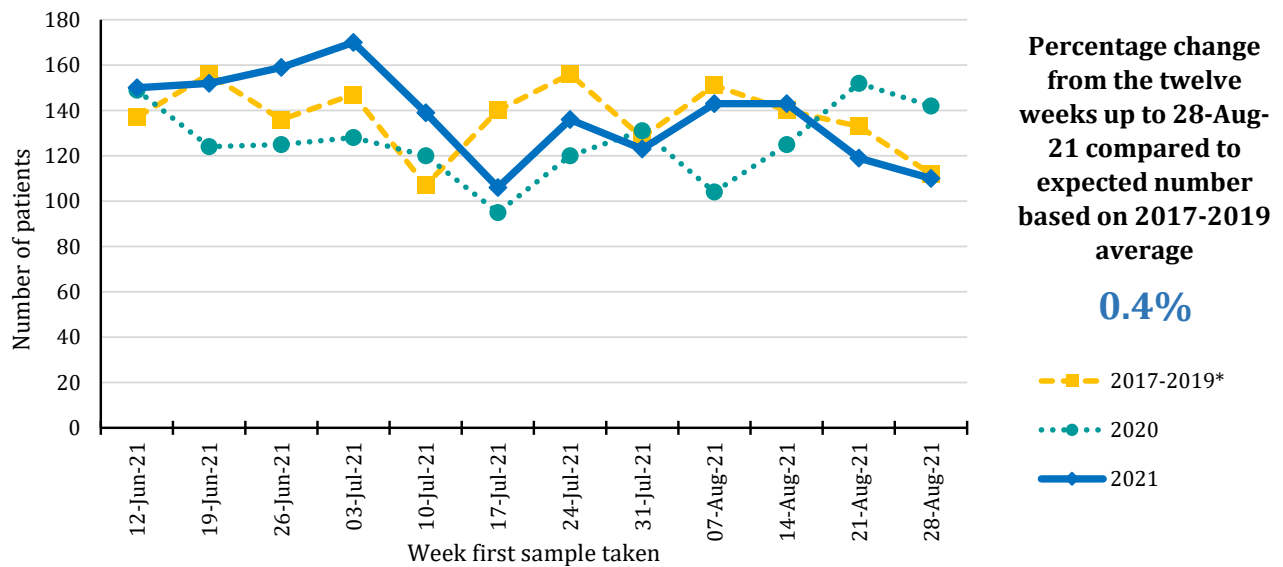
Trends in patients with pathology samples indicating cancer by month and year first sample taken



Year sample taken	Month sample taken											
	Jan	Feb	Mar	Apr	May	Jun	Jul	Aug	Sep	Oct	Nov	Dec
2017-2019*	658	552	609	579	688	604	598	607	613	680	635	544
2020	660	586	557	336	456	573	540	527	608	569	664	598
2021	518	537	701	623	644	685	569	540				

*Annual average

Trends in patients with pathology samples indicating cancer by week and year first sample taken



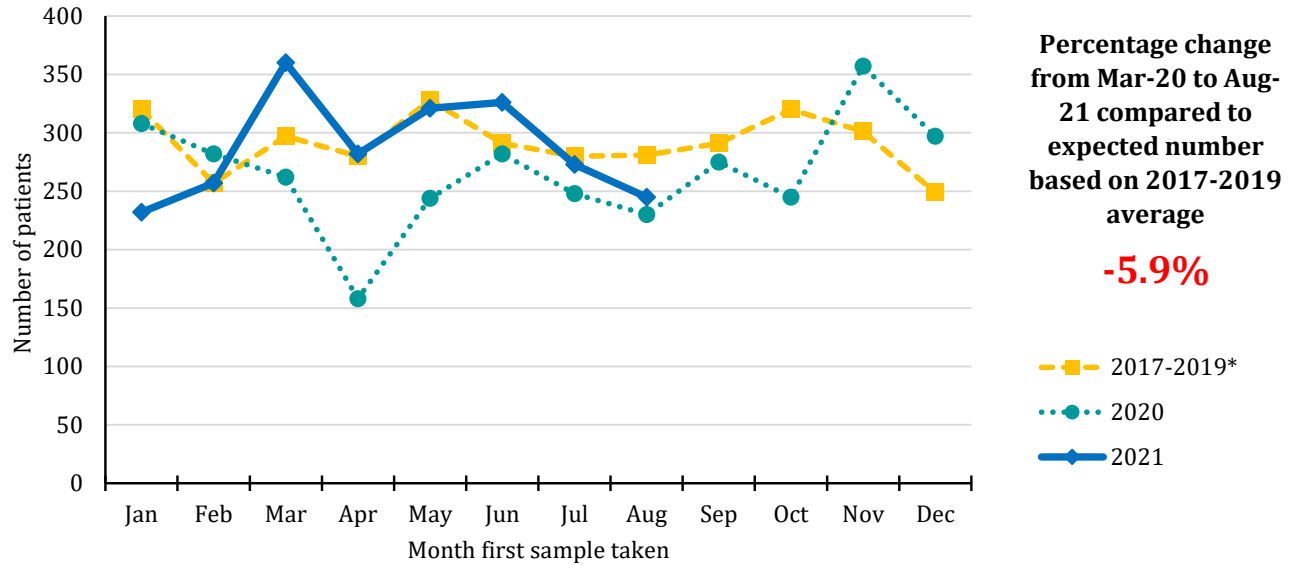
Year sample taken	Week sample taken**											
	12-Jun-21	19-Jun-21	26-Jun-21	03-Jul-21	10-Jul-21	17-Jul-21	24-Jul-21	31-Jul-21	07-Aug-21	14-Aug-21	21-Aug-21	28-Aug-21
2017-2019*	137	156	136	147	107	140	156	128	151	140	133	112
2020	149	124	125	128	120	95	120	131	104	125	152	142
2021	150	152	159	170	139	106	136	123	143	143	119	110

*Annual average

** The date of the end of the week in which the sample was taken in 2021. Data for previous years refers to the equivalent Sun-Sat week in those years.

Patients with pathology samples indicating cancer (ex NMSC): Males

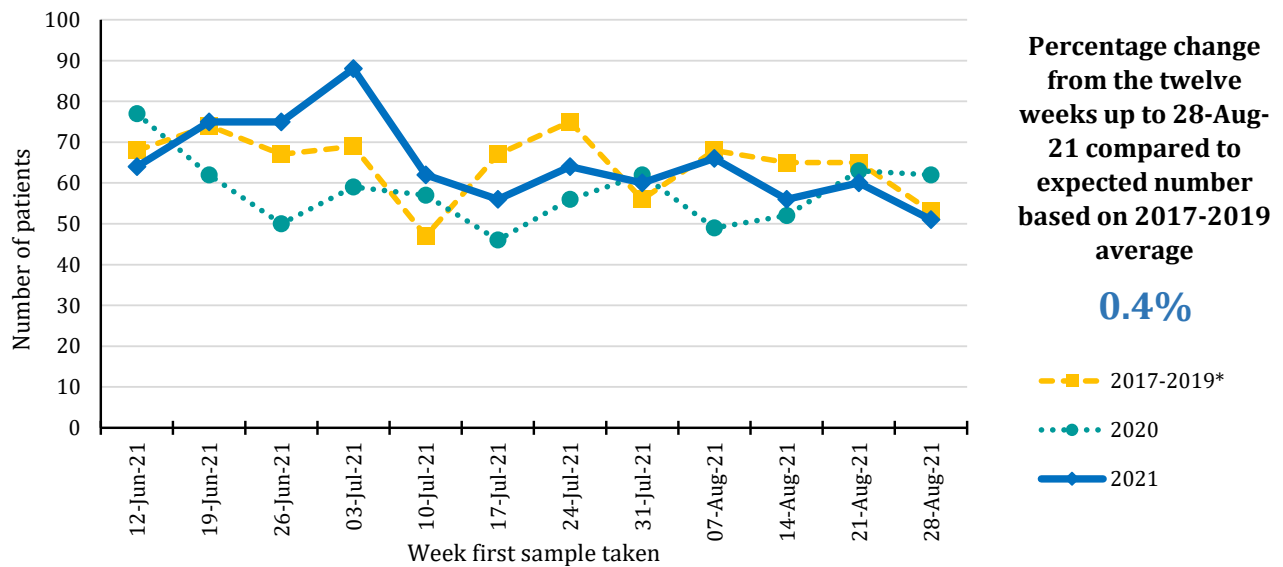
Trends in patients with pathology samples indicating cancer by month and year first sample taken



Year sample taken	Month sample taken											
	Jan	Feb	Mar	Apr	May	Jun	Jul	Aug	Sep	Oct	Nov	Dec
2017-2019*	320	257	297	280	328	291	280	281	291	320	301	249
2020	308	282	262	158	244	282	248	230	275	245	357	297
2021	232	257	360	282	321	326	273	245				

*Annual average

Trends in patients with pathology samples indicating cancer by week and year first sample taken



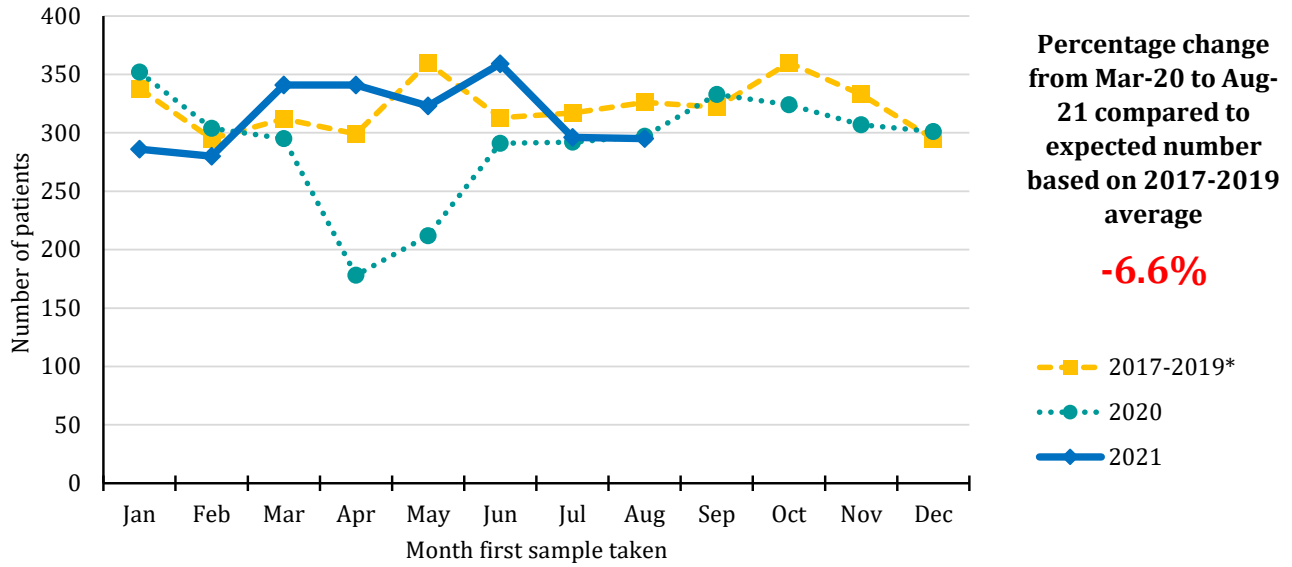
Year sample taken	Week sample taken**											
	12-Jun-21	19-Jun-21	26-Jun-21	03-Jul-21	10-Jul-21	17-Jul-21	24-Jul-21	31-Jul-21	07-Aug-21	14-Aug-21	21-Aug-21	28-Aug-21
2017-2019*	68	74	67	69	47	67	75	56	68	65	65	53
2020	77	62	50	59	57	46	56	62	49	52	63	62
2021	64	75	75	88	62	56	64	60	66	56	60	51

*Annual average

** The date of the end of the week in which the sample was taken in 2021. Data for previous years refers to the equivalent Sun-Sat week in those years.

Patients with pathology samples indicating cancer (ex NMSC): Females

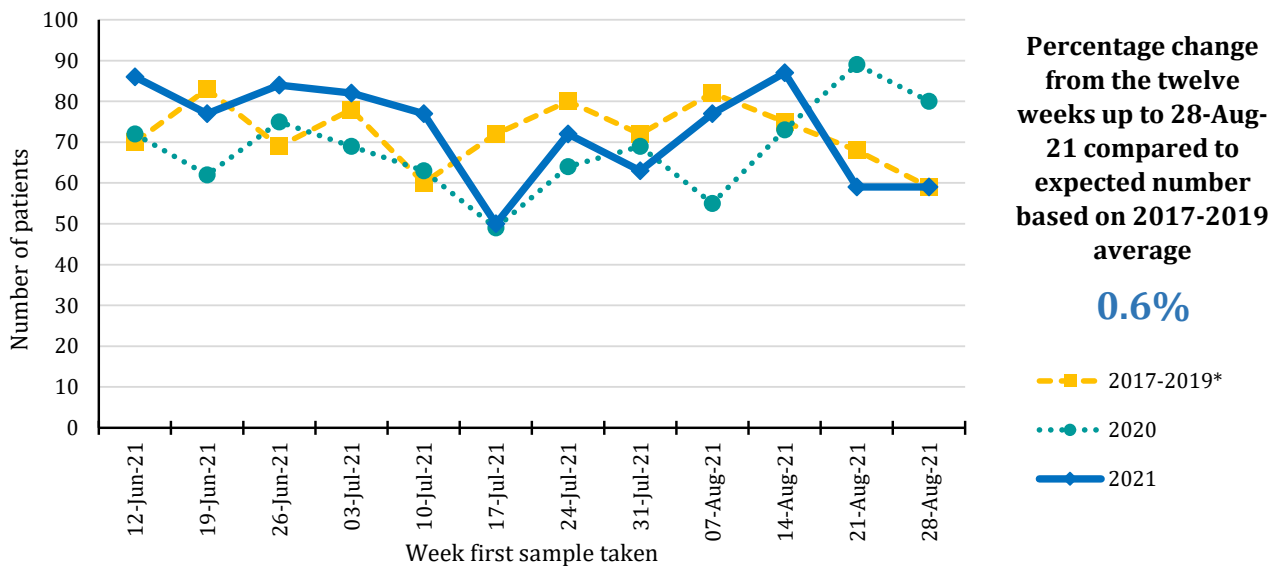
Trends in patients with pathology samples indicating cancer by month and year first sample taken



Year sample taken	Month sample taken											
	Jan	Feb	Mar	Apr	May	Jun	Jul	Aug	Sep	Oct	Nov	Dec
2017-2019*	338	295	312	299	360	313	317	326	322	360	333	295
2020	352	304	295	178	212	291	292	297	333	324	307	301
2021	286	280	341	341	323	359	296	295				

*Annual average

Trends in patients with pathology samples indicating cancer by week and year first sample taken



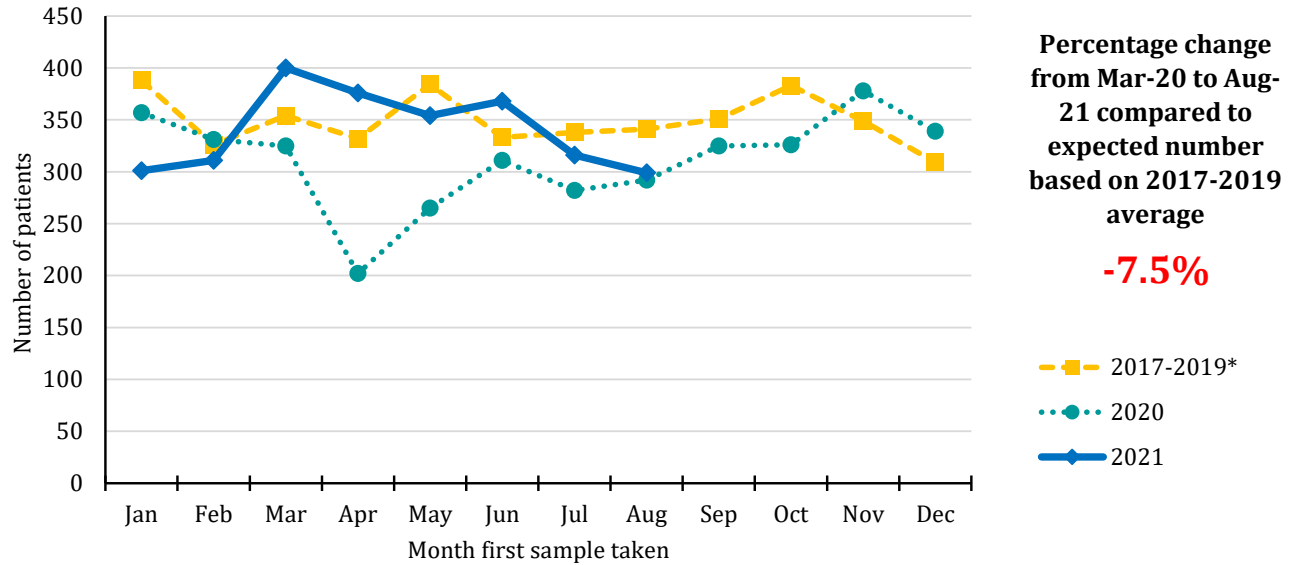
Year sample taken	Week sample taken**											
	12-Jun-21	19-Jun-21	26-Jun-21	03-Jul-21	10-Jul-21	17-Jul-21	24-Jul-21	31-Jul-21	07-Aug-21	14-Aug-21	21-Aug-21	28-Aug-21
2017-2019*	70	83	69	78	60	72	80	72	82	75	68	59
2020	72	62	75	69	63	49	64	69	55	73	89	80
2021	86	77	84	82	77	50	72	63	77	87	59	59

*Annual average

** The date of the end of the week in which the sample was taken in 2021. Data for previous years refers to the equivalent Sun-Sat week in those years.

Patients with pathology samples indicating cancer (ex NMSC): Ages 0 to 69

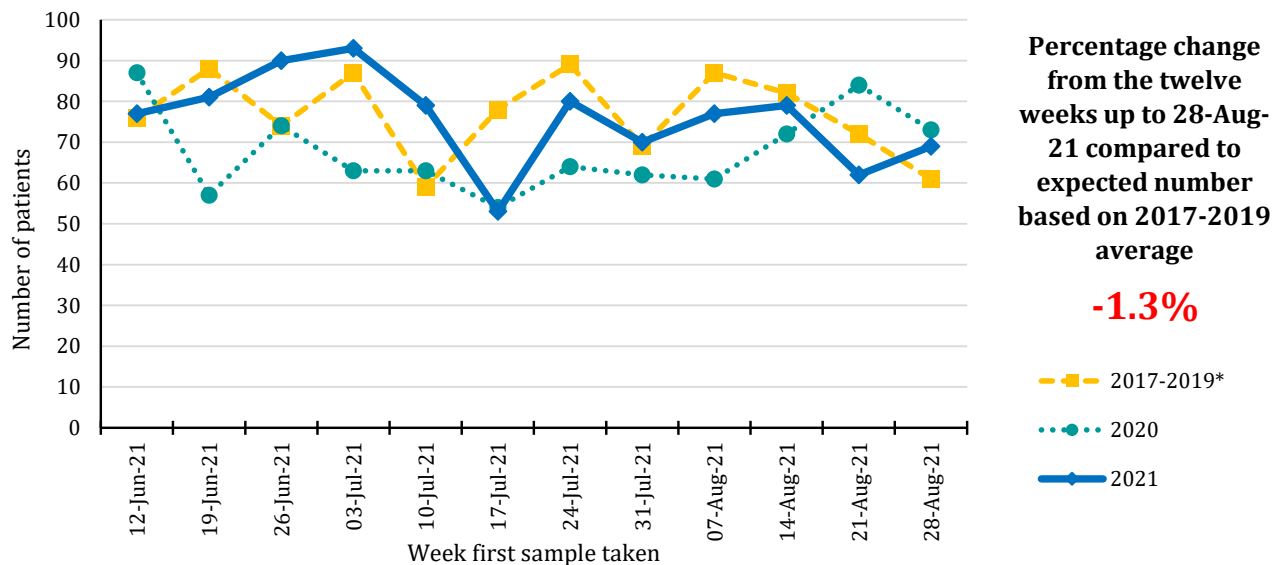
Trends in patients with pathology samples indicating cancer by month and year first sample taken



Year sample taken	Month sample taken											
	Jan	Feb	Mar	Apr	May	Jun	Jul	Aug	Sep	Oct	Nov	Dec
2017-2019*	388	326	354	332	384	333	338	341	351	383	349	309
2020	357	331	325	202	265	311	282	292	325	326	378	339
2021	301	311	400	376	354	368	316	299				

*Annual average

Trends in patients with pathology samples indicating cancer by week and year first sample taken



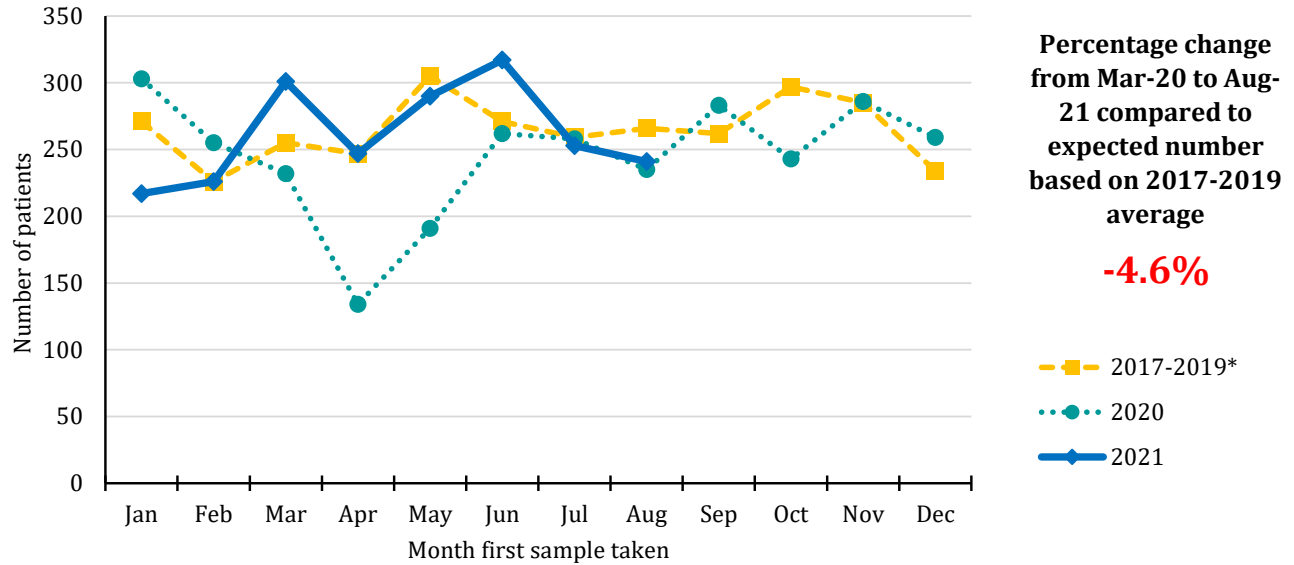
Year sample taken	Week sample taken**											
	12-Jun-21	19-Jun-21	26-Jun-21	03-Jul-21	10-Jul-21	17-Jul-21	24-Jul-21	31-Jul-21	07-Aug-21	14-Aug-21	21-Aug-21	28-Aug-21
2017-2019*	76	88	74	87	59	78	89	69	87	82	72	61
2020	87	57	74	63	63	54	64	62	61	72	84	73
2021	77	81	90	93	79	53	80	70	77	79	62	69

*Annual average

** The date of the end of the week in which the sample was taken in 2021. Data for previous years refers to the equivalent Sun-Sat week in those years.

Patients with pathology samples indicating cancer (ex NMSC): Ages 70 and over

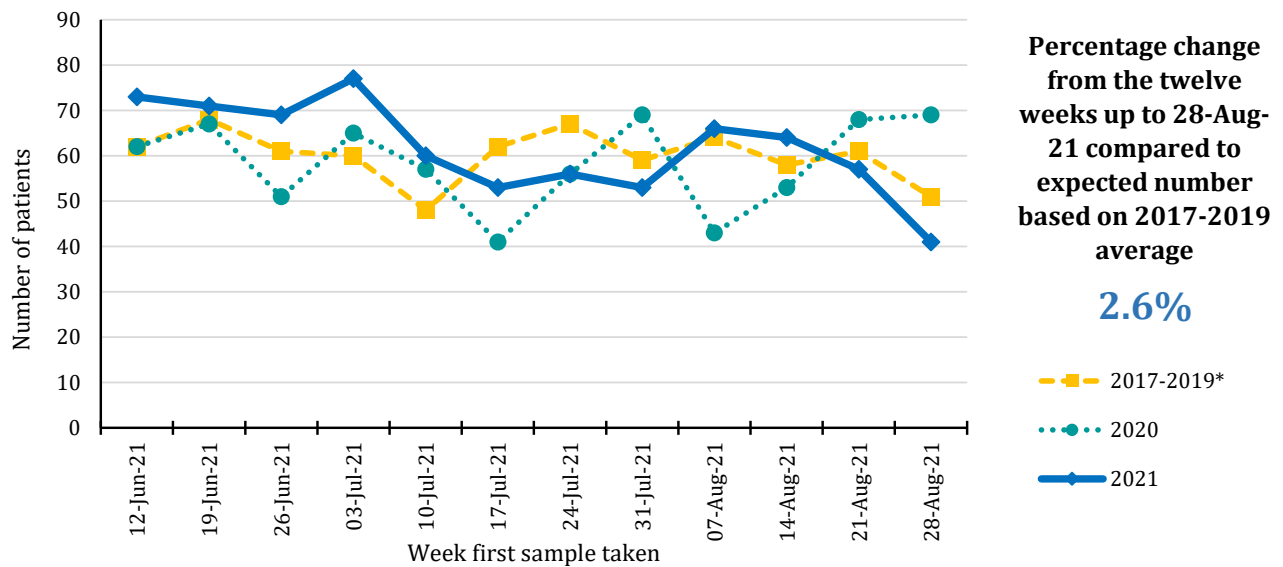
Trends in patients with pathology samples indicating cancer by month and year first sample taken



Year sample taken	Month sample taken											
	Jan	Feb	Mar	Apr	May	Jun	Jul	Aug	Sep	Oct	Nov	Dec
2017-2019*	271	226	255	247	305	271	259	266	262	297	285	234
2020	303	255	232	134	191	262	258	235	283	243	286	259
2021	217	226	301	247	290	317	253	241				

*Annual average

Trends in patients with pathology samples indicating cancer by week and year first sample taken



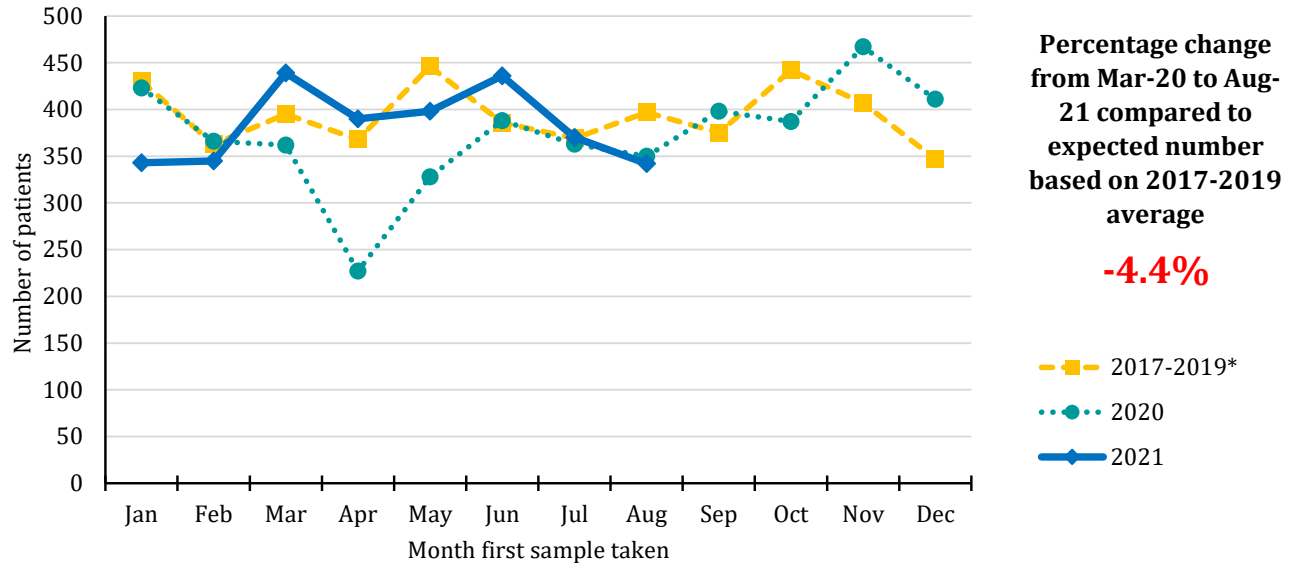
Year sample taken	Week sample taken**											
	12-Jun-21	19-Jun-21	26-Jun-21	03-Jul-21	10-Jul-21	17-Jul-21	24-Jul-21	31-Jul-21	07-Aug-21	14-Aug-21	21-Aug-21	28-Aug-21
2017-2019*	62	68	61	60	48	62	67	59	64	58	61	51
2020	62	67	51	65	57	41	56	69	43	53	68	69
2021	73	71	69	77	60	53	56	53	66	64	57	41

*Annual average

** The date of the end of the week in which the sample was taken in 2021. Data for previous years refers to the equivalent Sun-Sat week in those years.

Patients with pathology samples indicating cancer (ex NMSC): Belfast laboratory

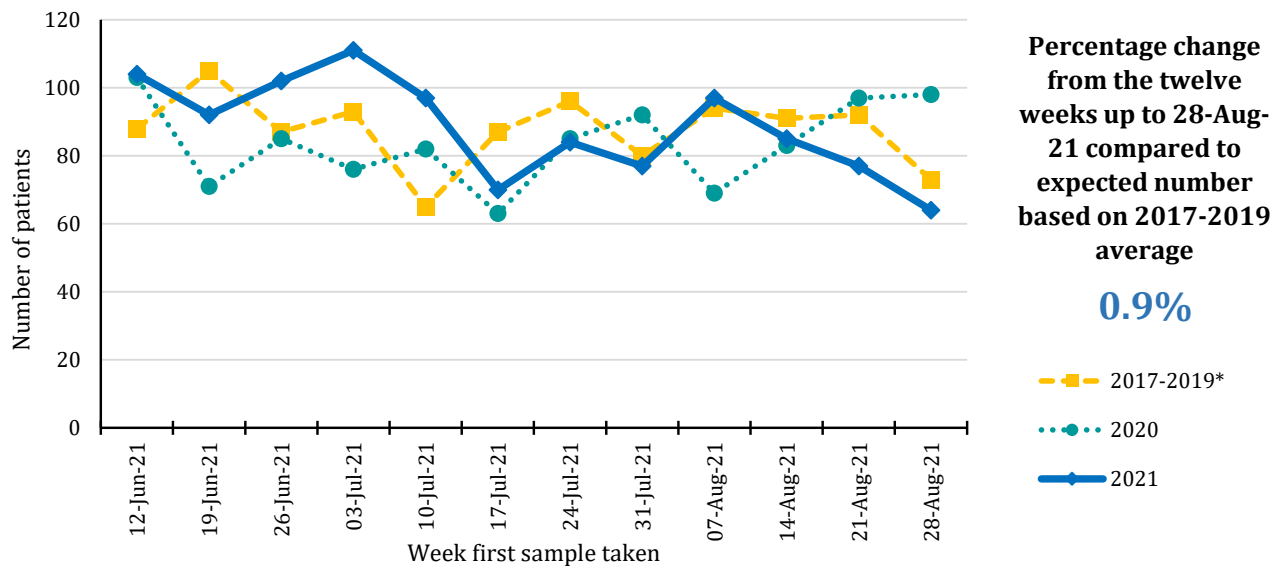
Trends in patients with pathology samples indicating cancer by month and year first sample taken



Year sample taken	Month sample taken											
	Jan	Feb	Mar	Apr	May	Jun	Jul	Aug	Sep	Oct	Nov	Dec
2017-2019*	430	363	395	368	446	386	369	397	375	442	407	347
2020	423	366	362	227	328	388	363	350	398	387	467	411
2021	343	345	439	390	398	436	370	342				

*Annual average

Trends in patients with pathology samples indicating cancer by week and year first sample taken



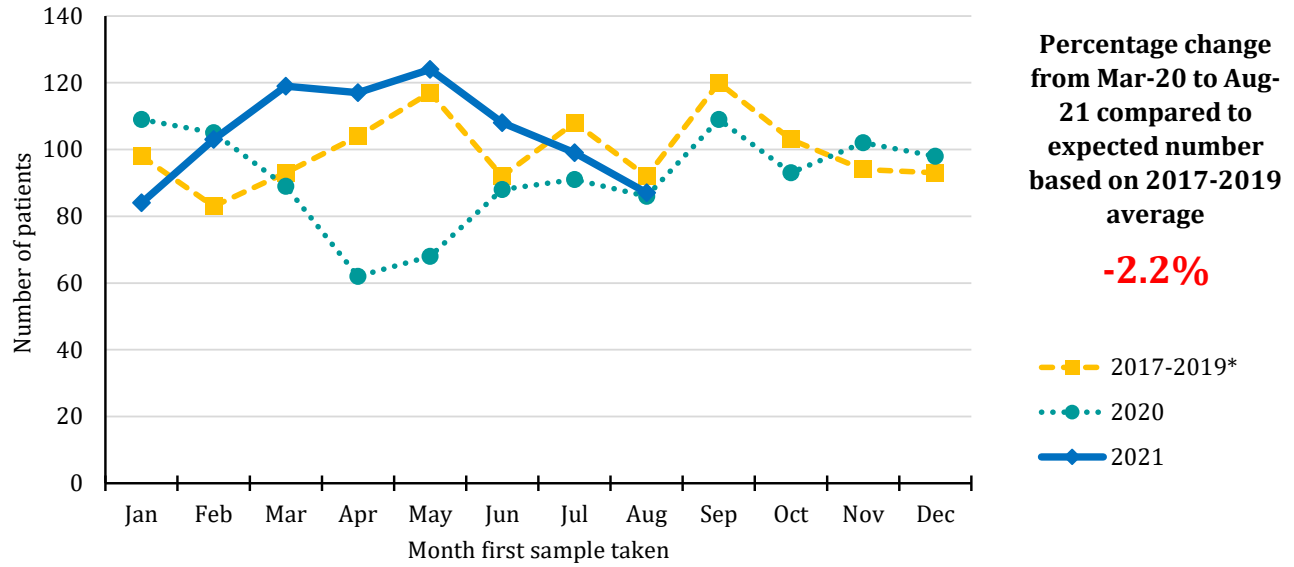
Year sample taken	Week sample taken**											
	12-Jun-21	19-Jun-21	26-Jun-21	03-Jul-21	10-Jul-21	17-Jul-21	24-Jul-21	31-Jul-21	07-Aug-21	14-Aug-21	21-Aug-21	28-Aug-21
2017-2019*	88	105	87	93	65	87	96	80	94	91	92	73
2020	103	71	85	76	82	63	85	92	69	83	97	98
2021	104	92	102	111	97	70	84	77	97	85	77	64

*Annual average

** The date of the end of the week in which the sample was taken in 2021. Data for previous years refers to the equivalent Sun-Sat week in those years.

Patients with pathology samples indicating cancer (ex NMSC): Antrim laboratory

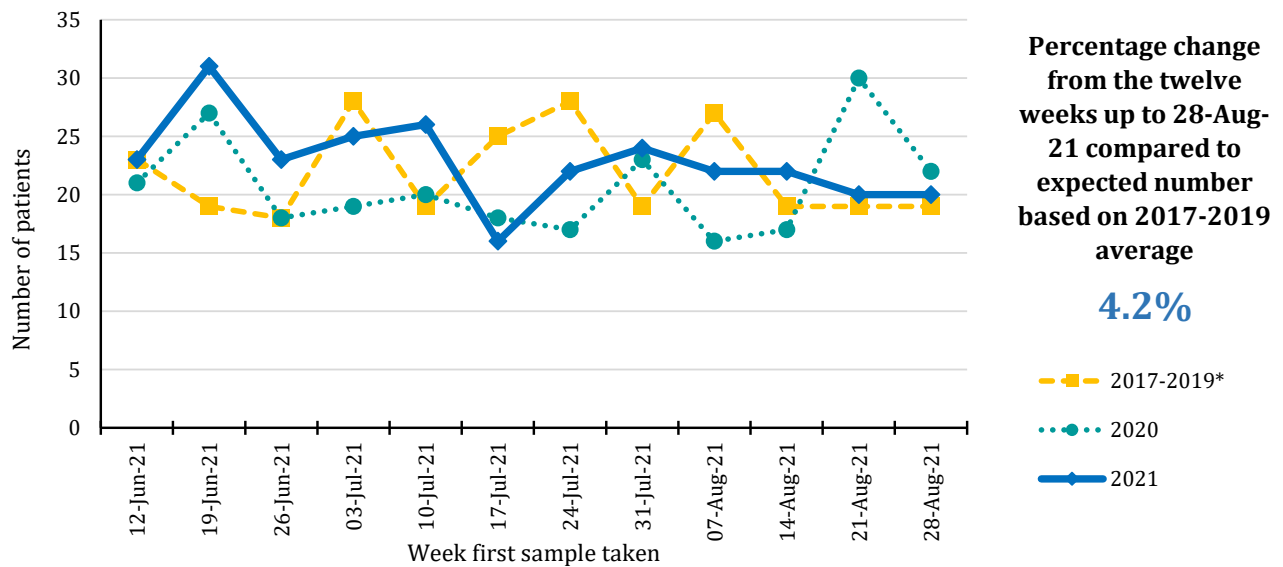
Trends in patients with pathology samples indicating cancer by month and year first sample taken



Year sample taken	Month sample taken											
	Jan	Feb	Mar	Apr	May	Jun	Jul	Aug	Sep	Oct	Nov	Dec
2017-2019*	98	83	93	104	117	92	108	92	120	103	94	93
2020	109	105	89	62	68	88	91	86	109	93	102	98
2021	84	103	119	117	124	108	99	87				

*Annual average

Trends in patients with pathology samples indicating cancer by week and year first sample taken



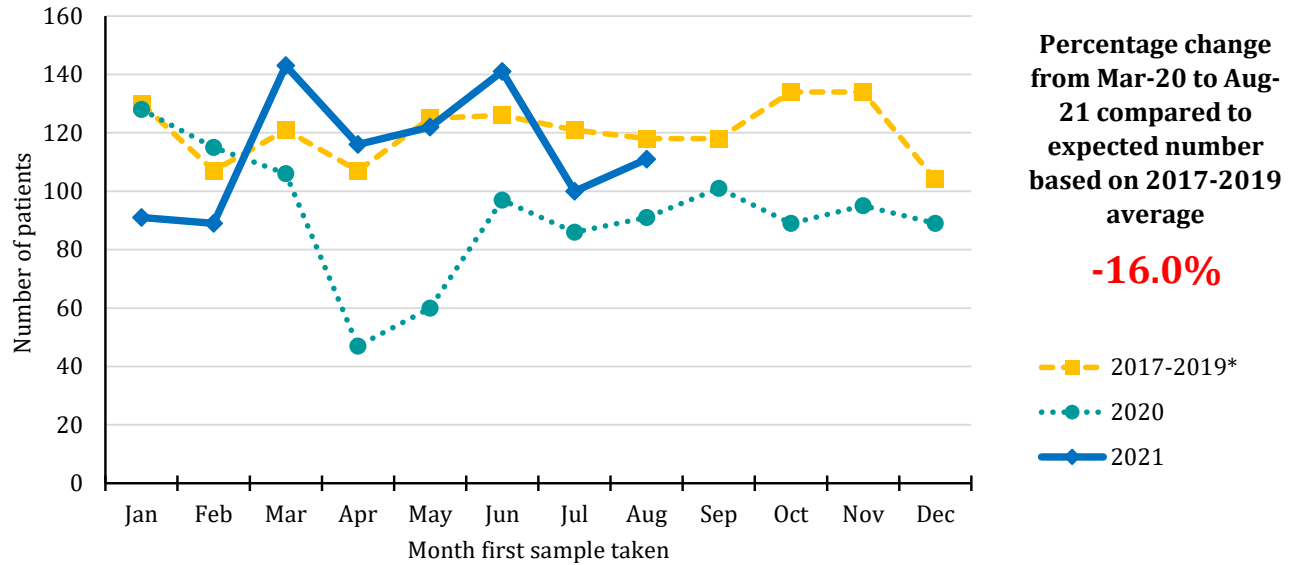
Year sample taken	Week sample taken**											
	12-Jun-21	19-Jun-21	26-Jun-21	03-Jul-21	10-Jul-21	17-Jul-21	24-Jul-21	31-Jul-21	07-Aug-21	14-Aug-21	21-Aug-21	28-Aug-21
2017-2019*	23	19	18	28	19	25	28	19	27	19	19	19
2020	21	27	18	19	20	18	17	23	16	17	30	22
2021	23	31	23	25	26	16	22	24	22	22	20	20

*Annual average

** The date of the end of the week in which the sample was taken in 2021. Data for previous years refers to the equivalent Sun-Sat week in those years.

Patients with pathology samples indicating cancer (ex NMSC): Craigavon laboratory

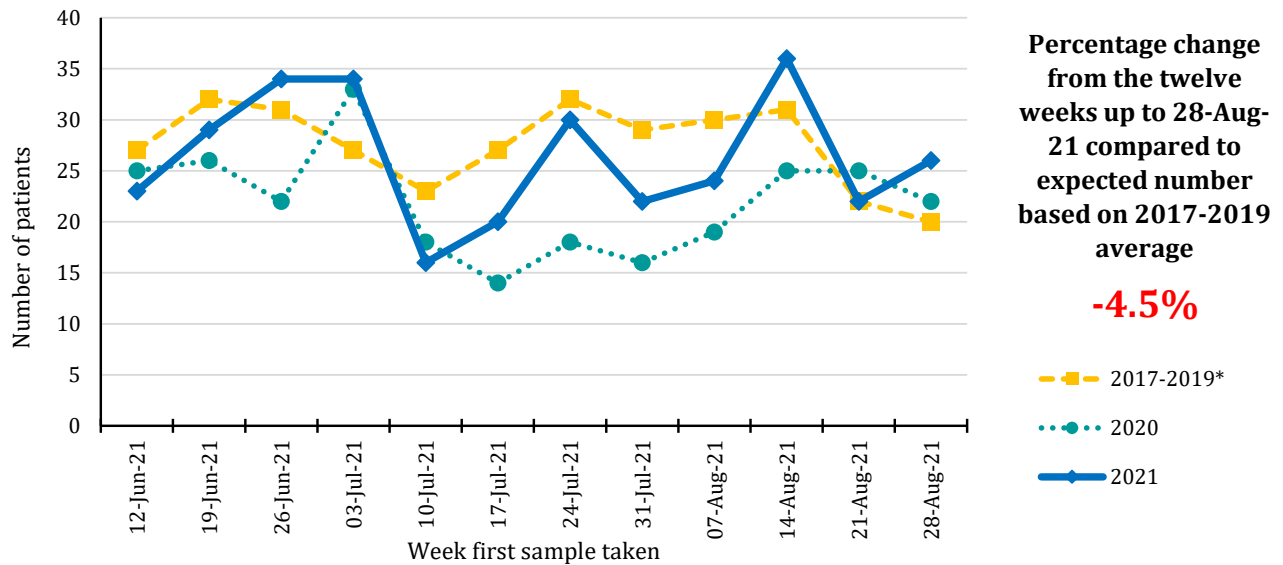
Trends in patients with pathology samples indicating cancer by month and year first sample taken



Year sample taken	Month sample taken											
	Jan	Feb	Mar	Apr	May	Jun	Jul	Aug	Sep	Oct	Nov	Dec
2017-2019*	130	107	121	107	125	126	121	118	118	134	134	104
2020	128	115	106	47	60	97	86	91	101	89	95	89
2021	91	89	143	116	122	141	100	111				

*Annual average

Trends in patients with pathology samples indicating cancer by week and year first sample taken



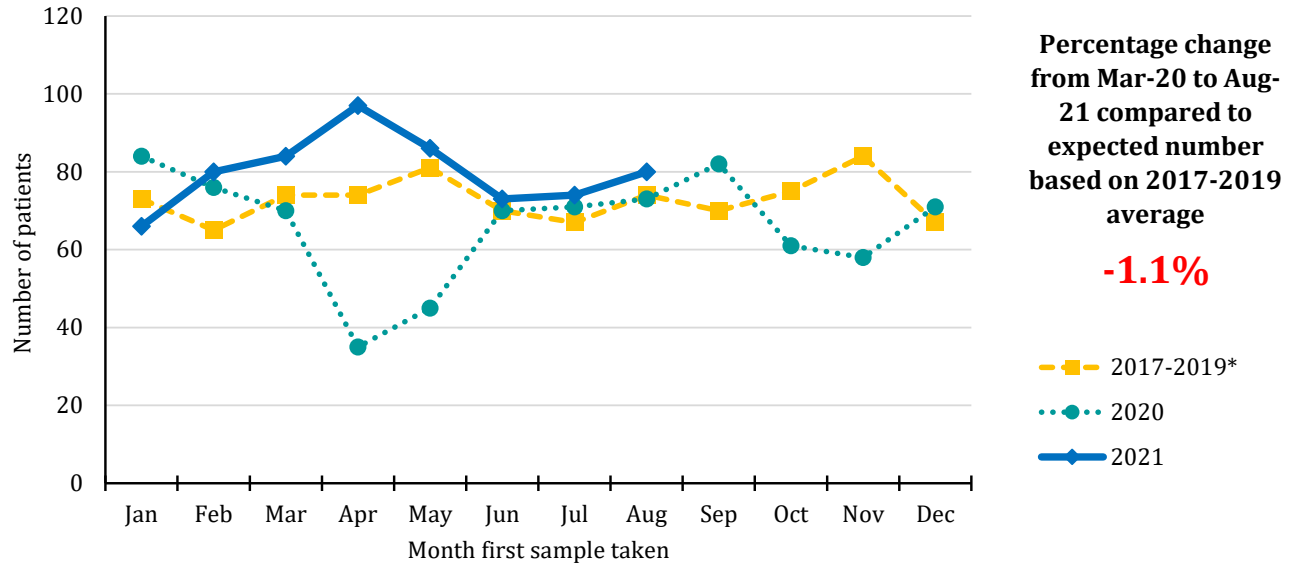
Year sample taken	Week sample taken**											
	12-Jun-21	19-Jun-21	26-Jun-21	03-Jul-21	10-Jul-21	17-Jul-21	24-Jul-21	31-Jul-21	07-Aug-21	14-Aug-21	21-Aug-21	28-Aug-21
2017-2019*	27	32	31	27	23	27	32	29	30	31	22	20
2020	25	26	22	33	18	14	18	16	19	25	25	22
2021	23	29	34	34	16	20	30	22	24	36	22	26

*Annual average

** The date of the end of the week in which the sample was taken in 2021. Data for previous years refers to the equivalent Sun-Sat week in those years.

Patients with pathology samples indicating bowel cancer: All persons

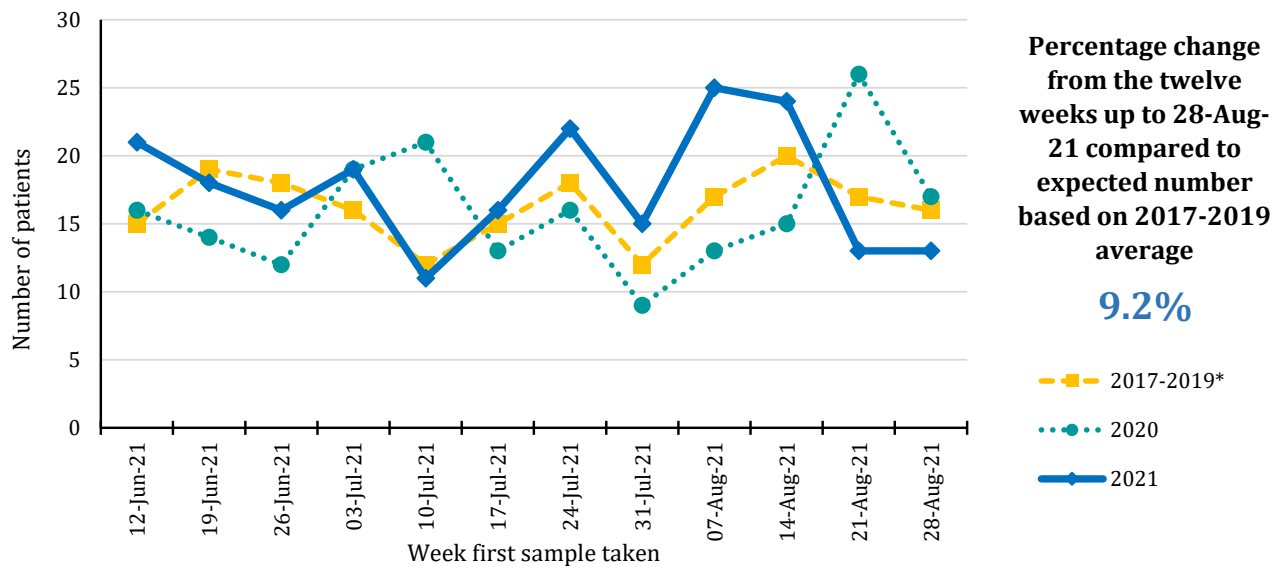
Trends in patients with pathology samples indicating cancer by month and year first sample taken



Year sample taken	Month sample taken											
	Jan	Feb	Mar	Apr	May	Jun	Jul	Aug	Sep	Oct	Nov	Dec
2017-2019*	73	65	74	74	81	70	67	74	70	75	84	67
2020	84	76	70	35	45	70	71	73	82	61	58	71
2021	66	80	84	97	86	73	74	80				

*Annual average

Trends in patients with pathology samples indicating cancer by week and year first sample taken



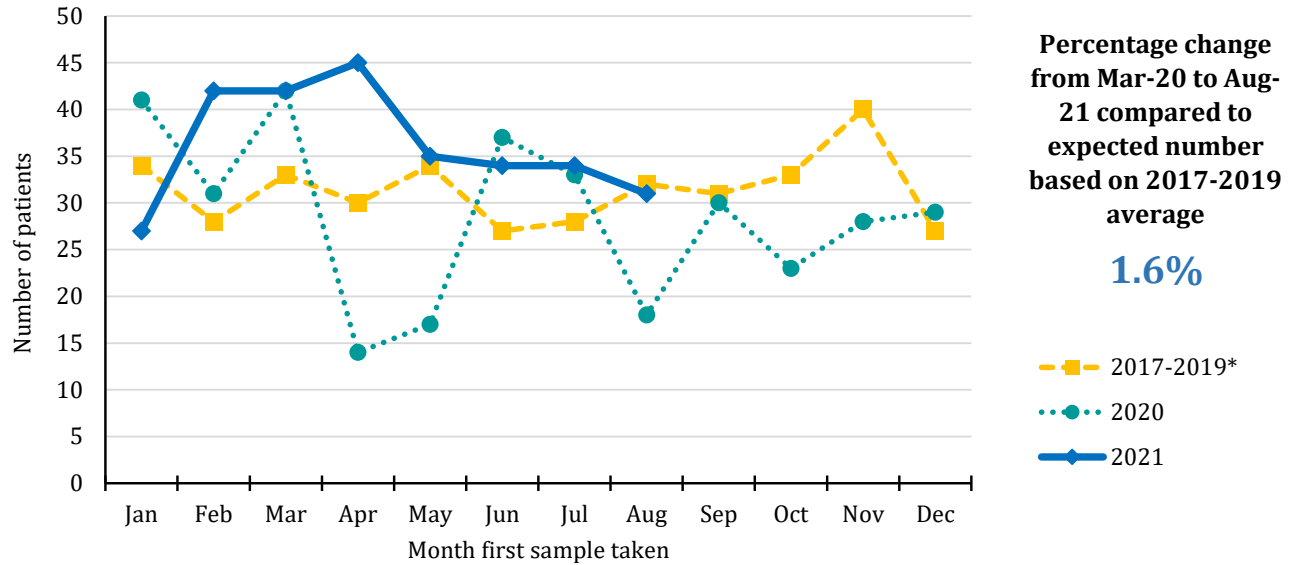
Year sample taken	Week sample taken**											
	12-Jun-21	19-Jun-21	26-Jun-21	03-Jul-21	10-Jul-21	17-Jul-21	24-Jul-21	31-Jul-21	07-Aug-21	14-Aug-21	21-Aug-21	28-Aug-21
2017-2019*	15	19	18	16	12	15	18	12	17	20	17	16
2020	16	14	12	19	21	13	16	9	13	15	26	17
2021	21	18	16	19	11	16	22	15	25	24	13	13

*Annual average

** The date of the end of the week in which the sample was taken in 2021. Data for previous years refers to the equivalent Sun-Sat week in those years.

Patients with pathology samples indicating bowel cancer: All persons, screening age (60-74)

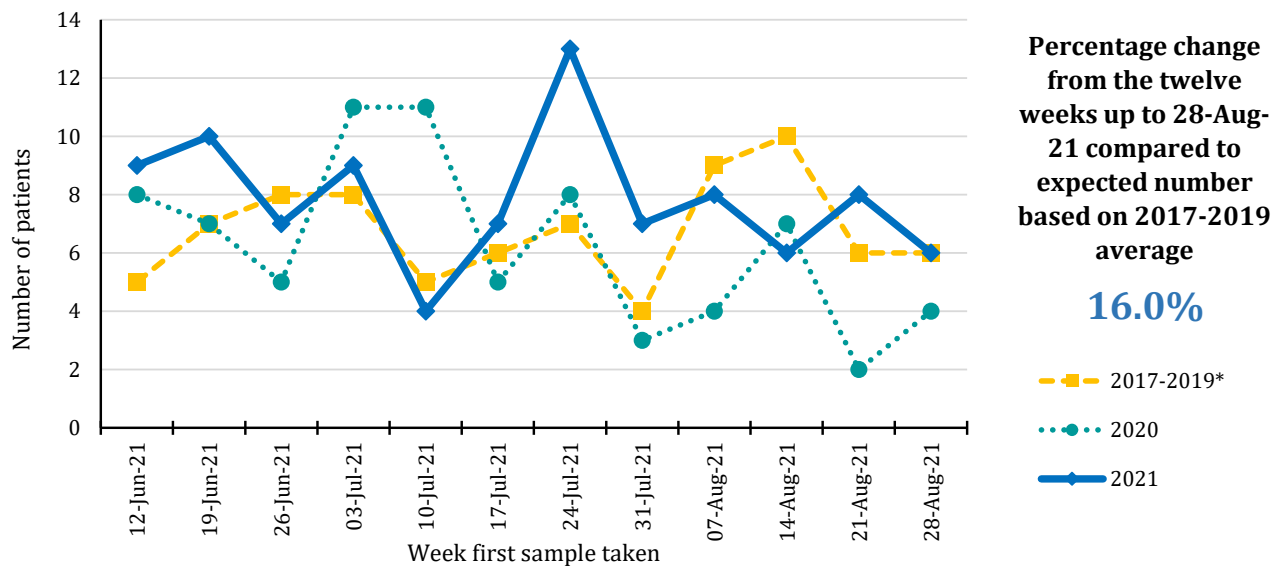
Trends in patients with pathology samples indicating cancer by month and year first sample taken



Year sample taken	Month sample taken											
	Jan	Feb	Mar	Apr	May	Jun	Jul	Aug	Sep	Oct	Nov	Dec
2017-2019*	34	28	33	30	34	27	28	32	31	33	40	27
2020	41	31	42	14	17	37	33	18	30	23	28	29
2021	27	42	42	45	35	34	34	31				

*Annual average

Trends in patients with pathology samples indicating cancer by week and year first sample taken



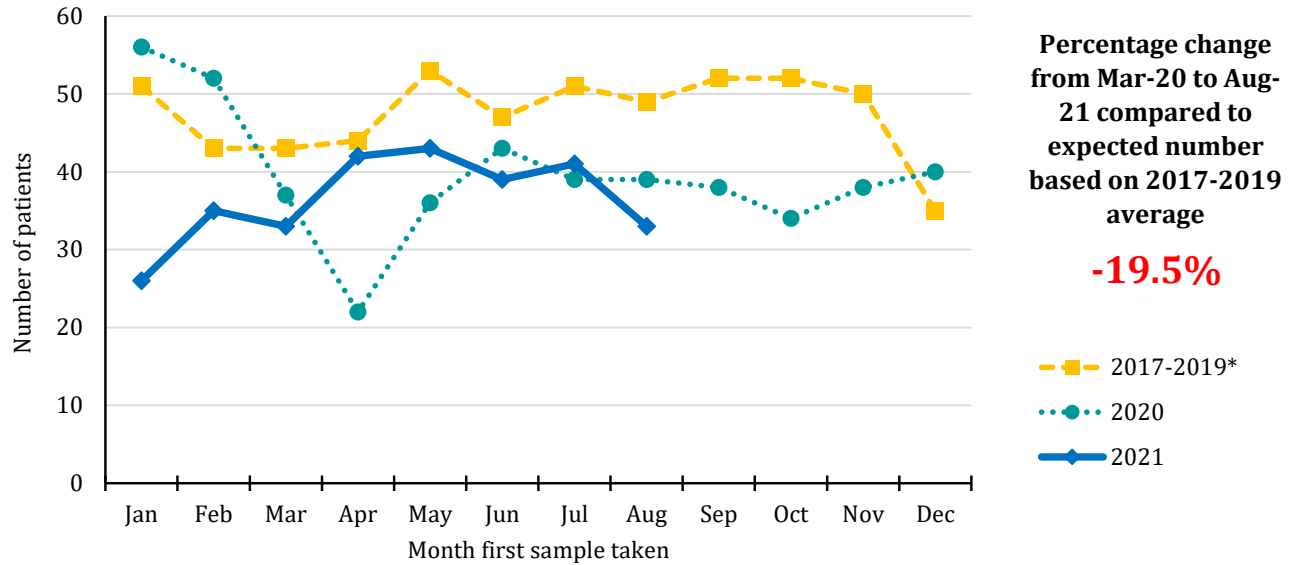
Year sample taken	Week sample taken**											
	12-Jun-21	19-Jun-21	26-Jun-21	03-Jul-21	10-Jul-21	17-Jul-21	24-Jul-21	31-Jul-21	07-Aug-21	14-Aug-21	21-Aug-21	28-Aug-21
2017-2019*	5	7	8	8	5	6	7	4	9	10	6	6
2020	8	7	5	11	11	5	8	3	4	7	2	4
2021	9	10	7	9	4	7	13	7	8	6	8	6

*Annual average

** The date of the end of the week in which the sample was taken in 2021. Data for previous years refers to the equivalent Sun-Sat week in those years.

Patients with pathology samples indicating lung cancer: All persons

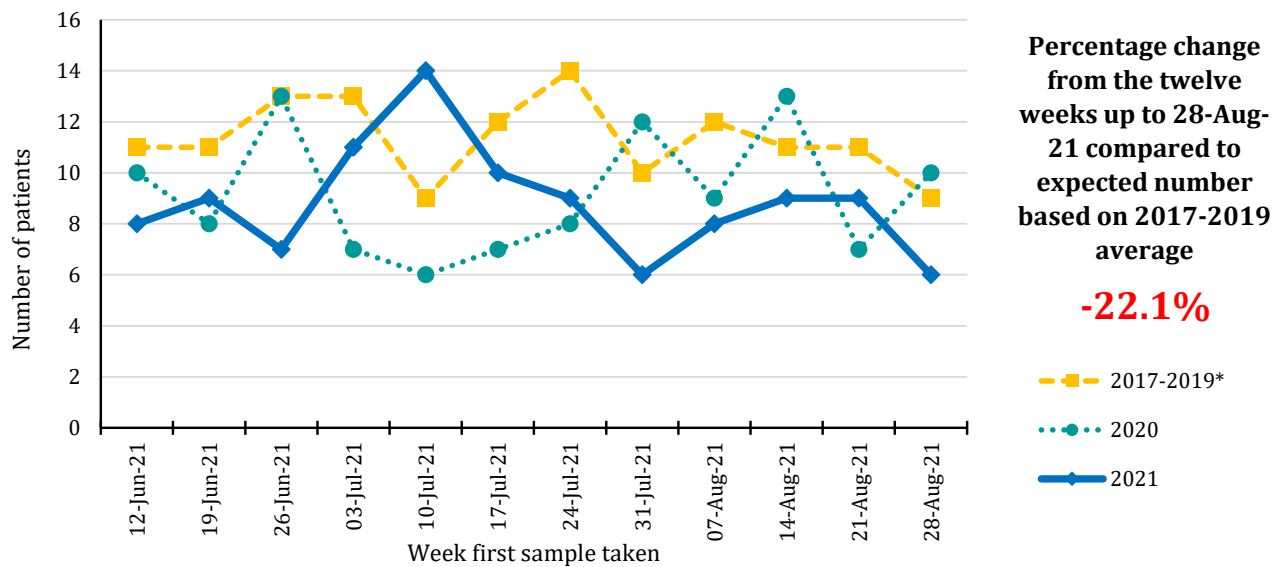
Trends in patients with pathology samples indicating cancer by month and year first sample taken



Year sample taken	Month sample taken											
	Jan	Feb	Mar	Apr	May	Jun	Jul	Aug	Sep	Oct	Nov	Dec
2017-2019*	51	43	43	44	53	47	51	49	52	52	50	35
2020	56	52	37	22	36	43	39	39	38	34	38	40
2021	26	35	33	42	43	39	41	33				

*Annual average

Trends in patients with pathology samples indicating cancer by week and year first sample taken



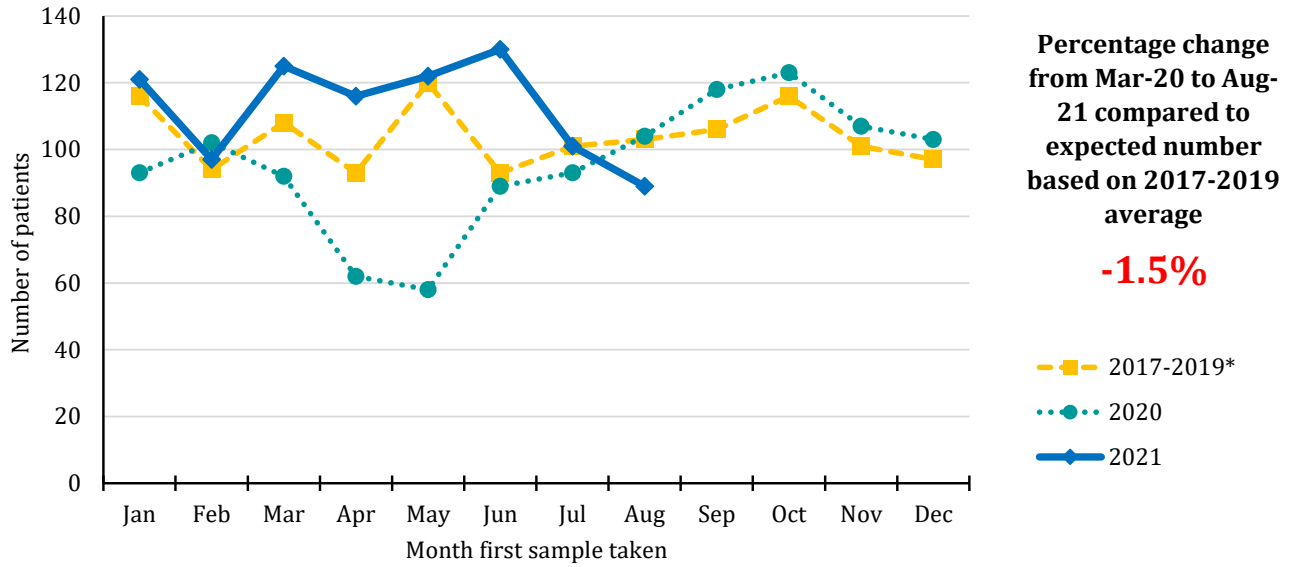
Year sample taken	Week sample taken**											
	12-Jun-21	19-Jun-21	26-Jun-21	03-Jul-21	10-Jul-21	17-Jul-21	24-Jul-21	31-Jul-21	07-Aug-21	14-Aug-21	21-Aug-21	28-Aug-21
2017-2019*	11	11	13	13	9	12	14	10	12	11	11	9
2020	10	8	13	7	6	7	8	12	9	13	7	10
2021	8	9	7	11	14	10	9	6	8	9	9	6

*Annual average

** The date of the end of the week in which the sample was taken in 2021. Data for previous years refers to the equivalent Sun-Sat week in those years.

Patients with pathology samples indicating breast cancer: Females

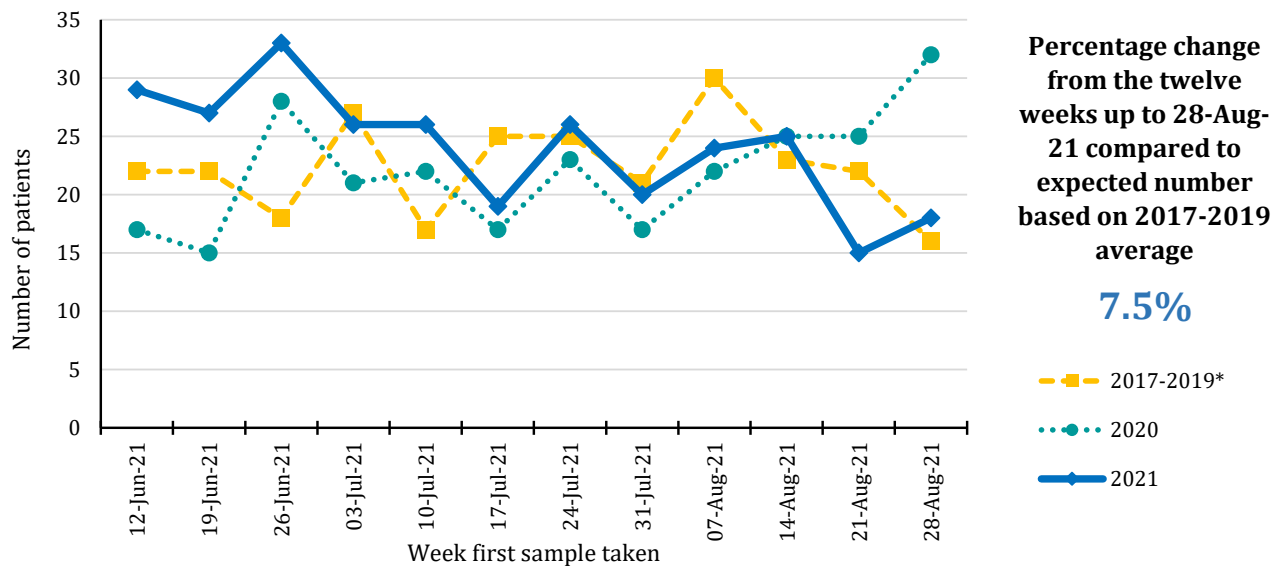
Trends in patients with pathology samples indicating cancer by month and year first sample taken



Year sample taken	Month sample taken											
	Jan	Feb	Mar	Apr	May	Jun	Jul	Aug	Sep	Oct	Nov	Dec
2017-2019*	116	94	108	93	120	93	101	103	106	116	101	97
2020	93	102	92	62	58	89	93	104	118	123	107	103
2021	121	97	125	116	122	130	101	89				

*Annual average

Trends in patients with pathology samples indicating cancer by week and year first sample taken



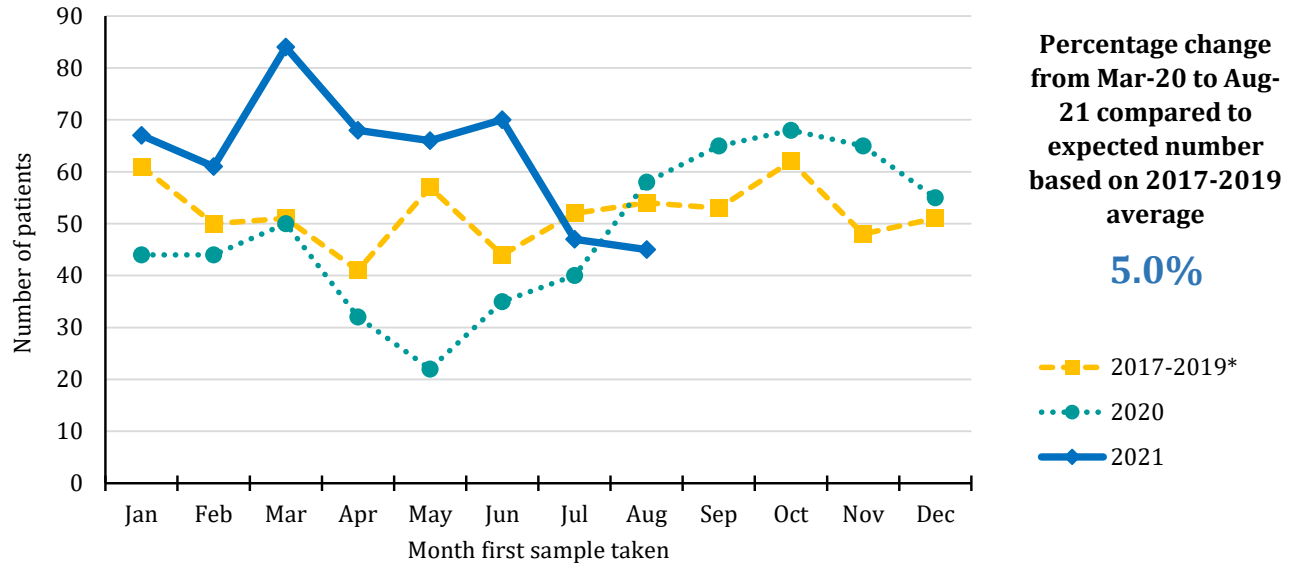
Year sample taken	Week sample taken**											
	12-Jun-21	19-Jun-21	26-Jun-21	03-Jul-21	10-Jul-21	17-Jul-21	24-Jul-21	31-Jul-21	07-Aug-21	14-Aug-21	21-Aug-21	28-Aug-21
2017-2019*	22	22	18	27	17	25	25	21	30	23	22	16
2020	17	15	28	21	22	17	23	17	22	25	25	32
2021	29	27	33	26	26	19	26	20	24	25	15	18

*Annual average

** The date of the end of the week in which the sample was taken in 2021. Data for previous years refers to the equivalent Sun-Sat week in those years.

Patients with pathology samples indicating breast cancer: Females, screening age (50-70)

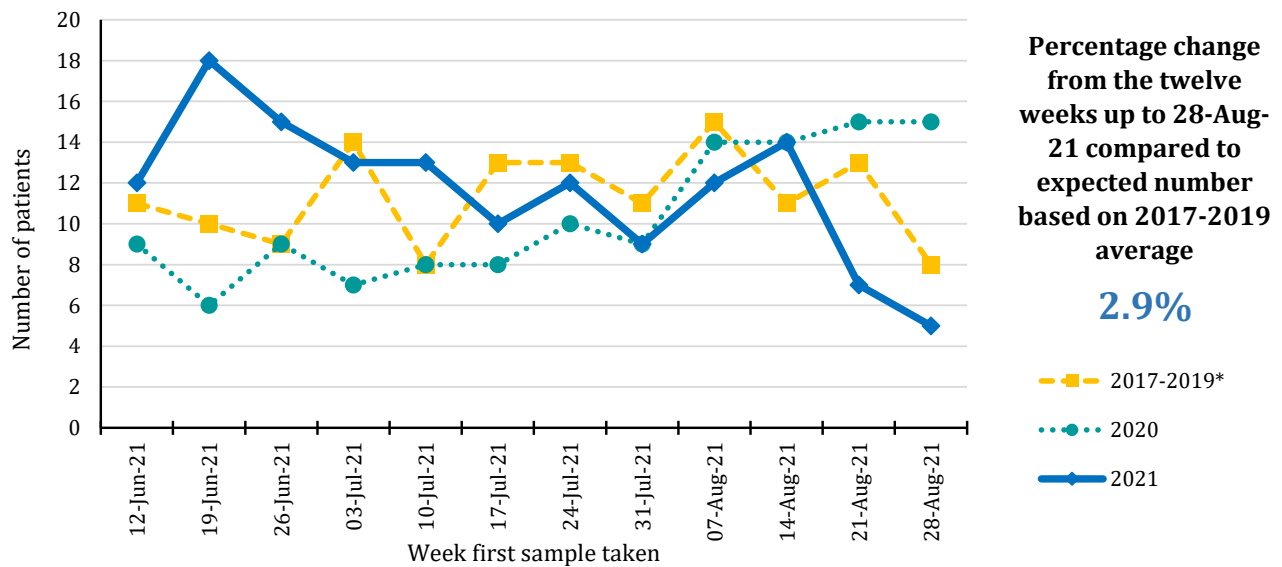
Trends in patients with pathology samples indicating cancer by month and year first sample taken



Year sample taken	Month sample taken											
	Jan	Feb	Mar	Apr	May	Jun	Jul	Aug	Sep	Oct	Nov	Dec
2017-2019*	61	50	51	41	57	44	52	54	53	62	48	51
2020	44	44	50	32	22	35	40	58	65	68	65	55
2021	67	61	84	68	66	70	47	45				

*Annual average

Trends in patients with pathology samples indicating cancer by week and year first sample taken



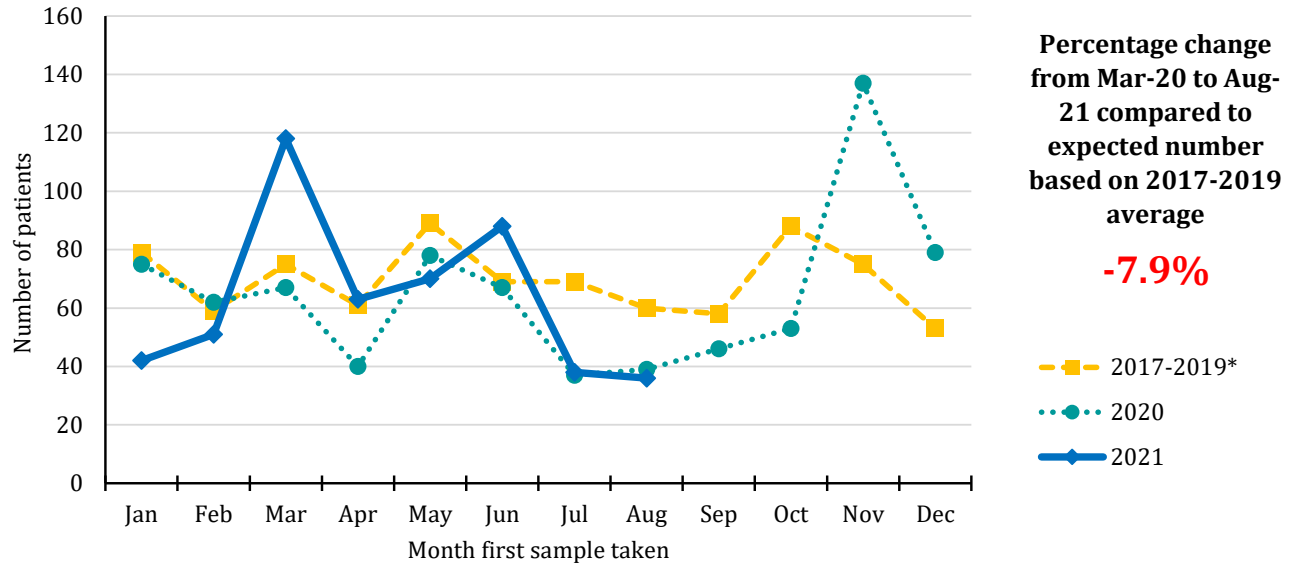
Year sample taken	Week sample taken**											
	12-Jun-21	19-Jun-21	26-Jun-21	03-Jul-21	10-Jul-21	17-Jul-21	24-Jul-21	31-Jul-21	07-Aug-21	14-Aug-21	21-Aug-21	28-Aug-21
2017-2019*	11	10	9	14	8	13	13	11	15	11	13	8
2020	9	6	9	7	8	8	10	9	14	14	15	15
2021	12	18	15	13	13	10	12	9	12	14	7	5

*Annual average

** The date of the end of the week in which the sample was taken in 2021. Data for previous years refers to the equivalent Sun-Sat week in those years.

Patients with pathology samples indicating prostate cancer: Males

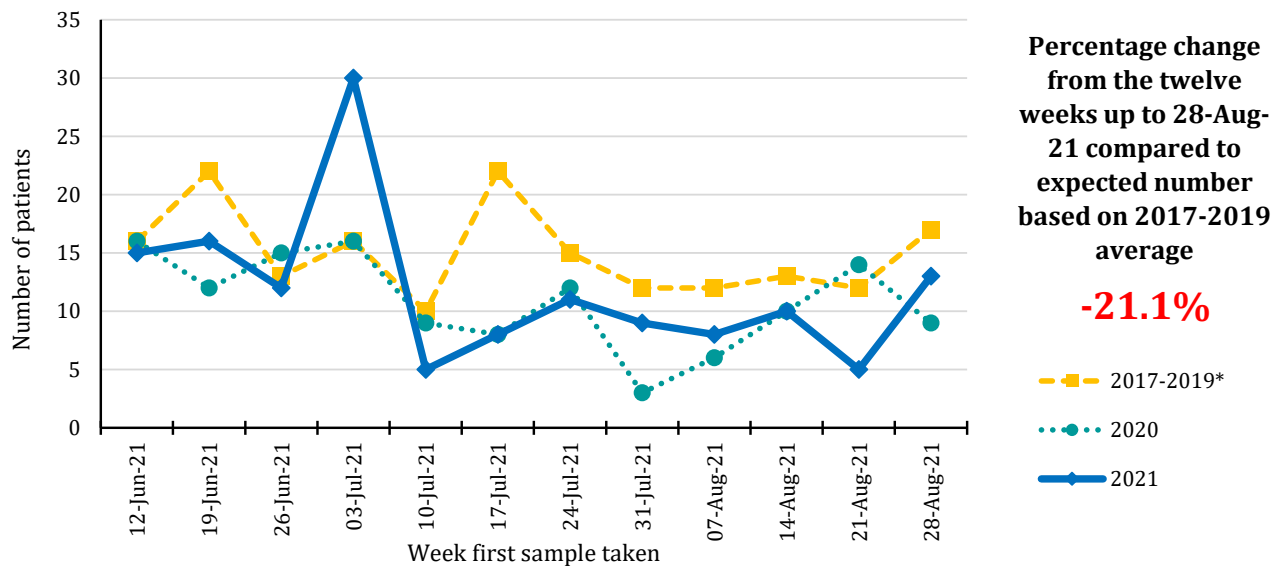
Trends in patients with pathology samples indicating cancer by month and year first sample taken



Year sample taken	Month sample taken											
	Jan	Feb	Mar	Apr	May	Jun	Jul	Aug	Sep	Oct	Nov	Dec
2017-2019*	79	59	75	61	89	69	69	60	58	88	75	53
2020	75	62	67	40	78	67	37	39	46	53	137	79
2021	42	51	118	63	70	88	38	36				

*Annual average

Trends in patients with pathology samples indicating cancer by week and year first sample taken



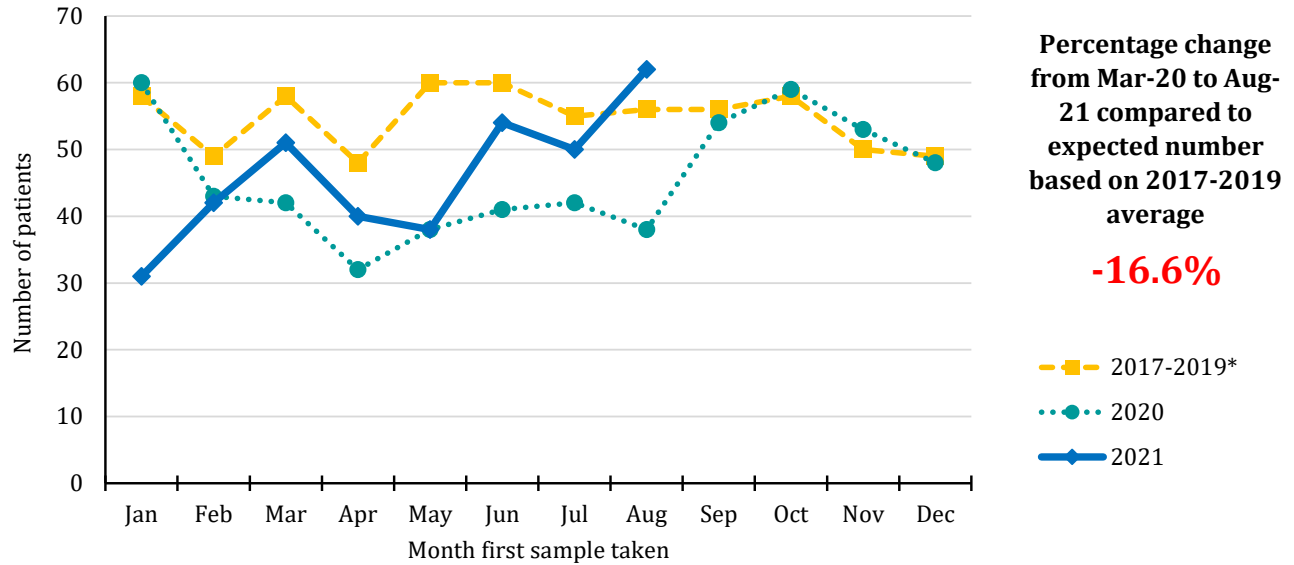
Year sample taken	Week sample taken**											
	12-Jun-21	19-Jun-21	26-Jun-21	03-Jul-21	10-Jul-21	17-Jul-21	24-Jul-21	31-Jul-21	07-Aug-21	14-Aug-21	21-Aug-21	28-Aug-21
2017-2019*	16	22	13	16	10	22	15	12	12	13	12	17
2020	16	12	15	16	9	8	12	3	6	10	14	9
2021	15	16	12	30	5	8	11	9	8	10	5	13

*Annual average

** The date of the end of the week in which the sample was taken in 2021. Data for previous years refers to the equivalent Sun-Sat week in those years.

Patients with pathology samples indicating gynaecological cancer: Females

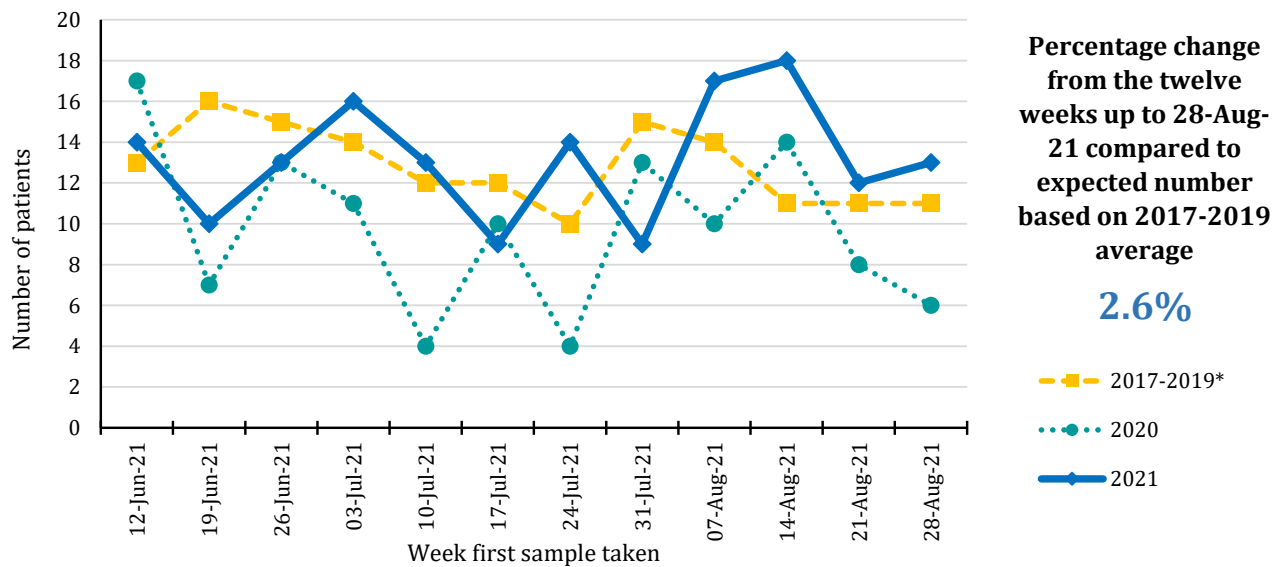
Trends in patients with pathology samples indicating cancer by month and year first sample taken



Year sample taken	Month sample taken											
	Jan	Feb	Mar	Apr	May	Jun	Jul	Aug	Sep	Oct	Nov	Dec
2017-2019*	58	49	58	48	60	60	55	56	56	58	50	49
2020	60	43	42	32	38	41	42	38	54	59	53	48
2021	31	42	51	40	38	54	50	62				

*Annual average

Trends in patients with pathology samples indicating cancer by week and year first sample taken



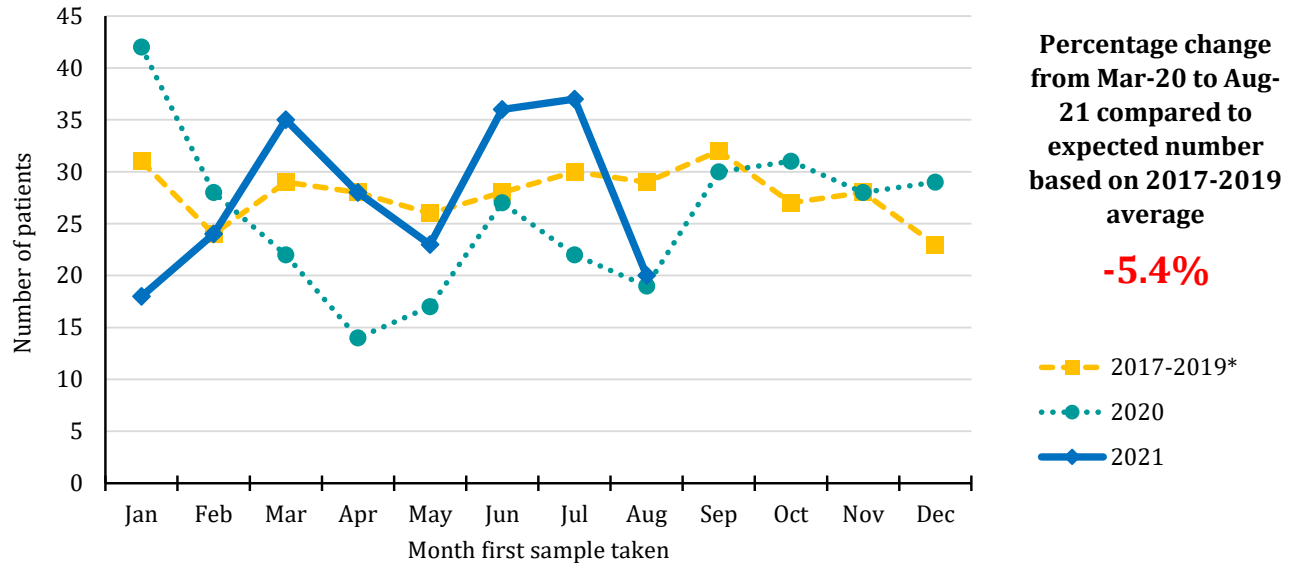
Year sample taken	Week sample taken**											
	12-Jun-21	19-Jun-21	26-Jun-21	03-Jul-21	10-Jul-21	17-Jul-21	24-Jul-21	31-Jul-21	07-Aug-21	14-Aug-21	21-Aug-21	28-Aug-21
2017-2019*	13	16	15	14	12	12	10	15	14	11	11	11
2020	17	7	13	11	4	10	4	13	10	14	8	6
2021	14	10	13	16	13	9	14	9	17	18	12	13

*Annual average

** The date of the end of the week in which the sample was taken in 2021. Data for previous years refers to the equivalent Sun-Sat week in those years.

Patients with pathology samples indicating upper gastrointestinal cancer: All persons

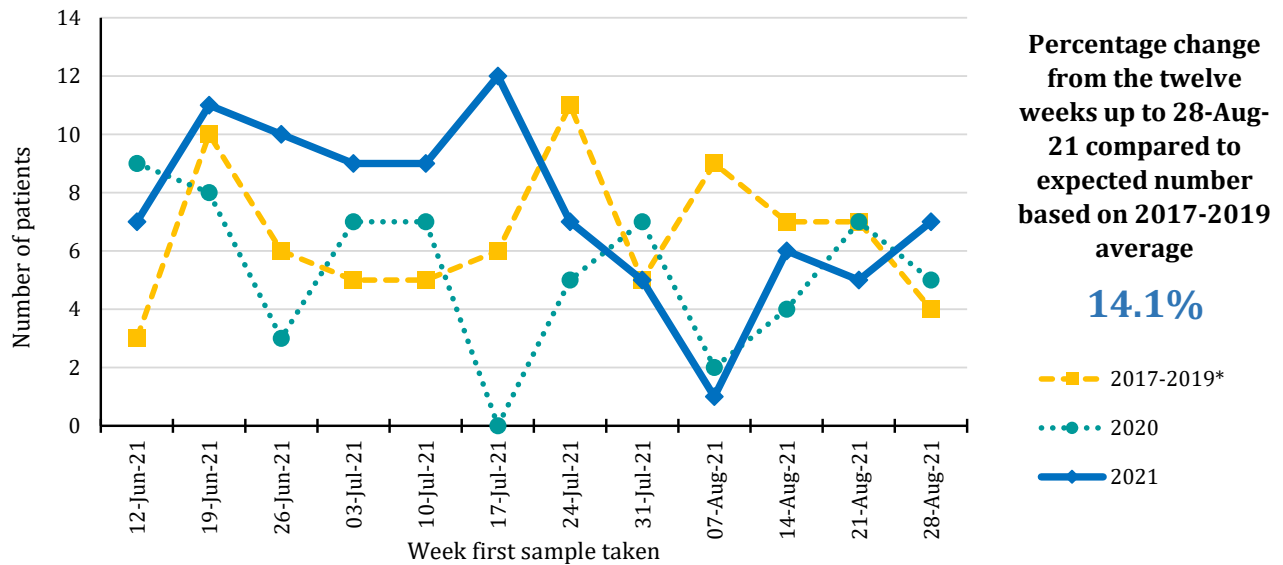
Trends in patients with pathology samples indicating cancer by month and year first sample taken



Year sample taken	Month sample taken											
	Jan	Feb	Mar	Apr	May	Jun	Jul	Aug	Sep	Oct	Nov	Dec
2017-2019*	31	24	29	28	26	28	30	29	32	27	28	23
2020	42	28	22	14	17	27	22	19	30	31	28	29
2021	18	24	35	28	23	36	37	20				

*Annual average

Trends in patients with pathology samples indicating cancer by week and year first sample taken



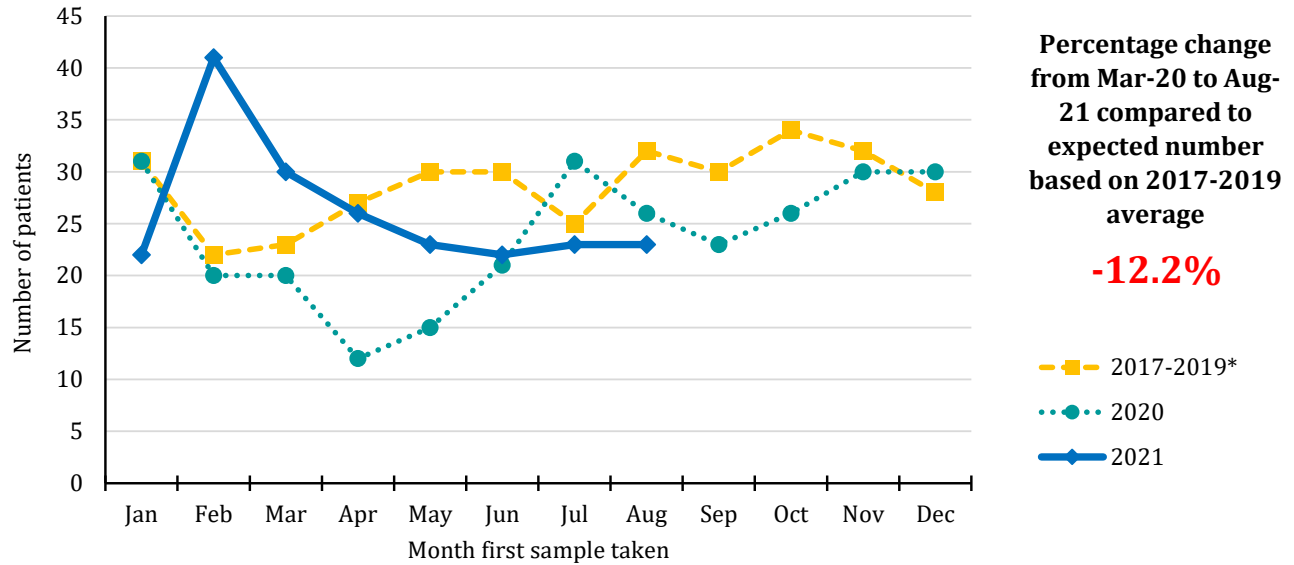
Year sample taken	Week sample taken**											
	12-Jun-21	19-Jun-21	26-Jun-21	03-Jul-21	10-Jul-21	17-Jul-21	24-Jul-21	31-Jul-21	07-Aug-21	14-Aug-21	21-Aug-21	28-Aug-21
2017-2019*	3	10	6	5	5	6	11	5	9	7	7	4
2020	9	8	3	7	7	0	5	7	2	4	7	5
2021	7	11	10	9	9	12	7	5	1	6	5	7

*Annual average

** The date of the end of the week in which the sample was taken in 2021. Data for previous years refers to the equivalent Sun-Sat week in those years.

Patients with pathology samples indicating head & neck cancer: All persons

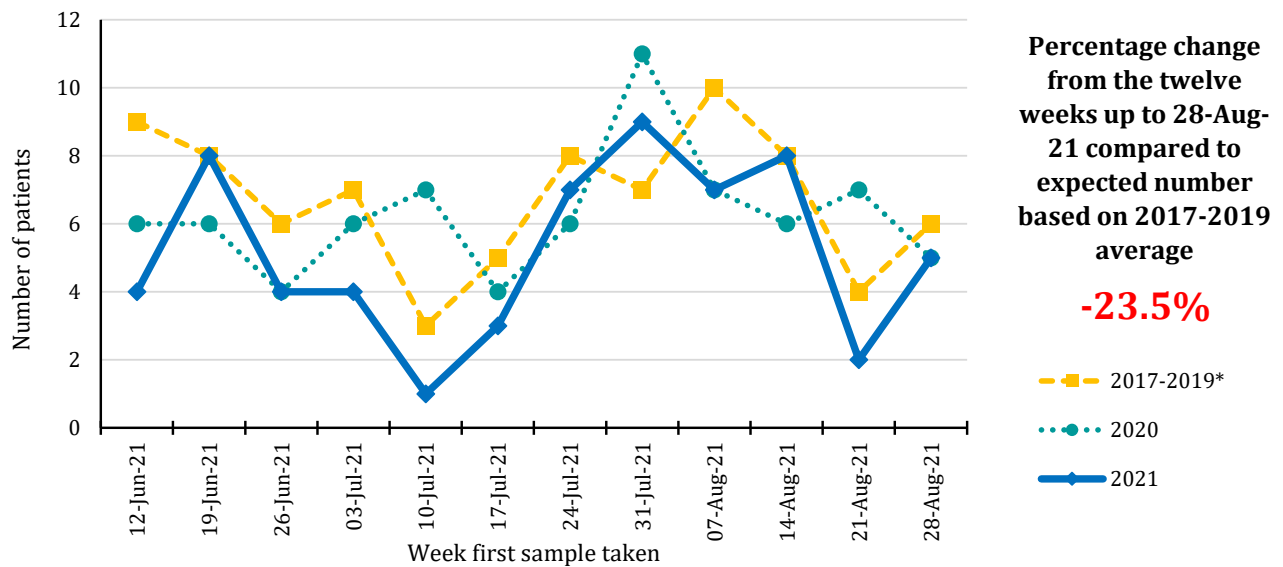
Trends in patients with pathology samples indicating cancer by month and year first sample taken



Year sample taken	Month sample taken											
	Jan	Feb	Mar	Apr	May	Jun	Jul	Aug	Sep	Oct	Nov	Dec
2017-2019*	31	22	23	27	30	30	25	32	30	34	32	28
2020	31	20	20	12	15	21	31	26	23	26	30	30
2021	22	41	30	26	23	22	23	23				

*Annual average

Trends in patients with pathology samples indicating cancer by week and year first sample taken



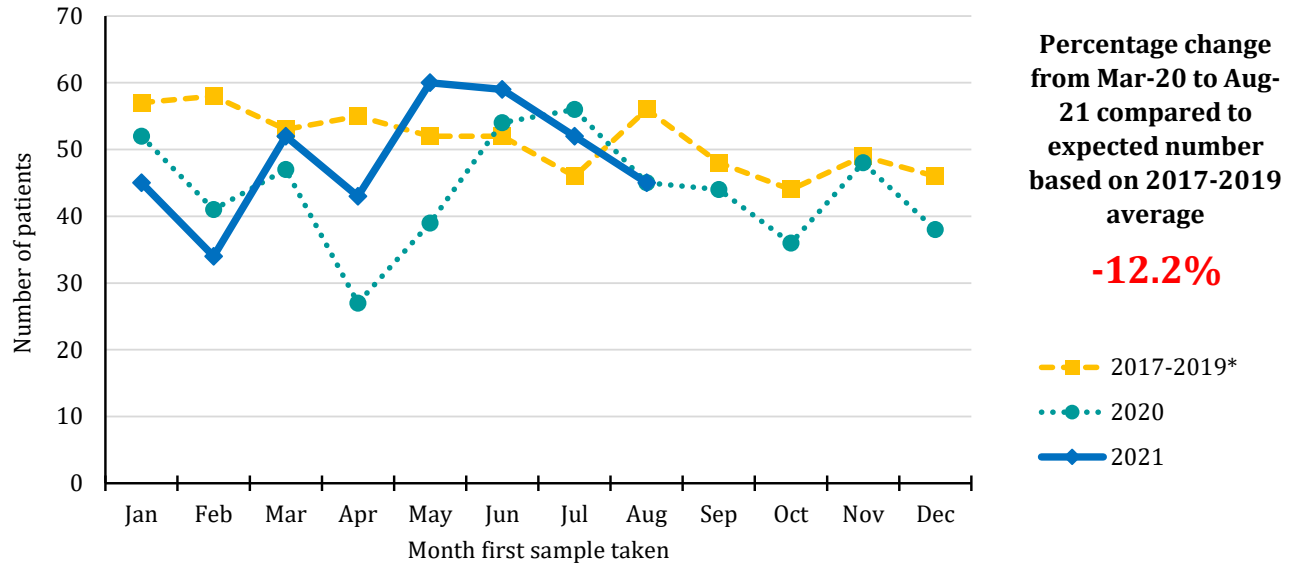
Year sample taken	Week sample taken**											
	12-Jun-21	19-Jun-21	26-Jun-21	03-Jul-21	10-Jul-21	17-Jul-21	24-Jul-21	31-Jul-21	07-Aug-21	14-Aug-21	21-Aug-21	28-Aug-21
2017-2019*	9	8	6	7	3	5	8	7	10	8	4	6
2020	6	6	4	6	7	4	6	11	7	6	7	5
2021	4	8	4	4	1	3	7	9	7	8	2	5

*Annual average

** The date of the end of the week in which the sample was taken in 2021. Data for previous years refers to the equivalent Sun-Sat week in those years.

Patients with pathology samples indicating urinary cancer: All persons

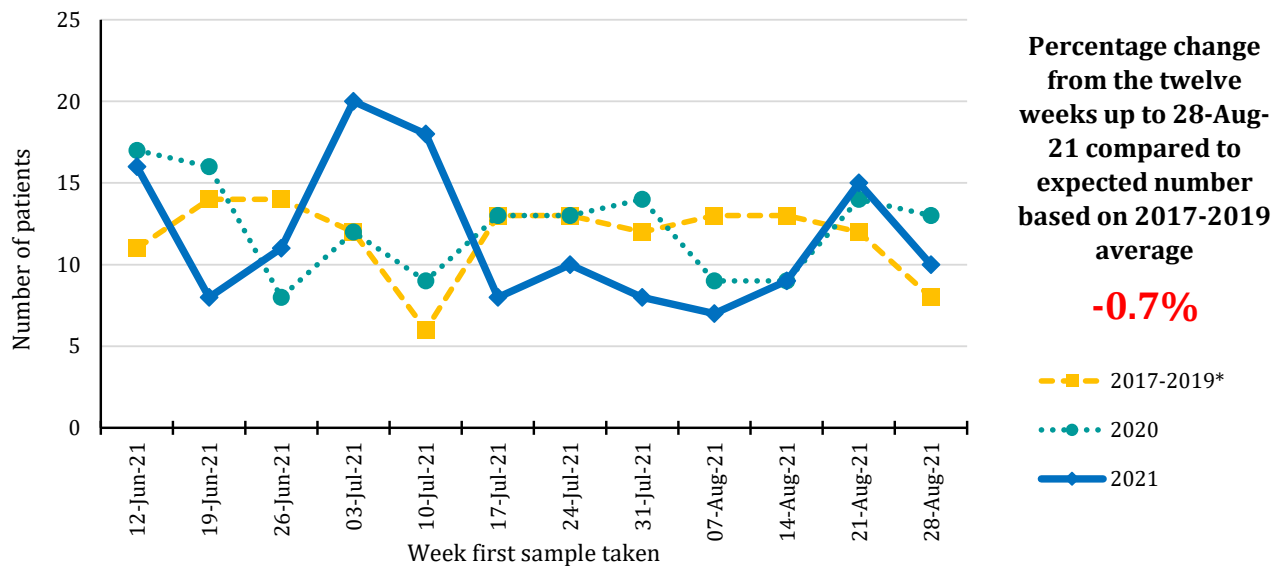
Trends in patients with pathology samples indicating cancer by month and year first sample taken



Year sample taken	Month sample taken											
	Jan	Feb	Mar	Apr	May	Jun	Jul	Aug	Sep	Oct	Nov	Dec
2017-2019*	57	58	53	55	52	52	46	56	48	44	49	46
2020	52	41	47	27	39	54	56	45	44	36	48	38
2021	45	34	52	43	60	59	52	45				

*Annual average

Trends in patients with pathology samples indicating cancer by week and year first sample taken



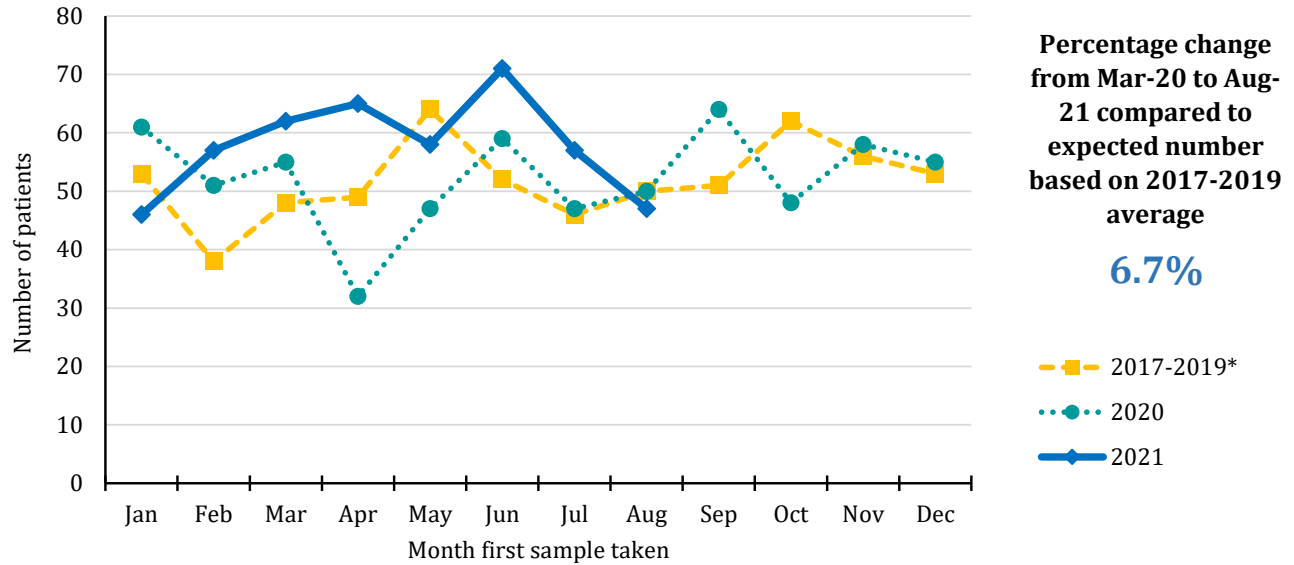
Year sample taken	Week sample taken**											
	12-Jun-21	19-Jun-21	26-Jun-21	03-Jul-21	10-Jul-21	17-Jul-21	24-Jul-21	31-Jul-21	07-Aug-21	14-Aug-21	21-Aug-21	28-Aug-21
2017-2019*	11	14	14	12	6	13	13	12	13	13	12	8
2020	17	16	8	12	9	13	13	14	9	9	14	13
2021	16	8	11	20	18	8	10	8	7	9	15	10

*Annual average

** The date of the end of the week in which the sample was taken in 2021. Data for previous years refers to the equivalent Sun-Sat week in those years.

Patients with pathology samples indicating haematological cancer: All persons

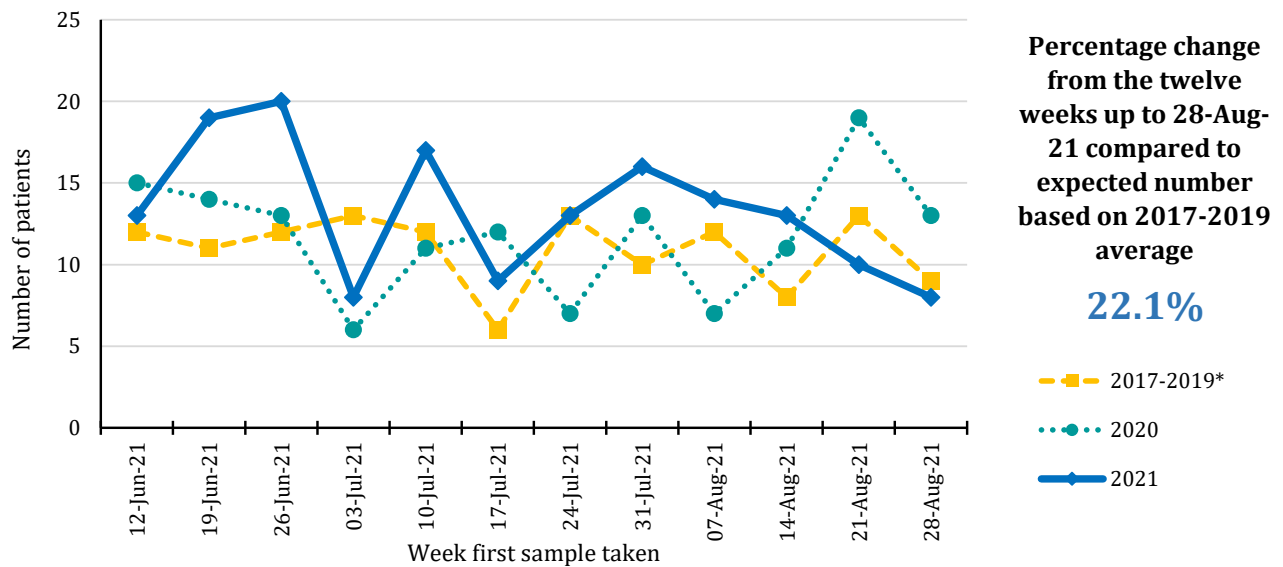
Trends in patients with pathology samples indicating cancer by month and year first sample taken



Year sample taken	Month sample taken											
	Jan	Feb	Mar	Apr	May	Jun	Jul	Aug	Sep	Oct	Nov	Dec
2017-2019*	53	38	48	49	64	52	46	50	51	62	56	53
2020	61	51	55	32	47	59	47	50	64	48	58	55
2021	46	57	62	65	58	71	57	47				

*Annual average

Trends in patients with pathology samples indicating cancer by week and year first sample taken



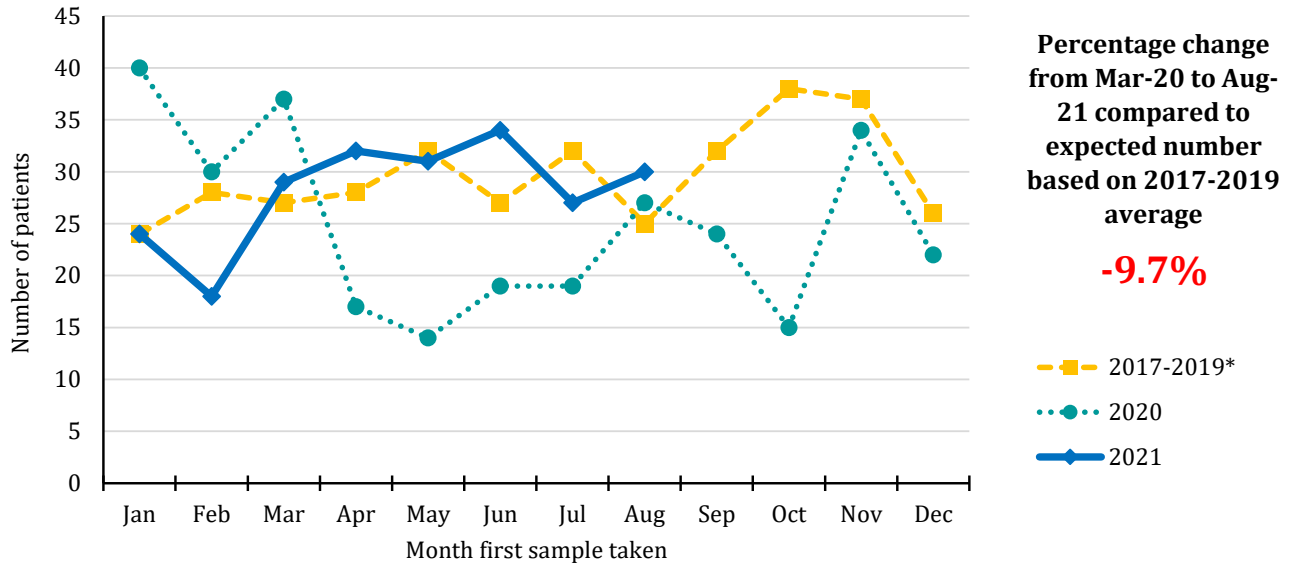
Year sample taken	Week sample taken**											
	12-Jun-21	19-Jun-21	26-Jun-21	03-Jul-21	10-Jul-21	17-Jul-21	24-Jul-21	31-Jul-21	07-Aug-21	14-Aug-21	21-Aug-21	28-Aug-21
2017-2019*	12	11	12	13	12	6	13	10	12	8	13	9
2020	15	14	13	6	11	12	7	13	7	11	19	13
2021	13	19	20	8	17	9	13	16	14	13	10	8

*Annual average

** The date of the end of the week in which the sample was taken in 2021. Data for previous years refers to the equivalent Sun-Sat week in those years.

Patients with pathology samples indicating malignant melanoma: All persons

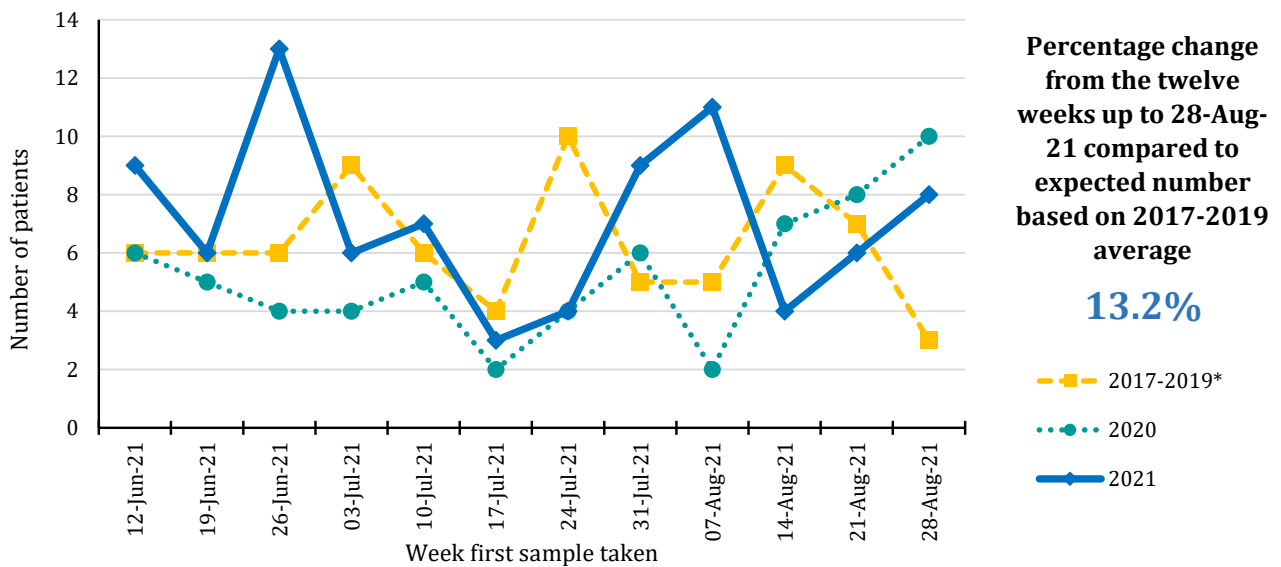
Trends in patients with pathology samples indicating cancer by month and year first sample taken



Year sample taken	Month sample taken											
	Jan	Feb	Mar	Apr	May	Jun	Jul	Aug	Sep	Oct	Nov	Dec
2017-2019*	24	28	27	28	32	27	32	25	32	38	37	26
2020	40	30	37	17	14	19	19	27	24	15	34	22
2021	24	18	29	32	31	34	27	30				

*Annual average

Trends in patients with pathology samples indicating cancer by week and year first sample taken



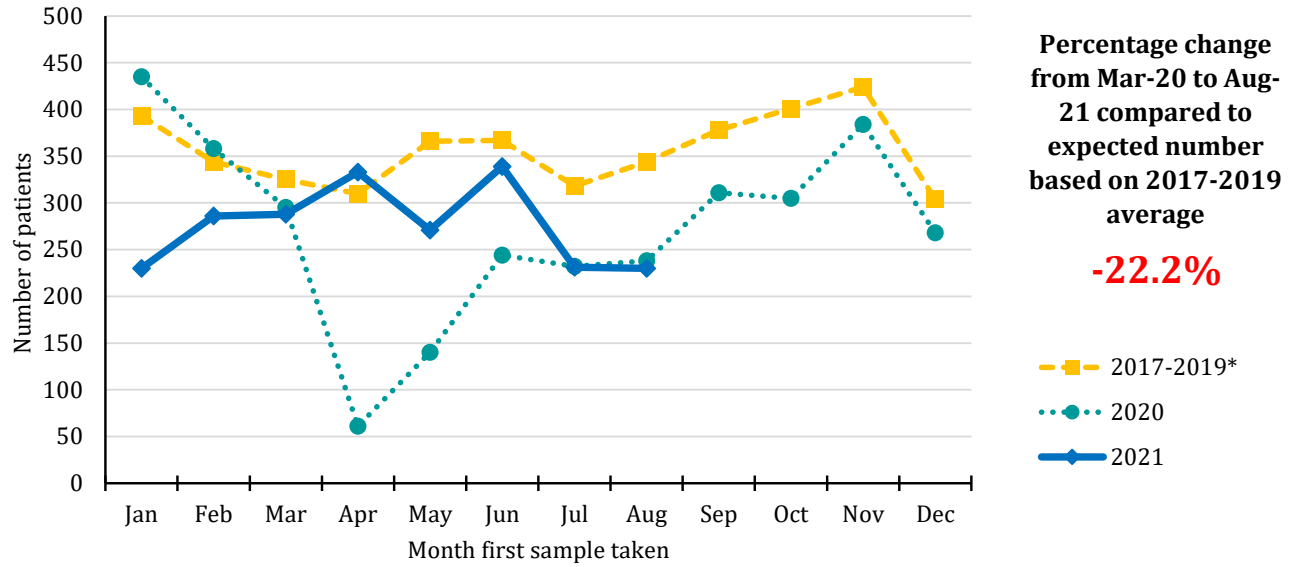
Year sample taken	Week sample taken**											
	12-Jun-21	19-Jun-21	26-Jun-21	03-Jul-21	10-Jul-21	17-Jul-21	24-Jul-21	31-Jul-21	07-Aug-21	14-Aug-21	21-Aug-21	28-Aug-21
2017-2019*	6	6	6	9	6	4	10	5	5	9	7	3
2020	6	5	4	4	5	2	4	6	2	7	8	10
2021	9	6	13	6	7	3	4	9	11	4	6	8

*Annual average

** The date of the end of the week in which the sample was taken in 2021. Data for previous years refers to the equivalent Sun-Sat week in those years.

Patients with pathology samples indicating non-melanoma skin cancer: All persons

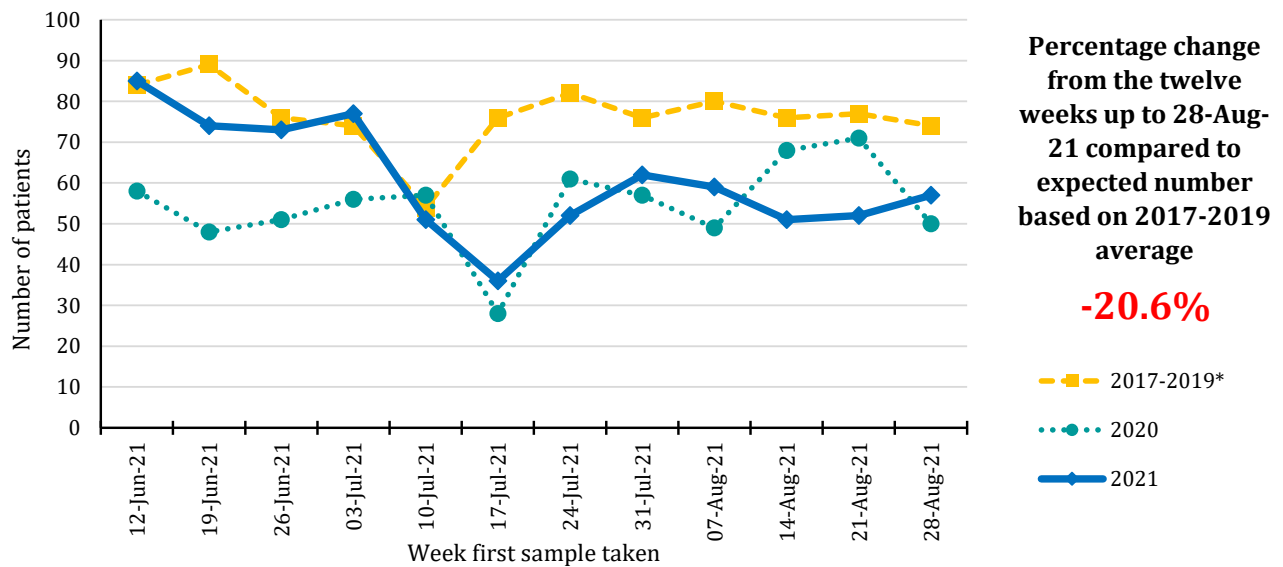
Trends in patients with pathology samples indicating cancer by month and year first sample taken



Year sample taken	Month sample taken											
	Jan	Feb	Mar	Apr	May	Jun	Jul	Aug	Sep	Oct	Nov	Dec
2017-2019*	393	344	325	310	366	367	318	344	378	401	424	304
2020	435	358	295	61	140	244	232	238	311	305	384	268
2021	230	286	288	333	271	339	231	230	311	305	384	268

*Annual average

Trends in patients with pathology samples indicating cancer by week and year first sample taken



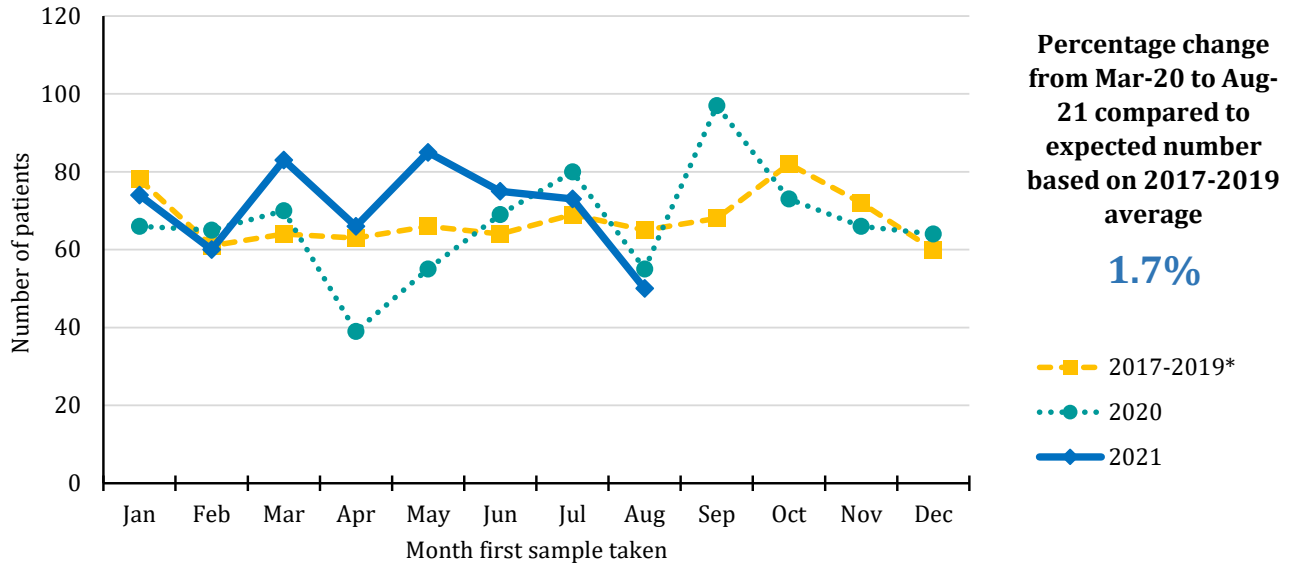
Year sample taken	Week sample taken**											
	12-Jun-21	19-Jun-21	26-Jun-21	03-Jul-21	10-Jul-21	17-Jul-21	24-Jul-21	31-Jul-21	07-Aug-21	14-Aug-21	21-Aug-21	28-Aug-21
2017-2019*	84	89	76	74	54	76	82	76	80	76	77	74
2020	58	48	51	56	57	28	61	57	49	68	71	50
2021	85	74	73	77	51	36	52	62	59	51	52	57

*Annual average

** The date of the end of the week in which the sample was taken in 2021. Data for previous years refers to the equivalent Sun-Sat week in those years.

Patients with pathology samples indicating other cancer: All persons

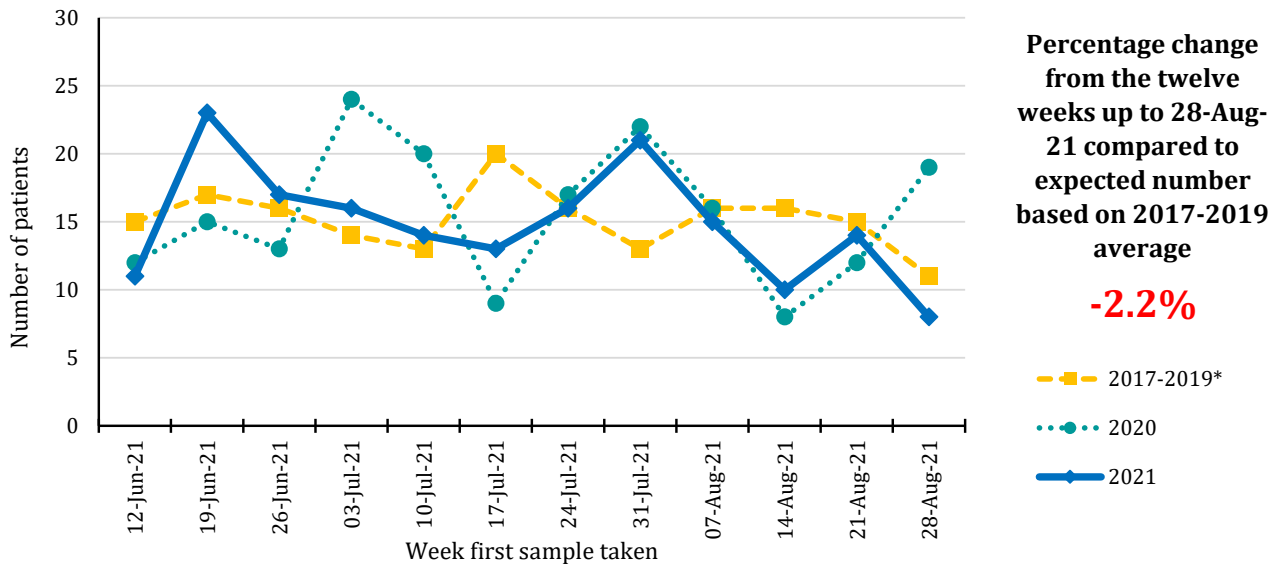
Trends in patients with pathology samples indicating cancer by month and year first sample taken



Year sample taken	Month sample taken											
	Jan	Feb	Mar	Apr	May	Jun	Jul	Aug	Sep	Oct	Nov	Dec
2017-2019*	78	61	64	63	66	64	69	65	68	82	72	60
2020	66	65	70	39	55	69	80	55	97	73	66	64
2021	74	60	83	66	85	75	73	50				

*Annual average

Trends in patients with pathology samples indicating cancer by week and year first sample taken



Year sample taken	Week sample taken**											
	12-Jun-21	19-Jun-21	26-Jun-21	03-Jul-21	10-Jul-21	17-Jul-21	24-Jul-21	31-Jul-21	07-Aug-21	14-Aug-21	21-Aug-21	28-Aug-21
2017-2019*	15	17	16	14	13	20	16	13	16	16	15	11
2020	12	15	13	24	20	9	17	22	16	8	12	19
2021	11	23	17	16	14	13	16	21	15	10	14	8

*Annual average

** The date of the end of the week in which the sample was taken in 2021. Data for previous years refers to the equivalent Sun-Sat week in those years.

Notes:

1. NMSC: Non-melanoma skin cancer

2. Data is sourced from three of the four NHS pathology laboratories in Northern Ireland (Antrim, Belfast, Craigavon), which is provided to the NI Cancer Registry on a monthly basis. It does not include information on pathology samples processed by private laboratories.

3. Figures represent the number of patients with pathology samples that indicated a malignant tumour and had this result coded and recorded by the end of Aug-21. Due to potential reporting delays, pathology data from the month following Aug-21 are used in compiling the presented results.

4. Assignment of week number is based upon a Sunday to Saturday week. The week ending label used in graphs and tables is based upon the date of the end of the week (a Saturday) in 2020/2021. This is compared with the equivalent Sunday-Saturday week in 2017-2019, although the actual date ending this week in 2017-2019 will differ.

5. Individual patients with cancer may have more than one pathology sample. A diagnosis of cancer may be a result of more than one procedure indicating cancer, for example a breast cancer diagnosis may be based upon a positive biopsy of the breast and then a separate positive dissection of a lymph node. Patients are thus only included once per cancer type unless they have had pathology samples separated by more than two years, thus a patient with samples in March and April of 2019 will be counted once (in the March 2019 count), while a patient with samples in April 2017 and May 2020 will be counted in both the April 2017 and May 2020 counts.

6. Cancer types are defined as follows:

Bowel cancer: Includes colon, rectum and rectosigmoid junction (ICD10 codes: C18-C20)

Lung cancer: Includes lung and trachea (ICD10 codes: C33-C34)

Breast cancer: Includes female breast only (ICD10 codes: C50)

Prostate cancer: (ICD10 codes: C61)

Gynaecological cancer: Includes uterus, ovary, cervix, vulva, vagina, placenta and other female genital (ICD10 codes: C51-C58)

Upper GI cancer: Includes oesophagus and stomach (ICD10 codes: C15, C16).

Head and neck cancer: Includes lip, tongue, mouth, parotid & salivary glands, tonsil, oropharynx, nasopharynx, pyriform sinus, hypopharynx, nasal cavity, middle ear, sinuses and larynx (ICD10 codes: C00-C14, C30-C32)

Urinary cancer: Includes kidney, renal pelvis, ureter, bladder and other urinary (ICD10 codes: C64-C68).

Haematological cancer: Includes lymphoma (all types), leukaemia (all types), myeloma, malignant immunoproliferative disease and other lymphoid and haematopoietic (ICD10 codes: C81-C96)

Melanoma: (ICD10 code: C43)

Non-melanoma skin cancer (NMSC): (ICD10 code: C44)

Other cancer: Includes cancers of small intestine, anus, liver, gallbladder, thymus, bone, mesothelioma, soft tissue, penis, testis, eye, brain, endocrine system and thyroid (ICD10 codes: C16, C21-C26, C37-C41, C45-C49, C60, C62, C63, C69-C75). Excludes cancer of unknown primary."

Acknowledgements

The Northern Ireland Cancer Registry (NICR) is funded by the Public Health Agency. NICR uses data provided by patients and collected by the health service as part of their care and support.

Further Information

Further data is available at: www.qub.ac.uk/nicr

Phone: +44 (0)28 9097 6028

e-mail: nicr@qub.ac.uk



