

Number of cases and incidence rates by sex and year of diagnosis
All cancers combined (C00-C97)

Male				
Year of diagnosis	Number of cases	Crude rate per 100,000 males	European age standardised incidence rate per 100,000 males (95% CI)	World age standardised incidence rate per 100,000 males (95% CI)
1993	4,117	515.8	569.0 (551.5,586.4)	383.7 (371.7,395.7)
1994	4,168	519.7	570.3 (552.9,587.6)	385.0 (373.0,397.0)
1995	4,083	507.8	552.4 (535.4,569.4)	371.2 (359.5,382.9)
1996	4,233	522.4	561.9 (545.0,578.8)	379.6 (367.8,391.4)
1997	4,148	508.6	544.9 (528.3,561.4)	365.1 (353.7,376.6)
1998	4,236	517.4	548.2 (531.7,564.7)	366.7 (355.4,378.1)
1999	4,197	512.8	536.1 (519.9,552.3)	360.0 (348.7,371.2)
2000	4,286	522.4	541.5 (525.3,557.6)	365.6 (354.3,376.9)
2001	4,408	534.7	546.9 (530.8,563.0)	368.4 (357.2,379.6)
2002	4,601	555.1	559.8 (543.7,576.0)	377.9 (366.6,389.2)
2003	4,763	571.9	568.5 (552.4,584.7)	383.4 (372.2,394.7)
2004	4,761	569.2	556.9 (541.1,572.7)	374.8 (363.8,385.8)
2005	4,883	578.4	558.0 (542.4,573.6)	377.8 (366.8,388.8)
2006	5,215	611.1	585.1 (569.2,600.9)	394.4 (383.3,405.4)
2007	5,494	637.4	605.3 (589.4,621.3)	411.8 (400.6,423.1)
2008	5,794	665.3	622.6 (606.6,638.6)	419.9 (408.7,431.0)

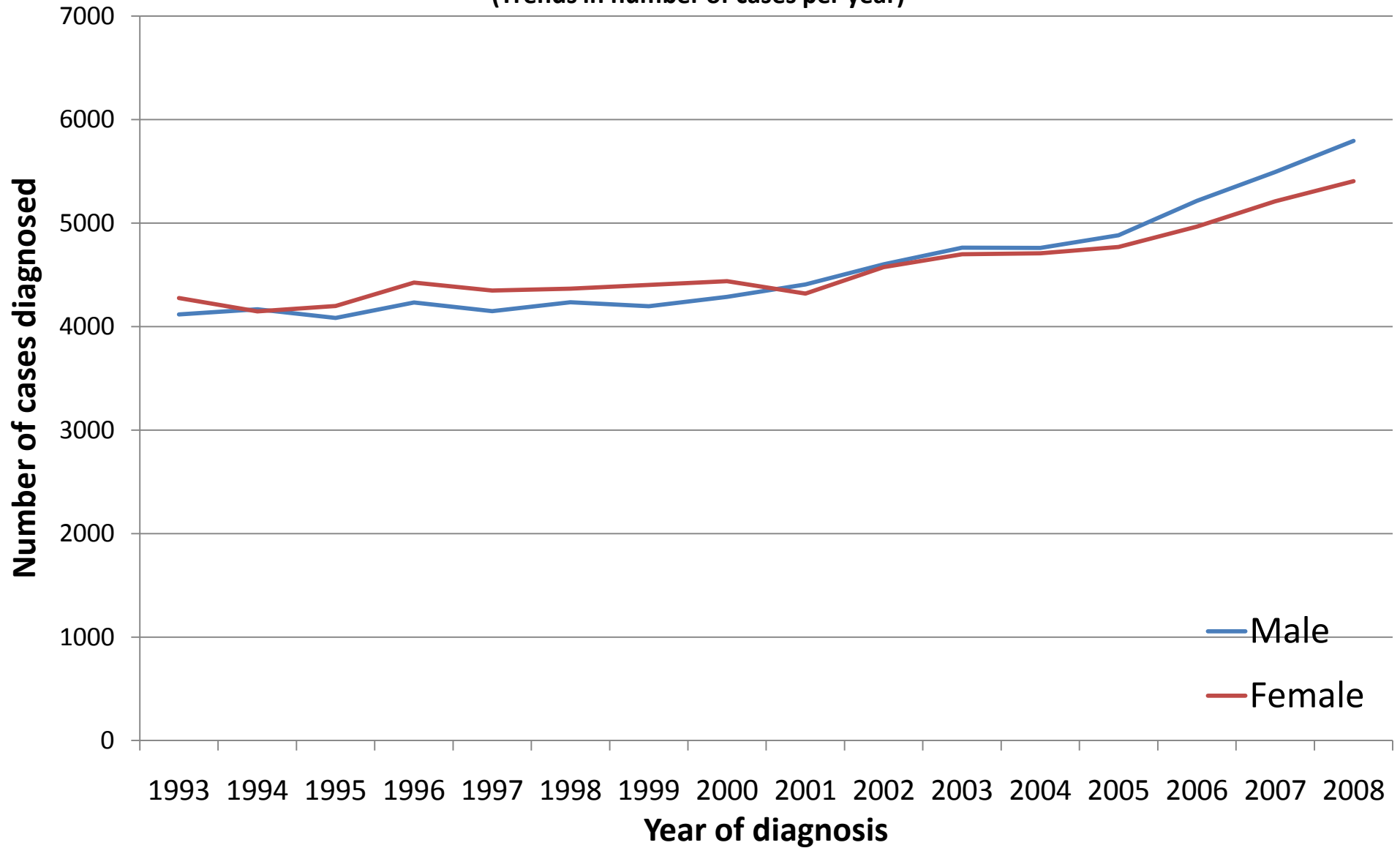
Female				
Year of diagnosis	Number of cases	Crude rate per 100,000 females	European age standardised incidence rate per 100,000 females (95% CI)	World age standardised incidence rate per 100,000 females (95% CI)
1993	4,275	510.5	451.3 (437.1,465.5)	319.2 (308.6,329.8)
1994	4,147	492.7	437.7 (423.7,451.7)	309.5 (299.1,320.0)
1995	4,199	496.9	438.8 (424.8,452.7)	308.2 (297.9,318.5)
1996	4,424	519.6	452.4 (438.4,466.3)	317.5 (307.1,327.9)
1997	4,349	508.2	438.8 (425.1,452.4)	309.1 (298.9,319.3)
1998	4,366	508.2	442.1 (428.4,455.8)	312.8 (302.5,323.0)
1999	4,402	511.6	441.6 (428.0,455.2)	309.9 (299.8,320.0)
2000	4,438	514.6	446.0 (432.3,459.7)	314.3 (304.1,324.4)
2001	4,319	499.4	424.2 (411.0,437.4)	298.3 (288.5,308.1)
2002	4,575	527.2	440.0 (426.7,453.3)	308.9 (299.0,318.8)
2003	4,699	540.2	450.9 (437.4,464.3)	318.1 (308.0,328.2)
2004	4,709	538.9	445.5 (432.2,458.8)	315.5 (305.6,325.5)
2005	4,769	541.8	444.4 (431.3,457.5)	313.5 (303.8,323.3)
2006	4,967	559.2	454.7 (441.5,467.8)	320.9 (311.1,330.8)
2007	5,211	580.8	476.2 (462.7,489.6)	336.8 (326.7,346.8)
2008	5,406	597.9	486.6 (473.1,500.1)	345.3 (335.2,355.4)

All persons				
Year of diagnosis	Number of cases	Crude rate per 100,000 persons	European age standardised incidence rate per 100,000 persons (95% CI)	World age standardised incidence rate per 100,000 persons (95% CI)
1993	8,392	513.1	492.9 (482.2,503.7)	341.9 (334.1,349.7)
1994	8,315	505.9	486.0 (475.3,496.6)	337.2 (329.4,344.9)
1995	8,282	502.2	478.9 (468.4,489.4)	330.6 (323.0,338.2)
1996	8,657	521.0	492.4 (481.8,503.0)	340.3 (332.7,348.0)
1997	8,497	508.4	476.6 (466.2,486.9)	328.8 (321.3,336.2)
1998	8,602	512.7	479.6 (469.2,489.9)	331.3 (323.8,338.8)
1999	8,599	512.1	474.4 (464.2,484.6)	327.0 (319.6,334.4)
2000	8,724	518.4	480.6 (470.3,490.8)	332.8 (325.3,340.2)
2001	8,727	516.6	471.1 (461.1,481.2)	325.4 (318.1,332.7)
2002	9,176	540.8	486.6 (476.5,496.7)	336.0 (328.6,343.4)
2003	9,462	555.7	496.5 (486.3,506.7)	343.5 (336.0,350.9)
2004	9,470	553.7	488.7 (478.7,498.7)	338.4 (331.1,345.7)
2005	9,652	559.7	490.0 (480.1,499.9)	339.6 (332.4,346.9)
2006	10,182	584.6	507.9 (497.8,517.9)	351.1 (343.8,358.4)
2007	10,705	608.5	529.3 (519.1,539.5)	368.1 (360.6,375.5)
2008	11,200	631.0	541.4 (531.2,551.6)	375.5 (368.1,382.9)

NOTES:

CI: Confidence interval

All cancers combined (C00-C97)
(Trends in number of cases per year)



All cancers combined (C00-C97)
(Trends in age-standardised incidence rates)

