

Number of cases and incidence rates by sex and year of diagnosis
All cancers ex NMSC (C00-C97 ex C44)

Male

Year of diagnosis	Number of cases	Percentage of all cancers ex.		Crude rate per 100,000 males	European age standardised incidence rate per 100,000 males (95% CI)	World age standardised incidence rate per 100,000 males (95% CI)
		NMSC				
1993	3,122	100.0		391.1	430.0 (414.8,445.2)	292.0 (281.5,302.6)
1994	3,110	100.0		387.8	424.5 (409.5,439.4)	288.6 (278.2,299.1)
1995	3,060	100.0		380.6	412.2 (397.5,426.9)	278.1 (267.9,288.2)
1996	3,158	100.0		389.7	418.0 (403.3,432.6)	283.7 (273.5,294.0)
1997	3,025	100.0		370.9	396.5 (382.4,410.7)	267.6 (257.7,277.4)
1998	3,129	100.0		382.2	403.9 (389.8,418.1)	272.4 (262.5,282.2)
1999	3,009	100.0		367.6	384.7 (371.0,398.5)	260.8 (251.1,270.4)
2000	3,124	100.0		380.8	394.4 (380.5,408.3)	269.1 (259.3,278.8)
2001	3,282	100.0		398.1	407.1 (393.1,421.1)	276.9 (267.1,286.7)
2002	3,317	100.0		400.2	404.2 (390.4,418.0)	275.1 (265.4,284.8)
2003	3,476	100.0		417.4	414.9 (401.1,428.8)	281.1 (271.4,290.8)
2004	3,550	100.0		424.4	415.5 (401.8,429.2)	282.4 (272.8,292.1)
2005	3,605	100.0		427.0	413.3 (399.8,426.8)	282.1 (272.5,291.6)
2006	3,758	100.0		440.4	422.5 (409.0,436.1)	287.0 (277.5,296.5)
2007	4,028	100.0		467.3	444.9 (431.2,458.7)	306.0 (296.2,315.8)
2008	4,083	100.0		468.8	440.1 (426.6,453.6)	300.5 (290.9,310.1)

Female

Year of diagnosis	Number of cases	Percentage of all cancers ex.		Crude rate per 100,000 females	European age standardised incidence rate per 100,000 females (95% CI)	World age standardised incidence rate per 100,000 females (95% CI)
		NMSC				
1993	3,189	100.0		380.8	345.3 (332.7,357.9)	248.0 (238.5,257.5)
1994	3,111	100.0		369.6	336.8 (324.4,349.2)	241.3 (232.0,250.6)
1995	3,167	100.0		374.7	340.3 (327.9,352.7)	242.4 (233.2,251.7)
1996	3,265	100.0		383.5	343.2 (330.8,355.5)	244.9 (235.7,254.1)
1997	3,278	100.0		383.1	339.1 (326.9,351.2)	241.9 (232.8,251.1)
1998	3,308	100.0		385.1	344.0 (331.7,356.2)	246.4 (237.2,255.7)
1999	3,339	100.0		388.0	342.1 (330.0,354.2)	242.9 (233.9,252.0)
2000	3,393	100.0		393.4	349.8 (337.6,362.1)	249.7 (240.5,258.9)
2001	3,291	100.0		380.5	331.0 (319.2,342.8)	236.1 (227.2,245.0)
2002	3,486	100.0		401.7	344.9 (333.0,356.8)	246.2 (237.2,255.2)
2003	3,576	100.0		411.1	353.0 (341.0,365.1)	252.5 (243.4,261.6)
2004	3,647	100.0		417.4	354.6 (342.6,366.6)	255.0 (245.9,264.1)
2005	3,649	100.0		414.6	346.2 (334.5,357.9)	247.0 (238.2,255.8)
2006	3,708	100.0		417.5	348.2 (336.6,359.9)	249.5 (240.7,258.3)
2007	3,896	100.0		434.3	365.9 (354.0,377.8)	262.2 (253.2,271.2)
2008	3,985	100.0		440.8	369.5 (357.6,381.4)	266.5 (257.5,275.5)

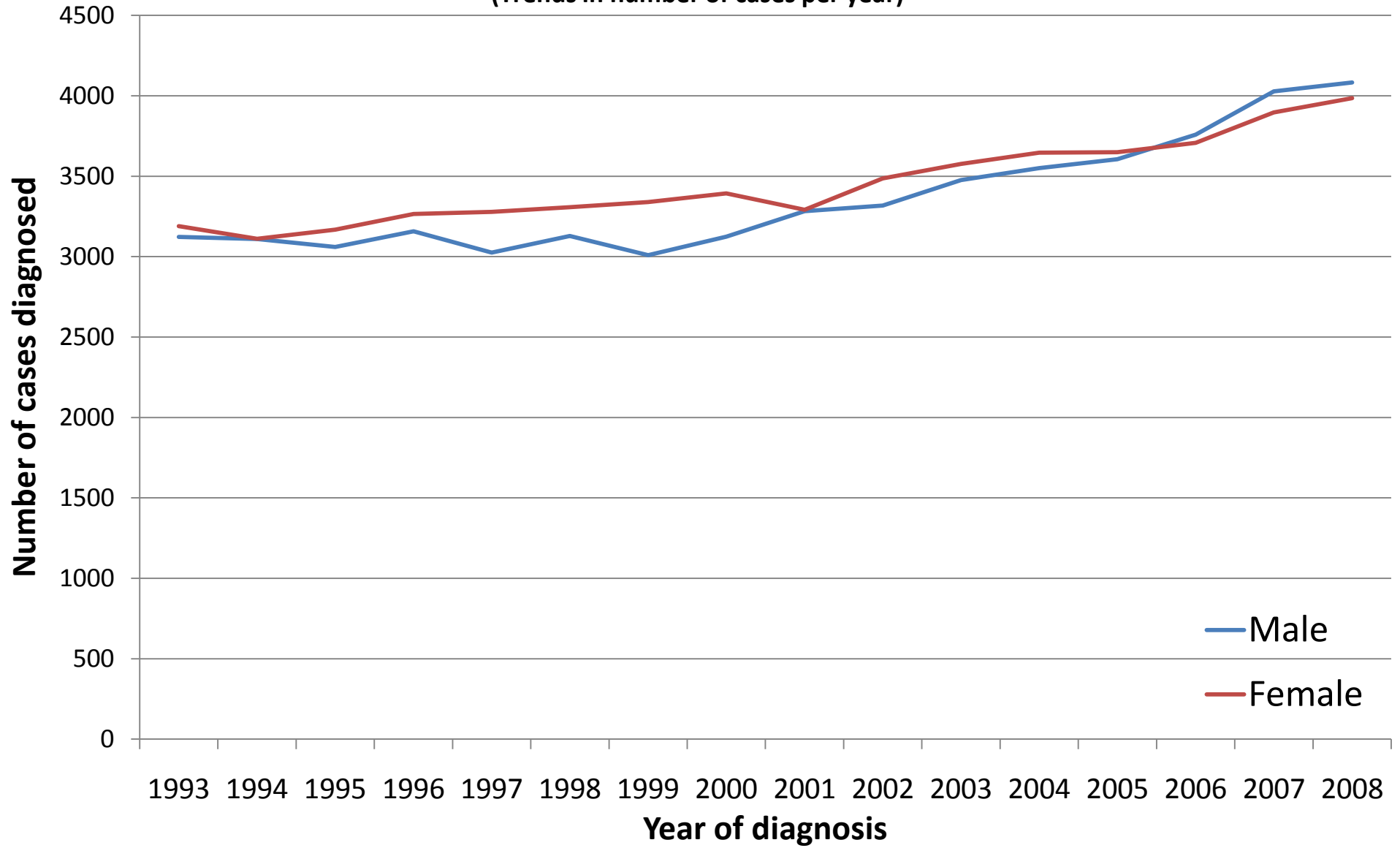
All persons

Year of diagnosis	Number of cases	Percentage of all cancers ex.		Crude rate per 100,000 persons	European age standardised incidence rate per 100,000 persons (95% CI)	World age standardised incidence rate per 100,000 persons (95% CI)
		NMSC				
1993	6,311	100.0		385.9	373.5 (364.1,383.0)	262.2 (255.3,269.1)
1994	6,221	100.0		378.5	367.0 (357.7,376.4)	257.4 (250.6,264.2)
1995	6,227	100.0		377.6	363.1 (353.8,372.3)	253.1 (246.4,259.8)
1996	6,423	100.0		386.5	368.3 (359.1,377.5)	257.6 (250.9,264.3)
1997	6,303	100.0		377.1	356.7 (347.7,365.7)	248.7 (242.1,255.3)
1998	6,437	100.0		383.7	362.6 (353.6,371.7)	253.3 (246.6,259.9)
1999	6,348	100.0		378.1	353.7 (344.9,362.6)	246.6 (240.1,253.1)
2000	6,517	100.0		387.2	363.4 (354.4,372.3)	254.7 (248.1,261.3)
2001	6,573	100.0		389.1	358.8 (349.9,367.6)	250.8 (244.3,257.3)
2002	6,803	100.0		401.0	365.0 (356.2,373.9)	255.4 (248.9,262.0)
2003	7,052	100.0		414.2	374.0 (365.1,382.9)	261.4 (254.9,267.9)
2004	7,197	100.0		420.8	376.5 (367.6,385.4)	264.1 (257.6,270.6)
2005	7,254	100.0		420.7	371.8 (363.1,380.5)	260.3 (253.9,266.7)
2006	7,466	100.0		428.7	377.3 (368.5,386.0)	263.8 (257.4,270.2)
2007	7,924	100.0		450.4	397.4 (388.5,406.3)	279.8 (273.2,286.4)
2008	8,068	100.0		454.5	396.3 (387.5,405.1)	279.0 (272.5,285.4)

NOTES:

NMSC: Non-melanoma skin cancer
CI: Confidence interval

All cancers ex NMSC (C00-C97 ex C44)
(Trends in number of cases per year)



All cancers ex NMSC (C00-C97 ex C44)
(Trends in age-standardised incidence rates)

