

Number of cases and incidence rates by sex and year of diagnosis
Bladder (C67)

Male

Year of diagnosis	Number of cases	Percentage of all cancers ex.		Crude rate per 100,000 males	European age standardised incidence rate per 100,000 males (95% CI)	World age standardised incidence rate per 100,000 males (95% CI)
		NMSC				
1993	156	5.0		19.5	21.6 (18.1,25.0)	14.1 (11.8,16.4)
1994	139	4.5		17.3	19.1 (15.9,22.3)	12.4 (10.2,14.5)
1995	143	4.7		17.8	19.0 (15.8,22.1)	12.4 (10.3,14.5)
1996	177	5.6		21.8	23.1 (19.7,26.5)	14.9 (12.7,17.2)
1997	120	4.0		14.7	15.7 (12.9,18.6)	10.3 (8.4,12.2)
1998	162	5.2		19.8	20.9 (17.6,24.2)	13.5 (11.4,15.7)
1999	157	5.2		19.2	20.0 (16.8,23.2)	13.2 (11.1,15.4)
2000	145	4.6		17.7	18.3 (15.3,21.3)	12.1 (10.0,14.2)
2001	125	3.8		15.2	15.2 (12.5,17.9)	9.7 (7.9,11.5)
2002	130	3.9		15.7	15.8 (13.0,18.5)	10.2 (8.3,12.0)
2003	168	4.8		20.2	20.0 (16.9,23.1)	12.7 (10.7,14.7)
2004	152	4.3		18.2	17.2 (14.4,20.0)	10.9 (9.1,12.7)
2005	135	3.7		16.0	15.3 (12.7,17.9)	9.9 (8.1,11.6)
2006	159	4.2		18.6	17.6 (14.8,20.4)	11.1 (9.3,12.9)
2007	146	3.6		16.9	15.5 (13.0,18.1)	9.8 (8.2,11.5)
2008	149	3.6		17.1	15.6 (13.1,18.1)	9.9 (8.3,11.6)

Female

Year of diagnosis	Number of cases	Percentage of all cancers ex.		Crude rate per 100,000 females	European age standardised incidence rate per 100,000 females (95% CI)	World age standardised incidence rate per 100,000 females (95% CI)
		NMSC				
1993	51	1.6		6.1	4.7 (3.3,6.0)	3.0 (2.1,3.9)
1994	57	1.8		6.8	4.7 (3.4,6.0)	3.0 (2.1,3.8)
1995	66	2.1		7.8	6.4 (4.8,8.0)	4.2 (3.1,5.4)
1996	85	2.6		10.0	7.8 (6.0,9.6)	5.1 (3.9,6.3)
1997	43	1.3		5.0	3.9 (2.7,5.1)	2.6 (1.7,3.4)
1998	72	2.2		8.4	6.3 (4.8,7.8)	4.1 (3.0,5.1)
1999	58	1.7		6.7	5.0 (3.6,6.3)	3.2 (2.3,4.2)
2000	66	1.9		7.7	5.7 (4.3,7.2)	3.7 (2.7,4.6)
2001	57	1.7		6.6	5.0 (3.6,6.3)	3.3 (2.3,4.3)
2002	44	1.3		5.1	3.4 (2.4,4.5)	2.1 (1.4,2.8)
2003	59	1.6		6.8	5.0 (3.6,6.3)	3.2 (2.3,4.2)
2004	63	1.7		7.2	5.9 (4.3,7.4)	3.9 (2.9,5.0)
2005	58	1.6		6.6	4.4 (3.2,5.6)	2.8 (2.0,3.6)
2006	66	1.8		7.4	5.4 (4.0,6.7)	3.5 (2.5,4.4)
2007	47	1.2		5.2	3.9 (2.8,5.1)	2.6 (1.8,3.4)
2008	59	1.5		6.5	4.6 (3.3,5.8)	2.9 (2.1,3.8)

All persons

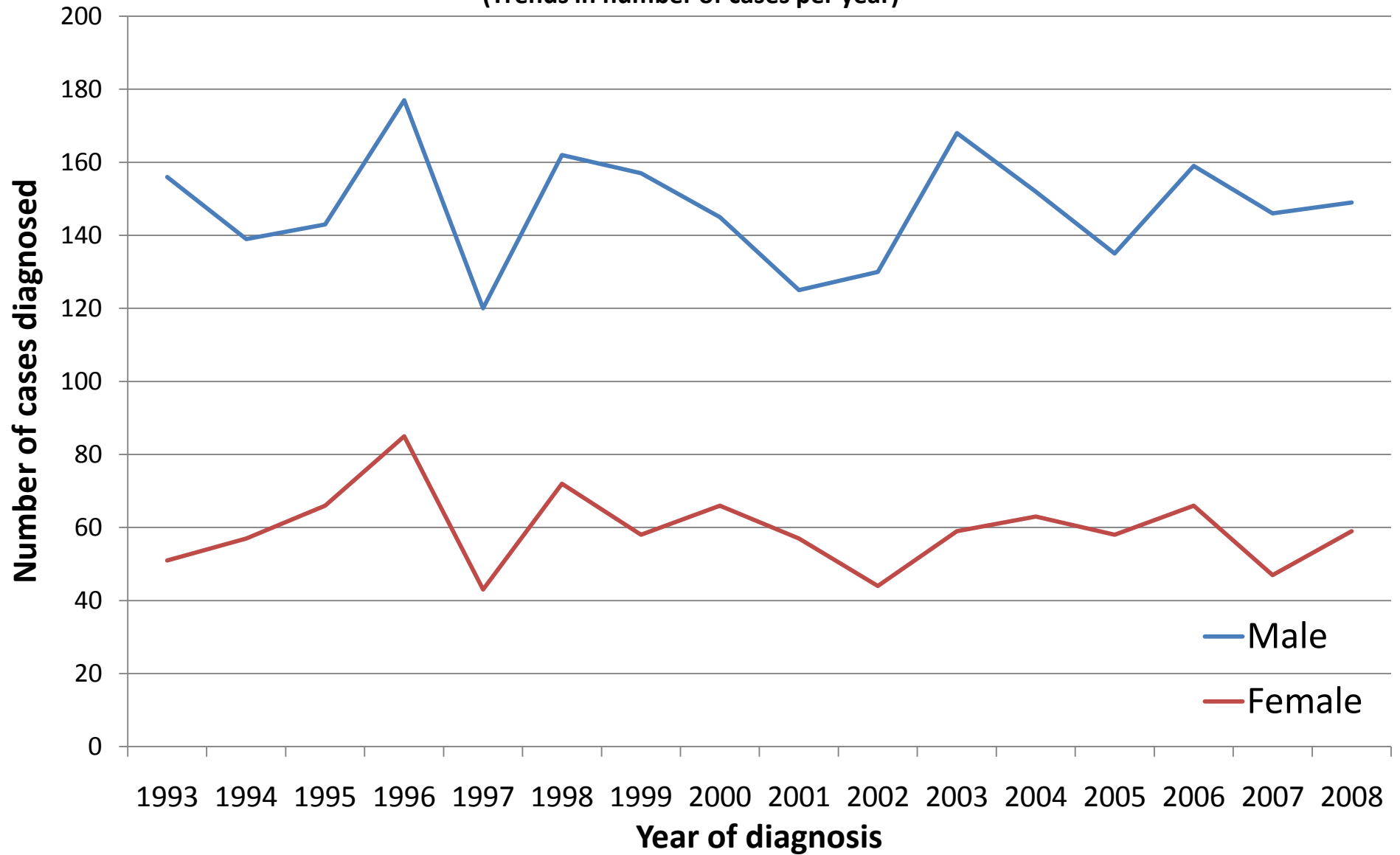
Year of diagnosis	Number of cases	Percentage of all cancers ex.		Crude rate per 100,000 persons	European age standardised incidence rate per 100,000 persons (95% CI)	World age standardised incidence rate per 100,000 persons (95% CI)
		NMSC				
1993	207	3.3		12.7	11.6 (10.0,13.3)	7.7 (6.6,8.9)
1994	196	3.2		11.9	10.8 (9.2,12.4)	7.0 (6.0,8.1)
1995	209	3.4		12.7	11.6 (9.9,13.2)	7.7 (6.6,8.8)
1996	262	4.1		15.8	14.2 (12.4,15.9)	9.3 (8.1,10.5)
1997	163	2.6		9.8	8.8 (7.4,10.2)	5.9 (4.9,6.9)
1998	234	3.6		13.9	12.5 (10.8,14.1)	8.2 (7.0,9.3)
1999	215	3.4		12.8	11.5 (10.0,13.1)	7.7 (6.6,8.8)
2000	211	3.2		12.5	11.1 (9.5,12.6)	7.3 (6.3,8.4)
2001	182	2.8		10.8	9.2 (7.8,10.6)	6.0 (5.1,7.0)
2002	174	2.6		10.3	8.7 (7.3,10.0)	5.6 (4.7,6.5)
2003	227	3.2		13.3	11.3 (9.8,12.8)	7.3 (6.3,8.4)
2004	215	3.0		12.6	10.5 (9.1,12.0)	6.9 (5.9,7.8)
2005	193	2.7		11.2	9.2 (7.9,10.6)	6.0 (5.1,6.9)
2006	225	3.0		12.9	10.5 (9.1,11.9)	6.7 (5.8,7.7)
2007	193	2.4		11.0	8.9 (7.7,10.2)	5.8 (4.9,6.7)
2008	208	2.6		11.7	9.3 (8.0,10.6)	6.0 (5.1,6.9)

NOTES:

NMSC: Non-melanoma skin cancer

CI: Confidence interval

Bladder (C67)
(Trends in number of cases per year)



Bladder (C67)

(Trends in age-standardised incidence rates)

