

**Number of cases and incidence rates by sex and year of diagnosis
Colon (C18)**

Male

Year of diagnosis	Number of cases	Percentage of all cancers ex.		Crude rate per 100,000 males	European age standardised incidence rate per 100,000 males (95% CI)	World age standardised incidence rate per 100,000 males (95% CI)
		NMSC				
1993	290	9.3		36.3	40.5 (35.8,45.2)	26.3 (23.2,29.5)
1994	305	9.8		38.0	42.0 (37.2,46.7)	27.9 (24.6,31.1)
1995	316	10.3		39.3	42.8 (38.0,47.6)	27.6 (24.4,30.7)
1996	312	9.9		38.5	42.3 (37.5,47.0)	28.3 (25.0,31.5)
1997	298	9.9		36.5	38.7 (34.2,43.1)	25.0 (22.0,28.0)
1998	303	9.7		37.0	39.6 (35.1,44.1)	26.1 (23.1,29.2)
1999	290	9.6		35.4	37.4 (33.1,41.8)	24.8 (21.9,27.8)
2000	273	8.7		33.3	34.5 (30.4,38.6)	22.9 (20.0,25.7)
2001	319	9.7		38.7	39.5 (35.1,43.8)	26.2 (23.2,29.2)
2002	303	9.1		36.6	37.1 (32.9,41.4)	24.4 (21.6,27.3)
2003	313	9.0		37.6	36.8 (32.7,41.0)	23.9 (21.1,26.6)
2004	306	8.6		36.6	35.5 (31.5,39.5)	23.3 (20.6,26.0)
2005	365	10.1		43.2	40.8 (36.5,45.0)	26.7 (23.9,29.6)
2006	361	9.6		42.3	39.8 (35.7,44.0)	25.7 (22.9,28.4)
2007	396	9.8		45.9	43.0 (38.7,47.3)	28.2 (25.3,31.1)
2008	378	9.3		43.4	40.8 (36.7,45.0)	27.4 (24.5,30.3)

Female

Year of diagnosis	Number of cases	Percentage of all cancers ex.		Crude rate per 100,000 females	European age standardised incidence rate per 100,000 females (95% CI)	World age standardised incidence rate per 100,000 females (95% CI)
		NMSC				
1993	322	10.1		38.5	31.5 (27.9,35.2)	21.0 (18.4,23.5)
1994	311	10.0		36.9	31.0 (27.3,34.6)	20.6 (18.0,23.2)
1995	345	10.9		40.8	33.0 (29.3,36.8)	22.0 (19.3,24.6)
1996	310	9.5		36.4	29.6 (26.1,33.1)	19.6 (17.2,22.1)
1997	311	9.5		36.3	28.4 (25.1,31.8)	18.7 (16.4,21.1)
1998	323	9.8		37.6	31.4 (27.8,35.0)	21.3 (18.7,23.9)
1999	333	10.0		38.7	30.2 (26.7,33.6)	20.0 (17.6,22.4)
2000	272	8.0		31.5	25.6 (22.4,28.9)	17.0 (14.8,19.3)
2001	277	8.4		32.0	24.8 (21.8,27.9)	16.4 (14.3,18.6)
2002	313	9.0		36.1	28.4 (25.1,31.7)	19.1 (16.7,21.4)
2003	311	8.7		35.8	27.6 (24.3,30.8)	18.4 (16.1,20.7)
2004	317	8.7		36.3	28.2 (24.9,31.5)	18.9 (16.6,21.2)
2005	283	7.8		32.2	23.8 (20.9,26.7)	15.7 (13.7,17.8)
2006	334	9.0		37.6	28.3 (25.1,31.5)	18.4 (16.2,20.6)
2007	383	9.8		42.7	32.2 (28.8,35.6)	21.5 (19.1,24.0)
2008	368	9.2		40.7	30.1 (26.8,33.3)	19.9 (17.6,22.2)

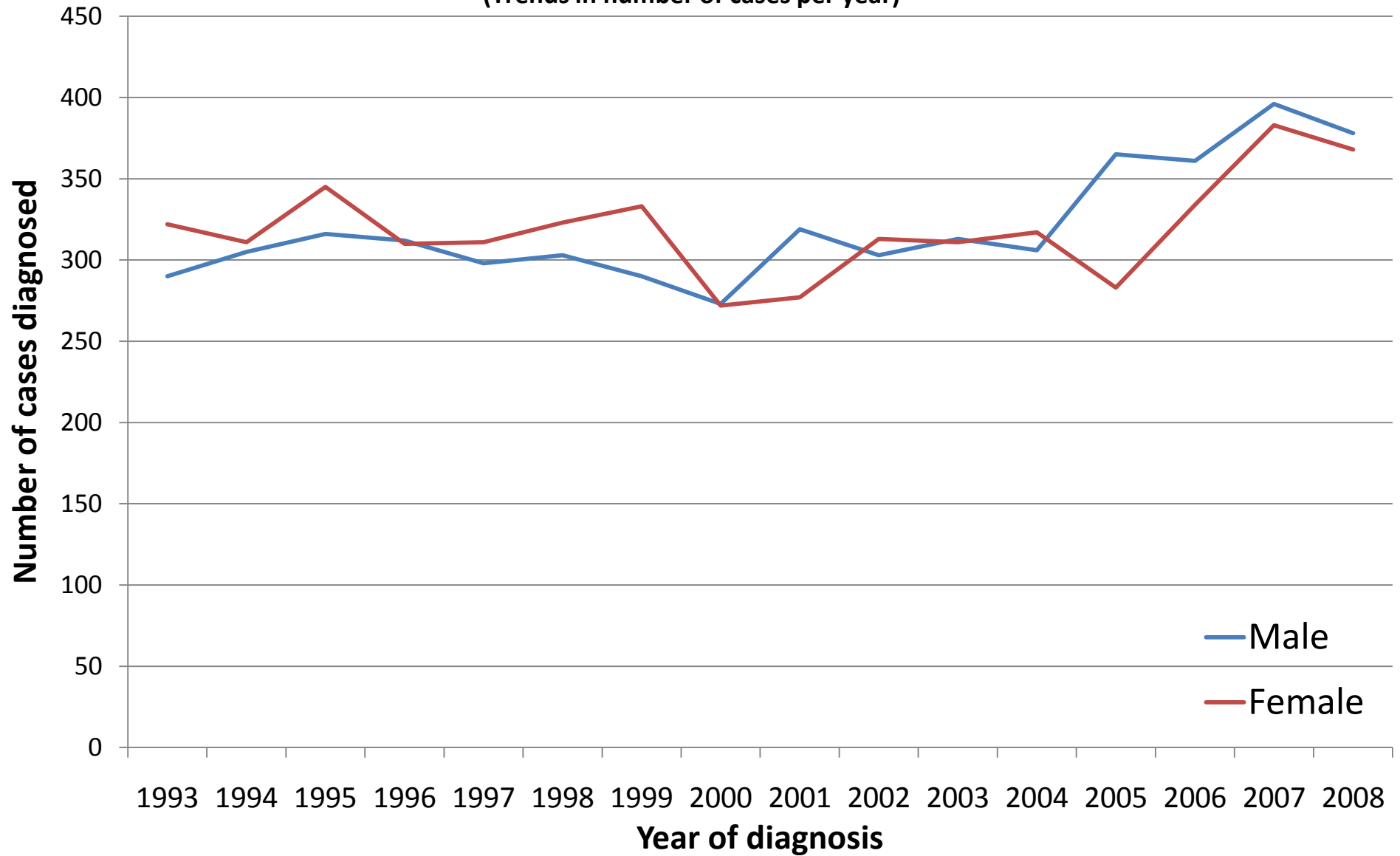
All persons

Year of diagnosis	Number of cases	Percentage of all cancers ex.		Crude rate per 100,000 persons	European age standardised incidence rate per 100,000 persons (95% CI)	World age standardised incidence rate per 100,000 persons (95% CI)
		NMSC				
1993	612	9.7		37.4	35.1 (32.2,37.9)	23.1 (21.1,25.1)
1994	616	9.9		37.5	35.4 (32.5,38.3)	23.6 (21.6,25.6)
1995	661	10.6		40.1	36.6 (33.7,39.5)	24.0 (22.1,26.0)
1996	622	9.7		37.4	34.8 (32.0,37.6)	23.3 (21.3,25.2)
1997	609	9.7		36.4	32.7 (30.0,35.3)	21.3 (19.5,23.2)
1998	626	9.7		37.3	34.5 (31.7,37.3)	23.2 (21.2,25.1)
1999	623	9.8		37.1	33.3 (30.6,36.0)	22.1 (20.2,24.0)
2000	545	8.4		32.4	29.4 (26.9,32.0)	19.6 (17.8,21.3)
2001	596	9.1		35.3	31.1 (28.6,33.7)	20.7 (19.0,22.5)
2002	616	9.1		36.3	32.0 (29.4,34.6)	21.3 (19.5,23.1)
2003	624	8.8		36.6	31.3 (28.8,33.8)	20.6 (18.9,22.4)
2004	623	8.7		36.4	31.3 (28.8,33.9)	20.8 (19.1,22.6)
2005	648	8.9		37.6	31.3 (28.8,33.8)	20.7 (19.0,22.4)
2006	695	9.3		39.9	33.2 (30.6,35.7)	21.6 (19.8,23.3)
2007	779	9.8		44.3	36.8 (34.1,39.4)	24.4 (22.6,26.3)
2008	746	9.2		42.0	34.9 (32.3,37.4)	23.3 (21.5,25.1)

NOTES:

NMSC: Non-melanoma skin cancer
CI: Confidence interval

Colon (C18)
(Trends in number of cases per year)



Colon (C18)

(Trends in age-standardised incidence rates)

