

**Number of cases and incidence rates by sex and year of diagnosis**  
**Colorectal (C18-C21)**

**Male**

Year of diagnosis	Number of cases	Percentage of all cancers ex.		Crude rate per 100,000 males	European age standardised incidence rate per 100,000 males (95% CI)	World age standardised incidence rate per 100,000 males (95% CI)
		NMSC				
1993	474	15.2		59.4	66.3 (60.2,72.3)	44.0 (39.9,48.2)
1994	482	15.5		60.1	66.1 (60.1,72.1)	44.1 (40.1,48.2)
1995	491	16.0		61.1	66.6 (60.6,72.6)	43.5 (39.6,47.5)
1996	500	15.8		61.7	67.0 (61.1,73.0)	45.0 (40.9,49.0)
1997	455	15.0		55.8	59.5 (54.0,65.0)	38.9 (35.1,42.6)
1998	490	15.7		59.9	63.9 (58.1,69.6)	42.3 (38.4,46.2)
1999	448	14.9		54.7	57.5 (52.1,62.9)	38.4 (34.7,42.0)
2000	457	14.6		55.7	58.0 (52.7,63.4)	38.8 (35.1,42.5)
2001	533	16.2		64.7	66.1 (60.5,71.8)	44.3 (40.4,48.2)
2002	468	14.1		56.5	57.4 (52.1,62.7)	38.1 (34.5,41.7)
2003	559	16.1		67.1	66.5 (60.9,72.1)	44.1 (40.3,47.9)
2004	520	14.6		62.2	61.0 (55.7,66.2)	40.9 (37.3,44.5)
2005	582	16.1		68.9	66.1 (60.7,71.5)	44.1 (40.4,47.8)
2006	574	15.3		67.3	64.1 (58.8,69.4)	42.3 (38.7,45.9)
2007	647	16.1		75.1	70.8 (65.3,76.3)	47.5 (43.7,51.3)
2008	600	14.7		68.9	65.1 (59.9,70.4)	44.1 (40.5,47.8)

**Female**

Year of diagnosis	Number of cases	Percentage of all cancers ex.		Crude rate per 100,000 females	European age standardised incidence rate per 100,000 females (95% CI)	World age standardised incidence rate per 100,000 females (95% CI)
		NMSC				
1993	451	14.1		53.9	44.6 (40.2,49.0)	29.8 (26.7,32.9)
1994	433	13.9		51.4	42.8 (38.6,47.1)	28.5 (25.4,31.5)
1995	494	15.6		58.5	47.7 (43.2,52.1)	31.7 (28.5,34.9)
1996	467	14.3		54.9	44.6 (40.3,48.9)	29.7 (26.7,32.8)
1997	456	13.9		53.3	42.1 (38.0,46.2)	27.8 (24.9,30.7)
1998	441	13.3		51.3	43.3 (39.1,47.6)	29.5 (26.5,32.6)
1999	456	13.7		53.0	41.8 (37.7,45.8)	27.8 (24.9,30.6)
2000	424	12.5		49.2	40.5 (36.5,44.6)	27.3 (24.4,30.2)
2001	432	13.1		49.9	40.1 (36.2,44.1)	27.0 (24.2,29.9)
2002	447	12.8		51.5	41.3 (37.3,45.3)	27.9 (25.0,30.8)
2003	454	12.7		52.2	40.0 (36.1,43.9)	26.7 (23.9,29.5)
2004	472	12.9		54.0	42.6 (38.6,46.7)	28.9 (26.0,31.7)
2005	427	11.7		48.5	37.1 (33.4,40.8)	24.8 (22.2,27.5)
2006	485	13.1		54.6	41.5 (37.6,45.3)	27.2 (24.5,30.0)
2007	517	13.3		57.6	44.0 (40.0,48.0)	29.5 (26.7,32.3)
2008	508	12.7		56.2	42.5 (38.6,46.4)	28.5 (25.8,31.3)

**All persons**

Year of diagnosis	Number of cases	Percentage of all cancers ex.		Crude rate per 100,000 persons	European age standardised incidence rate per 100,000 persons (95% CI)	World age standardised incidence rate per 100,000 persons (95% CI)
		NMSC				
1993	925	14.7		56.6	53.7 (50.1,57.2)	35.9 (33.4,38.4)
1994	915	14.7		55.7	52.6 (49.1,56.1)	35.2 (32.7,37.6)
1995	985	15.8		59.7	55.2 (51.6,58.7)	36.5 (34.1,39.0)
1996	967	15.1		58.2	54.2 (50.6,57.7)	36.4 (33.9,38.8)
1997	911	14.5		54.5	49.4 (46.1,52.7)	32.6 (30.3,34.8)
1998	931	14.5		55.5	51.6 (48.2,55.0)	34.8 (32.4,37.2)
1999	904	14.2		53.8	48.5 (45.3,51.7)	32.4 (30.1,34.7)
2000	881	13.5		52.3	48.1 (44.8,51.3)	32.4 (30.1,34.6)
2001	965	14.7		57.1	51.5 (48.1,54.8)	34.7 (32.4,37.0)
2002	915	13.4		53.9	48.1 (44.9,51.3)	32.3 (30.0,34.5)
2003	1,013	14.4		59.5	51.5 (48.3,54.8)	34.4 (32.1,36.7)
2004	992	13.8		58.0	50.8 (47.6,54.1)	34.3 (32.0,36.6)
2005	1,009	13.9		58.5	50.0 (46.8,53.1)	33.6 (31.4,35.8)
2006	1,059	14.2		60.8	51.5 (48.3,54.7)	34.0 (31.8,36.2)
2007	1,164	14.7		66.2	56.1 (52.8,59.4)	37.7 (35.4,40.0)
2008	1,108	13.7		62.4	52.8 (49.6,56.0)	35.7 (33.5,38.0)

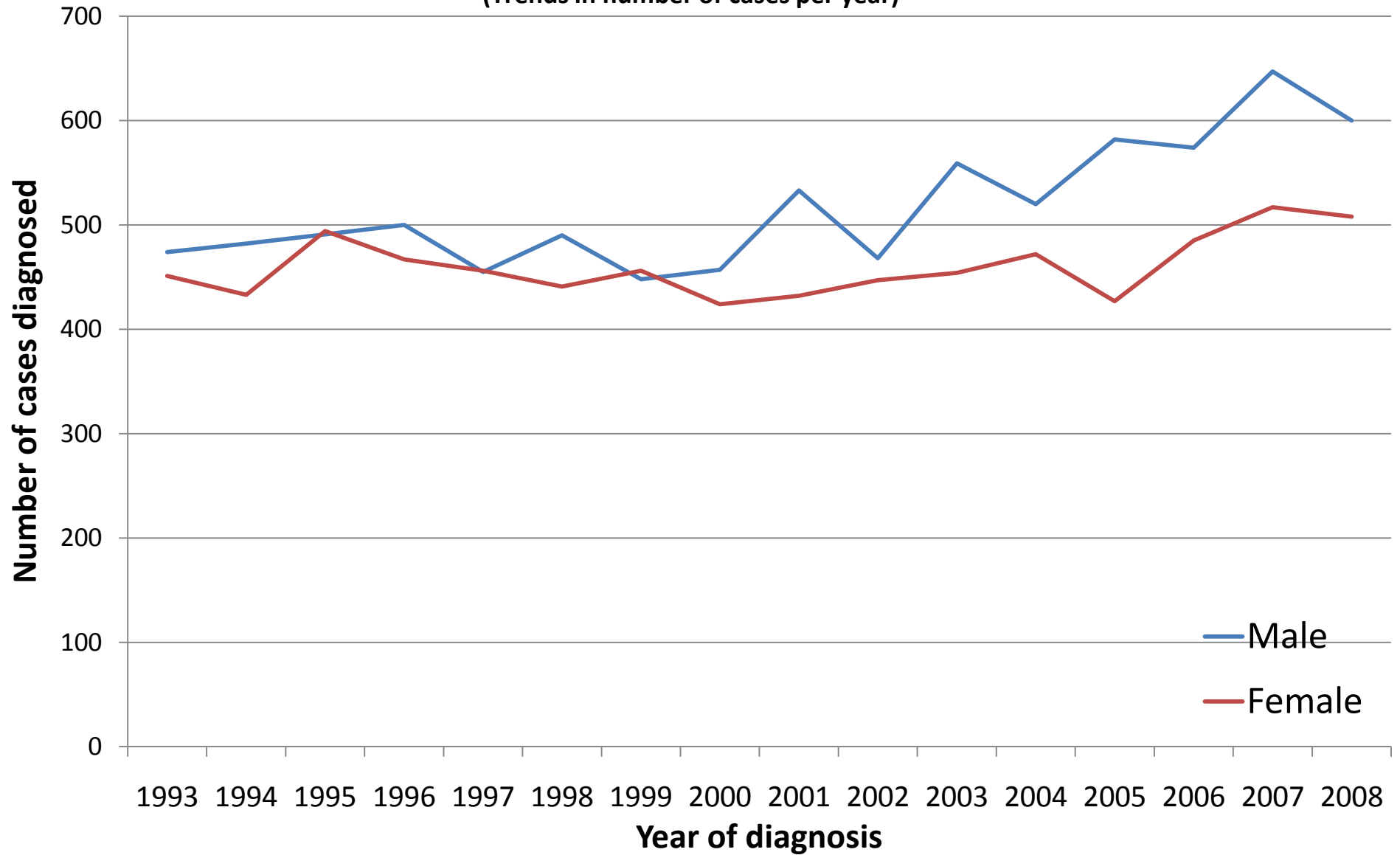
**NOTES:**

NMSC: Non-melanoma skin cancer

CI: Confidence interval

# Colorectal (C18-C21)

(Trends in number of cases per year)



# Colorectal (C18-C21)

(Trends in age-standardised incidence rates)

