

Number of cases and incidence rates by sex and year of diagnosis
Kidney (C64-C66,C68)

Male

Year of diagnosis	Number of cases	Percentage of all cancers ex.		Crude rate per 100,000 males	European age standardised incidence rate per 100,000 males (95% CI)	World age standardised incidence rate per 100,000 males (95% CI)
		NMSC				
1993	96	3.1		12.0	13.3 (10.6,16.0)	9.4 (7.4,11.3)
1994	113	3.6		14.1	15.5 (12.6,18.4)	11.1 (9.0,13.2)
1995	96	3.1		11.9	13.2 (10.5,15.9)	9.3 (7.4,11.3)
1996	94	3.0		11.6	13.0 (10.3,15.6)	9.1 (7.2,11.0)
1997	99	3.3		12.1	13.1 (10.5,15.7)	9.5 (7.5,11.5)
1998	99	3.2		12.1	12.9 (10.3,15.5)	9.4 (7.4,11.3)
1999	102	3.4		12.5	13.4 (10.8,16.1)	9.2 (7.4,11.1)
2000	93	3.0		11.3	11.9 (9.5,14.3)	8.0 (6.4,9.7)
2001	107	3.3		13.0	13.9 (11.2,16.6)	9.6 (7.7,11.4)
2002	116	3.5		14.0	14.2 (11.6,16.8)	9.9 (8.0,11.9)
2003	130	3.7		15.6	15.7 (13.0,18.5)	10.8 (8.8,12.7)
2004	110	3.1		13.2	12.8 (10.4,15.2)	8.9 (7.2,10.6)
2005	105	2.9		12.4	12.1 (9.7,14.4)	8.2 (6.5,9.8)
2006	134	3.6		15.7	15.6 (13.0,18.3)	10.9 (8.9,12.8)
2007	155	3.8		18.0	17.4 (14.6,20.2)	12.0 (10.0,13.9)
2008	168	4.1		19.3	18.3 (15.5,21.1)	12.5 (10.6,14.5)

Female

Year of diagnosis	Number of cases	Percentage of all cancers ex.		Crude rate per 100,000 females	European age standardised incidence rate per 100,000 females (95% CI)	World age standardised incidence rate per 100,000 females (95% CI)
		NMSC				
1993	70	2.2		8.4	7.9 (6.0,9.9)	5.9 (4.4,7.4)
1994	47	1.5		5.6	5.0 (3.5,6.5)	3.5 (2.4,4.6)
1995	68	2.1		8.0	7.6 (5.7,9.5)	5.4 (4.0,6.8)
1996	63	1.9		7.4	6.5 (4.8,8.1)	4.6 (3.3,5.9)
1997	72	2.2		8.4	7.6 (5.8,9.5)	5.6 (4.1,7.1)
1998	75	2.3		8.7	7.2 (5.5,8.9)	5.2 (3.8,6.5)
1999	58	1.7		6.7	6.1 (4.5,7.8)	4.4 (3.1,5.6)
2000	70	2.1		8.1	7.1 (5.4,8.9)	5.2 (3.8,6.5)
2001	64	1.9		7.4	6.5 (4.8,8.1)	4.7 (3.4,6.0)
2002	65	1.9		7.5	6.4 (4.7,8.0)	4.5 (3.2,5.7)
2003	80	2.2		9.2	8.0 (6.2,9.8)	6.0 (4.5,7.6)
2004	81	2.2		9.3	7.7 (6.0,9.5)	5.5 (4.2,6.8)
2005	75	2.1		8.5	6.9 (5.3,8.6)	4.9 (3.6,6.1)
2006	84	2.3		9.5	7.9 (6.1,9.6)	5.4 (4.2,6.7)
2007	83	2.1		9.3	7.8 (6.0,9.5)	5.4 (4.1,6.6)
2008	127	3.2		14.0	11.1 (9.1,13.2)	7.8 (6.3,9.3)

All persons

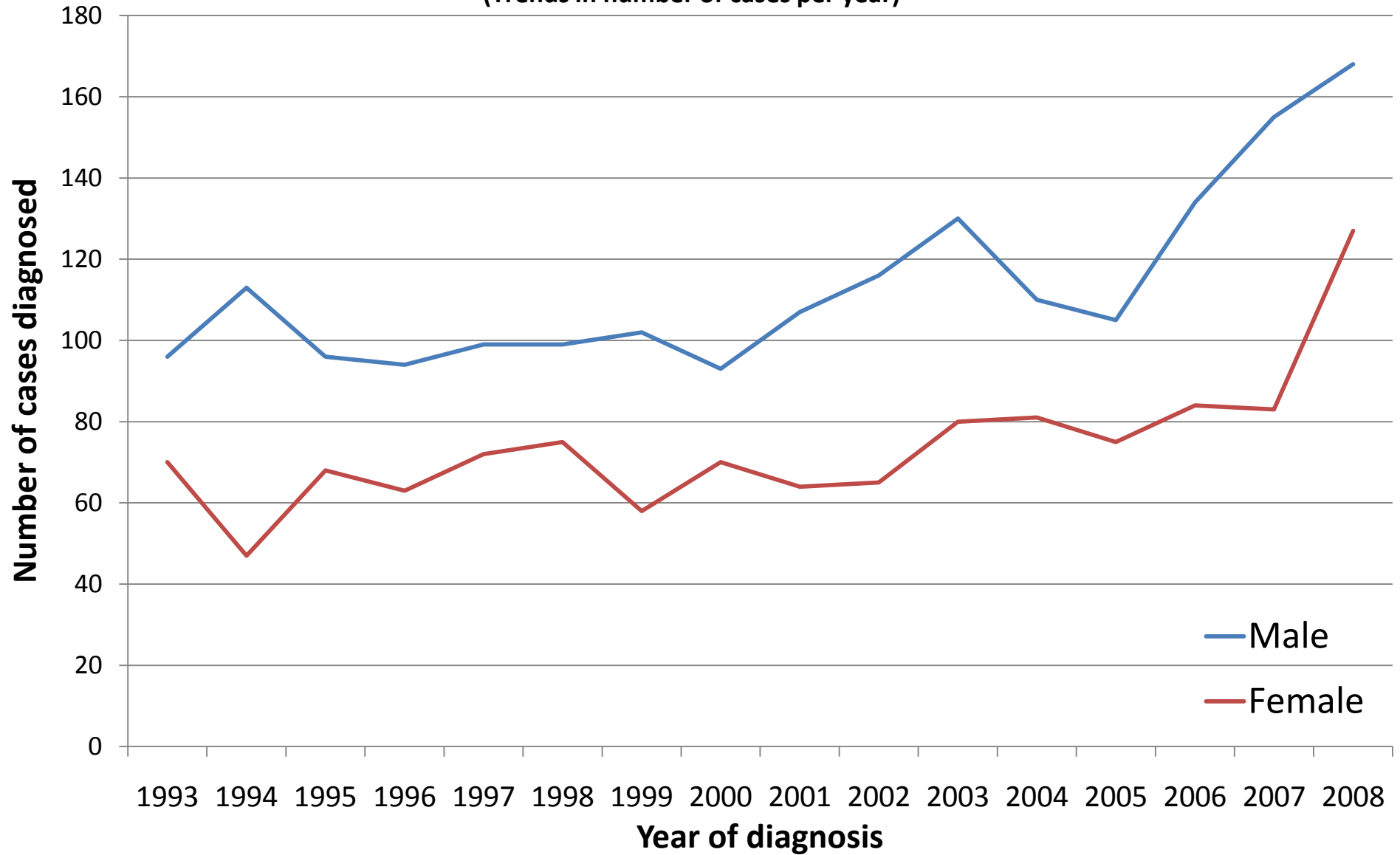
Year of diagnosis	Number of cases	Percentage of all cancers ex.		Crude rate per 100,000 persons	European age standardised incidence rate per 100,000 persons (95% CI)	World age standardised incidence rate per 100,000 persons (95% CI)
		NMSC				
1993	166	2.6		10.1	10.2 (8.6,11.8)	7.4 (6.2,8.6)
1994	160	2.6		9.7	9.5 (8.0,11.0)	6.8 (5.7,8.0)
1995	164	2.6		9.9	10.0 (8.4,11.6)	7.1 (6.0,8.3)
1996	157	2.4		9.4	9.3 (7.8,10.8)	6.6 (5.5,7.7)
1997	171	2.7		10.2	10.0 (8.5,11.6)	7.4 (6.2,8.6)
1998	174	2.7		10.4	9.8 (8.3,11.3)	7.1 (5.9,8.2)
1999	160	2.5		9.5	9.3 (7.8,10.8)	6.5 (5.4,7.6)
2000	163	2.5		9.7	9.2 (7.8,10.6)	6.4 (5.4,7.5)
2001	171	2.6		10.1	9.7 (8.2,11.2)	6.9 (5.8,8.0)
2002	181	2.7		10.7	9.9 (8.4,11.4)	7.0 (5.9,8.1)
2003	210	3.0		12.3	11.3 (9.7,12.8)	8.1 (6.9,9.3)
2004	191	2.7		11.2	10.0 (8.6,11.5)	7.1 (6.0,8.1)
2005	180	2.5		10.4	9.2 (7.8,10.5)	6.3 (5.3,7.3)
2006	218	2.9		12.5	11.3 (9.8,12.8)	7.9 (6.8,9.0)
2007	238	3.0		13.5	12.2 (10.6,13.8)	8.4 (7.3,9.6)
2008	295	3.7		16.6	14.4 (12.7,16.1)	10.0 (8.8,11.2)

NOTES:

NMSC: Non-melanoma skin cancer

CI: Confidence interval

Kidney (C64-C66,C68) (Trends in number of cases per year)



Kidney (C64-C66,C68)

(Trends in age-standardised incidence rates)

