

**Number of cases and incidence rates by sex and year of diagnosis
Leukaemia (C91-C95)**

Male						
Year of diagnosis	Number of cases	Percentage of all cancers ex.		Crude rate per 100,000 males	European age standardised incidence rate per 100,000 males (95% CI)	World age standardised incidence rate per 100,000 males (95% CI)
		NMSC				
1993	93	3.0		11.7	12.4 (9.8,14.9)	9.6 (7.6,11.7)
1994	103	3.3		12.8	13.5 (10.9,16.2)	11.0 (8.8,13.3)
1995	91	3.0		11.3	11.9 (9.4,14.3)	8.8 (6.9,10.8)
1996	77	2.4		9.5	9.9 (7.7,12.2)	7.6 (5.8,9.4)
1997	104	3.4		12.8	13.3 (10.7,15.9)	10.5 (8.3,12.6)
1998	104	3.3		12.7	13.0 (10.4,15.5)	9.5 (7.5,11.4)
1999	91	3.0		11.1	11.6 (9.2,14.0)	8.9 (6.9,10.8)
2000	100	3.2		12.2	12.4 (9.9,14.8)	9.3 (7.3,11.3)
2001	84	2.6		10.2	10.6 (8.3,12.8)	7.9 (6.1,9.7)
2002	104	3.1		12.5	12.8 (10.3,15.2)	9.9 (7.9,12.0)
2003	69	2.0		8.3	8.5 (6.5,10.5)	6.5 (4.9,8.2)
2004	97	2.7		11.6	11.4 (9.1,13.7)	8.9 (7.0,10.8)
2005	97	2.7		11.5	11.5 (9.2,13.8)	8.7 (6.9,10.5)
2006	91	2.4		10.7	10.2 (8.0,12.3)	7.4 (5.7,9.0)
2007	92	2.3		10.7	10.5 (8.3,12.7)	8.3 (6.4,10.1)
2008	114	2.8		13.1	12.2 (9.9,14.4)	8.7 (6.9,10.4)

Female						
Year of diagnosis	Number of cases	Percentage of all cancers ex.		Crude rate per 100,000 females	European age standardised incidence rate per 100,000 females (95% CI)	World age standardised incidence rate per 100,000 females (95% CI)
		NMSC				
1993	65	2.0		7.8	6.9 (5.2,8.7)	5.8 (4.2,7.4)
1994	54	1.7		6.4	5.6 (4.0,7.1)	4.9 (3.4,6.5)
1995	75	2.4		8.9	7.7 (5.8,9.5)	6.1 (4.5,7.6)
1996	76	2.3		8.9	8.1 (6.2,10.0)	6.9 (5.1,8.6)
1997	89	2.7		10.4	9.0 (7.0,10.9)	7.4 (5.6,9.2)
1998	66	2.0		7.7	6.8 (5.1,8.5)	5.4 (3.9,6.9)
1999	58	1.7		6.7	5.3 (3.9,6.8)	4.2 (2.9,5.5)
2000	69	2.0		8.0	6.7 (5.0,8.3)	5.3 (3.9,6.8)
2001	58	1.8		6.7	5.3 (3.8,6.7)	4.1 (2.8,5.3)
2002	77	2.2		8.9	7.0 (5.3,8.7)	5.2 (3.8,6.6)
2003	63	1.8		7.2	6.2 (4.6,7.8)	5.2 (3.7,6.6)
2004	71	1.9		8.1	6.8 (5.2,8.5)	5.7 (4.1,7.3)
2005	83	2.3		9.4	7.5 (5.8,9.2)	5.8 (4.4,7.3)
2006	83	2.2		9.3	7.8 (6.0,9.6)	6.5 (4.8,8.2)
2007	64	1.6		7.1	5.9 (4.4,7.4)	4.5 (3.2,5.8)
2008	81	2.0		9.0	7.5 (5.8,9.2)	6.3 (4.7,7.9)

All persons						
Year of diagnosis	Number of cases	Percentage of all cancers ex.		Crude rate per 100,000 persons	European age standardised incidence rate per 100,000 persons (95% CI)	World age standardised incidence rate per 100,000 persons (95% CI)
		NMSC				
1993	158	2.5		9.7	9.2 (7.7,10.7)	7.5 (6.2,8.7)
1994	157	2.5		9.6	8.9 (7.5,10.4)	7.7 (6.3,9.0)
1995	166	2.7		10.1	9.4 (7.9,10.9)	7.3 (6.0,8.5)
1996	153	2.4		9.2	8.6 (7.2,10.0)	7.0 (5.8,8.3)
1997	193	3.1		11.5	10.9 (9.3,12.5)	8.8 (7.4,10.2)
1998	170	2.6		10.1	9.3 (7.8,10.7)	7.1 (5.9,8.3)
1999	149	2.3		8.9	8.0 (6.7,9.3)	6.3 (5.2,7.4)
2000	169	2.6		10.0	9.1 (7.7,10.5)	7.1 (5.9,8.3)
2001	142	2.2		8.4	7.5 (6.3,8.8)	5.8 (4.7,6.9)
2002	181	2.7		10.7	9.6 (8.2,11.1)	7.4 (6.2,8.7)
2003	132	1.9		7.8	7.1 (5.9,8.3)	5.7 (4.6,6.8)
2004	168	2.3		9.8	8.9 (7.5,10.3)	7.2 (5.9,8.4)
2005	180	2.5		10.4	9.3 (7.9,10.7)	7.2 (6.0,8.3)
2006	174	2.3		10.0	8.8 (7.4,10.1)	6.8 (5.7,8.0)
2007	156	2.0		8.9	8.0 (6.7,9.2)	6.3 (5.1,7.4)
2008	195	2.4		11.0	9.4 (8.1,10.8)	7.2 (6.1,8.4)

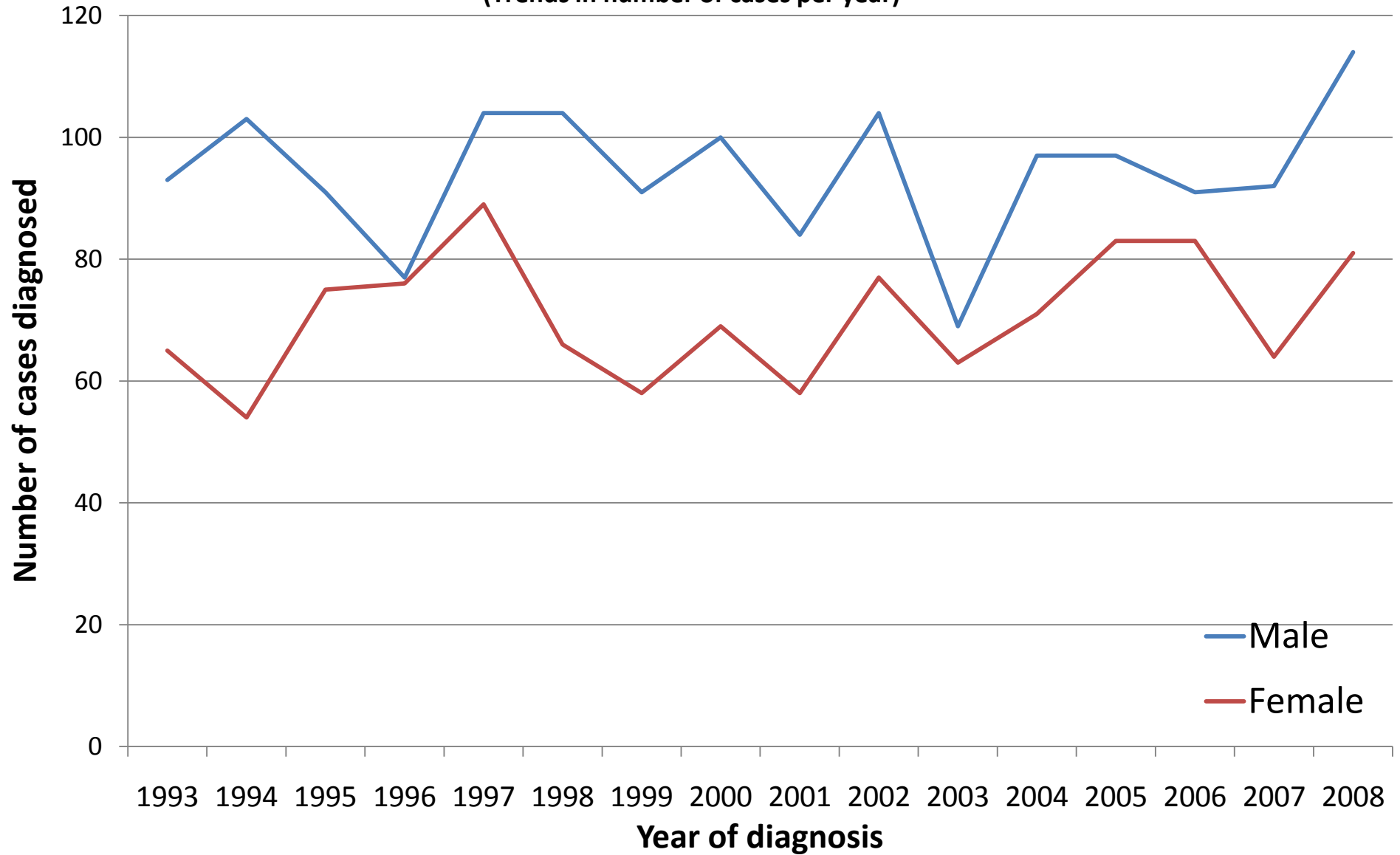
NOTES:

NMSC: Non-melanoma skin cancer

CI: Confidence interval

Leukaemia (C91-C95)

(Trends in number of cases per year)



Leukaemia (C91-C95)

(Trends in age-standardised incidence rates)

