

Number of cases and incidence rates by sex and year of diagnosis
Lung (C33,C34)

Male

Year of diagnosis	Number of cases	Percentage of all cancers ex.		Crude rate per 100,000 males	European age standardised incidence rate per 100,000 males (95% CI)	World age standardised incidence rate per 100,000 males (95% CI)
		NMSC				
1993	565	18.1		70.8	77.9 (71.4,84.4)	52.2 (47.7,56.6)
1994	625	20.1		77.9	87.5 (80.6,94.5)	59.2 (54.5,64.0)
1995	546	17.8		67.9	73.1 (66.9,79.3)	48.8 (44.5,53.0)
1996	551	17.4		68.0	72.7 (66.6,78.9)	48.3 (44.2,52.5)
1997	553	18.3		67.8	72.9 (66.7,79.0)	48.6 (44.4,52.8)
1998	562	18.0		68.6	71.8 (65.8,77.7)	47.7 (43.7,51.8)
1999	511	17.0		62.4	64.9 (59.2,70.6)	42.6 (38.8,46.4)
2000	518	16.6		63.1	65.6 (59.9,71.3)	43.6 (39.7,47.5)
2001	567	17.3		68.8	70.0 (64.1,75.8)	46.6 (42.7,50.6)
2002	509	15.3		61.4	61.7 (56.3,67.2)	40.7 (37.1,44.4)
2003	536	15.4		64.4	63.4 (58.0,68.8)	41.6 (37.9,45.2)
2004	598	16.8		71.5	68.7 (63.1,74.2)	44.5 (40.8,48.2)
2005	558	15.5		66.1	63.6 (58.3,68.9)	41.9 (38.3,45.5)
2006	573	15.2		67.1	63.6 (58.4,68.9)	42.2 (38.6,45.8)
2007	598	14.8		69.4	64.9 (59.7,70.2)	42.7 (39.2,46.3)
2008	624	15.3		71.7	65.8 (60.6,71.0)	42.7 (39.2,46.2)

Female

Year of diagnosis	Number of cases	Percentage of all cancers ex.		Crude rate per 100,000 females	European age standardised incidence rate per 100,000 females (95% CI)	World age standardised incidence rate per 100,000 females (95% CI)
		NMSC				
1993	320	10.0		38.2	34.6 (30.6,38.5)	24.2 (21.3,27.0)
1994	311	10.0		36.9	32.6 (28.8,36.4)	22.7 (19.9,25.4)
1995	331	10.5		39.2	34.2 (30.3,38.0)	23.3 (20.6,26.1)
1996	310	9.5		36.4	32.4 (28.6,36.1)	22.2 (19.5,24.9)
1997	324	9.9		37.9	32.1 (28.4,35.7)	22.1 (19.5,24.8)
1998	330	10.0		38.4	32.0 (28.4,35.6)	21.7 (19.1,24.3)
1999	358	10.7		41.6	35.2 (31.4,39.0)	23.7 (21.0,26.4)
2000	342	10.1		39.7	34.3 (30.6,38.1)	23.6 (20.9,26.3)
2001	320	9.7		37.0	31.2 (27.6,34.8)	21.2 (18.7,23.8)
2002	367	10.5		42.3	34.5 (30.8,38.1)	23.0 (20.4,25.6)
2003	361	10.1		41.5	34.4 (30.7,38.1)	23.6 (21.0,26.3)
2004	380	10.4		43.5	34.6 (30.9,38.2)	23.1 (20.5,25.6)
2005	393	10.8		44.7	35.6 (31.9,39.3)	23.8 (21.2,26.3)
2006	369	10.0		41.5	33.5 (29.9,37.0)	22.6 (20.1,25.1)
2007	422	10.8		47.0	38.0 (34.2,41.8)	25.9 (23.2,28.5)
2008	383	9.6		42.4	33.7 (30.2,37.2)	23.0 (20.5,25.5)

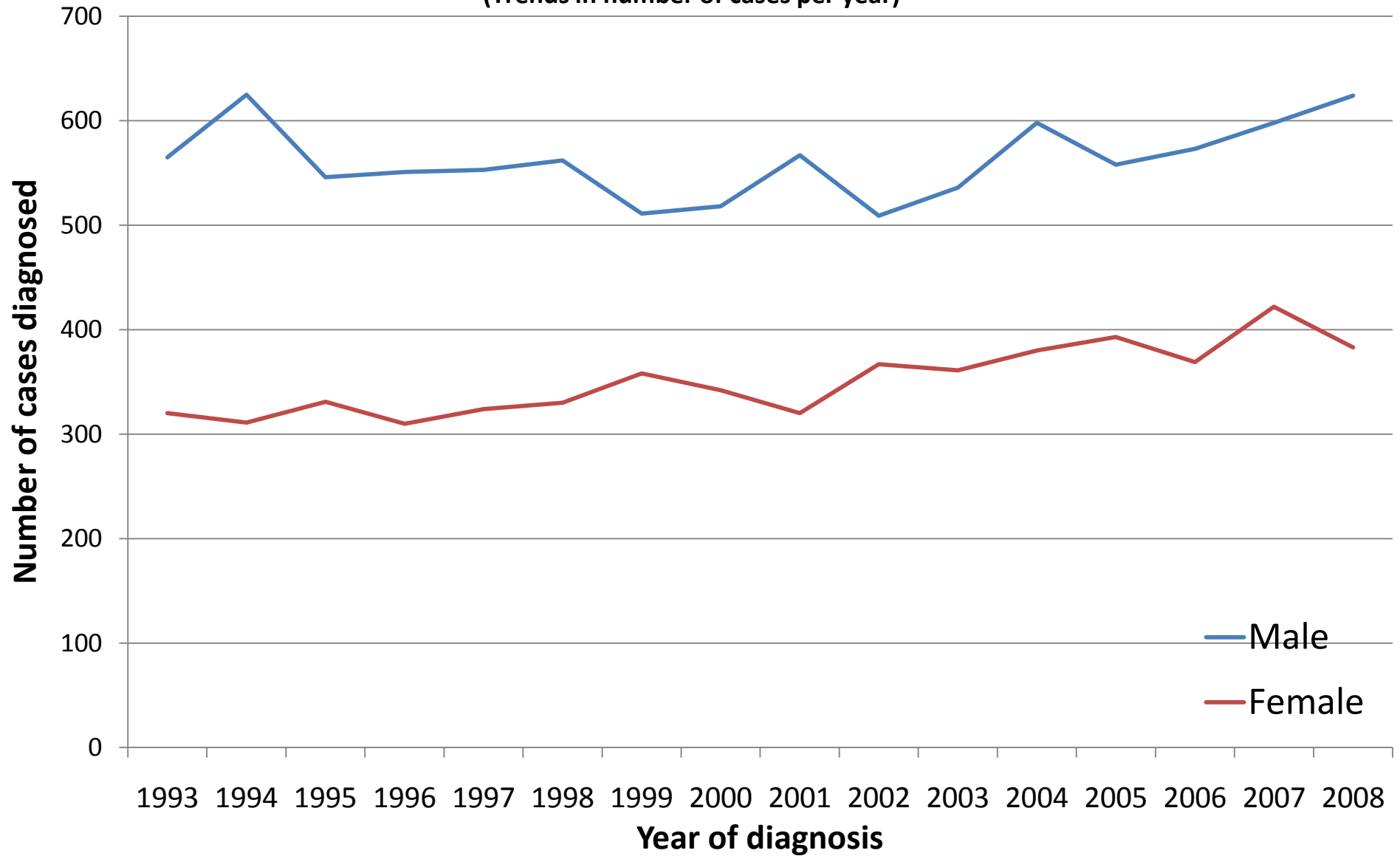
All persons

Year of diagnosis	Number of cases	Percentage of all cancers ex.		Crude rate per 100,000 persons	European age standardised incidence rate per 100,000 persons (95% CI)	World age standardised incidence rate per 100,000 persons (95% CI)
		NMSC				
1993	885	14.0		54.1	52.5 (49.0,56.0)	36.0 (33.5,38.5)
1994	936	15.0		56.9	55.9 (52.2,59.6)	38.5 (35.9,41.1)
1995	877	14.1		53.2	50.5 (47.1,54.0)	34.2 (31.8,36.6)
1996	861	13.4		51.8	49.2 (45.9,52.6)	33.3 (31.0,35.7)
1997	877	13.9		52.5	49.4 (46.0,52.7)	33.6 (31.2,35.9)
1998	892	13.9		53.2	49.0 (45.7,52.3)	33.0 (30.7,35.4)
1999	869	13.7		51.8	47.4 (44.2,50.7)	31.7 (29.4,33.9)
2000	860	13.2		51.1	47.6 (44.4,50.9)	32.3 (30.0,34.6)
2001	887	13.5		52.5	47.8 (44.6,51.0)	32.3 (30.1,34.6)
2002	876	12.9		51.6	46.1 (43.0,49.2)	30.7 (28.6,32.9)
2003	897	12.7		52.7	46.6 (43.5,49.7)	31.3 (29.1,33.5)
2004	978	13.6		57.2	49.2 (46.1,52.4)	32.5 (30.3,34.7)
2005	951	13.1		55.1	47.7 (44.6,50.8)	31.8 (29.6,33.9)
2006	942	12.6		54.1	46.6 (43.6,49.6)	31.3 (29.2,33.4)
2007	1,020	12.9		58.0	49.7 (46.6,52.9)	33.4 (31.2,35.5)
2008	1,007	12.5		56.7	47.5 (44.5,50.5)	31.6 (29.5,33.7)

NOTES:

NMSC: Non-melanoma skin cancer
CI: Confidence interval

Lung (C33,C34) (Trends in number of cases per year)



Lung (C33,C34)

(Trends in age-standardised incidence rates)

