

**Number of cases and incidence rates by sex and year of diagnosis**  
**Non-Hodgkin's lymphoma (C82-C85,C96)**

<b>Male</b>						
<b>Year of diagnosis</b>	<b>Number of cases</b>	<b>Percentage of all cancers ex.</b>		<b>Crude rate per 100,000 males</b>	<b>European age standardised incidence rate per 100,000 males (95% CI)</b>	<b>World age standardised incidence rate per 100,000 males (95% CI)</b>
		<b>NMSC</b>	<b>NMSC</b>			
1993	135	4.3	16.9	18.5 (15.3,21.6)	13.6 (11.2,15.9)	
1994	105	3.4	13.1	14.5 (11.7,17.3)	10.6 (8.5,12.7)	
1995	121	4.0	15.0	16.7 (13.7,19.7)	12.0 (9.8,14.1)	
1996	125	4.0	15.4	16.6 (13.7,19.5)	11.9 (9.8,14.1)	
1997	127	4.2	15.6	16.6 (13.7,19.5)	11.9 (9.8,14.1)	
1998	119	3.8	14.5	15.7 (12.9,18.6)	11.5 (9.3,13.6)	
1999	113	3.8	13.8	14.5 (11.8,17.2)	10.7 (8.7,12.8)	
2000	136	4.4	16.6	17.3 (14.4,20.2)	12.7 (10.4,14.9)	
2001	117	3.6	14.2	14.6 (11.9,17.2)	10.5 (8.5,12.5)	
2002	128	3.9	15.4	16.1 (13.3,18.9)	11.8 (9.7,13.9)	
2003	132	3.8	15.8	16.1 (13.3,18.9)	11.6 (9.5,13.6)	
2004	137	3.9	16.4	16.2 (13.4,18.9)	11.1 (9.2,13.0)	
2005	130	3.6	15.4	14.9 (12.3,17.4)	10.6 (8.7,12.5)	
2006	139	3.7	16.3	15.9 (13.2,18.6)	11.3 (9.3,13.3)	
2007	137	3.4	15.9	15.6 (13.0,18.3)	11.6 (9.5,13.6)	
2008	169	4.1	19.4	18.7 (15.8,21.5)	13.4 (11.3,15.5)	

<b>Female</b>						
<b>Year of diagnosis</b>	<b>Number of cases</b>	<b>Percentage of all cancers ex.</b>		<b>Crude rate per 100,000 females</b>	<b>European age standardised incidence rate per 100,000 females (95% CI)</b>	<b>World age standardised incidence rate per 100,000 females (95% CI)</b>
		<b>NMSC</b>	<b>NMSC</b>			
1993	105	3.3	12.5	11.5 (9.2,13.8)	8.4 (6.6,10.2)	
1994	117	3.8	13.9	12.8 (10.3,15.2)	9.0 (7.3,10.8)	
1995	97	3.1	11.5	10.0 (7.9,12.1)	7.0 (5.4,8.5)	
1996	123	3.8	14.4	12.5 (10.2,14.8)	9.0 (7.2,10.7)	
1997	117	3.6	13.7	11.8 (9.5,14.0)	8.3 (6.6,9.9)	
1998	143	4.3	16.6	15.3 (12.7,18.0)	11.6 (9.4,13.7)	
1999	136	4.1	15.8	13.5 (11.1,15.9)	9.4 (7.7,11.1)	
2000	137	4.0	15.9	14.2 (11.7,16.6)	10.3 (8.4,12.2)	
2001	140	4.3	16.2	13.7 (11.3,16.1)	9.6 (7.8,11.4)	
2002	125	3.6	14.4	12.3 (10.0,14.5)	8.7 (7.0,10.4)	
2003	131	3.7	15.1	12.4 (10.2,14.6)	8.6 (7.0,10.2)	
2004	144	3.9	16.5	13.1 (10.9,15.3)	9.2 (7.5,10.9)	
2005	139	3.8	15.8	12.9 (10.7,15.2)	9.2 (7.5,10.8)	
2006	119	3.2	13.4	11.0 (8.9,13.1)	7.7 (6.2,9.3)	
2007	166	4.3	18.5	16.0 (13.5,18.6)	11.6 (9.7,13.5)	
2008	137	3.4	15.2	12.1 (10.0,14.3)	8.6 (7.0,10.3)	

<b>All persons</b>						
<b>Year of diagnosis</b>	<b>Number of cases</b>	<b>Percentage of all cancers ex.</b>		<b>Crude rate per 100,000 persons</b>	<b>European age standardised incidence rate per 100,000 persons (95% CI)</b>	<b>World age standardised incidence rate per 100,000 persons (95% CI)</b>
		<b>NMSC</b>	<b>NMSC</b>			
1993	240	3.8	14.7	14.6 (12.7,16.5)	10.8 (9.3,12.2)	
1994	222	3.6	13.5	13.5 (11.7,15.4)	9.8 (8.4,11.2)	
1995	218	3.5	13.2	13.0 (11.3,14.8)	9.3 (8.0,10.6)	
1996	248	3.9	14.9	14.3 (12.5,16.1)	10.3 (8.9,11.7)	
1997	244	3.9	14.6	14.0 (12.2,15.8)	10.0 (8.6,11.3)	
1998	262	4.1	15.6	15.5 (13.6,17.4)	11.5 (10.0,13.0)	
1999	249	3.9	14.8	14.1 (12.3,15.9)	10.1 (8.8,11.5)	
2000	273	4.2	16.2	15.6 (13.7,17.5)	11.4 (10.0,12.9)	
2001	257	3.9	15.2	14.2 (12.4,16.0)	10.1 (8.8,11.4)	
2002	253	3.7	14.9	14.1 (12.3,15.8)	10.2 (8.8,11.5)	
2003	263	3.7	15.4	14.1 (12.4,15.9)	10.0 (8.7,11.3)	
2004	281	3.9	16.4	14.5 (12.8,16.3)	10.1 (8.8,11.3)	
2005	269	3.7	15.6	13.9 (12.2,15.6)	9.9 (8.6,11.1)	
2006	258	3.5	14.8	13.2 (11.5,14.8)	9.4 (8.1,10.6)	
2007	303	3.8	17.2	15.8 (14.0,17.6)	11.6 (10.2,13.0)	
2008	306	3.8	17.2	15.2 (13.5,16.9)	10.9 (9.6,12.2)	

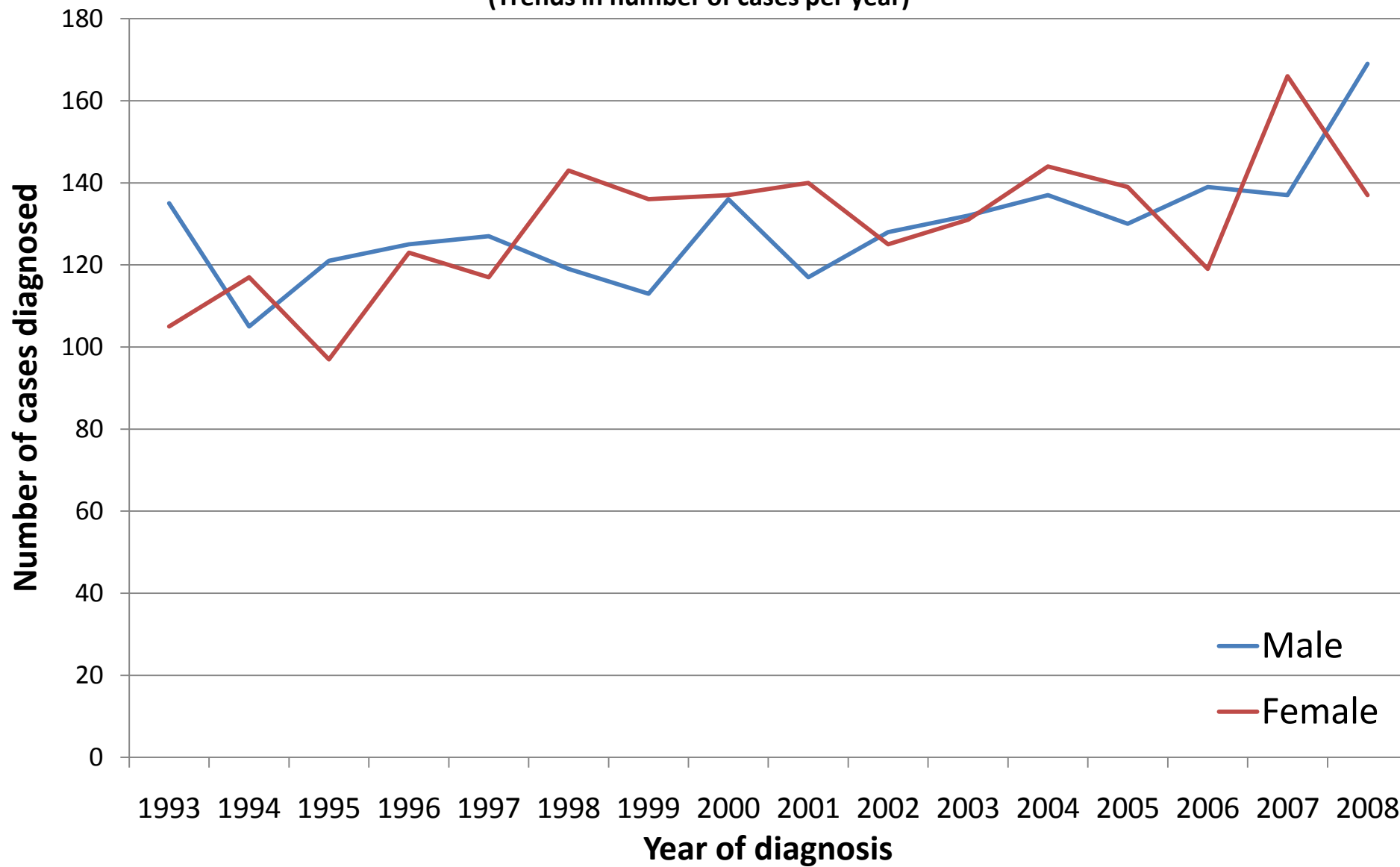
**NOTES:**

NMSC: Non-melanoma skin cancer

CI: Confidence interval

# Non-Hodgkin's lymphoma (C82-C85,C96)

(Trends in number of cases per year)



# Non-Hodgkin's lymphoma (C82-C85,C96)

(Trends in age-standardised incidence rates)

