

**Number of cases and incidence rates by sex and year of diagnosis
Non-melanoma skin (C44)**

Male

Year of diagnosis	Number of cases	Crude rate per 100,000 males	European age standardised incidence rate per 100,000 males (95% CI)	World age standardised incidence rate per 100,000 males (95% CI)
1993	995	124.7	139.0 (130.2,147.7)	91.7 (85.8,97.6)
1994	1,058	131.9	145.8 (136.9,154.7)	96.4 (90.4,102.4)
1995	1,023	127.2	140.2 (131.5,148.9)	93.1 (87.2,99.0)
1996	1,075	132.7	143.9 (135.2,152.6)	95.8 (89.9,101.8)
1997	1,123	137.7	148.3 (139.6,157.1)	97.5 (91.6,103.5)
1998	1,107	135.2	144.3 (135.7,152.9)	94.4 (88.6,100.1)
1999	1,188	145.1	151.4 (142.7,160.0)	99.2 (93.3,105.0)
2000	1,162	141.6	147.1 (138.5,155.6)	96.5 (90.8,102.3)
2001	1,126	136.6	139.8 (131.6,148.0)	91.5 (85.9,97.0)
2002	1,284	154.9	155.6 (147.1,164.2)	102.8 (97.0,108.6)
2003	1,287	154.5	153.6 (145.1,162.1)	102.3 (96.5,108.1)
2004	1,211	144.8	141.3 (133.3,149.4)	92.4 (87.0,97.8)
2005	1,278	151.4	144.7 (136.7,152.7)	95.7 (90.2,101.2)
2006	1,457	170.7	162.5 (154.1,170.9)	107.4 (101.7,113.1)
2007	1,466	170.1	160.4 (152.1,168.7)	105.8 (100.2,111.4)
2008	1,711	196.5	182.5 (173.8,191.2)	119.4 (113.5,125.2)

Female

Year of diagnosis	Number of cases	Crude rate per 100,000 females	European age standardised incidence rate per 100,000 females (95% CI)	World age standardised incidence rate per 100,000 females (95% CI)
1993	1,086	129.7	106.0 (99.3,112.7)	71.2 (66.5,76.0)
1994	1,036	123.1	100.9 (94.3,107.4)	68.2 (63.5,72.9)
1995	1,032	122.1	98.4 (92.1,104.8)	65.8 (61.3,70.3)
1996	1,159	136.1	109.2 (102.5,115.9)	72.6 (67.9,77.3)
1997	1,071	125.2	99.7 (93.4,106.0)	67.2 (62.6,71.7)
1998	1,058	123.2	98.1 (91.9,104.4)	66.3 (61.8,70.8)
1999	1,063	123.5	99.5 (93.2,105.8)	67.0 (62.4,71.5)
2000	1,045	121.2	96.2 (90.0,102.3)	64.6 (60.2,69.0)
2001	1,028	118.9	93.2 (87.1,99.2)	62.2 (57.9,66.5)
2002	1,089	125.5	95.1 (89.1,101.1)	62.7 (58.5,66.9)
2003	1,123	129.1	97.9 (91.8,103.9)	65.6 (61.2,69.9)
2004	1,062	121.5	90.9 (85.1,96.7)	60.5 (56.4,64.6)
2005	1,120	127.3	98.2 (92.1,104.2)	66.5 (62.2,70.9)
2006	1,259	141.7	106.4 (100.2,112.6)	71.4 (67.0,75.9)
2007	1,315	146.6	110.3 (104.0,116.5)	74.6 (70.0,79.1)
2008	1,421	157.2	117.1 (110.6,123.5)	78.9 (74.3,83.5)

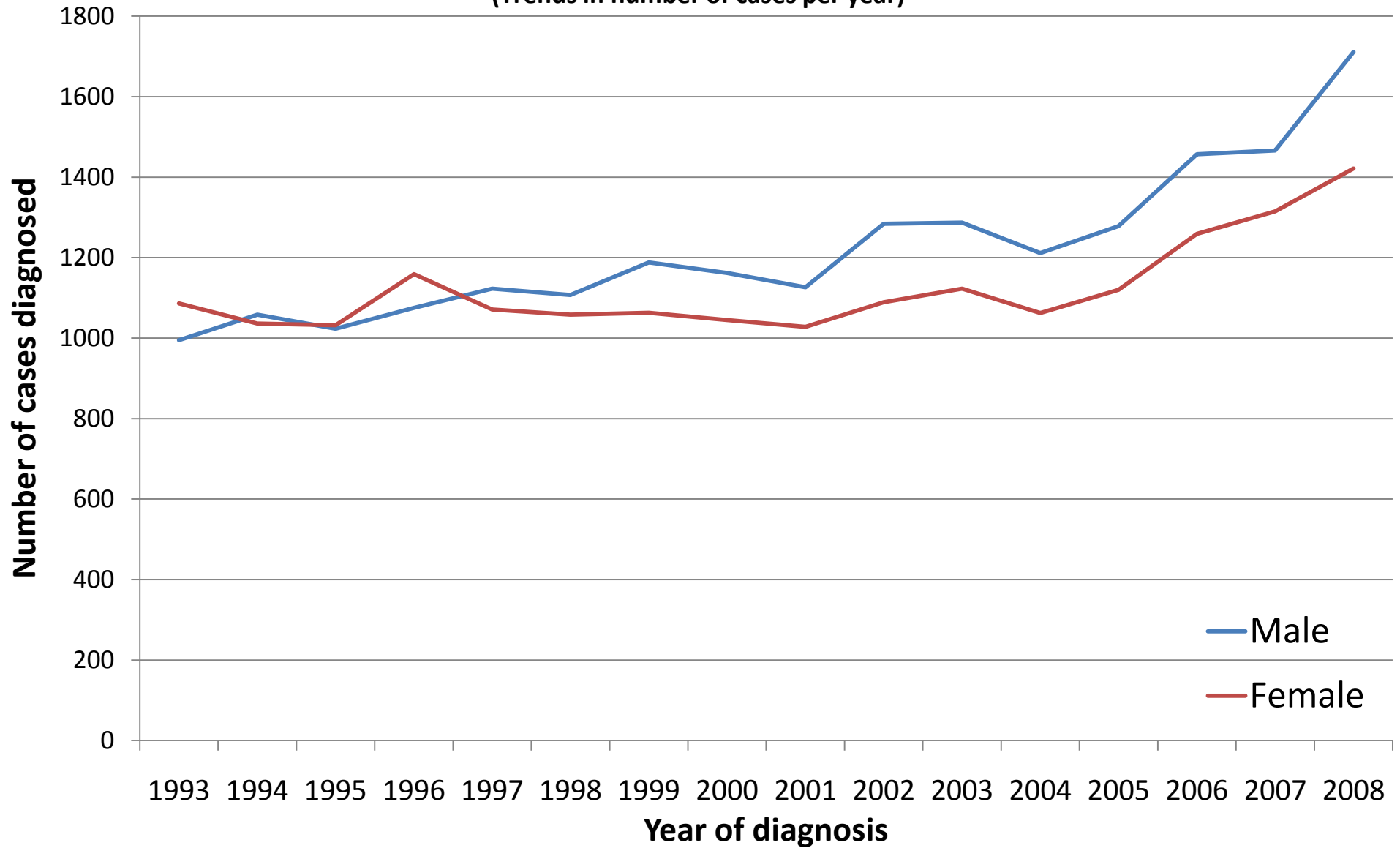
All persons

Year of diagnosis	Number of cases	Crude rate per 100,000 persons	European age standardised incidence rate per 100,000 persons (95% CI)	World age standardised incidence rate per 100,000 persons (95% CI)
1993	2,081	127.2	119.4 (114.1,124.7)	79.7 (76.0,83.4)
1994	2,094	127.4	118.9 (113.7,124.2)	79.8 (76.1,83.5)
1995	2,055	124.6	115.8 (110.7,121.0)	77.5 (73.9,81.1)
1996	2,234	134.4	124.1 (118.8,129.4)	82.7 (79.0,86.5)
1997	2,194	131.3	119.9 (114.7,125.0)	80.0 (76.4,83.6)
1998	2,165	129.0	116.9 (111.9,122.0)	78.0 (74.5,81.6)
1999	2,251	134.1	120.7 (115.6,125.8)	80.4 (76.8,84.0)
2000	2,207	131.1	117.2 (112.2,122.2)	78.1 (74.6,81.6)
2001	2,154	127.5	112.4 (107.5,117.2)	74.6 (71.2,78.0)
2002	2,373	139.9	121.6 (116.5,126.6)	80.6 (77.1,84.1)
2003	2,410	141.5	122.5 (117.5,127.5)	82.1 (78.5,85.6)
2004	2,273	132.9	112.2 (107.4,116.9)	74.3 (71.0,77.6)
2005	2,398	139.1	118.2 (113.4,123.1)	79.3 (75.9,82.8)
2006	2,716	155.9	130.6 (125.6,135.6)	87.3 (83.7,90.8)
2007	2,781	158.1	131.9 (126.8,136.9)	88.3 (84.8,91.8)
2008	3,132	176.5	145.1 (139.8,150.3)	96.6 (92.9,100.2)

NOTES:

CI: Confidence interval

Non-melanoma skin (C44) (Trends in number of cases per year)



Non-melanoma skin (C44) (Trends in age-standardised incidence rates)

