

## Number of cases and incidence rates by sex and year of diagnosis

### Oral (C00-C14)

#### Male

Year of diagnosis	Number of cases	Percentage of all cancers ex.		Crude rate per 100,000 males	European age standardised incidence rate per 100,000 males (95% CI)	World age standardised incidence rate per 100,000 males (95% CI)
		NMSC				
1993	107	3.4		13.4	15.2 (12.3,18.1)	10.7 (8.6,12.8)
1994	106	3.4		13.2	14.5 (11.7,17.3)	10.0 (8.1,12.0)
1995	101	3.3		12.6	14.4 (11.6,17.3)	10.2 (8.1,12.2)
1996	103	3.3		12.7	14.2 (11.4,16.9)	10.0 (8.0,12.0)
1997	104	3.4		12.8	14.3 (11.6,17.1)	10.1 (8.1,12.1)
1998	83	2.7		10.1	11.0 (8.6,13.4)	7.4 (5.7,9.0)
1999	90	3.0		11.0	11.9 (9.4,14.4)	8.2 (6.5,9.9)
2000	82	2.6		10.0	10.7 (8.4,13.0)	7.5 (5.8,9.2)
2001	89	2.7		10.8	11.6 (9.2,14.0)	8.2 (6.5,9.9)
2002	88	2.7		10.6	11.1 (8.8,13.4)	7.9 (6.2,9.6)
2003	83	2.4		10.0	9.9 (7.8,12.1)	6.8 (5.3,8.3)
2004	108	3.0		12.9	13.3 (10.7,15.8)	9.5 (7.6,11.3)
2005	92	2.6		10.9	11.1 (8.8,13.3)	8.1 (6.4,9.7)
2006	123	3.3		14.4	14.0 (11.5,16.4)	9.6 (7.9,11.4)
2007	126	3.1		14.6	14.4 (11.9,16.9)	10.2 (8.3,12.0)
2008	102	2.5		11.7	11.5 (9.2,13.7)	8.2 (6.6,9.8)

#### Female

Year of diagnosis	Number of cases	Percentage of all cancers ex.		Crude rate per 100,000 females	European age standardised incidence rate per 100,000 females (95% CI)	World age standardised incidence rate per 100,000 females (95% CI)
		NMSC				
1993	54	1.7		6.4	5.3 (3.8,6.8)	3.7 (2.6,4.8)
1994	47	1.5		5.6	4.7 (3.3,6.2)	3.4 (2.3,4.5)
1995	51	1.6		6.0	5.8 (4.1,7.4)	4.2 (2.9,5.4)
1996	50	1.5		5.9	5.0 (3.6,6.5)	3.6 (2.5,4.7)
1997	44	1.3		5.1	4.4 (3.0,5.8)	3.2 (2.1,4.2)
1998	40	1.2		4.7	3.9 (2.6,5.2)	2.7 (1.8,3.6)
1999	56	1.7		6.5	5.8 (4.2,7.4)	4.0 (2.9,5.2)
2000	41	1.2		4.8	4.4 (3.0,5.8)	3.1 (2.1,4.1)
2001	40	1.2		4.6	3.8 (2.6,5.1)	2.6 (1.7,3.5)
2002	42	1.2		4.8	4.1 (2.8,5.4)	2.8 (1.9,3.8)
2003	48	1.3		5.5	5.0 (3.5,6.4)	3.5 (2.4,4.6)
2004	47	1.3		5.4	4.8 (3.4,6.2)	3.4 (2.4,4.5)
2005	63	1.7		7.2	5.9 (4.4,7.5)	4.2 (3.0,5.3)
2006	63	1.7		7.1	5.9 (4.4,7.5)	4.4 (3.2,5.6)
2007	59	1.5		6.6	5.9 (4.4,7.5)	4.4 (3.2,5.6)
2008	55	1.4		6.1	5.2 (3.7,6.6)	3.7 (2.7,4.8)

#### All persons

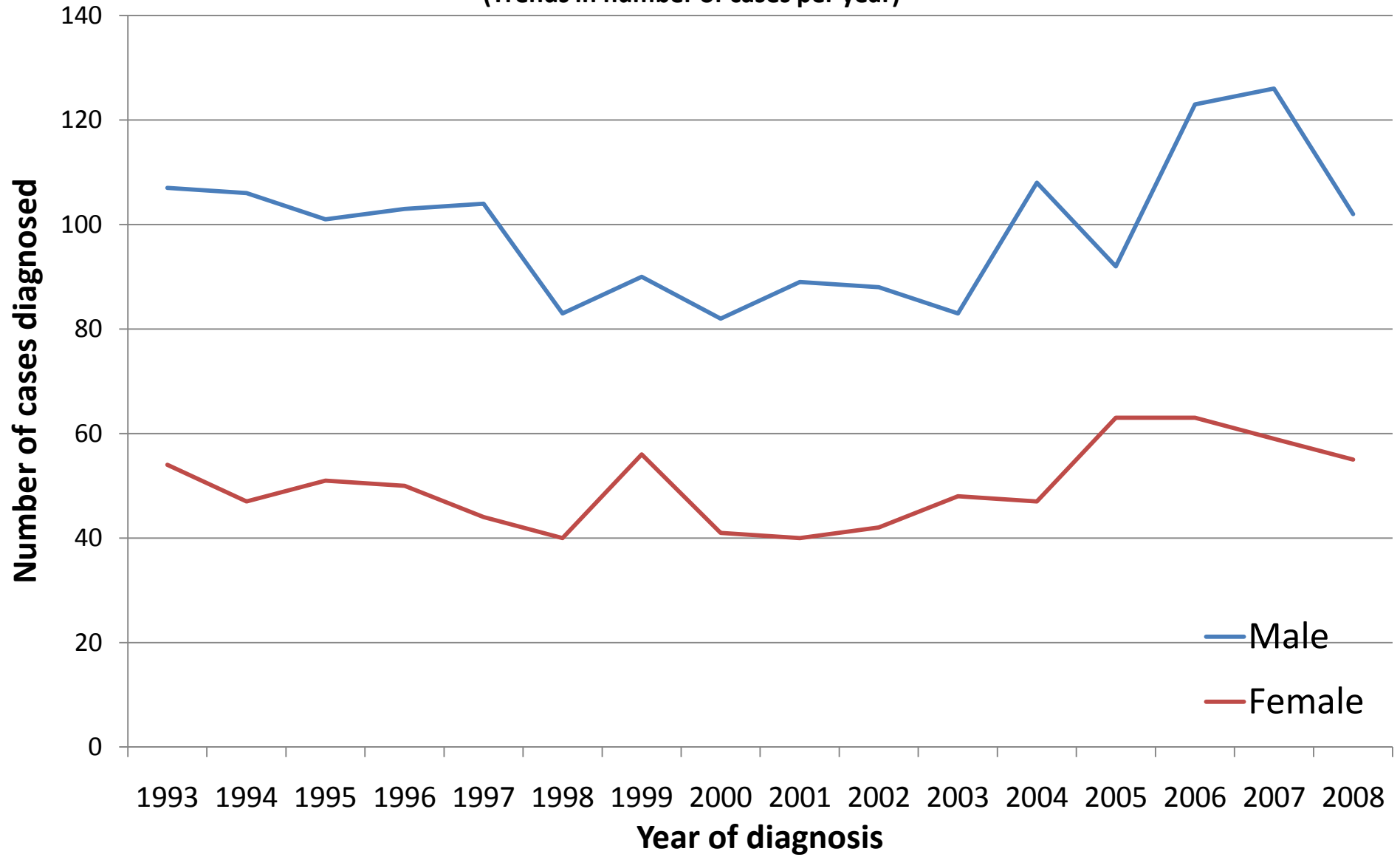
Year of diagnosis	Number of cases	Percentage of all cancers ex.		Crude rate per 100,000 persons	European age standardised incidence rate per 100,000 persons (95% CI)	World age standardised incidence rate per 100,000 persons (95% CI)
		NMSC				
1993	161	2.6		9.8	9.7 (8.2,11.3)	6.9 (5.7,8.0)
1994	153	2.5		9.3	9.0 (7.5,10.5)	6.3 (5.3,7.4)
1995	152	2.4		9.2	9.6 (8.0,11.1)	6.8 (5.7,8.0)
1996	153	2.4		9.2	9.1 (7.6,10.5)	6.5 (5.4,7.6)
1997	148	2.3		8.9	8.9 (7.4,10.3)	6.4 (5.3,7.5)
1998	123	1.9		7.3	7.1 (5.8,8.3)	4.8 (3.9,5.7)
1999	146	2.3		8.7	8.5 (7.1,9.9)	5.9 (4.9,6.9)
2000	123	1.9		7.3	7.3 (6.0,8.6)	5.1 (4.2,6.1)
2001	129	2.0		7.6	7.4 (6.1,8.7)	5.2 (4.3,6.2)
2002	130	1.9		7.7	7.3 (6.0,8.6)	5.2 (4.2,6.1)
2003	131	1.9		7.7	7.2 (5.9,8.4)	5.0 (4.1,5.9)
2004	155	2.2		9.1	8.7 (7.3,10.1)	6.3 (5.2,7.3)
2005	155	2.1		9.0	8.4 (7.1,9.8)	6.0 (5.0,7.0)
2006	186	2.5		10.7	9.6 (8.2,11.0)	6.8 (5.7,7.8)
2007	185	2.3		10.5	9.8 (8.3,11.2)	7.1 (6.0,8.1)
2008	157	1.9		8.8	8.1 (6.8,9.4)	5.8 (4.9,6.8)

#### NOTES:

NMSC: Non-melanoma skin cancer

CI: Confidence interval

**Oral (C00-C14)**  
(Trends in number of cases per year)



**Oral (C00-C14)**  
**(Trends in age-standardised incidence rates)**

