

**Number of cases and incidence rates by sex and year of diagnosis  
Rectum (C19-C21)**

**Male**

Year of diagnosis	Number of cases	Percentage of all cancers ex.		Crude rate per 100,000 males	European age standardised incidence rate per 100,000 males (95% CI)	World age standardised incidence rate per 100,000 males (95% CI)
		NMSC				
1993	184	5.9		23.1	25.8 (22.0,29.5)	17.7 (15.1,20.4)
1994	177	5.7		22.1	24.1 (20.5,27.7)	16.3 (13.8,18.8)
1995	175	5.7		21.8	23.8 (20.2,27.4)	16.0 (13.5,18.4)
1996	188	6.0		23.2	24.8 (21.2,28.3)	16.7 (14.2,19.2)
1997	157	5.2		19.3	20.8 (17.5,24.1)	13.9 (11.6,16.1)
1998	187	6.0		22.8	24.3 (20.8,27.8)	16.2 (13.8,18.6)
1999	158	5.3		19.3	20.1 (16.9,23.2)	13.5 (11.4,15.7)
2000	184	5.9		22.4	23.5 (20.1,27.0)	16.0 (13.6,18.3)
2001	214	6.5		26.0	26.7 (23.1,30.3)	18.1 (15.6,20.6)
2002	165	5.0		19.9	20.3 (17.1,23.4)	13.7 (11.5,15.8)
2003	246	7.1		29.5	29.7 (25.9,33.4)	20.2 (17.6,22.8)
2004	214	6.0		25.6	25.5 (22.0,28.9)	17.6 (15.2,20.0)
2005	217	6.0		25.7	25.3 (21.9,28.7)	17.4 (15.0,19.8)
2006	213	5.7		25.0	24.3 (21.0,27.6)	16.6 (14.3,18.9)
2007	251	6.2		29.1	27.8 (24.4,31.3)	19.3 (16.8,21.8)
2008	222	5.4		25.5	24.3 (21.1,27.5)	16.7 (14.4,19.0)

**Female**

Year of diagnosis	Number of cases	Percentage of all cancers ex.		Crude rate per 100,000 females	European age standardised incidence rate per 100,000 females (95% CI)	World age standardised incidence rate per 100,000 females (95% CI)
		NMSC				
1993	129	4.0		15.4	13.1 (10.7,15.5)	8.8 (7.1,10.6)
1994	122	3.9		14.5	11.9 (9.6,14.1)	7.9 (6.3,9.4)
1995	149	4.7		17.6	14.6 (12.1,17.1)	9.7 (8.0,11.5)
1996	157	4.8		18.4	15.0 (12.5,17.5)	10.1 (8.3,11.9)
1997	145	4.4		16.9	13.7 (11.4,16.1)	9.1 (7.5,10.8)
1998	118	3.6		13.7	11.9 (9.7,14.2)	8.2 (6.6,9.8)
1999	123	3.7		14.3	11.6 (9.5,13.8)	7.8 (6.3,9.3)
2000	152	4.5		17.6	14.9 (12.4,17.4)	10.3 (8.5,12.1)
2001	155	4.7		17.9	15.3 (12.8,17.8)	10.6 (8.8,12.4)
2002	134	3.8		15.4	12.9 (10.6,15.2)	8.8 (7.2,10.5)
2003	143	4.0		16.4	12.4 (10.2,14.6)	8.3 (6.8,9.9)
2004	155	4.3		17.7	14.4 (12.1,16.8)	10.0 (8.2,11.7)
2005	144	3.9		16.4	13.3 (11.0,15.5)	9.1 (7.5,10.7)
2006	151	4.1		17.0	13.2 (11.0,15.4)	8.8 (7.3,10.4)
2007	134	3.4		14.9	11.8 (9.7,13.9)	8.0 (6.5,9.5)
2008	140	3.5		15.5	12.5 (10.3,14.6)	8.6 (7.1,10.2)

**All persons**

Year of diagnosis	Number of cases	Percentage of all cancers ex.		Crude rate per 100,000 persons	European age standardised incidence rate per 100,000 persons (95% CI)	World age standardised incidence rate per 100,000 persons (95% CI)
		NMSC				
1993	313	5.0		19.1	18.6 (16.5,20.7)	12.8 (11.2,14.3)
1994	299	4.8		18.2	17.2 (15.2,19.2)	11.6 (10.2,13.0)
1995	324	5.2		19.6	18.6 (16.5,20.6)	12.5 (11.0,13.9)
1996	345	5.4		20.8	19.4 (17.3,21.5)	13.1 (11.6,14.6)
1997	302	4.8		18.1	16.8 (14.8,18.7)	11.2 (9.8,12.6)
1998	305	4.7		18.2	17.1 (15.2,19.1)	11.6 (10.2,13.0)
1999	281	4.4		16.7	15.2 (13.4,17.0)	10.3 (9.0,11.6)
2000	336	5.2		20.0	18.7 (16.6,20.7)	12.8 (11.3,14.3)
2001	369	5.6		21.8	20.3 (18.2,22.5)	14.0 (12.4,15.5)
2002	299	4.4		17.6	16.0 (14.2,17.9)	10.9 (9.6,12.3)
2003	389	5.5		22.8	20.3 (18.2,22.3)	13.8 (12.3,15.3)
2004	369	5.1		21.6	19.5 (17.5,21.5)	13.5 (12.0,14.9)
2005	361	5.0		20.9	18.7 (16.7,20.6)	12.9 (11.5,14.3)
2006	364	4.9		20.9	18.3 (16.4,20.3)	12.5 (11.1,13.8)
2007	385	4.9		21.9	19.3 (17.3,21.2)	13.3 (11.9,14.7)
2008	362	4.5		20.4	17.9 (16.0,19.8)	12.4 (11.1,13.8)

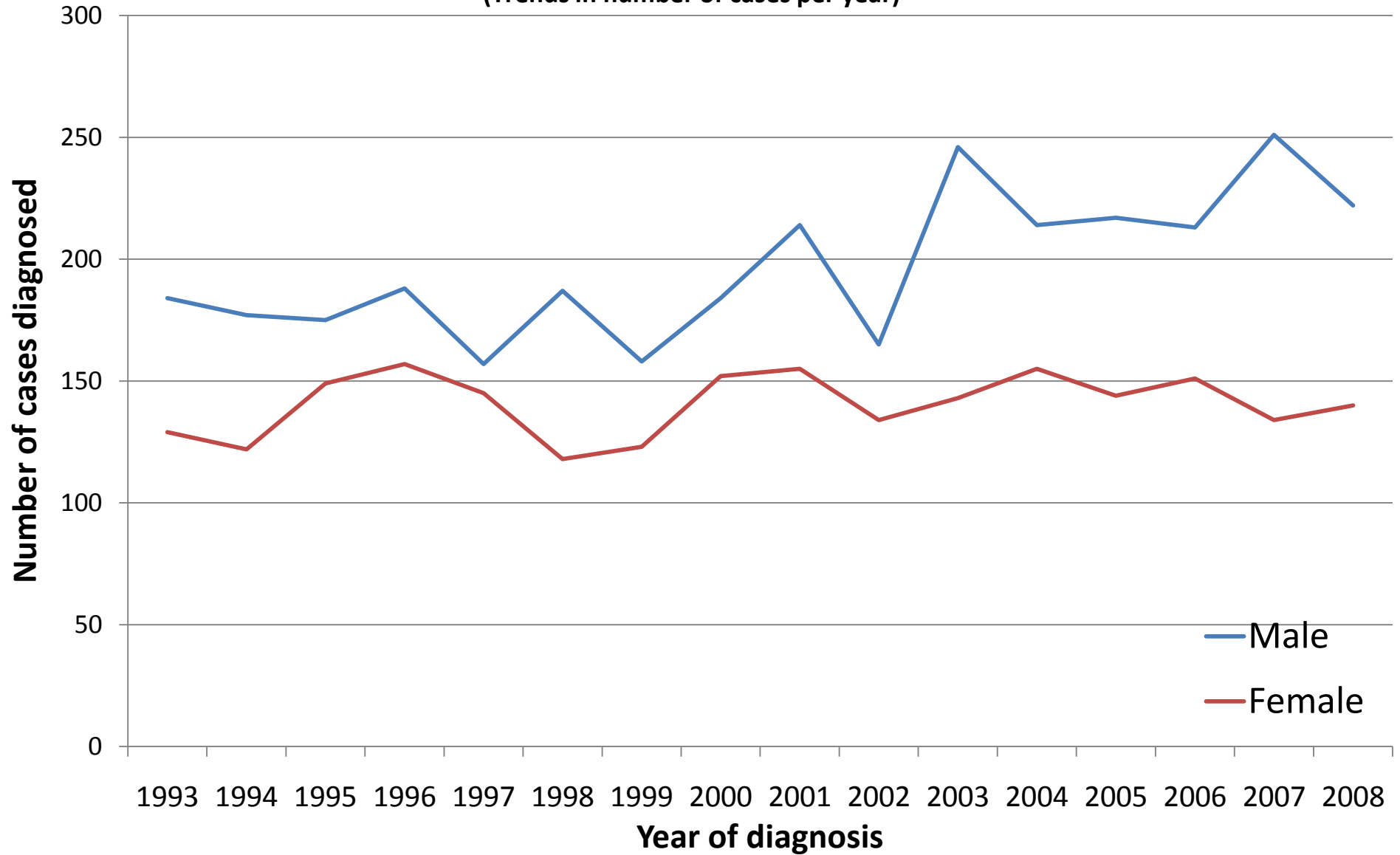
**NOTES:**

NMSC: Non-melanoma skin cancer

CI: Confidence interval

# Rectum (C19-C21)

(Trends in number of cases per year)



**Rectum (C19-C21)**  
(Trends in age-standardised incidence rates)

