

**Number of cases and incidence rates by sex and year of diagnosis**  
**Stomach (C16)**

**Male**

Year of diagnosis	Number of cases	Percentage of all cancers ex.		Crude rate per 100,000 males	European age standardised incidence rate per 100,000 males (95% CI)	World age standardised incidence rate per 100,000 males (95% CI)
		NMSC				
1993	153	4.9		19.2	21.2 (17.8,24.6)	14.3 (12.0,16.7)
1994	167	5.4		20.8	22.5 (19.0,26.0)	15.0 (12.6,17.3)
1995	155	5.1		19.3	21.3 (17.9,24.7)	14.0 (11.8,16.3)
1996	170	5.4		21.0	22.8 (19.4,26.3)	14.9 (12.6,17.3)
1997	143	4.7		17.5	18.9 (15.8,22.1)	12.5 (10.4,14.7)
1998	175	5.6		21.4	23.1 (19.6,26.5)	15.6 (13.2,18.0)
1999	157	5.2		19.2	19.9 (16.7,23.0)	13.0 (10.9,15.2)
2000	139	4.4		16.9	17.6 (14.6,20.5)	11.5 (9.5,13.5)
2001	148	4.5		18.0	17.7 (14.8,20.6)	11.6 (9.7,13.6)
2002	156	4.7		18.8	18.6 (15.7,21.6)	12.6 (10.5,14.6)
2003	170	4.9		20.4	20.3 (17.2,23.4)	13.4 (11.3,15.5)
2004	126	3.5		15.1	14.6 (12.0,17.1)	9.6 (7.9,11.4)
2005	125	3.5		14.8	13.7 (11.3,16.1)	8.6 (7.0,10.2)
2006	132	3.5		15.5	14.7 (12.2,17.2)	9.3 (7.7,10.9)
2007	135	3.4		15.7	14.5 (12.0,17.0)	9.3 (7.6,10.9)
2008	141	3.5		16.2	14.8 (12.3,17.2)	9.6 (8.0,11.3)

**Female**

Year of diagnosis	Number of cases	Percentage of all cancers ex.		Crude rate per 100,000 females	European age standardised incidence rate per 100,000 females (95% CI)	World age standardised incidence rate per 100,000 females (95% CI)
		NMSC				
1993	105	3.3		12.5	9.5 (7.6,11.5)	6.1 (4.8,7.4)
1994	96	3.1		11.4	8.9 (7.0,10.8)	5.7 (4.4,7.0)
1995	85	2.7		10.1	8.2 (6.4,10.1)	5.7 (4.3,7.1)
1996	117	3.6		13.7	10.6 (8.6,12.7)	7.1 (5.6,8.5)
1997	99	3.0		11.6	8.7 (6.9,10.5)	5.7 (4.4,6.9)
1998	99	3.0		11.5	8.8 (7.0,10.7)	5.8 (4.5,7.0)
1999	107	3.2		12.4	9.5 (7.6,11.4)	6.1 (4.8,7.4)
2000	92	2.7		10.7	8.2 (6.5,10.0)	5.4 (4.1,6.6)
2001	107	3.3		12.4	8.5 (6.8,10.2)	5.4 (4.2,6.6)
2002	99	2.8		11.4	8.4 (6.7,10.2)	5.5 (4.3,6.7)
2003	93	2.6		10.7	7.8 (6.2,9.5)	5.0 (3.9,6.2)
2004	81	2.2		9.3	6.5 (5.0,8.0)	4.2 (3.2,5.3)
2005	86	2.4		9.8	7.0 (5.5,8.6)	4.6 (3.5,5.7)
2006	98	2.6		11.0	7.8 (6.1,9.4)	5.0 (3.9,6.2)
2007	99	2.5		11.0	7.7 (6.1,9.4)	5.0 (3.9,6.1)
2008	93	2.3		10.3	7.3 (5.8,8.9)	4.9 (3.8,6.0)

**All persons**

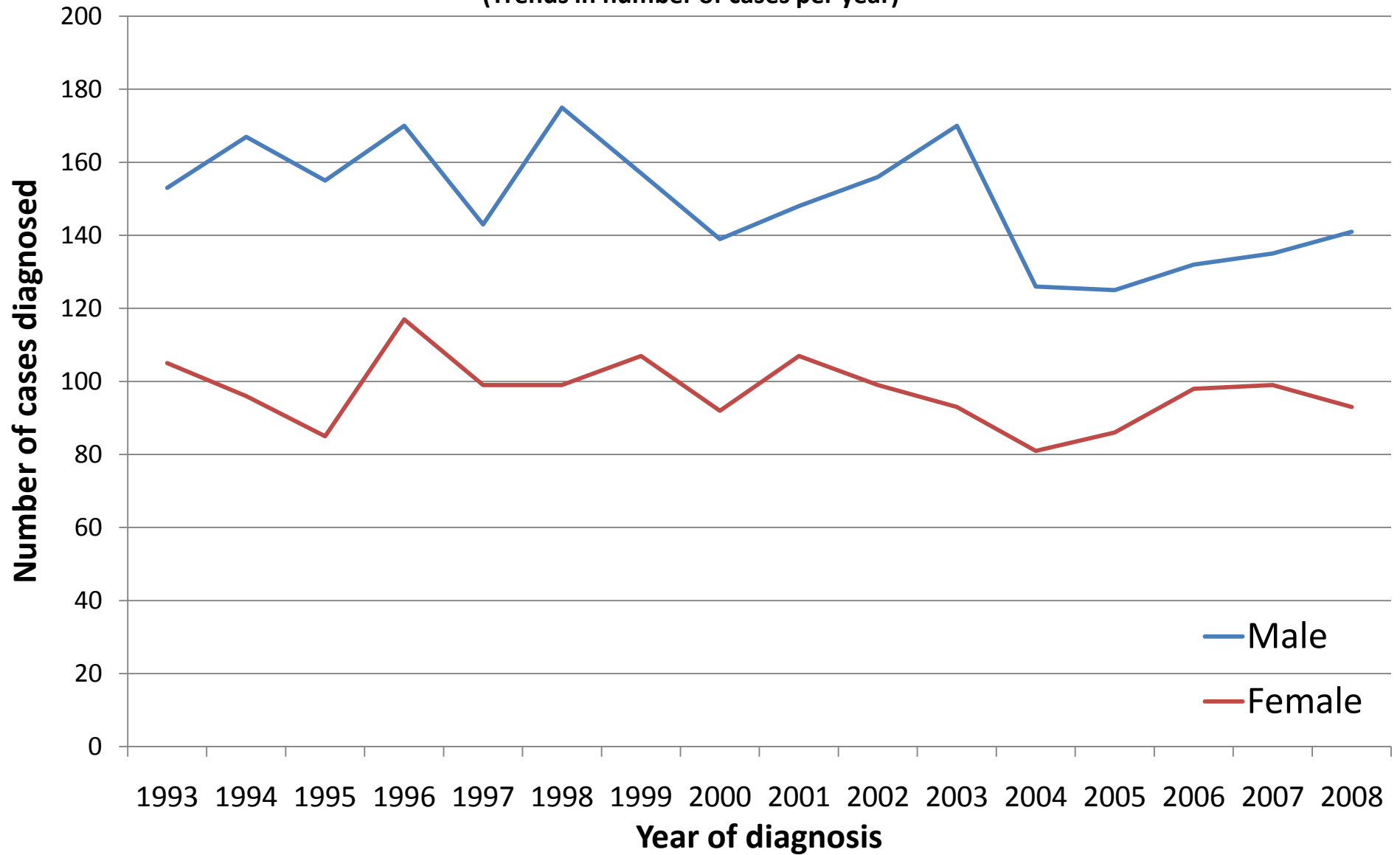
Year of diagnosis	Number of cases	Percentage of all cancers ex.		Crude rate per 100,000 persons	European age standardised incidence rate per 100,000 persons (95% CI)	World age standardised incidence rate per 100,000 persons (95% CI)
		NMSC				
1993	258	4.1		15.8	14.5 (12.7,16.3)	9.7 (8.4,10.9)
1994	263	4.2		16.0	14.8 (13.0,16.7)	9.8 (8.5,11.1)
1995	240	3.9		14.6	13.7 (11.9,15.5)	9.3 (8.0,10.5)
1996	287	4.5		17.3	15.8 (13.9,17.7)	10.5 (9.2,11.8)
1997	242	3.8		14.5	13.1 (11.4,14.8)	8.7 (7.5,9.9)
1998	274	4.3		16.3	15.3 (13.4,17.1)	10.3 (9.0,11.6)
1999	264	4.2		15.7	14.0 (12.3,15.8)	9.2 (8.0,10.4)
2000	231	3.5		13.7	12.2 (10.6,13.8)	8.1 (6.9,9.2)
2001	255	3.9		15.1	12.7 (11.1,14.3)	8.3 (7.2,9.4)
2002	255	3.7		15.0	13.1 (11.5,14.8)	8.8 (7.6,9.9)
2003	263	3.7		15.4	13.4 (11.7,15.1)	8.8 (7.7,10.0)
2004	207	2.9		12.1	10.2 (8.7,11.6)	6.7 (5.7,7.7)
2005	211	2.9		12.2	9.9 (8.5,11.2)	6.4 (5.4,7.3)
2006	230	3.1		13.2	10.7 (9.3,12.2)	6.9 (5.9,7.9)
2007	234	3.0		13.3	10.6 (9.2,12.0)	6.9 (5.9,7.8)
2008	234	2.9		13.2	10.6 (9.2,12.0)	7.0 (6.0,8.0)

**NOTES:**

NMSC: Non-melanoma skin cancer  
 CI: Confidence interval

# Stomach (C16)

(Trends in number of cases per year)



# Stomach (C16)

(Trends in age-standardised incidence rates)

