

## Number of cases and incidence rates by sex and year of diagnosis

### Testis (C62)

#### Male

Year of diagnosis	Number of cases	Percentage of all cancers ex. NMSC	Crude rate per 100,000 males	European age standardised incidence rate per 100,000 males (95% CI)	World age standardised incidence rate per 100,000 males (95% CI)
1993	55	1.8	6.9	6.9 (5.0,8.7)	6.3 (4.6,8.0)
1994	47	1.5	5.9	5.8 (4.1,7.4)	5.4 (3.8,7.0)
1995	39	1.3	4.9	4.8 (3.3,6.3)	4.6 (3.1,6.0)
1996	55	1.7	6.8	6.7 (4.9,8.5)	6.2 (4.5,7.8)
1997	48	1.6	5.9	5.8 (4.2,7.5)	5.5 (3.9,7.1)
1998	46	1.5	5.6	5.6 (3.9,7.2)	5.2 (3.7,6.7)
1999	56	1.9	6.8	6.9 (5.1,8.7)	6.3 (4.6,7.9)
2000	68	2.2	8.3	8.0 (6.1,10.0)	7.6 (5.7,9.4)
2001	52	1.6	6.3	6.2 (4.5,8.0)	5.7 (4.1,7.3)
2002	56	1.7	6.8	6.7 (5.0,8.5)	6.3 (4.6,8.0)
2003	56	1.6	6.7	6.7 (4.9,8.5)	6.3 (4.6,8.0)
2004	71	2.0	8.5	8.4 (6.4,10.3)	7.9 (6.0,9.7)
2005	63	1.7	7.5	7.6 (5.7,9.4)	7.2 (5.4,9.1)
2006	50	1.3	5.9	6.0 (4.3,7.6)	5.7 (4.1,7.3)
2007	56	1.4	6.5	6.4 (4.7,8.1)	6.0 (4.4,7.6)
2008	66	1.6	7.6	7.5 (5.7,9.3)	7.2 (5.5,9.0)

#### All persons

Year of diagnosis	Number of cases	Percentage of all cancers ex. NMSC	Crude rate per 100,000 persons	European age standardised incidence rate per 100,000 persons (95% CI)	World age standardised incidence rate per 100,000 persons (95% CI)
1993	55	0.9	3.4	3.4 (2.5,4.3)	3.1 (2.3,3.9)
1994	47	0.8	2.9	2.9 (2.0,3.7)	2.7 (1.9,3.5)
1995	39	0.6	2.4	2.4 (1.6,3.1)	2.3 (1.5,3.0)
1996	55	0.9	3.3	3.2 (2.4,4.1)	3.0 (2.2,3.8)
1997	48	0.8	2.9	2.9 (2.1,3.7)	2.8 (2.0,3.5)
1998	46	0.7	2.7	2.7 (1.9,3.5)	2.5 (1.8,3.3)
1999	56	0.9	3.3	3.3 (2.5,4.2)	3.1 (2.3,3.9)
2000	68	1.0	4.0	4.0 (3.0,4.9)	3.7 (2.8,4.7)
2001	52	0.8	3.1	3.1 (2.2,3.9)	2.8 (2.0,3.6)
2002	56	0.8	3.3	3.3 (2.5,4.2)	3.1 (2.3,3.9)
2003	56	0.8	3.3	3.3 (2.5,4.2)	3.2 (2.3,4.0)
2004	71	1.0	4.2	4.1 (3.2,5.1)	3.9 (3.0,4.8)
2005	63	0.9	3.7	3.8 (2.8,4.7)	3.6 (2.7,4.5)
2006	50	0.7	2.9	3.0 (2.1,3.8)	2.8 (2.0,3.6)
2007	56	0.7	3.2	3.2 (2.4,4.0)	3.0 (2.2,3.8)
2008	66	0.8	3.7	3.7 (2.8,4.6)	3.6 (2.7,4.5)

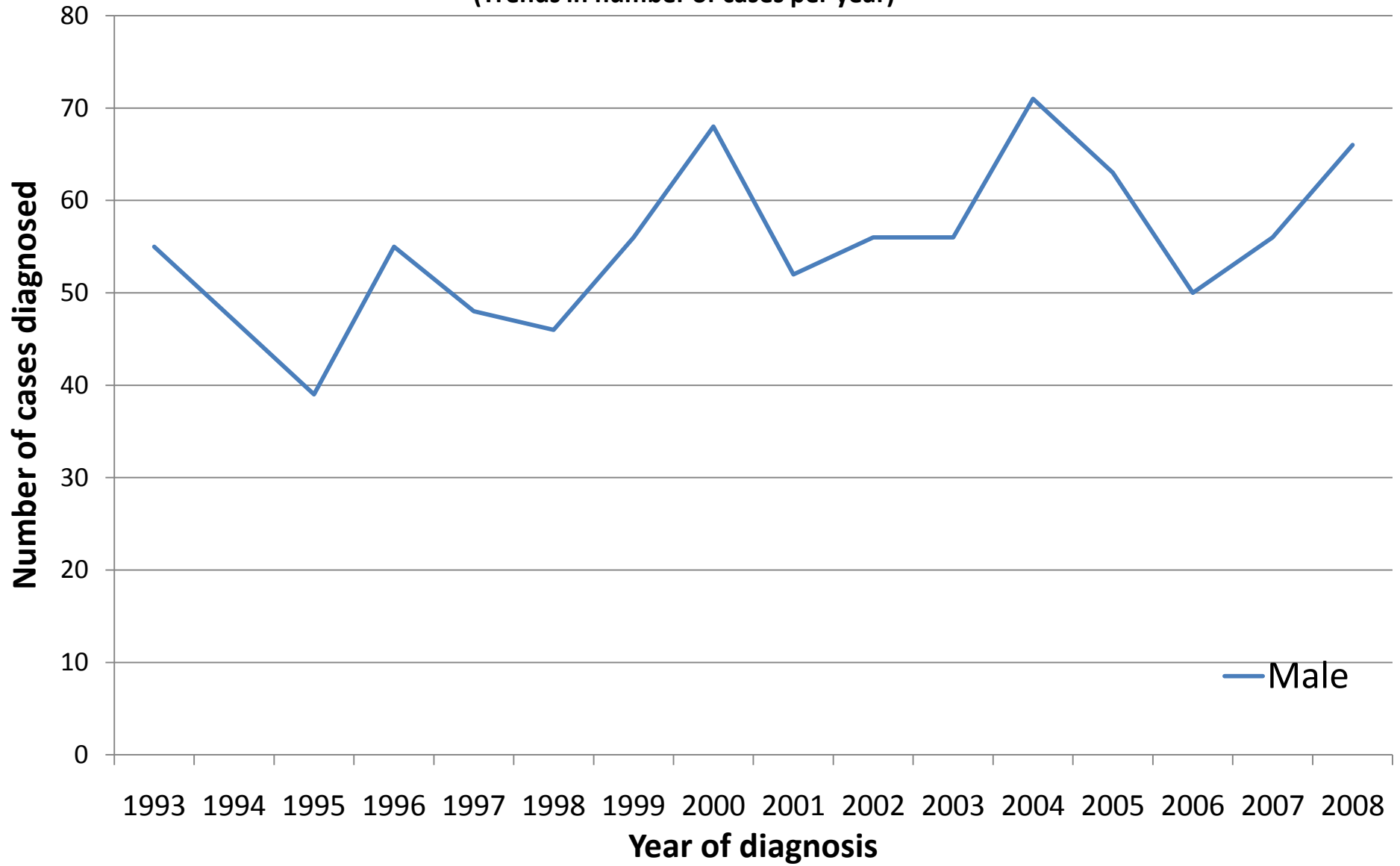
#### NOTES:

NMSC: Non-melanoma skin cancer

CI: Confidence interval

# Testis (C62)

(Trends in number of cases per year)



# Testis (C62)

(Trends in age-standardised incidence rates)

