

## Number of cases and incidence rates by sex: 2005-2009

### Oral (C00-C14)

Sex	Number of cases	Average number of cases per year	Percentage of all cancers ex. NMSC	Crude rate per 100,000	European age-standardised incidence rate per 100,000 (95% CI)	World age-standardised incidence rate per 100,000 (95% CI)	Odds of developing the disease before age 75 = 1 in:
Male	573	115	2.9	13.3	13.1 (12.0,14.2)	9.4 (8.6,10.2)	93.2
Female	310	62	1.6	6.9	5.9 (5.2,6.6)	4.3 (3.8,4.8)	207.1
All persons	883	177	2.2	10.0	9.3 (8.6,9.9)	6.7 (6.2,7.1)	130.3

#### NOTES:

NMSC: Non-melanoma skin cancer

CI: Confidence interval

## Number of cases and incidence rates by sex and year of diagnosis

### Oral (C00-C14)

#### Male

Year of diagnosis	Number of cases	Percentage of all cancers ex. NMSC	Crude rate per 100,000 males	European age standardised incidence rate per 100,000 males (95% CI)	World age standardised incidence rate per 100,000 males (95% CI)
1993	107	3.4	13.4	15.2 (12.3,18.1)	10.7 (8.6,12.8)
1994	106	3.4	13.2	14.5 (11.7,17.3)	10.0 (8.1,12.0)
1995	100	3.3	12.4	14.3 (11.4,17.1)	10.1 (8.1,12.1)
1996	103	3.3	12.7	14.2 (11.4,16.9)	10.0 (8.0,12.0)
1997	104	3.4	12.8	14.3 (11.6,17.1)	10.1 (8.1,12.1)
1998	83	2.7	10.1	11.0 (8.6,13.4)	7.4 (5.7,9.0)
1999	91	3.0	11.1	12.0 (9.5,14.5)	8.3 (6.5,10.0)
2000	82	2.6	10.0	10.7 (8.4,13.0)	7.5 (5.8,9.2)
2001	89	2.7	10.8	11.6 (9.2,14.0)	8.2 (6.5,9.9)
2002	88	2.7	10.6	11.1 (8.8,13.4)	7.9 (6.2,9.6)
2003	83	2.4	10.0	9.9 (7.8,12.1)	6.8 (5.3,8.3)
2004	108	3.0	12.9	13.3 (10.7,15.8)	9.5 (7.6,11.3)
2005	92	2.5	10.9	11.1 (8.8,13.3)	8.1 (6.4,9.7)
2006	123	3.3	14.4	14.0 (11.5,16.4)	9.6 (7.9,11.4)
2007	127	3.1	14.7	14.5 (12.0,17.1)	10.3 (8.4,12.1)
2008	105	2.5	12.1	11.8 (9.5,14.1)	8.5 (6.8,10.1)
2009	126	3.0	14.3	14.1 (11.7,16.6)	10.3 (8.5,12.2)

#### Female

Year of diagnosis	Number of cases	Percentage of all cancers ex. NMSC	Crude rate per 100,000 females	European age standardised incidence rate per 100,000 females (95% CI)	World age standardised incidence rate per 100,000 females (95% CI)
1993	54	1.7	6.4	5.3 (3.8,6.8)	3.7 (2.6,4.8)
1994	47	1.5	5.6	4.7 (3.3,6.2)	3.4 (2.3,4.5)
1995	51	1.6	6.0	5.8 (4.1,7.4)	4.2 (2.9,5.4)
1996	50	1.5	5.9	5.0 (3.6,6.5)	3.6 (2.5,4.7)
1997	44	1.3	5.1	4.4 (3.0,5.8)	3.2 (2.1,4.2)
1998	40	1.2	4.7	3.9 (2.6,5.2)	2.7 (1.8,3.6)
1999	56	1.7	6.5	5.8 (4.2,7.4)	4.0 (2.9,5.2)
2000	41	1.2	4.8	4.4 (3.0,5.8)	3.1 (2.1,4.1)
2001	40	1.2	4.6	3.8 (2.6,5.1)	2.6 (1.7,3.5)
2002	42	1.2	4.8	4.1 (2.8,5.4)	2.8 (1.9,3.8)
2003	48	1.3	5.5	5.0 (3.5,6.4)	3.5 (2.4,4.6)
2004	47	1.3	5.4	4.8 (3.4,6.2)	3.4 (2.4,4.5)
2005	63	1.7	7.2	5.9 (4.4,7.5)	4.2 (3.0,5.3)
2006	63	1.7	7.1	5.9 (4.4,7.5)	4.4 (3.2,5.6)
2007	58	1.5	6.5	5.8 (4.3,7.4)	4.3 (3.1,5.5)
2008	57	1.4	6.3	5.3 (3.9,6.8)	3.8 (2.7,4.9)
2009	69	1.6	7.6	6.6 (5.0,8.2)	4.7 (3.5,6.0)

#### All persons

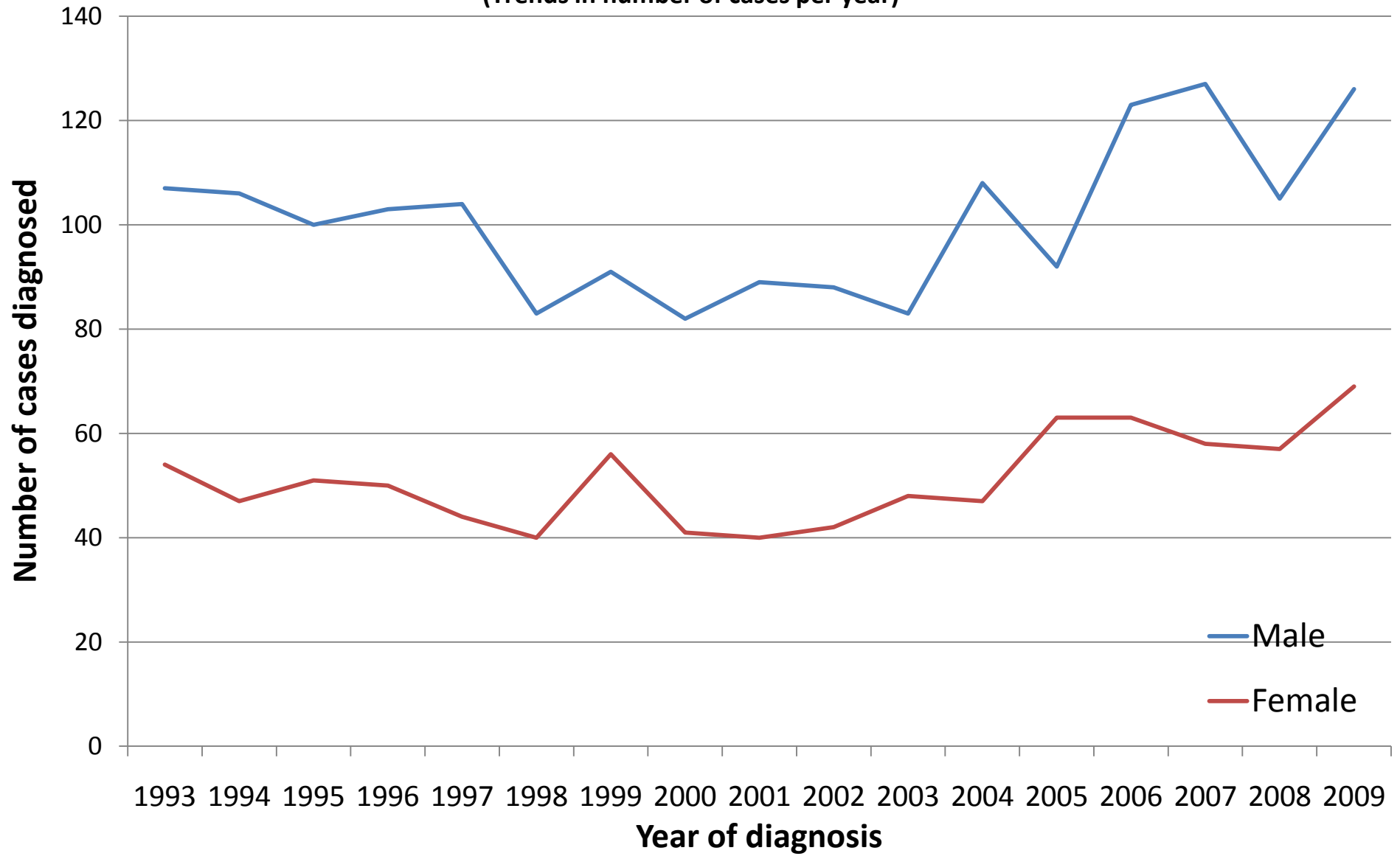
Year of diagnosis	Number of cases	Percentage of all cancers ex. NMSC	Crude rate per 100,000 persons	European age standardised incidence rate per 100,000 persons (95% CI)	World age standardised incidence rate per 100,000 persons (95% CI)
1993	161	2.5	9.8	9.7 (8.2,11.3)	6.9 (5.7,8.0)
1994	153	2.5	9.3	9.0 (7.5,10.5)	6.3 (5.3,7.4)
1995	151	2.4	9.2	9.5 (8.0,11.1)	6.8 (5.7,8.0)
1996	153	2.4	9.2	9.1 (7.6,10.5)	6.5 (5.4,7.6)
1997	148	2.3	8.9	8.9 (7.4,10.3)	6.4 (5.3,7.5)
1998	123	1.9	7.3	7.1 (5.8,8.3)	4.8 (3.9,5.7)
1999	147	2.3	8.8	8.5 (7.1,9.9)	5.9 (4.9,6.9)
2000	123	1.9	7.3	7.3 (6.0,8.6)	5.1 (4.2,6.1)
2001	129	2.0	7.6	7.4 (6.1,8.7)	5.2 (4.3,6.2)
2002	130	1.9	7.7	7.3 (6.0,8.6)	5.2 (4.2,6.1)
2003	131	1.9	7.7	7.2 (5.9,8.4)	5.0 (4.1,5.9)
2004	155	2.2	9.1	8.7 (7.3,10.1)	6.3 (5.2,7.3)
2005	155	2.1	9.0	8.4 (7.1,9.8)	6.0 (5.0,7.0)
2006	186	2.5	10.7	9.6 (8.2,11.0)	6.8 (5.7,7.8)
2007	185	2.3	10.5	9.8 (8.4,11.2)	7.1 (6.0,8.2)
2008	162	2.0	9.1	8.3 (7.0,9.7)	6.0 (5.0,7.0)
2009	195	2.3	10.9	10.2 (8.7,11.6)	7.4 (6.3,8.5)

#### NOTES:

NMSC: Non-melanoma skin cancer

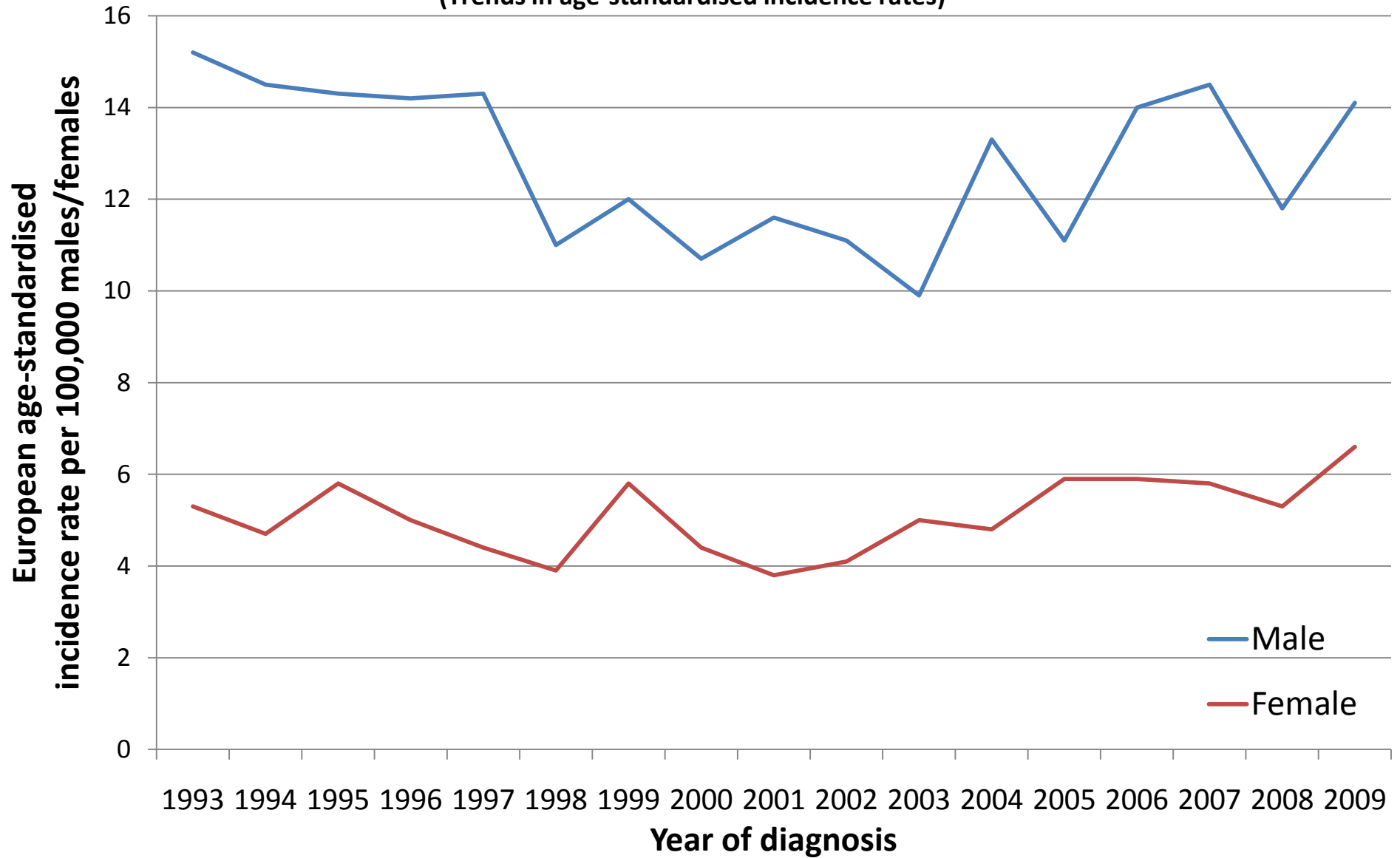
CI: Confidence interval

**Oral (C00-C14)**  
**(Trends in number of cases per year)**



# Oral (C00-C14)

(Trends in age-standardised incidence rates)



## **NOTES**

### **European Age Standardised Incidence Rate**

The incidence rate per 100,000 persons that has been adjusted to take account of different age structures between geographic areas or time periods. This is done by adopting the European standard as a reference population. The EASIR can be considered to be the number of cases per 100,000 persons occurring in the population if the population possessed the same age structure as the European standard population.

### **World Age Standardised Incidence Rate**

As for the European age-standardised rate but using the World standard population.

### **Confidence Interval**

The range of values calculated to have a specified (usually 95%) probability of containing the true value of an observation. Thus the 95% confidence interval for a rate is the range of values within which there is a 95% probability of finding the true value for the rate.