

## Number of cases and incidence rates by sex: 2005-2009

### All cancers combined (C00-C97)

Sex	Number of cases	Average number of cases per year	Crude rate per 100,000	European age-standardised incidence rate per 100,000 (95% CI)	World age-standardised incidence rate per 100,000 (95% CI)	Odds of developing the disease before age 75 = 1 in:
Male	27,629	5,526	641.2	606.7 (599.5,613.8)	409.8 (404.8,414.8)	2.6
Female	26,135	5,227	583.4	475.6 (469.6,481.6)	336.3 (331.8,340.8)	3.2
All persons	53,764	10,753	611.7	528.8 (524.2,533.3)	366.4 (363.1,369.7)	2.9

#### NOTES:

NMSC: Non-melanoma skin cancer

CI: Confidence interval

**Number of cases and incidence rates by sex and year of diagnosis**  
**All cancers combined (C00-C97)**

**Male**

Year of diagnosis	Number of cases	Crude rate per 100,000 males	European age standardised incidence rate per 100,000 males (95% CI)	World age standardised incidence rate per 100,000 males (95% CI)
1993	4,119	516.0	569.2 (551.8,586.6)	383.9 (371.9,396.0)
1994	4,168	519.7	570.3 (553.0,587.7)	384.9 (372.9,396.9)
1995	4,082	507.7	552.2 (535.3,569.2)	371.1 (359.4,382.8)
1996	4,237	522.9	562.5 (545.5,579.4)	380.0 (368.2,391.8)
1997	4,150	508.9	545.1 (528.5,561.7)	365.3 (353.9,376.8)
1998	4,236	517.4	548.2 (531.7,564.7)	366.7 (355.4,378.1)
1999	4,200	513.1	536.4 (520.2,552.6)	360.2 (349.0,371.4)
2000	4,288	522.6	541.6 (525.5,557.8)	365.7 (354.4,377.0)
2001	4,414	535.4	547.6 (531.5,563.8)	368.8 (357.6,380.0)
2002	4,605	555.6	560.4 (544.2,576.5)	378.2 (366.9,389.5)
2003	4,770	572.8	569.5 (553.4,585.7)	384.1 (372.8,395.3)
2004	4,774	570.7	558.4 (542.6,574.3)	375.7 (364.7,386.7)
2005	4,893	579.6	559.2 (543.5,574.8)	378.5 (367.5,389.5)
2006	5,229	612.7	586.6 (570.7,602.4)	395.3 (384.2,406.3)
2007	5,512	639.4	607.2 (591.2,623.2)	412.8 (401.5,424.1)
2008	5,886	675.9	632.3 (616.2,648.4)	425.9 (414.6,437.1)
2009	6,109	695.3	643.4 (627.3,659.4)	433.4 (422.2,444.6)

**Female**

Year of diagnosis	Number of cases	Crude rate per 100,000 females	European age standardised incidence rate per 100,000 females (95% CI)	World age standardised incidence rate per 100,000 females (95% CI)
1993	4,278	510.9	451.6 (437.4,465.9)	319.4 (308.9,330.0)
1994	4,147	492.7	437.7 (423.7,451.7)	309.5 (299.1,319.9)
1995	4,201	497.1	439.0 (425.0,452.9)	308.4 (298.1,318.7)
1996	4,430	520.3	453.0 (439.0,467.0)	318.1 (307.7,328.4)
1997	4,351	508.4	439.0 (425.3,452.6)	309.2 (299.0,319.4)
1998	4,367	508.3	442.2 (428.5,455.9)	312.8 (302.6,323.1)
1999	4,405	511.9	442.0 (428.3,455.6)	310.2 (300.1,320.3)
2000	4,439	514.7	446.2 (432.5,459.9)	314.4 (304.3,324.5)
2001	4,323	499.8	424.6 (411.4,437.8)	298.7 (288.8,308.5)
2002	4,580	527.8	440.6 (427.2,453.9)	309.3 (299.4,319.2)
2003	4,709	541.4	451.8 (438.3,465.2)	318.7 (308.7,328.8)
2004	4,706	538.5	445.0 (431.8,458.3)	315.2 (305.2,325.1)
2005	4,770	542.0	444.4 (431.2,457.5)	313.5 (303.7,323.3)
2006	4,980	560.7	455.9 (442.7,469.1)	321.8 (311.9,331.6)
2007	5,213	581.1	476.1 (462.7,489.6)	336.6 (326.6,346.7)
2008	5,511	609.5	494.6 (481.0,508.2)	350.3 (340.1,360.4)
2009	5,661	621.9	504.2 (490.5,517.8)	357.3 (347.1,367.5)

**All persons**

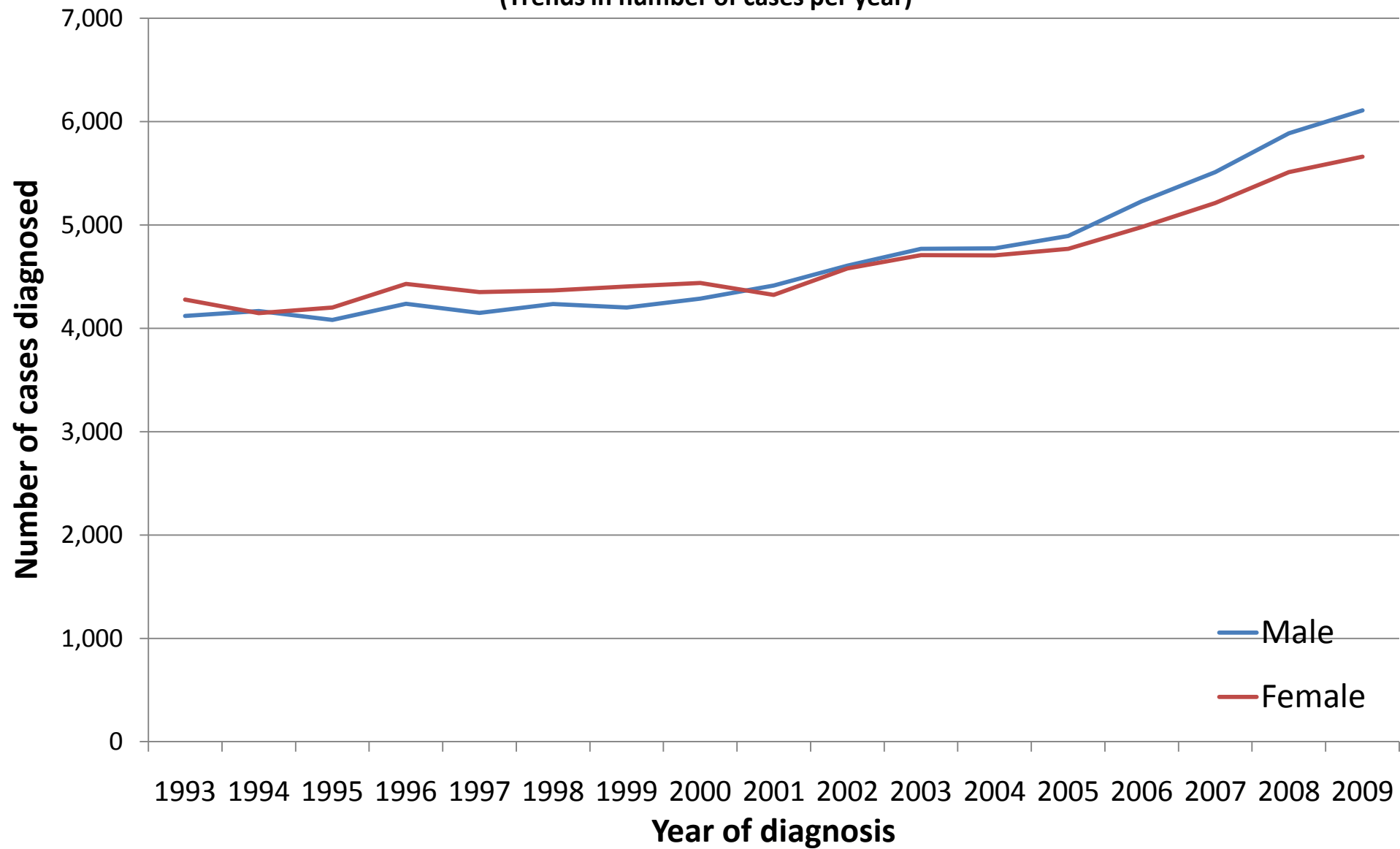
Year of diagnosis	Number of cases	Crude rate per 100,000 persons	European age standardised incidence rate per 100,000 persons (95% CI)	World age standardised incidence rate per 100,000 persons (95% CI)
1993	8,397	513.4	493.3 (482.5,504.0)	342.2 (334.3,350.0)
1994	8,315	505.9	486.0 (475.3,496.6)	337.1 (329.4,344.8)
1995	8,283	502.3	479.0 (468.4,489.5)	330.6 (323.0,338.2)
1996	8,667	521.6	493.0 (482.4,503.6)	340.8 (333.2,348.5)
1997	8,501	508.7	476.8 (466.5,487.1)	328.9 (321.4,336.4)
1998	8,603	512.8	479.6 (469.3,489.9)	331.3 (323.8,338.8)
1999	8,605	512.5	474.8 (464.6,485.0)	327.3 (319.9,334.7)
2000	8,727	518.6	480.7 (470.5,491.0)	332.9 (325.4,340.3)
2001	8,737	517.2	471.7 (461.6,481.7)	325.7 (318.4,333.0)
2002	9,185	541.4	487.1 (477.0,497.3)	336.4 (329.0,343.8)
2003	9,479	556.7	497.4 (487.2,507.6)	344.1 (336.7,351.5)
2004	9,480	554.3	489.1 (479.1,499.1)	338.6 (331.3,345.9)
2005	9,663	560.4	490.5 (480.5,500.4)	339.9 (332.7,347.2)
2006	10,209	586.2	509.1 (499.1,519.2)	351.9 (344.6,359.2)
2007	10,725	609.7	530.1 (519.9,540.3)	368.4 (361.0,375.9)
2008	11,397	642.1	550.0 (539.8,560.3)	380.9 (373.4,388.3)
2009	11,770	657.9	561.0 (550.7,571.3)	388.5 (381.0,395.9)

**NOTES:**

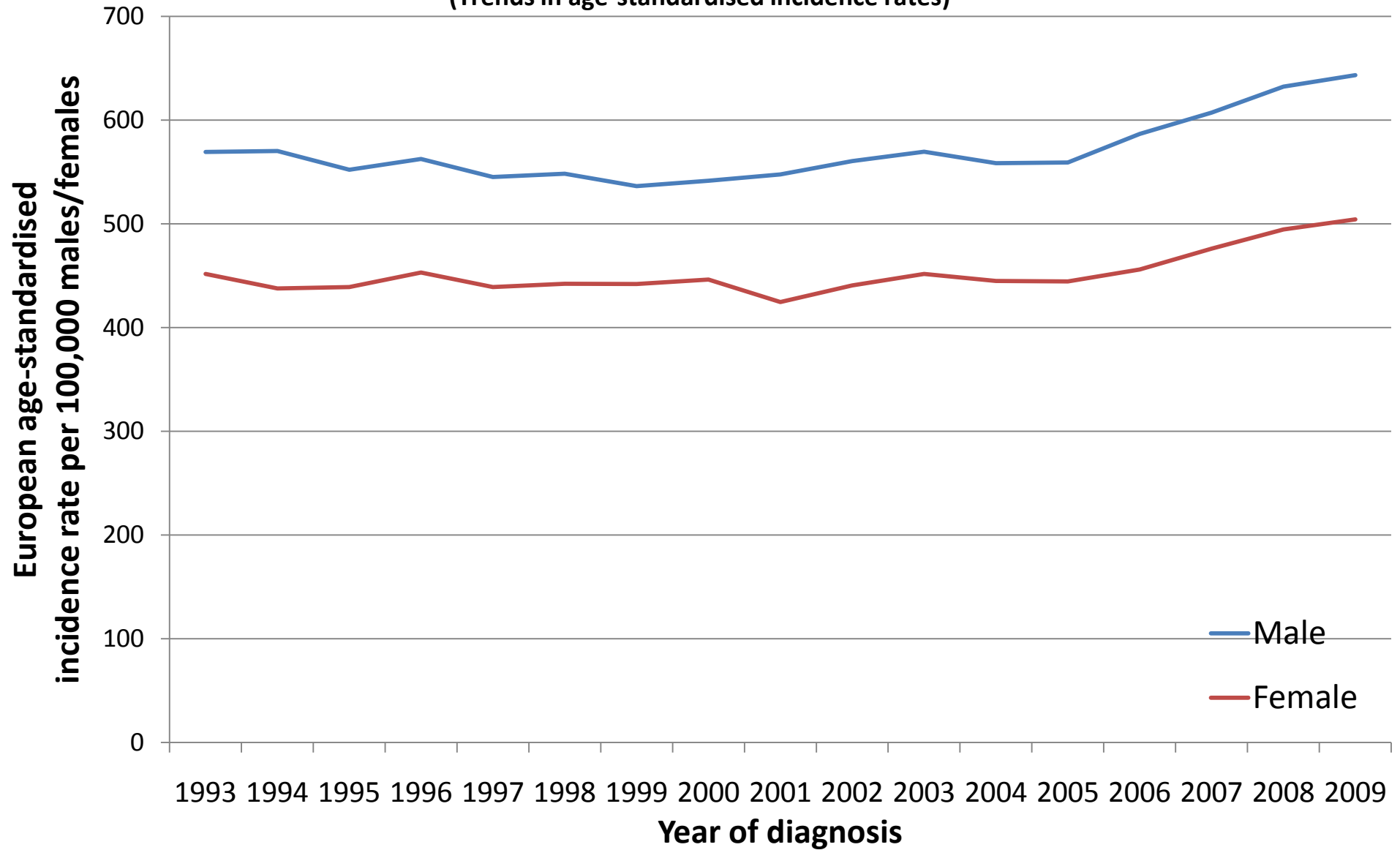
CI: Confidence interval

\* A change in classification occurred in 2009 in which some blood disorders previously considered non-malignant are now considered to be malignant cancer. There were 158 cases of this type of cancer in 2009

**All cancers combined (C00-C97)**  
(Trends in number of cases per year)



**All cancers combined (C00-C97)**  
**(Trends in age-standardised incidence rates)**



## **NOTES**

### **European Age Standardised Incidence Rate**

The incidence rate per 100,000 persons that has been adjusted to take account of different age structures between geographic areas or time periods. This is done by adopting the European standard as a reference population. The EASIR can be considered to be the number of cases per 100,000 persons occurring in the population if the population possessed the same age structure as the European standard population.

### **World Age Standardised Incidence Rate**

As for the European age-standardised rate but using the World standard population.

### **Confidence Interval**

The range of values calculated to have a specified (usually 95%) probability of containing the true value of an observation. Thus the 95% confidence interval for a rate is the range of values within which there is a 95% probability of finding the true value for the rate.