

Number of cases and incidence rates by sex: 2005-2009

All cancers ex NMSC (C00-C97 ex C44)

Sex	Number of cases	Average number of cases per year	Percentage of all cancers ex. NMSC	Crude rate per 100,000	European age-standardised incidence rate per 100,000 (95% CI)	World age-standardised incidence rate per 100,000 (95% CI)	Odds of developing the disease before age 75 = 1 in:
Male	19,863	3,973	100.0	461.0	437.5 (431.4,443.6)	298.4 (294.1,302.7)	3.4
Female	19,565	3,913	100.0	436.7	365.5 (360.2,370.9)	262.1 (258.1,266.1)	3.9
All persons	39,428	7,886	100.0	448.6	393.3 (389.3,397.2)	275.8 (272.9,278.7)	3.6

NOTES:

NMSC: Non-melanoma skin cancer

CI: Confidence interval

Number of cases and incidence rates by sex and year of diagnosis
All cancers ex NMSC (C00-C97 ex C44)

Male

Year of diagnosis	Number of cases	Percentage of all cancers ex. NMSC	Crude rate per 100,000 males	European age standardised incidence rate per 100,000 males (95% CI)	World age standardised incidence rate per 100,000 males (95% CI)
1993	3,124	100.0	391.4	430.2 (415.0,445.4)	292.2 (281.7,302.8)
1994	3,110	100.0	387.8	424.5 (409.5,439.5)	288.6 (278.1,299.0)
1995	3,059	100.0	380.5	412.0 (397.4,426.7)	278.0 (267.8,288.1)
1996	3,163	100.0	390.3	418.7 (404.0,433.3)	284.3 (274.1,294.5)
1997	3,027	100.0	371.2	396.8 (382.6,411.0)	267.8 (257.9,277.6)
1998	3,129	100.0	382.2	403.9 (389.8,418.1)	272.4 (262.5,282.2)
1999	3,014	100.0	368.2	385.3 (371.6,399.1)	261.2 (251.5,270.8)
2000	3,126	100.0	381.0	394.6 (380.7,408.4)	269.2 (259.4,278.9)
2001	3,288	100.0	398.8	407.8 (393.9,421.8)	277.3 (267.5,287.1)
2002	3,320	100.0	400.6	404.6 (390.8,418.4)	275.3 (265.6,285.1)
2003	3,483	100.0	418.2	415.9 (402.1,429.8)	281.8 (272.1,291.5)
2004	3,563	100.0	425.9	417.1 (403.3,430.8)	283.4 (273.7,293.0)
2005	3,616	100.0	428.3	414.5 (400.9,428.0)	282.8 (273.2,292.4)
2006	3,772	100.0	442.0	424.0 (410.5,437.6)	287.9 (278.4,297.4)
2007	4,048	100.0	469.6	447.0 (433.2,460.8)	307.1 (297.3,316.9)
2008	4,167	100.0	478.5	449.1 (435.4,462.7)	306.1 (296.5,315.8)
2009	4,260	100.0	484.9	451.1 (437.6,464.7)	307.0 (297.4,316.5)

Female

Year of diagnosis	Number of cases	Percentage of all cancers ex. NMSC	Crude rate per 100,000 females	European age standardised incidence rate per 100,000 females (95% CI)	World age standardised incidence rate per 100,000 females (95% CI)
1993	3,192	100.0	381.2	345.6 (333.0,358.2)	248.2 (238.7,257.7)
1994	3,111	100.0	369.6	336.8 (324.4,349.2)	241.3 (231.9,250.6)
1995	3,169	100.0	375.0	340.5 (328.1,352.9)	242.6 (233.3,251.8)
1996	3,271	100.0	384.2	343.9 (331.5,356.2)	245.5 (236.2,254.7)
1997	3,280	100.0	383.3	339.3 (327.1,351.4)	242.1 (232.9,251.2)
1998	3,309	100.0	385.2	344.0 (331.8,356.3)	246.5 (237.3,255.7)
1999	3,342	100.0	388.4	342.4 (330.3,354.5)	243.2 (234.1,252.2)
2000	3,395	100.0	393.6	350.1 (337.8,362.3)	249.8 (240.7,259.0)
2001	3,295	100.0	381.0	331.5 (319.7,343.3)	236.5 (227.6,245.3)
2002	3,491	100.0	402.3	345.5 (333.5,357.4)	246.6 (237.6,255.6)
2003	3,586	100.0	412.3	353.9 (341.8,366.0)	253.2 (244.1,262.3)
2004	3,644	100.0	417.0	354.1 (342.2,366.1)	254.6 (245.5,263.7)
2005	3,651	100.0	414.8	346.3 (334.6,358.0)	247.1 (238.3,255.9)
2006	3,721	100.0	418.9	349.5 (337.8,361.2)	250.3 (241.5,259.2)
2007	3,898	100.0	434.5	365.8 (353.9,377.8)	262.1 (253.1,271.0)
2008	4,086	100.0	451.9	377.3 (365.3,389.3)	271.2 (262.2,280.3)
2009	4,209	100.0	462.4	386.7 (374.6,398.9)	278.2 (269.1,287.4)

All persons

Year of diagnosis	Number of cases	Percentage of all cancers ex. NMSC	Crude rate per 100,000 persons	European age standardised incidence rate per 100,000 persons (95% CI)	World age standardised incidence rate per 100,000 persons (95% CI)
1993	6,316	100.0	386.2	373.8 (364.4,383.3)	262.4 (255.5,269.3)
1994	6,221	100.0	378.5	367.0 (357.7,376.4)	257.3 (250.5,264.1)
1995	6,228	100.0	377.7	363.1 (353.9,372.4)	253.1 (246.4,259.9)
1996	6,434	100.0	387.2	369.0 (359.8,378.2)	258.2 (251.4,264.9)
1997	6,307	100.0	377.4	356.9 (347.9,365.9)	248.9 (242.3,255.5)
1998	6,438	100.0	383.7	362.7 (353.6,371.7)	253.3 (246.7,259.9)
1999	6,356	100.0	378.6	354.2 (345.3,363.0)	246.9 (240.4,253.4)
2000	6,521	100.0	387.5	363.6 (354.6,372.5)	254.8 (248.2,261.4)
2001	6,583	100.0	389.7	359.3 (350.4,368.1)	251.1 (244.7,257.6)
2002	6,811	100.0	401.4	365.5 (356.6,374.3)	255.8 (249.3,262.3)
2003	7,069	100.0	415.2	374.9 (366.0,383.8)	262.0 (255.5,268.6)
2004	7,207	100.0	421.4	376.9 (368.0,385.8)	264.3 (257.8,270.8)
2005	7,267	100.0	421.4	372.3 (363.6,381.0)	260.6 (254.2,267.0)
2006	7,493	100.0	430.2	378.5 (369.8,387.3)	264.6 (258.2,271.0)
2007	7,946	100.0	451.7	398.3 (389.4,407.2)	280.2 (273.6,286.8)
2008	8,253	100.0	465.0	404.5 (395.7,413.4)	284.1 (277.5,290.6)
2009	8,469	100.0	473.4	410.9 (402.0,419.8)	288.3 (281.8,294.9)

NOTES:

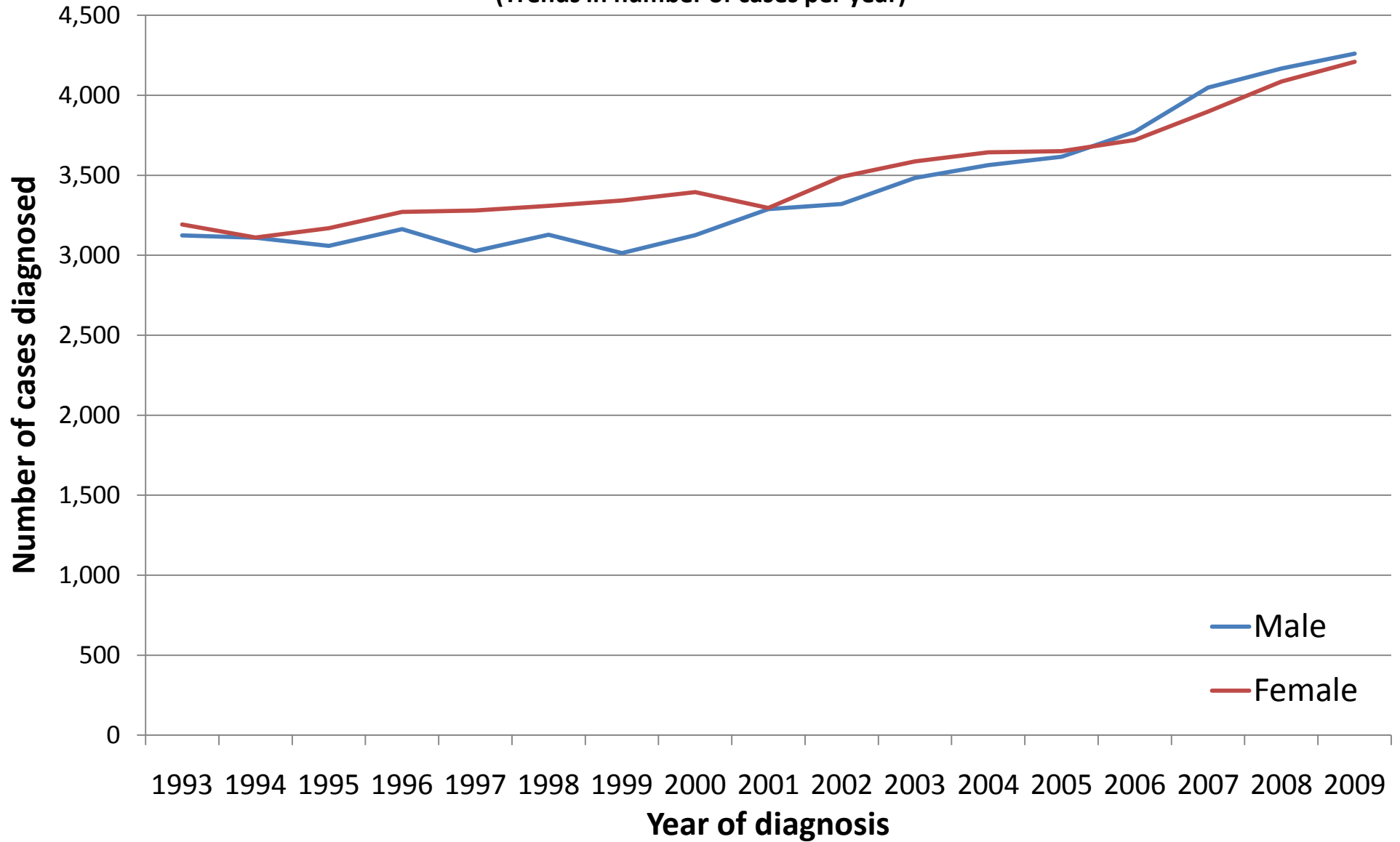
NMSC: Non-melanoma skin cancer

CI: Confidence interval

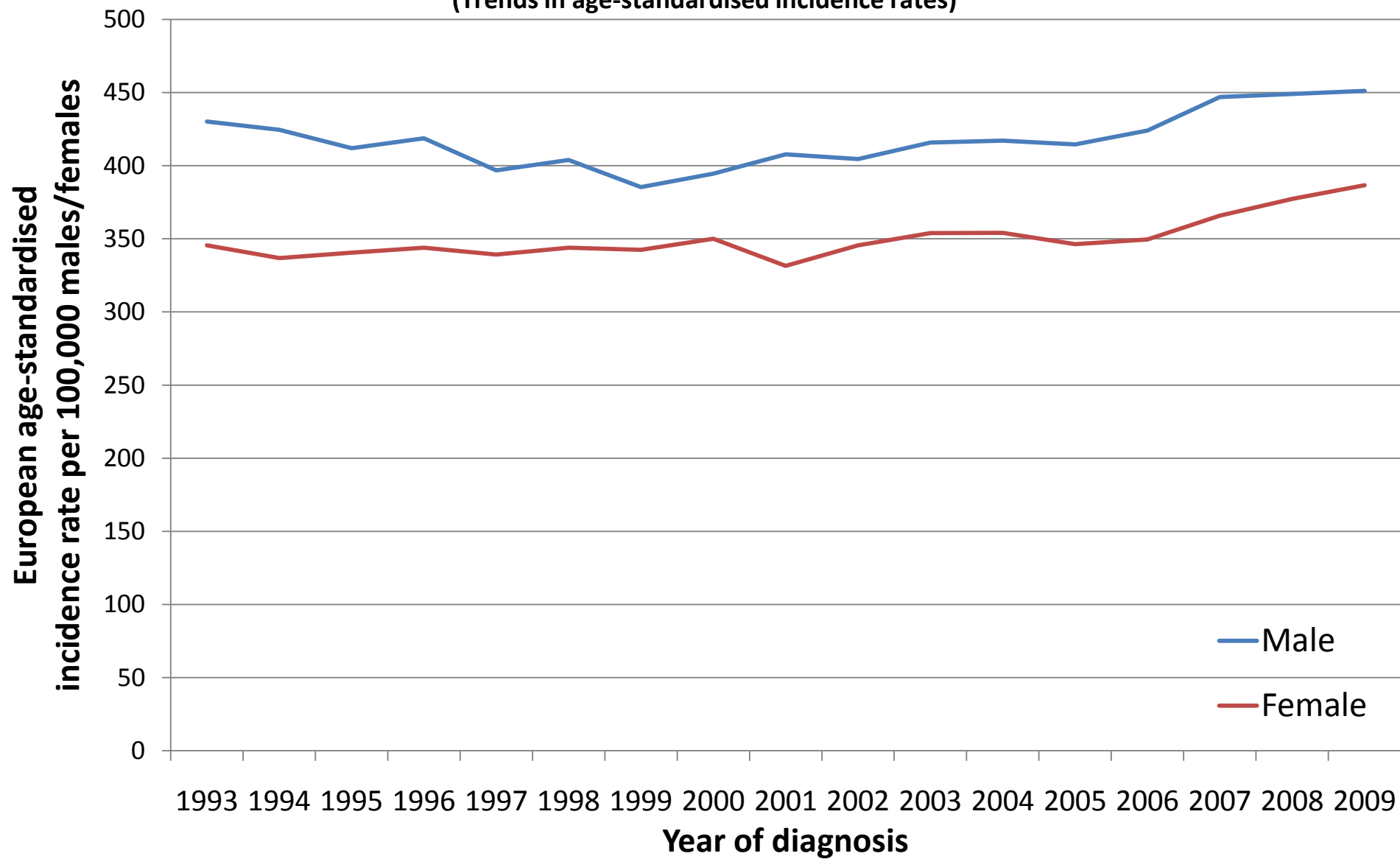
* A change in classification occurred in 2009 in which some blood disorders previously considered non-malignant are now considered to be malignant cancer. There were 158 cases of this type of cancer in 2009

All cancers ex NMSC (C00-C97 ex C44)

(Trends in number of cases per year)



All cancers ex NMSC (C00-C97 ex C44)
(Trends in age-standardised incidence rates)



NOTES

European Age Standardised Incidence Rate

The incidence rate per 100,000 persons that has been adjusted to take account of different age structures between geographic areas or time periods. This is done by adopting the European standard as a reference population. The EASIR can be considered to be the number of cases per 100,000 persons occurring in the population if the population possessed the same age structure as the European standard population.

World Age Standardised Incidence Rate

As for the European age-standardised rate but using the World standard population.

Confidence Interval

The range of values calculated to have a specified (usually 95%) probability of containing the true value of an observation. Thus the 95% confidence interval for a rate is the range of values within which there is a 95% probability of finding the true value for the rate.