

Number of cases and incidence rates by sex: 2005-2009

Oesophagus (C15)

Sex	Number of cases	Average number of cases per year	Percentage of all cancers ex. NMSC	Crude rate per 100,000	European age-standardised incidence rate per 100,000 (95% CI)	World age-standardised incidence rate per 100,000 (95% CI)	Odds of developing the disease before age 75 = 1 in:
Male	601	120	3.0	13.9	13.5 (12.4,14.6)	9.2 (8.4,10.0)	88.6
Female	304	61	1.6	6.8	4.9 (4.3,5.5)	3.2 (2.8,3.6)	285.0
All persons	905	181	2.3	10.3	8.9 (8.3,9.5)	6.0 (5.6,6.4)	138.5

NOTES:

NMSC: Non-melanoma skin cancer

CI: Confidence interval

Number of cases and incidence rates by sex and year of diagnosis
Oesophagus (C15)

Male

Year of diagnosis	Number of cases	Percentage of all cancers ex. NMSC	Crude rate per 100,000 males	European age standardised incidence rate per 100,000 males (95% CI)	World age standardised incidence rate per 100,000 males (95% CI)
1993	88	2.8	11.0	12.2 (9.6,14.8)	8.3 (6.5,10.1)
1994	100	3.2	12.5	13.9 (11.2,16.7)	9.4 (7.5,11.3)
1995	96	3.1	11.9	13.5 (10.8,16.2)	9.6 (7.6,11.6)
1996	79	2.5	9.7	10.3 (8.0,12.6)	6.8 (5.3,8.4)
1997	97	3.2	11.9	13.3 (10.6,16.0)	9.2 (7.3,11.1)
1998	100	3.2	12.2	13.5 (10.8,16.1)	9.2 (7.4,11.1)
1999	92	3.1	11.2	12.1 (9.6,14.6)	8.2 (6.4,9.9)
2000	70	2.2	8.5	9.0 (6.9,11.1)	6.0 (4.6,7.5)
2001	102	3.1	12.4	13.0 (10.4,15.5)	8.7 (6.9,10.4)
2002	84	2.5	10.1	10.5 (8.3,12.8)	7.0 (5.5,8.6)
2003	94	2.7	11.3	11.3 (9.0,13.6)	7.6 (6.0,9.2)
2004	107	3.0	12.8	12.8 (10.3,15.2)	8.6 (6.9,10.3)
2005	111	3.1	13.1	13.0 (10.6,15.5)	8.9 (7.2,10.6)
2006	122	3.2	14.3	13.7 (11.2,16.1)	9.1 (7.4,10.8)
2007	127	3.1	14.7	14.2 (11.7,16.7)	9.6 (7.9,11.3)
2008	129	3.1	14.8	14.3 (11.8,16.8)	10.0 (8.2,11.7)
2009	112	2.6	12.7	12.2 (9.9,14.5)	8.4 (6.8,10.0)

Female

Year of diagnosis	Number of cases	Percentage of all cancers ex. NMSC	Crude rate per 100,000 females	European age standardised incidence rate per 100,000 females (95% CI)	World age standardised incidence rate per 100,000 females (95% CI)
1993	56	1.8	6.7	5.3 (3.8,6.7)	3.4 (2.4,4.4)
1994	52	1.7	6.2	4.6 (3.3,5.9)	2.9 (2.0,3.9)
1995	56	1.8	6.6	5.2 (3.7,6.6)	3.3 (2.3,4.3)
1996	61	1.9	7.2	5.3 (3.9,6.8)	3.4 (2.4,4.3)
1997	74	2.3	8.6	6.3 (4.8,7.8)	4.0 (2.9,5.0)
1998	53	1.6	6.2	4.4 (3.1,5.7)	2.8 (1.9,3.6)
1999	61	1.8	7.1	5.6 (4.1,7.1)	3.7 (2.7,4.7)
2000	69	2.0	8.0	6.2 (4.6,7.7)	4.0 (3.0,5.1)
2001	63	1.9	7.3	5.4 (4.0,6.8)	3.5 (2.5,4.5)
2002	58	1.7	6.7	4.9 (3.6,6.2)	3.1 (2.2,4.0)
2003	52	1.5	6.0	4.5 (3.2,5.8)	3.0 (2.1,3.9)
2004	53	1.5	6.1	4.1 (2.9,5.2)	2.5 (1.7,3.3)
2005	49	1.3	5.6	4.0 (2.8,5.2)	2.5 (1.7,3.3)
2006	58	1.6	6.5	5.2 (3.8,6.6)	3.4 (2.4,4.4)
2007	76	1.9	8.5	6.2 (4.7,7.7)	4.1 (3.1,5.2)
2008	63	1.5	7.0	4.8 (3.6,6.1)	3.1 (2.2,4.0)
2009	58	1.4	6.4	4.4 (3.2,5.6)	2.8 (2.0,3.6)

All persons

Year of diagnosis	Number of cases	Percentage of all cancers ex. NMSC	Crude rate per 100,000 persons	European age standardised incidence rate per 100,000 persons (95% CI)	World age standardised incidence rate per 100,000 persons (95% CI)
1993	144	2.3	8.8	8.3 (6.9,9.7)	5.6 (4.6,6.6)
1994	152	2.4	9.2	8.8 (7.3,10.2)	5.9 (4.9,6.9)
1995	152	2.4	9.2	9.1 (7.6,10.5)	6.3 (5.2,7.3)
1996	140	2.2	8.4	7.6 (6.3,8.9)	4.9 (4.1,5.8)
1997	171	2.7	10.2	9.6 (8.1,11.1)	6.4 (5.4,7.5)
1998	153	2.4	9.1	8.5 (7.2,9.9)	5.8 (4.8,6.7)
1999	153	2.4	9.1	8.5 (7.1,9.9)	5.8 (4.8,6.7)
2000	139	2.1	8.3	7.5 (6.2,8.8)	5.0 (4.1,5.9)
2001	165	2.5	9.8	8.8 (7.4,10.2)	5.9 (4.9,6.8)
2002	142	2.1	8.4	7.4 (6.1,8.6)	4.9 (4.0,5.7)
2003	146	2.1	8.6	7.5 (6.2,8.7)	5.1 (4.2,5.9)
2004	160	2.2	9.4	8.1 (6.8,9.4)	5.4 (4.5,6.3)
2005	160	2.2	9.3	8.2 (6.9,9.5)	5.5 (4.6,6.5)
2006	180	2.4	10.3	9.0 (7.6,10.3)	6.0 (5.1,6.9)
2007	203	2.6	11.5	9.8 (8.4,11.2)	6.6 (5.7,7.6)
2008	192	2.3	10.8	9.3 (8.0,10.7)	6.4 (5.4,7.3)
2009	170	2.0	9.5	8.1 (6.8,9.3)	5.4 (4.6,6.3)

NOTES:

NMSC: Non-melanoma skin cancer

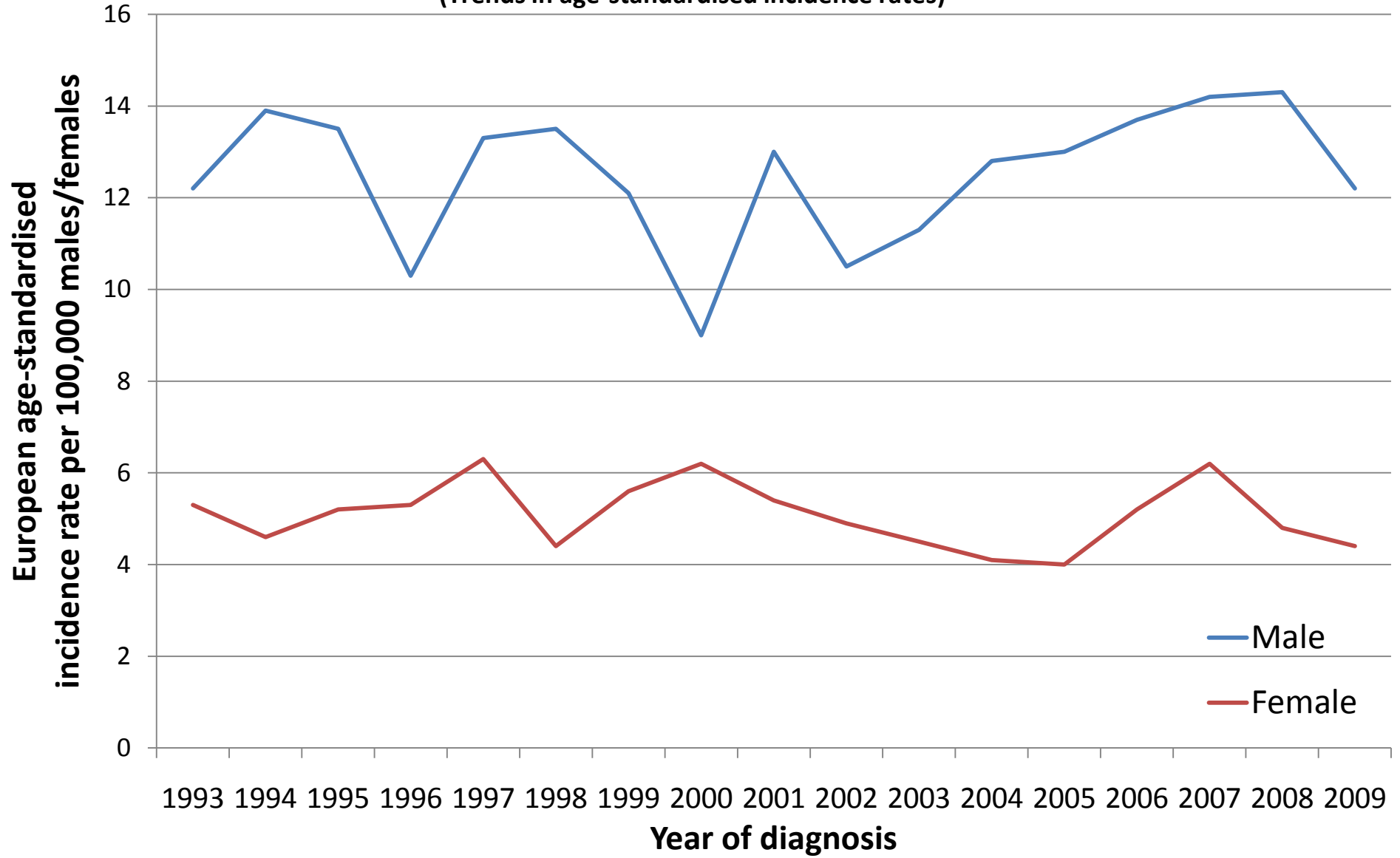
CI: Confidence interval

Oesophagus (C15)
(Trends in number of cases per year)



Oesophagus (C15)

(Trends in age-standardised incidence rates)



NOTES

European Age Standardised Incidence Rate

The incidence rate per 100,000 persons that has been adjusted to take account of different age structures between geographic areas or time periods. This is done by adopting the European standard as a reference population. The EASIR can be considered to be the number of cases per 100,000 persons occurring in the population if the population possessed the same age structure as the European standard population.

World Age Standardised Incidence Rate

As for the European age-standardised rate but using the World standard population.

Confidence Interval

The range of values calculated to have a specified (usually 95%) probability of containing the true value of an observation. Thus the 95% confidence interval for a rate is the range of values within which there is a 95% probability of finding the true value for the rate.