

## Number of cases and incidence rates by sex: 2005-2009

### Stomach (C16)

Sex	Number of cases	Average number of cases per year	Percentage of all cancers ex. NMSC	Crude rate per 100,000	European age-standardised incidence rate per 100,000 (95% CI)	World age-standardised incidence rate per 100,000 (95% CI)	Odds of developing the disease before age 75 = 1 in:
Male	659	132	3.3	15.3	14.1 (13.0,15.2)	9.0 (8.3,9.8)	96.1
Female	452	90	2.3	10.1	7.1 (6.4,7.8)	4.7 (4.2,5.2)	195.4
All persons	1,111	222	2.8	12.6	10.2 (9.5,10.8)	6.6 (6.2,7.0)	131.5

#### NOTES:

NMSC: Non-melanoma skin cancer

CI: Confidence interval

**Number of cases and incidence rates by sex and year of diagnosis**  
**Stomach (C16)**

**Male**

Year of diagnosis	Number of cases	Percentage of all cancers ex. NMSC	Crude rate per 100,000 males	European age standardised incidence rate per 100,000 males (95% CI)	World age standardised incidence rate per 100,000 males (95% CI)
1993	153	4.9	19.2	21.2 (17.8,24.6)	14.3 (12.0,16.7)
1994	167	5.4	20.8	22.5 (19.0,26.0)	15.0 (12.6,17.3)
1995	155	5.1	19.3	21.3 (17.9,24.7)	14.0 (11.8,16.3)
1996	170	5.4	21.0	22.8 (19.4,26.3)	14.9 (12.6,17.3)
1997	143	4.7	17.5	18.9 (15.8,22.1)	12.5 (10.4,14.7)
1998	175	5.6	21.4	23.1 (19.6,26.5)	15.6 (13.2,18.0)
1999	157	5.2	19.2	19.9 (16.7,23.0)	13.0 (10.9,15.2)
2000	139	4.4	16.9	17.6 (14.6,20.5)	11.5 (9.5,13.5)
2001	148	4.5	18.0	17.7 (14.8,20.6)	11.6 (9.7,13.6)
2002	156	4.7	18.8	18.6 (15.7,21.6)	12.6 (10.5,14.6)
2003	170	4.9	20.4	20.3 (17.2,23.4)	13.4 (11.3,15.5)
2004	127	3.6	15.2	14.7 (12.1,17.3)	9.7 (7.9,11.5)
2005	125	3.5	14.8	13.7 (11.3,16.1)	8.6 (7.0,10.2)
2006	132	3.5	15.5	14.7 (12.2,17.2)	9.3 (7.7,10.9)
2007	136	3.4	15.8	14.6 (12.1,17.1)	9.4 (7.7,11.0)
2008	141	3.4	16.2	14.8 (12.3,17.2)	9.6 (8.0,11.3)
2009	125	2.9	14.2	12.8 (10.6,15.1)	8.3 (6.8,9.8)

**Female**

Year of diagnosis	Number of cases	Percentage of all cancers ex. NMSC	Crude rate per 100,000 females	European age standardised incidence rate per 100,000 females (95% CI)	World age standardised incidence rate per 100,000 females (95% CI)
1993	105	3.3	12.5	9.5 (7.6,11.5)	6.1 (4.8,7.4)
1994	96	3.1	11.4	8.9 (7.0,10.8)	5.7 (4.4,7.0)
1995	85	2.7	10.1	8.2 (6.4,10.1)	5.7 (4.3,7.1)
1996	117	3.6	13.7	10.6 (8.6,12.7)	7.1 (5.6,8.5)
1997	100	3.0	11.7	8.8 (7.0,10.6)	5.7 (4.4,6.9)
1998	99	3.0	11.5	8.8 (7.0,10.7)	5.8 (4.5,7.0)
1999	107	3.2	12.4	9.5 (7.6,11.4)	6.1 (4.8,7.4)
2000	92	2.7	10.7	8.2 (6.5,10.0)	5.4 (4.1,6.6)
2001	107	3.2	12.4	8.5 (6.8,10.2)	5.4 (4.2,6.6)
2002	99	2.8	11.4	8.4 (6.7,10.2)	5.5 (4.3,6.7)
2003	93	2.6	10.7	7.8 (6.2,9.5)	5.0 (3.9,6.2)
2004	81	2.2	9.3	6.5 (5.0,8.0)	4.2 (3.2,5.3)
2005	86	2.4	9.8	7.0 (5.5,8.6)	4.6 (3.5,5.7)
2006	98	2.6	11.0	7.8 (6.1,9.4)	5.0 (3.9,6.2)
2007	99	2.5	11.0	7.7 (6.1,9.4)	5.0 (3.9,6.1)
2008	95	2.3	10.5	7.6 (6.0,9.2)	5.1 (3.9,6.2)
2009	74	1.8	8.1	5.6 (4.2,7.0)	3.7 (2.7,4.6)

**All persons**

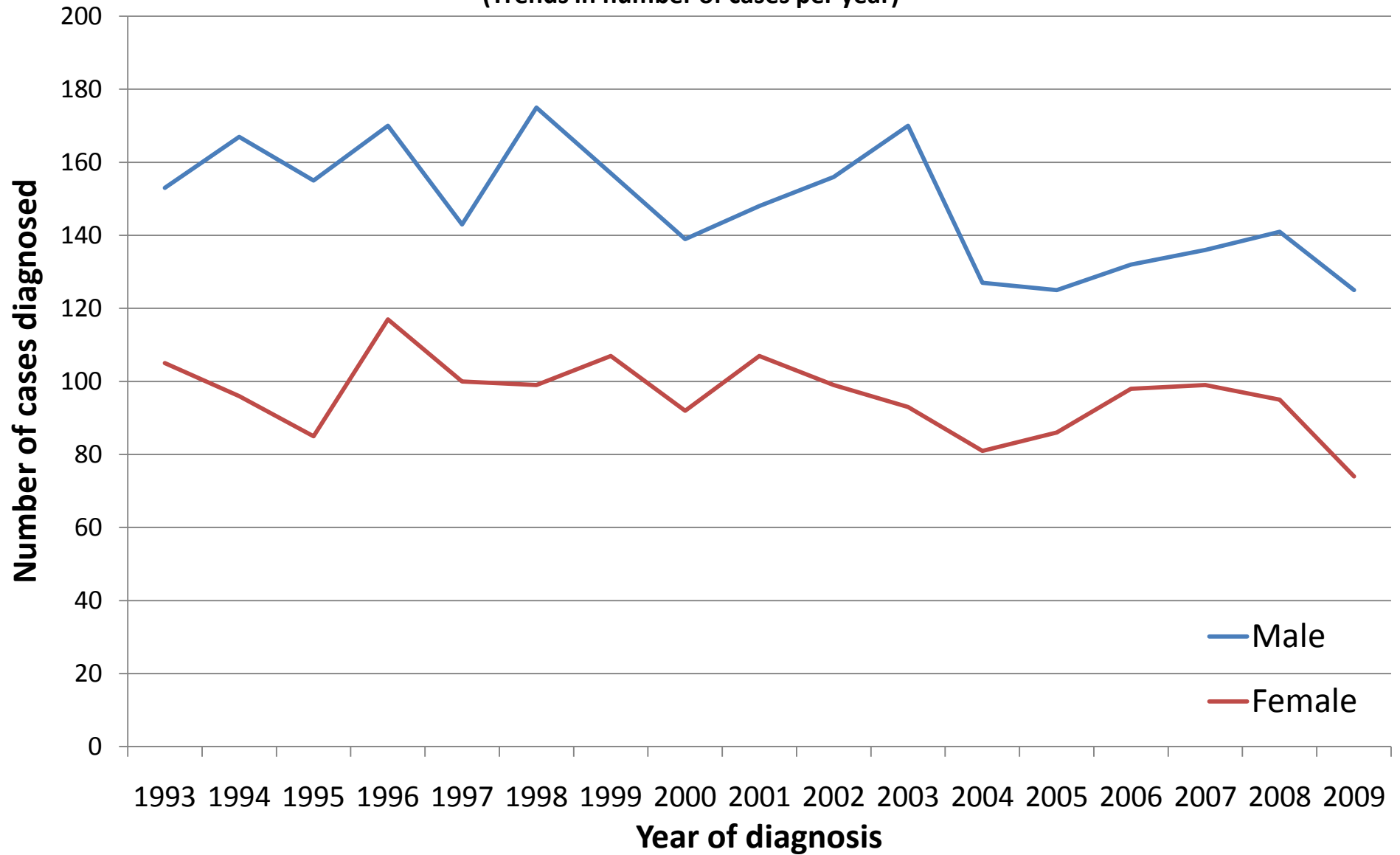
Year of diagnosis	Number of cases	Percentage of all cancers ex. NMSC	Crude rate per 100,000 persons	European age standardised incidence rate per 100,000 persons (95% CI)	World age standardised incidence rate per 100,000 persons (95% CI)
1993	258	4.1	15.8	14.5 (12.7,16.3)	9.7 (8.4,10.9)
1994	263	4.2	16.0	14.8 (13.0,16.7)	9.8 (8.5,11.1)
1995	240	3.9	14.6	13.7 (11.9,15.5)	9.3 (8.0,10.5)
1996	287	4.5	17.3	15.8 (13.9,17.7)	10.5 (9.2,11.8)
1997	243	3.9	14.5	13.2 (11.5,14.9)	8.7 (7.5,9.9)
1998	274	4.3	16.3	15.3 (13.4,17.1)	10.3 (9.0,11.6)
1999	264	4.2	15.7	14.0 (12.3,15.8)	9.2 (8.0,10.4)
2000	231	3.5	13.7	12.2 (10.6,13.8)	8.1 (6.9,9.2)
2001	255	3.9	15.1	12.7 (11.1,14.3)	8.3 (7.2,9.4)
2002	255	3.7	15.0	13.1 (11.5,14.8)	8.8 (7.6,9.9)
2003	263	3.7	15.4	13.4 (11.7,15.1)	8.8 (7.7,10.0)
2004	208	2.9	12.2	10.2 (8.8,11.6)	6.7 (5.7,7.7)
2005	211	2.9	12.2	9.9 (8.5,11.2)	6.4 (5.4,7.3)
2006	230	3.1	13.2	10.7 (9.3,12.2)	6.9 (5.9,7.9)
2007	235	3.0	13.4	10.7 (9.3,12.1)	6.9 (5.9,7.9)
2008	236	2.9	13.3	10.7 (9.3,12.1)	7.1 (6.1,8.1)
2009	199	2.3	11.1	8.8 (7.5,10.1)	5.7 (4.9,6.6)

**NOTES:**

NMSC: Non-melanoma skin cancer

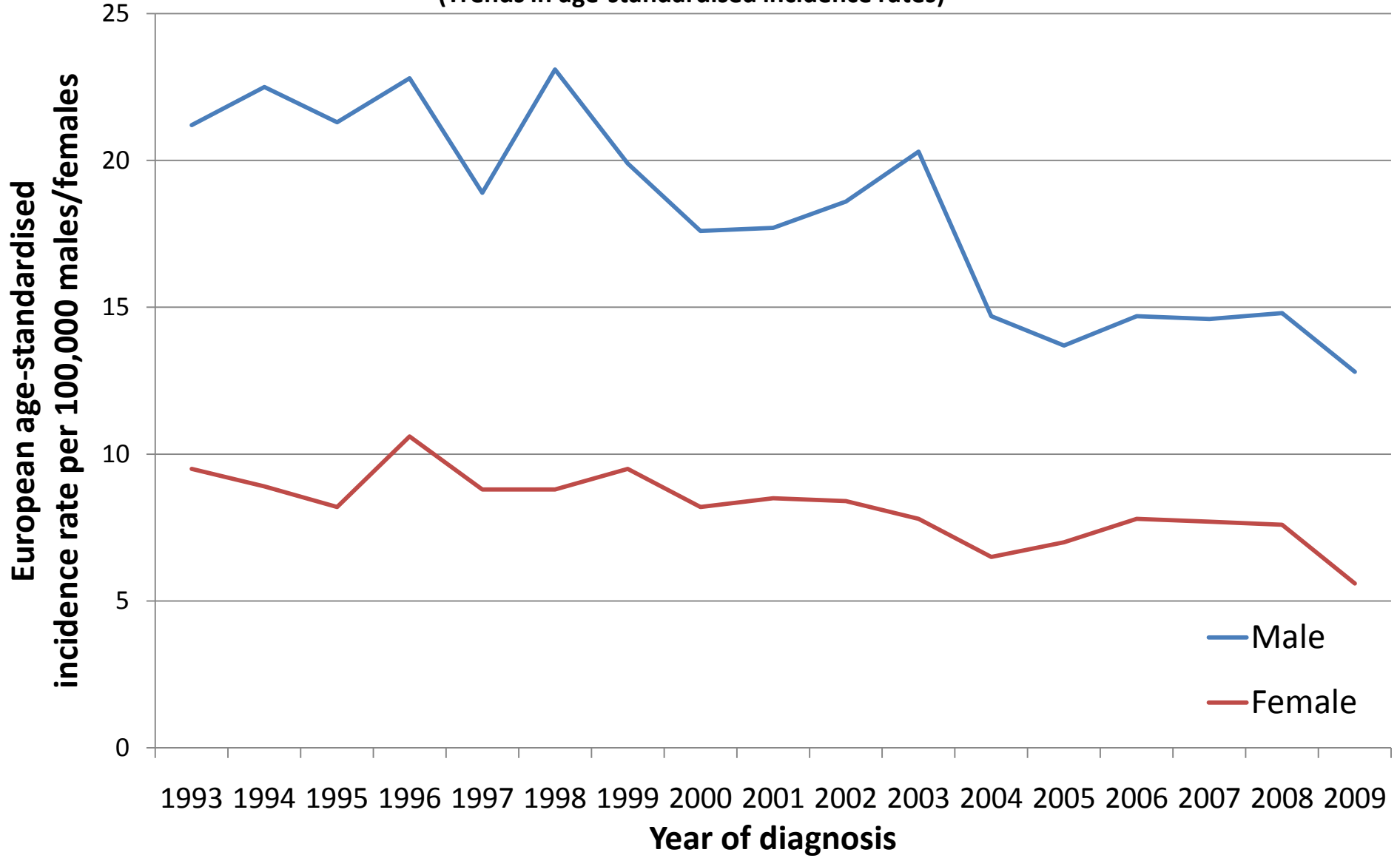
CI: Confidence interval

**Stomach (C16)**  
(Trends in number of cases per year)



# Stomach (C16)

(Trends in age-standardised incidence rates)



## **NOTES**

### **European Age Standardised Incidence Rate**

The incidence rate per 100,000 persons that has been adjusted to take account of different age structures between geographic areas or time periods. This is done by adopting the European standard as a reference population. The EASIR can be considered to be the number of cases per 100,000 persons occurring in the population if the population possessed the same age structure as the European standard population.

### **World Age Standardised Incidence Rate**

As for the European age-standardised rate but using the World standard population.

### **Confidence Interval**

The range of values calculated to have a specified (usually 95%) probability of containing the true value of an observation. Thus the 95% confidence interval for a rate is the range of values within which there is a 95% probability of finding the true value for the rate.