

Number of cases and incidence rates by sex: 2005-2009

Colon (C18)

Sex	Number of cases	Average number of cases per year	Percentage of all cancers ex. NMSC	Crude rate per 100,000	European age-standardised incidence rate per 100,000 (95% CI)	World age-standardised incidence rate per 100,000 (95% CI)	Odds of developing the disease before age 75 = 1 in:
Male	1,865	373	9.4	43.3	40.5 (38.7,42.4)	26.5 (25.2,27.7)	32.8
Female	1,706	341	8.7	38.1	28.4 (27.0,29.8)	18.8 (17.8,19.8)	45.9
All persons	3,571	714	9.1	40.6	33.6 (32.5,34.7)	22.2 (21.4,23.0)	38.6

NOTES:

NMSC: Non-melanoma skin cancer

CI: Confidence interval

**Number of cases and incidence rates by sex and year of diagnosis
Colon (C18)**

Male

Year of diagnosis	Number of cases	Percentage of all cancers ex. NMSC	Crude rate per 100,000 males	European age standardised incidence rate per 100,000 males (95% CI)	World age standardised incidence rate per 100,000 males (95% CI)
1993	291	9.3	36.5	40.6 (35.9,45.4)	26.5 (23.3,29.6)
1994	305	9.8	38.0	42.0 (37.2,46.7)	27.9 (24.6,31.1)
1995	316	10.3	39.3	42.8 (38.0,47.6)	27.6 (24.4,30.7)
1996	313	9.9	38.6	42.4 (37.6,47.1)	28.4 (25.1,31.6)
1997	298	9.8	36.5	38.7 (34.2,43.1)	25.0 (22.0,28.0)
1998	303	9.7	37.0	39.6 (35.1,44.1)	26.1 (23.1,29.2)
1999	290	9.6	35.4	37.4 (33.1,41.8)	24.8 (21.9,27.8)
2000	273	8.7	33.3	34.5 (30.4,38.6)	22.9 (20.0,25.7)
2001	319	9.7	38.7	39.5 (35.1,43.8)	26.2 (23.2,29.2)
2002	303	9.1	36.6	37.1 (32.9,41.4)	24.4 (21.6,27.3)
2003	314	9.0	37.7	37.0 (32.8,41.1)	24.0 (21.2,26.7)
2004	307	8.6	36.7	35.6 (31.6,39.7)	23.4 (20.7,26.1)
2005	365	10.1	43.2	40.8 (36.5,45.0)	26.7 (23.9,29.6)
2006	362	9.6	42.4	39.9 (35.8,44.1)	25.7 (23.0,28.5)
2007	398	9.8	46.2	43.2 (39.0,47.5)	28.4 (25.5,31.3)
2008	361	8.7	41.5	38.9 (34.9,42.9)	26.0 (23.2,28.8)
2009	379	8.9	43.1	39.6 (35.6,43.6)	25.6 (23.0,28.3)

Female

Year of diagnosis	Number of cases	Percentage of all cancers ex. NMSC	Crude rate per 100,000 females	European age standardised incidence rate per 100,000 females (95% CI)	World age standardised incidence rate per 100,000 females (95% CI)
1993	323	10.1	38.6	31.6 (28.0,35.3)	21.0 (18.5,23.6)
1994	311	10.0	36.9	31.0 (27.3,34.6)	20.6 (18.0,23.2)
1995	346	10.9	40.9	33.1 (29.4,36.9)	22.0 (19.4,24.6)
1996	311	9.5	36.5	29.8 (26.3,33.3)	19.7 (17.3,22.2)
1997	311	9.5	36.3	28.4 (25.1,31.8)	18.7 (16.4,21.1)
1998	324	9.8	37.7	31.5 (27.9,35.1)	21.3 (18.8,23.9)
1999	333	10.0	38.7	30.2 (26.7,33.6)	20.0 (17.6,22.4)
2000	272	8.0	31.5	25.6 (22.4,28.9)	17.0 (14.8,19.3)
2001	277	8.4	32.0	24.8 (21.8,27.9)	16.4 (14.3,18.6)
2002	313	9.0	36.1	28.4 (25.1,31.7)	19.1 (16.7,21.4)
2003	311	8.7	35.8	27.6 (24.3,30.8)	18.4 (16.1,20.7)
2004	317	8.7	36.3	28.2 (24.9,31.5)	18.9 (16.6,21.2)
2005	284	7.8	32.3	23.9 (21.0,26.8)	15.8 (13.7,17.8)
2006	336	9.0	37.8	28.4 (25.2,31.6)	18.5 (16.3,20.8)
2007	384	9.9	42.8	32.3 (28.9,35.7)	21.6 (19.2,24.0)
2008	360	8.8	39.8	29.2 (26.0,32.4)	19.3 (17.1,21.5)
2009	342	8.1	37.6	28.2 (25.1,31.4)	18.8 (16.6,21.0)

All persons

Year of diagnosis	Number of cases	Percentage of all cancers ex. NMSC	Crude rate per 100,000 persons	European age standardised incidence rate per 100,000 persons (95% CI)	World age standardised incidence rate per 100,000 persons (95% CI)
1993	614	9.7	37.5	35.2 (32.3,38.0)	23.2 (21.2,25.2)
1994	616	9.9	37.5	35.4 (32.5,38.3)	23.6 (21.6,25.6)
1995	662	10.6	40.1	36.7 (33.8,39.5)	24.1 (22.1,26.1)
1996	624	9.7	37.6	34.9 (32.1,37.7)	23.4 (21.4,25.3)
1997	609	9.7	36.4	32.7 (30.0,35.3)	21.3 (19.5,23.2)
1998	627	9.7	37.4	34.5 (31.7,37.3)	23.2 (21.2,25.1)
1999	623	9.8	37.1	33.3 (30.6,36.0)	22.1 (20.2,24.0)
2000	545	8.4	32.4	29.4 (26.9,32.0)	19.6 (17.8,21.3)
2001	596	9.1	35.3	31.1 (28.6,33.7)	20.8 (19.0,22.6)
2002	616	9.0	36.3	32.0 (29.4,34.6)	21.3 (19.5,23.1)
2003	625	8.8	36.7	31.4 (28.8,33.9)	20.7 (18.9,22.4)
2004	624	8.7	36.5	31.4 (28.9,33.9)	20.9 (19.1,22.6)
2005	649	8.9	37.6	31.3 (28.9,33.8)	20.7 (19.0,22.4)
2006	698	9.3	40.1	33.3 (30.7,35.8)	21.6 (19.9,23.4)
2007	782	9.8	44.5	36.9 (34.3,39.6)	24.5 (22.7,26.4)
2008	721	8.7	40.6	33.5 (31.0,36.0)	22.3 (20.6,24.1)
2009	721	8.5	40.3	32.9 (30.4,35.4)	21.7 (20.0,23.4)

NOTES:

NMSC: Non-melanoma skin cancer

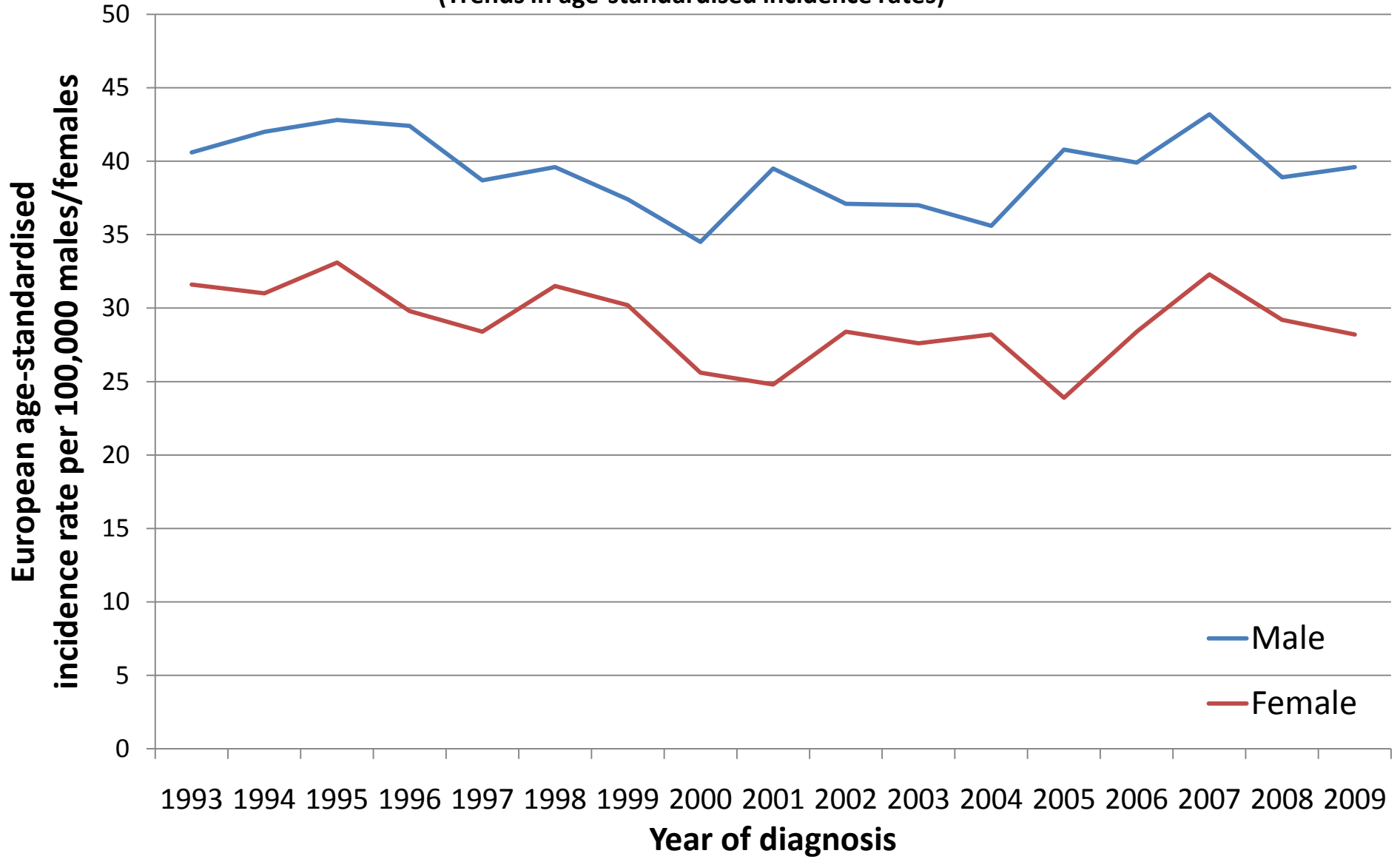
CI: Confidence interval

Colon (C18)
(Trends in number of cases per year)



Colon (C18)

(Trends in age-standardised incidence rates)



NOTES

European Age Standardised Incidence Rate

The incidence rate per 100,000 persons that has been adjusted to take account of different age structures between geographic areas or time periods. This is done by adopting the European standard as a reference population. The EASIR can be considered to be the number of cases per 100,000 persons occurring in the population if the population possessed the same age structure as the European standard population.

World Age Standardised Incidence Rate

As for the European age-standardised rate but using the World standard population.

Confidence Interval

The range of values calculated to have a specified (usually 95%) probability of containing the true value of an observation. Thus the 95% confidence interval for a rate is the range of values within which there is a 95% probability of finding the true value for the rate.