

Number of cases and incidence rates by sex: 2005-2009

Colorectal (C18-C21)

Sex	Number of cases	Average number of cases per year	Percentage of all cancers ex. NMSC	Crude rate per 100,000	European age-standardised incidence rate per 100,000 (95% CI)	World age-standardised incidence rate per 100,000 (95% CI)	Odds of developing the disease before age 75 = 1 in:
Male	3,024	605	15.2	70.2	66.2 (63.8,68.6)	44.0 (42.4,45.7)	19.5
Female	2,425	485	12.4	54.1	41.1 (39.4,42.8)	27.5 (26.2,28.7)	31.5
All persons	5,449	1,090	13.8	62.0	52.3 (50.8,53.7)	35.0 (34.0,35.9)	24.4

NOTES:

NMSC: Non-melanoma skin cancer

CI: Confidence interval

**Number of cases and incidence rates by sex and year of diagnosis
Colorectal (C18-C21)**

Male

Year of diagnosis	Number of cases	Percentage of all cancers ex. NMSC	Crude rate per 100,000 males	European age standardised incidence rate per 100,000 males (95% CI)	World age standardised incidence rate per 100,000 males (95% CI)
1993	475	15.2	59.5	66.4 (60.4,72.5)	44.2 (40.1,48.3)
1994	482	15.5	60.1	66.1 (60.1,72.1)	44.1 (40.1,48.2)
1995	491	16.1	61.1	66.6 (60.6,72.6)	43.5 (39.6,47.5)
1996	502	15.9	61.9	67.3 (61.4,73.3)	45.2 (41.1,49.3)
1997	455	15.0	55.8	59.5 (54.0,65.0)	38.9 (35.1,42.6)
1998	490	15.7	59.9	63.9 (58.1,69.6)	42.3 (38.4,46.2)
1999	448	14.9	54.7	57.5 (52.1,62.9)	38.4 (34.7,42.0)
2000	457	14.6	55.7	58.0 (52.7,63.4)	38.8 (35.1,42.5)
2001	533	16.2	64.7	66.1 (60.5,71.8)	44.3 (40.4,48.2)
2002	468	14.1	56.5	57.4 (52.1,62.7)	38.1 (34.5,41.7)
2003	560	16.1	67.2	66.6 (61.1,72.2)	44.2 (40.4,48.0)
2004	521	14.6	62.3	61.1 (55.8,66.4)	41.0 (37.3,44.6)
2005	582	16.1	68.9	66.1 (60.7,71.5)	44.1 (40.4,47.8)
2006	576	15.3	67.5	64.3 (59.0,69.6)	42.4 (38.8,46.0)
2007	650	16.1	75.4	71.2 (65.6,76.7)	47.7 (43.9,51.5)
2008	599	14.4	68.8	65.0 (59.8,70.2)	44.0 (40.3,47.6)
2009	617	14.5	70.2	64.4 (59.3,69.5)	42.0 (38.5,45.4)

Female

Year of diagnosis	Number of cases	Percentage of all cancers ex. NMSC	Crude rate per 100,000 females	European age standardised incidence rate per 100,000 females (95% CI)	World age standardised incidence rate per 100,000 females (95% CI)
1993	452	14.2	54.0	44.7 (40.3,49.1)	29.9 (26.8,33.0)
1994	433	13.9	51.4	42.8 (38.6,47.1)	28.5 (25.4,31.5)
1995	495	15.6	58.6	47.7 (43.3,52.2)	31.8 (28.6,34.9)
1996	468	14.3	55.0	44.8 (40.5,49.1)	29.9 (26.8,32.9)
1997	456	13.9	53.3	42.1 (38.0,46.2)	27.8 (24.9,30.7)
1998	442	13.4	51.4	43.4 (39.1,47.7)	29.5 (26.5,32.6)
1999	456	13.6	53.0	41.8 (37.7,45.8)	27.8 (24.9,30.6)
2000	425	12.5	49.3	40.7 (36.6,44.7)	27.4 (24.5,30.4)
2001	432	13.1	49.9	40.1 (36.2,44.1)	27.0 (24.2,29.9)
2002	447	12.8	51.5	41.3 (37.3,45.3)	27.9 (25.0,30.8)
2003	453	12.6	52.1	39.9 (36.0,43.8)	26.7 (23.9,29.4)
2004	473	13.0	54.1	42.8 (38.7,46.8)	28.9 (26.1,31.8)
2005	428	11.7	48.6	37.2 (33.5,40.9)	24.9 (22.3,27.5)
2006	488	13.1	54.9	41.7 (37.8,45.6)	27.4 (24.7,30.1)
2007	518	13.3	57.7	44.1 (40.1,48.1)	29.5 (26.7,32.4)
2008	516	12.6	57.1	43.2 (39.3,47.2)	29.0 (26.3,31.8)
2009	475	11.3	52.2	39.4 (35.7,43.2)	26.5 (23.8,29.1)

All persons

Year of diagnosis	Number of cases	Percentage of all cancers ex. NMSC	Crude rate per 100,000 persons	European age standardised incidence rate per 100,000 persons (95% CI)	World age standardised incidence rate per 100,000 persons (95% CI)
1993	927	14.7	56.7	53.8 (50.2,57.4)	36.0 (33.5,38.5)
1994	915	14.7	55.7	52.6 (49.1,56.1)	35.2 (32.7,37.6)
1995	986	15.8	59.8	55.2 (51.7,58.8)	36.6 (34.1,39.0)
1996	970	15.1	58.4	54.4 (50.8,57.9)	36.5 (34.1,39.0)
1997	911	14.4	54.5	49.4 (46.1,52.7)	32.6 (30.3,34.8)
1998	932	14.5	55.5	51.7 (48.2,55.1)	34.8 (32.4,37.2)
1999	904	14.2	53.8	48.5 (45.3,51.7)	32.4 (30.1,34.7)
2000	882	13.5	52.4	48.2 (44.9,51.4)	32.4 (30.1,34.7)
2001	965	14.7	57.1	51.5 (48.1,54.8)	34.7 (32.4,37.1)
2002	915	13.4	53.9	48.1 (44.9,51.3)	32.3 (30.0,34.5)
2003	1,013	14.3	59.5	51.6 (48.3,54.8)	34.5 (32.2,36.7)
2004	994	13.8	58.1	51.0 (47.7,54.2)	34.4 (32.1,36.7)
2005	1,010	13.9	58.6	50.0 (46.9,53.2)	33.6 (31.4,35.8)
2006	1,064	14.2	61.1	51.7 (48.5,54.9)	34.2 (32.0,36.4)
2007	1,168	14.7	66.4	56.2 (52.9,59.5)	37.8 (35.5,40.1)
2008	1,115	13.5	62.8	53.1 (49.9,56.3)	35.9 (33.7,38.2)
2009	1,092	12.9	61.0	50.2 (47.2,53.3)	33.3 (31.2,35.4)

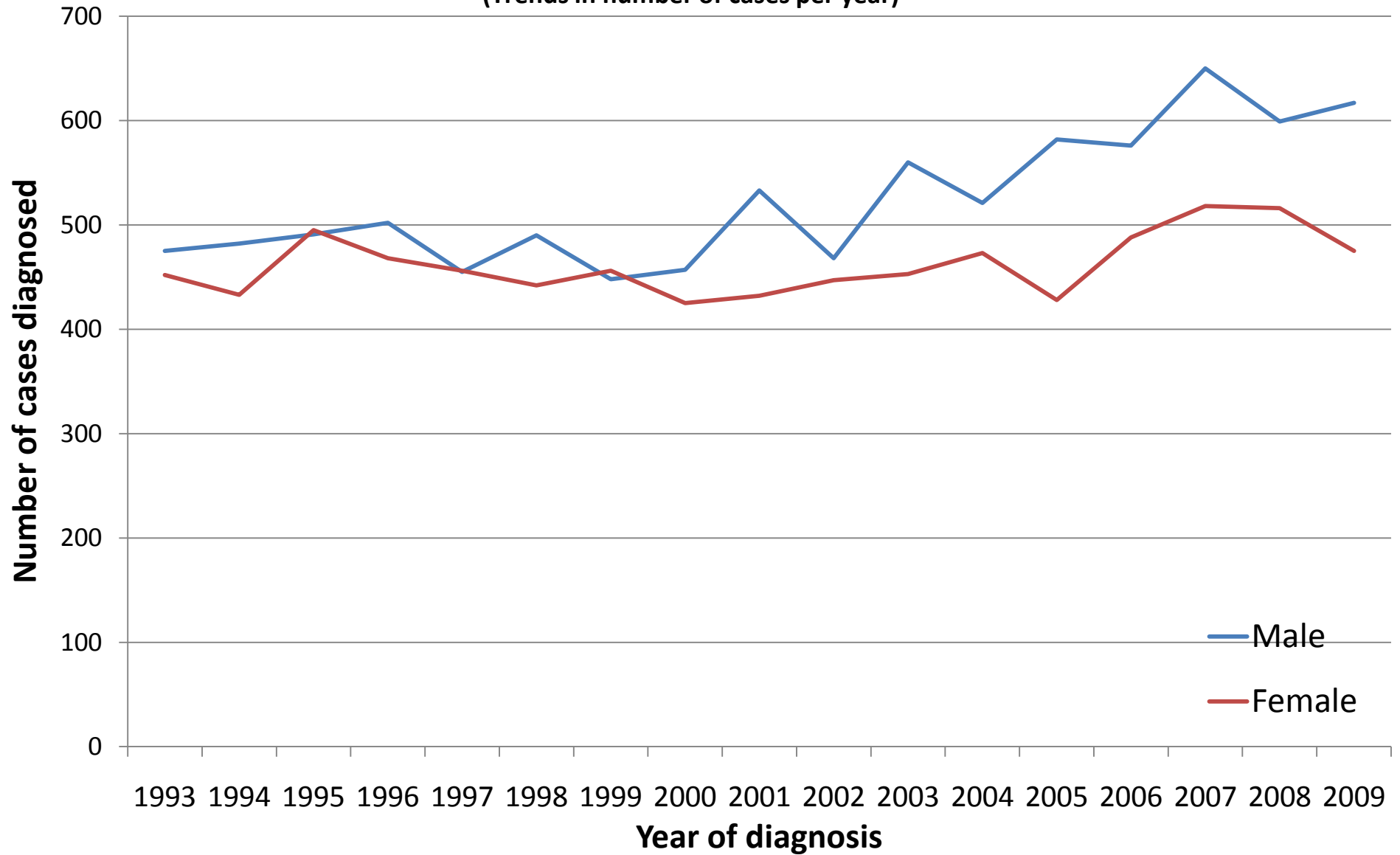
NOTES:

NMSC: Non-melanoma skin cancer

CI: Confidence interval

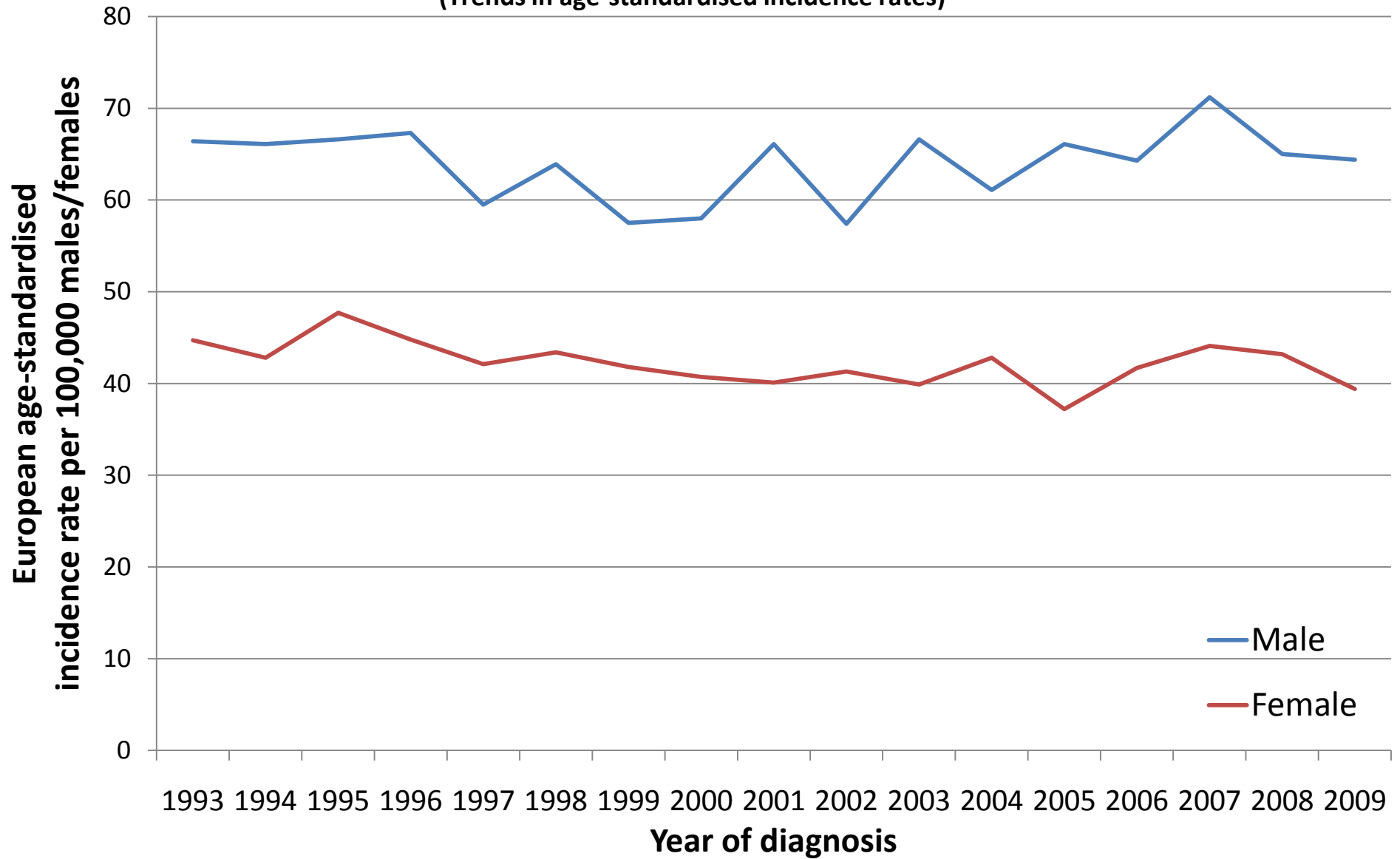
Colorectal (C18-C21)

(Trends in number of cases per year)



Colorectal (C18-C21)

(Trends in age-standardised incidence rates)



NOTES

European Age Standardised Incidence Rate

The incidence rate per 100,000 persons that has been adjusted to take account of different age structures between geographic areas or time periods. This is done by adopting the European standard as a reference population. The EASIR can be considered to be the number of cases per 100,000 persons occurring in the population if the population possessed the same age structure as the European standard population.

World Age Standardised Incidence Rate

As for the European age-standardised rate but using the World standard population.

Confidence Interval

The range of values calculated to have a specified (usually 95%) probability of containing the true value of an observation. Thus the 95% confidence interval for a rate is the range of values within which there is a 95% probability of finding the true value for the rate.