

Number of cases and incidence rates by sex: 2005-2009

Liver (C22)

Sex	Number of cases	Average number of cases per year	Percentage of all cancers ex. NMSC	Crude rate per 100,000	European age-standardised incidence rate per 100,000 (95% CI)	World age-standardised incidence rate per 100,000 (95% CI)	Odds of developing the disease before age 75 = 1 in:
Male	266	53	1.3	6.2	5.8 (5.1,6.5)	3.9 (3.4,4.4)	216.1
Female	132	26	0.7	2.9	2.2 (1.8,2.6)	1.5 (1.2,1.7)	638.0
All persons	398	80	1.0	4.5	3.8 (3.4,4.2)	2.6 (2.3,2.9)	331.9

NOTES:

NMSC: Non-melanoma skin cancer

CI: Confidence interval

Number of cases and incidence rates by sex and year of diagnosis
Liver (C22)

Male

Year of diagnosis	Number of cases	Percentage of all cancers ex. NMSC	Crude rate per 100,000 males	European age standardised incidence rate per 100,000 males (95% CI)	World age standardised incidence rate per 100,000 males (95% CI)
1993	32	1.0	4.0	4.5 (2.9,6.0)	2.9 (1.8,3.9)
1994	25	0.8	3.1	3.6 (2.2,5.0)	2.3 (1.4,3.3)
1995	32	1.0	4.0	4.4 (2.9,6.0)	3.1 (2.0,4.2)
1996	33	1.0	4.1	4.4 (2.9,5.9)	3.0 (1.9,4.1)
1997	32	1.1	3.9	4.0 (2.6,5.4)	2.7 (1.7,3.6)
1998	26	0.8	3.2	3.3 (2.0,4.6)	2.4 (1.4,3.3)
1999	19	0.6	2.3	2.6 (1.4,3.8)	2.0 (1.1,2.9)
2000	34	1.1	4.1	4.2 (2.8,5.6)	2.9 (1.9,3.9)
2001	17	0.5	2.1	2.2 (1.1,3.2)	1.4 (0.7,2.0)
2002	41	1.2	4.9	4.9 (3.4,6.5)	3.3 (2.2,4.3)
2003	34	1.0	4.1	4.1 (2.7,5.5)	2.9 (1.8,3.9)
2004	31	0.9	3.7	3.7 (2.4,5.0)	2.5 (1.6,3.4)
2005	44	1.2	5.2	4.9 (3.5,6.4)	3.3 (2.3,4.3)
2006	54	1.4	6.3	6.1 (4.4,7.7)	3.9 (2.8,5.0)
2007	56	1.4	6.5	6.3 (4.6,7.9)	4.4 (3.2,5.7)
2008	51	1.2	5.9	5.5 (4.0,7.0)	3.8 (2.7,4.8)
2009	61	1.4	6.9	6.3 (4.7,8.0)	4.1 (3.1,5.2)

Female

Year of diagnosis	Number of cases	Percentage of all cancers ex. NMSC	Crude rate per 100,000 females	European age standardised incidence rate per 100,000 females (95% CI)	World age standardised incidence rate per 100,000 females (95% CI)
1993	33	1.0	3.9	3.2 (2.0,4.3)	2.0 (1.3,2.8)
1994	29	0.9	3.4	2.7 (1.6,3.7)	1.7 (1.0,2.4)
1995	17	0.5	2.0	1.7 (0.9,2.6)	1.2 (0.6,1.9)
1996	30	0.9	3.5	2.6 (1.6,3.6)	1.7 (1.1,2.4)
1997	27	0.8	3.2	2.1 (1.2,3.0)	1.3 (0.7,1.9)
1998	20	0.6	2.3	2.0 (1.1,3.0)	1.4 (0.7,2.1)
1999	28	0.8	3.3	2.3 (1.4,3.2)	1.4 (0.8,2.0)
2000	30	0.9	3.5	2.9 (1.8,3.9)	2.0 (1.2,2.8)
2001	8	0.2	0.9	0.9 (0.3,1.5)	0.6 (0.2,1.1)
2002	25	0.7	2.9	2.4 (1.4,3.3)	1.7 (1.0,2.5)
2003	19	0.5	2.2	1.6 (0.9,2.4)	1.3 (0.5,2.0)
2004	17	0.5	1.9	1.5 (0.8,2.3)	1.0 (0.5,1.6)
2005	23	0.6	2.6	2.0 (1.1,2.8)	1.4 (0.8,2.0)
2006	33	0.9	3.7	2.6 (1.7,3.6)	1.7 (1.0,2.3)
2007	29	0.7	3.2	2.4 (1.5,3.4)	1.6 (1.0,2.3)
2008	27	0.7	3.0	2.2 (1.3,3.1)	1.6 (0.9,2.3)
2009	20	0.5	2.2	1.6 (0.8,2.3)	1.0 (0.5,1.5)

All persons

Year of diagnosis	Number of cases	Percentage of all cancers ex. NMSC	Crude rate per 100,000 persons	European age standardised incidence rate per 100,000 persons (95% CI)	World age standardised incidence rate per 100,000 persons (95% CI)
1993	65	1.0	4.0	3.7 (2.8,4.6)	2.4 (1.8,3.0)
1994	54	0.9	3.3	3.0 (2.2,3.9)	2.0 (1.4,2.6)
1995	49	0.8	3.0	2.9 (2.1,3.8)	2.1 (1.4,2.7)
1996	63	1.0	3.8	3.4 (2.5,4.3)	2.3 (1.7,2.9)
1997	59	0.9	3.5	3.0 (2.2,3.8)	2.0 (1.4,2.5)
1998	46	0.7	2.7	2.6 (1.8,3.4)	1.8 (1.3,2.4)
1999	47	0.7	2.8	2.5 (1.8,3.3)	1.7 (1.2,2.3)
2000	64	1.0	3.8	3.5 (2.6,4.4)	2.4 (1.8,3.0)
2001	25	0.4	1.5	1.4 (0.8,1.9)	0.9 (0.5,1.3)
2002	66	1.0	3.9	3.4 (2.6,4.3)	2.4 (1.8,3.0)
2003	53	0.7	3.1	2.8 (2.0,3.5)	2.0 (1.4,2.6)
2004	48	0.7	2.8	2.5 (1.8,3.2)	1.7 (1.2,2.2)
2005	67	0.9	3.9	3.3 (2.5,4.1)	2.2 (1.7,2.8)
2006	87	1.2	5.0	4.2 (3.3,5.1)	2.7 (2.1,3.3)
2007	85	1.1	4.8	4.2 (3.3,5.1)	2.9 (2.2,3.6)
2008	78	0.9	4.4	3.7 (2.9,4.6)	2.6 (2.0,3.2)
2009	81	1.0	4.5	3.7 (2.9,4.5)	2.4 (1.9,3.0)

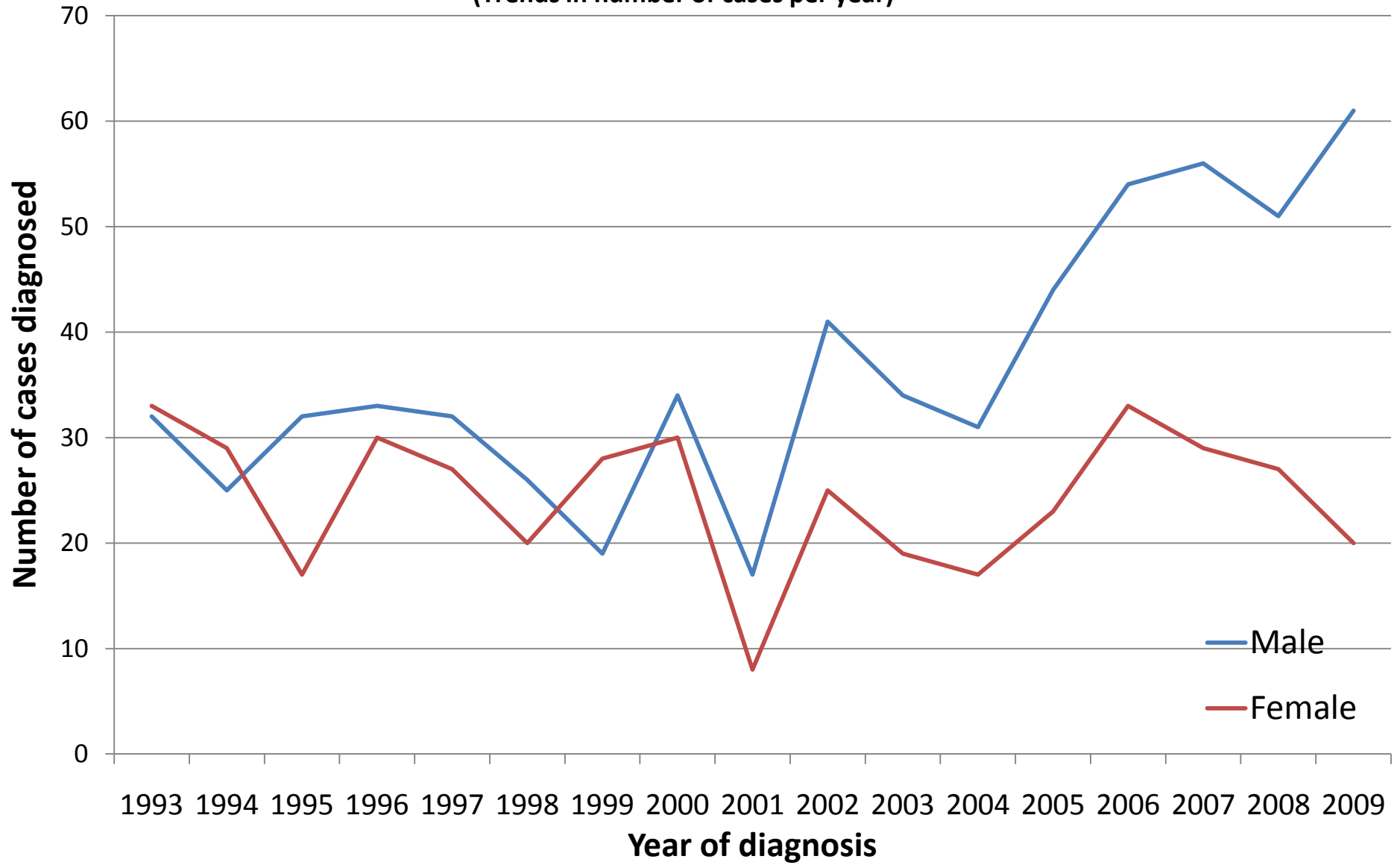
NOTES:

NMSC: Non-melanoma skin cancer

CI: Confidence interval

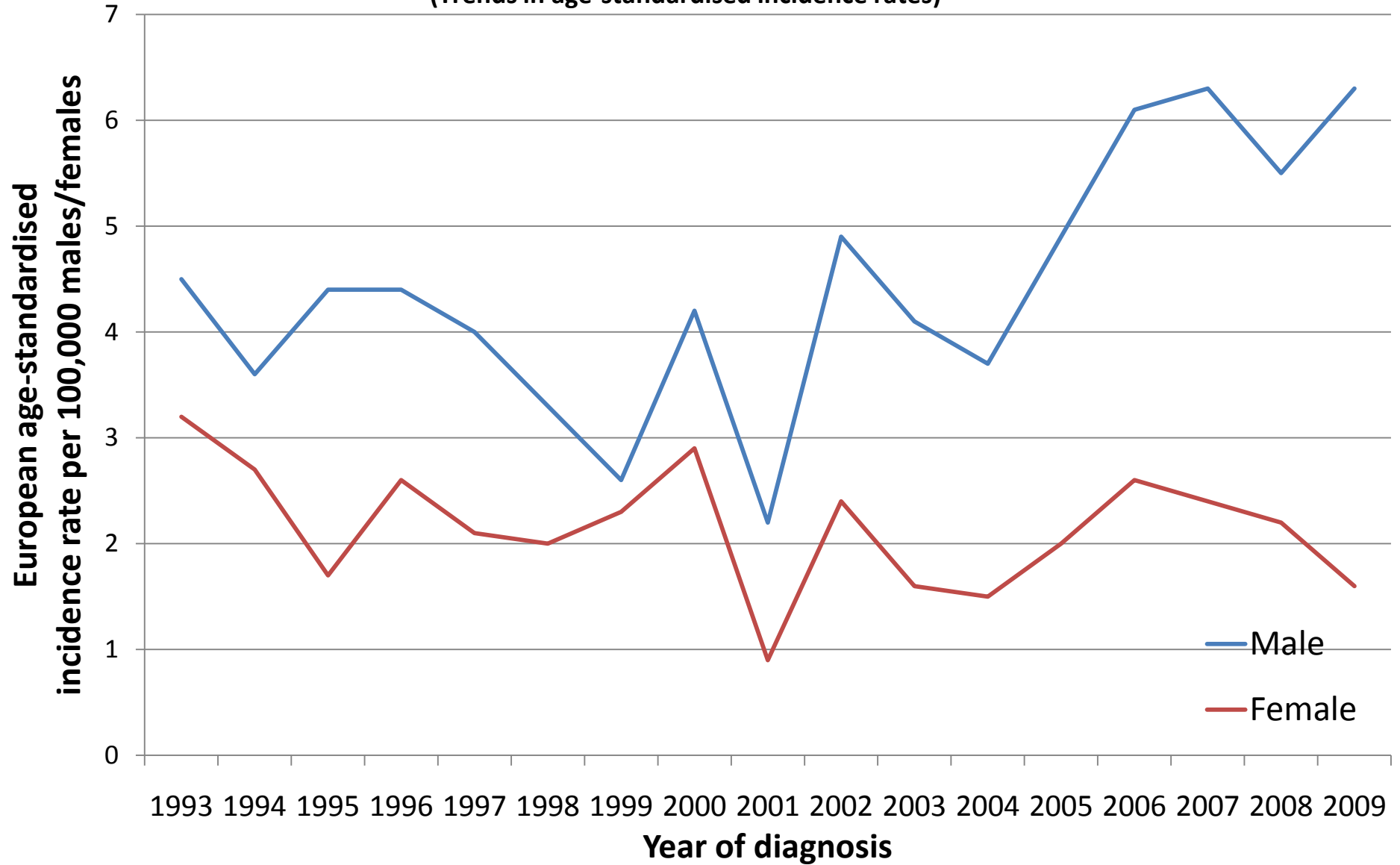
Liver (C22)

(Trends in number of cases per year)



Liver (C22)

(Trends in age-standardised incidence rates)



NOTES

European Age Standardised Incidence Rate

The incidence rate per 100,000 persons that has been adjusted to take account of different age structures between geographic areas or time periods. This is done by adopting the European standard as a reference population. The EASIR can be considered to be the number of cases per 100,000 persons occurring in the population if the population possessed the same age structure as the European standard population.

World Age Standardised Incidence Rate

As for the European age-standardised rate but using the World standard population.

Confidence Interval

The range of values calculated to have a specified (usually 95%) probability of containing the true value of an observation. Thus the 95% confidence interval for a rate is the range of values within which there is a 95% probability of finding the true value for the rate.