

Number of cases and incidence rates by sex: 2005-2009

Malignant melanoma (C43)

Sex	Number of cases	Average number of cases per year	Percentage of all cancers ex. NMSC	Crude rate per 100,000	European age-standardised incidence rate per 100,000 (95% CI)	World age-standardised incidence rate per 100,000 (95% CI)	Odds of developing the disease before age 75 = 1 in:
Male	557	111	2.8	12.9	12.5 (11.5,13.6)	9.3 (8.5,10.1)	102.5
Female	749	150	3.8	16.7	15.2 (14.0,16.3)	11.9 (11.0,12.8)	85.6
All persons	1,306	261	3.3	14.9	13.8 (13.0,14.5)	10.5 (9.9,11.2)	93.5

NOTES:

NMSC: Non-melanoma skin cancer

CI: Confidence interval

Number of cases and incidence rates by sex and year of diagnosis
Malignant melanoma (C43)

Male

Year of diagnosis	Number of cases	Percentage of all cancers ex. NMSC	Crude rate per 100,000 males	European age standardised incidence rate per 100,000 males (95% CI)	World age standardised incidence rate per 100,000 males (95% CI)
1993	58	1.9	7.3	8.3 (6.2,10.5)	6.2 (4.6,7.8)
1994	68	2.2	8.5	9.2 (7.0,11.5)	7.2 (5.4,8.9)
1995	68	2.2	8.5	9.3 (7.1,11.6)	6.8 (5.2,8.5)
1996	69	2.2	8.5	9.4 (7.2,11.6)	7.2 (5.5,9.0)
1997	66	2.2	8.1	8.8 (6.6,10.9)	6.4 (4.8,8.0)
1998	62	2.0	7.6	8.1 (6.1,10.2)	6.0 (4.4,7.5)
1999	69	2.3	8.4	8.7 (6.6,10.8)	6.3 (4.8,7.9)
2000	75	2.4	9.1	9.7 (7.5,12.0)	7.5 (5.8,9.3)
2001	88	2.7	10.7	11.0 (8.7,13.3)	8.3 (6.5,10.1)
2002	101	3.0	12.2	12.5 (10.0,14.9)	9.5 (7.6,11.4)
2003	83	2.4	10.0	10.3 (8.1,12.5)	7.6 (6.0,9.3)
2004	108	3.0	12.9	12.8 (10.4,15.3)	9.3 (7.5,11.2)
2005	99	2.7	11.7	11.7 (9.4,14.0)	8.8 (7.0,10.6)
2006	108	2.9	12.7	12.5 (10.1,14.9)	9.1 (7.4,10.9)
2007	95	2.3	11.0	10.7 (8.5,12.9)	8.3 (6.5,10.0)
2008	136	3.3	15.6	15.0 (12.5,17.6)	11.0 (9.1,12.9)
2009	119	2.8	13.5	12.7 (10.4,15.0)	9.1 (7.4,10.8)

Female

Year of diagnosis	Number of cases	Percentage of all cancers ex. NMSC	Crude rate per 100,000 females	European age standardised incidence rate per 100,000 females (95% CI)	World age standardised incidence rate per 100,000 females (95% CI)
1993	124	3.9	14.8	14.0 (11.5,16.6)	11.5 (9.4,13.7)
1994	110	3.5	13.1	12.6 (10.2,15.1)	10.0 (8.0,12.0)
1995	101	3.2	12.0	11.4 (9.1,13.8)	9.1 (7.2,11.0)
1996	105	3.2	12.3	12.0 (9.6,14.3)	9.6 (7.6,11.5)
1997	94	2.9	11.0	10.5 (8.3,12.7)	8.7 (6.9,10.6)
1998	115	3.5	13.4	12.1 (9.8,14.5)	9.2 (7.3,11.0)
1999	110	3.3	12.8	12.2 (9.9,14.6)	9.9 (8.0,11.9)
2000	112	3.3	13.0	12.0 (9.7,14.3)	9.2 (7.4,11.1)
2001	132	4.0	15.3	13.9 (11.4,16.3)	10.7 (8.7,12.6)
2002	146	4.2	16.8	15.7 (13.1,18.3)	12.4 (10.2,14.6)
2003	129	3.6	14.8	13.3 (10.9,15.6)	10.2 (8.3,12.0)
2004	136	3.7	15.6	14.5 (12.0,17.0)	11.5 (9.4,13.5)
2005	132	3.6	15.0	13.4 (11.1,15.8)	10.8 (8.8,12.8)
2006	151	4.1	17.0	15.4 (12.9,17.9)	12.2 (10.1,14.3)
2007	139	3.6	15.5	13.9 (11.5,16.2)	11.1 (9.1,13.1)
2008	164	4.0	18.1	16.6 (14.0,19.2)	13.0 (10.9,15.1)
2009	163	3.9	17.9	16.5 (13.9,19.1)	12.5 (10.5,14.5)

All persons

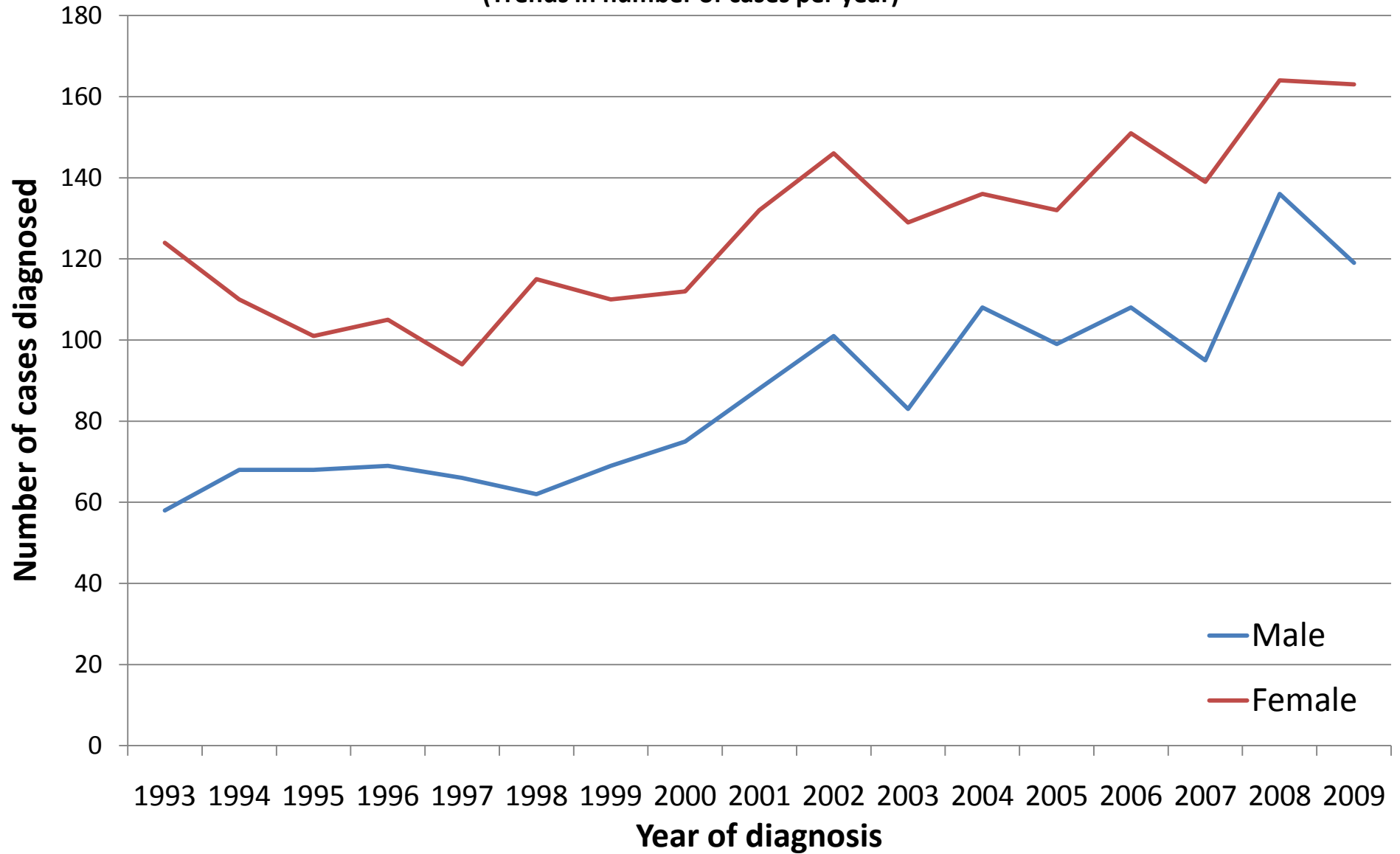
Year of diagnosis	Number of cases	Percentage of all cancers ex. NMSC	Crude rate per 100,000 persons	European age standardised incidence rate per 100,000 persons (95% CI)	World age standardised incidence rate per 100,000 persons (95% CI)
1993	182	2.9	11.1	11.2 (9.6,12.9)	8.9 (7.5,10.2)
1994	178	2.9	10.8	11.1 (9.4,12.7)	8.7 (7.3,10.0)
1995	169	2.7	10.2	10.4 (8.8,12.0)	8.0 (6.7,9.2)
1996	174	2.7	10.5	10.7 (9.1,12.3)	8.4 (7.1,9.7)
1997	160	2.5	9.6	9.5 (8.0,11.0)	7.5 (6.3,8.7)
1998	177	2.7	10.5	10.3 (8.7,11.8)	7.6 (6.4,8.8)
1999	179	2.8	10.7	10.3 (8.8,11.8)	8.1 (6.8,9.3)
2000	187	2.9	11.1	11.0 (9.4,12.5)	8.4 (7.2,9.7)
2001	220	3.3	13.0	12.4 (10.8,14.1)	9.5 (8.2,10.8)
2002	247	3.6	14.6	14.0 (12.3,15.8)	10.9 (9.5,12.4)
2003	212	3.0	12.5	11.9 (10.3,13.6)	9.0 (7.7,10.2)
2004	244	3.4	14.3	13.4 (11.7,15.1)	10.3 (8.9,11.7)
2005	231	3.2	13.4	12.5 (10.9,14.2)	9.8 (8.4,11.1)
2006	259	3.5	14.9	13.9 (12.2,15.6)	10.6 (9.3,12.0)
2007	234	2.9	13.3	12.3 (10.7,13.9)	9.7 (8.4,11.0)
2008	300	3.6	16.9	15.6 (13.8,17.4)	11.9 (10.5,13.3)
2009	282	3.3	15.8	14.4 (12.7,16.1)	10.7 (9.4,12.0)

NOTES:

NMSC: Non-melanoma skin cancer

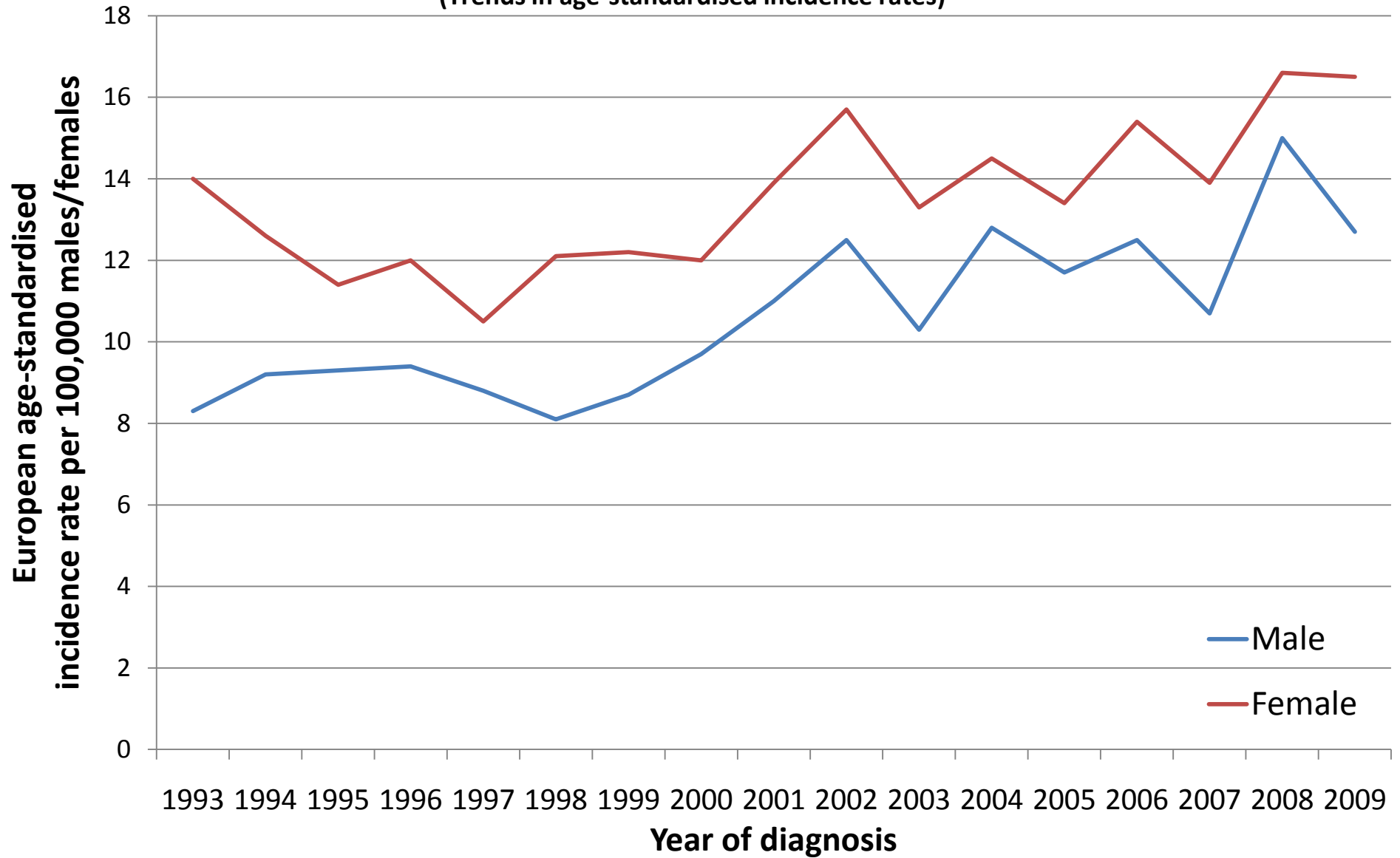
CI: Confidence interval

Malignant melanoma (C43) (Trends in number of cases per year)



Malignant melanoma (C43)

(Trends in age-standardised incidence rates)



NOTES

European Age Standardised Incidence Rate

The incidence rate per 100,000 persons that has been adjusted to take account of different age structures between geographic areas or time periods. This is done by adopting the European standard as a reference population. The EASIR can be considered to be the number of cases per 100,000 persons occurring in the population if the population possessed the same age structure as the European standard population.

World Age Standardised Incidence Rate

As for the European age-standardised rate but using the World standard population.

Confidence Interval

The range of values calculated to have a specified (usually 95%) probability of containing the true value of an observation. Thus the 95% confidence interval for a rate is the range of values within which there is a 95% probability of finding the true value for the rate.