

Number of cases and incidence rates by sex: 2005-2009

Non-melanoma skin (C44)

Sex	Number of cases	Average number of cases per year	Percentage of all cancers ex. NMSC	Crude rate per 100,000	European age-standardised incidence rate per 100,000 (95% CI)	World age-standardised incidence rate per 100,000 (95% CI)	Odds of developing the disease before age 75 = 1 in:
Male	7,766	1,553	0.0	180.2	169.2 (165.4,172.9)	111.4 (108.8,113.9)	8.5
Female	6,570	1,314	0.0	146.7	110.0 (107.2,112.8)	74.2 (72.2,76.2)	12.7
All persons	14,336	2,867	0.0	163.1	135.5 (133.2,137.8)	90.5 (88.9,92.1)	10.3

NOTES:

CI: Confidence interval

Number of cases and incidence rates by sex and year of diagnosis
Non-melanoma skin (C44)

Male

Year of diagnosis	Number of cases	Crude rate per 100,000 males	European age standardised incidence rate per 100,000 males (95% CI)	World age standardised incidence rate per 100,000 males (95% CI)
1993	995	124.7	139.0 (130.2,147.7)	91.7 (85.8,97.6)
1994	1,058	131.9	145.8 (136.9,154.7)	96.4 (90.4,102.4)
1995	1,023	127.2	140.2 (131.5,148.9)	93.1 (87.2,99.0)
1996	1,074	132.5	143.8 (135.1,152.5)	95.7 (89.8,101.7)
1997	1,123	137.7	148.3 (139.6,157.1)	97.5 (91.6,103.5)
1998	1,107	135.2	144.3 (135.7,152.9)	94.4 (88.6,100.1)
1999	1,186	144.9	151.1 (142.4,159.8)	99.1 (93.2,104.9)
2000	1,162	141.6	147.1 (138.5,155.6)	96.5 (90.8,102.3)
2001	1,126	136.6	139.8 (131.6,148.0)	91.5 (85.9,97.0)
2002	1,285	155.0	155.8 (147.2,164.4)	102.9 (97.1,108.8)
2003	1,287	154.5	153.6 (145.1,162.1)	102.3 (96.5,108.1)
2004	1,211	144.8	141.3 (133.3,149.4)	92.4 (87.0,97.8)
2005	1,277	151.3	144.7 (136.7,152.7)	95.8 (90.3,101.2)
2006	1,457	170.7	162.5 (154.1,170.9)	107.4 (101.7,113.1)
2007	1,464	169.8	160.2 (151.9,168.4)	105.7 (100.1,111.3)
2008	1,719	197.4	183.2 (174.5,191.9)	119.8 (113.9,125.6)
2009	1,849	210.4	192.3 (183.4,201.1)	126.4 (120.4,132.4)

Female

Year of diagnosis	Number of cases	Crude rate per 100,000 females	European age standardised incidence rate per 100,000 females (95% CI)	World age standardised incidence rate per 100,000 females (95% CI)
1993	1,086	129.7	106.0 (99.3,112.7)	71.2 (66.5,76.0)
1994	1,036	123.1	100.9 (94.3,107.4)	68.2 (63.5,72.9)
1995	1,032	122.1	98.4 (92.1,104.8)	65.8 (61.3,70.3)
1996	1,159	136.1	109.2 (102.5,115.9)	72.6 (67.9,77.3)
1997	1,071	125.2	99.7 (93.4,106.0)	67.2 (62.6,71.7)
1998	1,058	123.2	98.1 (91.9,104.4)	66.3 (61.8,70.8)
1999	1,063	123.5	99.6 (93.3,105.9)	67.0 (62.5,71.5)
2000	1,044	121.0	96.1 (90.0,102.3)	64.5 (60.1,69.0)
2001	1,028	118.9	93.2 (87.1,99.2)	62.2 (57.9,66.5)
2002	1,089	125.5	95.1 (89.1,101.1)	62.7 (58.5,66.9)
2003	1,123	129.1	97.9 (91.8,103.9)	65.6 (61.2,69.9)
2004	1,062	121.5	90.9 (85.1,96.7)	60.6 (56.4,64.7)
2005	1,119	127.1	98.1 (92.0,104.1)	66.4 (62.1,70.8)
2006	1,259	141.7	106.4 (100.2,112.6)	71.5 (67.0,75.9)
2007	1,315	146.6	110.3 (104.0,116.5)	74.6 (70.0,79.1)
2008	1,425	157.6	117.3 (110.9,123.7)	79.0 (74.4,83.6)
2009	1,452	159.5	117.4 (111.1,123.8)	79.1 (74.5,83.6)

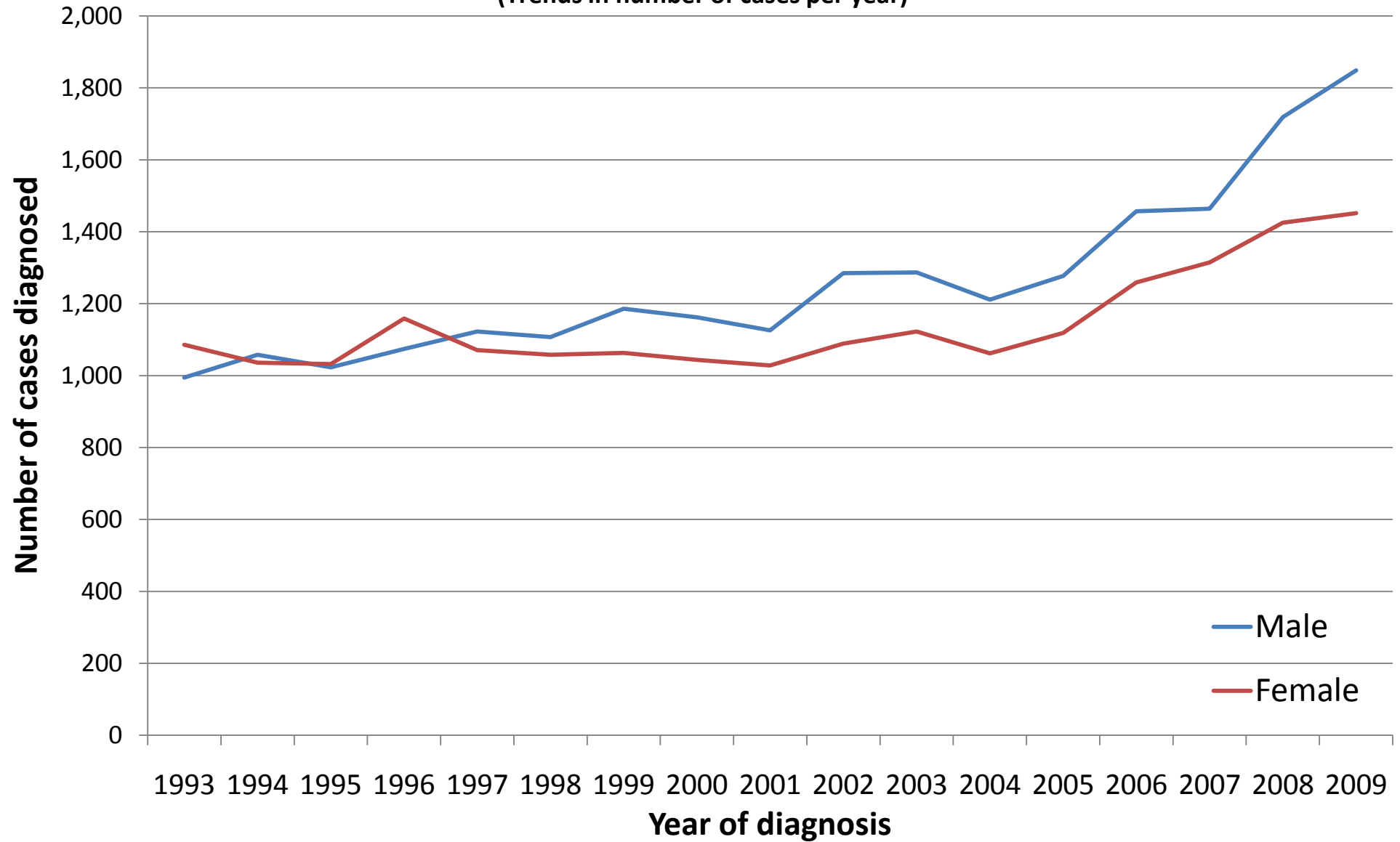
All persons

Year of diagnosis	Number of cases	Crude rate per 100,000 persons	European age standardised incidence rate per 100,000 persons (95% CI)	World age standardised incidence rate per 100,000 persons (95% CI)
1993	2,081	127.2	119.4 (114.1,124.7)	79.7 (76.0,83.4)
1994	2,094	127.4	118.9 (113.7,124.2)	79.8 (76.1,83.5)
1995	2,055	124.6	115.8 (110.7,121.0)	77.5 (73.9,81.1)
1996	2,233	134.4	124.0 (118.7,129.3)	82.7 (79.0,86.4)
1997	2,194	131.3	119.9 (114.7,125.0)	80.0 (76.4,83.6)
1998	2,165	129.0	116.9 (111.9,122.0)	78.0 (74.5,81.6)
1999	2,249	133.9	120.6 (115.5,125.7)	80.4 (76.8,84.0)
2000	2,206	131.1	117.2 (112.2,122.2)	78.1 (74.6,81.6)
2001	2,154	127.5	112.4 (107.5,117.2)	74.6 (71.2,78.0)
2002	2,374	139.9	121.6 (116.6,126.6)	80.6 (77.1,84.1)
2003	2,410	141.5	122.5 (117.5,127.5)	82.1 (78.5,85.6)
2004	2,273	132.9	112.2 (107.4,116.9)	74.3 (71.0,77.6)
2005	2,396	138.9	118.2 (113.3,123.0)	79.3 (75.9,82.8)
2006	2,716	155.9	130.6 (125.6,135.6)	87.3 (83.7,90.8)
2007	2,779	158.0	131.8 (126.7,136.8)	88.2 (84.7,91.8)
2008	3,144	177.1	145.5 (140.3,150.7)	96.8 (93.1,100.4)
2009	3,301	184.5	150.1 (144.8,155.3)	100.1 (96.5,103.8)

NOTES:

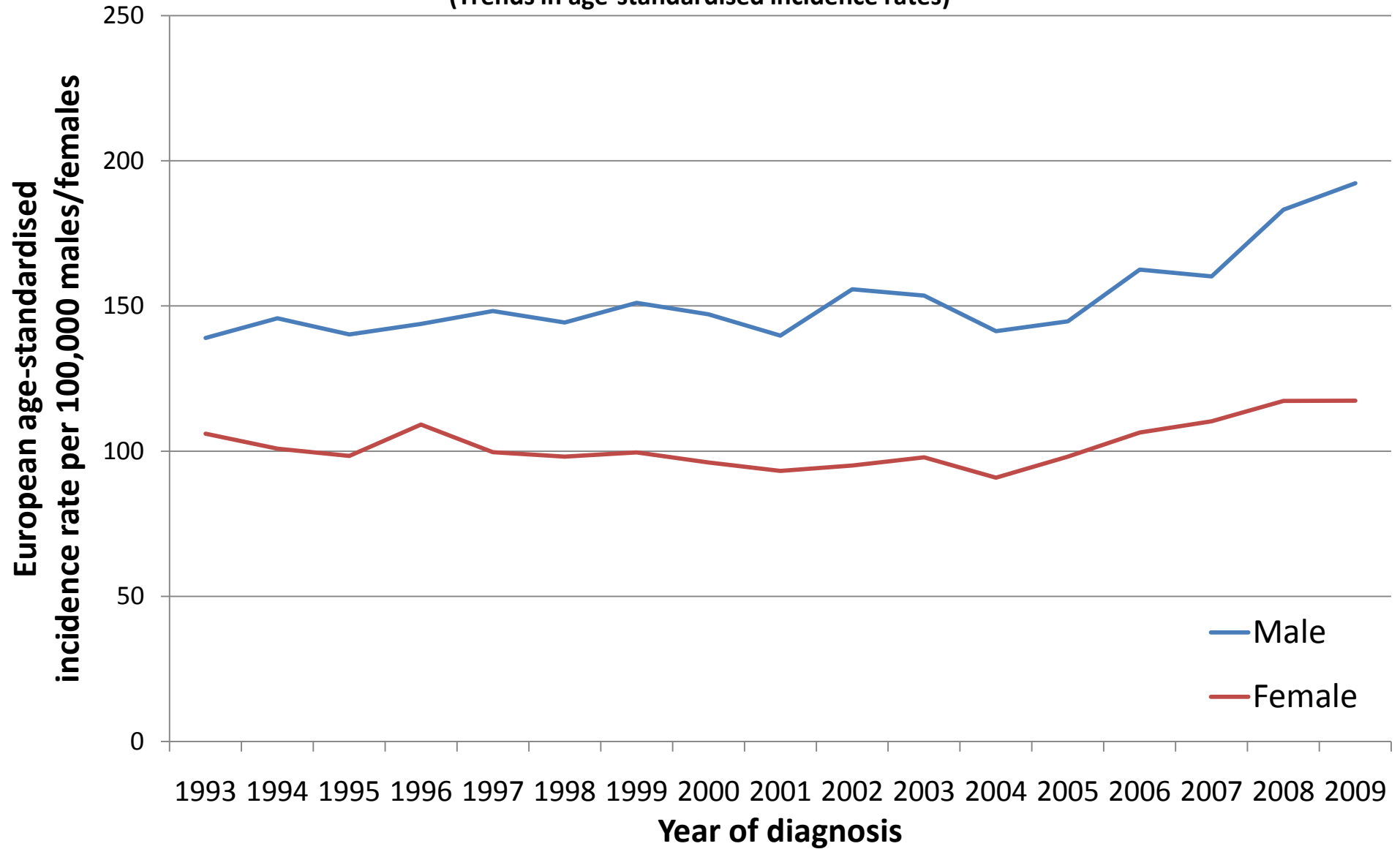
CI: Confidence interval

Non-melanoma skin (C44) (Trends in number of cases per year)



Non-melanoma skin (C44)

(Trends in age-standardised incidence rates)



NOTES

European Age Standardised Incidence Rate

The incidence rate per 100,000 persons that has been adjusted to take account of different age structures between geographic areas or time periods. This is done by adopting the European standard as a reference population. The EASIR can be considered to be the number of cases per 100,000 persons occurring in the population if the population possessed the same age structure as the European standard population.

World Age Standardised Incidence Rate

As for the European age-standardised rate but using the World standard population.

Confidence Interval

The range of values calculated to have a specified (usually 95%) probability of containing the true value of an observation. Thus the 95% confidence interval for a rate is the range of values within which there is a 95% probability of finding the true value for the rate.