

Number of cases and incidence rates: 2005-2009

Testis (C62)

Sex	Number of cases	Average number of cases per year	Percentage of all cancers ex. NMSC	Crude rate per 100,000	European age-standardised incidence rate per 100,000 (95% CI)	World age-standardised incidence rate per 100,000 (95% CI)	Odds of developing the disease before age 75 = 1 in:
Male	291	58	1.5	6.8	6.8 (6.0,7.6)	6.4 (5.7,7.2)	203.7
All persons	291	58	0.7	3.3	3.4 (3.0,3.7)	3.2 (2.8,3.6)	410.1

NOTES:

NMSC: Non-melanoma skin cancer

CI: Confidence interval

Number of cases and incidence rates by year of diagnosis

Testis (C62)

Male

Year of diagnosis	Number of cases	Percentage of all cancers ex. NMSC	Crude rate per 100,000 males	European age standardised incidence rate per 100,000 males (95% CI)	World age standardised incidence rate per 100,000 males (95% CI)
1993	55	1.8	6.9	6.9 (5.0,8.7)	6.3 (4.6,8.0)
1994	47	1.5	5.9	5.8 (4.1,7.4)	5.4 (3.8,7.0)
1995	39	1.3	4.9	4.8 (3.3,6.3)	4.6 (3.1,6.0)
1996	55	1.7	6.8	6.7 (4.9,8.5)	6.2 (4.5,7.8)
1997	48	1.6	5.9	5.8 (4.2,7.5)	5.5 (3.9,7.1)
1998	46	1.5	5.6	5.6 (3.9,7.2)	5.2 (3.7,6.7)
1999	56	1.9	6.8	6.9 (5.1,8.7)	6.3 (4.6,7.9)
2000	68	2.2	8.3	8.0 (6.1,10.0)	7.6 (5.7,9.4)
2001	52	1.6	6.3	6.2 (4.5,8.0)	5.7 (4.1,7.3)
2002	56	1.7	6.8	6.7 (5.0,8.5)	6.3 (4.6,8.0)
2003	56	1.6	6.7	6.7 (4.9,8.5)	6.3 (4.6,8.0)
2004	71	2.0	8.5	8.4 (6.4,10.3)	7.9 (6.0,9.7)
2005	63	1.7	7.5	7.6 (5.7,9.4)	7.2 (5.4,9.1)
2006	50	1.3	5.9	6.0 (4.3,7.6)	5.7 (4.1,7.3)
2007	55	1.4	6.4	6.3 (4.7,8.0)	5.9 (4.3,7.5)
2008	66	1.6	7.6	7.5 (5.7,9.3)	7.2 (5.5,9.0)
2009	57	1.3	6.5	6.5 (4.8,8.2)	6.1 (4.5,7.7)

All persons

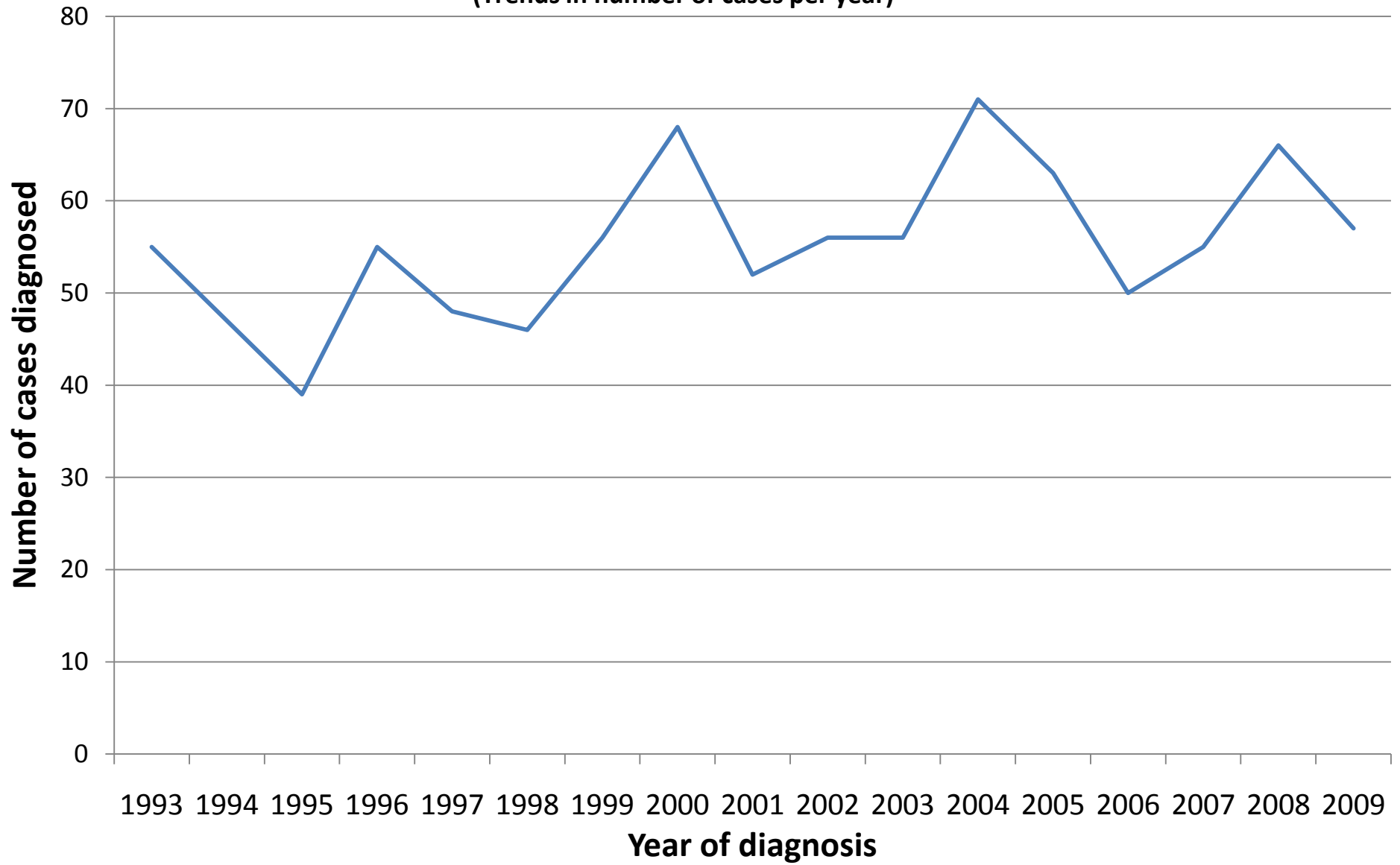
Year of diagnosis	Number of cases	Percentage of all cancers ex. NMSC	Crude rate per 100,000 persons	European age standardised incidence rate per 100,000 persons (95% CI)	World age standardised incidence rate per 100,000 persons (95% CI)
1993	55	0.9	3.4	3.4 (2.5,4.3)	3.1 (2.3,3.9)
1994	47	0.8	2.9	2.9 (2.0,3.7)	2.7 (1.9,3.5)
1995	39	0.6	2.4	2.4 (1.6,3.1)	2.3 (1.5,3.0)
1996	55	0.9	3.3	3.2 (2.4,4.1)	3.0 (2.2,3.8)
1997	48	0.8	2.9	2.9 (2.1,3.7)	2.8 (2.0,3.5)
1998	46	0.7	2.7	2.7 (1.9,3.5)	2.5 (1.8,3.3)
1999	56	0.9	3.3	3.3 (2.5,4.2)	3.1 (2.3,3.9)
2000	68	1.0	4.0	4.0 (3.0,4.9)	3.7 (2.8,4.7)
2001	52	0.8	3.1	3.1 (2.2,3.9)	2.8 (2.0,3.6)
2002	56	0.8	3.3	3.3 (2.5,4.2)	3.1 (2.3,3.9)
2003	56	0.8	3.3	3.3 (2.5,4.2)	3.2 (2.3,4.0)
2004	71	1.0	4.2	4.1 (3.2,5.1)	3.9 (3.0,4.8)
2005	63	0.9	3.7	3.8 (2.8,4.7)	3.6 (2.7,4.5)
2006	50	0.7	2.9	3.0 (2.1,3.8)	2.8 (2.0,3.6)
2007	55	0.7	3.1	3.1 (2.3,4.0)	2.9 (2.1,3.7)
2008	66	0.8	3.7	3.7 (2.8,4.6)	3.6 (2.7,4.5)
2009	57	0.7	3.2	3.2 (2.4,4.1)	3.0 (2.2,3.8)

NOTES:

NMSC: Non-melanoma skin cancer

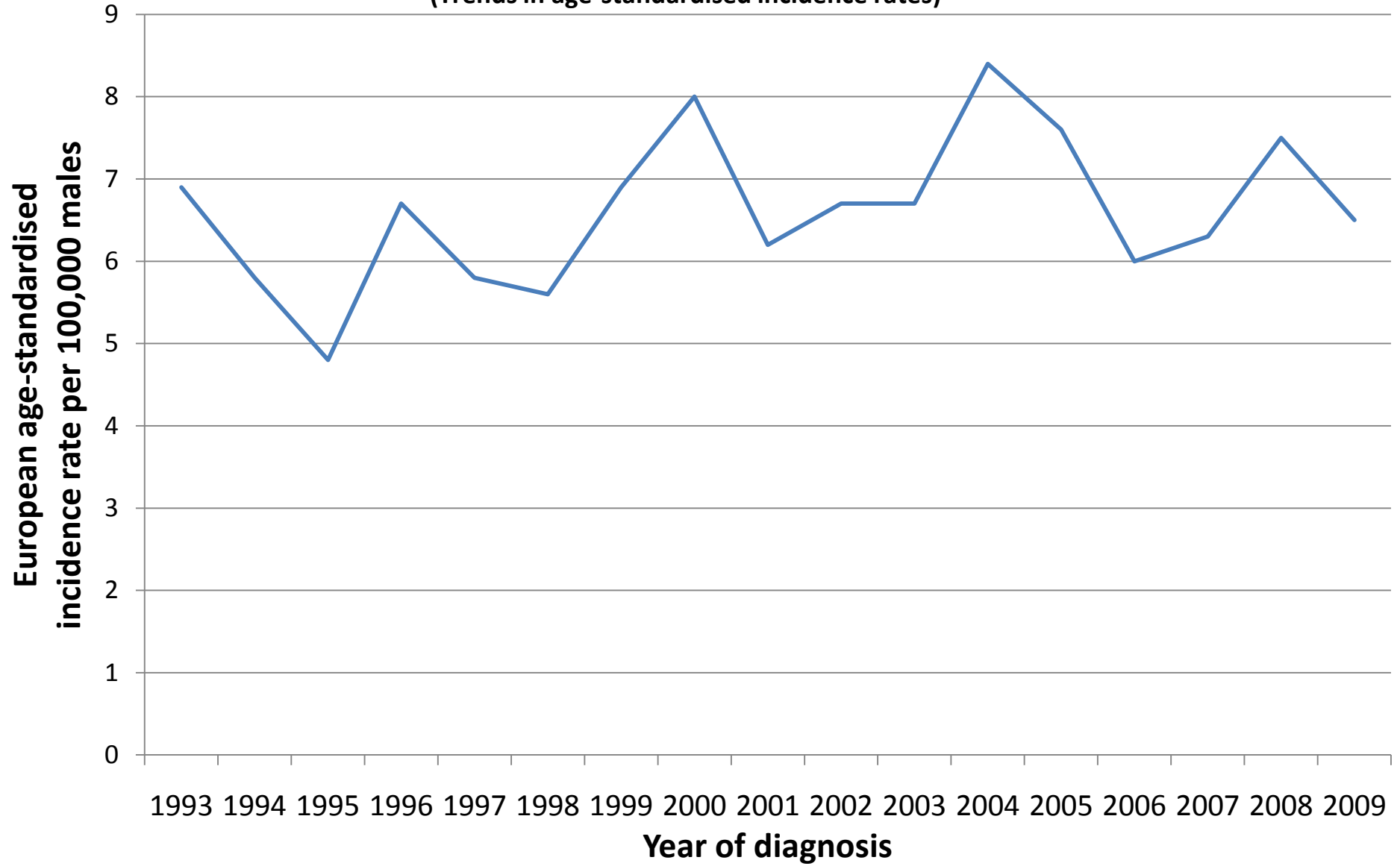
CI: Confidence interval

Testis (C62)
(Trends in number of cases per year)



Testis (C62)

(Trends in age-standardised incidence rates)



NOTES

European Age Standardised Incidence Rate

The incidence rate per 100,000 persons that has been adjusted to take account of different age structures between geographic areas or time periods. This is done by adopting the European standard as a reference population. The EASIR can be considered to be the number of cases per 100,000 persons occurring in the population if the population possessed the same age structure as the European standard population.

World Age Standardised Incidence Rate

As for the European age-standardised rate but using the World standard population.

Confidence Interval

The range of values calculated to have a specified (usually 95%) probability of containing the true value of an observation. Thus the 95% confidence interval for a rate is the range of values within which there is a 95% probability of finding the true value for the rate.