

Number of cases and incidence rates by sex: 2005-2009

Kidney (C64-C66,C68)

Sex	Number of cases	Average number of cases per year	Percentage of all cancers ex. NMSC	Crude rate per 100,000	European age-standardised incidence rate per 100,000 (95% CI)	World age-standardised incidence rate per 100,000 (95% CI)	Odds of developing the disease before age 75 = 1 in:
Male	711	142	3.6	16.5	15.9 (14.7,17.1)	10.9 (10.1,11.7)	75.9
Female	463	93	2.4	10.3	8.3 (7.6,9.1)	5.8 (5.2,6.3)	141.4
All persons	1,174	235	3.0	13.4	11.8 (11.1,12.4)	8.1 (7.6,8.6)	100.3

NOTES:

NMSC: Non-melanoma skin cancer

CI: Confidence interval

**Number of cases and incidence rates by sex and year of diagnosis
Kidney (C64-C66,C68)**

Male

Year of diagnosis	Number of cases	Percentage of all cancers ex. NMSC	Crude rate per 100,000 males	European age standardised incidence rate per 100,000 males (95% CI)	World age standardised incidence rate per 100,000 males (95% CI)
1993	96	3.1	12.0	13.3 (10.6,16.0)	9.4 (7.4,11.3)
1994	113	3.6	14.1	15.5 (12.6,18.4)	11.1 (9.0,13.2)
1995	96	3.1	11.9	13.2 (10.5,15.9)	9.3 (7.4,11.3)
1996	94	3.0	11.6	13.0 (10.3,15.6)	9.1 (7.2,11.0)
1997	99	3.3	12.1	13.1 (10.5,15.7)	9.5 (7.5,11.5)
1998	99	3.2	12.1	12.9 (10.3,15.5)	9.4 (7.4,11.3)
1999	102	3.4	12.5	13.4 (10.8,16.1)	9.2 (7.4,11.1)
2000	93	3.0	11.3	11.9 (9.5,14.3)	8.0 (6.4,9.7)
2001	106	3.2	12.9	13.8 (11.1,16.4)	9.5 (7.6,11.3)
2002	116	3.5	14.0	14.2 (11.6,16.8)	9.9 (8.0,11.9)
2003	130	3.7	15.6	15.7 (13.0,18.5)	10.8 (8.8,12.7)
2004	111	3.1	13.3	12.9 (10.5,15.3)	9.0 (7.2,10.7)
2005	105	2.9	12.4	12.1 (9.7,14.4)	8.2 (6.6,9.9)
2006	134	3.6	15.7	15.6 (13.0,18.3)	10.9 (8.9,12.8)
2007	155	3.8	18.0	17.4 (14.6,20.2)	12.0 (10.0,13.9)
2008	165	4.0	18.9	17.9 (15.2,20.7)	12.3 (10.3,14.2)
2009	152	3.6	17.3	16.3 (13.7,18.9)	11.0 (9.2,12.8)

Female

Year of diagnosis	Number of cases	Percentage of all cancers ex. NMSC	Crude rate per 100,000 females	European age standardised incidence rate per 100,000 females (95% CI)	World age standardised incidence rate per 100,000 females (95% CI)
1993	70	2.2	8.4	7.9 (6.0,9.9)	5.9 (4.4,7.4)
1994	47	1.5	5.6	5.0 (3.5,6.5)	3.5 (2.4,4.6)
1995	68	2.1	8.0	7.6 (5.7,9.5)	5.4 (4.0,6.8)
1996	63	1.9	7.4	6.5 (4.8,8.1)	4.6 (3.3,5.9)
1997	72	2.2	8.4	7.6 (5.8,9.5)	5.6 (4.1,7.1)
1998	75	2.3	8.7	7.2 (5.5,8.9)	5.2 (3.8,6.5)
1999	58	1.7	6.7	6.1 (4.5,7.8)	4.4 (3.1,5.6)
2000	70	2.1	8.1	7.1 (5.4,8.9)	5.2 (3.8,6.5)
2001	64	1.9	7.4	6.5 (4.8,8.1)	4.7 (3.4,6.0)
2002	65	1.9	7.5	6.4 (4.7,8.0)	4.5 (3.2,5.7)
2003	81	2.3	9.3	8.0 (6.2,9.9)	6.1 (4.5,7.6)
2004	80	2.2	9.2	7.6 (5.9,9.3)	5.4 (4.1,6.7)
2005	76	2.1	8.6	7.0 (5.3,8.6)	4.9 (3.6,6.1)
2006	84	2.3	9.5	7.9 (6.1,9.6)	5.4 (4.2,6.7)
2007	83	2.1	9.3	7.8 (6.0,9.5)	5.4 (4.1,6.6)
2008	128	3.1	14.2	11.1 (9.1,13.1)	7.7 (6.2,9.2)
2009	92	2.2	10.1	8.0 (6.3,9.7)	5.4 (4.2,6.6)

All persons

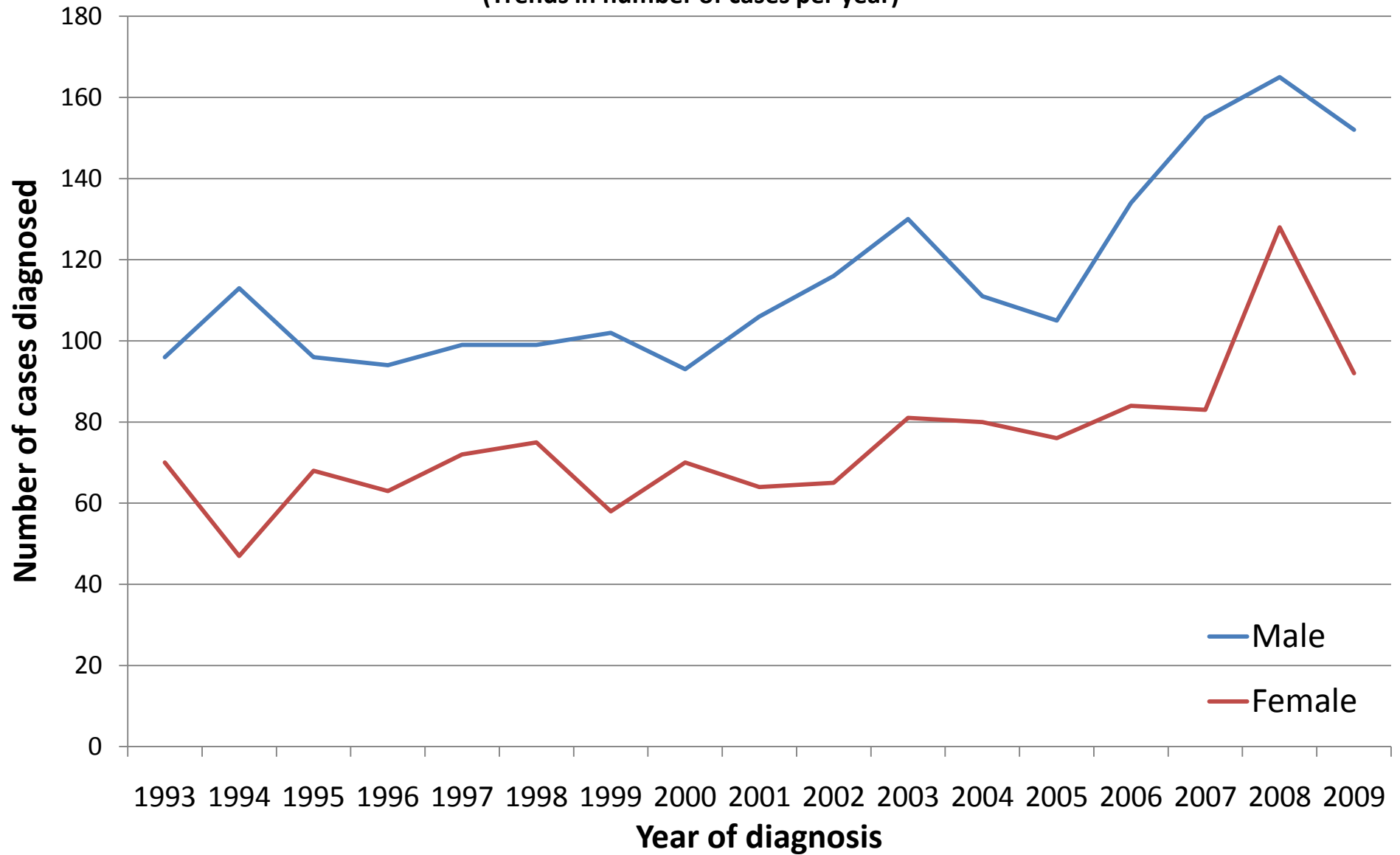
Year of diagnosis	Number of cases	Percentage of all cancers ex. NMSC	Crude rate per 100,000 persons	European age standardised incidence rate per 100,000 persons (95% CI)	World age standardised incidence rate per 100,000 persons (95% CI)
1993	166	2.6	10.1	10.2 (8.6,11.8)	7.4 (6.2,8.6)
1994	160	2.6	9.7	9.5 (8.0,11.0)	6.8 (5.7,8.0)
1995	164	2.6	9.9	10.0 (8.4,11.6)	7.1 (6.0,8.3)
1996	157	2.4	9.4	9.3 (7.8,10.8)	6.6 (5.5,7.7)
1997	171	2.7	10.2	10.0 (8.5,11.6)	7.4 (6.2,8.6)
1998	174	2.7	10.4	9.8 (8.3,11.3)	7.1 (5.9,8.2)
1999	160	2.5	9.5	9.3 (7.8,10.8)	6.5 (5.4,7.6)
2000	163	2.5	9.7	9.2 (7.8,10.6)	6.4 (5.4,7.5)
2001	170	2.6	10.1	9.6 (8.2,11.1)	6.8 (5.7,7.9)
2002	181	2.7	10.7	9.9 (8.4,11.4)	7.0 (5.9,8.1)
2003	211	3.0	12.4	11.3 (9.7,12.9)	8.1 (6.9,9.3)
2004	191	2.7	11.2	10.0 (8.6,11.5)	7.1 (6.0,8.1)
2005	181	2.5	10.5	9.2 (7.8,10.6)	6.4 (5.4,7.4)
2006	218	2.9	12.5	11.3 (9.8,12.8)	7.9 (6.8,9.0)
2007	238	3.0	13.5	12.2 (10.6,13.8)	8.4 (7.3,9.6)
2008	293	3.6	16.5	14.2 (12.6,15.9)	9.8 (8.6,11.0)
2009	244	2.9	13.6	11.7 (10.2,13.2)	8.0 (6.9,9.1)

NOTES:

NMSC: Non-melanoma skin cancer

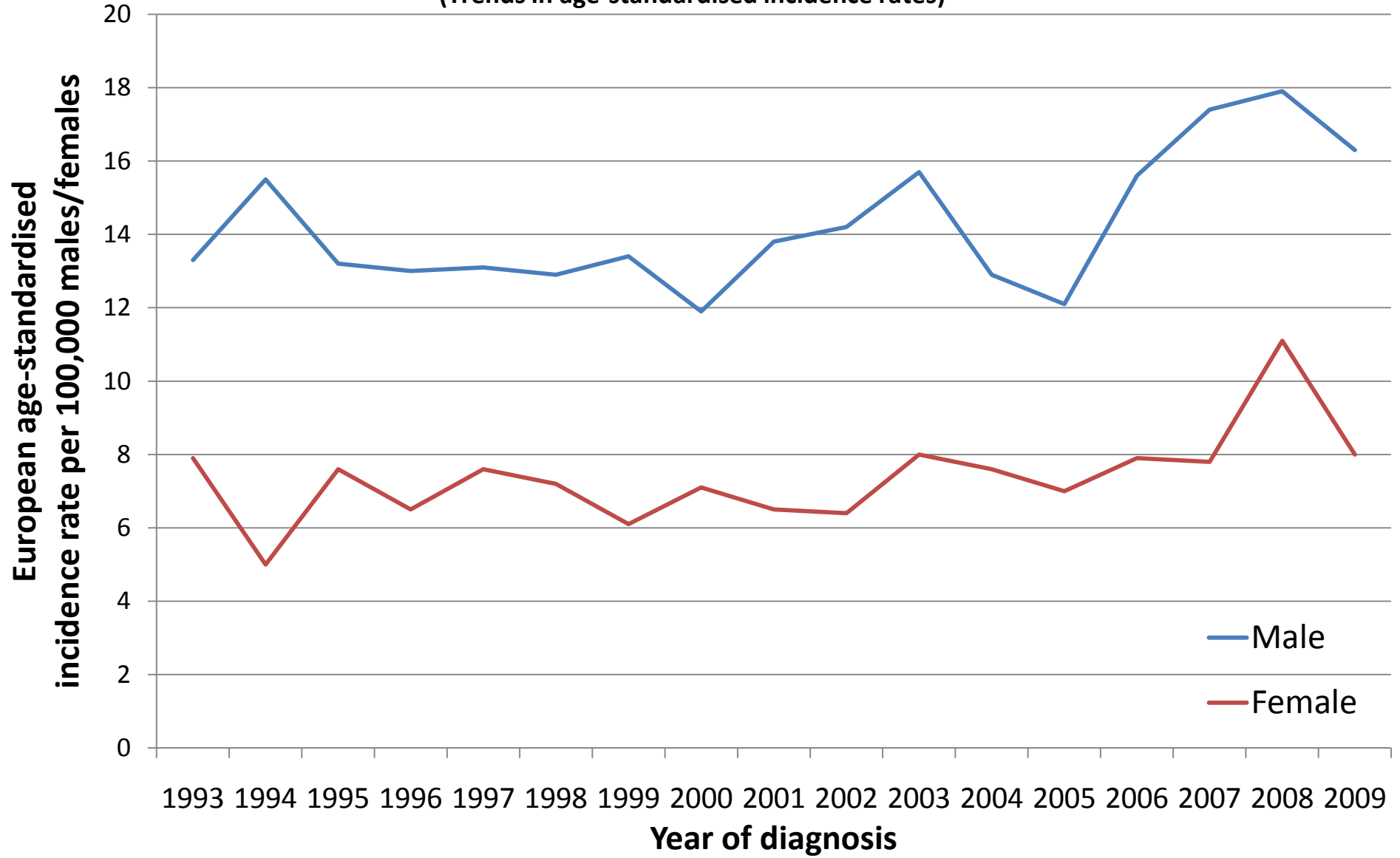
CI: Confidence interval

Kidney (C64-C66,C68) (Trends in number of cases per year)



Kidney (C64-C66,C68)

(Trends in age-standardised incidence rates)



NOTES

European Age Standardised Incidence Rate

The incidence rate per 100,000 persons that has been adjusted to take account of different age structures between geographic areas or time periods. This is done by adopting the European standard as a reference population. The EASIR can be considered to be the number of cases per 100,000 persons occurring in the population if the population possessed the same age structure as the European standard population.

World Age Standardised Incidence Rate

As for the European age-standardised rate but using the World standard population.

Confidence Interval

The range of values calculated to have a specified (usually 95%) probability of containing the true value of an observation. Thus the 95% confidence interval for a rate is the range of values within which there is a 95% probability of finding the true value for the rate.