

Number of cases and incidence rates by sex: 2005-2009

Bladder (C67)

Sex	Number of cases	Average number of cases per year	Percentage of all cancers ex. NMSC	Crude rate per 100,000	European age-standardised incidence rate per 100,000 (95% CI)	World age-standardised incidence rate per 100,000 (95% CI)	Odds of developing the disease before age 75 = 1 in:
Male	773	155	3.9	17.9	16.6 (15.4,17.8)	10.6 (9.8,11.4)	84.0
Female	304	61	1.6	6.8	4.8 (4.2,5.3)	3.1 (2.7,3.5)	303.5
All persons	1,077	215	2.7	12.3	9.9 (9.3,10.5)	6.4 (6.0,6.8)	135.9

NOTES:

NMSC: Non-melanoma skin cancer

CI: Confidence interval

Number of cases and incidence rates by sex and year of diagnosis
Bladder (C67)

Male

Year of diagnosis	Number of cases	Percentage of all cancers ex. NMSC	Crude rate per 100,000 males	European age standardised incidence rate per 100,000 males (95% CI)	World age standardised incidence rate per 100,000 males (95% CI)
1993	156	5.0	19.5	21.6 (18.1,25.0)	14.1 (11.8,16.4)
1994	139	4.5	17.3	19.1 (15.9,22.3)	12.4 (10.2,14.5)
1995	143	4.7	17.8	19.0 (15.8,22.1)	12.4 (10.3,14.5)
1996	177	5.6	21.8	23.1 (19.7,26.5)	14.9 (12.7,17.2)
1997	120	4.0	14.7	15.7 (12.9,18.6)	10.3 (8.4,12.2)
1998	162	5.2	19.8	20.9 (17.6,24.2)	13.5 (11.4,15.7)
1999	157	5.2	19.2	20.0 (16.8,23.2)	13.2 (11.1,15.4)
2000	145	4.6	17.7	18.3 (15.3,21.3)	12.1 (10.0,14.2)
2001	125	3.8	15.2	15.2 (12.5,17.9)	9.7 (7.9,11.5)
2002	130	3.9	15.7	15.8 (13.0,18.5)	10.2 (8.3,12.0)
2003	168	4.8	20.2	20.0 (16.9,23.1)	12.7 (10.7,14.7)
2004	152	4.3	18.2	17.2 (14.4,20.0)	10.9 (9.1,12.7)
2005	135	3.7	16.0	15.3 (12.7,17.9)	9.9 (8.1,11.6)
2006	159	4.2	18.6	17.6 (14.8,20.4)	11.1 (9.3,12.9)
2007	146	3.6	16.9	15.5 (13.0,18.1)	9.8 (8.2,11.5)
2008	156	3.7	17.9	16.4 (13.8,19.0)	10.4 (8.7,12.2)
2009	177	4.2	20.1	18.1 (15.4,20.8)	11.7 (9.9,13.5)

Female

Year of diagnosis	Number of cases	Percentage of all cancers ex. NMSC	Crude rate per 100,000 females	European age standardised incidence rate per 100,000 females (95% CI)	World age standardised incidence rate per 100,000 females (95% CI)
1993	51	1.6	6.1	4.7 (3.3,6.0)	3.0 (2.1,3.9)
1994	57	1.8	6.8	4.7 (3.4,6.0)	3.0 (2.1,3.8)
1995	66	2.1	7.8	6.4 (4.8,8.0)	4.2 (3.1,5.4)
1996	85	2.6	10.0	7.8 (6.0,9.6)	5.1 (3.9,6.3)
1997	43	1.3	5.0	3.9 (2.7,5.1)	2.6 (1.7,3.4)
1998	72	2.2	8.4	6.3 (4.8,7.8)	4.1 (3.0,5.1)
1999	58	1.7	6.7	5.0 (3.6,6.3)	3.2 (2.3,4.2)
2000	66	1.9	7.7	5.7 (4.3,7.2)	3.7 (2.7,4.6)
2001	57	1.7	6.6	5.0 (3.6,6.3)	3.3 (2.3,4.3)
2002	44	1.3	5.1	3.4 (2.4,4.5)	2.1 (1.4,2.8)
2003	59	1.6	6.8	5.0 (3.6,6.3)	3.2 (2.3,4.2)
2004	63	1.7	7.2	5.9 (4.3,7.4)	3.9 (2.9,5.0)
2005	57	1.6	6.5	4.4 (3.2,5.5)	2.8 (2.0,3.6)
2006	66	1.8	7.4	5.4 (4.0,6.7)	3.5 (2.5,4.4)
2007	47	1.2	5.2	3.9 (2.8,5.1)	2.6 (1.8,3.4)
2008	59	1.4	6.5	4.6 (3.3,5.8)	2.9 (2.1,3.8)
2009	75	1.8	8.2	5.6 (4.3,7.0)	3.6 (2.7,4.6)

All persons

Year of diagnosis	Number of cases	Percentage of all cancers ex. NMSC	Crude rate per 100,000 persons	European age standardised incidence rate per 100,000 persons (95% CI)	World age standardised incidence rate per 100,000 persons (95% CI)
1993	207	3.3	12.7	11.6 (10.0,13.3)	7.7 (6.6,8.9)
1994	196	3.2	11.9	10.8 (9.2,12.4)	7.0 (6.0,8.1)
1995	209	3.4	12.7	11.6 (9.9,13.2)	7.7 (6.6,8.8)
1996	262	4.1	15.8	14.2 (12.4,15.9)	9.3 (8.1,10.5)
1997	163	2.6	9.8	8.8 (7.4,10.2)	5.9 (4.9,6.9)
1998	234	3.6	13.9	12.5 (10.8,14.1)	8.2 (7.0,9.3)
1999	215	3.4	12.8	11.5 (10.0,13.1)	7.7 (6.6,8.8)
2000	211	3.2	12.5	11.1 (9.5,12.6)	7.3 (6.3,8.4)
2001	182	2.8	10.8	9.2 (7.8,10.6)	6.0 (5.1,7.0)
2002	174	2.6	10.3	8.7 (7.3,10.0)	5.6 (4.7,6.5)
2003	227	3.2	13.3	11.3 (9.8,12.8)	7.3 (6.3,8.4)
2004	215	3.0	12.6	10.5 (9.1,12.0)	6.9 (5.9,7.8)
2005	192	2.6	11.1	9.2 (7.9,10.5)	6.0 (5.0,6.9)
2006	225	3.0	12.9	10.5 (9.1,11.9)	6.7 (5.8,7.7)
2007	193	2.4	11.0	8.9 (7.7,10.2)	5.8 (4.9,6.7)
2008	215	2.6	12.1	9.7 (8.3,11.0)	6.2 (5.3,7.2)
2009	252	3.0	14.1	11.3 (9.9,12.7)	7.4 (6.4,8.3)

NOTES:

NMSC: Non-melanoma skin cancer

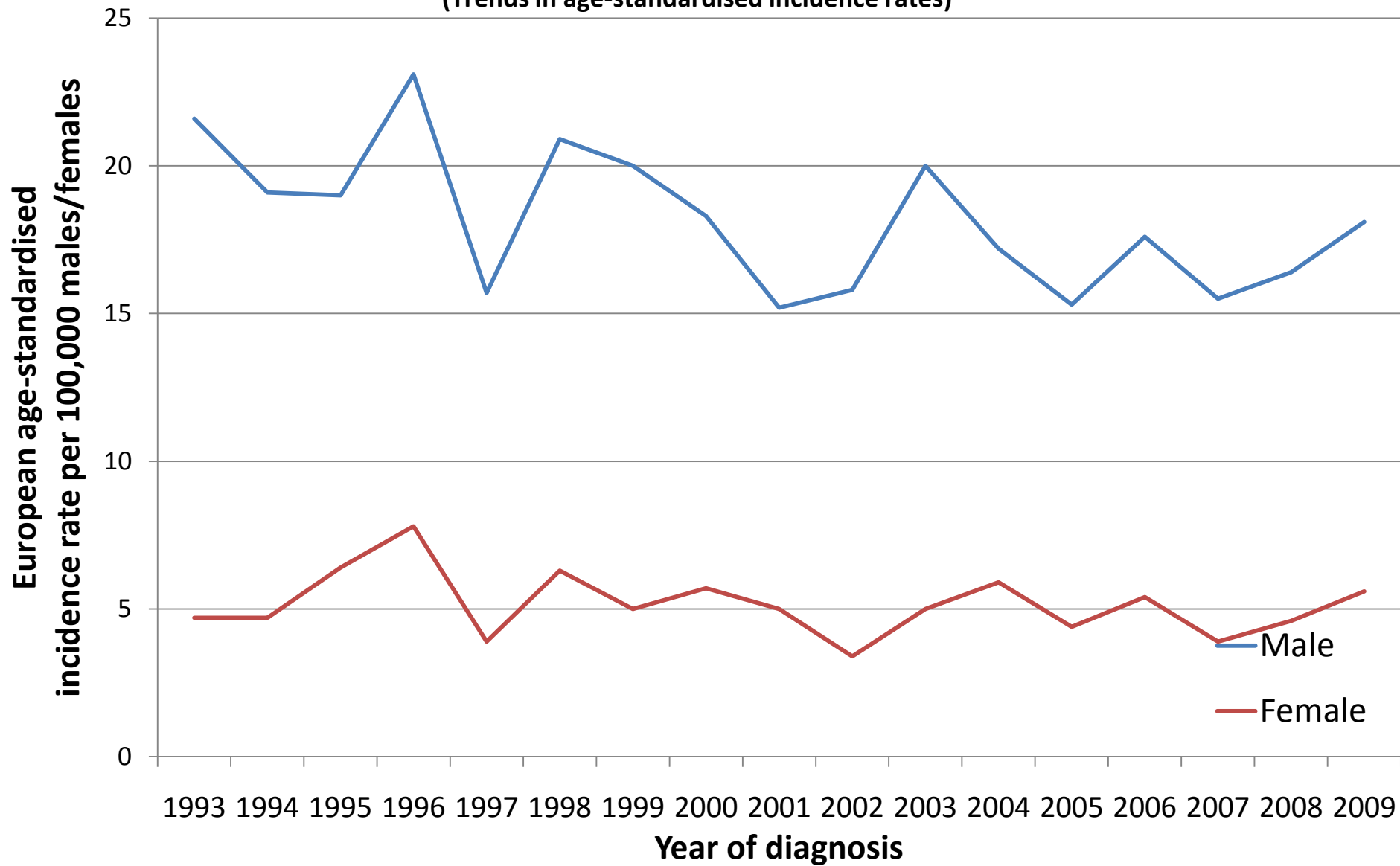
CI: Confidence interval

Bladder (C67)
(Trends in number of cases per year)



Bladder (C67)

(Trends in age-standardised incidence rates)



NOTES

European Age Standardised Incidence Rate

The incidence rate per 100,000 persons that has been adjusted to take account of different age structures between geographic areas or time periods. This is done by adopting the European standard as a reference population. The EASIR can be considered to be the number of cases per 100,000 persons occurring in the population if the population possessed the same age structure as the European standard population.

World Age Standardised Incidence Rate

As for the European age-standardised rate but using the World standard population.

Confidence Interval

The range of values calculated to have a specified (usually 95%) probability of containing the true value of an observation. Thus the 95% confidence interval for a rate is the range of values within which there is a 95% probability of finding the true value for the rate.