

Number of cases and incidence rates by sex: 2005-2009

Brain and other CNS (C70-C72)

Sex	Number of cases	Average number of cases per year	Percentage of all cancers ex. NMSC	Crude rate per 100,000	European age-standardised incidence rate per 100,000 (95% CI)	World age-standardised incidence rate per 100,000 (95% CI)	Odds of developing the disease before age 75 = 1 in:
Male	392	78	2.0	9.1	9.0 (8.1,9.9)	7.4 (6.6,8.2)	137.4
Female	257	51	1.3	5.7	5.3 (4.7,6.0)	4.5 (3.9,5.1)	230.1
All persons	649	130	1.6	7.4	7.1 (6.5,7.6)	5.9 (5.4,6.4)	173.3

NOTES:

NMSC: Non-melanoma skin cancer

CI: Confidence interval

**Number of cases and incidence rates by sex and year of diagnosis
Brain and other CNS (C70-C72)**

Male

Year of diagnosis	Number of cases	Percentage of all cancers ex. NMSC	Crude rate per 100,000 males	European age standardised incidence rate per 100,000 males (95% CI)	World age standardised incidence rate per 100,000 males (95% CI)
1993	61	2.0	7.6	8.3 (6.2,10.4)	7.2 (5.3,9.0)
1994	57	1.8	7.1	7.7 (5.7,9.7)	6.2 (4.5,7.8)
1995	55	1.8	6.8	7.6 (5.6,9.6)	6.3 (4.6,8.0)
1996	74	2.3	9.1	9.7 (7.5,12.0)	8.1 (6.2,10.0)
1997	61	2.0	7.5	8.0 (6.0,10.1)	6.3 (4.7,7.9)
1998	65	2.1	7.9	8.6 (6.5,10.6)	6.8 (5.1,8.5)
1999	58	1.9	7.1	7.5 (5.5,9.4)	6.1 (4.5,7.7)
2000	63	2.0	7.7	7.9 (5.9,9.9)	6.7 (5.0,8.4)
2001	72	2.2	8.7	8.9 (6.8,11.0)	6.8 (5.2,8.5)
2002	78	2.3	9.4	9.5 (7.4,11.6)	7.8 (6.0,9.7)
2003	70	2.0	8.4	8.5 (6.5,10.6)	7.1 (5.3,8.8)
2004	50	1.4	6.0	6.0 (4.3,7.7)	4.9 (3.5,6.3)
2005	77	2.1	9.1	8.9 (6.9,10.9)	7.2 (5.5,9.0)
2006	78	2.1	9.1	9.2 (7.1,11.2)	7.4 (5.7,9.1)
2007	81	2.0	9.4	9.3 (7.3,11.3)	7.9 (6.0,9.7)
2008	77	1.8	8.8	8.7 (6.7,10.6)	7.2 (5.5,8.9)
2009	79	1.9	9.0	9.0 (7.0,11.0)	7.4 (5.7,9.2)

Female

Year of diagnosis	Number of cases	Percentage of all cancers ex. NMSC	Crude rate per 100,000 females	European age standardised incidence rate per 100,000 females (95% CI)	World age standardised incidence rate per 100,000 females (95% CI)
1993	44	1.4	5.3	5.4 (3.8,7.1)	5.0 (3.4,6.5)
1994	62	2.0	7.4	7.5 (5.6,9.4)	6.6 (4.9,8.4)
1995	25	0.8	3.0	2.7 (1.6,3.8)	2.2 (1.2,3.2)
1996	48	1.5	5.6	5.5 (3.9,7.0)	5.0 (3.4,6.5)
1997	53	1.6	6.2	6.0 (4.4,7.7)	5.0 (3.6,6.4)
1998	66	2.0	7.7	7.3 (5.5,9.2)	6.0 (4.4,7.6)
1999	31	0.9	3.6	3.6 (2.3,4.8)	3.3 (2.0,4.5)
2000	50	1.5	5.8	5.3 (3.8,6.9)	4.1 (2.9,5.4)
2001	56	1.7	6.5	6.2 (4.5,7.9)	5.1 (3.7,6.6)
2002	52	1.5	6.0	5.6 (4.0,7.1)	4.8 (3.3,6.2)
2003	54	1.5	6.2	6.2 (4.5,7.8)	5.5 (3.9,7.1)
2004	49	1.3	5.6	5.4 (3.8,6.9)	4.8 (3.3,6.2)
2005	44	1.2	5.0	4.6 (3.2,6.0)	3.8 (2.6,5.0)
2006	58	1.6	6.5	6.2 (4.6,7.9)	5.2 (3.7,6.6)
2007	54	1.4	6.0	5.6 (4.1,7.1)	5.0 (3.5,6.5)
2008	49	1.2	5.4	4.7 (3.4,6.1)	3.7 (2.5,4.9)
2009	52	1.2	5.7	5.5 (4.0,7.1)	4.7 (3.3,6.1)

All persons

Year of diagnosis	Number of cases	Percentage of all cancers ex. NMSC	Crude rate per 100,000 persons	European age standardised incidence rate per 100,000 persons (95% CI)	World age standardised incidence rate per 100,000 persons (95% CI)
1993	105	1.7	6.4	6.8 (5.4,8.1)	6.0 (4.8,7.2)
1994	119	1.9	7.2	7.5 (6.1,8.9)	6.4 (5.2,7.6)
1995	80	1.3	4.9	5.1 (3.9,6.2)	4.2 (3.2,5.2)
1996	122	1.9	7.3	7.5 (6.1,8.8)	6.5 (5.3,7.7)
1997	114	1.8	6.8	6.9 (5.6,8.2)	5.6 (4.5,6.7)
1998	131	2.0	7.8	8.0 (6.6,9.4)	6.4 (5.3,7.6)
1999	89	1.4	5.3	5.4 (4.2,6.5)	4.6 (3.6,5.6)
2000	113	1.7	6.7	6.7 (5.4,7.9)	5.4 (4.4,6.5)
2001	128	1.9	7.6	7.4 (6.1,8.7)	5.9 (4.8,7.0)
2002	130	1.9	7.7	7.4 (6.1,8.7)	6.2 (5.1,7.4)
2003	124	1.8	7.3	7.2 (5.9,8.4)	6.2 (5.0,7.4)
2004	99	1.4	5.8	5.7 (4.6,6.8)	4.8 (3.8,5.8)
2005	121	1.7	7.0	6.6 (5.4,7.8)	5.5 (4.4,6.5)
2006	136	1.8	7.8	7.6 (6.3,8.9)	6.2 (5.1,7.4)
2007	135	1.7	7.7	7.4 (6.1,8.6)	6.4 (5.2,7.6)
2008	126	1.5	7.1	6.6 (5.5,7.8)	5.4 (4.4,6.5)
2009	131	1.5	7.3	7.2 (5.9,8.4)	6.0 (4.9,7.1)

NOTES:

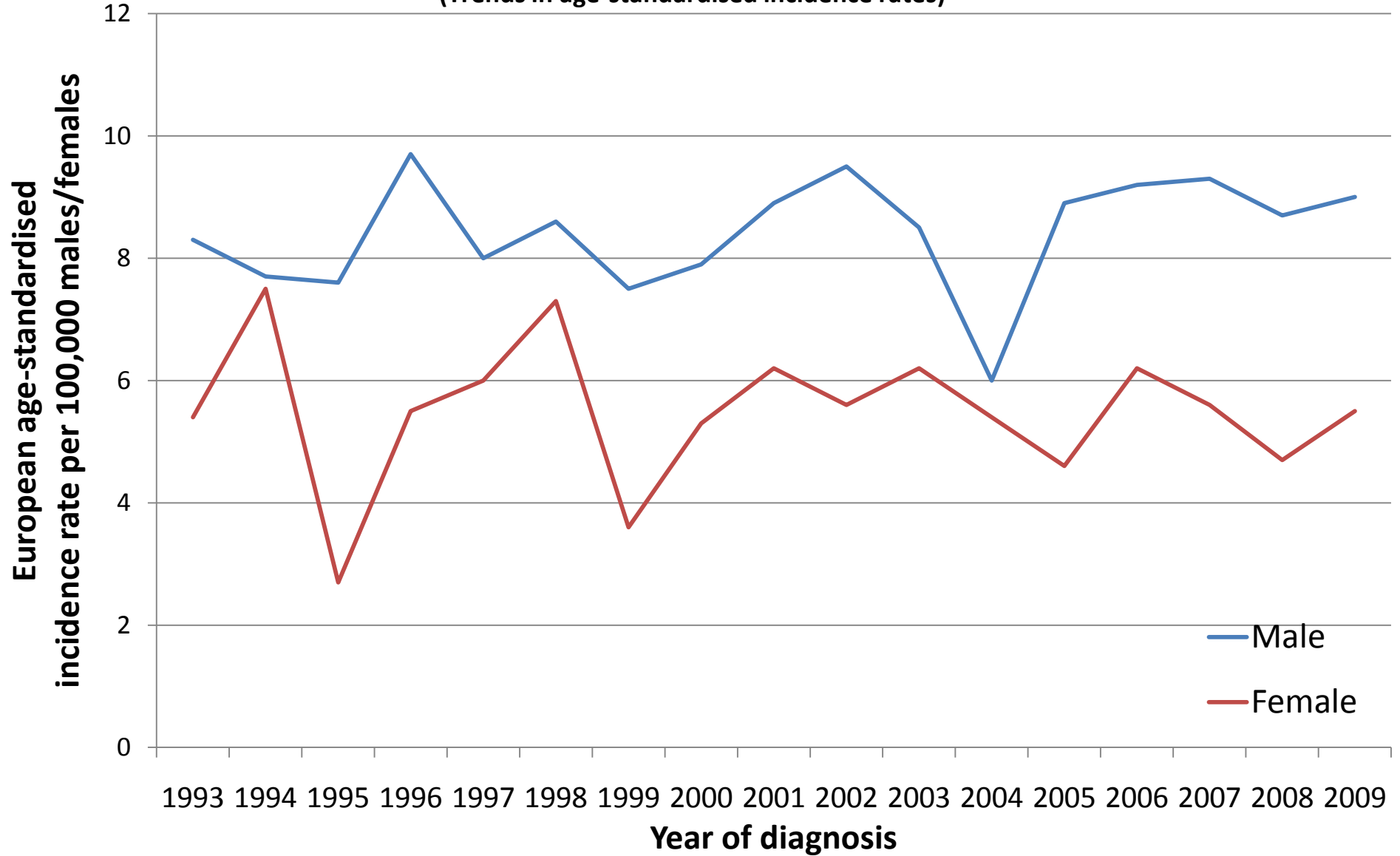
NMSC: Non-melanoma skin cancer

CI: Confidence interval

Brain and other CNS (C70-C72) (Trends in number of cases per year)



Brain and other CNS (C70-C72)
(Trends in age-standardised incidence rates)



NOTES

European Age Standardised Incidence Rate

The incidence rate per 100,000 persons that has been adjusted to take account of different age structures between geographic areas or time periods. This is done by adopting the European standard as a reference population. The EASIR can be considered to be the number of cases per 100,000 persons occurring in the population if the population possessed the same age structure as the European standard population.

World Age Standardised Incidence Rate

As for the European age-standardised rate but using the World standard population.

Confidence Interval

The range of values calculated to have a specified (usually 95%) probability of containing the true value of an observation. Thus the 95% confidence interval for a rate is the range of values within which there is a 95% probability of finding the true value for the rate.